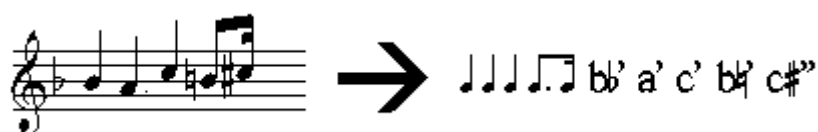
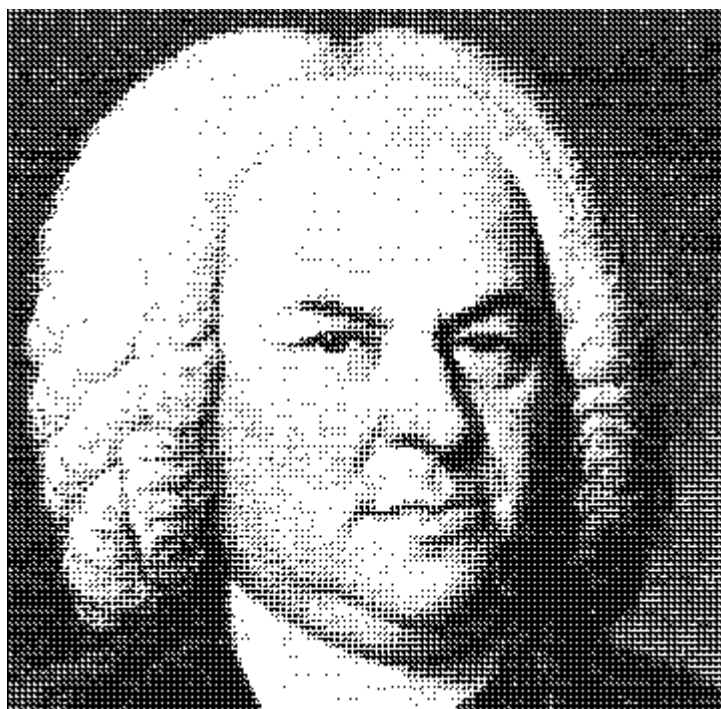


# Bach



Roman Family Musicological Font  
for *Microsoft Windows 3.0* or higher

## USER GUIDE

Version 2.3a

© Yo Tomita 1992-1994

### ----- Contents -----

**Introduction** .....

2

<b>Summary of features</b> .....	2
<b>System Requirements</b> .....	3
<b>Package Contents</b> .....	3
<b>Installation</b> .....	4
<b>Font Definition</b> .....	6
<b>Software License</b> .....	7
<b>Limited Warranty</b> .....	8
<b>Order Form</b> .....	9

## **Introduction**

**Bach** is a font software for both screen display and printer for Windows. **Bach** contains a comprehensive set of musical symbols but retains normal English character set in standard Roman type-face.

It is important to note that **Bach** is not the kind of fonts for music score editors, such as Adobe's **Sonata**. Unlike such fonts, the music characters in **Bach** are sized and spaced out that you can use in a sentence.

In **Bach**, line spacing will not be affected by its use and beamed symbols are available from quaver to hemidemisemiquaver. But if you try to use **Sonata** or any other fonts for music processor in a wordprocessor, line spacing is severely affected and there is no beamed symbols you can use. You need to add beams later by hand as well.

Although it is possible to write small musical examples with **Bach**, it is not possible to get the same quality of examples in fully notated form as the ones you can create in a score editor.

The musical symbols in **Bach** follow the standard convention found in many academic books and journals. Instead of using a music example, many musical symbols are embedded in certain fashion in sentences, for it is often easier and sufficient to quote them in a sentence an extract of a specific element of music, such as pitch (a# b' c\$"), chords or rhythm (¶.î ì) that are focused in the discussion. In this way, the sentence is constructed in a continuing flow of utterable phrase, without requiring large break to accommodate a large, complex musical example.

**Bach** was originally designed specifically for use in the spreadsheet to compile a database for the manuscript study. This specific environment demanded such that the font must contain both normal English character set as well as comprehensive set of musical symbols. This is why most of the music symbols in **Bach** are allocated to the locations above 7-bit ASCII range which cannot be typed easily. Accidentals are allocated in the keyboard accessible range, for they are always accompanied by alphabetical characters.

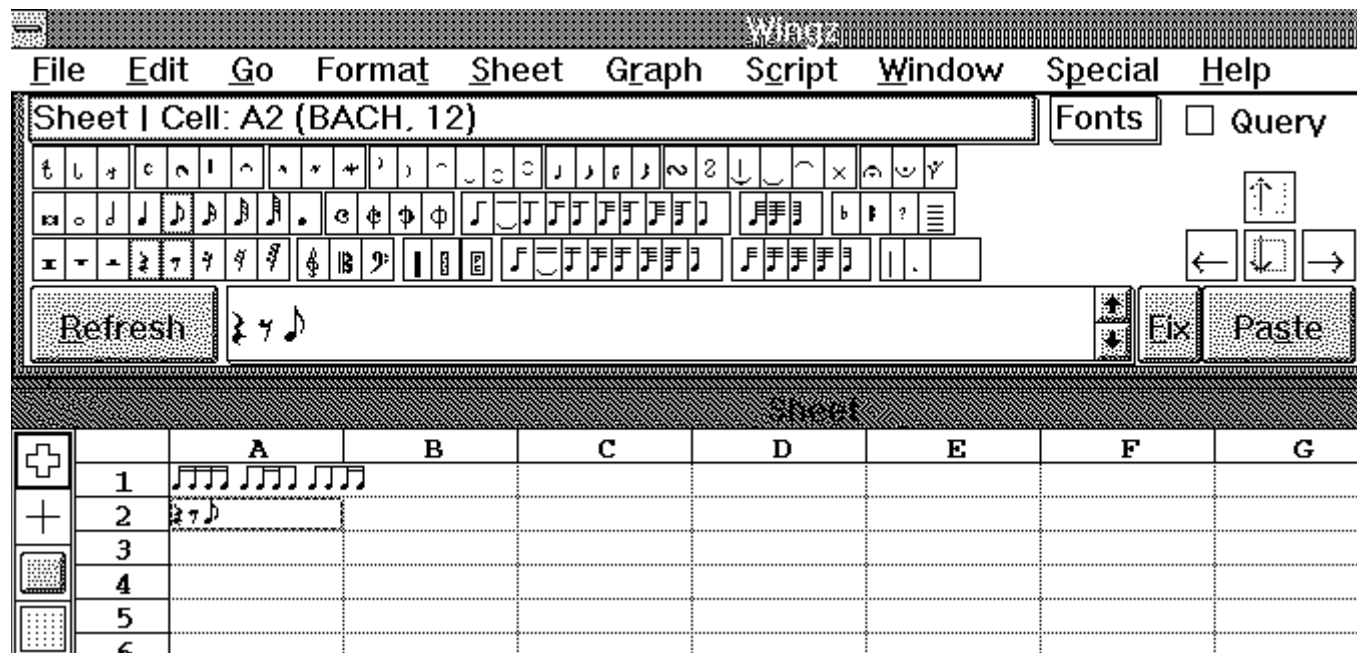
This very nature of font arrangement can be helpful under the circumstances when you accidentally lose the format of the paragraph. For example, if you lose format information of the above paragraphs, you might be in great trouble if the music font uses normal 7-bit ASCII range.

## **Summary of Features**

- \* Almost WYSIWYG effect with Shareware version, but True WYSIWYG with Registered version if you have TrueType or ATM.
- \* Unlike other commercial music fonts, **Bach** is a Roman family font and is fully compatible with normal applications, such as wordprocessor, spreadsheet and database.
- \* With **Bach** you can write musicological sentences with this font alone. If you use a spreadsheet or a database (under which you are normally permitted to use one font only for a field / record), this font is probably the only option for you. This also means **Bach** could be the only required font downloaded to your printer, conserving printer's memory.
- \* Endless variety of notational patterns (up to hemidemisemiquavers) and ornaments (e.g., *doppelt cadence und mordant*) can be created by combining the characters in the font.
- \* High definition Portrait font for HP Laserjet is included. For registered version, you will receive two scalable fonts, TrueType and ATM. In addition, many other high-resolution printer fonts are included: HP Laserjet in Landscape mode and HP Deskjet fonts.

**Bach** is an ANSI font. Since 74 musical symbols are located in the extended range of ASCII table (above 128), you need to hold ALT key and typing 4 digits of ANSI code of each character on Numeric Keypad (with Num Lock indicator on). There are other (and perhaps better) ways to do if you can:

1. run **Character Map** which is normally found in Accessories group in Program Manager, and copy the desired symbol.
2. copy and paste from any document containing such characters (e.g., open the BACH\_ASC.WRI);
3. create Music Symbol Editor of your own. I have created it for Wingz (see below) and Lotus AmiPro 3.0 for registered users.



Some musical symbols (i.e., notes, rests and selected parts of ornaments) have the provision of overlapping with other symbols in order to create specific shapes. Please refer to BACH\_SYM.WRI.

## System Requirements

- \* A Computer capable of running Windows
- \* At least one application program which can make use of Windows' selection of fonts, such as Windows Write, Word for Windows, AmiPro, Lotus 123 for Windows, Excel, Wingz.
- \* Any printer that is supported by Windows.

## Package Contents

This **shareware** package contains the following files:

BACH23E.FON	Windows Raster font (VGA res).
BACHHP08.SFP	HP Laserjet II (III) portrait font (8 pt)
BACHHP08.PFM	Windows font metric table of above
BACHHP10.SFP	HP Laserjet II (III) portrait font (10 pt)
BACHHP10.PFM	Windows font metric table of above
BACHHP12.SFP	HP Laserjet II (III) portrait font (12 pt)
BACHHP12.PFM	Windows font metric table of above

BACHHP14.SFP	HP Laserjet II (III) portrait font (14 pt)
BACHHP14.PFM	Windows font metric table of above
BACH23S.TTF	TrueType font (embedding capability disabled)
BACH23N.PFA	Postscript printer font (Postscript Type 3 font)
BACH23N.PFM	Windows font metric table of above
BACHANSI.WRI	Table of <b>Bach</b> font in ANSI code
BACHSMPL.WRI	Sample Symbols (Windows Write)
BACH_SYM.WRI	Bach's Symbols: Classified index.
BACH_UG.WRI	On-line description (Windows Write): Users Guide.
README <i>nn</i> .txt	Latest information of Bach, etc.

The **registered** package contains a printed manual and the following files on the disk:

BACH.ICO	Bach Icon (for one of on-line documents)
BACH22E.FON	Windows Raster font (VGA res.)
BACHSCR.FON	a dummy Windows Raster font (VGA res.)
BACHSMPL.WRI	Sample Symbols (Windows Write)
BACH_SYM.WRI	On-line description of the font (Windows Write)
README $nn$ .txt	Latest information of Bach, etc.
BACHHP $nn$ .SFL	HP Laserjet II (III) landscape font ( $nn = 08, 10, 12, 14, 18$ pt)
BACHHP $nn$ .PFM	Windows font metric table of above
BACHHP $nn$ .SFP	HP Laserjet II (III) portrait font ( $nn = 08, 10, 12, 14, 18$ pt)
BACHHP $nn$ .PFM	Windows font metric table of above
BACHHP $nn$ .USP	HP Deskjet font ( $nn = 08, 10, 12, 14, 18$ pt)
BACHHP $nn$ .PFM	Windows font metric table of above
BACH23N.TTF	TrueType font (full version)
BACH23N.FOT	
BACH23N.PFB	Postscript Type 1 (ATM) font
BACH23N.PFM	font metrics of above
BACH23N.AFM	
BACH23N.INF	

Plus many utility for Informix Wingz and for Lotus AmiPro 3.0

### **Installation of Shareware package**

**CAUTION: Please make a backup copy of the original disk prior to installation.**

#### **To install a Windows screen font in Windows 3.x and TrueType in Windows 3.1:**

1. Run Windows.
2. Open CONTROL PANEL (usually found in MAIN group of Program Manager) and double click on FONTS.
3. Press "ADD" button and click on one of the floppy drives that the **Bach** disk is located.
4. Select BACHE.FON (for a VGA display) or BACH23S.TTF (TrueType font)
5. Click on "EXIT". **Bach** screen font is now installed.

#### **To install a PostScript printer font in Windows:**

1. Copy BACH23N.PFA font in \PSFONTS directory. (If you do not have a PSFONTS directory, you should create one now)
2. COPY BACH23N.PFM font in \PSFONTS\PFM directory. (If you do not have a \PSFONTS\PFM directory, you should create one now)
3. Edit WIN.INI with any text editor (e.g., NOTEPAD.EXE or SYSEDIT.EXE of Windows): Go to the section header "[POSTSCRIPT, {printerport}]". Find a line "SOFTFONTS={n}".

If "SOFTFONTS={n}" is already defined, go to 4, otherwise go to 7.

4. Increment the "n" by one.
5. Go to the end of the softfont listing "SOFTFONT $n$ =....." and add the following line:  
SOFTFONT{ $n+1$ }={drive}:\PSFONTS\PFM\BACHPS.PFM,{drive}:\PSFONTS\BACHPS.PFA
6. Save your changes to the WIN.INI file. The installation is now complete

If "SOFTFONTS="n" has not been defined:

7. Create the following line directly under the section header:  
SOFTFONTS=1
8. Type the following line directly below:  
SOFTFONT1={drive}:\PSFONTS\PFM\BACHPS.PFM,{drive}:\PSFONTS\BACHPS.PFA
9. Save your changes to the WIN.INI file. The installation is now complete.

### To install a HP Laserjet font in Windows 3.0:

1. Copy BACHHP\*. \* fonts in \PCLFONTS directory. (If you do not have a PCLFONTS directory, you should create one now)
2. Edit WIN.INI with any text editor (e.g., NOTEPAD.EXE or SYSEDIT.EXE of Windows): Go to the section header "[HPPCL, {printerport}]". Find a line:  
SOFTFONTS={n}

If "SOFTFONTS={n}" is already defined, go to 3, otherwise go to 7.

3. Increment the "n" by 4.
4. Go to the end of the softfont listing "SOFTFONTn=....." and add the following lines:  
SOFTFONT{n+1}={drive}:\PCLFONTS\BACHHP08.PFM,{drive}:\PCLFONTS\BACHHP08.SFP  
SOFTFONT{n+2}={drive}:\PCLFONTS\BACHHP10.PFM,{drive}:\PCLFONTS\BACHHP10.SFP  
SOFTFONT{n+3}={drive}:\PCLFONTS\BACHHP12.PFM,{drive}:\PCLFONTS\BACHHP12.SFP  
SOFTFONT{n+4}={drive}:\PCLFONTS\BACHHP14.PFM,{drive}:\PCLFONTS\BACHHP14.SFP
5. Save your changes to the WIN.INI file.
6. Delete a file called "FS{printer port}.PCL" found in "{drive}\{windows' default directory}". The installation is now complete.

If "SOFTFONTS={n}" has not been defined:

7. Create the following line directly under the section header:  
SOFTFONTS=4
8. Type the following lines directly below:  
SOFTFONT1={drive}:\PCLFONTS\BACHHP08.PFM,{drive}:\PCLFONTS\BACHHP08.SFP  
SOFTFONT2={drive}:\PCLFONTS\BACHHP10.PFM,{drive}:\PCLFONTS\BACHHP10.SFP  
SOFTFONT3={drive}:\PCLFONTS\BACHHP12.PFM,{drive}:\PCLFONTS\BACHHP12.SFP  
SOFTFONT4={drive}:\PCLFONTS\BACHHP14.PFM,{drive}:\PCLFONTS\BACHHP14.SFP
9. Save your changes to the WIN.INI file.
10. Delete a file called "FS{printer port}.PCL" found in "{drive}\{windows' default directory}". The installation is now complete.

### To install a HP Laserjet font in Windows 3.1:

1. Run Windows.
2. Open **Control Panel** and Click on **Printer**.
3. Select **SETUP**, then **ADD FONTS**.
4. Select disk drive and directory where the font is located.
5. Follow the procedure of Windows' manual / help information for installing fonts.

## **Font Definition**

### **Preserved Symbols in Bach**

!+/?()[ ]{}:;.,'"0123456789  
A B C D E F G H I J K L M N O P Q R S T U V W X Y Z  
a b c d e f g h i j k l m n o p q r s t u v w x y z

### **Unique Symbols in Bach**

Musical symbols are located in the area where all the characters for numbers and standard alphabetical characters (except “X”) are not located.

Some symbols have narrower kerning width than their character width. This is to allow overlapping two or more characters to create specific symbols. Bach uses this concept to increase the variety of musical symbols.

Narrowing kerning width are applied for the following reasons:

- \* Most beamed notes and rests have the provisions of a dotted pattern. Thus where the dot is not required, a space must be provided;
- \* Most ornaments are made up by the combination of various components, some by overlapping on to another;
- \* Numeric time-signatures consist of two numerals;
- \* The schenkerian caret overlaps on the following character.

Please read the following on-line documents:

BACH\_SYM.WRI - Classified index of music symbols in Bach.  
BACHSMPL.WRI - Sample of musical notation created by Bach.  
BACHANSI.WRI - Bach symbols arranged according to ANSI code



## **SOFTWARE LICENSE**

### **This section is applicable to both Shareware Version and Registered Version.**

Bach is not and has never been public domain software, nor is it free software. No one may modify the software in any way. The use of Bach, except for the initial 21-day trial, requires registration. The use of unlicensed copies of Bach by any person, business, corporation, government agency or any other entity is strictly prohibited.

### **This section is applicable to Shareware Version.**

Any use of Bach Shareware Version is the implication of a user's acceptance of the terms and conditions listed in the Licence. Non-registered users are granted a limited license to use Bach Shareware Version on a 21-day trial basis for the purpose of determining whether Bach is suitable for their needs.

A limited license is granted to copy and distribute Bach only for the trial use of others, subject to the above limitations, and also the following:

- \* Bach must be copied in unmodified form, complete with the file containing this license information and the file containing registration information.
- \* The full machine-readable Bach documentation must be included with each copy.
- \* Bach may not be distributed in conjunction with any other product without a specific license to do so from the author.
- \* No fee, charge, or other compensation may be requested or accepted, except as authorised below:

Operators of electronic bulletin board systems may make Bach available for downloading only as long as the above conditions are met. An overall or time-dependent charge for the use of the bulletin board system is permitted as long as there is not a specific charge for the download of Bach.

ASP vendors can distribute Bach without obtaining any permission from the Author. But I prefer you write to me first, so that I can send you the latest version. Other vendors may distribute Bach only after obtaining written permission from the Author. Such permission is usually granted. Please write for details. Vendors may charge a disk duplication and handling fee, which, when pro-rated to the Bach product, may not exceed four pounds.

### **This section is applicable to Registered Version.**

User's request for registration for Bach Registered Version is the implication of a user's acceptance of the terms and conditions listed in the Licence. A single user license permits a user to use Bach only on a single computer. Licensed users may use the program on different computers, but may not use the program on more than one computer at the same time. Multiple user license requires special permission.

User's registration for Bach Registered Version is a purchase for the right to use Bach only under the term and conditions listed in this Licence. At no circumstance, licensed users would be allowed to copy or resell their licenses or Bach product to the third party.

When upgrade to a newer version of Bach, user's licence for the previous version are automatically suspended. At no circumstance, licensed users would be allowed to transfer or resell their licenses or Bach to the third party.

### **LIMITED WARRANTY**

#### **This section is applicable for Registered Version only.**

The author warrants that all disks provided are free from defects in material and workmanship, assuming normal use, for a period of 21 days from the date of purchase.

The author warrants that the program will perform in substantial compliance with the documentation supplied within this document. If a significant defect in the product is found, the Purchaser may return the product for a refund. In no event will such a refund exceed the purchase price of the product.

#### **This section is applicable for both Shareware Version and Registered Version.**

Use of this product for any period of time constitutes your acceptance of this agreement and subjects you to its contents.

EXCEPT AS PROVIDED ABOVE, THE AUTHOR OF BACH DISCLAIMS ALL WARRANTIES, EITHER EXPRESS OR IMPLIED, INCLUDING, BUT NOT LIMITED TO IMPLIED WARRANTIES OF MERCHANTABILITY AND FITNESS FOR A PARTICULAR PURPOSE, WITH RESPECT TO THE PRODUCT. SHOULD THE PROGRAM PROVE DEFECTIVE, THE PURCHASER ASSUMES THE RISK OF PAYING THE ENTIRE COST OF ALL NECESSARY SERVICING, REPAIR, OR CORRECTION AND ANY INCIDENTAL OR CONSEQUENTIAL DAMAGES. IN NO EVENT WILL THE AUTHOR OF BACH BE LIABLE FOR ANY DAMAGES WHATSOEVER (INCLUDING WITHOUT LIMITATION DAMAGES FOR LOSS OF BUSINESS PROFITS, BUSINESS INTERRUPTION, LOSS OF BUSINESS INFORMATION AND THE LIKE) ARISING OUT OF THE USE OR THE INABILITY TO USE THIS PRODUCT EVEN IF THE AUTHOR HAS BEEN ADVISED OF THE POSSIBILITY OF SUCH DAMAGES.

## **Order form**

Name: \_\_\_\_\_

Company: \_\_\_\_\_

Address: \_\_\_\_\_

\_\_\_\_\_

Post code: \_\_\_\_\_ Country: \_\_\_\_\_

Telephone: \_\_\_\_\_ Fax: \_\_\_\_\_ Email: \_\_\_\_\_

Number of copies: \_\_\_\_\_

<b>Bach V2.3a</b> (font for Windows) for Individual User	@ £10.00	_____.
or	@ US\$20.00	_____.

For Site License, please contact the author, specifying a number of users.

### Post and Packing

within UK	@ £ 1.50	_____.
within EEC	@ £ 2.50	_____.
from USA	@ \$ 5.00	_____.
other countries (by air)	@ £ 4.00	_____.

Total: \_\_\_\_\_.

Disk Size (circle one)	5.25" (360k)	5.25" (1.2M)
	3.5" (720k)	3.5" (1.44M)

How did you know about Bach? \_\_\_\_\_

-----

Please send payment with a check payable to Y. Tomita, or any suggestions, comments to:

Dr. Y. Tomita  
9 Raynel Green  
Cookridge  
Leeds LS16 6BT  
ENGLAND