


Introduction

This document describes each of the AddOns that are shipped with PowerLock Release 3.

To use AddOn files, simply place them in the same folder as your PowerLock application. They will be active the next time PowerLock is used.

To disable all AddOns, hold down the Shift key when you launch PowerLock.

AddOns have the ability to alter PowerLock in such a way that it can look completely different. Usually, you will notice a new button, or a changed button. Many AddOns will put special commands into special options menus. The  symbol represents an options menu.

PowerLock Release 3 includes the following AddOns:

AutoLogOn
BookTools
Hide
LastResort *
LogManager *
MasterPassword *
NeverEverShutDown
OutToLunch
PowerMessages
PowerUsers
SaferShutDown
SuperHelper

* can only be used by registered PowerLock users

AutoLogOn

This is a powerful AddOn which makes use of System 7's advanced aliasing features to your benefit. It does not operate under System 6. To use AutoLogon, select from the Options menu on the Change dialog "Save AutoLogOn Settings". The next time you start PowerLock and enter a valid username and password (or just a password if single user), AutoLogOn will do the following:

- * automatically establish all your network connections that existed when you saved the settings, prompting for passwords wherever necessary;
- * mount any hard disks or other offline volumes that were online at the time the settings were saved;
- * prompt you to insert any floppy disks that were online.

Each user of PowerLock has their own unique settings. AutoLogOn does not store network passwords so there is no security risk.

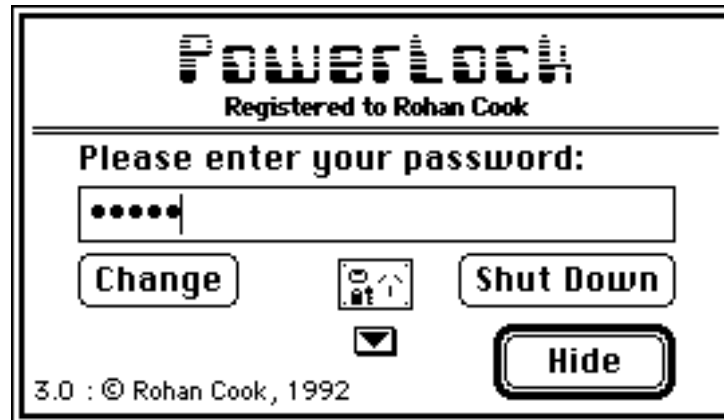
Each time you select "Save AutoLogOn Settings", your old settings are replaced. The SuperUser can also clear all AutoLogOn information from the Preferences dialog.

BookTools

A simple AddOn designed solely for PowerBook or Macintosh Portable users. Currently it supports two options:

- * it puts your portable to sleep after the TimeOut period has expired;
- * it provides a Sleep option from the main PowerLock dialog.

Hide



Hide is a simple AddOn that makes PowerLock remain active, ready & waiting for you to reactivate it. It requires either System 7 or MultiFinder under System 6. It is useful when you want to leave your Macintosh for a while.

When the Hide AddOn is active, the Okay button changes to **Hide**. When you enter the correct password and click **Hide**, PowerLock closes its windows and returns you to the Finder. There are several ways in which you can then reactivate PowerLock:

- * select it from the Apple menu (System 6)
- * select it from the Applications menu (System 7)
- * use the PowerLock FKEY (System 7 Only)
- * double-click the PowerLock icon in the Finder

When reactivated, you will again be asked for a password.

To completely Quit PowerLock, you need to select 'Quit PowerLock' from the Options popup menu.

Important:

The actual name of the Hide AddOn is **~Hide**. Please do not change its name.
(Technical note: the main reason it is named this way is to ensure it is loaded last - all AddOns after Hide will not receive the aReqPWOK message)

System 6 Users: The PowerLock FKEY should not be used to reactivate the hidden PowerLock.

Last Resort

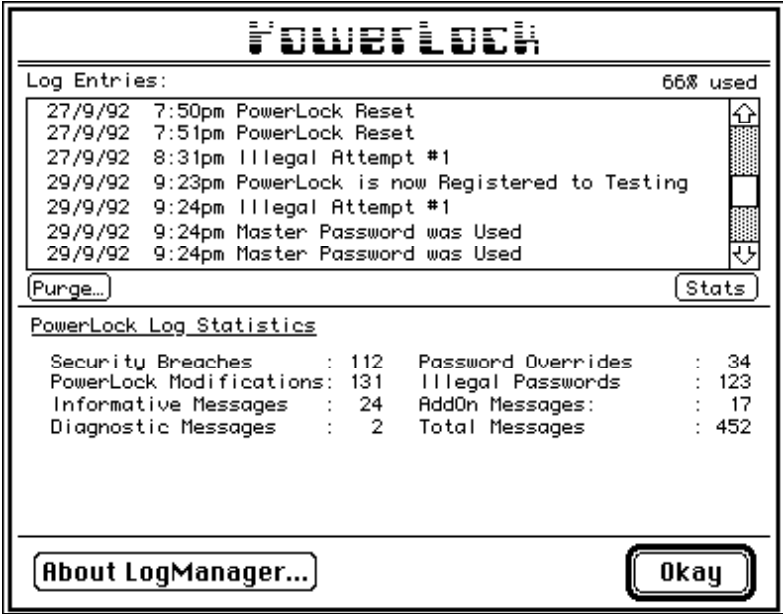
Note: This will only operate with Registered copies of PowerLock.

This was also supplied with Release 2. Last Resort may come in handy if you forget your password. You will need to somehow place it into your PowerLock folder. Once there, PowerLock will prompt you for your registration information and then quit without requiring a password.

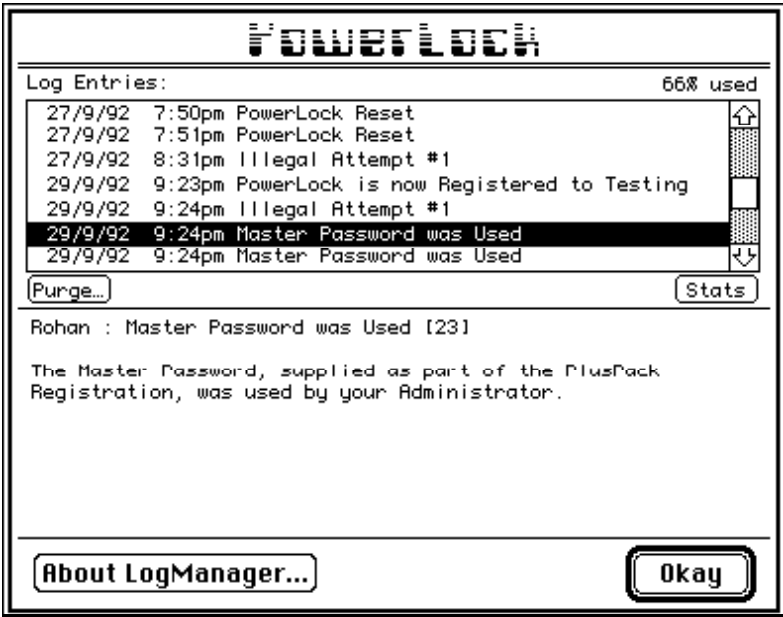
Be careful with this AddOn as it defeats the purpose of PowerLock!

LogManager

As the name implies, LogManager provides facilities for viewing and clearing the PowerLock log file. It also gives additional explanations for each of the messages in the log file. When the LogManager AddOn is in the same folder as PowerLock, you can double-click on the Log File to activate the LogManager. You can also click the LogManager button in the Preferences dialog. This is what the initial display looks like:



You can then click on any listed message to get a detailed explanation as in the following:



When the % used starts to get near 100% you should purge the log file. The **Purge...** button allows you to clear out the entire log file - you'll be asked to confirm your choice. The Stats button simply redisplay the statistics that were shown when the LogManager opened.

If your log file is quite large, it may take a while to analyse it. If it is above 5% capacity a progress meter will be displayed, giving you an estimate of how long it will take to complete.

The LogManager requires a Registered copy of PowerLock to operate. However, it provides a demonstration mode for unregistered users - only the first ten log entries are displayed. LogManager is limited to a log file size of 500 lines.

MasterPassword

MasterPassword is only available to registered PowerLock PlusPack users. It enables a corporate administrator to set a common master override password for all PowerLock copies used in the organisation. You select MasterPassword from the Options menu on the Preferences dialog. The following dialog box appears:

Please enter your preferred Master Password:

Registration Key:

Master Password:

Enter the registration key you have used on this particular copy of PowerLock and enter a preferred Master Password. You will be asked to confirm this password.

To remove the Master Password, you must still enter your Registration Key but select **Clear...** instead of **Okay**

To use the Master Password, enter it into the password section of the main dialog box. Leave the username section blank. Note that the MasterPassword AddOn is NOT required to support the use of the Master Password. It is only required if you want to change the Master Password.

NeverEverShutDown

This simple AddOn does exactly what the name suggests - it prevents PowerLock from shutting down. One of the main security features of PowerLock is its ability to shut down your Macintosh if someone tries to gain access. Hence, it is not recommended that you use NeverEverShutDown unless for a specific purpose as it will reduce the effectiveness of PowerLock's security.

The effect of NeverEverShutDown is the following:

- * it puts no limit on the number of incorrect password attempts,
- * it disables the Seconds before Shut Down option,
- * it removes the Shut Down button from the main dialog,
- * it intercepts any other AddOns' attempt to Shut Down.

To use it you first need to change your Preferences. If you see a message referring you to the NeverEverShutDown instructions, it is because you haven't changed the Preferences as per these instructions.

Open PowerLock without NeverEverShutDown being in the PowerLock folder and go to your preferences. Disable the Seconds before Shut Down option and then activate Unlimited Password Attempts.

Now place NeverEverShutDown in the PowerLock folder and open PowerLock. You'll notice that the Shut Down button has disappeared, and you'll also notice that the Preferences dialog has a few items missing. To disable NeverEverShutDown, simply remove it from the PowerLock folder and reset your Preferences.

OutToLunch

OutToLunch is a simple screen saver. It merely puts up a user-defined message in a black box and moves it about the screen, slowly erasing everything on the screen. The message defaults to 'Out to Lunch' but can be easily specified and is saved between sessions. The delay before the message appears is taken directly from the Preferences/TimeOut Screen option.

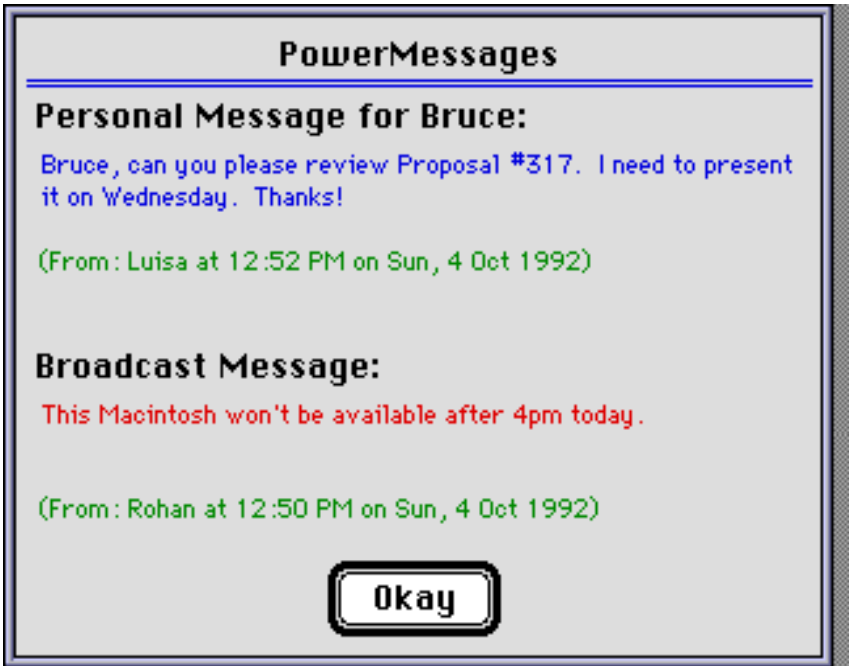
To use OutToLunch, simply place it in PowerLock's folder and ensure that you have enabled the TimeOut screen option in the Preferences dialog.

You can change the TimeOut message from the main PowerLock dialog's options menu. Note that if you have PowerLock's Shut Down option enabled, Out to Lunch will not prevent the shut down from occurring after the specified time.

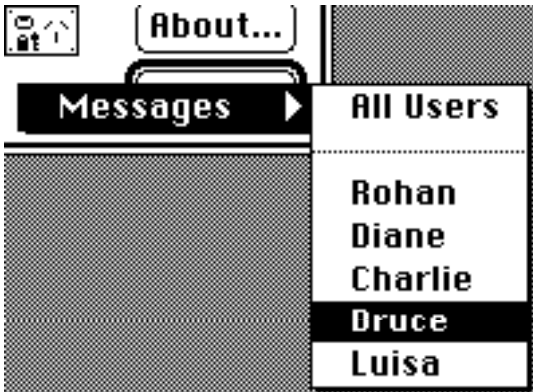
PowerMessages

A simple method of leaving a message for other users of your Macintosh. It also provides a means for the Macintosh administrator to leave a broadcast message to all users.

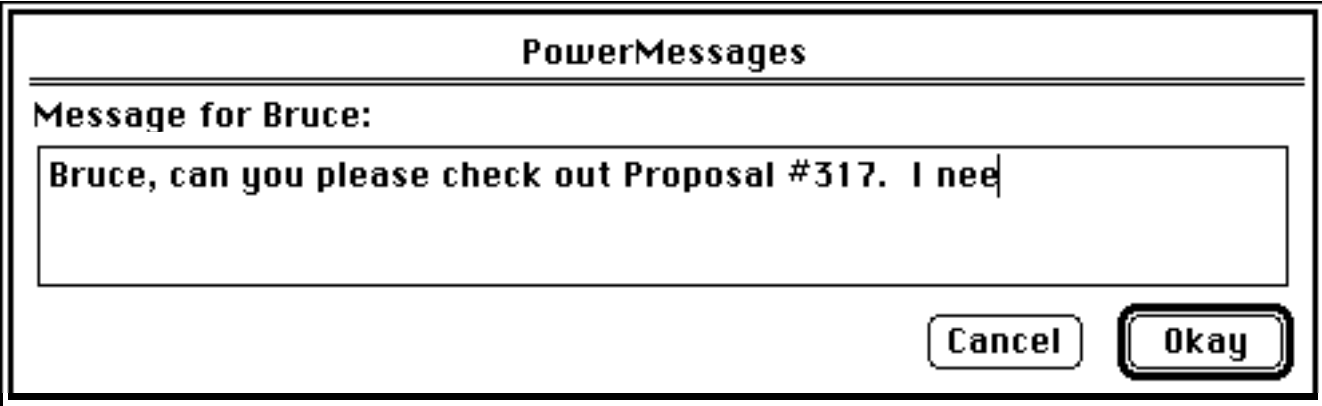
Messages are displayed at startup, once you enter a correct username and password. If there is no personal message for you, and there is no broadcast message, you won't see a message display. If a broadcast message waiting, the main PowerLock dialog will display "Message Waiting...". The following is an example of both a personal and broadcast message waiting:



To leave a message for someone, go to the **Change** dialog and select the person you want to leave a message for from the Messages sub-menu, as in the following:



You will then be asked for the message you want to leave. If there is another message waiting, it will be displayed.



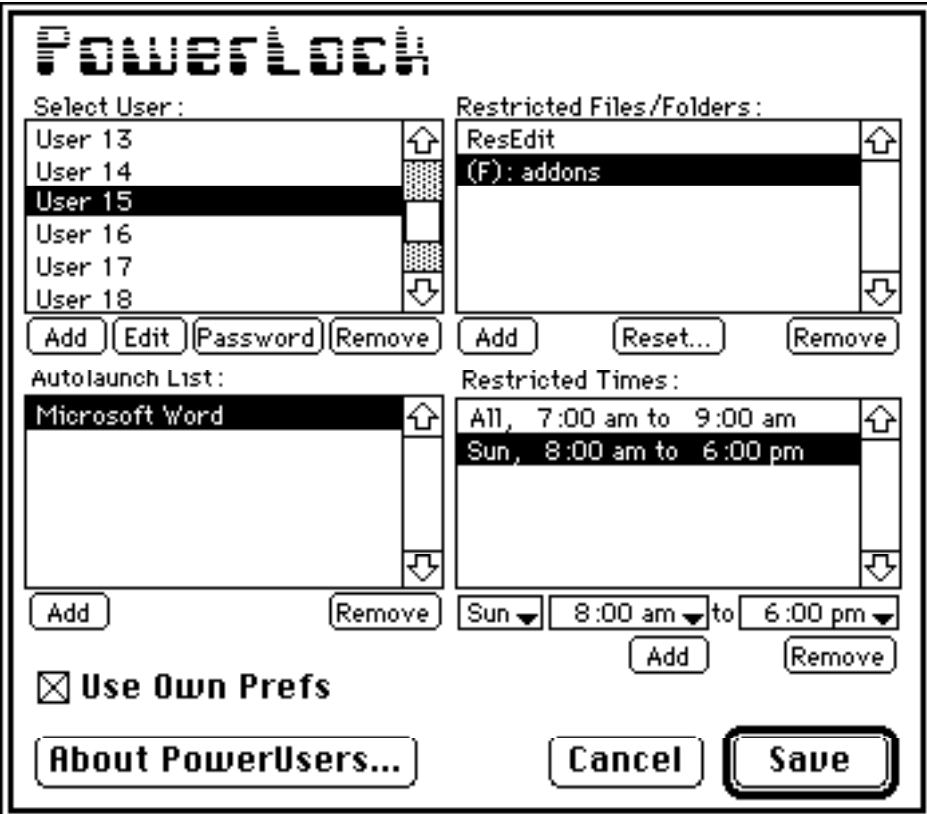
Notes:
PowerMessages does not operate unless a userlist is already established in PowerLock.
Each person can have only one message waiting.
Messages are saved in the Preferences file.

AccessTimes

AccessTimes is no longer supported - it has been replaced by a new and much more powerful addOn, PowerUsers.

PowerUsers

PowerUsers is a powerful tool for those people who share their Macintosh with others. It continues the concept of the "SuperUser" - the person who sets access rights etc. The following diagram shows how PowerUsers looks when selected. It is accessed from the Preferences dialog - the User List button becomes "PowerUsers" and the standard PowerLock User List is no longer available.

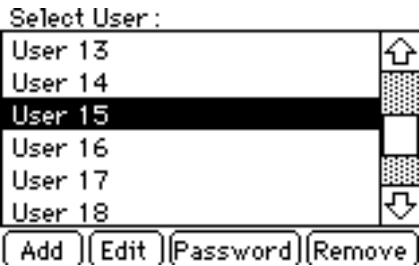


First, a note about the Save button. Whenever the button says Save, you have made some changes for the currently selected user which have not yet been saved. You can cancel those changes simply by

POWERLOCK ADDONS MANUAL

clicking Cancel. Whenever you select another user, your changes for the previous user are automatically saved and the Save button changes to Okay.

Now, let's look at each area of the dialog in turn.



This is where you add, change or remove users. It functions as the replacement to the standard PowerLock User List dialog. To add a new User, simply click the **Add** button and fill in the new user name. The password is automatically set to the same as the username, including the mix of capitals and lowercase letters that you specify. To change a user name, click on it and select **Edit**. The password will automatically be reset to the new name. If you just want to reset the password, click **Password** and click Yes to confirm. **Remove** deletes the user name from the list. The entry will initially show as • DEL • but will be removed once the dialog is closed.



The Restricted Files/Folders box allows you to specify a set of files and folders which the currently selected user cannot access. Click the **Add** button to add a new file or folder. You will see a standard file selection dialog with the two buttons **File** and **Folder**. Click **Folder** when a folder name is highlighted and click **File** when you have highlighted a file name. Folders are shown with (F): before them in the list. To remove a file or folder from the list, click the one you want to remove and click **Remove**. Whenever the specified user logs in, the listed files and folders will be hidden from them. They will be restored as soon as someone who is permitted to access them logs in.

If you suspect that some files or folders have gone missing, you can restore them by clicking on **Reset...** This will restore all files and folders that PowerUsers knows about. System 7 users can also restore all hidden files and folders, regardless of whether PowerUsers was used. Simply cycle through the listed files responding to the questions as you go.

Note: to ensure files are hidden from view, you should not leave them on the desktop.



PowerUsers can automatically launch a list of applications that you specify. This is in addition to System 7's StartUp Items folder and SuperHelper's simulated StartUp Items folder for System 6 users. Each user can have a separate list of applications. System 7 users can also include documents in the list and PowerUsers will launch the application that created the document along with the document. Click on **Add** to add a new application or document and click **Remove** to remove them from the list.

POWERLOCK ADDONS MANUAL

Restricted Times :

All, 7:00 am to 9:00 am	↑
Sun, 8:00 am to 6:00 pm	
	↓

Sun 8:00 am to 6:00 pm

[Add] [Remove]

You can limit what days and times each user can access your Macintosh. To add a restricted time, first pop up the day menu by holding down the mouse over the first box with the popup triangle. Select All if you want the restriction to apply to all days of the week or select the particular day you require. Then pop up the starting time menu, select Morning or Afternoon and choose the appropriate time. Do the same for the second time box. When you are satisfied with the entries in the boxes, click **Add** to add it to the time list.

If the person tries to log in during a time period that is restricted, they will receive a message asking them to come back. For instance, if User 15 tries to log in at 2:30pm on a Sunday they will be told that they should come back after 6pm.

Use Own Prefs

This option lets the specified user establish their own set of Preferences. They will have full access to the Preferences dialog in PowerLock. Initially the Preferences will be the same as the main PowerLock preferences. However, whenever this user saves the Preferences changes, they will be updating only their own copy. Use this option cautiously.

*A note about **Everyone**:*

To save you entering the same information for every single user, you can establish some defaults simply by selecting the user, Everyone. All options you select for Everyone will apply to all users. You then only need specify additional restrictions as necessary.

PowerUsers Limits:

Maximum Users:	99
Per User -	
Maximum Protected Files/Folders:	20
Maximum Autolaunch Apps/Documents:	10
Maximum Time Ranges:	10

Note: PowerUsers limits have been set arbitrarily in order to conserve memory. If these limits cause you problems, please contact the author who can issue a special release with the limits that you require.

SaferShutDown

Note: For System 7 Users Only

PowerLock, as supplied, shuts down the Macintosh after three unsuccessful password attempts, after a specified period of inactivity, or when someone selects the Shut Down button. PowerLock takes control of the Shut Down process and guarantees that the Macintosh will shut down immediately. A side effect is that, if you have any open applications with unsaved work, the unsaved changes will be lost. The SaferShutDown AddOn has been supplied to alleviate this side effect.

SaferShutDown works by simply asking the Finder to take control of the Shut Down process. In this way, each application is closed and, if there are any unsaved documents, you will be prompted to save them. Because the Finder is handling the Shut Down, you won't hear PowerLock's Shut Down sound. The Shut Down will be recorded in the log as a 'Safe Shut Down'.

Why not use SaferShutDown all the time? Because the Finder's Shut Down process can be temporarily postponed simply by selecting Cancel when prompted to save any changes. The Macintosh will eventually shut down but it gives someone access to any open applications and therefore to documents on your hard disk. SaferShutDown is most useful when used in conjunction with Hide.



SuperHelper



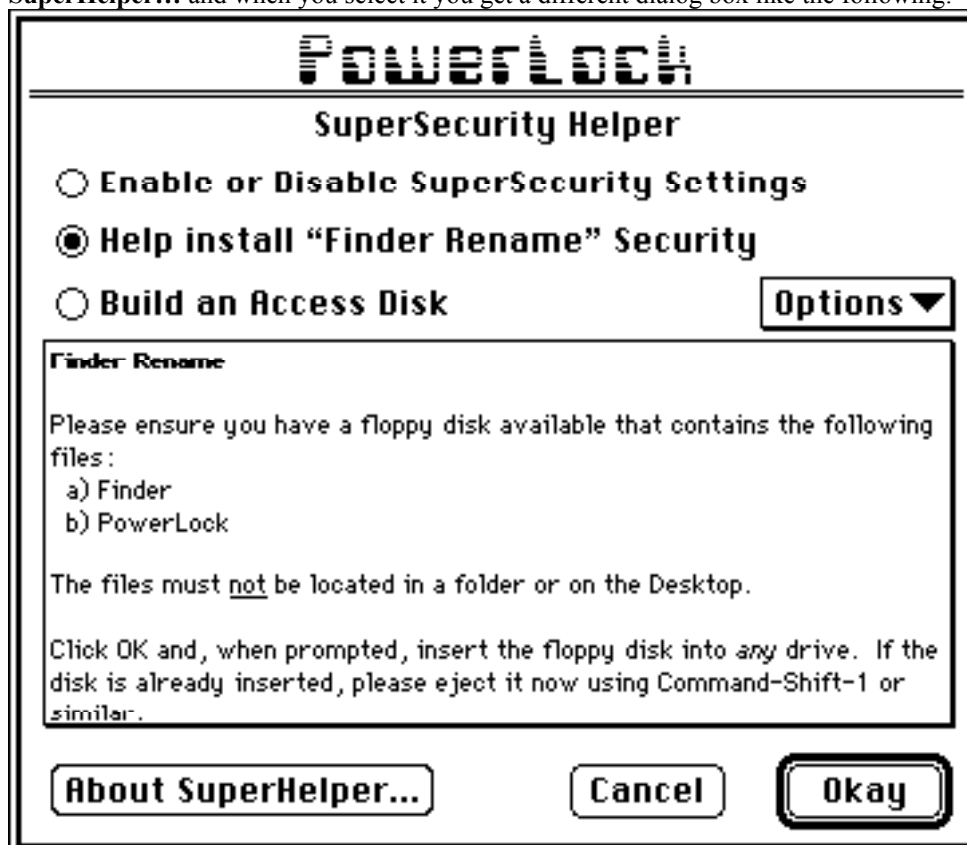
POWERLOCK ADDONS MANUAL

SuperHelper is in the early stages of development. However, it has been included with this PowerLock release in order to provide an easier means of establishing SuperSecurity options, particularly Finder Rename.

The features of SuperHelper that currently operate are:

- * assistance with installation of the Finder Rename option
- * automatic launching of the StartUp Items folder, which Finder Rename usually prevents - this includes the opening of any folders, documents, sounds etc.
- * provision of a StartUp Items folder for System 6 users. Put a folder called StartUp Items inside your System folder, then whatever applications are contained in the folder will be automatically launched when you finish with PowerLock.

SuperHelper is reasonably straightforward. When active, the SuperSecurity button on the Preferences dialog changes to **SuperHelper...** and when you select it you get a different dialog box like the following:



The first option, Enable or Disable SuperSecurity Settings, merely takes you to the standard SuperSecurity dialog. The picture above shows how to use the SuperHelper to help install Finder Rename.

The Options menu allows you to lock or unlock any online disk or volume. This works only with Registered copies of PowerLock. Take care when locking your startup disk as this may cause your System file to become "unblessed" and you may not be able to boot from the disk.

Planned AddOns

The file, Release 3 Announcement, includes details of more AddOns that are planned or currently being tested.

PowerLock Developers Kit

This kit enables you to write your own AddOns for PowerLock. All you'll need is THINK Pascal™ or a similar Pascal development environment. C Programmers should be able to use the kit with only minor changes.

POWERLOCK ADDONS MANUAL

The Developers Kit includes a full reference manual to the AddOn Technology Applications Programming Interface (API). It includes a Pascal interface file for handling PowerLock messages and callbacks. Sample source code of some released AddOns is also provided.

The Developers Kit should be available from the same place that you obtained PowerLock from. If you can't find the Developers Kit, please use the Registration Form in the main PowerLock manual to order your copy of the kit and to become a registered developer.

