

World Time for Windows 3.0

Version 0.3

Copyright © 1991 David I. A. Sayed. All Rights Reserved

Introduction

World Time for Windows is a desk accessory which displays the time at various locations all around the world. You can have as many instances of the program as Windows will allow. This application will only function in Standard or 386 Enhanced Mode (not Real Mode!).

Disclaimer

This version of World Time for Windows is distributed as "freeware" (i.e. it has been placed into the public domain). You are encouraged to disseminate this software, providing it is distributed in its entirety and without charge (except for media and handling, if applicable). I reserve the right to change these restrictions in future versions. World Time for Windows is distributed without warranty, either expressed or implied. No guarantee as to its suitability for a particular task is given. No responsibility is assumed for any consequential loss or damages arising from its use.

Installation

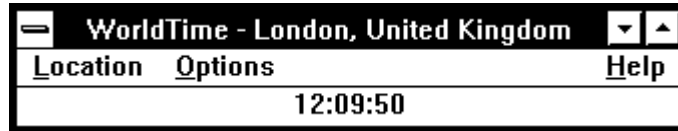
World Time for Windows is distributed as a ZIP file. Simply make a sub-directory for it and un-ZIP the file. The following files are included:

WRLDTIME.EXE - Windows executable
WRLDTIME.DOC - Manual in Word for Windows format
WRLDTIME.WRI - Manual in Windows Write format
README.TXT - General information

Only the executable is required to use World Time for Windows. Before using any new piece of software, it is always advisable to make a complete backup of your hard-disk (or at least all the non-recreatable files).

You should now use the File Manager or Program Manager to add World Time for Windows to one of your application groups. If you do not know how to do this, please refer to the Microsoft Windows Version 3 User's Guide, Chapter 3: Program Manager, Changing the Contents of Groups (pages 88 *et seq.*). You should now set the TZ (time zone) environment string for your area as detailed in "Setting the TZ Environment String" below.

To start the program, simply double click on its icon. The following window should appear:



Initially the time in London, United Kingdom is displayed. Selecting the Location item on the menu bar displays a list box containing other locations:



Select any location by clicking on it and pressing the OK button (or simply double click on the location). The display in the main window changes to reflect your selection. In this release, over 80 locations in 23 countries are included.

World Time for Windows knows about every state capital in the United States. Support for Daylight Savings Time (DST) is also available through the MS-DOS environment string TZ (see below). You may have multiple instances of World Time for Windows, so that the time in New York, Paris, and Moscow could be on the screen before you . The number of instances is limited by the number of timers available in Windows. The maximum in this version of Windows is 16.

Setting the TZ Environment String

World Time for Windows relies on the current setting of the TZ environment string for information on Daylight Savings Time (DST). Note that you should make a backup copy of your AUTOEXEC .BAT file before modifying it. For full functionality, you should add the following line to your AUTOEXEC .BAT file:

```
set TZ=GMT0BST
```

This information is correct for the British Summer Time in the United Kingdom. If you are elsewhere, the format will be different. The format of the TZ environment variable is:

TZ=zzz [+/-] d[d] [111]

zzz represents the name of the current time zone (e.g. GMT, EST, PST, etc...)

[+/-] d[d] is an optionally signed number with one or more digits. It represents the difference between the local time zone and GMT in hours. Positions to the east will be negative, whilst those to the west are positive. So that continental Europe will be -1, EST will be +5 and PST will be +8. 111 is optional and represents the local time zone Daylight Savings Time. You can put any string you like here; it simply increments the hours by one. If this field is not set, the hours will not be incremented. Examples:

<u>Location</u>	<u>Daylight Savings Time</u>	<u>TZ Setting</u>
New York, NY, USA	No	EST5
New York, NY, USA	Yes	EST5EDT
Los Angeles, CA, USA	No	PST8
Los Angeles, CA, USA	Yes	PST8PDT
Paris, France	No	GMT-1
Paris, France	Yes	GMT-1DST

For further information on how MS-DOS handles time settings and time zones, you are referred to the Library Reference manual for a C compiler (i.e. Borland C++ 2.0 Library Reference).

Revision History

Version 0.3

- Screen flicker eliminated.
- Option to toggle the display of seconds.
- Caption text shows location, as does minimized icon.

Version 0.2

- Fixed 'next-day' bug.
- Added support for non-integer time differences.

Version 0.1

- Initial version - never released.

Feedback

I want your feedback! Please tell me what you want to see in future releases. A bigger and better version is on the way, and will feature a world map from which you can pick locations. You can get in touch with me by e-mail, fax or letter:

Internet E-mail:

david@sig.ee.ic.ac.uk or sayed@teach.ee.ic.ac.uk

Facsimile:

+44 71 823 8125

C:\WORD\DAS.DOTWORLD TIME FOR WINDOWS MANUAL

Letters:

David Sayed,
Department of Electrical Engineering,
Imperial College of Science, Technology and Medicine,
Exhibition Road, London SW7 2BX, United Kingdom.