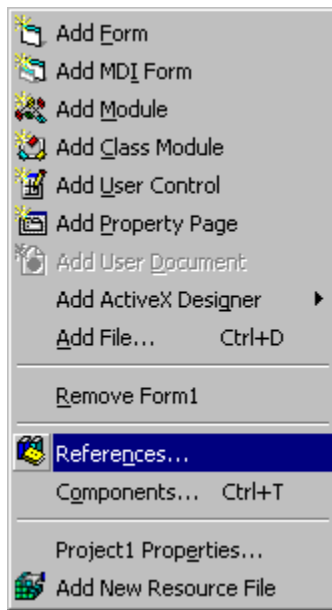


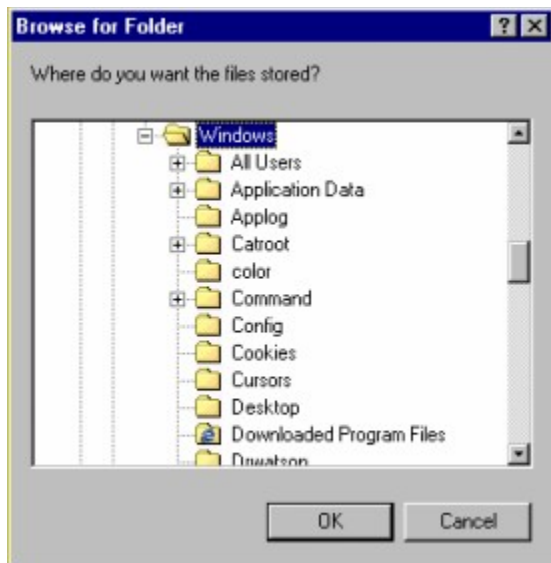
gcjrWinDialogs is an ActiveX DLL created with Visual Basic 5, and is intended to be used with 32-bit VB4 or above. This DLL simplifies calling various dialogs provided by Windows, to which VB doesn't provide easy access.

This help file explains how to call the various procedures contained in the DLL.

If you have any problems, please send the to glenn@gcjr.com.

In order to use "gcjrWinDialogs", you must first add it to your project references. Once referenced, you can call the functions as if they were a part of the VB environment.





This dialog allows the user to select a folder on their system.

Syntax:

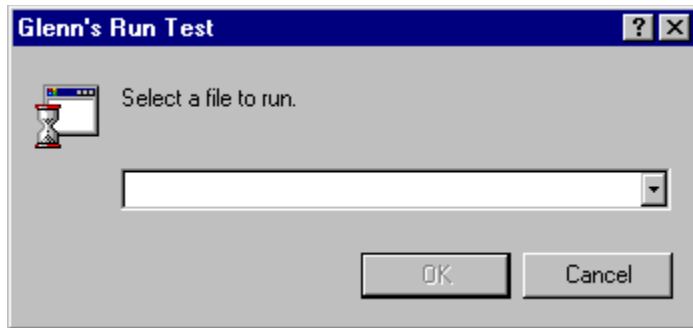
```
sPath = gcBrowseForFolder(hWnd, [DialogText], [StartFolder])
```

hWnd The handle of the form calling the dialog.

DialogText The text displayed at the top of the dialog.

StartFolder Allows you to pre-select a folder before the dialog is created.

The returned string is the path selected by the user.



Syntax

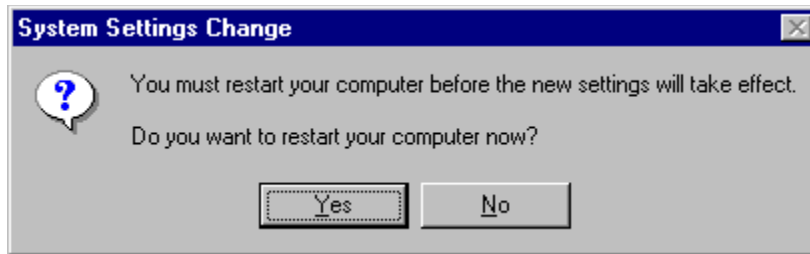
gcRunDialog hWnd, [sTitle], [sPrompt], [NoLastRunMRU]

hWnd The handle of the form calling the dialog.

sTitle	Text to be displayed on the titlebar.
--------	---------------------------------------

sPrompt Text to replace the default prompt.

NoLastRunMRU	A boolean value indicating if you want the last file used with the "Run" dialog to be selected when the dialog appears.
---------------------	---



Syntax:

gcRestart **hWnd**, [**sPrompt**], [**uFlag**]

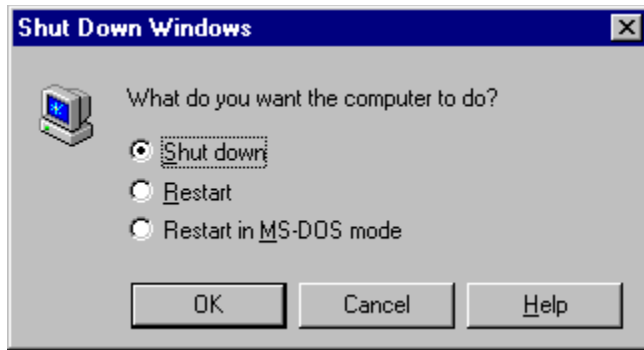
hWnd The handle of the form.

sPrompt Adds your own prompt in front of the default. (Does not replace the default prompt.

uFlag If set to "NoPrompt", the system will reboot without the dialog.

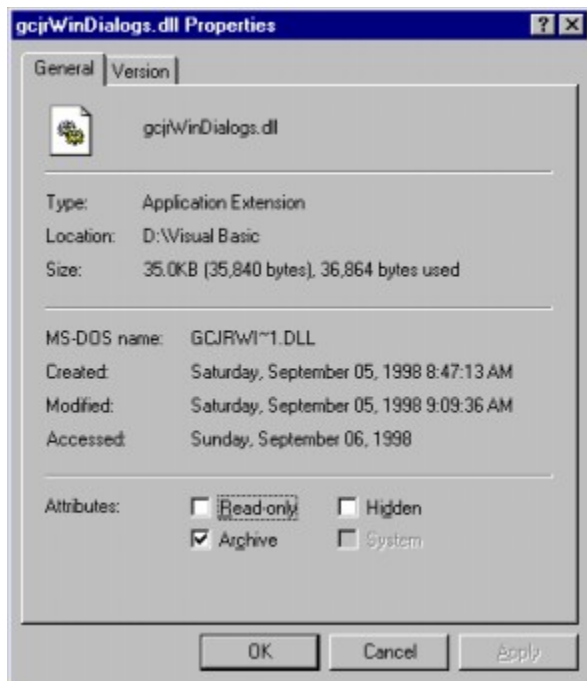
not

the



Syntax:

gcShutDown

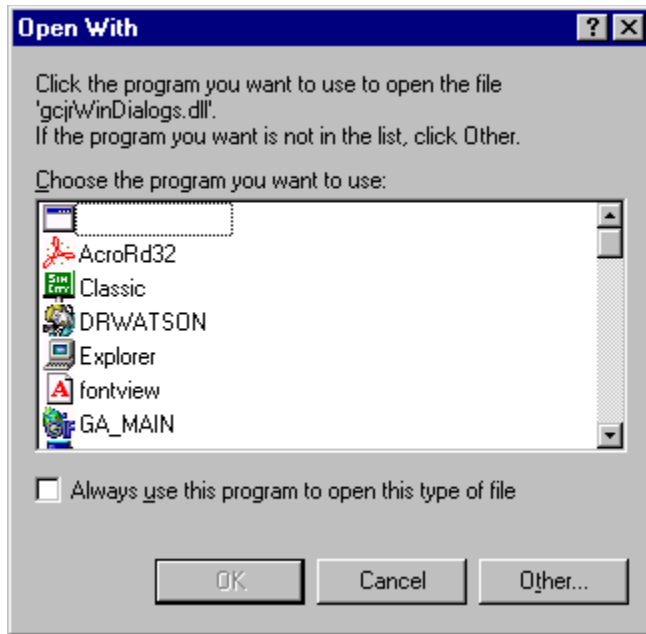


Syntax:

ShowProperties [filename](#), [OwnerhWnd](#)

[filename](#) The full path and filename to display the properties for.

[OwnerhWnd](#) The handle of the form calling the dialog.

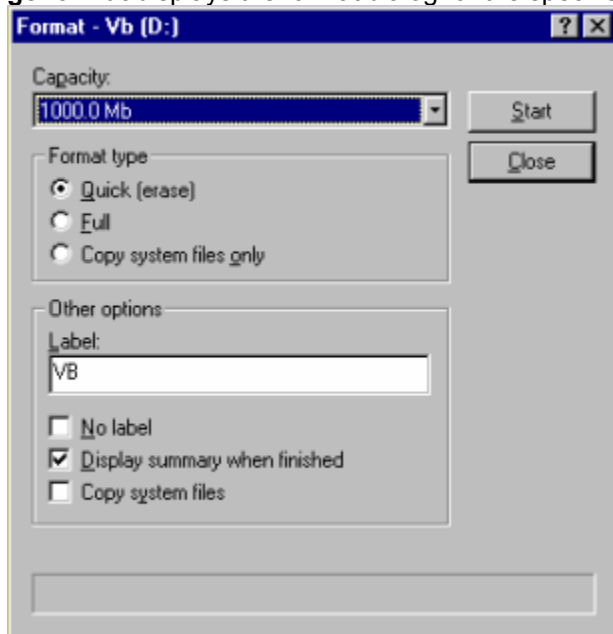


Syntax:

OpenWithDialog [sFullPath](#)

[sFullPath](#) The full path and filename.

gcFormat displays the format dialog for the specified drive.



Syntax:

gcFormat *hWnd*, *drv*

hWnd The handle of the window calling the dialog.

drv A long representing the drive. (0 to the number of system.)

drives on the

Installs a screen saver and displays the "ScreenSaver" tab on the "Display Properties" dialog.

Syntax:

ScreenSaver [sFile](#)

[sFile](#) The filename of the screen saver. The file must in in the "Windows\System" directory.



ControlDialogs displays a number of dialogs; mainly those available from the "Control Panel". Below is a list of the dialogs.



Syntax:

ControlDialogs [d](#)

[d](#) One of the following items. I used a Public Enum so you don't have to remember values.

[ControlPanel](#)

[KeyboardLanguage](#)

[AccGeneralProps](#)

[PrinterFolder](#)

[AccDisplay](#)

[PowerManagement](#)

[AccKeyboard](#)

[ModemWizard](#)

AccMouse

AccSound

AddNewHardware

AddNewPrinter

InstallUninstall

WindowsSetup

StartupDisk

Briefcase

CopyDisk

DateAndTime

TimeZone

SystemHardware

SystemPerformance

Telephony

MMAudio

MMVideo

MMMidi

MMCD

MMAvanced

Sounds

Network

ODBC32

PasswordChange

Regional

RegionalNumbers

RegionalDate

Users

