

WSYWYG
Editor
Functional Specification

DS-000012-1, Release 2,3,0,0

Ektron, Inc.
5 Northern Blvd, unit 6
Amherst, NH 03031
(603) 594-0249
<http://www.ektron.com>
wrogers@ektron.com

Written By: Bill Rogers Date: 6/27/99

Table of Contents

1. Overview.....	2
2. Integration Specifications.....	3
2.1 Development Platform.....	3
3. User Specifications.....	3
3.1 Software.....	3
3.2 Hardware.....	3
4. System Features.....	3
4.1 Ease of Use.....	3
4.2 Word Processing.....	3
5. ColdFusion.....	4
5.1 ColdFusion Custom Tag Attributes <CF_WebEditor>.....	4
5.1.1 Codebase (default = "/controls/").....	4
5.1.2 Version (default = "").....	4
5.1.3 License (default = "").....	4
5.1.4 License2 (default = "").....	4
5.1.5 License3 (default = "").....	4
5.1.6 Height (default = "480").....	4
5.1.7 Width (default = "640").....	4
5.1.8 Font (default = "").....	4
5.1.9 Htmlcode (default = "#inputvalue#").....	4
5.1.10 Form (default = "frmMain").....	4
5.1.11 EditorsInForm (default = "1").....	5
5.1.12 EditorNumber (default = "1").....	5
5.1.13 Button (default = "submit").....	5
5.1.14 FontSize (default = "2").....	5
5.1.15 ButtonsEdit (default = "True").....	5
5.1.16 ButtonsFontSize (default = "True").....	5
5.1.17 ButtonsFontStyle (default = "True").....	5
5.1.18 ButtonsFontColor (default = "True").....	5
5.1.19 ButtonsBullets (default = "True").....	5
5.1.20 ButtonsIndent (default = "True").....	5
5.1.21 ButtonsAlign (default = "True").....	5
5.1.22 ButtonsHyperlink (default = "True").....	5
5.1.23 ButtonsIndent (default = "True").....	5
5.1.24 ButtonsPicture (default = "True").....	5
5.1.25 ButtonsAbout (default = "True").....	5
5.1.26 Hidden Text field that is passed to the next field.....	6
5.1.27 FTPServer (default = "").....	6
5.1.28 FTPUsername (default = "").....	6
5.1.29 FTPPassword (default = "").....	6
5.1.30 ImagesPath (default = "images").....	6
5.2 Editor Usage.....	7
5.2.1 ColdFusion Custom Tag:.....	7
6. ASP:.....	7
6.1 Active X Control.....	7
6.1.1 Version (default = "").....	8
6.1.2 License (default = "").....	8
6.1.3 License2 (default = "").....	8

6.1.4	License3 (default = "").	8
6.1.5	Height (default = "480").	8
6.1.6	Width (default = "640").	8
6.1.7	FontSize (default = "2").	9
6.1.8	FontName (default = "").	9
6.1.9	ButtonsEdit (default = "True").	9
6.1.10	ButtonsFontSize (default = "True").	9
6.1.11	ButtonsFontStyle (default = "True").	9
6.1.12	ButtonsFontColor (default = "True").	9
6.1.13	ButtonsBullets (default = "True").	9
6.1.14	ButtonsIndent (default = "True").	9
6.1.15	ButtonsAlign (default = "True").	9
6.1.16	ButtonsHyperlink (default = "True").	9
6.1.17	ButtonsIndent (default = "True").	9
6.1.18	ButtonsPicture (default = "True").	9
6.1.19	FTPServer (default = "").	9
6.1.20	FTPUsername (default = "").	9
6.1.21	FTPPassword (default = "").	9
6.1.22	ImagesPath (default = "images").	10
7.	Example and free download:	10
8.	Files provided and where to put them	10
9.	FAQ	11
10.	Debug Procedure:	13
10.1	Error	13
10.2	FTP	14
10.3	WDDX:	15
11.	LAN Support	16
12.	ECO History:	17

1. Overview

To purchase or to download the latest editor: <http://www.ektron.com/ewebedit/>

Note to copy WEBEDITOR.CFM into your CFUSION\CUSTOM TAG\ directory

eWebEditor WYSIWYG (What You See Is What You Get) editor for the web. Based on ActiveX technology, the WYSIWYG web editor allows your content management team to cut and paste text directly from Microsoft Word or Word Pad without losing formatting. The WYSIWYG Web Editor also allows content managers to create and edit content in a word processor like environment.

The WYSIWYG Web Editor saves content as HTML which can then be displayed in dynamic web pages without the editor being present. The WYSIWYG Web Editor is a great tool for any content management team that requires easily formatted text to be displayed, but has little or no knowledge of HTML.

The WYSIWYG Web Editor can be used on with any web development platform, including but not limited to Allaire's ColdFusion, Microsoft's Active Server Pages and Perl.

The WYSIWYG Web Editor is a dynamic web browser controlled editor that can read HTML from a hidden field and display it as its original format. The WYSIWYG Web Editor is usable in Microsoft Internet Explorer versions 3+, 4+ and 5+. With its easy integration into any web environment, the On-line WYSIWYG editor will appeal to not

only the end user but also various integrators that want to enhance the functionality of their web applications. The WYSIWYG Web Editor is easy to purchase, install, and use.

2. Integration Specifications

2.1 Development Platform

- Any dynamic Web Server such as Allaire's ColdFusion, Microsoft's Active Server Pages, or Perl.

3. User Specifications

3.1 Software

- Windows9x or WindowsNT 4
- Microsoft IE 3+, 4+ and 5+

3.2 Hardware

- Any PC based system (suggest Pentium 90 as a minimum requirement)

4. System Features

4.1 Ease of Use

- Custom tag interface for Cold Fusion applications
- Entire application only 50Kbytes for speedy web access
- Can paste any .doc or .txt file from MSWord into the editor and maintain original format
- Can store the saved HTML code in a database.
- Sample code for ColdFusion and Active Server Page

4.2 Word Processing

- Has all the common functionality's of MSWord:
 - Cut, Copy, and Paste
 - Undo
 - Font size and color
 - Bold, Italics, and Underline
 - Bullets
 - Indentation
 - Text Alignment
 - Hyperlinks
 - Image insert
 - toolbar is customizable

5. ColdFusion

5.1 ColdFusion Custom Tag Attributes <CF_WebEditor>

5.1.1 Codebase (default = "/controls/")

- *Optional.* The path to the directory where the editor code is present, note if you leave it blank i.e. (**default** = "") the CAB file would be placed in the same directory as your CFM file that contains the control.

5.1.2 Version (default = “”)

- The web designer must enter the version of the WYSIWYG Web Editor contained in the ewebedit.cab file

5.1.3 License (default = “”)

- *Required.* The user should enter the license number of the purchased editor (this license number is provided by Ektron after purchase). (Note: The WYSIWYG Web Editor will display an Invalid License message if the license key is improperly entered. For development purposes the license 127.0.0.1?650630331830908 is included.)

5.1.4 License2 (default = “”)

- *Optional.* To view development code on local PC, the user should enter the license number of the purchased editor preceded by the IP address of the local machine.

5.1.5 License3 (default = “”)

- *Optional.* To view development code on local PC, the user should enter the license number of the purchased editor preceded by the IP address of the local machine.

5.1.6 Height (default = “480”)

- *Required.* The user must enter a height value. Ex: “320”.

5.1.7 Width (default = “640”)

- *Required.* The user must enter a width value. Ex: “560”.

5.1.8 Font (default = “”)

- *Optional.* The user can enter any common Microsoft font.

5.1.9 Htmlcode (default = “#inputvalue#”)

- *Optional* The user inputs a value or a dynamic value from a database to edit. Or if left blank the editor will open up with no text in the editor. The information can contain html formatting information.

5.1.10 Form (default = “frmMain”)

- *Required.* The control requires that it be placed in a form so that the WYSIWYG formatted text may be converted transferred to a field accessible to HTML.

5.1.11 EditorsInForm (default = “1”)

- *Required.* The number of editors in the form

5.1.12 EditorNumber (default = “1”)

- *Required.* The number of the current editor in the form.

5.1.13 Button (default = “submit”)

- *Required.* Button is the name of the input type that submits the form data.

5.1.14 FontSize (default = “2”)

- *Required.* 1-7. If you start to type the default font size is

5.1.15 ButtonsEdit (default = “True”)

- *Optional.* Will edit Button appear in the toolbar.

5.1.16 ButtonsFontSize (default = “True”)

- *Optional.* Will Button appear in the toolbar.

5.1.17 ButtonsFontStyle (default = “True”)

- *Optional.* Will Button appear in the toolbar

5.1.18 ButtonsFontColor (default = “True”)

- *Optional.* Will Button appear in the toolbar

5.1.19 ButtonsBullets (default = “True”)

- *Optional.* Will Button appear in the toolbar

5.1.20 ButtonsIndent (default = “True”)

- *Optional.* Will Button appear in the toolbar

5.1.21 ButtonsAlign (default = “True”)

- *Optional.* Will Button appear in the toolbar

5.1.22 ButtonsHyperlink (default = “True”)

- *Optional.* Will Button appear in the toolbar

5.1.23 ButtonsIndent (default = “True”)

- *Optional.* Will Button appear in the toolbar

5.1.24 ButtonsPicture (default = “True”)

- *Optional.* Will Button appear in the toolbar

5.1.25 ButtonsAbout (default = “True”)

- *Optional.* Will Button appear in the toolbar

5.1.26 Hidden Text field that is passed to the next field

- Texthtml(Number) This is number is EditorNumber. This field is the field that will contain the html. It is this field that gets passed to your action page. Then your action page could write the value of to the database.
- So if you have only one editor in the form the hidden field passed is texthtml1 if two editor then the 2nd html field passed would be texthtml2

5.1.27 FTPServer (default = “”)

- *Optional.* Something like <ftp.dfafafafd.com> or 100.100.100.43
- or <ftp.dfafafafd.com> \joe\images
-

5.1.28 FTPUsername (default = “”)

- *Optional.* Leave blank for anonymous
-

5.1.29 FTPPassword (default = “”)

- *Optional.* Leave blank for anonymous
- Note this **password is Encrypted** you need to contact Ektron to receive a password generator, there is no charge for this, we don't send them out with the demo.

5.1.30 ImagesPath (default = “images”)

- *Optional.* This will be added before the image name in the hyperlink info. It is the relative path to the image
- Example if your upload logo.jpg FTP up ftplocation/logo.jpg now the image location in HTML will use the name logo.jpg and add the imagespath before it images/logo.jpg Your images could even be uploaded to another server.

5.1.31 BackColor & ForeColor

BackColor as OLE_COLOR

ForeColor as OLE_COLOR

These assign a background color to the window and the default font color, respectively.

In VBScript, specify a color as a hexadecimal number using this syntax:

&HBBGRR

The BB specifies the amount of blue, GG the amount of green, and RR the amount of red. Each of these fragments is a two-digit hexadecimal number from 00 to FF. The median value is 80. Thus, the following number specifies gray, which has the median amount of all three colors:

&H808080

NOTE: The background color does not affect the HTML actually emitted. It is up to the host application to set the background color attribute in the body tag.

5.2 Editor Usage

5.2.1 ColdFusion Custom Tag:

```
<form name="frmMain" action="submitdata.cfm" method="post">
  <CF_WebEditor
    Codebase=""
    Version="2,0,0,0"
    License="127.0.0.1?650630331830908"
    License2=www.someurl.com?28007505640289225584210
    License3=www.someother.com?22232323343545455656565676
    Font="verdana"
    Width="480"
    Height="640"
    HTMLCode="#q_query.contentfieldname#"
    Form="frmMain"
    EditorsInForm="1"
    EditorNumber="1"
    Button="btnSubmit"
    button="Button"
    AllowCustomize="True"
    ButtonsEdit="True"
    ButtonsFontSize="True"
    ButtonsFontStyle="True"
    ButtonsFontColor="True"
    ButtonsBullets="True"
    ButtonsIndent="True"
    ButtonsAlign="True"
    ButtonsHyperlink="True"
    ButtonsPicture="True"
    ButtonsAbout="True"
    WDDX="#WDDXPACKET#"
    BackColor="#hffffff"
    ForeColor="#h000000"
  >
  <input type="Submit" name="btnSubmit" value="Submit Article">
</form>
```

The Custom Tag now returns TextHTML(EditorNumber)

Note: This custom tag can be placed anywhere in the main body of code. If only 1 in the form then

6. ASP:

6.1 Active X Control

```
<object id="eWebEdit1" name="eWebEdit1"
  classid="clsid:5D479C55-C4BA-11D2-B97C-002078159EC3"
  CODEBASE="eWebEdit.CAB#version=2,0,0,0"
  border="0" width="640" height="480">
  <param name="License" value="127.0.0.1?650630331830908">
  <param name="License2" value="">
  <param name="License3" value="">
  <param name="TextHTML" value="">
  <param name="TextRTF" value="">
  <param name="AllowCustomize" value="True">
```



```

<param name="FontSize" value="2">
<param name="FontName" value="New Times Roman">
<param name="ButtonsEdit" value="True">
<param name="ButtonsFontSize" value="True">
<param name="ButtonsFontStyle" value="True">
<param name="ButtonsFontColor" value="True">
<param name="ButtonsBullets" value="True">
<param name="ButtonsIndent" value="True">
<param name="ButtonsAlign" value="True">
<param name="ButtonsHyperlink" value="True">
<param name="ButtonsPicture" value="True">
<param name="ButtonsAbout" value="True">
<cfparam name="Attributes.FTPServer" default="ftp.idontknow.com">
<cfparam name="Attributes.FTPUsername" default="">
<cfparam name="Attributes.FTPPassword" default="">
<cfparam name="Attributes.ImagesPath" default="images">
<param name="BackColor" value=&hff0000>
<param name="ForeColor" value=&hffffff>

</object>

```

Note: This code can be placed anywhere in the main body of code.

6.1.1 Version (default = “”)

- The web designer must enter the version of the WYSIWYG Web Editor contained in the ewebedit.cab file

6.1.2 License (default = “”)

- *Required, i.e at least one license key is required.* The user should enter the license number of the purchased editor (this license number is provided by Ektron after purchase). (Note: The WYSIWYG Web Editor will display an Invalid License message if the license key is improperly entered. For development purposes the license 127.0.0.1?650630331830908 is included.)

6.1.3 License2 (default = “”)

- *Optional.* To view development code on local PC, the user should enter the license number of the purchased editor preceded by the IP address of the local machine.

6.1.4 License3 (default = “”)

- *Optional.* To view development code on local PC, the user should enter the license number of the purchased editor preceded by the IP address of the local machine.

6.1.5 Height (default = “480”)

- *Required.* The user must enter a height value. Ex: “320”.

6.1.6 Width (default = “640”)

- *Required.* The user must enter a width value. Ex: “560”.

6.1.7 FontSize (default = “2”)

- *Required.* 1-7. If you start to type the default font size is

6.1.8 FontName (default = “”)

- *Optional* Ariel, all standard Fonts

6.1.9 ButtonsEdit (default = “True”)

- *Optional.* Will edit Button appear in the toolbar.

6.1.10 ButtonsFontSize (default = “True”)

- *Optional.* Will Button appear in the toolbar.

6.1.11 ButtonsFontStyle (default = “True”)

- *Optional.* Will Button appear in the toolbar

6.1.12 ButtonsFontColor (default = “True”)

- *Optional.* Will Button appear in the toolbar

6.1.13 ButtonsBullets (default = “True”)

- *Optional.* Will Button appear in the toolbar

6.1.14 ButtonsIndent (default = “True”)

- *Optional.* Will Button appear in the toolbar

6.1.15 ButtonsAlign (default = “True”)

- *Optional.* Will Button appear in the toolbar

6.1.16 ButtonsHyperlink (default = “True”)

- *Optional.* Will Button appear in the toolbar

6.1.17 ButtonsIndent (default = “True”)

- *Optional.* Will Button appear in the toolbar

6.1.18 ButtonsPicture (default = “True”)

- *Optional.* Will Button appear in the toolbar

6.1.19 FTPServer (default = “”)

- *Optional.* Something like <ftp.dfafafafd.com> or 100.100.100.43
- or <ftp.dfafafafd.com> \joe\images
-

6.1.20 FTPUsername (default = “”)

- *Optional.* Leave blank for anonymous

6.1.21 FTPPassword (default = “”)

- *Optional.* Leave blank for anonymous

- Note this **password is Encrypted** you need to contact Ektron to receive a password generator, we do not send them out with the demo, only to customers that buy the product.

6.1.22 ImagesPath (default = “images”)

- Optional. This will be added before the image name in the hyperlink info. It is the relative path to the image
- Example if your upload logo.jpg FTP up ftplocation/logo.jpg now the image location in HTML will use the name logo.jpg and add the images path before it images/logo.jpg Your could even be uploaded to another server.

6.1.23 BackColor & ForeColor

BackColor as OLE_COLOR

ForeColor as OLE_COLOR

These assign a background color to the window and the default font color, respectively.

In VBScript, specify a color as a hexadecimal number using this syntax:

&HBBGGRR

The BB specifies the amount of blue, GG the amount of green, and RR the amount of red. Each of these fragments is a two-digit hexadecimal number from 00 to FF. The median value is 80. Thus, the following number specifies gray, which has the median amount of all three colors:

&H808080

NOTE: The background color does not affect the HTML actually emitted. It is up to the host application to set the background color attribute in the body tag.

Sample ASP application to read the content from a record in the database to the editor and update it and display it as HTML.

index.asp start page

edit.asp ASP code reads a record from the database into a hidden field, vbscript moves the content of the hidden field into the editor

update.asp clicking the save button in edit.asp, causes vbscript to move the content out of the editor into a hidden field and post the contents of the hidden field to this page. update.asp ASP code writes the content to the database

preview.asp ASP code reads a record from the database and displays the html data.

7. Example and free download:

Example <http://www.ektron.com/ewebedit/>

Download: <http://www.ektron.com/ewebedit/download.cfm>

8. Files provided and where to put them.

Files in this directory

1. WebEditor.cfm Copy to the CF server directory CFUSION\CustomTags\WebEditor.cfm
Note when you call this function you will use <CF_Webeditor ... the CF_ tells ColdFusion to look first in the local directory then in the Custom Tags directory.
2. If you want studio to have tag insight or tag help support then i.e. in studio when you click on the tag and click the space bar. CF_WebEditor.vtm Allaire Tag Editor Template Copy this file to c:\Program Files\Allaire\ColdFusion Studio4\Extensions\TagDefs\VTML\

3. eWebEdit.CAB put this on the server in the local directory, i.e. that is directory for example wwwroot/ewebedit/ In this directory Unzip the files here.

4. demo.cfm standalone test for the WebEditor

This is a simple demo

In IE browser address field enter

127.0.0.1/ewebedit/demo.cfm

You will be asked to install a CAB file from www.ektron.com, then click Yes to accept, (Note if you ran the demo from our site, this step may have already occurred).

What the demo does. You will see the editor, Enter some text, change the color and size and click the Save button. The information will be posted back to demo.cfm but displayed as HTML

5. **From ColdFusion Using with a Database.** index.cfm, edit.cfm, preview.cfm and editor.mdb demonstrate the editor with a database.

Using the CFAdministrator or from the Control panel ODBC, setup editor.mdb as an ODBC source. 127.0.0.1/ewebedit/index.cfm

Starting with index.cfm you will see 5 examples of eyeglasses and a edit pad. Clicking on the edit pad you will cause the edit.cfm to load, pull data from the database and display the data. Edit the Text and click the Save button. Clicking the eyeglasses calls preview.cfm that will display the information as HTML

6. **Using ASP** Example database application. Use files index.asp, edit.asp, update.asp, and preview.asp. Note you need to register editor.mdb as an ODBC source. A simple example that does not use a database is demo.asp and output.asp is sample Active Server page software (note we will update this shortly with a database example) You will use the active X control. Plus you will need the CAB file.

7. When you buy a key put the new key at license2="" between the quotes. And yes the ? mark should be in the string. When you buy a key you will give us a domain name like www.mydomain.com typically not an IP address.

Note this code has a key for http://127.0.0.1 other IP address or domain names will not work.

CF_WebEditor:

name=Active X id and object name, If you have a second editor this name needs to be unique per editor.

codebase=path to the directory, If left blank then local path

version=Version number needs to agree with CAB file version number

license= If you run your browser on the local server the editor will work 127.0.0.1 means your local machine, we also test for C: and no license is required

license2= Support 2 license key for the production server and test server.

font= We globally set the Font

width= Width of the Editor Control

height= Height of the Editor Control

htmlcode=When the editor starts, what is written to this field will show up in the editor.

form="frmMain" The control will need to be in a form so when you post the form the returnfield is posted as a hidden field

returnfield="HTMLReturn" If 2 editors make sure you call it two different

button="Button"> The name="XXXXX" of the Button used to submit the form.

9. FAQ

1. **What are the terms of the license Agreement that is distributed with the EWebEdit Active X Control?**
EWebEdit includes a license to display the Editor in multiple locations on ONE web site (one domain). Ektron does have discount pricing on Quantity greater than 4 .
2. **What is the security key and how does it work**
EWebEdit distributed with a custom security key(s) which contains the URL(s) registered by the purchaser. EWebEdit communicates with this key to determine if the document being viewed is located within the base URL to which the EWebEdit Active X control is registered. This feature uniquely associates a license with the purchaser and acts as a security mechanism, such that, visitors to your site will not be able to copy the software for their own use.
3. **Where will the EWebEdit Active X control be able to run**
EWebEdit Active X will run on any local system and on the internet so long as the name part of the base URL (e.g. www.mydomain.com) appears within the documents URL location. (Note: only the base URL is checked, meaning that the EWebEdit will work from the root directory and all sub directory levels.)
4. **Where do you use this editor:** Dynamic content on a Web is typically maintained through an administrator. For example if you needed to maintain news articles for your web site, the administration section for the news articles would typically have text area fields to input or edit content. But with a text area field the only way to format the information, (Bold, new paragraph, center...) is to use html tags in the text area field. This has two problems, you can't visualize what it looks like, and you have to train your content providers to use HTML tags. The solution, **CF_WebEditor** a WYSIWYG editor that generates HTML output. Plus if you want to update an article you can input html into the **CF_WebEditor**. Note that it saves the HTML information that you would find between the body tags, but not including them.
5. **Updates:** At any time you can download the demo, and use the new CAB file, but make sure you update the version number in your code that contains the control or CF_WEBEDIT tag.
6. **Limitations:** It is an Active X control, so Netscape needs an Active X plug in to work. We have not tested this yet.
7. The editor was design to generate html code and read it back for editing or display. If the editor did not generate the html code you could get back JUNK (for example you may have an existing database of entered information). We don't process all HTML tags. We are looking into a solution.
8. **More than 1 editor on the same admin page.** A bug in the ColdFusion custom tag has been corrected to allow multiple tag support in a single form. Update your vtm and custom tag files if your version is dated earlier than 4/7/99 This has changed the format of the Custom Tag. If your version is less than 1,4,0,8 you need to copy this webeditor.cfm file into the ColdFusion\Custom Tag directory.

9. **Can the editor work with any database.** Yes it does not matter what database you use. The editor does not talk with the database. The editor's HTML output is moved to hidden Then the hidden field is posted and processed by the page the form was posted to.
10. **Can the editor generate other types of output other than HTML.** Yes it can generate RTF output. In the Active X control `<param name="TextRTF" value="">`
11. **Toolbar is customizable.** Double click on the toolbar to customize it.
12. Using the control in an unlicensed environment will cause an invalid license message to appear. It is possible to save this text and overwrite valid content.

10. Licensee and liability

Ektron Inc. will not be held responsible for any problems experienced in the installing or using of this product. A license key is for one URL i.e. a domain name like www.ektron.com

Where to put the License:

When you buy the editor, you will receive a License key for your url,
If your url was www.mycompany.com then the license key would be something like
`www.mycompany.com?123456789`

In the example code that we provide `edit.cfm`, `demo.cfm`, `demo.asp` and `webeditor.htm`
Search for `License2` and replace that line with.

```
License="127.0.0.1?650630331830908"  
License2="www.mycompany.com?123456789"  
License3="www.mycompany2.com?123456789"
```

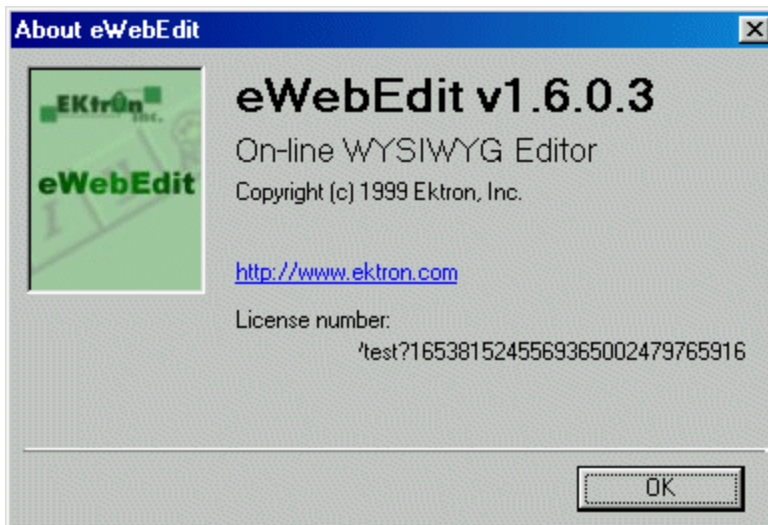
You could of also replace `License="127.0.0.1?650630331830908"`

Note that we support 3 License keys.

10. Debug Procedure:

1. Can you view <http://www.ektron.com/ewebedit> and run the demo there?
2. Have you installed `ewebedit.cfm` in the Custom Tag directory?
3. Open the web-page that has the editor in it. Click properties. What does the address field have as a value
example: http://www.ektron.com/ewebedit/edit.cfm?edit_id=2

Now in the editor Click on the ? button



Your address field would have to contain the License that is shown in this case it would either have to contain www.ektron.com or 127.0.0.1

4. Is the License match with what you are calling it.

10.1 Error

This can be caused by

- It can't locate one of the CAB file
- Version number don't match CAB file ewebedit.inf For example if edit.cfm had version=2,3,0,0, but the CAB file was 1,6,0,3 then the browser would attempt to load the CAB
- The problem may be that you moved the Custom Tag to a directory that CF is not looking for it, this typically happens when you install CF a second time but change the directory thus you end up with 2 Custom Tag directories. Leave webeditor.cfm in the local directory. Typically the custom tag directory is D:\CFUSION\CUSTOM TAGS\ Make sure

Every time I look at the WebEditor it wants to re-install the Control

Most likely you simply need to reboot the machine, a file that the control was using is in use, it won't let you use the new version until you reboot. First Reboot and test. If you still can not get the Correct Version number when you click the ? button, check to see if you updated your version in your code. Then Search your hard drive for ewebedit.ocx make sure that there is only one OCX and one ewebedit.inf file If you click the Cab file and open it you can read the inf version number. Check to see if this version agree with the version in your code

Walk through these steps

In wwwroot make a directory ewebeditor 1. Unzip all the files 2. If you open one of the examples

<http://127.0.0.1/ewebedit/demo.asp> (This will work for both CF and ASP, since ASP is installed)

It assumes you have the CAB file in this directroy, you will get the error if not the case and you have never loaded the control before

Does demo.asp works?

Next test does it work with demo.cfm.

When using the database and you had the wrong License key, If you click Save it will save wrong License key to the database. After you fix the key problem Ignore the error edit the code and click save. Then preview it and see if the license key error goes away.

10.2 FTP

*** FTP with WinProxy:

A "User Name with FTP Host" check box has been added to the Select Picture

File dialog. If checked, the URL of the FTP host will be appended to the FTPUsername property. If not checked, the FTPUsername property will be used as is.

By default, it is checked since this is how the control used to always work.

For example,

Checked: username = FTPUsername & "@" & FTPServer

["anonymous@ftp.ektron.com"](ftp://anonymous@ftp.ektron.com)

Unchecked: username = FTPUsername

"anonymous"

I tested with port 21 and port 8021.

Tested with WinProxy Lite 2.1g and 2.1h.

For example if we were to connect to a proxy server
90.0.0.1 port 8021 vs 21 put 90.0.0.1:8021

There are two wininet functions used to establish an FTP connection. They are InternetOpen and InternetConnect. They are used as shown below.

```
hOpen = InternetOpen("vb wininet", _
                    INTERNET_OPEN_TYPE_PROXY, _
                    szProxy, vbNullString, 0)
```

where...

szProxy is the proxy server name (or ip) entered by the user.

```
hConnection = InternetConnect(hOpen, szServer, _
                              INTERNET_INVALID_PORT_NUMBER, _
                              szUser, szPassword, _
                              INTERNET_SERVICE_FTP, nFlag, 0)
```

where...

szServer is the FTP server name, eg, "ftp.ektron.com\images"

szUser is the user id, eg, "jdoe@ftp.ektron.com" or
"anonymous@ftp.ektron.com"

NOTE: eWebEdit adds "@ftp.domain.com" to the user name entered. I found that this was required for WinProxy.

szPassword is the password entered by the user.

nFlag is either INTERNET_FLAG_PASSIVE or 0 if not passive. User-selectable via check box in dialog box.

See

http://msdn.microsoft.com/workshop/networking/wininet/overview/enable.asp#Linking_proxy_server

for details on specifying the proxy. Several paragraphs are shown here.

Listing Proxy Servers

The Win32 Internet functions recognize two types of proxies: CERN type proxies (HTTP only) and TIS FTP proxies (FTP only). If Internet Explorer is

installed, the Win32 Internet functions also support SOCKS type proxies. InternetConnect assumes, by default, that the specified proxy is a CERN proxy. If the access type is set to INTERNET_OPEN_TYPE_DIRECT or INTERNET_OPEN_TYPE_PRECONFIG, the lpszProxyName parameter of InternetOpen should be set to NULL. Otherwise, the value passed to lpszProxyName must contain the proxies in a space-delimited string. The proxy listings can contain the port number that is used to access the proxy.

To list a proxy for a specific protocol, the string must follow the format "<protocol>=<protocol>://<proxy_name>". The valid protocols are http, https, ftp, and gopher. For example, to list an FTP proxy, a valid string would be "ftp=ftp://ftp_proxy_name:21", where "ftp_proxy_name" is the name of the FTP proxy and "21" is the port number that must be used to access the proxy. If the proxy uses the default port number for that protocol, the port number can be omitted. If a proxy name is listed by itself, it is used as the default proxy for any protocols that do not have a specific proxy specified. For example, "http=http://http_proxy other" would use "http_proxy" for any HTTP operations, while all other protocols (such as FTP and Gopher) would use "other".

By default, the function assumes that the proxy specified by lpszProxyName is a CERN proxy. For example, "proxy" defaults to a CERN proxy called "proxy" that listens at port 80 (decimal). An application can specify more than one proxy, including different proxies for the different protocols. For example, if you specify "ftp=ftp://ftp-gw gopher=http://jericho:99 proxy", FTP requests are made through the FTP proxy "ftp-gw", which listens at port 21 (default for FTP), and Gopher requests are made through a CERN proxy called "jericho", which listens at port 99. All other requests (for example, HTTP requests) are made through the CERN proxy called "proxy", which listens at port 80. Note that if the application is only using FTP, for example, it would not need to specify "ftp=ftp://ftp-gw:21". It could specify just "ftp-gw". An application is only required to specify the protocol names if it will be using more than one protocol per handle returned by InternetOpen.

10.3 WDDX:

The Picture and Hyperlink dialogs have a drop-down list to select the WDDX images or hyperlinks. The supported WDDX field names are:

```
IMAGE_TITLE
IMAGE_LOCATION
IMAGE_WIDTH
IMAGE_HEIGHT
```

```
HYPERLINK_TITLE
HYPERLINK_LOCATION
```

```
FACE_FONT
```

```
<field name='IMAGE_TITLE'><string>Company Logo</string></field><field name='IMAGE_LOCATION'><string>images/logo.jpg</string></field>
```

```

<CFQUERY NAME="getimages" DATASOURCE="editor">
    Select image_title, image_location
    From images
    Order by image_title
</CFQUERY>
<cfwddx action="CFML2WDDX" input="#getimages#" output="ImageWDDXPacket">
<CFQUERY NAME="gethyperlinks" DATASOURCE="editor">
    Select hyperlink_title, hyperlink_location
    From hyperlink
    Order by hyperlink_title
</CFQUERY>
<cfwddx action="CFML2WDDX" input="#gethyperlinks#" output="HyperlinkWDDXPacket">

```

Then

```
<CF_WebEditor
```

```
.....
```

```
WDDX="#ImageWDDXPacket# #HyperlinkWDDXPacket#"

```

```
>
```

The image dialog box and the hyperlink dialog box can be populated with the title of an image and the location i.e. this would be something like ../images/logo.jpg or http://www.ektron.com/logo.gif The title would be logo. It assumes using CFFILE to when images are uploaded via the browser.

Select image_title, image_location, image_date From images Order by image_title

FACE FONT WDDX can be a normal WDDX packet or as simple as

```
<field name="FONT_FACE"><string>Arial</string><string>New Times Roman</string></field>
```

11. LAN Support

eWebEdit on a LAN without Internet access:

The following redistributable cab files must be in the same directory with eWebEdit.cab on the LAN server.

<http://activex.microsoft.com/controls/vb6/ComCtl32.cab>

<http://activex.microsoft.com/controls/vb6/RichTx32.cab>

<http://activex.microsoft.com/controls/vb5/AsyncFilt.cab>

<http://activex.microsoft.com/controls/vb5/MSVBVM50.cab>

We've included them in the eWebEditLan.zip file for your convenience. Note, there are two different eWebEdit.cab files: one for normal Internet use, and another for LAN use without Internet access. Only the inf file in the cab file is different.

12. ECO History:

<u>ECO</u>	<u>Date</u>	<u>Revision</u>		<u>Comments</u>
		<u>From:</u>	<u>To:</u>	
xx	3/13/99	--	1.0	Initial release.

3-19-99 Version 1,3,0,3: License key supports both www.ektron.com and ektron.com.

3-25-99 Version 1,4,0,1: Fixed removing quotes from hyperlinks, remove the replace software now use single quotes.

3-30-99 Version 1,4,0,1: Support for accented characters and images added. A bug in the hyperlink code was fixed that caused an infinite loop to occur and the browser to stop responding.

4-4-99 Version 1,4,0,7: User can now customize his or her toolbar.

4-6-99 Tag updated, problem with CFLOOP in version CF3.1

4-7-99 Version 1,4,0,8 Added hyperlink support to image fixed a bug with index.cfm, wrong file was uploaded causing an error Form field not found

4-14-99 Fixed IE 3 license key Bug fixed

4-25-99 Version 1,5,0,0 fixed a bug with the OCX it was not unloading when you close IE, fixed a bug with some accented characters, added key support for 3 keys

5-9-99

This version (1,5,0,1) allows removal of buttons and assignment of default font name and size.

5-22-99

This version (1,6,0,3) support image uploads via FTP as well as fixes a Netscape bug with hyperlinks.

5-26-99

This version (1,6,0,4) Remove extra
 at the end of of the document.

Date: 06/11/99

Feature: WDDX support, for FONT Face, Image dialog, Hyperlink dialog

Error handling first time you install the editor and the OS wants you to reboot.

Version 2,0,0,0

Date: 06/19/99

Feature: 2 Images, font size of image tag is 1, characters after image tag

Error handling first time you install the editor and the OS wants you to reboot.

Version 2,2,0,0

Reverted back to VB 5.0 run time, stop the re-boot from happening on every machine

able to insert a new hyperlink/image immediately before or after another one. Previously you could only edit it because the hyperlink/image would be selected if the cursor was left or right of the

hyperlink/image. Now the cursor must be within the hyperlink/image to edit

it.

* BUG FIX: An image at the end of a line no longer produces an extraneous

</I>, , or
 etc.

* BUG FIX: After inserting an hyperlink/image, the font attributes (color, italic, etc) will be restored to the attributes prior to the hyperlink/image. This makes typing text after inserting much easier (assuming the prior text was not another hyperlink/image, in which case the attributes will need to be manually changed).

* ENHANCEMENT: Image tags now appear as font size 1 in the editor.

Version 2,3,0,0

Here's version 2.3.0.0 of eWebEdit control.

***** FTP with WinProxy:**

A "User Name with FTP Host" check box has been added to the Select Picture File dialog. If checked, the URL of the FTP host will be appended to the FTPUsername property. If not checked, the FTPUsername property will be used as is.

By default, it is checked since this is how the control used to always work.

For example,

Checked: username = FTPUsername & "@" & FTPServer

["anonymous@ftp.ektron.com"](ftp://anonymous@ftp.ektron.com)

Unchecked: username = FTPUsername

"anonymous"

I tested with port 21 and port 8021.

I tested with WinProxy Lite 2.1g and 2.1h.

***** New Properties:**

BackColor as OLE_COLOR

ForeColor as OLE_COLOR

These assign a background color to the window and the default font color, respectively.

In VBScript, specify a color as a hexadecimal number using this syntax:

&HBBGGRR

The BB specifies the amount of blue, GG the amount of green, and RR the amount of red. Each of these fragments is a two-digit hexadecimal number from 00 to FF. The median value is 80. Thus, the following number specifies gray, which has the median amount of all three colors:

&H808080

NOTE: The background color does not affect the HTML actually emitted. It is up to the host application to set the background color attribute in the body tag.