

DS-IE URL Link Control Help

Thank you for using the Dave Software IE URL Link Control. This control is the full version of the control. You are welcome to distribute it to other people, either as the control or in your programs. When distributing the control, you must make no charge (including disk charges) for the control. The control can be downloaded from <http://www.bigfoot.com/~davesoft/dsielink.zip>

If you find any bugs in this control, or wish to make suggestions about the control, please feel free to email me at davesoft@bigfoot.com

Before reading this document, you may wish to check out the demo program included with the control. This demonstrates the effects of all the properties. If you find any errors in this documentation, please let me know and I will correct them.

Overview

This control enables you to use Internet Explorer/Netscape style URLs in your programs. There are loads of properties that you can use to customise exactly how the control behaves. The control can either launch web-pages (which was the original intention) or you can use it as an enhanced button in your programs – you can add to the “LaunchURL” event so that the control behaves just like any other VB control. Incidentally, you can set filenames and folder names in the URL property as well, however you cannot include parameters with the files.

Properties

Property	Information		
	Type	Default	Reference
Autosize	Boolean	True	Determines whether the control resizes to the caption or can be sized manually
BackColor	RGB Colour	Light Grey	Determines the colour of the control's background
Caption	String	N/A	Determines the text actually displayed in the window
Color	RGB Colour	Blue	Determines the default colour of the text of the control
DefBrowser	Enum	N/A	Returns the default browser on the system (Read-only)
ForceVisited	Boolean	False	When True, forces the VisitedColor or VisitedPicture to be displayed
Hover	Boolean	False	When True, the HoverColour or HoverPicture is used when the mouse is over the control
HoverColour	RGB Colour	Red	Determines the colour used when the mouse is over the control (See Hover)
HoverPicture	Picture	N/A	Determines the picture used when the mouse is over the control (See Hover, Style must be Graphical)
hWnd	Long	N/A	Returns the hWnd of the control (Read-only)
IESync	Enum	None	Determines if the control uses browser settings for it's visible properties. Does not apply when Style is Graphical. IE4, uses IE4 settings, NN4 uses NN4 settings and Detect uses the default browser settings on the machine. If the specified browser is not present, the default properties are used.
MousePointer	MouseCursor	dsmDefault	Determines the MousePointer used for the

			URL. dsmDefault is the “Hand” pointer
Picture	Picture	N/A	Determines the default picture when Style is Graphical
Response	Enum	OnDown	Determines if the URL is launched when the button is pressed down (OnDown) over the control or when the control is clicked (OnClick)
SaveURL	Boolean	False	Determines if the URL is marked as visited for future use (it will appear using the VisitedColor when clicked)
ShowTooltip	Boolean	True	Determines if the URL property is displayed as the ToolTip when the mouse is pointed at the control
Style	Enum	NoUnderline	NoUnderline and Underline are obvious. Focus, means Underline only when the mouse is over the control. Graphical uses the Picture properties instead of text.
URL	String	""	This determines what happened what the control is ‘clicked’
UseNavigatorColors	Boolean	False	This determines if the IESync feature will respect the value of the “Force my Default Colours” in Navigator. If set to False, then it assumes that this property is switched off.
Visible	Boolean	True	Determines if the control is visible or not
VisitedColor	RGB Colour	Magenta	Determines the colour used to display text when the URL has been clicked
VisitedPicture	Picture	N/A	Determines the picture used when the URL has been clicked

Events

Both of these event are called only when the control has been ‘clicked’ (this may be “MouseDown” if the Response property is set to OnDown or “Click” when the Response is set to OnClick)

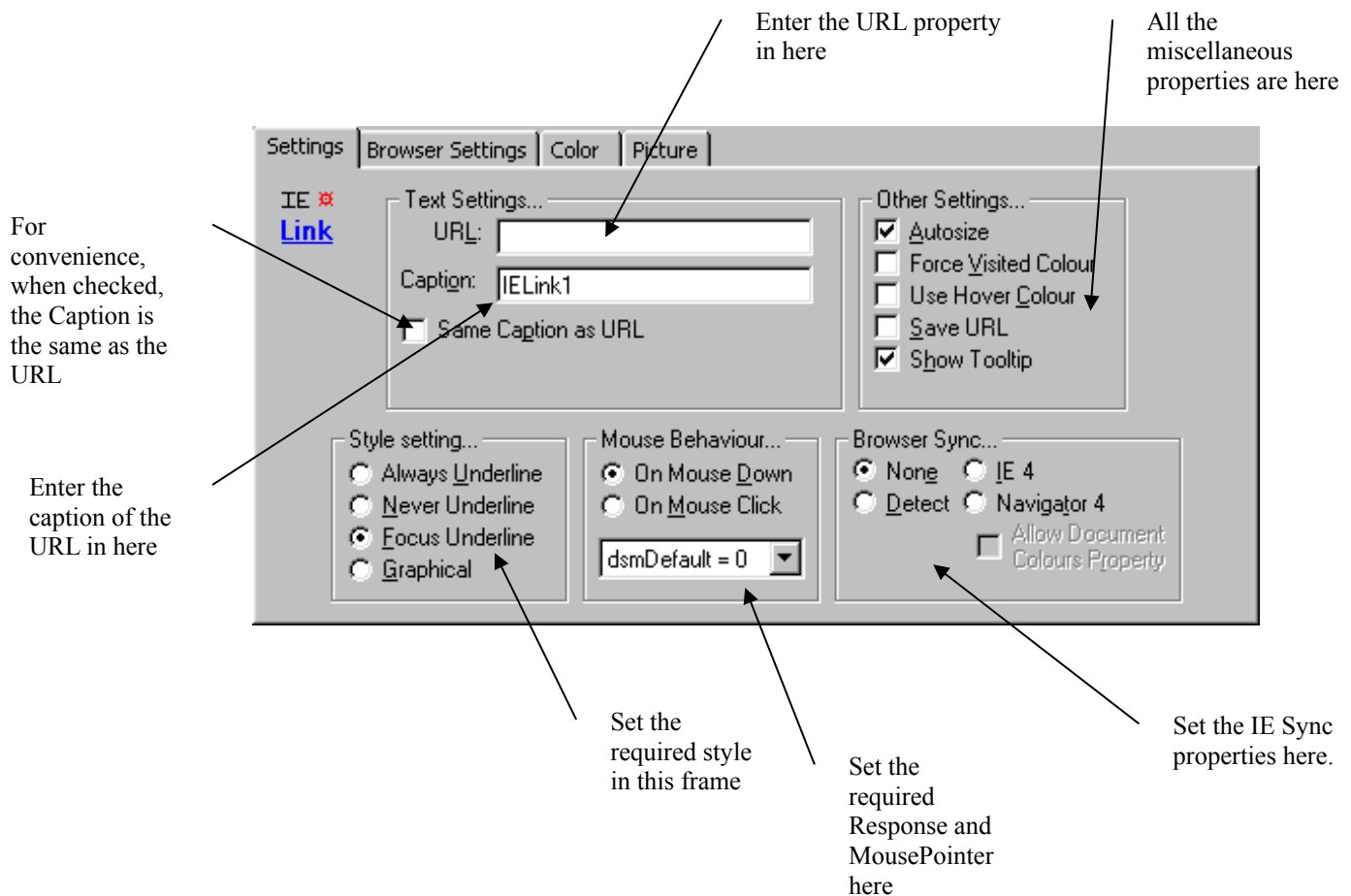
Event	Information		
	Parameter	Meaning	Reference
LaunchURL	N/A	N/A	Called when the URL property is set to "", enables you to write code for when the URL is clicked, rather than launch a web-page
URLClick	Start (Boolean)	True when the URL is about to be launched, False when it has been launched	This is called when the URL property is not set to "". It is raised twice – once before the call to ShellExecute to launch it, and once after the call to ShellExecute. Bear this in mind when writing code in this event – it is necessary to check that value of the Start property each time

If the event/property that you were looking for is not here, then it a Visual Basic standard event/property. Look in the Visual Basic help file for details on this event/property.

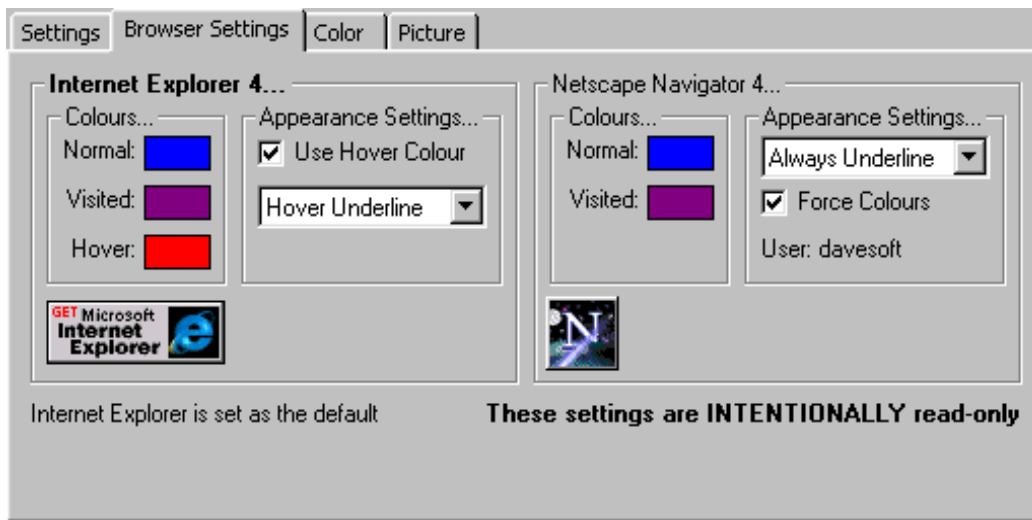
Property Pages

The control has four property pages. The first, “Settings”, is used to customise the control. The second, “Browser Settings”, displays information on the browser settings on your machine. The properties on this page are **intentionally** read-only! The last two pages are standard Visual Basic Colour and Picture property pages.

“Settings”



“Browser Settings”



This property page displays the values that properties would be set to depending on which browser you used. The frame caption in bold indicates which browser is the default. If you do not have one of the browsers installed, then you will not see the frame for that browser. This dialogue will update the properties real-time – if you change them in the browser then the property page and, more importantly, the control will update to reflect that change.