

Archer Compatible Scanner Module

This is an older version of the Archer scanner module, it works with the same protection key as the scanner module. So if the scanner module is working this module also works.

What compatibility means.

The reason why such a module is provided is that some scanner twain drivers produce incompatibility problems with the original scanner module. The original scanner module tries to put its own user interface while scanning, and suppresses the appearance of the scanner drivers user interface. It does this for several reasons.

First, usually the scanners own user interface is much harder to grasp for a first time user, and the interface changes from scanner to scanner. This interface is a general purpose interface, whereas animation scanning is done in grayscale, so much of the functions of these interfaces are not required.

Second, the scanning interface of the drivers, are generally inconvenient for making repeated multiple scans. The scanning becomes much complicated and takes longer when you do multiple scans with their interfaces.

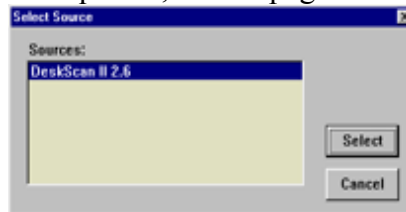
Third, the scanning dpi or resolution can be changed from frame to frame with the scanners' own user interfaces, and this would produce incompatible frames in terms of the Archer systems workings. So when, you use this module, you should be careful not to change the scanning resolution while you are scanning a sequence.

Usage instructions.

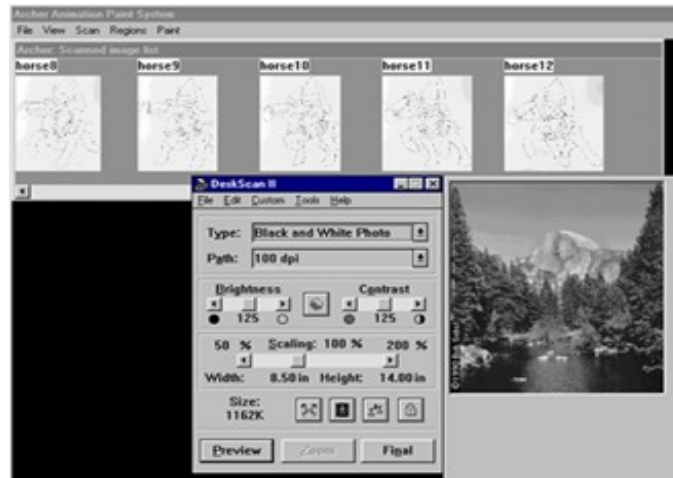
For usage of this module, first read the scanner manual. The functionality of this module is very similar to that one, except the scanning user interface is of the scanners own drivers.



To scan an animation sequence, first make sure the scanner is turned on before the computer it is working with, and then start the module. Select 'scan sequence' under the scan menu. This will pop up a dialog box, asking where to scan the sequence, and its peg bar orientation.



Then the source selection dialog will appear. If you have one scanner in the system, select the source of that scanner, or if you have more, select the required scanner source. Then the scanning process starts:



The scanner user interface appears, and each time you press the 'final', 'scan' or similar button on the scanner user interface, the image gets transferred to the module, and the sequence bar gets updated. **You can change frame number, delete frames, move frames while scanning by double clicking frames on the sequence bar. But when you do this the scanner interface is lowered, and goes to the back of the module, you should bring it to front using 'ALT-TAB'.**

Continue to scan the sequence until all frames are scanned. Then **finish the scanning process by selecting 'EXIT SCAN' from the menu** and the module understands that the scanning is finished and it closes the sequence bar window. Then you can exit the module.(Do not cancel any scan operation when using this module!)

The sequence that you scan with this module, is compatible with the original scanner module and you can open the scanned sequence in it to edit and view the sequence with a much better user interface.