



## **Welcome to ClickArt Previews!**

### **Famous Magazine Cartoons**

You've seen them in such popular publications as the New Yorker, Barron's, Omni and the Wall Street Journal. Now the most stylish and witty cartoons around can be yours! Available on diskette or CD Rom, ClickArt Famous Magazine Cartoons also includes The ClickArt Trade Secret making each image available for Macintosh in Pict, EPS (AI88) and The Print Shop Deluxe formats and for Windows and DOS in CGM, WMF, EPS (AI88), TIF, PCX and The Print Shop Deluxe formats. CD versions include BONUS color images, a collection of fonts and on-screen browser allowing you to search for images by topic or keyword.

### **Art Parts**

Welcome to the wildly exciting world of Art Parts. ClickArt is happy to have Ron and Joe (the Art Parts guys) as part of the ever expanding ClickArt family. You may find Art Parts a tad on the goofball side, but take a peek. We think you're gonna love 'em. We sure do! Art Parts gotta have 'em. Woof. Available on diskette or CD Rom (or CD Ron, sorry Joe), ClickArt Art Parts also includes The ClickArt Trade Secret making each image available for Macintosh in Pict, EPS (AI88) and The Print Shop Deluxe formats and for Windows and DOS in CGM, WMF, EPS (AI88), TIF, PCX and The Print Shop Deluxe formats. CD versions include BONUS color images, Regular Joe the font and an on-screen browser allowing you to search for images by topic or keyword.

### **About ClickArt Library Files**

The ClickArt images are stored in larger files called library files. The library files are divided into general categories; for example, you might find a Cookie image in a Treats library.

Refer to your ClickArt Visual Index to find the library with the image(s) you want to use. After you decide upon the image(s) you want, use The ClickArt Image Exporter to export the selected images to the graphic file format your software application recognizes. Refer to your application user manuals for more information on the best graphic file format to use with your software program. Software manuals also provide directions on how to place the graphic into your documents.

*If you alter a ClickArt image, be sure to save your changes under a different filename than the original ClickArt image—that way, you won't erase the original image. Also, be*

*sure to make backup copies of your ClickArt disks. That way in case anything does happen to the image you still have originals in a safe place!*

## **Importing a ClickArt Image Into Your Application**

To display a ClickArt image, a software program has to be able to bring the image into the document you are working on. This process is generally called importing. To do this, software applications have special devices, called import filters, which can read and import different file types. Not all software applications have the same import filters. That's why the ClickArt Image Exporter utility supports the most prevalent IBM PC file formats: EPS, Adobe Illustrator (AI88), EPS, CGM, PCX, TIFF, and WMF. You should refer to your application user manuals for more information on importing files.

## **Welcome to ClickArt and ClickArt Trade Secret!**

Welcome! This ClickArt portfolio is a collection of easy to use, professionally drawn images that provide high quality art work for your documents. Use ClickArt to make your documents more eye catching, easier to understand, or just plain fun to look at.

To visually impact your work, use ClickArt images in all of your documents! ClickArt images are compatible with a variety of popular software packages, including word processing, page layout, drawing, painting, illustration and presentation applications. Check your application's manuals for information on how to best use a ClickArt image.

The ClickArt Trade Secret is a family of utility programs designed to make using ClickArt easier and more versatile. The ClickArt Image Exporter is the first ClickArt Trade Secret utility. Other utility programs will be available in future ClickArt packages.

## **ClickArt Image Exporter**

### **About The ClickArt Image Exporter**

The ClickArt Trade Secret in the ClickArt package you just purchased contains a graphic conversion utility called the ClickArt Image Exporter. The ClickArt Image Exporter utility allows you to easily convert your ClickArt images into the most popular Windows and DOS graphic file formats, including EPS, Adobe Illustrator (AI88), EPS, CGM, PCX, TIFF, and WMF file formats. This allows you to use your ClickArt images with virtually any graphics-capable software program. You can also use your ClickArt images directly from within Print Shop Deluxe.

## **There Are Three Ways You Can Use The ClickArt Image Exporter**

### **From Your Hard Disk**

You can copy the ClickArt files and The ClickArt Image Exporter to your hard disk, then run The ClickArt Image Exporter and store the converted files on your hard disk or on another floppy disk.

### **From Your CD-ROM Drive**

If you purchased ClickArt on a CD-ROM disc, you can run The ClickArt Image Exporter directly from your CD-ROM disc. From the CD-ROM disc you can store the converted images on your hard disk or on another floppy disk. You must store the converted files either on a hard disk or floppy disk because you cannot write information to a CD-ROM disc.

The steps that follow show you how to copy ClickArt files, launch the ClickArt Image Exporter, open a library file, and export a ClickArt image to the file format you need.

## **How To Make The ClickArt Image Exporter Fit Your Needs**

As described above, there are several different ways to use the ClickArt Image Exporter. You can use your ClickArt software from a floppy disk, a hard disk, or a CD-ROM disc. While all these options work equally well, they each have a different impact on your computer.

Some users are concerned that copying all of the ClickArt images to their hard disk at once will take up unnecessary space. The best option we can recommend to those users is to run the ClickArt Image Exporter from either a floppy disk or a CD-ROM disc. That way you can export only the images you need at one time. This will save you space on your hard disk.

Other users are not concerned about using hard disk space. These are people that prefer to have the ClickArt Image Exporter™ run a little faster. For those folks we recommend copying all of their ClickArt disks onto their hard disks. Remember though that the trade off for increased performance is that it will take up more space on your hard disk.

Detailed explanations of both approaches are in this manual.

Try to find the approach that best fits your needs.

## **Using the ClickArt Image Exporter**

You can run the ClickArt Image Exporter from the ClickArt floppy disk or from your hard disk, if you have made a copy of ClickArt Image Exporter on your hard disk. When you export an image to a graphic file, you will need to store the image either on your hard disk or on another floppy disk.

To Start the ClickArt Image Exporter In A DOS System:

From a Hard Disk

1. At the DOS prompt (type CD\ and you will see C:\>), type CD\CLICKART and press ENTER.  
  
If the ClickArt files are stored in another directory, type CD\ followed by the name of the directory and press ENTER.
2. Type EXPORT and press ENTER.

### From a CD-ROM Drive

1. At the DOS prompt (type CD\ and you will see C:\>), type D: (D: is generally reserved for CD-ROM drives) and press ENTER. If your CD-ROM drive is not D:, type the correct drive letter followed by a colon and press ENTER.
2. Type CD D:\CAEXPORT\ and press ENTER
3. Type EXPORT and press ENTER.

### To Start the ClickArt Image Exporter™ In A Windows System:

1. Start Windows.
2. Double click on the Main icon and then double click on the File Manager icon.
3. At the top of the File Manager, click the drive icon where the ClickArt disk is located (either a floppy drive, your hard disk, or CD-ROM drive). If necessary, change to the ClickArt directory where the images are stored—you will need to do this after you have copied the ClickArt files to your hard disk.
4. When the list of files on the disk appears in the File Manager window, double-click the EXPORT.EXE file. If you are using a CD-ROM disc be sure to change the directory to D:\CAEXPORT\ first.

Depending on your Windows configuration, you may need to exit the Exporter. Press Ctrl/Alt/Del and ENTER. Then exit Windows and use the Exporter in DOS.

### Here's How To Use the ClickArt Image Exporter

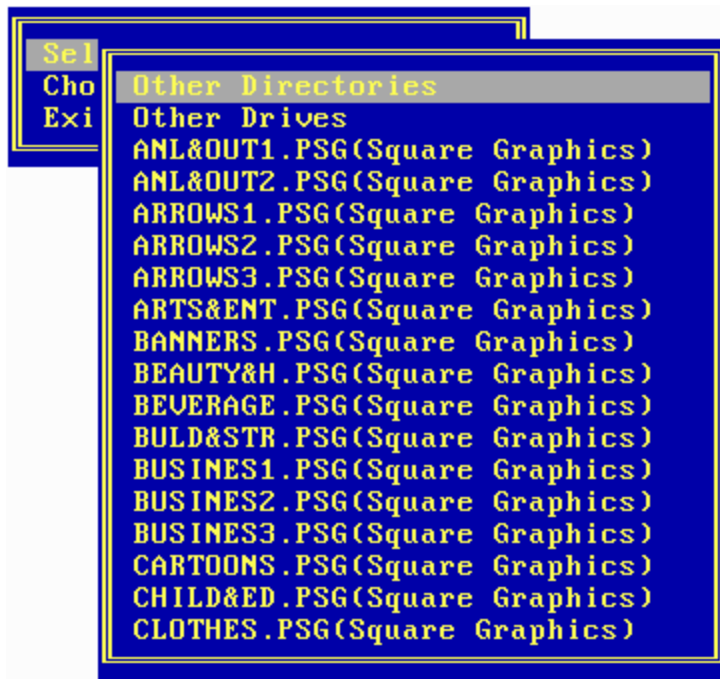
1. After the ClickArt Image Exporter start-up screen appears and you have read the information on the screen, press any key to continue.

The ClickArt Image Exporter menu appears with Select a Graphics Library highlighted. You can press the Up or Down arrow key to make other selections.



2. With Select a Graphics Library highlighted, press ENTER.

The list of library files on the disk appears.



If you have copied the ClickArt library files into a directory different from where your ClickArt Image Exporter is located, you will have to locate the library files.

To do this press the Up or Down arrow key to select Other Directories or Other Drives.

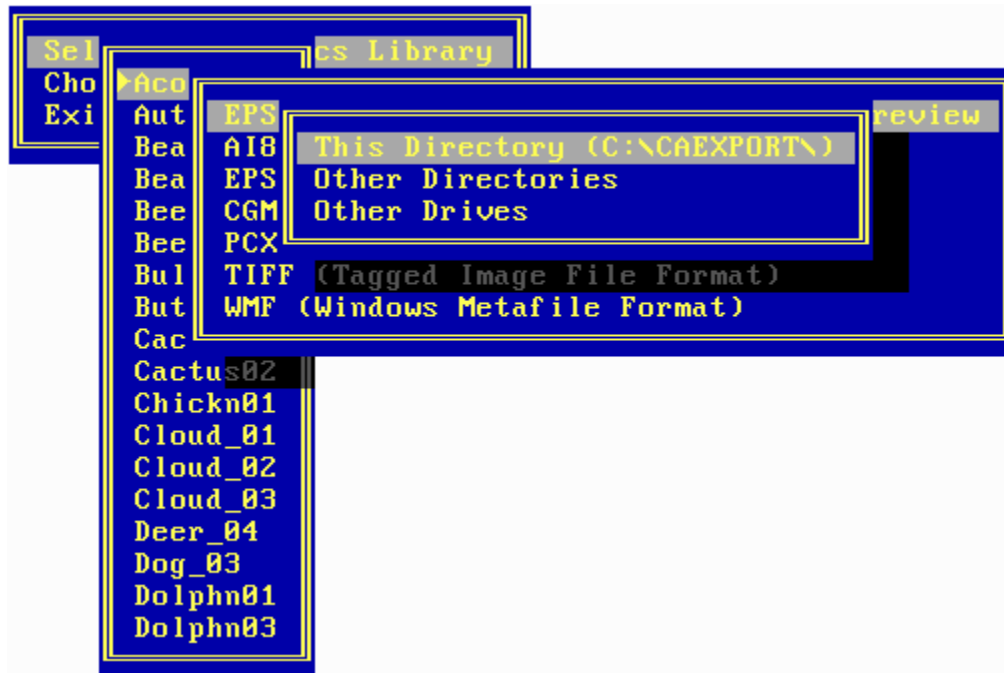
3. Press the Up or Down arrow key to select a library and press ENTER.

A list of images in the library appears.

4. Press the Up or Down arrow key to select an image and press ENTER.

To select multiple images, highlight each image and press the Spacebar; a triangle appears next to the image to show it is selected. To select all the images in the library, hold down the Shift key and press the Spacebar. To deselect an image, highlight the image and press the Spacebar; the triangle disappears. To return to the previous menu press the Escape key.

5. Press the Up or Down arrow key to select the graphic file format you want to export the image to and press ENTER.



6. Press the Up or Down arrow key to select where you want the export files to be stored.

You can select:

This Directory: to store the exported files in the current directory.

You will only be able to use this option if you have copied the ClickArt Image Exporter to your hard disk. (If you have Print Shop installed anywhere on your computer, the Exporter will automatically show the default as the Print Shop directory.)

Other Directories or Other Drives: to store the exported files in another location.

You will need to select these options if you are running the Exporter from a floppy disk or from a CD-ROM.

7. To exit the program, press ESC, then choose Exit to DOS (or Windows) from the main menu.

NOTE: When converting images to PCX format, the ClickArt Image Exporter will ask you what size you would like the final image to be. For the highest quality, we recommend converting to Large. The Custom Size is measured in pixels.

## **Using ClickArt with Print Shop Deluxe**

If you are going to use a ClickArt image with Print Shop Deluxe, you can use the images directly in the ClickArt library files. After you start Print Shop Deluxe, you can direct the program to open a ClickArt library and then use any of the images. For information on using alternate libraries, refer to your Print Shop Deluxe documentation.



## End User License Agreement For ClickArt® Famous Magazine Cartoons

United States copyright law and international copyright treaties protect these ClickArt Images and Fonts ("The Images and Fonts"). T/Maker Company ("T/Maker") depended on the availability of this protection when it decided to spend the time and money required to produce The Images and Fonts. Nevertheless, T/Maker realizes that you have licensed this copy of The Images and Fonts so that you could copy The Images and Fonts in their present or a modified form and incorporate them into another work.

All Famous Magazine Cartoons artwork belongs to Sandhill Arts and its licensing artists. This license entitles you, without additional payment or permission, to use the artwork only in: personal correspondence, slide shows, charts and diagrams, printed forms, sales brochures, in-house newsletters, annual reports, direct-mail advertising of less than 100,000 pieces, and periodical publications with circulation under 30,000 readers. You may personalize the captions accompanying the artwork by changing the name of a character, company or location, provided that no such change (a) consists of any illegal, immoral, sexually offensive or slanderous material, (b) suggests the endorsement of any product, service or political or other cause or (c) suggests a point of view that is in conflict with any point of view originally expressed by the artist. This license does NOT include the right to alter any artwork or reproduce it in: periodical, billboard or television advertising; commercially distributed books or periodicals, pamphlets or merchandise; direct-mail advertising of 100,000 or more pieces; or periodical publications with circulation of 30,000 or more readers. If you wish to make use of the artwork outside the permitted scope of this license, you should address a written request to Sandhill Arts, P.O. Box 60490, Palo Alto, CA 94306, USA. ALL COPYRIGHT NOTICES MUST BE PRINTED WITH ANY REPRODUCTION OF THE ARTWORK. You may not make any copies of any portion of The Images and Fonts for distribution or resale. Except as specifically stated above, you may not copy, modify, or distribute The Images and Fonts. T/Maker Company grants you this license for a single CPU (central processing unit) only. This software may not be loaded onto a Local Area Network unless a license has been purchased for each CPU on the Network.

Please call or write T/Maker for more details regarding 5 or 10 Packs, Network Licenses, or Site Licenses. T/Maker Sales may be reached at 415/962-0195, 9 a.m. to 5 p.m., Pacific Time.

### LIMITED WARRANTY

T/Maker warrants to you, the original Licensee, that The Images and Fonts are substantially in conformance with the visual index/manual for a period of 90 days from the date of purchase. If a disk is defective, T/Maker Company will replace the disk at no charge to you, if you return the disk to T/Maker at the address below with proof of purchase within 90 days after you purchased it. Your sole and exclusive remedy, and T/Maker's sole and exclusive liability, will be either replacement of the disk or a refund of the purchase price in accordance with this limited warranty.

THE ABOVE WARRANTY IS THE ONLY WARRANTY OR REPRESENTATION OF ANY KIND WITH RESPECT TO THE IMAGES and FONTS MADE BY T/MAKER

OR ANYONE ELSE INVOLVED IN THE CREATION, PRODUCTION, DELIVERY, OR LICENSING OF THE IMAGES and FONTS. FURTHERMORE, ANY IMPLIED WARRANTIES WITH RESPECT TO THE IMAGES and FONTS OR DISKS, INCLUDING IMPLIED WARRANTIES OF MERCHANTABILITY, FITNESS FOR A PARTICULAR PURPOSE, AND NONINFRINGEMENT OF THIRD PARTY RIGHTS, ARE SPECIFICALLY DISCLAIMED.

NEITHER T/MAKER NOR ANYONE ELSE INVOLVED IN THE CREATION, PRODUCTION, DELIVERY, OR LICENSING OF THE IMAGES and FONTS MAKES ANY WARRANTY OR REPRESENTATION OF ANY KIND, EXPRESS OR IMPLIED, WITH RESPECT TO THE IMAGES and FONTS OR THEIR QUALITY, RELIABILITY, OR PERFORMANCE, OR THEIR MERCHANTABILITY OR FITNESS FOR ANY PARTICULAR PURPOSES. THE IMAGES and FONTS ARE LICENSED "AS IS." YOU ASSUME THE ENTIRE RISK AS TO THE QUALITY, RELIABILITY, AND PERFORMANCE OF THE IMAGES and FONTS. IF THE IMAGES and FONTS PROVE DEFECTIVE, YOU, AND NOT T/MAKER OR ANYONE ELSE INVOLVED IN THE CREATION, PRODUCTION, DELIVERY, OR LICENSING OF THE IMAGES and FONTS, MUST ASSUME THE ENTIRE COST OF ALL NECESSARY CORRECTIONS.

#### DISCLAIMER OF DAMAGES

IN NO EVENT WILL T/MAKER OR ANYONE ELSE INVOLVED IN THE CREATION, PRODUCTION, DELIVERY, OR LICENSING OF THE IMAGES and FONTS BE LIABLE TO YOU FOR ANY CONSEQUENTIAL, SPECIAL, INCIDENTAL, DIRECT, OR INDIRECT DAMAGES OF ANY KIND ARISING OUT OF THE USE OF THE IMAGES and FONTS OR ANY DEFECT IN THE IMAGES and FONTS, EVEN IF T/MAKER OR ANYONE ELSE INVOLVED IN THE CREATION, PRODUCTION, DELIVERY, OR LICENSING OF THE IMAGES and FONTS HAS BEEN ADVISED OF THE POSSIBILITY OF SUCH DAMAGES.

This notice will be construed, interpreted, and governed by the laws of the state of California as applied to transactions taking place entirely within California between California residents. Should you have any questions concerning this Agreement, please contact in writing T/Maker Company, 1390 Villa Street, Mountain View, CA 94041, USA, 415/962-0195, Fax: 415/962-0201.

#### TRADEMARKS

ClickArt and T/Maker are registered trademarks of T/Maker Company.

ClickArt Famous Magazine Cartoons and The ClickArt Trade Secret are trademarks of T/Maker Company.