

User's Guide

QuickSpell

For Palm OS

 **MobileSystems®**

© Copyright Mobile Systems Inc, 2000-2002

All rights reserved. This manual and the programs referred to herein are copyrighted works of Mobile Systems, Inc.

The information in this document is a subject to change without notice.

Mobile Systems, Inc. accepts no liability for loss or consequential loss from misuse or any defect or failure of the programs howsoever arising.

© 2000-2002 Mobile Systems Inc. QuickSpell and QuickSpell logo are trademarks or registered trademarks of Mobile Systems, Inc. in the U.S. and/or other countries. All rights reserved.

3Com, the 3Com logo, Palm Computing and HotSync are registered trademarks, and Palm III, Palm IIIx, Palm V, the Palm III logo, the Palm IIIx logo, the Palm V logo and the Palm Computing platform logo are trademarks of Palm Computing, Inc, 3Com Corporation or its subsidiaries.

Acrobat and PDF are trademarks of Adobe. All other brands and product names may be trademarks or registered trademarks of their respective holders.

<http://www.mobi-systems.com/>

Contents

CONTENTS	3
LICENSE AGREEMENT	4
LICENSE AND DISTRIBUTION.....	4
RESTRICTIONS	4
NO WARRANTIES	4
LIMITATION OF LIABILITY.....	4
GETTING STARTED	6
WELCOME TO QUICKSPELL.....	6
HOW TO ORDER QUICKSPELL.....	6
SYSTEM REQUIREMENTS.....	7
INSTALLATION.....	7
<i>Installing QuickSpell Using A Windows Computer</i>	<i>7</i>
<i>Installing QuickSpell Using A Macintosh.....</i>	<i>7</i>
<i>Uninstalling QuickSpell.....</i>	<i>8</i>
REGISTRATION	9
<i>Why Register.....</i>	<i>9</i>
<i>How To Register</i>	<i>9</i>
<i>Customer IDs and Unlock Keys.....</i>	<i>9</i>
<i>Online Registration of Products</i>	<i>10</i>
CONTROLS AND FEATURES.....	12
WHAT QUICKSPELL CAN DO FOR YOU	12
GET QUICKSPELL READY TO WORK	12
HOW TO START THE QUICKSPELL RANGE	12
WORD EDIT FIELD.....	13
SUGGESTION LIST.....	13
<i>Close QuickSpell Range</i>	<i>13</i>
<i>Replace Misspelled Word</i>	<i>13</i>
<i>Ignore Spelling Suggestion</i>	<i>13</i>
<i>Fix Spelling Manually.....</i>	<i>14</i>
<i>Add Word To Vocabulary</i>	<i>14</i>
<i>Delete Word From Vocabulary.....</i>	<i>14</i>
<i>Change Suggestion list</i>	<i>14</i>
<i>Change Options</i>	<i>14</i>
DEFAULT VOCABULARY DATABASE	14
<i>Change the Active Vocabulary</i>	<i>14</i>
ENABLE/DISABLE QUICKSPELL	16
<i>Setting Your Preferences</i>	<i>16</i>
ADDITIONAL VOCABULARIES.....	18
<i>Installing additional Vocabulary.....</i>	<i>18</i>
<i>Adding vocabulary database to QuickSpell.....</i>	<i>18</i>

License Agreement

*** Please read this entire agreement ***

This End-User License Agreement (the "Agreement") is a legal agreement between you ("Licensee"), the end-user, and Mobile Systems Inc. ("Mobile Systems") for the use of the QuickSpell software product ("Software"). By using this Software or any part of it, you are agreeing to be bound by the terms of this Agreement. If you do not agree to the terms of this Agreement do not install this Software.

License and Distribution

The evaluation copy of this Software is free of charge for unlimited period of time. You must pay the license fee and register your copy to continue to use the Software and remove the nag screen. Until you purchase and register the product you will not be able to access the additional database provided by Mobile Systems Inc.

The evaluation copy is fully functional except for the nag screen that slows the start up the more times you start the program. You're allowed to make as many copies of this evaluation version (in UNMODIFIED form) as you wish to distribute.

Restrictions

You may not nor permit anyone else to de-compile, reverse engineer, or disassemble, modify, or create derivative works based on the SOFTWARE or the documentation in whole or in part. You may not use the Software for any commercial purpose or public display, performance, sale or rental. You may not use the Software to perform any unauthorized transfer of information (e.g. transfer of files in violation of a copyright) or for any illegal purpose.

No Warranties

This software and any related documentation is provided "as is" without warranty of any kind.

Mobile Systems Inc. specifically disclaims all warranties, expressed or implied, including but not limited to implied warranties of fitness for any particular purpose and of merchantability

Limitation of Liability

In no event will Mobile Systems Inc. be liable to you for any damages, including but not limited to any loss of data, lost profits, lost savings, commercial damage or

other incidental or consequential damages arising out of the use or inability to use this program directly or indirectly, or for any claim by any other party.

Getting Started

Welcome to QuickSpell

QuickSpell is a spell checking program for Palm OS. The application detects misspelled words and suggests correct spelling alternatives. Just select the misspelled word from the offered list and proceed with your work.

QuickSpell is a HackMaster extension, which allows you to activate it and check your spelling form within other Palm applications without interrupting your current work.

QuickSpell supports variety of vocabularies and languages, compatible with QuickCheck and QuickWrite as well. The distribution packet includes a default vocabulary for the selected language, which comprises most frequently used words and word forms. Three additional rich English vocabularies are available, which are suitable from beginner English learners to English language professionals, working with most sophisticated lexical structures.



QuickSpell is distributed in 5 different language versions – *English, German, French, Spanish, Italian and Dutch*.

How To Order QuickSpell

QuickSpell is a downloadable shareware product available for free evaluation or registration (for only \$14.95) at www.mobi-systems.com



System Requirements

Palm OS 3.1 or higher.

Installation

Installing QuickSpell Using A Windows Computer

1. Download QuickSpell (.zip) into the Add-on folder in your Palm Desktop directory on your computer and expand the .zip file.
2. Double-click the Palm Desktop icon on your desktop.
3. Click Install. (Tip: You can also access the Install Tool dialog by clicking on the .prc file).
4. From the User pop-up menu, select your user name.
5. Click Add.
6. When the Open dialog box appears, select QuickSpell.prc, QuickSpellHack.prc and the .pdb file containing the vocabulary database. Click Open.

QuickSpell will only work if you have a HackMaster installed on your Palm. In our distribution pack we have included an alternative - X-Master.prc. To download and buy HackMaster, go to www.daggerware.com

7. Click Done to close the Install Tool window.
8. Perform a HotSync operation to install QuickSpell.

Note: If you are using QuickWrite 1.38 or lower, please update this program.

Installing QuickSpell Using A Macintosh

1. Download QuickSpell (.sit) into the Add-on folder in your Palm Desktop

- directory on your computer and expand the .sit file.
2. Double-click the HotSync Manager icon in the Palm folder.
 3. From the HotSync menu, choose Install Handheld Files.
 4. From the User pop-up menu, select your user name.
 5. Click Add to List.
 6. Select the Add-on folder from the popup menu.
 7. Select QuickSpell.prc and QuickSpellHack.prc and the .pdb file and the .pdb file containing the vocabulary database.

QuickSpell will only work if you have a HackMaster installed on your Palm. In our distribution pack we have included an alternative - X-Master.prc. To download and buy HackMaster, go to www.daggerware.com

8. Click Add File to add QuickSpell to the Install Handheld Files List.
9. Close the Install Handheld Files window.
10. Perform a HotSync operation to install QuickSpell on your Palm.

NB! If you are using QuickWrite 1.38 or lower, please update this program.

Uninstalling QuickSpell

1. Start your HackMaster/X-Master and disable QuickSpell Hack.
2. From your Palm's main Application Launcher, tap the Menu button and select Delete from the drop down list.
3. Tap QuickSpell and then tap Delete.
4. Tap Yes to confirm you wish to remove the program. QuickSpell should no longer appear on your screen.

Note: You will have to remove some of the database manually. Vocabularies have been designed for use with several applications and therefore are not deleted automatically. Do not delete vocabularies you wish to use with another application (QuickWrite or QuickCheck).



Registration

Why Register

Registering your QuickSpell will remove the annoying nag screen from your device and guarantee you preferential technical support.

How To Register

The shareware version of QuickSpell is completely functional. Registering QuickSpell will remove the annoying nag screen, which will appear more frequently and stay longer each time you use the application.

To register your copy of QuickSpell, order the product at <http://www.mobi-systems.com>. Use the online registration form, link to which you will find only in your purchase confirmation message, to obtain the Unlock key for your product

Customer IDs and Unlock Keys

The Customer ID is 4x4 symbols sequence, used for registration key generation. Customer ID, as well as Unlock keys, are product and device dependent so a key generated for a particular device will not work on any other palm device. To obtain the Customer ID for your copy of QuickSpell, start the program and tap **Menu> Options> Registration** of the program and you will find it on the registration screen. Product registration screen will appear, in which you will find the required ID.



The Unlock Key is a combination of 4-4 letters and numbers (for example: **34C5-7B9E**), which you will receive after you submit your Customer ID either through the online registration form or by e-mail to support@mobi-systems.com. Use the product registration form above to input the Unlock key and complete your Registration. To enter your Unlock key:

1. Go to Menu|Options|**Registration**.
2. Type in your Unlock Key in the space provided in your QuickSpell Registration screen.
3. Tap on **OK** to continue or **Cancel** to abort the entry.

Alternatively, follow the Registration screen instructions that appear upon starting

QuickWrite - i.e. tap on **Register** and proceed to **QuickSpell Registration** screen to type in your Unlock Key.

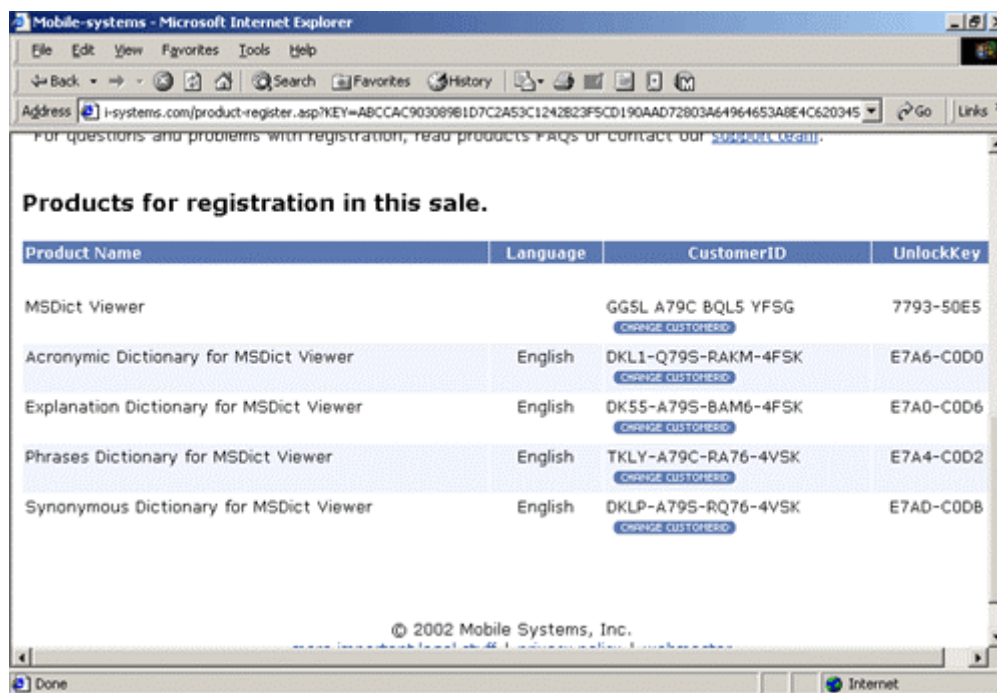
Online Registration of Products

After the successful completion of a purchase, you will receive a confirmation message for your order. In this message you will find links to online registration form for your purchased products. Input the Customer ID for the particular product in the destine field and click SUBMIT CUSTOMER ID button. Your Unlock key will be e-mailed to you.

The screenshot shows a web browser window titled "Mobile-systems - Microsoft Internet Explorer". The address bar displays "i-systems.com/product-register.asp?KEY=ABCCAC903089B1D7C2A53C1242823F5CD190AAD72803A64964653A8E4C620345". The page header includes the "MobileSystems" logo and navigation links: "News and Press", "Reseller Area", "Partners", "Contact Us", "Home", "Products", "Tech Support", "Shopping Cart", and "About Us". A search bar is present with the text "search" and a "Go" button. The main content area is titled "Product Registration Page" and displays the following information: Partner: Handango, Sales ID: 02A59E66-36C8-4218-9B00-8715E4013294, Sales Date: 2002-09-11, and Customer Name: Patrick Duong. Below this, there is a form with a "Product Name" field containing "MSDict Viewer" and a "CustomerID" field with four empty boxes separated by hyphens. A "SUBMIT CUSTOMERID" button is next to the CustomerID field. A note below the form explains the Customer ID: "What is Customer ID and where to find it? The Customer ID is not your order ID and not your name or device owner. Customer ID is specific for your copy of each product and is device dependent. It is a 18 symbols sequence like this GLL-ANDA-PQ55-YVTY. To obtain the Customer ID, install your purchased product and start it from the main applications launcher. Tap 'Enter Key' or 'Register' according to the application. The registration form will appear, in which you will find the required ID. Alternatively, you".

Note: You will not be able to receive more than two registration keys for a single product so be careful when sharing registration keys with friends and relatives.

You can access the Unlock keys for your registered products at any time through the online registration form and also obtain second key in cases of PDA change.



Keep your purchase confirmation message since the link to online registration of your products is available only there. In case you loose your message, visit <http://www.mobi-systems.com/lost-registration.asp> and fill the form provided and your products purchase confirmation message will be resend to you.

Controls and Features

What QuickSpell Can Do For You

QuickSpell checks the spelling of words and word forms in all standard fields in all applications, detects misspelled words and word forms and gives suggestions for correct spelling.

Get QuickSpell ready to work

To be able to use QuickSpell, initially you have to activate the QuickSpell hack. To do this:

1. Go to HackMaster, X-Master or alternative hack manager from the main application launcher on your Palm

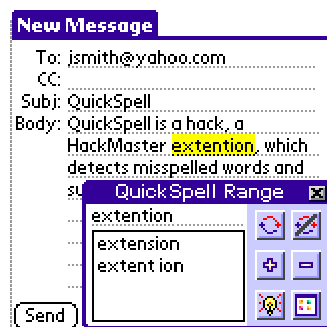


2. Select QuickSpell Hack and place a “check” in the box for the hack.

Now you are ready to check your spelling.

How To Start The QuickSpell Range

To start checking the spellings double tap the ABC corner of the graffiti area. QuickSpell's Range will appear:



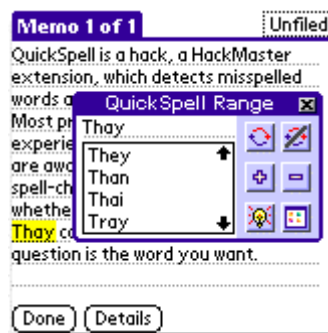
Note! Use your stylus to move QuickSpell Range within the screen and view unchecked text.

Word Edit Field

Word Edit Field is the field where the possibly misspelled word or word form is displayed while QuickSpell is in progress.

Suggestion List



Suggestion List comprises of a number of suggestions – words and word forms spelled correctly – from which to choose a replacement for the misspelled word. Use the arrows to scroll up and down through the suggestion list.




Close QuickSpell Range

To exit QuickSpell Range tap the Close button .


Replace Misspelled Word

In the Suggestion List select the word, which you wish to replace the misspelled one with. The word selected will automatically appear in the Word Edit field. Tap Change  to confirm the change or Ignore  to continue checking the rest of the text.


Ignore Spelling Suggestion

If you decide not to use any of the words suggested or if the word assumed misspelled is actually correct, tap the Ignore button . QuickSpell will then ignore the suggestions and continue checking the rest of the text.


Fix Spelling Manually

If no appropriate suggestion appears in the Suggestion List you can correct the spelling mistake manually. Tap word in the Word Edit field and fix the spelling mistakes. You can still use the Suggestion button  – sometimes if word has more than 2 wrong letters, the proper suggestion may not appear at the first try. On the other hand, if you made the proper corrections, the word will appear first in the Suggestion List, thus proving new spelling is accurate.


Add Word To Vocabulary

Vocabulary databases are customizable. To add a word to the vocabulary, make sure it first appears in the Word Edit List and then tap the Add button .


Delete Word From Vocabulary

If you wish to remove a particular word or word form from the vocabulary database, make sure it first appears in the Word Edit List and then tap the Remove button .

Change Suggestion list

To have a new Suggestion list displayed for the next possible misspelled word, which appears in the Word Edit field, tap the Suggestion button .

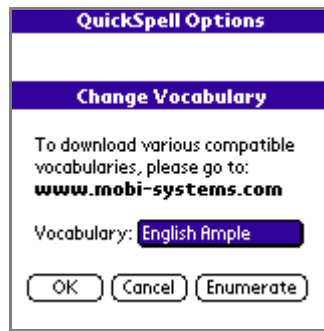
Change Options

To change options while QuickSpell is in progress (for example to change the language of the vocabulary database), tap the Options button , select the desired option and follow the instructions in the popup window.

Default Vocabulary Database

Change the Active Vocabulary

1. Start QuickSpell Settings by tapping over the QuickSpell icon in your applications list.
2. Tap “Change Vocabulary”.
3. From the popup list select the vocabulary you wish to use.
4. Tap OK to continue or Cancel to return to the initial settings.



The **Enumerate** button gives you the chance to search for any moved or post-installed vocabulary databases.

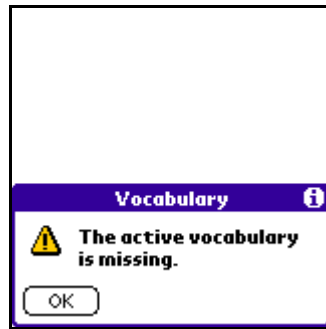
You are given the opportunity to specify which location to be searched for vocabularies. You will get the following screen:



- ◆ **RAM** – The search is enforced only within the internal memory of your Palm device.
- ◆ **Dir** – This will search in the “\PALM\Programs\TETools” directory of all installed memory cards. Placing the vocabularies in this directory is recommended.
- ◆ **Everywhere** – Searches all directories of all additionally installed memory cards. This operation usually takes several minutes if used with a large memory card.

Note: If you tap the “Dir” button, this also includes a RAM search. If you tap the “Everywhere” button, the procedure includes RAM search and “\PALM\Programs\TETools” directory search.

In case the program does not find any vocabularies, you will get the following message and you will need to check if you have installed the necessary .pdb files. If you try to activate a vocabulary database that you have moved or deleted or in case of unplugged memory card used for vocabulary storage, you will get the following *alert*:



Enable/Disable QuickSpell

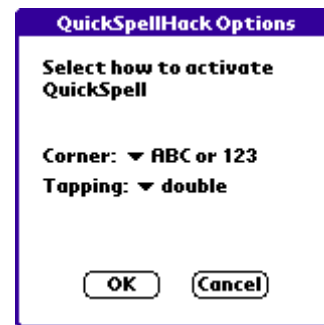
You can enable/disable QuickSpell. To do so:
 Tap the Menu button on your device. From the Applications list select HackMaster.
 Tap the QuickSpell check box.



NB! If other keyboard hacks are being used (QuickWrite Hack for example) and when activating hacks within the HackMaster, make sure QuickSpell Hack is the last you activate.

Setting Your Preferences

Go to X-Master or HackMaster, select QuickSpell Hack and tap Configure. In the **QuickSpellHack Options** screen select from the dropdown lists an option as to when you wish QuickSpell to be activated.
 Options available for starting QuickSpell are: single or double tapping in the ABC/123/either corner of the Graffiti area.



Additional Vocabularies

Mobile Systems' vocabulary databases have been developed to meet the requirements of a wide range of users. Their entries have been selected and compiled after thorough analyses of various texts and speech patterns. Vocabularies are empowered by a superb compression algorithm that allows fast search in low space.

For each language version of QuickSpell three additional vocabularies are available as follows – Vocabulary Ample, Vocabulary Extended and Vocabulary Gold, ordered by the number of entries they comprise. All vocabulary databases are available for download, free evaluation and order at <http://www-mobi-systems.com>.

Installing additional Vocabulary

1. Download the vocabulary and extract the distribution packet in selected folder on your PC.
2. To install vocabulary database on your device, double-click the .pdb file to add it to your Palm desktop install tool. For example, if you wish to install English Gold vocabulary, double-click EnglishGold.pdb.
3. Perform a HotSync operation to load the vocabulary on your PDA.

Hint: .pdb files are the actual vocabulary databases used on your Palm device.

Adding vocabulary database to QuickSpell

After you have downloaded and installed a vocabulary, do the following to be add it to QuickSpell and use it:

1. Open QuickSpell from the main applications launcher or through QuickSpell Hack.
2. Tap [Change Vocabulary](#).
3. Tap Enumerate.