



NOD32 Antivirus System version 2

Installation Guide

V1_0606/2003

Copyright © 2003 ESET, LLC

Table of contents

1. Introduction.....	3
2. Installing NOD32 v2	4
2.1 Brand new installation.....	4
2.1.1 NOD32 Installation modes.....	5
2.1.1.1 The Typical Installation mode.....	6
2.1.1.2 The Advanced and Expert installation modes.....	10
2.2 Reinstallation of NOD32 v2 over the previous version (v1).....	18
3. Technical Support.....	18

1. Introduction

NOD32, v2, the fourth generation of Eset's award winning antivirus system has been released on June 6, 2003.

This Installation Guide describes how to install NOD32 v2.

Brand new installation and installation on a system already using version 1 are described. Finally, upgrade of a network installation using the copy of the updates files (also referred to as 'mirror' is discussed).

Many significant changes and improvements were implemented in v2 as presented in the following list.

New features:

- Improved GUI
- Centralized module management from within the Control Center
- New advanced heuristics used in mail scanners (IMON, EMON) capable of detecting even the unknown viruses, trojans and worms (NOD32 was the first to have detected the fast-spreading Win32/Bugbear.B using the extended heuristics)
- Mail scanners (IMON, EMON) work fully automatically with no need of manual configuration
- Mail scanners now supports archive scanning
- Supports update through HTTP protocol
- Scheduler/Planner
- Log Management
- Supports Terminal Services and XP Fast User switching
- Ready to support Remote Administration using the Management Console

2. Installing NOD32 v2

2.1 Brand new installation

Save and close all documents and close all running applications before installation. Make sure there are at least 30MB of free disk space on the disk where you plan to install NOD32.

Note: If any other Antivirus program is running on the computer, it is strongly recommended to uninstall it to prevent serious conflicts.

If you are installing from CD-ROM, run SETUP.EXE, located in the root directory.

To install from the Internet, you will either need to download the trial version or a commercial version. To download the commercial version (and to receive all the updates and upgrades of the program) you will need to get a Username and Password from the vendor. These can be received after purchase of the NOD32 Antivirus System. It can be purchased at:

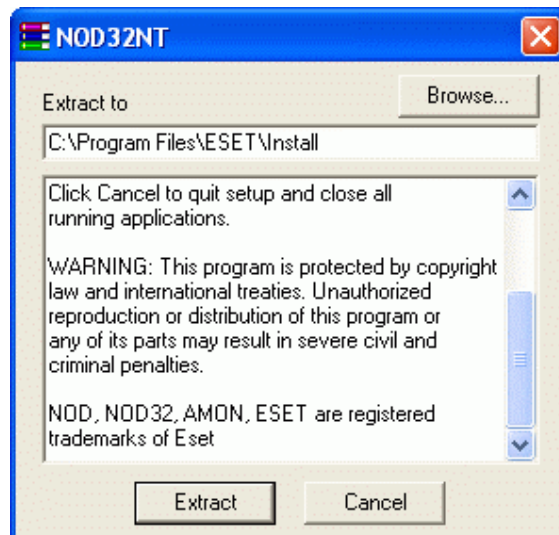
<http://www.nod32.com/purchase/purchase.htm>

Download the proper version of NOD32 system from the vendor website:

<http://www.nod32.com/download/download.htm>

NOTE: The administrator version is intended for creating a mirror updates for more computers in the network and requires a special username/ password. If NOD32 should run just on one computer and no mirror is needed, please download the standard version.

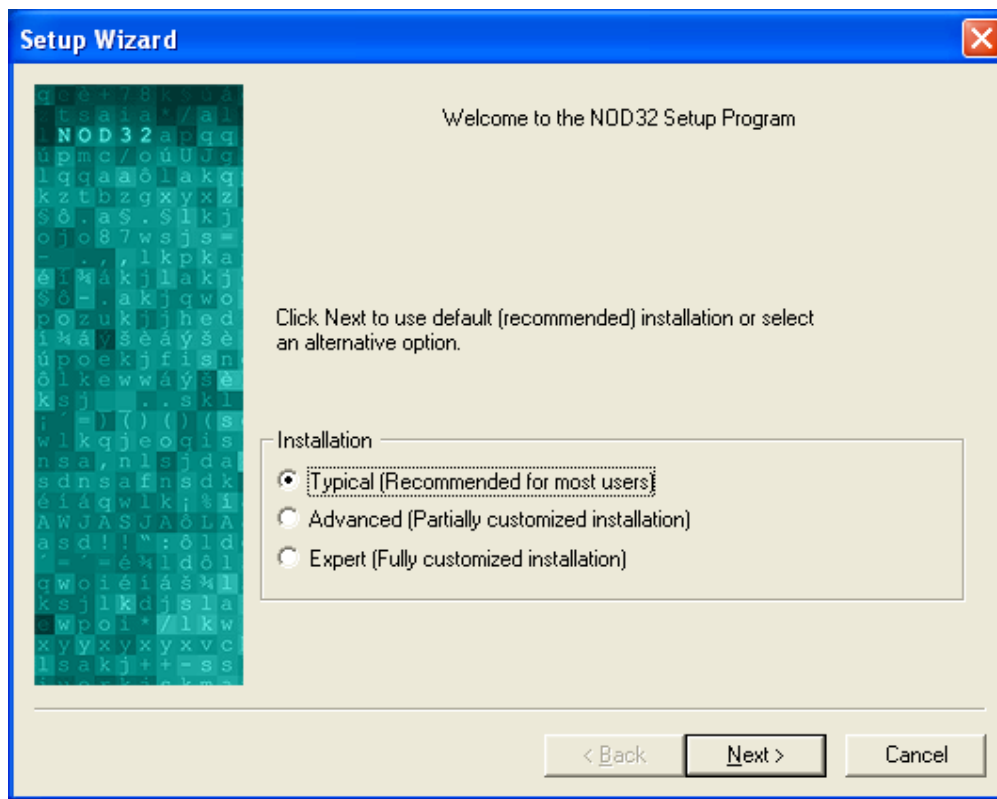
double-click the NOD32 self-extracting archive downloaded from Eset's website.



In either case, you will be prompted to specify the **installation directory**. Keeping the suggested directory is recommended. The installation file will run automatically after it has been unpacked (by clicking on **Extract**). The installation procedure continues in the following section.

2.1.1. NOD32 Installation modes

After extracting the file downloaded from the web the following window offers various installation modes:



Select the **installation mode**. Most of the features can also be modified after completion of the installation process. Click **Next** after selecting the installation mode.

As written in the above screenshot, the **Typical installation mode** is recommended for most users. It is described in the following section

The Advanced and Expert installation modes offer a more detailed installation and are described in the next section.

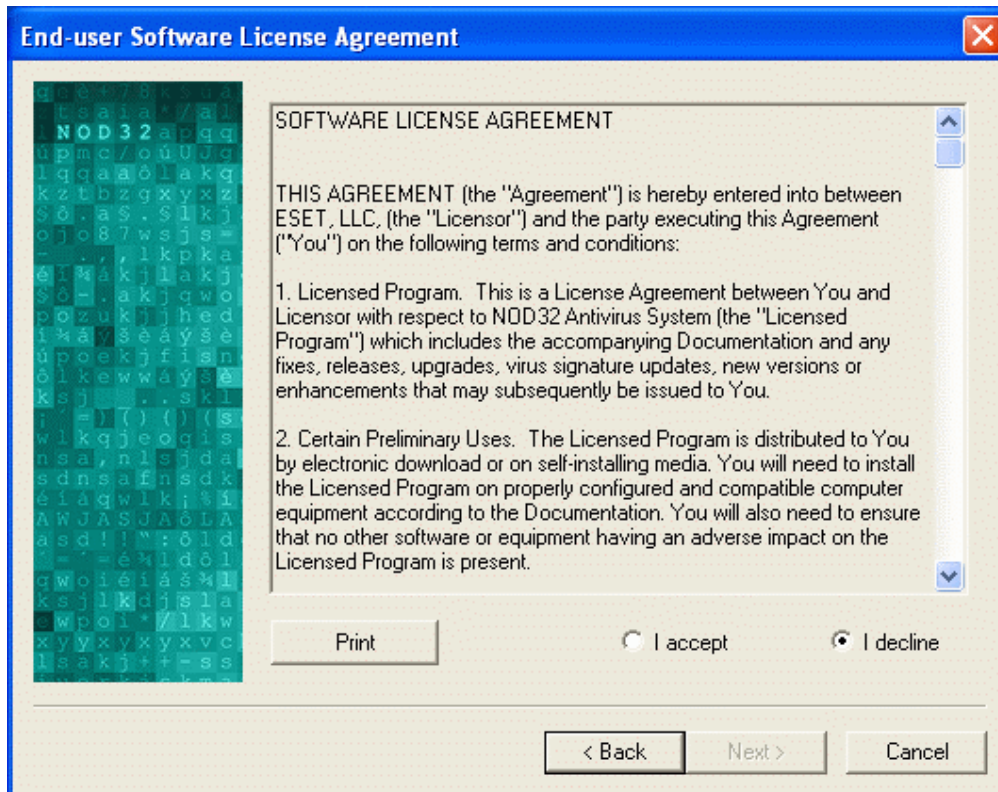
The following table shows what can be configured in the particular installation modes:

Option	Typical	Advanced	Expert
NOD 32 destination folder		X	X
Silent Mode, password protect settings		X	X
GUI type, Splash screen			X
Send warnings by email or messenger			X
Update-server, username and Password	X	X	X
Internet connection and proxy settings	X	X	X
Auto-update configuration		X	X
Launch resident protection on startup	X	X	X
Place icon on desktop		X	X
Enable Explorer context-menu scanning		X	X
Enable IMON and EMON, modification of infected mail, and appending notices to email		X	X

NOTE: Most of these settings (and many others) can be (re-)configured after NOD32 is installed, no matter which installation type is chosen. Exceptions are: "Enable Explorer context-menu scanning" and "Place icon on desktop".

2.1.1.1 The Typical Installation mode

It is recommended for the vast majority of the users. The following window appears as first after selecting the Typical (and any other) installation mode:



Please read through the End-User **Software License Agreement** and click the desired option. Click **Next**.

Automatic Internet update of NOD32 system will only work if valid Username and Password are entered in the fields below. Username and Password is assigned by the vendor or distributor.

Server:

Username: Password:

To enter Username and Password parameters later (not recommended), select the checkbox below.

☐ Set update parameters later

< Back Next > Cancel

The window above lists the factory **default update server**. We recommended using the default server unless there is a good reason change it. Enter the username and password provided by the vendor or distributor into the fields provided for this purpose.

Important note: A valid username and password is required to receive Internet updates and upgrades. The username and password can also be entered or modified after installation in the **Update** section of the Control Center.

Select options corresponding to the type of your Internet connection. If you use a proxy server and do not know the connection username and password, contact your system administrator or provider.

☐ use dial-up (modem) Internet connection

Proxy server

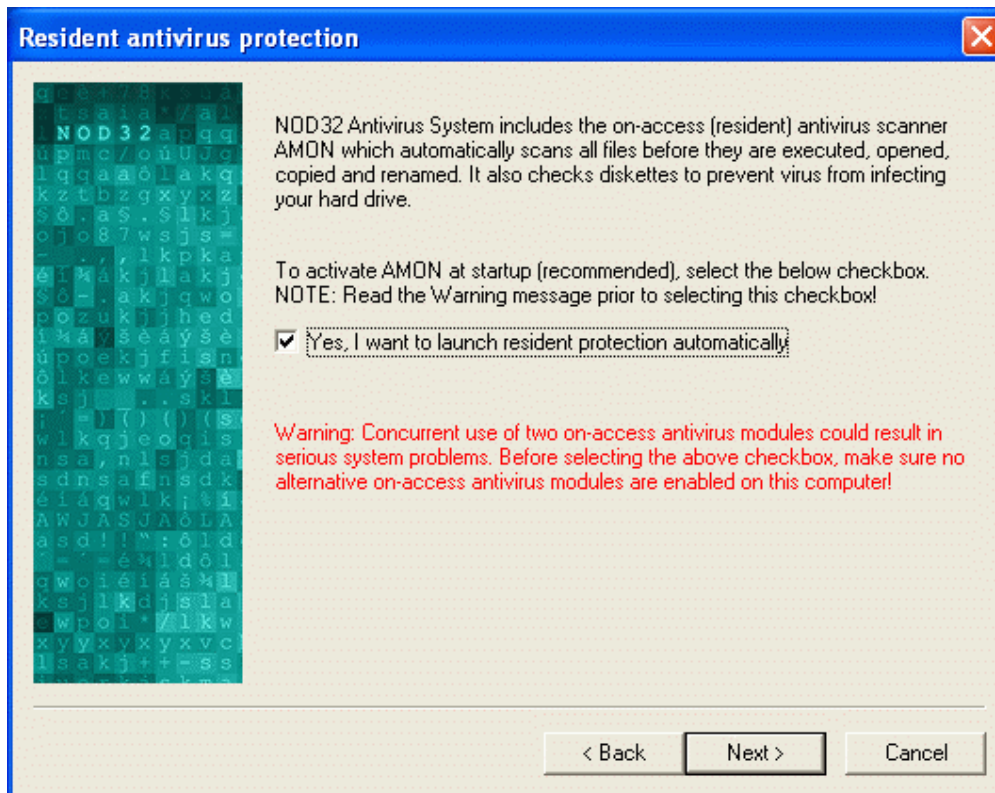
☒ I don't know whether proxy server is used. I want to use the same settings as those used by Internet Explorer

☐ I don't use proxy server

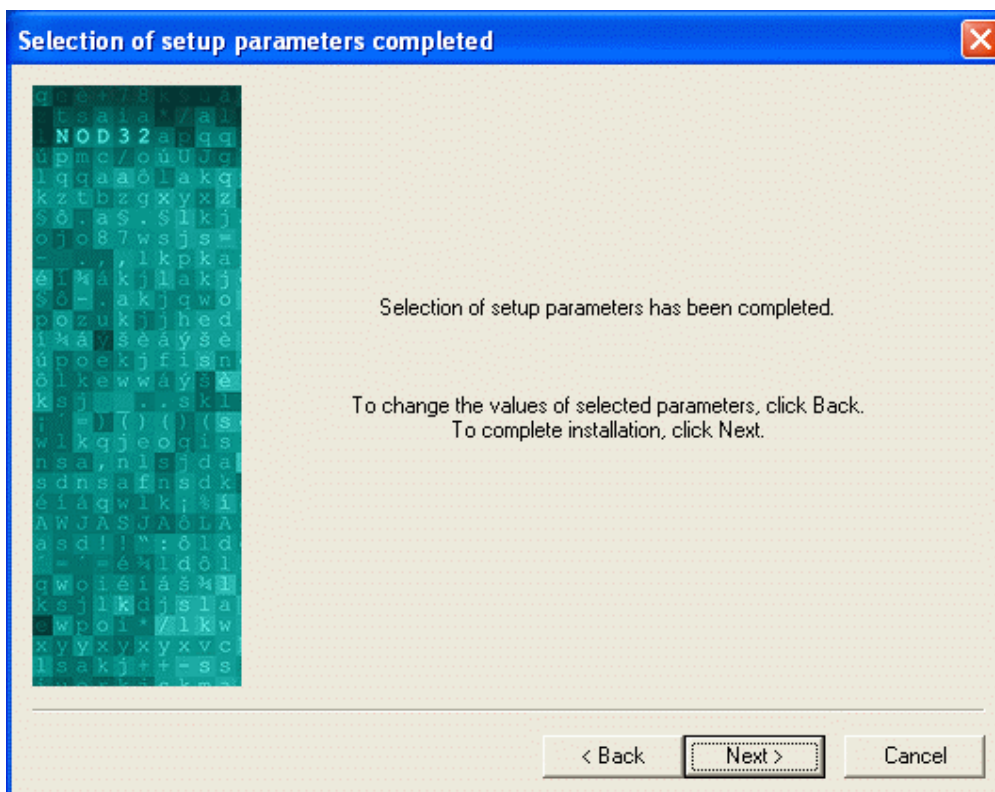
☐ I use proxy server

< Back Next > Cancel

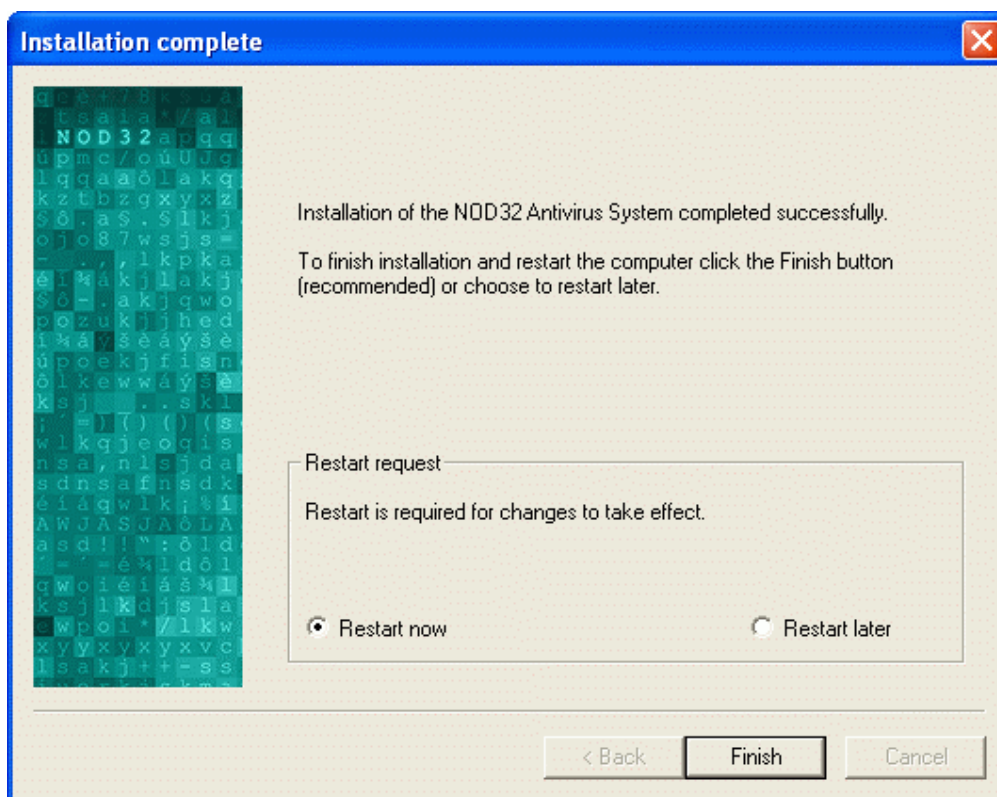
Specify your Internet connection details in this window. If unsure about proxy server details, leave the default selection. If your Internet Explorer works properly, the default selection should be the correct option.



Resident protection. It is vitally important to use the resident (on-access) antiviral module - AMON. AMON should be launched automatically at system startup. Make sure no other antiviral resident modules are installed on your computer to avoid compatibility problems. Special caution is recommended on Windows NT systems.



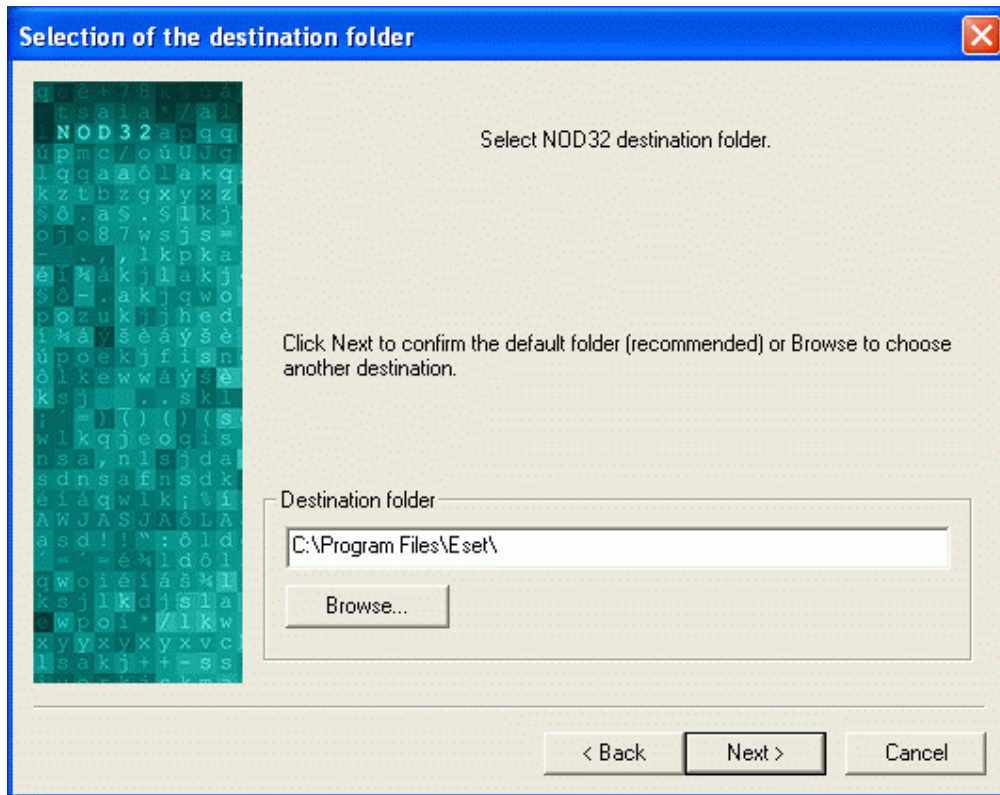
Click **Next** to complete installation of the NOD32 Antivirus System.



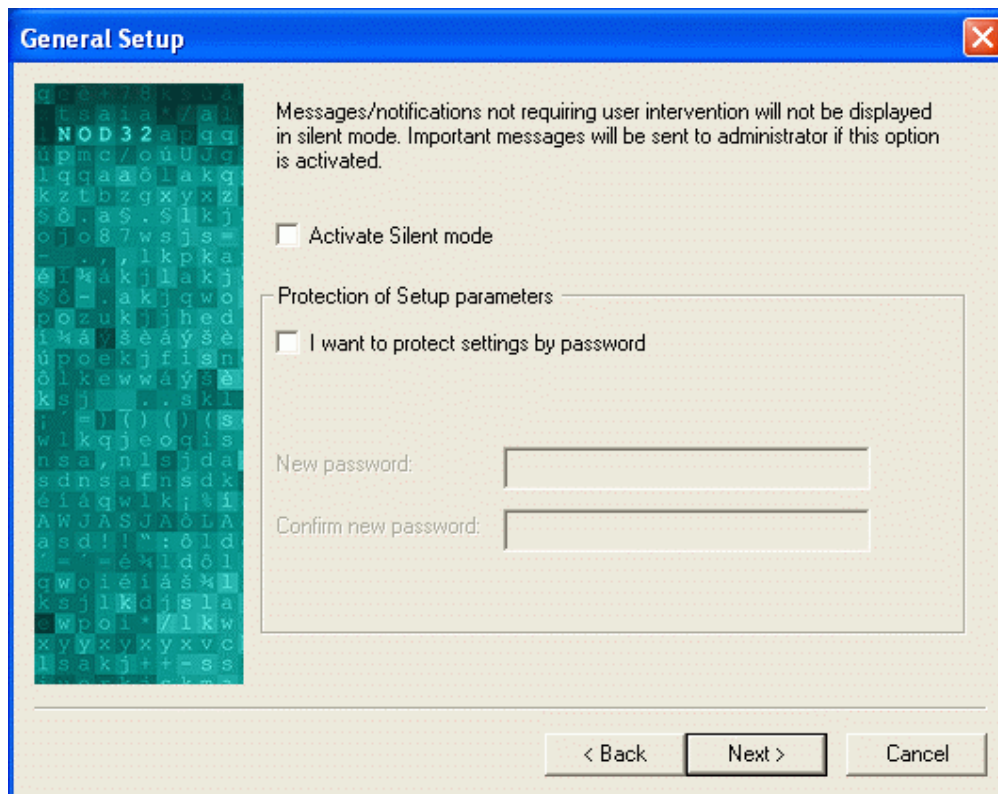
Select **Restart now** and **Finish** to restart your computer and activate the antiviral protection.

2.1.1.2 The Advanced and Expert installation modes

The Advanced and Expert installation modes offer a more specific installation. In this section are described just the setup windows that are included in the Advanced and Expert installation modes, but are not included in the Typical mode. The order of the setup windows can be viewed in the Table included in the “NOD32 Installation modes” section. The following window appears after accepting the license agreement in the Advanced and Expert modes:



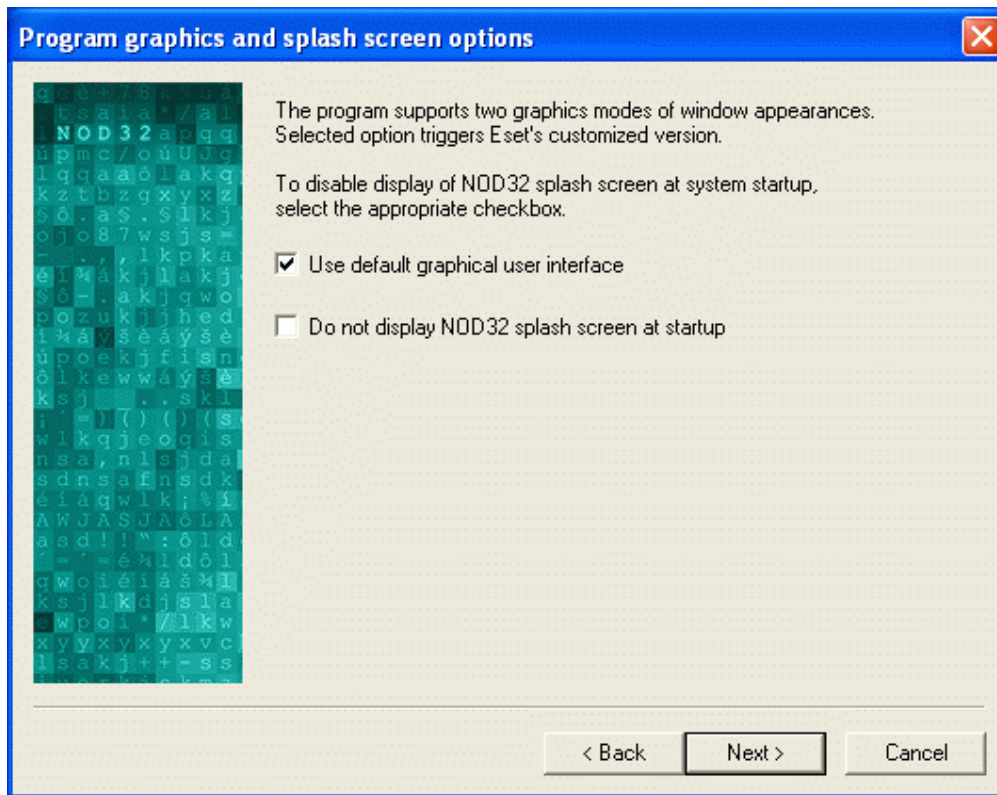
Click **Next** to install NOD32 to its **target directory** (recommended the default), or change it.



Activate Silent mode – Selection of this check box will minimize communication between the NOD32 system and the user. Only NOD32's dialog windows requiring client input will be displayed. If the option to send event messages is turned on, messages will be sent to the administrator or selected user(s). Virus warning messages will, however, be displayed even when silent mode is on.

Protection of Setup parameters – If you wish to protect selected settings, check the second check box. To avoid mistakes when entering the password, it is entered twice.

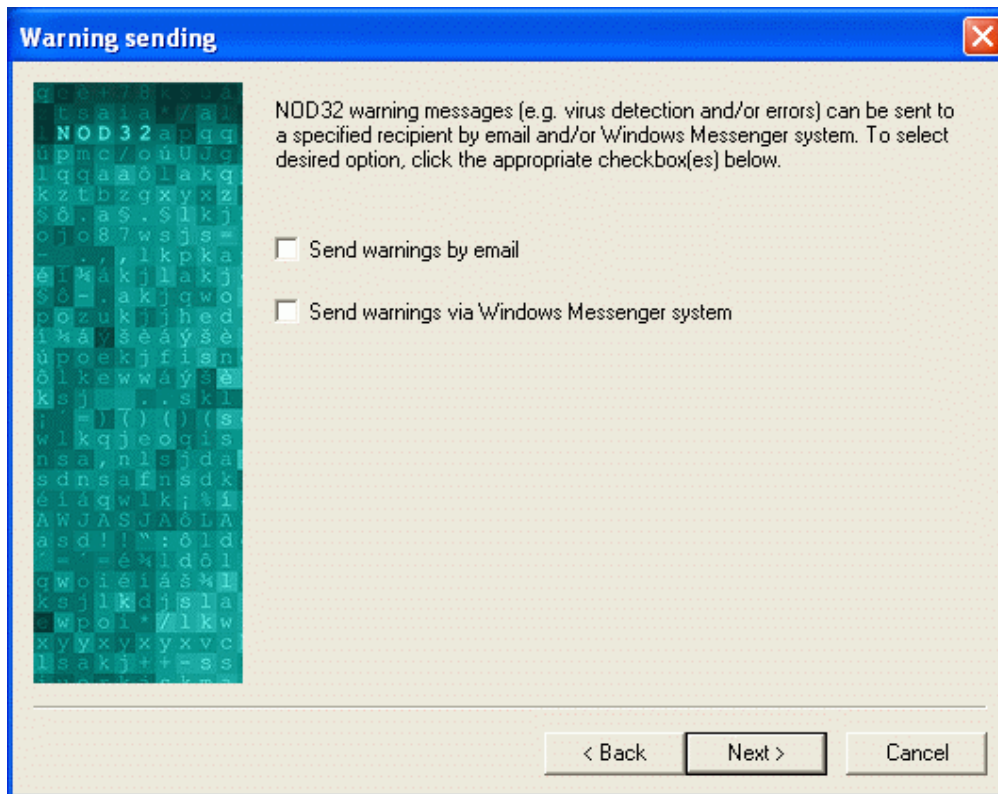
NOTE: Values of both these parameters can be modified after installation via the NOD32 **Control Center**, in the **General** tab of the NOD32 System Setup window.



Use default graphical user interface – Selection of this check box will allow for a customized program interface. If this check box is not selected, the standard Microsoft Windows® interface will be used instead.

Do not display NOD32 splash screen at startup – Select this check box to disable display of the NOD32 splash screen at startup.

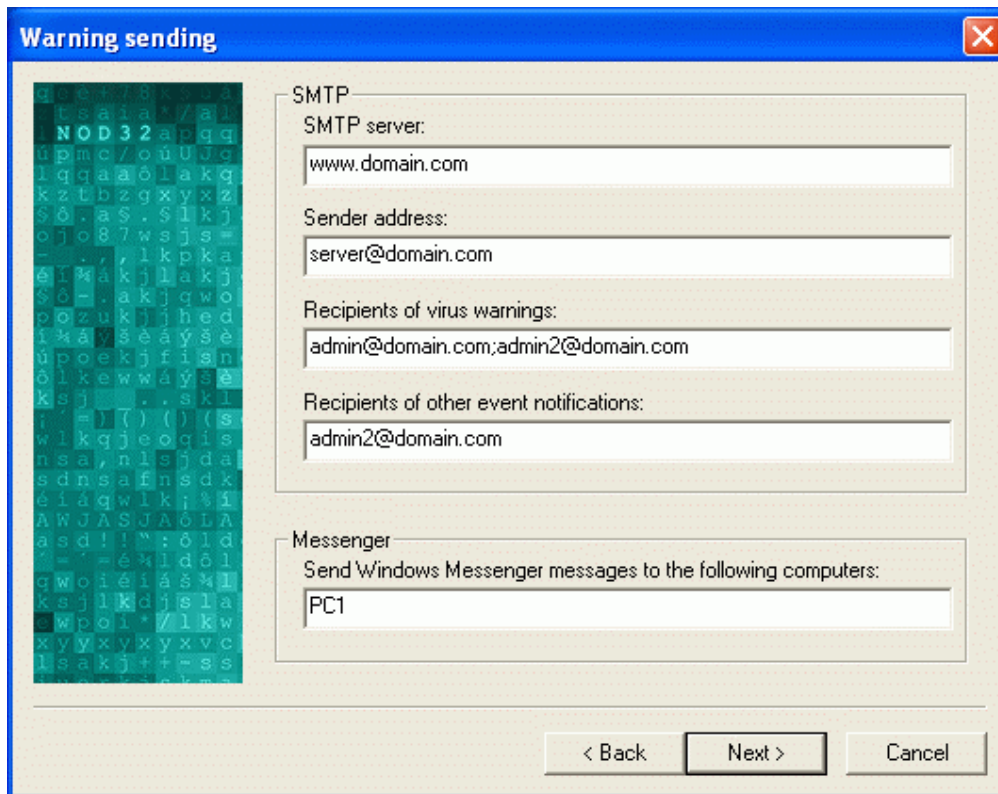
NOTE: This window is only available in **Expert** installation mode. Both of these parameters can be modified after installation via the **Control Center**, in the **NOD32 System Setup** section.



Send warnings by e-mail – All notifications and warnings will be sent to the e-mail addresses entered in the following fields (see below).

Send warnings via Windows Messenger system – All notifications and warnings will be sent to recipients via the local network - Windows® Messenger system.

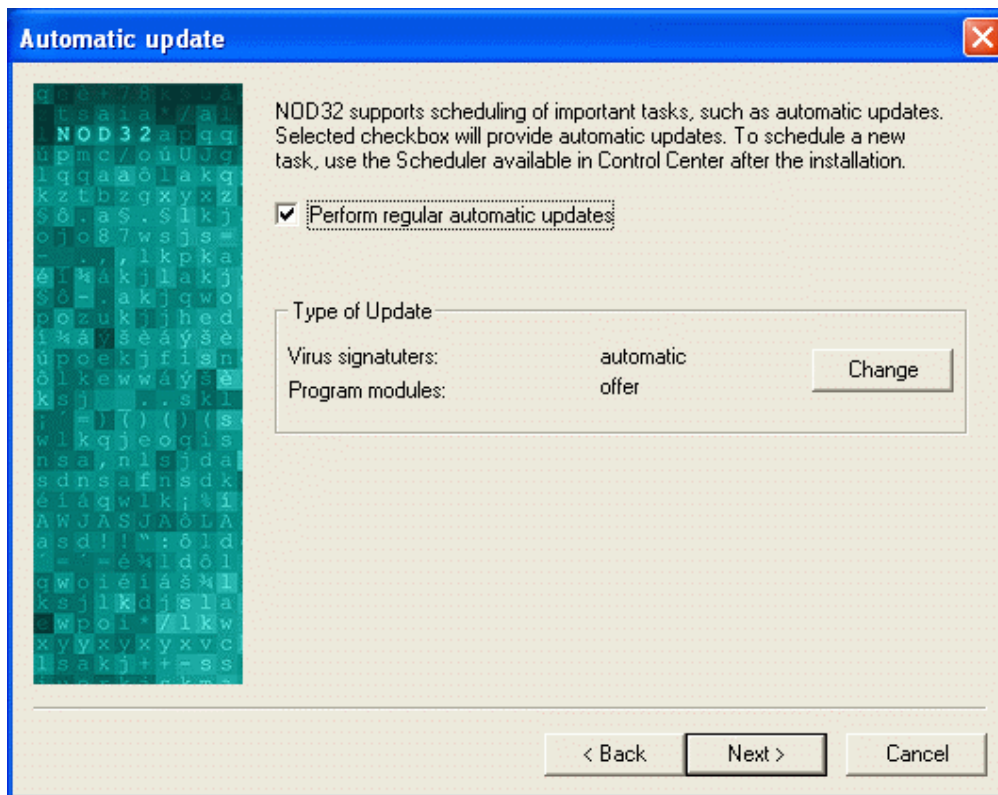
NOTE: This window and the following one are only available in ***Expert*** installation mode. Both of these parameters can be modified after installation via the ***Control Center***, in the ***NOD32 System Setup*** section.



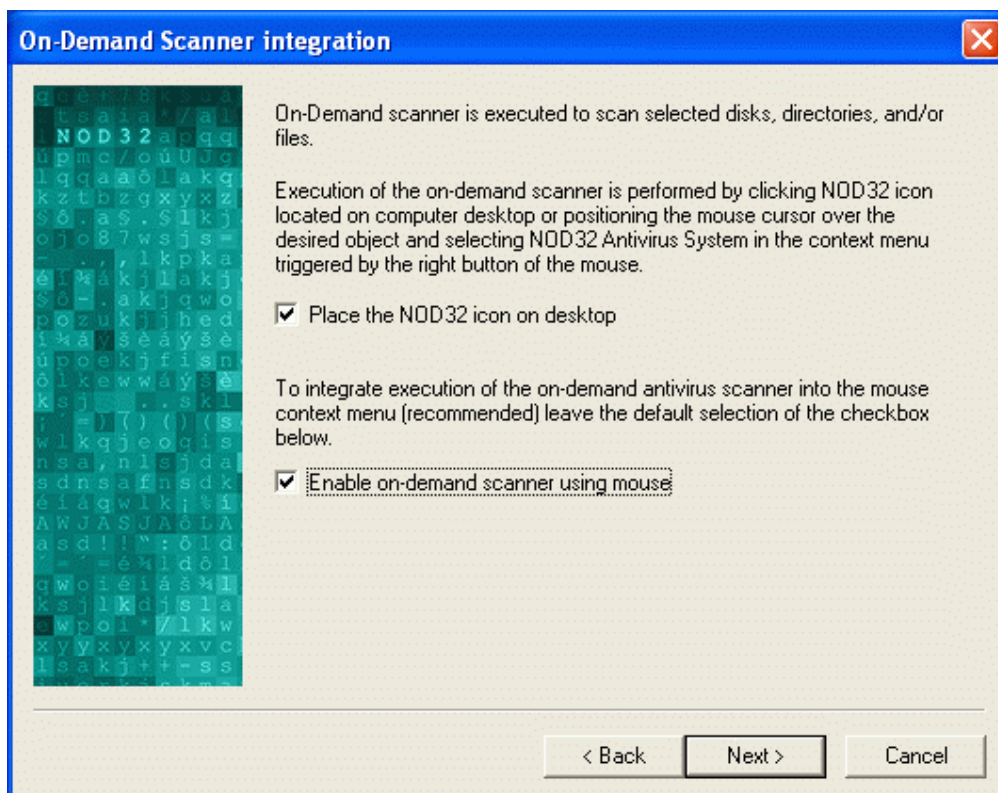
The image shows a Windows-style dialog box titled "Warning sending" with a blue title bar and a close button (X) in the top right corner. On the left side of the dialog is a green rectangular area containing a grid of small, colorful characters, including the text "NOD32". The main area of the dialog is light beige and contains several input fields grouped under labels. The "SMTP" section includes fields for "SMTP server:" (containing "www.domain.com"), "Sender address:" (containing "server@domain.com"), "Recipients of virus warnings:" (containing "admin@domain.com;admin2@domain.com"), and "Recipients of other event notifications:" (containing "admin2@domain.com"). The "Messenger" section includes a label "Send Windows Messenger messages to the following computers:" followed by a text box containing "PC1". At the bottom right of the dialog are three buttons: "< Back", "Next >", and "Cancel".

This window allows further configuration of communication between NOD32 and the user.

- **SMTP server** – Email server to be used to send the warning/notification email messages.
- **Sender address** – Enter the address that will appear as the sender address.
- **Virus warning addressee** – Enter the email addresses of recipients who will receive virus warning messages, separated by semi-colons (;).
- **Addressee of other notification messages** – Enter the email addresses of recipients who will receive notification messages (e.g. update information), separated by semi-colons (;).
- **Messenger** – Enter the names of the network computers that will receive the messages from NOD32 system. (NOTE: Enter the names without backslashes (\\); you may enter several computers separated by spaces.)



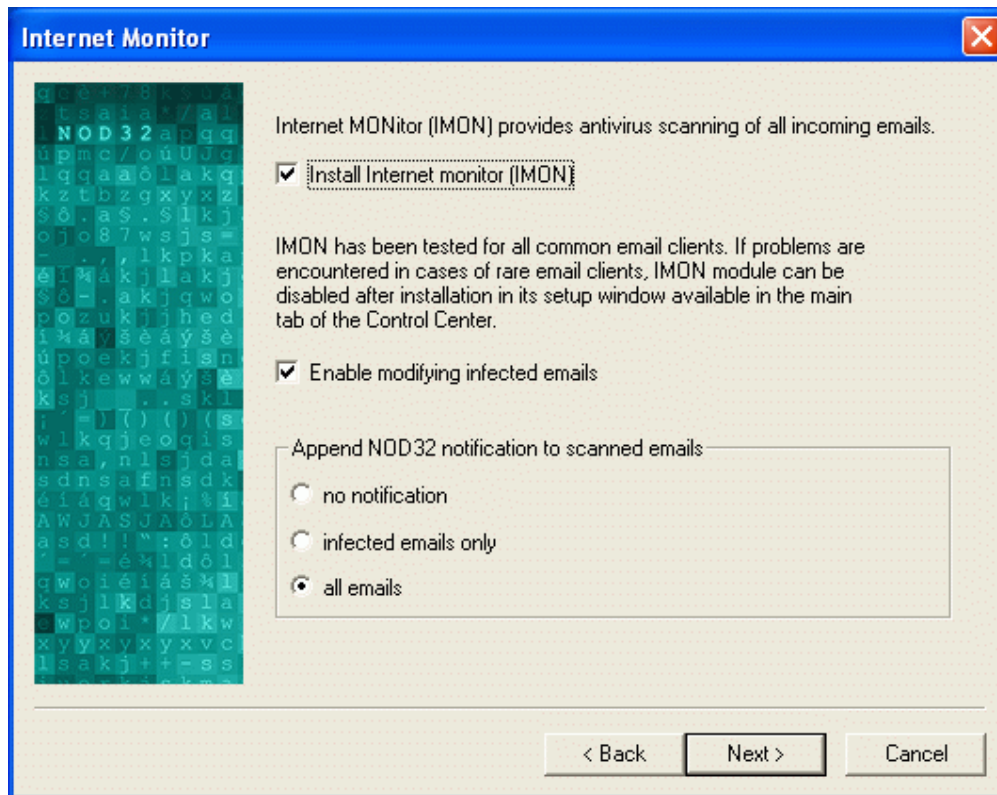
In this installation step, you may configure the automatic **Internet update settings** of the NOD32 system. All scheduled tasks can be configured after the installation using the **Scheduler** module.



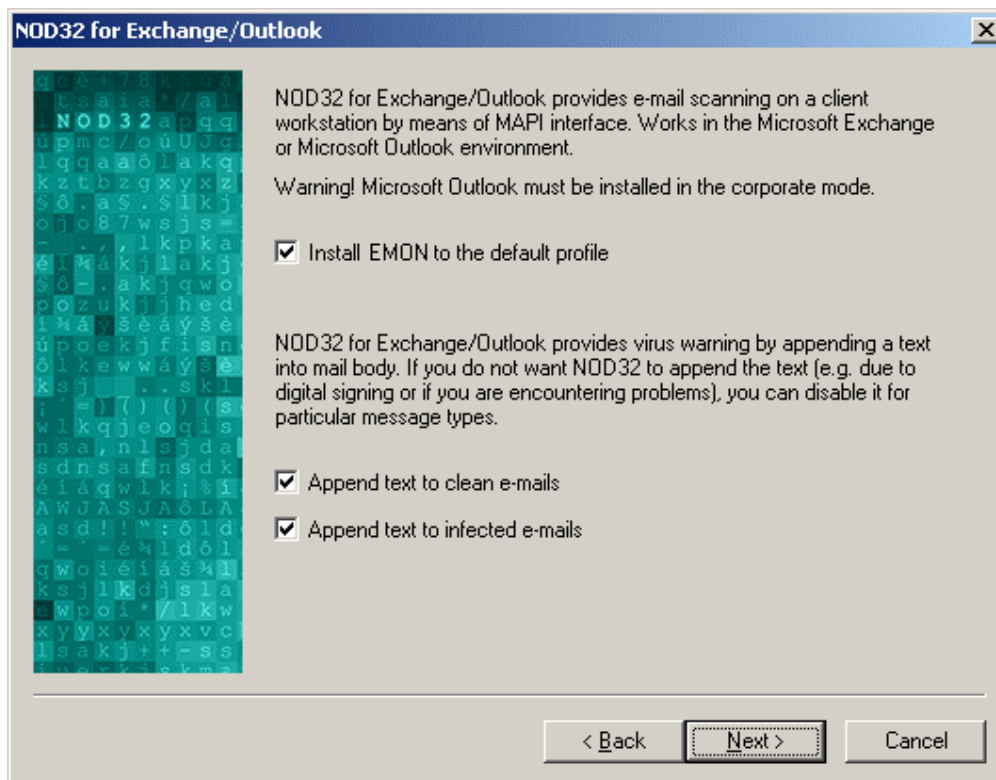
Place the NOD32 icon on desktop – selection of this check box will place the NOD32 on-

demand scanner icon on your computer desktop to allow easy execution. Execution of the NOD32 on-demand scanner can also be performed via NOD32 Control Center.

Enable on-demand scanner using mouse – selection of this check box will integrate the NOD32 on-demand scanner into the content menu of Windows® Explorer. To scan using this feature, right-click the file or folder and select **NOD32 Antivirus System** from the context menu.



The IMON (Internet MONitor) a Winsock based module protects you from viruses entering your computer from the Internet and by email.



The EMON module scans email for MAPI-compatible clients, such as Microsoft Outlook® (just Microsoft Outlook in the Corporate mode – not Outlook 2002 (XP)) and Exchange.

Important note: If there is no MAPI compatible e-mail client on the computer installed, EMON will be not installed too.

After these windows just two more windows are displayed in the Advanced and Expert installation modes (they are displayed in the “Typical installation mode “ section:

- the confirmation of the successfully performed installation
- the restart request

The NOD32 Antivirus system is activated after the restart of the computer.

2.2 Reinstallation of NOD32 version 2 (v2) over the previous version (v1)

The procedure is described at:

<http://www.nod32.com/support/ans/v1tov2>

3. Technical support

The ESET Company provides technical support for its customers. If you need our advice, have any question, or comment, please contact us at:

<http://www.nod32.com/support/support.htm>