



Basta Computing Deletor

Version 3.0

Copyright © 1996-2004 Basta Computing, Inc.
All rights reserved.



Deletor helps you reduce the clutter in your disks and other storage media by deleting files and folders corresponding to your criteria. The application includes a shredding feature to destroy sensitive documents and make them virtually impossible to recover. Files can be filtered by name, name patterns including wildcards, attributes and time properties. The deletion settings are contained in a single window to help you review them at a glance. Deletor also supports filter packs to help you organize commonly used file deletion specifications and quickly recall them by name. Combine this with the command line interface to the program and you can easily automate the cleaning process with batch files, shortcuts, scripts, or a scheduler.



WARNINGS

- Because this application deletes files, we strongly recommend using the "Preview" feature to verify operations before performing them. There is no Undo!
- If you are not familiar with Deletor, practice in an isolated folder with unimportant files first.
- As with any application that deletes files, please be careful and make sure that you are specifying exactly the right files before pressing the "Delete" button.
- Sometimes, different applications may use the same file extension for their files. Make sure you are aware of this before deleting files.

In order to take full advantage of this product, make sure that it is the latest version, which can always be found at our Internet web site at <http://www.basta.com>.

To find out more about Deletor, click on the **Contents** button above, or choose one of the topics below:

- **Basic Information**
 - [System Requirements](#)
 - [Revision History](#)
 - [About Basta Computing](#)
 - [End User License Agreement \(EULA\)](#)
- **Using Deletor**
 - [Installing, Removing and Upgrading Deletor](#)
 - [Using the About Deletor Dialog Box](#)
 - [Using the Main Window](#)
 - [Using the Add/Edit Dialog Box](#)
 - [Using the Command Line](#)
 - [Tips and Examples](#)
- **How To Buy**
 - [What is Shareware?](#)
 - [Purchasing Information](#)



Getting Support

[Frequently Asked Questions \(FAQ\)](#)

[Contacting Basta Computing](#)

Revision History

Help Section: *Basic Information*

This is a release history for Deletor. Feel free to periodically check our Internet web site at <http://www.basta.com> for updated versions in order to upgrade the software.

- **Version 3.0 on 2004-05-11**

Added multiple folder processing. Added file and folder exclusion support to name filtering. Added individual attribute file and folder filtering. Added individual time property filtering. Extended filter packs to include all filters. Overhauled the graphical user interface, the command line interface, and the help system. Moved user settings from the registry to an ini file for easier portability. Added support for Windows XP features. Added support for regional settings. Added support for multiple users. Disabled file and folder deletion confirmation with /AutoDelete. Discontinued Windows 95 and NT compatibility. Upgrading to this major update requires a licensing fee for existing customers who are licensed to use older versions.

- **Version 2.7 on 2001-07-28**

Added folder attribute filtering.

- **Version 2.6 on 2000-02-03**

Added support to shred manually selected files.

- **Version 2.5 on 1999-09-14**

Added file shredding support to prevent the recovery of sensitive documents.

- **Version 2.22 on 1999-07-10**

Added a command line parameter to hide Deletor while it is running.

- **Version 2.21 on 1999-06-30**

Made the time in the date filter optional and fixed a bug preventing the processing of very long command line arguments.

- **Version 2.2a on 1999-03-03**

Fixed a bug causing file scanning to stop prematurely when a folder with security attributes was encountered.

- **Version 2.2 on 1998-11-23**

Added time duration filtering, folder attributes filtering, and command line access to the time filter.

- **Version 2.1 on 1998-07-30**

Added folder removal and fixed log display.

- **Version 2.0 on 1998-05-20**

Added filter packs, command line access and time filtering.

- **Version 1.7 on 1997-06-22**

Updated installation procedure and package info.

- **Version 1.6 on 1996-11-13**

Minor adjustments.

- **Version 1.0 on 1996-06-01**

Published the initial release.

Using the Main Window

Help Section: *Using Deletor*

The main window contains all the controls to operate the program using a graphical user interface (GUI). Deletor can also perform deletions from the [command line](#).

To get help on a control, simply position the cursor over it. Deletor will display a brief description about the control as a [Tool Tip](#). You can also hit the F1 key anytime to get context sensitive information about the feature you are working with. Press the escape (Esc) key to abort lengthy deletion operations.

The Deletor main window contains the following sections:

- [Folders containing items to delete](#)
- [Filter Pack](#)
- [Processing options](#)
- [Attribute filtering](#)
- [Time filtering](#)
- [Name filtering](#)
- [General options](#)

Folders containing items to delete [\(go to index\)](#)

• **<folders list box>**: This is the list of folders that are processed when you press the “Preview” or “Delete” buttons. You can fill the list by either dragging folders from Explorer and dropping them on this list box, or by pressing the add button



located next to the list to select folders using a dialog box interface. Each folder is preceded by a check box indicating whether the folder should be processed or not. Only folders with a checked box are processed. Click on the check box to check it or uncheck it. The number of checked folders over the total number of folders (checked/total) is displayed near the top right corner of the list box. To select a folder, click on it. To deselect a folder, press the control (Ctrl) key and keep it down, then click on the selected folder. To select several folders, press the Ctrl key and keep it down, then click on each folder. Clicking on a folder while the Ctrl key is down toggles the selection state of the folder. If a folder name is partially hidden because it extends beyond the right margin, select it then move the cursor out of the list box then back in to have the name appear entirely as a [Tool Tip](#). Folders are processed in the order they are listed. If the list contains more than one folder, Deletor will automatically select the folder being processed during deletion operations as a progress indicator.



: Add a folder containing items to be deleted by selecting it using a dialog box. Alternatively, you can simply drag folders from an Explorer window and drop them on the folders list box.



: Edit the selected folder.



: Remove the selected folder(s).



: Move the selected folder up one position in the list. Deletor processes folders sequentially starting with the first folder in the list and working its way down.



: Move the selected folder down one position in the list.



: Open the selected folder to browse it.

Filter Pack [\(go to index\)](#)

You can save filter configurations corresponding to specific deletion tasks and easily recall them by name when needed. This way, you don't need to fiddle with the filters before beginning each different deletion job. Note that the controls in the [General options](#) have a global scope and are not affected by this feature.

- **WARNING:** If you change the options in a pack, keep in mind that shortcuts, scripts, batch files and any other previously created object using that pack through the [command line interface](#) will be affected by your changes. This can be an advantage since it enables you to update all your command line objects by merely updating a pack. But it can also hurt you if you forgot about this and weren't planning to propagate the pack change to certain command line objects.

- **<current pack combo box>:** Select the filter pack that you wish to use from the list of saved packs by pressing the down arrow near the end of this control. This box displays the current filter pack that is in effect during deletion operations.



: Add a new filter pack.



: Edit the current filter pack.



: Remove the current filter pack.

Processing options [\(go to index\)](#)

- **Include subfolders:** Scan not only the folders in the list, but their subfolders as well.
- **Delete empty subfolders:** Delete subfolders that are emptied or found empty.
- **Shred files:** Overwrite the contents of the files with null characters before deleting them. When a file is simply deleted, it is possible to recover some or all of its contents later using specialized software. This feature enables you to delete files in a way that makes its contents virtually unrecoverable. Select this option to delete sensitive documents. File shredding slows down the deletion process, so you may want to turn it off when it is not needed. Note that this feature has nothing to do with the [Shred Files](#) button located near the bottom of the main window.

Attribute filtering [\(go to index\)](#)

Use the following options to decide which files and folders to process based on their attributes. The first row of options is used to filter folders. The second row is used to filter files. If none of the options in a row are checked, then all the corresponding items will be ignored. The default settings are "None" and "A". These depict common, unprotected items.

- **None:** Include normal items with no attributes set.
- **R:** Include read-only items.
- **H:** Include hidden items.
- **S:** Include system items.
- **A:** Include archive items.

Time filtering [\(go to index\)](#)

This option lets you filter files based on their time properties. Use it if you wish to delete files that were created, modified or accessed before a certain date or length of time. For instance, you can use to delete files that haven't been modified for the past month.



NOTE: The expression "time property" is used in this document to refer to the creation, modification or access time of a file.

- **Only delete files:** Enable time filtering.
- **Created:** Delete files created before the specified time.
- **Modified:** Delete files last modified before the specified time.
- **Accessed:** Delete files last accessed before the specified time.
- **Time:** Delete only those files whose selected time properties precede the given date and time. The data has the following format: <date> <time>. Only the date is required. When the time is not specified, it is assumed to be midnight (00:00:00 or 12:00:00 AM). The date and time formats are defined in your Windows Regional Settings.
- **Duration:** Delete only those files whose selected time properties precede the given amount of time. The data has the following format: <days>:<hours>:<minutes>:<seconds>. Only the number of days is required. When the other components of a time duration are not specified, they are assumed to be 0.
- **<time data text box>:** If the "Time" box is checked, this field specifies a time value. If the "Duration" box is checked, then it specifies a time duration value. Files with time properties preceding the resulting time in this field will be deleted. Deletor supports time values ranging from 0100-01-01 00:00:00 to 9999-12-31 00:00:00.



: Display a message box containing the time threshold to help you validate or review your input.

- **WARNING:** The time filter relies on your computer clock to delete files. Make sure that your clock is on time to avoid deleting wanted files by accident.

Name filtering [\(go to index\)](#)

How does it work?

- A filter is a file name or a file name pattern specifying targeted files or folders. A filter can be configured to either delete or ignore files and folders.
- A filter can include wildcards. A wildcard is a character that represents one or more characters. The question mark (?) wildcard can be used to represent any single character. The asterisk (*) wildcard can be used to represent any character or group of characters that might match that position in other file or folder names.
- Prefix filters with "<->" to ignore the corresponding items and prevent them from being deleted.
- Filters ending with "\" or "/" specify folder names or folder name patterns. Since folders and subfolders are implicitly included in deletion operations, you only need to filter folders that should be excluded and prefix those filters with "<->". Moreover, Deletor filters by name, not by location, so you cannot enter a path to a specific folder such as "C:\Docs". Instead, you can enter "Docs" to exclude all folders bearing this name. The syntax for such filter would be "<->Docs\".
- Windows file names are not case sensitive.



Examples:

***.tmp**

Delete files with a ".tmp" extension.

<->*.tmp

Ignore files with a ".tmp" extension.

<->Doc

Ignore folders named Doc and their content.

***.do?**

Delete files with a 2 or 3 letter extension starting with ".do" like "Olala.do", "Olala.doc", or "Olala.dot".

Doc*.txt

Delete files starting with "Doc" and having a ".txt" extension such as "Doc123.txt".

.

Delete all files.

- **<filters list box>**: The list of file and folder name filters in the selected filter pack. To select a filter, click on it. To deselect a filter, press the control (Ctrl) key and keep it down, then click on the selected filter. To select several filters, press the Ctrl key and keep it down, then click on each filter. Clicking on a filter while the Ctrl key is down toggles the selection state of the filter.

-
- : Add a new filter.
-
- : Edit the selected filter.
-
- : Remove the selected filter(s).

General options [\(go to index\)](#)

- **Confirm folder processing**: Prompt before processing each folder.
- **Confirm file deletions**: Prompt before deleting each file.
- **Reload folders at startup**: Save the current list of folders when Deletor is closed and automatically reload them the next time Deletor is opened.
- **Exit after the next deletion**: Close the application after the next deletion operation has been completed. The application does not close if the operation is aborted by the user.

The main window also contains the following controls near its bottom:

- **Operations log**: A record of the last 100 operations and statistics are shown here. File names are indented. Folder names are not. Ignored files and folders are prefixed with "<->". Note that Preview mode statistics may appear inconsistent since items are not being actually deleted and may be counted more than once.
- **Close**: Exit the application.
- **Preview**: Simulate the deletion operation. Try it before pressing the "Delete" button to see the files that will be deleted and the amount of disk space that will be recovered when you press the "Delete" button.
- **Delete**: Scan the specified folders for files matching the filters and delete them. Press the Preview button before pressing this one to review operations. There is no undo!
- **Shred Files**: This feature enables you to shred files easily without having to deal with the folder oriented interface of Deletor. This independent command ignores the settings and filters used to process

folders. It shreds the selected files regardless of their state or modification date, so be careful when using it. You may press the escape (Esc) key to abort length operations involving a large number of files. You can select the files using either of the following methods:

- Clicking on this button: This will open the standard Windows open file dialog and let you navigate to the desired folder to select files to shred. You can select several files by clicking them while the control (Ctrl) key is down. When you are done with your selection, press the Shred button to shred the files or the Cancel button to cancel the operation. This selection method can only accommodate a few files
- Dropping files onto this button: Open Explorer, select the files that you want to shred, then drag them and drop them onto this button. You will be prompted with a message box before the files are shredded to confirm that they weren't dropped here accidentally. This selection method can accommodate a large number of files
- **Help:** Display context-sensitive help for this application.
- **About:** Display licensing, version, and copyright information.

Using the Add/Edit Dialog Box

Help Section: *Using Deletor*

The Add/Edit dialog box is used to add or edit [filter packs and filter names](#).

- **<text box>**: Enter the new item here.
- **OK**: Validate and accept input.
- **Cancel**: Exit the dialog box without changes.
- **Help**: Display this help section.

Using the Command Line Interface

Help Section: *Using Deletor*

[Click here to skip the following introduction and go to the usage section](#)

Deletor can be controlled from command line parameters. You can use these from the Windows Command Prompt, in a batch process, a script, or as part of a Windows shortcut to Deletor. See the [examples](#) for more information on using this feature, and the [main window section](#) for more details about each parameter.

To run Deletor from the command line, open a Command Prompt window from the Start menu. There, you will find a menu item labeled Command Prompt, probably under the Accessories submenu. You can either navigate to the Deletor folder and enter "Deletor" followed by its command line parameters, or enter the path to Deletor followed by its parameters if you choose not to navigate to its folder. Otherwise, Windows will not recognize the Deletor command since it doesn't know where it is installed.

★ Examples (broken in several lines for more clarity):

- Calling Deletor from some other folder:

```
C:\Documents and Settings\Username>
```

```
    C:\Program Files\Basta Computing\Deletor <parameters>
```

- Calling Deletor from its folder:

```
C:\Program Files\Basta Computing\Deletor>
```

```
    Deletor <parameters>
```

- Navigating from some other folder to the Deletor folder:

```
C:\Documents and Settings\Username>
```

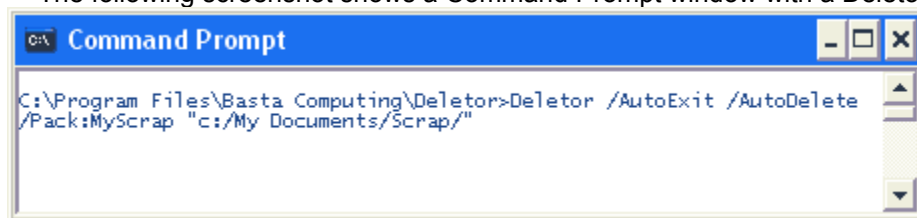
```
    cd C:\Program Files\Basta Computing\Deletor
```

Now that you are in the Deletor folder:

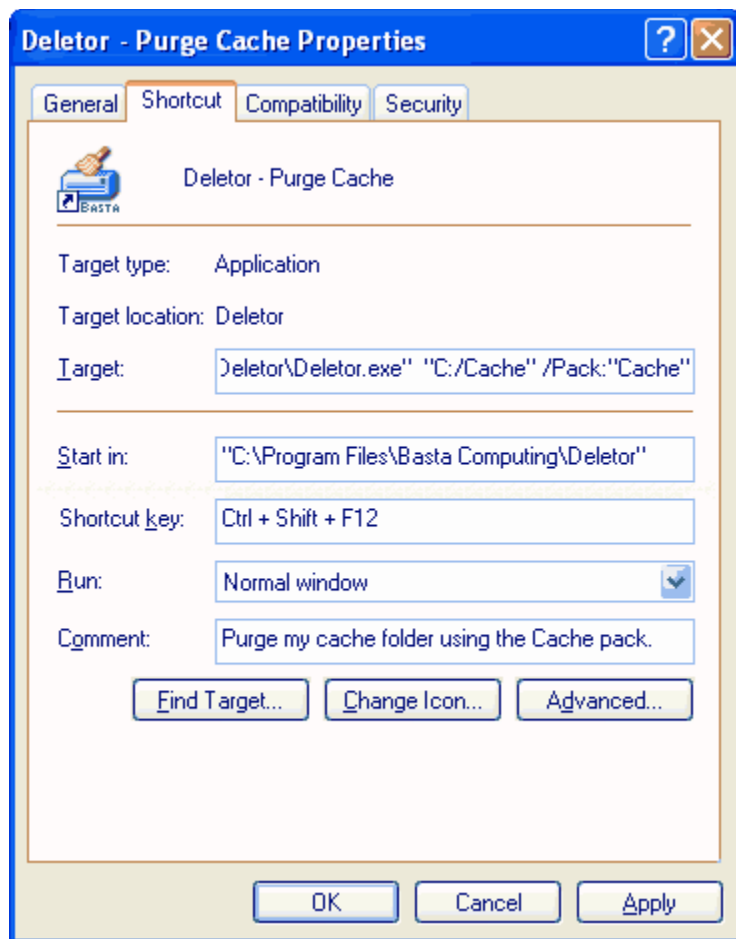
```
C:\Program Files\Basta Computing\Deletor>
```

```
    Deletor <parameters>
```

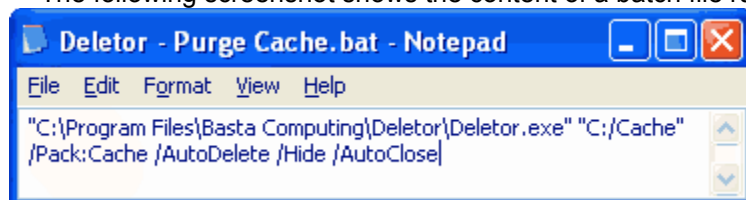
- The following screenshot shows a Command Prompt window with a Deletor command typed into it:



- The following screenshot shows the Properties window of a Windows Shortcut to Deletor:



- The following screenshot shows the content of a batch file running Deletor:



Usage (broken into several lines for more clarity):

Deletor

/Preview
/AutoClose
/AutoDelete
/Hide
/Background
/Pack:"<pack name>"
/IncSub

```

/DeleEmptySub
/Shred
/DAttrib:"<attributes>"
/FAttrib:"<attributes>"
/FTime:"[<time properties>|]<date>[ <time>]"
/FDuration:"[<time properties>|]<d[:h:m:s]>"
/Names:"<name pattern 1>[|<name pattern 2>|<name pattern 3>...]"
"<folder path>"

```



NOTES:

- When Deletor is launched with command line parameters modifying its options, the latter are not saved when Deletor is closed. This avoids interfering with options set during normal window sessions when no command line parameters are specified. For this reason, and to avoid confusion, the option controls in the main window are disabled when such command line parameters are specified.
- Folder paths and option values are defined to be enclosed in double quotes. However, you can forfeit the quotes if the data they enclose does not contain space characters. For instance, "/Pack:MyPack" and "C:/Temp" can be specified without quotes unlike "/Pack:My Pack" and "C:/Temp Files". Omitting quotes around data containing space characters will not necessarily cause an error, but may lead Deletor to misinterpret options, which is not a good idea with an application that deletes files. So it is recommended to enclose command line options in double quotes. This issue is not a Deletor limitation. It is simply subject to Windows' Command Prompt user input parsing rules.

Parameters Description

- **/Preview** ([go to index](#))
Test Mode - Include this option in the command line to make sure that the other parameters are correct. When this option is specified, Deletor displays a message box showing the startup options. Pressing the No button of the message box causes the program to exit. Pressing the Yes button causes Deletor to continue. The "Preview" button is then automatically pressed if /AutoDelete is also specified.
- **/AutoClose** ([go to index](#))
Close Deletor after the next deletion. This option is useful when /AutoDelete is also specified.
- **/AutoDelete** ([go to index](#))
Perform (or preview if /Preview is specified) the deletion operation when Deletor is opened. This is equivalent to having Deletor automatically press the "Delete" or "Preview" buttons. When using this feature, you must specify the path of a folder to process and either a filter pack (/Pack) or a file name filter (/Names). Moreover, the file and folder deletion confirmation options are disabled to avoid disrupting this automation.

★ Examples:

- Deletor /AutoDelete /AutoClose /Hide /Pack:"Temps" "C:/Temp"
- Deletor /AutoDelete /AutoClose /Hide /Names:"*.tmp" "C:/Temp"

• **/Hide** ([go to index](#))

Don't display the Deletor window. This option is useful if you want to run Deletor in the background without attracting attention or disrupting the desktop. /AutoClose and /AutoDelete must be included when using this option.

• **/Background** ([go to index](#))

This option is equivalent to specifying /AutoClose, /AutoDelete and /Hide. Note however that it can't be specified with any of them to avoid confusion.

★ Examples:

- Deletor /AutoDelete /AutoClose /Hide /Pack:"Temps" C:/Temp

is equivalent to

Deletor /Background /Pack:"Temps" "C:/Temp"

- `Deletor /Background /Hide /Pack:"Temps" "C:/Temp"` is invalid because you can't specify `/Background` and `/Hide` simultaneously.

- **`/Pack:"<pack name>"`** [\(go to index\)](#)

Specify the name of the filter pack to use. If you don't specify a pack, then default values will be used. If you specify a pack, you can still overwrite its options by including them in the command line. Only the name filter doesn't have a default value, so you must include the `/Names` parameter if you don't specify a pack. For instance, let's assume that you are dealing with temporary file deletions. You can either (A) specify a previously created pack to delete temporary files, or (B) specify the pack and say, include `/Duration:7` if you want to limit the operation to temporary files modified more than 7 days ago, or (C) not specify the pack but specify `/Names:*.tmp` instead.

- Example: `/Pack:"Temporary file pack"`

- **`/IncSub`** [\(go to index\)](#)

Delete not only the given folder, but also its subfolders.

- **`/DelEmptySub`** [\(go to index\)](#)

Delete subfolders that are emptied or found empty.

- **`/Shred`** [\(go to index\)](#)

Shred files before deleting them to make them virtually impossible to recover.

- **`/DAttrib:<attributes>`** [\(go to index\)](#)

Include folders with the given attributes. These can be a combination of the following:

- N: No attributes set.

- R: Read-only.

- H: Hidden.

- S: System.

- A: Archive.

- Examples:

- `/FolderAttributes:"NA"`

Process folders that have archive or no attributes.

- `/FolderAttributes:""`

Don't process any folders. This is not how this feature is intended to be used.

- **`/FAttrib:<attributes>`** [\(go to index\)](#)

Include files with the given attributes. These can be a combination of the following:

- N: No attributes set.

- R: Read-only.

- H: Hidden.

- S: System.

- A: Archive.

- Examples:

- `/FileAttributes:"NRA"`

Delete files that have archive or no attributes.

- `/FileAttributes:""`

Don't delete any files. This is not how this feature is intended to be used.

- **`/FTime:"[<time properties>]<date[time]>"`** [\(go to index\)](#)

Only delete files with any of given time properties preceding the given date and time. The time properties are optional and "M" is implied in their absence. The time part is optional and midnight is implied in its absence. `/Time` and `/Duration` cannot be used simultaneously. Time properties are defined as following:

- C: The file creation time.

- M: The last time the file was modified.

- A: The last time the file was accessed.

- Examples:

- `/Time:"C|2004-04-01"`

Delete files created before 2004-04-01 00:00:00 (midnight).

- `/Time:"M|2004-04-01 12:34:56"`

Delete files modified before 2004-04-01 12:34:56.

- `/Time:"|2004-04-01"`

Don't delete any files. This is not how this feature is intended to be used.

- `/Time:"2004-04-01"`

Delete files modified before 2004-04-01 00:00:00.

- **`/FDuration:"[<time properties>:]<d[:h:m:s]>"`** [\(go to index\)](#)

Only delete files with time properties preceding the given amount of time. The time properties are optional and "M" is implied in their absence. Only the number of days needs to be specified. /Time and /Duration cannot be used simultaneously. Time properties are defined as following:

- C: The file creation time.
- M: The last time the file was modified.
- A: The last time the file was accessed.

- Examples:

- `/Duration:"CM|1:2:3:4"`

Delete files created or modified more than 1 day, 2 hours, 3 minutes and 4 seconds ago.

- `/Duration:"M|30:00:00:00"`

Delete files modified 30 or more days ago.

- `/Duration:"|30:00:00:00"`

Don't delete any files. This is not how this feature is intended to be used.

- `/Duration:"30"`

Delete files modified 30 or more days ago.

- **`/Names:"<name pattern 1>[<name pattern 2>|<name pattern 3>...]"`** [\(go to index\)](#)

Specify the names and name patterns of file and folders to include or exclude from the operation. If you specify more than one pattern, separate them with the "|" character.

- Examples:

- `/Names:"*.tmp|*.temp"`

Delete files with "*.tmp" and "*.temp" extensions.

- `/Names:"*.xl?|<->*.xls|<->Important\"`

Delete files with a three letter extension starting with "xl", but exclude files with a "xls" extension. Exclude also folders that are named "Important".

- **`"<folder path>"`** [\(go to index\)](#)

Specify the path of the folder to process. It is required with /AutoDelete and optional otherwise.

- Example: `"C:\Temp"`

Tips and Examples

Help Section: *Using Deletor*



Tips

- Press the escape (Esc) key to interrupt lengthy operations.
- You can specify the folder to be processed in the Deletor window using any of the following methods:
 - Typing the folder in the corresponding text box.
 - Dragging the folder from Explorer and drop it in the text box.
 - Clicking on the button near the text box to invoke the folder browser.
 - Make Deletor easier to access by creating a shortcut to it on the desktop. Then double-click the shortcut to open Deletor or drag a folder and drop it on the shortcut to open Deletor and start in that folder. Check the "Reload last folder at startup" option if you want Deletor to remember which folder you used last.
- Create several Deletor shortcuts, each of which specifying a command line to perform a different cleaning job.
- To add several filters quickly, click on the Add Filter button to display the Add Filter dialog box. Type in the filter then press the Enter key twice (the first Enter will accept the filter and the second one will display the dialog box again to let you enter the next filter). Type in the next filter then press the Enter key twice, and so on.
- When you run Deletor without using command line parameters besides a folder specification, it saves your settings before closing in order to restore them when you run it again. This is typically the case when opening Deletor from the Start menu or its original desktop icon. However, if you specify deletion options from the command line, Deletor will treat the session as a one-time action and will not save its settings. This feature keeps your custom Deletor shortcuts from interfering with the settings you have chosen while running Deletor normally, without command line parameters.



Examples

- (1) You use a product that creates temporary or transient files that clutter your disks, and would like to purge them:
 - Add name pattern filters corresponding to the extensions of the files, for example *.tmp".
 - From Explorer, drag the folder you want to purge, and drop it onto the "Folders containing items to delete" box.
 - Press the "Preview" button and review the results of the operation in the log window. You can use this to verify what you are doing or to determine the approximate amount of disk space that would be recovered.
 - Press the "Delete" button to delete the targeted files.
- (2) You want to limit the files deleted in the previous example to those modified more than two weeks ago:
 - Check the "Only delete files" box.
 - Choose the "Modified" and the "Duration" options.
 - Enter "14" in the time field. 14 is the number of days in 2 weeks.
- (3) You want to further limit the files deleted in the previous example by excluding files with a ".doc" extension:
 - Click on the button to add name filters.

- Enter "<->*.doc" in the Add Filter dialog box and press OK.
- (4) You change your mind about excluding files with a ".doc" extension and decide to exclude folders with a name containing the string "doc" instead, such as "Docs" or "Your Documents":
- Click on the "<->*.doc" filter added earlier to select it.
 - Click on the button to edit name filters.
 - Enter "<->*doc*" in the Edit Filter dialog box and press OK.
- (5) As you create subfolders over time, you decide to make Deletor process them as well. Moreover, you opt to have the files shredded instead of simply deleted because some of the documents process the files in them include them. You change your mind about excluding files with a ".doc" extension and decide to exclude folders with a name containing the string "doc" instead, such as "Docs" or "Your Documents":
- Click on the "<->*.doc" filter added earlier to select it.
 - Click on the button to edit name filters.
 - Enter "<->*doc*" in the Edit Filter dialog box and press OK.
- (6) You would like to create a filter pack for deleting temporary Internet files that use .htm, .html, .gif and .jpg as their file extensions and that are older than 30 days:
- Click on the button to add packs.
 - Enter a pack name (e.g. "Old Internet Files") in the Add Pack dialog and press OK. You should see that a new pack has been created and selected automatically.
 - Add the name filters one after the other. The filters list should contain the following items when you're done: *.htm, *.html, *.gif and *.jpg.
 - Check the "Only delete files" box.
 - Choose the "Modified" and the "Duration" options.
 - Enter "30" in the time field.
 - Now when you want to delete old Internet files, simply run Deletor, select the "Old Internet Files" pack, select a folder to purge, verify your options, and press the "Delete" button.
- (7) You want to create an icon on your desktop that you can double-click to delete all files in the "C:\Documents and Settings\Username\Local Settings\Temporary Internet Files" directory that are described in the "Old Internet Files" pack created above:
- Create a desktop shortcut to Deletor.
 - Right-click on the shortcut and select the "Properties" menu.
 - Click on the "Shortcut" tab of the Properties dialog box. The "Target" edit box should contain a command that runs Deletor.
 - Go to the end of the line and add /Preview /AutoDelete /Pack:"Old Internet Files" "C:\Documents and Settings\Username\Local Settings\Temporary Internet Files". The text should be similar to the following command line:


```
C:/Program Files/Basta Computing/Deletor/Deletor.exe /Preview
/AutoDelete /Pack:"Old Internet Files" "C:\Documents and
Settings\Username\Local Settings\Temporary Internet Files"
```
- Since the "/Preview" option is specified, this command will only simulate the delete operation.
- Try the shortcut now. After making sure that the shortcut is doing exactly what you want, go to the shortcut properties again and remove the "/Preview" option to change Deletor from simulation mode to actual deletion mode.
 - If you are not interested in examining the results of the operation, add the /AutoClose option to automatically close Deletor after performing the operation.
 - If you are annoyed with the Deletor window being displayed during the operation, add the /Hide option. The final result is:


```
C:/Program Files/Basta Computing/Deletor/Deletor.exe /AutoDelete
```



```
/AutoClose /Hide /Pack:"Old Internet Files" "C:\Documents and  
Settings\Username\Local Settings\Temporary Internet Files"
```

System Requirements

Help Section: *Basic Information*

You need the following in order to run Deletor:

- Microsoft Windows 98, Me, 2000, XP, or later.
- About 1 MB of free disk space to install the software.

Installing, Removing, and Upgrading Deletor

Help Section: *Using Deletor*

Installing Deletor

Close Deletor if it is currently running, then run the *SetupDeletor.exe* file and follow the instructions on the screen.

Removing Deletor

Close Deletor if it is currently running, then click the Windows *Start* button and select *Settings*, then *Control Panel* from the *Start* menu. Open the *Add/Remove Programs* dialog box, locate Deletor in the list of installed programs, and remove it by following the instructions provided in the dialog box.

• Notes

• Configuration and order form files, generally with a ".dat", ".ini", ".txt", or ".bak" extension, may be created in the [user application data folder](#). These files will not be deleted for your convenience in case you wish to refer to them at a later date. Delete them manually if you do not want them.

• Do not edit the installation log file *install.log*. This could corrupt the removal procedure for this software.

Upgrading Deletor

Close Deletor if it is currently running, then install the new version in the same folder where you had installed the old one.

Using the About Deletor Dialog Box

Help Section: *Using Deletor*

The About Deletor dialog box can be displayed by selecting the About Deletor menu item or by pressing the About button if available. This dialog box contains the version number, legal notices, purchasing instructions, and other information about the product. If you contact Basta Computing for technical support, please remember to include the product name and version number in your correspondence.

The buttons in the About Deletor dialog box are described below:

- **OK:** Close the dialog box.
- **Purchasing Information:** Display a dialog box containing information about [purchasing licenses](#) to use Deletor. This is also where you can enter your product password.
- **License Agreement:** Display the [End User License Agreement \(EULA\)](#) for Deletor. Please read this document carefully. Using Deletor indicates your acceptance of all the terms and conditions in the EULA. If you do not agree to these terms and conditions, you must discontinue using Deletor immediately and delete all copies of the software that you have.
- **<http://www.basta.com>:** Visit the Basta Computing Internet web site using your default web browser. Our site contains up-to-date information about our products and services. We invite you to come and take a look at everything we offer. This button will not work if you are not properly equipped to access the Internet and browse the World Wide Web.

Purchasing Information

Help Section: *How to Buy*

If you use Deletor beyond the evaluation period of thirty (30) days, you must purchase the appropriate number of licenses to continue using it. Please see the [End User License Agreement \(EULA\)](#) for the complete set of policies governing the legal use of this product.

Licensing Benefits

You will receive the following when you purchase licenses to use our software products:

- Single end user license(s) granting you rights to use the software.
- A product password to disable the expiration mechanism and the nag screen on products that have them.
- Free e-mail support and priority over unlicensed customers.

Licensing Procedure

The price of a **single end user license** to use Deletor is **\$15 U.S. dollars**.

You must purchase a license for each computer running Deletor. Please visit our Internet web site at <http://www.basta.com> for information about quantity discounts.

Licenses can be purchased directly from Basta Computing or through the authorized resellers listed on our purchasing information web page at <http://www.basta.com/Purchasing.htm>. Feel free to visit this web page for a list of the latest available payment methods.

Ordering from Basta Computing

- If you are faxing or mailing the order form, please fill it out using the computer so we can easily read it.
- We accept payments by credit card, [PayPal](#), check and cash.
- Purchase orders are accepted. Please contact us for more information.
- Our software does not include adware, spyware, or any other similar technology
- We respect the privacy of our customers and do not give out their information.

Ordering Online

Secure and regular online order forms are available at <http://www.basta.com/Purchasing.htm>.

Ordering by E-mail

1. Fill out the order form enclosed in the product. You can access it from the [About Deletor dialog box](#), or by pressing the Yes button in the Welcome message box that is displayed when you run the software.
2. Copy the contents of the order form into an e-mail message and send it to sales@basta.com.

Ordering by Fax or Postal Mail

1. Fill out an online order form at <http://www.basta.com/Purchasing.htm>, or the off-line order form enclosed in the product. You can access the off-line form from the [About Deletor dialog box](#), or by pressing the Yes button in the Welcome message box that is displayed when you run the software.

2. Print the form, sign it, date it, and send it to the appropriate address below:

Fax: +1 (425) 889 8745

Postal Mail: Basta Computing
P.O. Box 485
Kirkland, WA 98083-0485
USA

Notes regarding payments made by check, money order and cash

- Make your checks payable to Basta Computing.
- Checks in U.S. dollars must be drawn on a U.S. bank account.
- Checks in other currencies must meet the requirements posted at <http://www.basta.com/Purchasing.htm>.
- Cash payments must be in U.S. dollars only. We cannot be held liable if they get lost or stolen in transit.
- Calculate your charges and discounts carefully. We do not make refunds for overpaid amounts equal to or less than \$5 U.S. dollars. We credit your account instead.

Ordering by Phone

Please visit our purchasing information web page at <http://www.basta.com/Purchasing.htm> for up-to-date information.

Ordering From Other Vendors

Please visit our purchasing information web page at <http://www.basta.com/Purchasing.htm> for an up-to-date list of Basta Computing authorized resellers and how to reach them.

End User License Agreement For Basta Computing Software

Help Section: *Basic Information*

IMPORTANT: Carefully read this End User License Agreement ("Agreement") before installing, copying or using this Basta Computing, Inc. ("Basta") software product ("Software") in any way whatsoever. Any installation, copy, or use of the Basta Software indicates your full and irrevocable acceptance of all the terms and conditions of this Agreement. If you do not agree to these terms and conditions, please be aware that you are not authorized to install, copy, or use the Software and that any unauthorized act may entail your liability.

COPYRIGHT

Copyright © 1996-2004 Basta Computing, Inc.

All rights reserved.

1- This Software product is a copyrighted work and is protected by United States and international copyright laws and treaties.

2- This Software product is licensed, not sold. It is, and shall remain at all times, the absolute and unrestricted property of Basta. Nothing in this Agreement shall prejudice, impair, jeopardize or otherwise adversely affect the rights of Basta as sole and exclusive owner of the Software.

TRIAL PERIOD

1- The Software is initially provided to you for evaluation purposes. You may use it free of charge during a non-renewable trial period of thirty (30) calendar days. Upon the expiry of such period, you must immediately discontinue using the Software unless you register it in accordance with the provisions of this Agreement.

2- If you continue using the Software after the expiration of the aforesaid period without registering it, Basta shall have the right to institute all actions, take all steps and seek all remedies as may be necessary or appropriate in order to stop you from using the Software, and to claim and recover from you all losses and damages, whatsoever and howsoever arising, whether directly or indirectly, out of or in connection with such unauthorized use. You shall also be liable to indemnify Basta for and against all costs and expenses incurred by Basta including, but not limited to, court and legal fees.

REGISTERING AND USE

1- Registering the Software means that, subject to your payment of the applicable fee, Basta will grant you a single end user license to use, run, access, display, or otherwise interact with ("Use") the Software on only one single computer, workstation, server, terminal, handheld PC, or other electronic device ("Computer") at any one time. The Software is considered to be "in Use" when it is loaded into RAM or installed on a hard disk or other storage device. You are not authorized to dissociate, alter or amend the Software in any way; and to Use the part thereof on several Computers. However, the primary user of the Computer on which the Software is installed may also install the Software on a portable computer for his or her exclusive use.

2- If you wish to Use the Software on more than one Computer, you must obtain a number of end user licenses equal to the number of Computers on which the Software will be Used and pay the registration fees accordingly.

3- Since you have the opportunity to try the Software before registering it, you will not be entitled to any refund or exchange for any reason.

PROHIBITED USES

1- The Software can only be used for the purposes described in the documentation pertaining to the Software as published and amended exclusively by Basta from time to time.

2- Reverse engineering, decompiling, disassembling or otherwise attempting to discover the source code of the Software, disclosing, divulging or making registration keys or product passwords publicly available are illegal and shall constitute a violation of this Agreement.

3- No portion of the Software, including but not limited to, programs, algorithms, codes, texts, images, or sounds may be modified, adapted, translated, copied, stored, distributed, used or accessed in any way except as detailed in this Agreement.

TRANSFER

An end user license may be transferred to a third party subject to the obtaining of prior agreement to be bound by all the terms of this Agreement. Upon such a transfer, the previous owner of the end user license agrees that his rights to such license are terminated and that he will immediately discontinue using the Software.

DISTRIBUTION

1- This Software cannot be re-sold or used in any profit-making activities, including but not limited to, distribution as part of a commercial product or service, without the prior written consent of Basta.

2- Copies of the Software that are intended for distribution purposes must be obtained from Basta or downloaded from its Internet web site, and distributed as-is, in their original packaging, including all the copyright and other proprietary notices pertaining to, and included in the Software.

3- Nothing in this Agreement shall confer upon you the right to grant user licenses. Such right is, and shall remain at all times, exclusively vested in Basta.

DISCLAIMER OF WARRANTY

Basta products and services are provided without warranty of any kind, either express or implied. Basta cannot be held liable for any special, direct, indirect, incidental or consequential damages whatsoever (including but not limited to loss of profit) arising out of their use, or inability to do so.

TERMINATION

1- Your right to use the Software for evaluation purposes shall terminate forthwith and without notice after thirty (30) calendar days from the date of your first Use, unless the Software has been registered during this period pursuant to the provisions of this Agreement. Basta reserves the right to grant additional evaluation time in certain circumstances including, but not limited to the release of a new version of its software.

2- If you breach, default, violate or fail to comply with any of the provisions contained herein, Basta shall have the right to terminate this Agreement forthwith and without the need to any judiciary or extra-judiciary proceeding or prior notice. Upon such termination, you shall be obligated to discontinue using or distributing the Software immediately. Basta shall have the right to claim and recover from you all losses and damages, whatsoever and howsoever arising, whether directly or indirectly, out of or in connection with any such breach, default, violation and non-compliance, and you shall also be liable to indemnify Basta for and against all costs and expenses incurred by Basta including, but not limited to, court and legal fees.

3- Upon the termination of this Agreement, you shall not be entitled to claim or recover from Basta any amount paid to Basta prior to such termination.

4- The termination of this Agreement shall not affect your obligations arisen under it; which obligations shall survive such termination.

GENERAL

1- Failure of Basta to enforce its rights with respect to any violation of this Agreement shall not constitute, or be interpreted as, a waiver from Basta to exercise such right at any later stage, as it shall deem appropriate.

2- Should any provision of this Agreement be in conflict with any law governing this Agreement, it will be deemed stricken from the Agreement and the remaining provisions will remain in effect.

3- This Agreement shall be binding upon the parties hereto and their respective successors and permitted assigns.

4- This Agreement shall be construed, interpreted, implemented and governed in accordance with the laws in force in the state of Washington, United States of America. You shall submit to the exclusive jurisdiction of the courts in Washington with respect of any claim, controversy, difference or dispute arising from or in connection with this Agreement.

About Basta Computing

Help Section: *Basic Information*

Basta Computing is a software development, publishing, and services corporation located in the state of Washington, USA. We are a team of enthusiastic software professionals, dedicated to making your computer experience a bit more pleasant.

We released our first software title in June of 1996 and have been building upon our initial efforts since then. Most of our software is distributed as [shareware](#). We are members of the Association of Shareware Professionals (ASP). Our main distribution channel is the Internet, but many other publishers include our products in their CD-ROM compilations as well.

Basta's programs are small, fast and handy. We tend to avoid fancy splash screens and multimedia bloat, and instead, focus on simplicity and above all, reliability at very affordable prices. Our software does not include adware, spyware, or any other similar technology. We respect the privacy of our customers and do not give out their information.

What is Shareware?

Help Section: *How to Buy*

This product is distributed as shareware.

Shareware is a software distribution and sales concept that gives users the opportunity to try a product during a free evaluation period before purchasing the appropriate number of end user licenses to continue using it. Shareware software is also known as try-before-you-buy software. We encourage you to take advantage of the thirty (30) day evaluation period for our shareware products, and make sure that they meet your needs before your purchase.

Shareware requires a high level of integrity from both the software publisher and the end user. As a software developer and publisher, we do our best to provide high quality software and services at a reasonable price. As long as our end users find value in our efforts and purchase the appropriate number of licenses for the products they are using, this will give us the support we need to continue our development efforts. When shareware works, the result is more software choices for you, the end user!

Click [here](#) for information about purchasing licenses to use this product.

Frequently Asked Questions (FAQ)

Help Section: *Getting Support*

Feel free to visit the [FAQ Basta web page](#) for an up-to-date list of questions and answers.

Q: Why aren't you replying to my e-mail messages?

A: Please include the product name and reason for your inquiry in the subject to help prevent anti-spam filters from discarding your message.

Q: Why did the evaluation period expire prematurely?

A: The evaluation mechanism uses the computer clock. Don't change the clock during the evaluation period. If it is too late, try the product on another computer or e-mail us to request a temporary password. Registering the product will eliminate the problem. If you've tried our products before and you install a newer version of a product on your computer, you will be given some additional time to evaluate the new features, even if your evaluation time on the previous version had expired.

Q: What is the recommended way to upgrade an existing version of a product?

A: Close the application if it is currently running, then install the new version in the same folder where you had installed the older version.

Q: What is the easiest way to purchase upgrade licenses?

A: Press the "Yes" button in the Welcome screen, or the "Purchasing Information" button in the About box. This will open the "Purchasing Information" window. Press the "Quick Online Upgrade" button in that window to open the Internet browser and navigate to the Basta online order form. If you use a different method to order, be sure to send us your old password to be eligible for the upgrade. Our multiple license discount schedule applies to upgrades as well.

Q: I launched an application and nothing happened. What's going on?

A: Some applications are anchored in the [taskbar status area](#), which is where the computer clock is displayed (the bottom right of the desktop by default). Find the icon of the application there by looking for its name in the [tool tip](#) that appears when the mouse pointer remains over an icon for a few seconds, then right-click on the icon to invoke the application's menu.

Q: How can I make a product start hidden?

A: Most of our products start using the same settings they were closed with. If you close an application while its main window is hidden, the window should be hidden the next time you run the application.

Q: How can I backup or transfer my program settings?

A: The options that you have chosen while using most Basta applications are stored in data files with a ".dat", ".ini", or ".txt" extension. These files are located in the [user application data folder](#). You can transfer options from one installation to another by following the instructions below. This is useful for making a backup of your settings, keeping your home and work settings synchronized, configuring a computer site with many machines, or exchanging settings with friends.

1. Close the application on the target installation and make a backup of its data files.
2. Replace the data files on the target installation with the data files from the source installation.

3. The next time you run the application on the target installation, it should reflect the settings of the source installation.

Contacting Basta Computing

Help Section: *Getting Support*

General Notes

You can contact us by any of the methods listed below. When you do, please let us know if you are a licensed customer by simply mentioning it in your correspondence.

Notes About Technical Support

Before contacting us for technical support, please remember to look at the [Frequently Asked Questions \(FAQ\)](#) section in the help file and on the Internet web site at <http://www.basta.com> to see if your question might be answered there. If you do contact us for support, please be as specific as possible about the problem and include the product name and version as well as the name and version of the operating system that you are using.

E-mail

Notes:

- *Include the product name and topic in the subject to help prevent anti-spam filters from discarding your message.*
- *Indicate if you are a licensed user.*

Sales:	sales@basta.com
Support:	support@basta.com
Suggestions:	suggestions@basta.com
Consulting:	consulting@basta.com
General information:	info@basta.com

Fax

+1 (425) 889 8745

Postal Mail

Basta Computing
P.O. Box 485
Kirkland, WA 98083-0485
USA

Internet Web Site

<http://www.basta.com>

Taskbar Status Area

This is the portion of the Windows taskbar that includes the clock.



It is usually located in the lower right hand corner of the desktop.

Tool Tip

A Tool Tip is a tiny popup window that presents a short description of a user interface element when you position the mouse over the element for a period of time.

This is a tool tip window

User Application Data Folder

The options that you have chosen while using the application are stored in data files with a “.dat”, “.ini”, “.txt”, or “.bak” extension. These files are located in the user application data folder (typically "C:\Documents and Settings\Username\Application Data\Basta Computing\..."), or in the application folder (typically "C:\Program Files\Basta Computing\...") under Windows 9x/Me. The folder location on your computer depends on your Windows and application configurations.

