

**User's Guide**

---

**Mobile PhotoAlbum®**  
**2004**

---

**For Palm OS**

© Copyright Mobile Systems Inc, 2004

All rights reserved. This manual and the programs referred to herein are copyrighted works of Mobile Systems, Inc.

The information in this document is a subject to change without notice.

Mobile Systems, Inc. accepts no liability for loss or consequential loss from misuse or any defect or failure of the programs howsoever arising.

© 2002-2004 Mobile Systems Inc. Mobile Photo Album and Mobile Photo Album logo are trademarks or registered trademarks of Mobile Systems, Inc. in the U.S. and/or other countries. All rights reserved.

3Com, the 3Com logo, Palm Computing and HotSync are registered trademarks, and Palm III, Palm IIIx, Palm V, the Palm III logo, the Palm IIIx logo, the Palm V logo and the Palm Computing platform logo are trademarks of Palm Computing, Inc, 3Com Corporation or its subsidiaries.

<http://www.mobi-systems.com/>

Mobile Photo Album uses the jpeglib shared library for Palm OS by Independent JPEG Group.

JPEGLIB for Palm OS

Copyright (c) 2003, Yves Piguet.

All rights reserved.

Based on the work of the Independent JPEG Group.

For more information visit <http://www.nyctergatis.com/jpeglib/index.html>.

# Contents

<b>CONTENTS .....</b>	<b>3</b>
LICENSE AGREEMENT .....	5
LICENSE AND DISTRIBUTION.....	5
RESTRICTIONS .....	5
NO WARRANTIES .....	5
LIMITATION OF LIABILITY .....	6
<b>GETTING STARTED .....</b>	<b>7</b>
SYSTEM REQUIREMENTS.....	7
INSTALLATION AND UN-INSTALLATION.....	7
<i>Installing Mobile PhotoAlbum Using A Windows Computer</i> .....	7
<i>Installing Using A Macintosh</i> .....	8
<i>Uninstalling Mobile Photo Album</i> .....	9
REGISTRATION .....	9
<i>Product IDs and Unlock Keys</i> .....	9
<i>Online Registration of Products</i> .....	10
<b>VIEW MODES.....</b>	<b>12</b>
THE INFO VIEW .....	13
FILE FORMATS.....	14
<i>Mobile PhotoAlbum images</i> .....	14
<i>Bitmaps</i> .....	14
<i>JPEG Files</i> .....	15
MANAGING CATEGORIES .....	15
<b>VIEWING AND MANAGING IMAGES.....</b>	<b>17</b>
OPEN .....	17
<i>Image Info</i> .....	17
ZOOM .....	18
SLIDESHOW .....	18
EDIT.....	19
DELETE.....	19
NOTES .....	19
<b>PREFERENCES .....</b>	<b>21</b>
SLIDESHOW .....	21
BROWSE VIEWS.....	21
<i>General Preferences</i> .....	22
<i>Export Preferences</i> .....	22
<i>Card Preferences</i> .....	23
<i>Info Preferences</i> .....	24
<b>TRANSFERRING PICTURES TO AND FROM YOUR DESKTOP COMPUTER.....</b>	<b>25</b>
MOBILE PHOTO ALBUM CONDUIT SETTINGS .....	26
<i>Sync Folder</i> .....	26
<i>Picture quality settings</i> .....	26

HOTSYNC ACTIONS.....	26
<i>Do nothing</i> .....	26
<i>Desktop Overwrites Handheld</i> .....	27
<i>Handheld Overwrites Desktop</i> .....	27
<i>Synchronize the files</i> .....	27

# License Agreement

\*\*\* Please read this entire agreement \*\*\*

This End-User License Agreement (the "Agreement") is a legal agreement between you ("Licensee"), the end-user, and Mobile Systems Inc. ("Mobile Systems") for the use of the Mobile Paint software product ("Software"). By using this Software or any part of it, you are agreeing to be bound by the terms of this Agreement. If you do not agree to the terms of this Agreement do not install this Software.

## License and Distribution

The evaluation copy of this Software is free of charge for unlimited period of time. You must pay the license fee and register your copy to continue to use the Software and remove the nag screen. Until you purchase and register the product you will not be able to access the additional database provided by Mobile Systems Inc.

The evaluation copy is fully functional except for the nag screen that slows the start up the more times you start the program. You're allowed to make as many copies of this evaluation version (in UNMODIFIED form) as you wish to distribute.

## Restrictions

You may not nor permit anyone else to de-compile, reverse engineer, or disassemble, modify, or create derivative works based on the SOFTWARE or the documentation in whole or in part. You may not use the Software for any commercial purpose or public display, performance, sale or rental. You may not use the Software to perform any unauthorized transfer of information (e.g. transfer of files in violation of a copyright) or for any illegal purpose.

## No Warranties

This software and any related documentation is provided "as is" without warranty of any kind.

Mobile Systems Inc. specifically disclaims all warranties, expressed or implied, including but not limited to implied warranties of fitness for any particular purpose and of merchantability.

## **Limitation of Liability**

In no event will Mobile Systems Inc. be liable to you for any damages, including but not limited to any loss of data, lost profits, lost savings, commercial damage or other incidental or consequential damages arising out of the use or inability to use this program directly or indirectly, or for any claim by any other party.

# Getting Started

## System Requirements

Palm OS 3.5 or higher running Palm device.

## Installation and Un-installation

### *Installing Mobile PhotoAlbum Using A Windows Computer*

1. Make sure that HotSync is running. Its icon should be visible in the system tray in the down right corner of the screen of your Windows OS.
2. Double-click the installation exe file to launch the installation setup program.
3. Select **Install/Reinstall Components**. After each installation step click **Next**.
4. Carefully read the instructions on your screen and **enable the check boxes for the components you want to install**. If you don't make any modifications and just **Next** the installation setup will include the most commonly used components so the program can run properly.
5. If you have more than one HotSync user names that you synchronize with the same Palm Desktop, **specify the user** for which you want to install the program.
6. The setup program will give you the ability to install the sample files to the expansion card.
7. Carefully read any additional dialogue messages that may appear about the type of your Palm device and the Palm OS version that you use. Some program components can be device dependent and it is important that you correctly specify your device details.

---

Steps 4 to 7 are optional and can be omitted by novice users without making any changes by simply clicking **Next**. However, we recommend that you read the instructions in these steps.

---

8. Click **Finish** when the installation setup is complete

9. Put your Palm device in its cradle, connect it to your PC and synchronize to upload the installed program on your handheld device.

## *Installing Using A Macintosh*

The distribution files for installation through Mac OS computers come as **sit archive files**. The sit files are not Palm readable files but archive files that contain the installation files. To be able to extract these files you will need **StuffIt Expander**. The expander program is free and can be downloaded from <http://www.stuffit.com/win/expander/index.html>.

To extract the sit archive and install the downloaded software on your Palm device:

1. Expand the downloaded **.sit** file and save the extracted files in selected folder on your desktop computer.
2. Double-click the HotSync Manager icon in the Palm folder.
3. Choose Install Handheld Files from the HotSync menu.
4. From the User pop-up menu, select your user name.
5. Click Add to List.
6. Check if the folder with the extracted files does not have subfolders with additional databases and specific for your device files and instructions. If necessary, add those files to the install tool. The main folder can also contain text help file that can help you in deciding which files should be installed on your Palm device.
7. Select the folder where you have extracted the distribution sit file from the popup menu.

---

The files in Palm readable format have **pdb** or **prc** file extensions. The files that can be installed to your handheld device have these file extensions. Any other files will not be recognized by the HotSync tool and will generate an error. Most generally the prc files are actual Palm OS programs while the pdb files contain data.

---

8. Select all files with prc and pdb extensions.
9. Click Add File to add the selected files to the Install Handheld Files List.
10. Check if the folder with the extracted files does not have subfolders with additional databases and specific for your device files and instructions. If necessary, add those files to the install tool. The main folder can also contain text help file that can help you in deciding which files should be installed on your Palm device.



11. Close the Install Handheld Files window.
12. Put your Palm device in its cradle, connect it to the PC and synchronize.

## *Uninstalling Mobile Photo Album*

1. From you're the *Main Application Launcher* on your Palm device, open the main menu and select **Delete**.
2. Tap Mobile Photo Album and then select **Delete**.
3. Tap **Yes** to confirm you wish to remove the program. Mobile PhotoAlbum and all image files associated with it in the main memory of your Palm device will be removed from your handheld.

## Registration

Mobile PhotoAlbum is a downloadable shareware product available for free evaluation period or registration at our home site: [www.mobi-systems.com](http://www.mobi-systems.com)

The trial period is 15 days, after which you should register the product to be able to use it.

To register your copy of Mobile PhotoAlbum, order the product at <http://www.mobi-systems.com> and use the online registration form, link to which you will find only in your purchase confirmation message, to obtain the Unlock key for your product

## *Product IDs and Unlock Keys*

The **Product ID** is 4x6 symbols sequence, used for the registration key generation. To obtain the **Product ID** for your copy of Mobile PhotoAlbum, start the program and tap **Enter Code**. The *Registration Form* will appear, in which you will find the required ID.

**Enter Key**

**Product ID:**  
407071-B1C59B-EA59DD-9BACF7

**Unlock Key:**

1 2 3 A B  
4 5 6 C D  
7 8 9 E F  
0

OK  
Cancel

© Mobile Systems, Inc.

The **Unlock Key** is a combination of 4x6 symbols (for example: **3C3125-3AB9D8-DE5203-F4345B**), which you will receive after you submit your Product ID either through the online registration form or by e-mail to [support@mobi-systems.com](mailto:support@mobi-systems.com).

Use the product registration form above to input the Unlock key and complete your Registration. To enter your Unlock key:

1. Go to Menu> **Help**> **Registration**.
2. Type in your **Unlock Key** in the space provided in Mobile Paint registration screen.
3. Tap on **OK** to continue or **Cancel** to abort the entry.

## *Online Registration of Products*

After the successful completion of an online purchase, you will receive a confirmation message for your order. In this message you will find link to online registration resources for your purchased products. Input the *Product ID* for the particular product in the corresponding field and click the [*ENTER PRODUCT ID*] button. Your *Unlock key* will be e-mailed to you shortly.

The screenshot shows a web browser window titled "Mobile-systems - Microsoft Internet Explorer". The address bar shows the URL: <http://www.mobi-systems.com/product-register.asp?KEY=767741C3C0389E503D025224F15CF9152443019D7FB4966699F03A7F263F9E>. The page features the "MobileSystems" logo and a navigation menu with links: News and Press, Reseller Area, Partners, Contact Us, Home, Products, Tech Support, Shopping Cart, and About Us. A search bar is present with the text "search" and a "Go" button. The main heading is "Product Registration Page". Below it, registration details are listed: Partner: Soft2Reg, Sales ID: 6581, Sales Date: 2003-12-04, and Customer Name: . The section "Products for registration in this sale." contains a table with columns: Product Name, Language, Product ID, and UnlockKey. The first row shows "MSDict Viewer and Explanation Dictionary (English)" with a Product ID field containing four empty boxes separated by dashes, and an UnlockKey field containing "NULL". Below the table is a button labeled "enter product ID". At the bottom, a section titled "What is Product ID and where to find it?" explains that the Product ID is specific to each product and is generated on the PDA after installation. It is a 16 or 24 symbol sequence, depending on the product (e.g., GRI1-AMDA-B055-WTV or B011AN-dNE44d-202071-Q6N71A).

Product Name	Language	Product ID	UnlockKey
MSDict Viewer and Explanation Dictionary (English)		<input type="text"/> - <input type="text"/> - <input type="text"/> - <input type="text"/>	NULL

**What is Product ID and where to find it?**  
The Product ID is not your order ID, not your Hotsync user name or device owner. The Product ID is specific for your copy of each product and is generated on the PDA after the program is installed. It is a 16 or 24 symbol sequence, depending on the product (e.g., GRI1-AMDA-B055-WTV or B011AN-dNE44d-202071-Q6N71A).

You can access the *Unlock keys* for your registered products at any time through the online registration form and also obtain second key in cases of PDA change.

---

Keep your purchase confirmation message since the link to the online registration resource is available only there. In case you lose the message, visit <http://www.mobi-systems.com/lost-registration.asp> and fill out the form provided to re-request the order confirmation message. The message will be resend to your e-mail address shortly.

---

# View Modes

When you start Mobile Photo Album, the *Browse* form will appear. The *Browse* form is an enumeration of all bitmap and jpeg image files located by the program on memory cards currently inserted in the PDA and Mobile PhotoAlbum native image files in the main memory of your Palm device and. The *Browse* also handles the management of your images allowing you to delete images and categorize files.

The *Browse* is available in four different view modes.



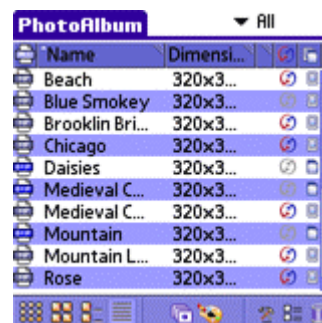
**Large Icons**



**Thumbnails**



**List**



**Info**



To switch between the view modes, use the following three icons from the toolbar.

Alternatively, You can change the *Browse* view mode as you tap **Menu > View > Large Icons, Thumbnail, List or Info.**

You can return to the *Browse* form at any time while you work in Mobile PhotoAlbum by selecting **Browse** option from the *File menu group*.

## The Info View

Through the *Info View* you can access detailed information for the image files currently recognized by the program. The form also gives you extra flexibility in managing your image files by allowing you to change the location where the file is saved and to specify whether it should be synchronized or not.



You can easily customize the columns and information that the *Info View* will show. By default the form shows the following columns in the order of their appearance:

- **Image type** – icon indicating the file type. Native Mobile PhotoAlbum files are shown with MP icon, Jpeg and bitmap files are shown with JPG and BMP icons.
- **Name** – the image file name
- **Dimensions** – the size of the image
- **Category** – the basic category with which the image is associated
- **Synchronization Preferences** - this column shows whether the image will be included in synchronizations. A gray HotSync icon indicates that the picture will not be synchronized. To change the synchronization status of a file, just tap the HotSync icon next to its name.

---

Please note that images that are placed on memory expansion cards cannot be synchronized. To transfer such files to your desktop computer, move them to the main memory of your Palm device.

---

- **Location** – the last column shows where the image file is saved- on memory card or in the main memory.

You can change the location of a file by simply tapping on its location icon. The icon will change and the file will be automatically moved to the default Mobile PhotoAlbum export directory on the memory card or vice versa- in the main memory.

Mobile PhotoAlbum allows you to remove columns from the *Info View* mode by dragging them out the view area. To do this, just hold the right up corner of the title bar for the column you want to remove and drag it outside the working area.

## File Formats

Mobile PhotoAlbum works with three different file formats. The files in native Photo Album format, also supported by Mobile Paint, can be stored only in the main memory of your Palm device. Whenever you modify an image it is temporarily converted to this format. Mobile PhotoAlbum also supports bitmap and jpeg images that can be uploaded on memory cards and accessed by the program directly from there.



To filter just the images from a selected file format, tap the icon from the upper left corner of the *Info View* and select format from the popup menu that will appear.

### ***Mobile PhotoAlbum images***


This is the native for Mobile PhotoAlbum format. All images in the main memory of your Palm device are in MP format. When you open an image from memory card it is also temporary converted to a MP file and modified that way. MP files have PDB file extensions on the handheld.

Files in MP format appear with  icon before their name in the *Info View*.

Mobile PhotoAlbum allows you to export images to memory card in MP format or as BMP files. For more details please read [Export Preferences](#).

### ***Bitmaps***

Mobile PhotoAlbum has a full support for Windows bitmap file, which includes ability to view bitmaps stores on memory cards, to export native MP file to card as bitmaps, and export/ import of bitmap to and from your Windows PC through the Mobile PhotoAlbum conduit.


Bitmaps appear with  icon before the file name in the *Info View* form.

To export an image to a memory card, just go to the *Info View* and tap the *location icon* for the file. Please note that in the [Export Preferences](#), BMP has to be specified as a default export format.

For details how to synchronize images with your desktop computer please read chapter [Synchronization](#).

## JPEG Files

In addition to the mentioned above formats, Mobile PhotoAlbum is capable of opening Jpeg images uploaded to memory card through the Palm Desktop Install utility, or made with the built-in camera on your PDA. However, if you modify such file, it will be saved in the native MP format.

Files in the JPEG graphic format appear with a  icon before the image name in *Info View*.

To allow you to view large JPEG files on the memory restricted Palm OS device, Mobile PhotoAlbum will give you the opportunity to create a smaller resized copy of the image and open the resized copy. Whenever you try to open a large JPEG file, Mobile PhotoAlbum will ask you whether to resize the image and open the reduced copy.

## Managing Categories

To improve the management of large lists of images and the image files organization, Mobile PhotoAlbum allows you to categorize images. The category list can be edited to meet your personal needs.

To view just the images from a specific category, tap the *category trigger* in the up-right corner of the *Browse Form* and select category from the popup list that will appear. Images unassociated to a category are considered as **Unfiled** and placed in this category.



To change a picture's category, select the image from the *Browse form* and then **Change Category** from the *File menu group*.

To edit the categories list, tap the *category trigger* and select **Edit Categories...** from the popup menu that will appear. The following form will show, which allows you to create new categories, and rename or delete existing ones.





# Viewing and Managing Images

## Open

To open an image file, double-tap its name or thumbnail depending on the *Browse View mode* that you use. The image will be opened in *full screen mode*. The image will be opened and automatically resized to fit to the full screen resolution of your Palm device.



To return to the *Browse View*, select **Browse** from the *File menu* or just tap within the image.

## Image Info

To view detailed information about image, open it and select **Info** from the *File menu*.

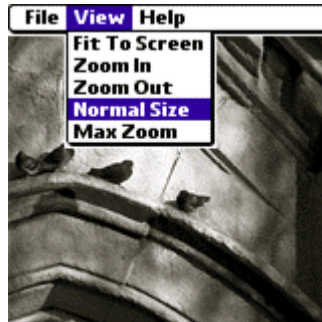


The *Info Form* shows extended information about the image as its dimensions, the date of its creation and location where the actual file is stored- memory card or the handheld itself.

## Zoom

Mobile Photo album allows you to zoom images up to 20 times. To zoom in an image:


1. Open the image.
2. Select the zoom option that you wish by the *View menu*.



- Fit To Screen – the currently opened image will be resized to fit in the screen.
- Zoom In
- Zoom Out
- Normal Size- the image will be restored to its actual size
- Max Zoom- the image will be enlarged to maximum supported zoom so you can view even the slightest details.

## Slideshow

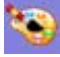
The Slideshow mode allows you to view the images from the current category in a row. The images in the slideshow will be resized by the program to fit to the maximum resolution of your device's screen. To start a slideshow:

1. Select a category whose images you want to be included in the slideshow from the categories popup menu in the up right corner of your screen.
2. Tap the  icon from the toolbar or select **Slideshow** from the *File menu* group.

To stop the slideshow, just tap on the image that is currently on the screen.


## Edit

Mobile Photo Album is compatible with Mobile Systems' advanced painting application Mobile Paint. This compatibility allows you to modify your images when Mobile Paint is installed. Mobile Paint supports over 20 painting tools and can be downloaded from [www.mobi-systems.com](http://www.mobi-systems.com). To open a image file in Mobile Paint:

1. Select an image from the *Browse View*.
2. Tap the  icon from the toolbar. Mobile Paint will be launched and the image opened in it.
3. When you start editing the image in Mobile Paint, save it and tap **Exit/ Back** from the main menu.

## Delete

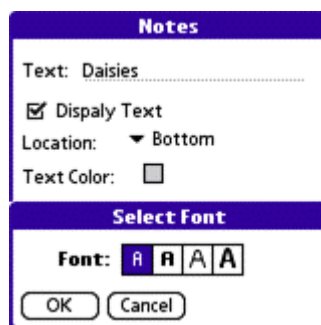
To delete an image:

1. Start Mobile PhotoAlbum and select the image from the *Browse View*.
2. Tap the  icon.
3. The program will ask you to confirm the deletion. Tap **OK** and the image will be deleted from your handheld.

## Notes

The notes option allows you to assign text to each image file and show the text when image is opened or shown in slideshow mode.

To open the *Notes settings*, open the desired image and then select **Notes** from the *File menu*.




1. Type in the text you want to appear in the image in the **Text** edit box.
2. Enable the check box for **Display Text** if you want to make the text visible.


3. Specify location **Bottom** or **Top** in the **Location** option.
4. Select color to be used for the text from the *Color Pick form* that will appear when you tap the color box next to the **Text Color** option.
5. By default Mobile PhotoAlbum will use transparent color for background of the text. If you want to assign a different background color, enable the check box for **Use Background Color** and specify the background.
6. To change the font style for the note, tap the **Font** button. Select font style between Normal, Bold, Italic, and Bold Italic. Tap **OK** to confirm the changes and close the *Select Font* form.
7. Tap OK to save the Notes form and apply the changes.

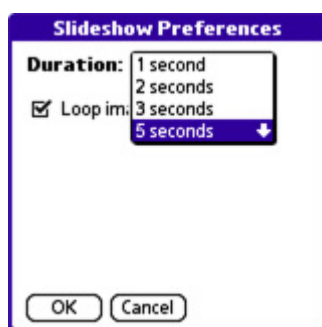
# Preferences

## Slideshow

Mobile PhotoAlbum allows you to view the images in the currently selected directory in a slideshow. To switch to slideshow, just tap select the desired directory from the *categories popup menu* and tap the  icon.

In addition the program gives you the opportunity to specify the time for which each image is shown in the slideshow and whether the images should be rotated more than once.


To open the slideshow settings dialogue, just tap the  icon from the toolbar while you are in *Browse View*.



To change the duration for which an image is shown, just tap the menu trigger for the corresponding field and select value from the popup menu.

If you want the images to be rotated more than once, enable the check box for **Loop Images**.

## Browse Views

Mobile PhotoAlbum preferences are accessible through the **Customize** item in the *View menu group* while you are in the *Browse* form. The *Browse View* preferences can also be opened through the  icon from the toolbar.

The preferences are separated in three basic groups depending on the functions that they utilize- *General Preferences*, *Card Preferences*, *Info Preferences* and *Export*

*Preferences*. To switch between the different preferences groups, use the popup menu trigger in the upper part of the form.

The 'Customize' dialog box has a title bar 'Customize' and a dropdown menu showing 'General Preferences'. Below the title bar, there is a section 'Progress Bar:' with three options: 'Trotting Bug' (checked), 'Standard' (unchecked), and 'No Progress Bar' (unchecked). At the bottom, there are three buttons: 'OK', 'Cancel', and 'Apply'.

**General Preferences**

The 'Customize' dialog box has a title bar 'Customize' and a dropdown menu showing 'Export Preferences'. Below the title bar, there is a section 'Export Directory:' with a text field containing '/Mobile PhotoAlbum' and a 'Change' button. Below that, there is a section 'Export Bitmaps As:' with a dropdown menu showing 'bmp'. At the bottom, there are three buttons: 'OK', 'Cancel', and 'Apply'.

**Export Preferences**

The 'Customize' dialog box has a title bar 'Customize' and a dropdown menu showing 'Card Preferences'. Below the title bar, there is a section 'Browse Everywhere' with a checked checkbox. Below that, there is a section 'Default Browse Directory:' with a text field containing '/' and a 'Browse' button. Below that, there is a section 'Search for Images on Memory Card:' with two options: 'When Card is Inserted' (checked) and 'On Startup' (unchecked). At the bottom, there are three buttons: 'OK', 'Cancel', and 'Apply'.

**Card Preferences**

The 'Customize' dialog box has a title bar 'Customize' and a dropdown menu showing 'Info Preferences'. Below the title bar, there is a section 'Info Preferences' with two columns of options. The first column has 'Name' (checked), 'Dimensions' (checked), 'Category' (checked), 'Depth' (unchecked), 'Density' (unchecked), and 'Path' (unchecked). The second column has 'File Size' (unchecked), 'Compression' (unchecked), 'Created' (unchecked), 'Modified' (unchecked), 'Version' (unchecked), and 'Card Name' (unchecked). Below these options, there are two checked checkboxes: 'Show Import/Export Icon' and 'Show HotSync Icon'. At the bottom, there are three buttons: 'OK', 'Cancel', and 'Apply'.

**Info Preferences**

## ***General Preferences***

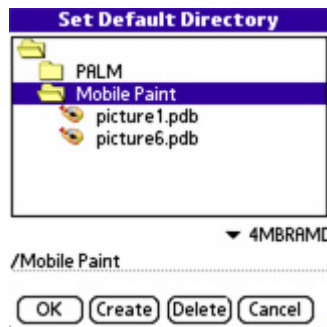
Through the General Preference you can modify the type of the progress bar that is shown when images are loaded in the *Browse View* modes or when image is opened.

Enable the check box for the progress bar type that you want to use.

## ***Export Preferences***

### **DEFAULT EXPORT DIRECTORY**

The *default export directory* is the folder on your memory card to which Mobile PhotoAlbum copies images when you choose to move them to an expansion card. Whenever you select to transfer an image to memory card through the *Info Browse* the file will be moved to the *default folder* for the moment. To change the default folder, open the *Customize form*, switch to *Export Preferences* and tap the **Browse button** next to **Export Directory**.



Select the new directory and tap **OK**.

To create a new directory on the memory card, type in the full name and path for the directory in the text field provided in the down part of the *Set Default Directory* form and tap the **Create** button.

To delete a directory on the memory card, select the directory and tap the **Delete** button from the down part of the form. Please note that only empty folders can be deleted.

### EXPORTED IMAGES FORMAT

Through the Export Bitmaps popup menu in the *Export Preferences* you can specify whether images exported to memory cards should be saved as native MP files with PDB file extensions or as bitmaps with BMP extensions.

After you select option depending on your personal needs, tap the Apply button to save the changes.

## Card Preferences

Through the *Card Preferences* you can change the default browse directory that the program works with when images are stored on memory cards.

### DEFAULT BROWSE DIRECTORY

This is the directory on your memory card whose images are shown by default in the *Browse View* when you start Mobile PhotoAlbum. The searching for images on memory card can slow the performance of the program. Consequently we recommend that you set the *default browse directory* to be the same as the *export directory*.

The *browse directory* can be changed in the same way as described in the previous chapter as described in [Default Export Directory](#).

## SEARCH IMAGES ON MEMORY CARD

Through this option you can specify when Mobile PhotoAlbum should search for JPEG and BMP native images on memory card. The two options are- when card is inserted or on start up. Enable the check box for the option that you prefer.

## *Info Preferences*

The *Info Preferences* form allows you to specify the image information to be shown in the Info mode in *Browse View*.

The Info mode can display the following information about image files: **Name**, **Dimensions**, **Category**, **Depth**, **Density**, **Path**, **File Size**, **Compression**, and dates when the image was **Created** or **Modified**. Enable the check box for each property you would like to be shown in *Info Browse mode*.

Through the *Info Browse mode* Mobile PhotoAlbum allows you to view and modify the location where an image file is saved- the main memory or memory card- and the synchronization preferences for each image. In case you do not want these settings to appear in the *Info View*, disable the checkboxes for **Show Image Location** and **Show Sync Preferences**. The corresponding column will no longer be shown in the *Info View*.

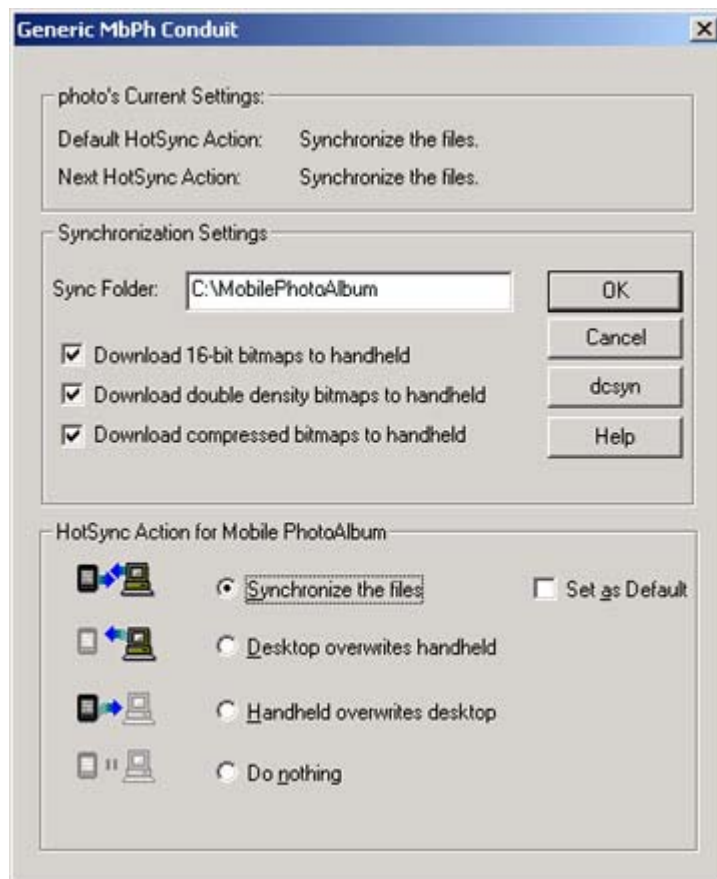
To save the changes in *Info Preferences* make sure you have tapped **Apply** before you exit to *Browse View*.



# Transferring pictures to and from your desktop computer

Mobile PhotoAlbum has the unique feature to transfer your desktop pictures to your PDA and then return them back. The transfer is made through an additional Palm conduit, which is added to HotSync when you install Mobile PhotoAlbum. The conduit is available for Windows running desktop computers and does not support Mac OS computers.

Mobile Photo 2004 conduit is accessible when you right-click the **HotSync icon** in the system tray and then select **Custom**. Find Mobile Photo 2004 conduit in the list of available Palm conduits and click **Change**.



# Mobile Photo Album Conduit settings

## *Sync Folder*

The supported graphic format for Mobile Photo Album Conduit is Windows bitmap (bmp). After synchronization, all bmp files in the **Sync folder** will be transferred from the PDA to your desktop computer, from the desktop to PDA or synchronized in both directions depending on the chosen action for the conduit.

The **default Sync Folder** is C:\MobilePhotoAlbum but you can change the folder at any time by starting Mobile PhotoAlbum conduit as described above, clicking the **Set Folder** button and selecting existing folder on your computer, that you want to use for the next synchronization. If you want to change permanently the sync folder, enable the **Set as default** checkbox in the conduit main window.

## *Picture quality settings*

Mobile PhotoAlbum supports double density and 16-bit pictures qualities. These type of image files require more storage space so to prevent from overloading your PDA, Mobile Photo conduit has the function to allow or deny the synchronization of such pictures.

- To allow **double-density pictures** loading on your Palm enable the check box for **Download double density bitmaps to handheld**.
- In the same way, to allow the 16-bits pictures transfer, enable the check box for **Download 16 bit pictures to handheld**.
- Mobile PhotoAlbum support images compression on the handheld device. To allow images from the desktop computer to be loaded in so save storage space on the handheld, enable **Download compressed images to handheld** check box.

## HotSync Actions

Mobile PhotoAlbum conduit supports the following synchronization actions:

### *Do nothing*

Set Mobile PhotoAlbum conduit to this action when you don't want to transfer any pictures. The conduit will not transfer pictures, no matter what files the sync directory contains.

## ***Desktop Overwrites Handheld***

All bitmaps from the Sync Folder are taken and transferred to the PDA. If pictures with the same names exist on the handheld they will be lost and overwritten by the files in the desktop sync folder.

## ***Handheld Overwrites Desktop***

All pictures from Mobile Paint are taken, transferred to Windows bitmaps and saved in the Sync Folder. If the folder contains files with the same names, the pictures from the handheld will overwrite them.

## ***Synchronize the files***

Mobile PhotoAlbum conduit will check if the *Sync folder* contains new bitmaps that have not been transferred to the PDA before and upload them to the Palm device. All images on the handheld with file names that do not exist in the *Sync Folder* will be transferred to bitmaps and saved in the *Sync Folder*.

---

Note: To prevent from losing your files, images with the same file names that exist both in Mobile PhotoAlbum and in the Sync Folder on the desktop computer will not be synchronized.

---