



PalmarySoft

Qualifications Save Explanations

PalmaryClock

Original multifunctional clock with skins support

Version 2.1

User's Manual

April 2004

Table of contents

TABLE OF CONTENTS	1
DESCRIPTION	3
DOWNLOADING	4
INSTALLATION	5
PURCHASE AND REGISTRATION.....	6
REMOVAL	7
PALMARYCLOCK QUICK REFERENCE.....	8
PALMARYCLOCK MENU	8
CLOCK VIEW	8
CALENDAR VIEW.....	9
ALARMS VIEW	10
TIMERS VIEW	13
REMINDER SCREEN	14
STOPWATCH VIEW	15
WORLD TIME VIEW	16
WORLD MAP VIEW	17
TIME UTILITIES VIEW.....	19
Sunrise	19
Internet Time	20
Time Calculator	20
PREFERENCES FORM	21
General Preferences	21
Clock Preferences.....	22
Calendar Preferences	25
Timers Preferences.....	26
Stopwatch Preferences	27
World Map Preferences.....	28
EDIT CITIES FORM.....	29
REGISTRATION FORM.....	31
PALMARYCLOCK BASICS.....	32
SKINS	32

BACKGROUNDS	34
PALMARYCLOCK GETTING STARTED	36
SYSTEM MANAGEMENT	36
WORLD TIME	38
INTERNET TIME	39
FREE USE AND REGISTRATION.....	41
SKIN MANAGEMENT	42
DOWNLOAD SKIN	42
CREATE NEW SKIN	42
SYSTEM REQUIREMENTS.....	43
REVISION HISTORY.....	44
TROUBLESHOOTING	45
CONTACTS	47

Thank you for downloading this program!
You can freely use **Palmary**Clock during 21 days.
Please, visit our site www.palmarysoft.com for more info.

Description



PalmaryClock is a multifunctional clock of variable design. It can be transformed in either classical, digital or alarm clock, watches or calendar according to your wishes. Our aim was to develop stylish clock that will be «gratifying to the eye». And it seems to us, we have succeeded in it. It is dead certain you have never seen such graphic on Palm platform! Great numbers of skins we have developed for PalmaryClock allow you to design clock according to your likes. You can also create new skins by yourself. It is possible to use digital photos for creating skins, including those taken with your digital camera. We have worked a lot to make the advanced graphics not slow down the program. PalmaryClock reacts immediately to all your commands. Even on the old devices not more than a second will

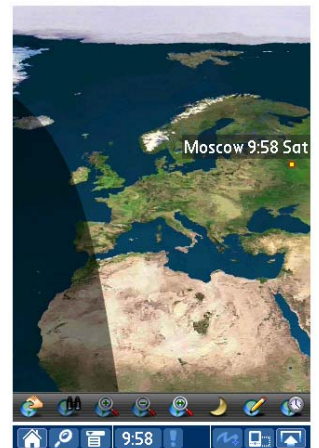
pass from the program start, and clock will appear on your Palm-organizer screen showing the current time. PalmaryClock has functionality of the best computer clocks. You can control all time and date parameters. The time is displayed precisely to one second. Date Manager makes it possible to form calendar for any year, from 1910 to 2030.

Alarm Manager will always remind you about an important appointment or your friend's birthday. You can set unlimited number of alarms for the next hour, day, month or year. Timer manager will help you to manage your routine tasks.

All sportsphiles will size up the new Stopwatch manager.

WorldTime Manager will be a reliable companion in a travel informing you of the local time. It can show you time in about 550 cities of the world! And WorldMap Manager will visually show you the world time information. Moreover, in case your city is absent in the list, you can easily add it.

Our new Time Calculator will help to precise the time for any small corner of the world. Now you will be able to convert the standart time to the INTERNET time and vice versa for any city of your choice.



We will be very glad if you will like and use our program.

[Table of contents](#)

Downloading

PalmaryClock program is distributed in archive zip format. You can download the zip file from www.palmarysoft.com/download. After the download you should unpack the archive file into any temporary folder. Use the [WinZip](#) program for it.

Installation

To have PalmaryClock in your Palm-organizer install all PRC and PDB files into it. To install a file, simply double click on it. Box named Install Tool will appear. Inside this box, you will see a white area, which should contain the name of the file you wish to install. Click the Done button and HotSync your Palm. HotSync will now copy the software across and installation is complete.

Purchase and Registration

You can freely use the full functional trial version of PalmaryClock during 21 day. Then you will have to choose: to purchase the program or to remove it from your Palm-organizer. If you decide to buy PalmaryClock, visit www.palmgear.com. Here you can register and purchase the program.

Removal

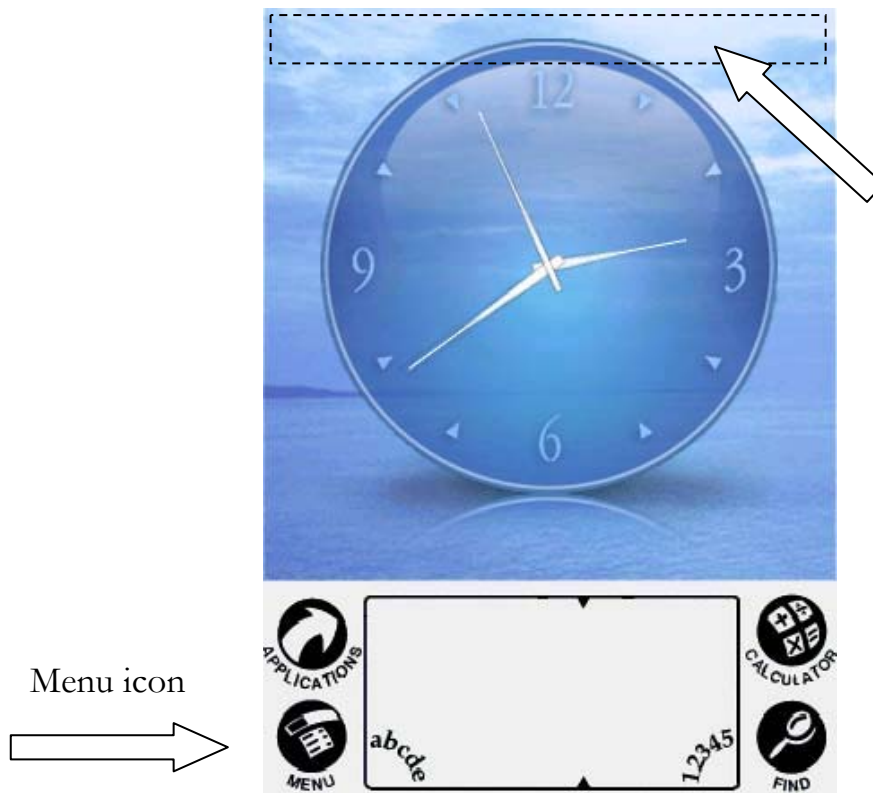
Removing PalmaryClock is easy. If you use any of the third party launchers (like Silverscreen, Zlauncher etc.), exit it. Use the Delete command of App Menu to remove the program: select PalmaryClock in the list of programs installed into your Palm-organizer and tap the Delete button.

PalmaryClock Quick Reference

PalmaryClock program has eight modes: Clock, Calendar, Alarms, Timers, Stopwatch, World Time, World map, Time Utilities. When PalmaryClock is started for the first time, it runs in the Clock View mode. After this, each time started, PalmaryClock runs in the mode specified at PalmaryClock General Preferences.

PalmaryClock Menu

To call PalmaryClock menu tap either on menu icon or onto the top of PalmaryClock screen.



Clock View

This is a simple view. Only clock and background are displayed on your handheld screen.

[Table of contents](#)

Calendar View

PalmaryClock offers you calendar for all the years from 1904 to 2031.



You can always see here the current date (according to the system clock) and current time. Time on this clock is renewed once a minute.

In the left column you can see week number (if count from the year beginning). The current date is selected.

You can use these buttons to see calendar for any month of any year. Today button will anytime return you to the current date after surfing through calendar.

If your handheld has Left – Right navigation buttons, it is possible to use them for quick surfing. Press the Left button to see calendar for the previous month and the Right button to see calendar for the next month.

You can use Page Up – Page Down buttons to change the background image.

Note: performing this operation will change the background image also of the Clock View.

Alarms View

This mode will help you to do everything (and to be everywhere) in time. All active alarms are ticked. If you do not want to delete an alarm, but deactivate it for a time, just unmark the alarm.

Alarm Name	Time	Frequency	Status
good morning	7:15 am	every day	checked
parents(visit)	8:00 pm	every week	unchecked
gym	6:15 pm	every week	checked
birthday john	2:18 pm	on 20.3 of every year	checked

New – opens the New Alarm form; now you can add a new alarm.

Edit – opens the Edit Alarm form; it allows you to edit and delete alarms from the list. To edit an alarm, tap its name in the list, then tap Edit button.

You can edit or create a new alarm using Edit alarm and New Alarm forms.

◀ 2004 ▶						
Jan	Feb	Mar	Apr	May	Jun	
Jul	Aug	Sep	Oct	Nov	Dec	
S	M	T	W	T	F	S
	1	2	3	4	5	6
7	8	9	10	11	12	13
14	15	16	17	18	19	20
21	22	(23)	24	25	26	27
28	29	30	31			

Choose Time			
8	:	00	AM
OK Cancel			

Time – sets the time of the alarm.

Date – sets the date of the alarm.

Today – marks the current date.

OK – saves changes and exit the form

Cancel – exits the form without saving the changes

Alarm Repeat – using this list, you can set the periodicity of the alarm.

Here some variants are possible:

New Alarm

Time: 5:06 pm
Date: Mar 22, 2004

Repeat: ▼ Once
Remove after ring: ☒

Sound: ▼ Alarm
Repeat: ▼ once **Every:** ▼ 2 sec
Note: call Mr. Smith

Edit Alarm

Time: 7:45 am
Date: Mar 23, 2004

Repeat: ▼ Hourly
Every: ▼ 2 hour(s)
From: 8:00 am **To:** 5:00 pm

Sound: ▼ Alarm
Repeat: ▼ 5 **Every:** ▼ 2 sec
Note: check email

Edit Alarm

Time: 6:15 pm
Date: Mar 20, 2004

Repeat: ▼ Weekly
Every: ▼ 2 week(s)
On: S M T W T F S

Sound: ▼ Alarm
Repeat: ▼ once **Every:** ▼ 2 sec
Note: gym

Once – the alarm will ring once at selected time of selected date.

Tick **Remove after ring** to remove the alarm after it rings.

Hourly – the alarm will be repeated with the interval set by you.

From – sets the beginning of the time interval of the alarm.

To– sets the ending of the time interval of the alarm.

Daily – the alarm will signal every day at selected time

Weekly – you can choose some or all weekdays for the alarm.

On – sets the particular weekdays for the alarm.

Monthly – the alarm will signal every month at selected time and day

Yearly– the alarm will signal every year at selected time and date

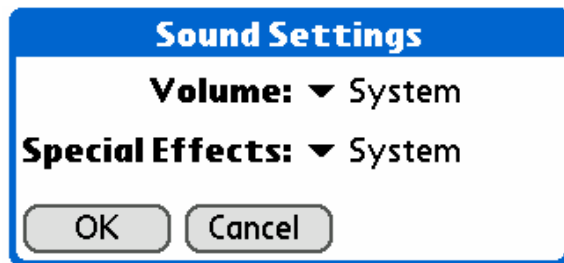
Sound – you can select the sound for your alarm.

Setup – you can specify the volume and special effects settings for the particular alarm.

Volume –You may use for the selected alarm the System Sounds setting, change it to Low, Medium or High volume, or turn it off (Silent).

Special Effects –You may use for the selected alarm the System Alerts settings, activate LED, VIBRATE or both or turn them off (None).

These settings are valid only for the selected alarm! The OS settings are not changed!

A screenshot of a 'Sound Settings' dialog box. The title bar is blue with the text 'Sound Settings' in white. The main area has a white background. It contains two labels with dropdown menus: 'Volume: ▼ System' and 'Special Effects: ▼ System'. At the bottom, there are two buttons: 'OK' and 'Cancel', both with a light gray gradient and a thin border.

Repeat – set the number of signal's repetitions (up to 25 times) for a particular event.

Every – sets the time interval between alarm's repetitions.

Note – here you can write a note. It will be displayed on the Reminder screen

OK – saves changes and exit the form

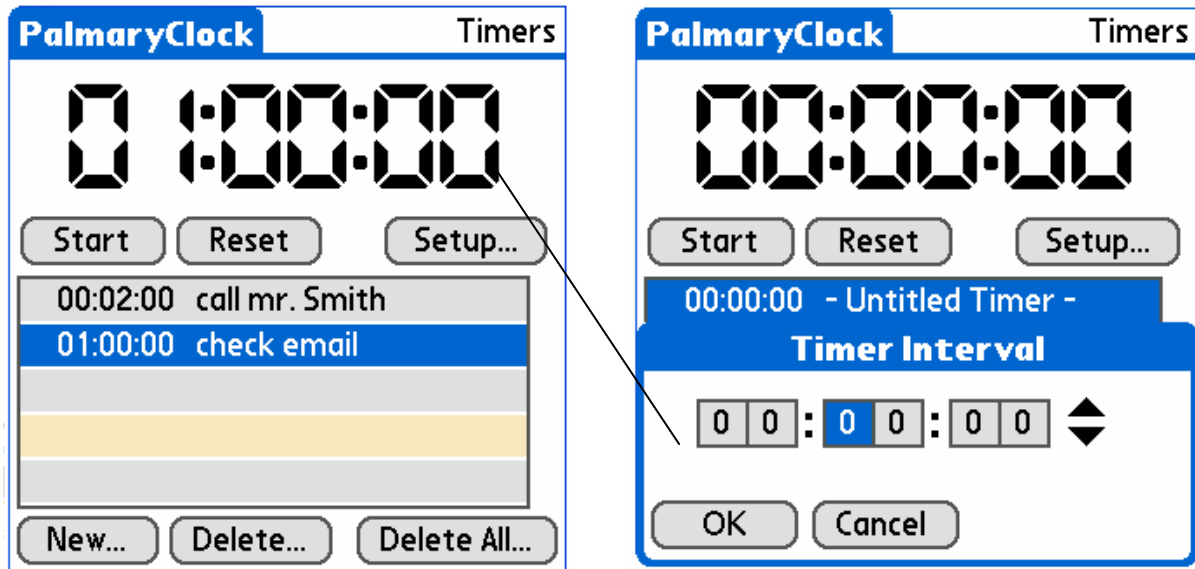
Cancel – exits the form without saving the changes

Delete –deletes the alarm.

Timers View

This mode will help you not to forget small fries. You can set at the same time as many different timers as you need.

Tap the digits for easy start of an untitled Timer (enter the Timer Interval only!)



Start – starts the countdown.

Reset – resets the timer to the reference value.

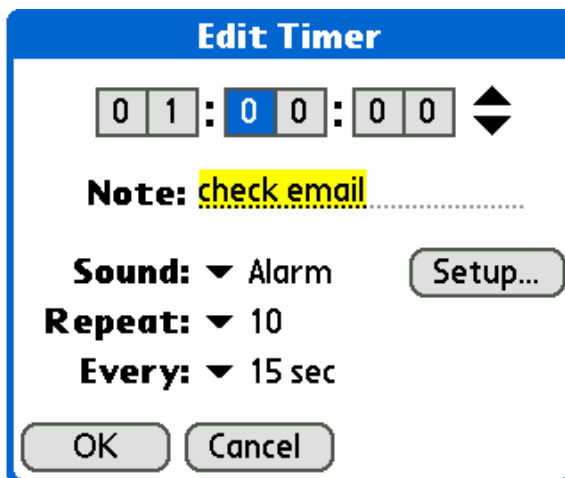
New – opens the New Timer form; now you can add a new timer

Delete – deletes the timer

Delete All – deletes the timer list with all timers.

To edit a timer, tap its name in the list, then tap Setup button.

Setup – opens the Edit Timer form; it allows you to edit a timer.



Note – here you can write a note. It will be displayed on the Reminder screen.

Sound – you can select the sound for your timer.


Setup – you can specify the volume and special effects settings for the particular timer. You can refer to the Alarms view for more details about the volume and special effects settings.

Repeat – set the number of signal's repetitions (up to 25 times) for a particular event.

Every – sets the time interval between signal's repetitions.

Reminder Screen

12:10 am Reminder
PalmaryClock Alarm



12:10 am
Mar 29, 2004
- Untitled Alarm -

OK Snooze Go To

This form appears together with alarm signal. It contains standard information about date, time and note for the alarm.


It also contains the name of the mode that has been snapped into action.

Tap **OK** to exit alarm form and return to the application that was active before the alarm signal.

Tap **Snooze** button to repeat the signal in a short period of time

Tap **Go To** to launch PalmaryClock.

12:08 am Reminder
PalmaryClock Timer



12:08 am
Mar 29, 2004
- Untitled Timer -

OK Snooze Go To

Stopwatch View

This mode will help you to note the time. You can manage a single or all (10) stopwatches at the same time.

PalmaryClock ▼ Single

1 2 3 4 5 6 7 8 9 10

3/24/04 1:02 am Stopwatch #1

00:00:00.00

Lap	Split time	Lap time
#1		00:00:00.00

Start Reset Start All Reset All

Start – starts the chosen stopwatch.

Reset – resets to zero.

Reset All – resets all stopwatches to zero.

Start All – starts all the stopwatches simultaneously.

This field shows the name of the current stopwatch. You can rename any stopwatch you want. Tap the field and enter your name.

OK – save changes and exit the form


Cancel – exit the form without saving the changes.

Default – returns to the stopwatch it's default name.

Edit Note

my horse

OK Cancel Default

The sign  marks the stopwatch in use.

Split – shows an intermediate result without stopwatch stopping.

PalmaryClock ▼ Single

1 2 3 4 5 6 7 8 9 10

3/24/04 1:30 am my horse

00:00:24.24

Lap	Split time	Lap time
#3		00:00:07.18
#2	00:00:17.06	00:00:14.22
#1	00:00:02.84	00:00:02.84

Stop Split Start All Reset All

PalmaryClock ▼ All

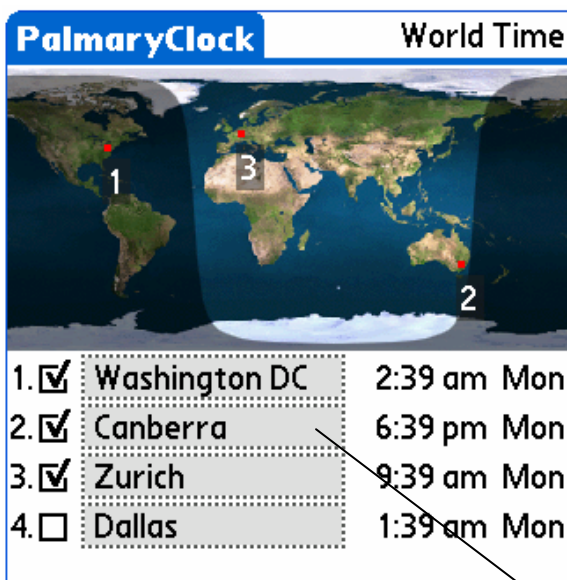
00:00:18.47	St Sp	Stopwatch #1
00:00:00.00	St R	Stopwatch #2
00:00:16.87	St Sp	Stopwatch #3
00:00:00.00	St R	Stopwatch #4
00:00:12.12	St Sp	Stopwatch #5
00:00:14.98	St Sp	Stopwatch #6
00:00:00.00	St R	Stopwatch #7
00:00:00.00	St R	Stopwatch #8
00:00:00.00	St R	Stopwatch #9
00:00:00.00	St R	Stopwatch #10

[Table of contents](#)

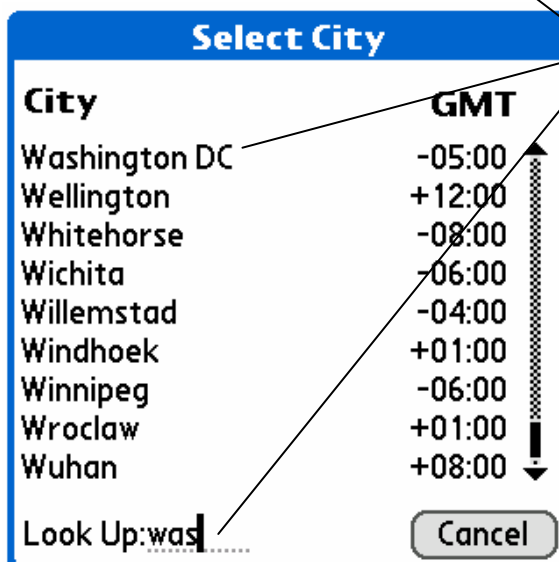
World Time View



The first time World Time view started, you will see the following message. PalmaryClock uses date and time settings of the OS. That is why it is very important to check DST setting of the Palm "DATE AND TIME" Preferences.



This screen gives you the world time information. You can easily change the list of the cities. Time displaying format is defined by your handheld settings. The cities ticked off on the list are marked on the map.

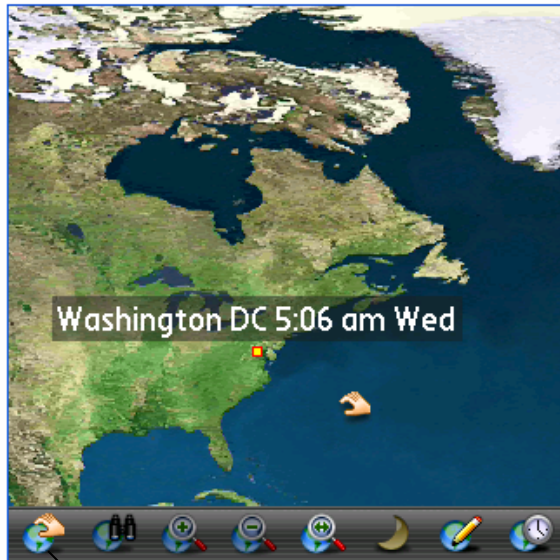


To change the city simply tap it. Use **Look Up** to enter several first letters to facilitate the navigation through the Select city list.

[Table of contents](#)

World Map View

PalmaryClock offers you a unique easy to use World map.



The icon in use stands out against the background.



Navigation icon – tap it and the map will follow any movement of your stylus on the screen.



Find icon – tap it and then tap the screen to highlight the nearest city.



Zoom In icon – tap it and then tap the screen to zoom in. Magnification factor depends on the map.



Zoom In icon – tap it and then tap the screen to zoom in. Magnification factor depends on the map.



Fit to screen icon – tap it to fit the size of the map to the screen.



Daylight icon – tap it to highlight the day and night area on the map.



Find city icon – tap it to highlight the desired city on the map. You will see the Select city form. Tap the desired city. You can refer to the World Time View form for more details about Select city form.



World time icon – switches to World Map view.

Time Utilities View

Using this mode you can find out sunrise and sunset time for any place and date. Default sunrise and sunset time is for your home city and current date. You can also get the information on Internet Time and Calculate the time in several cities of your choice.

Sunrise

PalmaryClock		Time Utilities
Local Time: 11:31 pm		
Internet Time: @855		
Sunrise	Internet Time	Time Calc
Date: 4/9/04		
Set Location: ▼ By City		
City: Moscow		
Sunrise at 6:39 am Sunset at 8:24 pm		

Date –sunrise and sunset date. Just tap it to change.

Set location – here select the place, for which sunrise and sunset information should be displayed. If Set location is in **By city** mode, just select the needed city from the City list.

City – here you can select a city from PalmaryClock database.

If **Set location** is in **Manual** mode, you can enter the location manually. In this case Sunrise View takes the following form.

PalmaryClock		Time Utilities
Local Time: 12:31 am		
Internet Time: @897		
Sunrise	Internet Time	Time Calc
Date: 4/10/04		
Set Location: ▼ Manual		
GMT Offset: +5 : 0 ◆		
Location: 0°0' S, 0°0' E		
Sunrise at 10:58 am Sunset at 11:04 pm		

GMToffset – local time offset from GMT in the place for which sunrise and sunset time is calculated.

Location – geographical coordinates of the place for which sunrise and sunset time is calculated.

Internet Time

You may enter Standart time to calculate Internet time and vice versa for any city of your choice.

PalmaryClock		Time Utilities
Local Time: 12:40 am		
Internet Time: @903		
Sunrise	Internet Time	Time Calc
City:	Moscow	
Standard Time:	12:39 am	
Internet Time:	@903	

Time Calculator

PalmaryClock		Time Utilities
Local Time: 12:22 am		
Internet Time: @891		
Sunrise	Internet Time	Time Calc
When it is	12:19 am	
in	Moscow	
in	London	9:19 pm Day Before
in	Nice	10:19 pm Day Before
in	Tokyo	5:19 am Same Day
in	Washingto...	4:19 pm Day Before

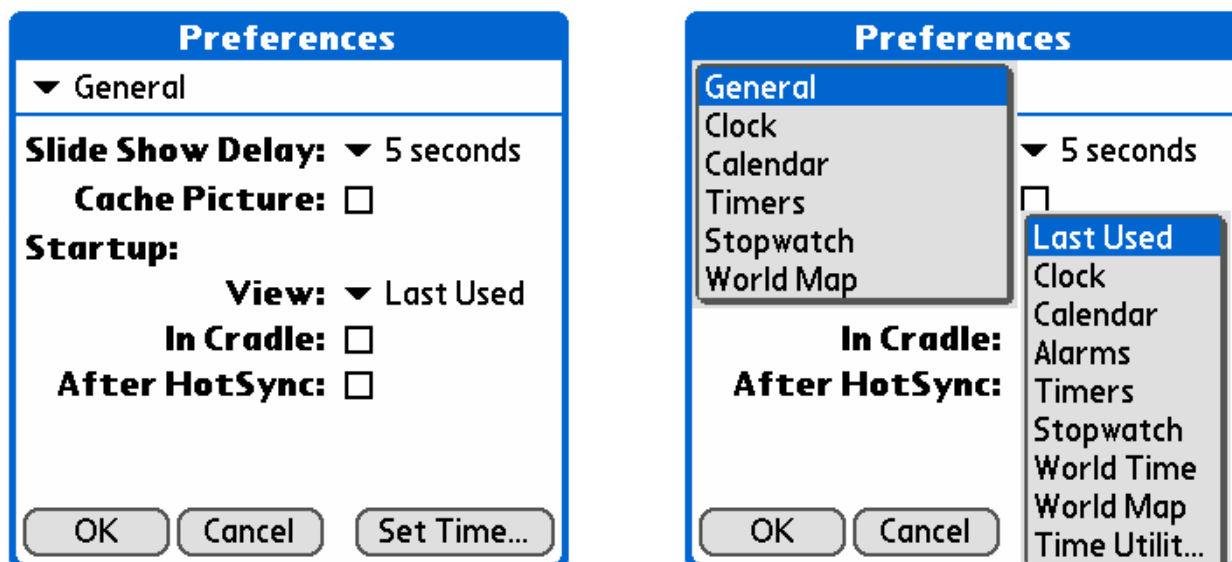
Simply enter the time and the place and your Time Calculator will give you the information on the cities you have selected.

[Table of contents](#)

Preferences Form

To call the Preferences Form you should select menu Options/Preferences. The Preferences Form allows changing the general program settings. There are six groups of settings: General preferences, Clock preferences, Calendar preferences, Timers preferences, Stopwatch preferences, World Map preferences. To change groups simply choose a desired item in the pop-up menu.

General Preferences



Cache picture – enable the mode of image caching. If the mode is enabled, program loads with considerably higher speed.

Startup: in cradle – if this function is enabled, PalmaryClock will start automatically each time inserted into cradle.

Startup:

View – Specify the View to start with. PalmaryClock can start with the last used view or with any of your choice.

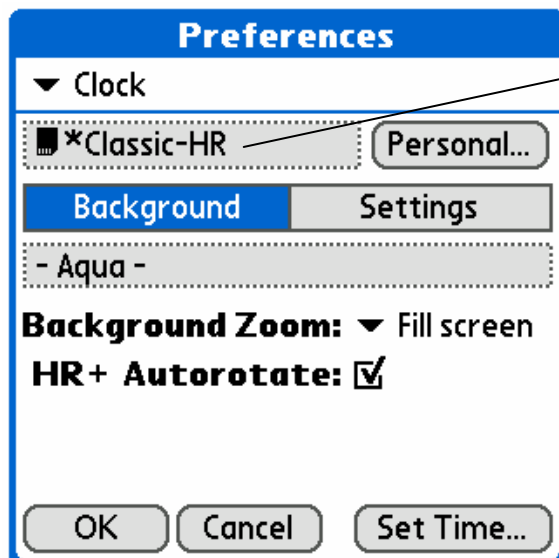
After HotSync – if this function is enabled, PalmaryClock will start automatically each time after performing HotSync operation.

Slide show delay – delay setting for Slide Show mode of skins and backgrounds.

To enable the Slide Show mode you should use Select skin or Select background forms.

Set Time – exits PalmaryClock and opens DATE & TIME Preference Form of your OS.

Clock Preferences



Here you will see the name of the current skin. You can change skin or enable the Slide Show skin mode. To change current skin, tap its name and select another skin from the selection window. Tap **Personal...** to change the personal skin settings.

HR+ Autorotate – for handhelds with screen resolution of 320x480 or 480x320 pixels enabling this mode allows rotating image when forming background in order to fit the screen.

Background Zoom – zoom settings for background picture:

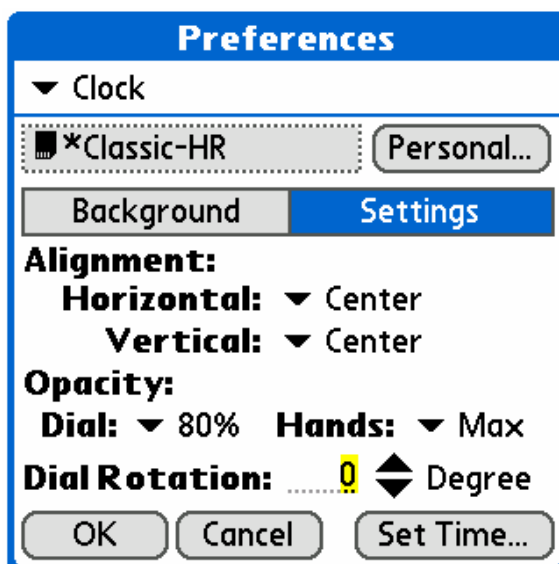
Fill screen – stretch picture to full screen.

Fit screen – stretch picture to fit screen.

Background – here you will see the name of the current background. Besides this, here you can also change the current background or enable the Slide Show mode for background. To change current background, tap its name and select another from the list.

Tap **Settings** to change clock settings.

The sign * marks that the personal skin or background settings are applied. All changes in this form will have no effect!



Alignment settings define skin location on the screen. There are variants of horizontal and vertical skin alignment:

Horizontal:

Predefined – alignment is defined by skin itself.

Center – flush center

Left – flush left

Right – flush right

Vertical:

Predefined – alignment is defined by skin itself.

Top – flush top

Bottom – flush bottom

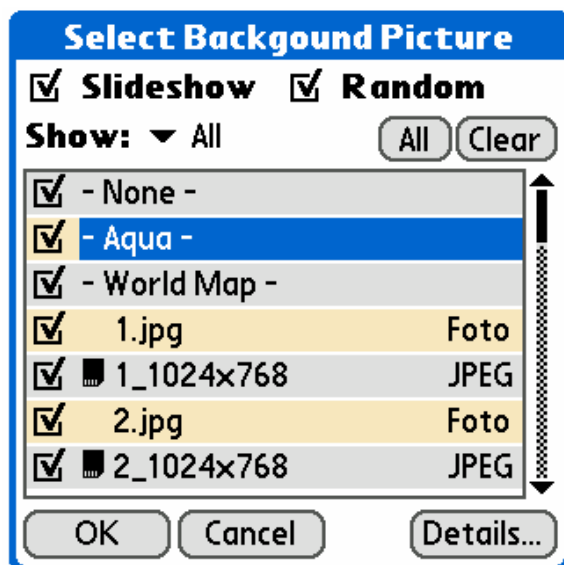
Opacity – sets the transparency of skin elements:

Dial – defines the visibility of digital or analog clock.

Hands – defines the visibility of hands on analog clock and digits on digital clock.

Dial rotation sets the angle of clock rotation. You can either enter the value of turn angle into the enter field or use Up/Down buttons.

The changes will have no effect if Use Personal Skin Settings function is activated!



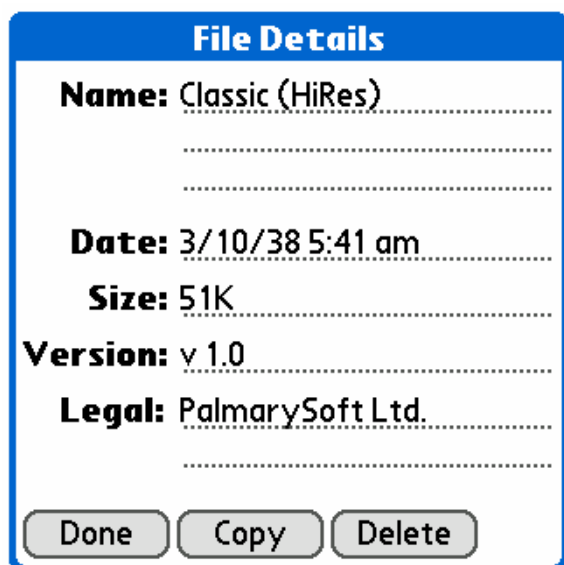
Slideshow – Activates slideshow mode for skins or backgrounds.

Random – Switch on random selection of pictures or skins for slideshow.

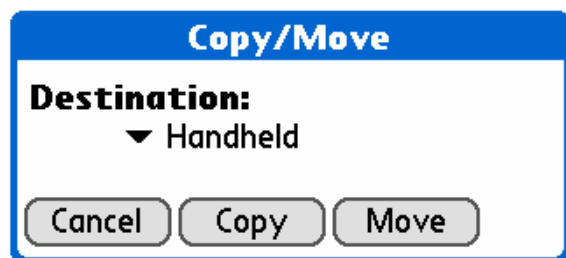
Note: Slide Show mode is realized separately for skin and for background, i.e. you can change skin without changing background.

Details – Shows window with information about selected file and allow to user perform operations with file like copy, move, delete.

Note: this function is unavailable for the Built-in skins, backgrounds and maps.



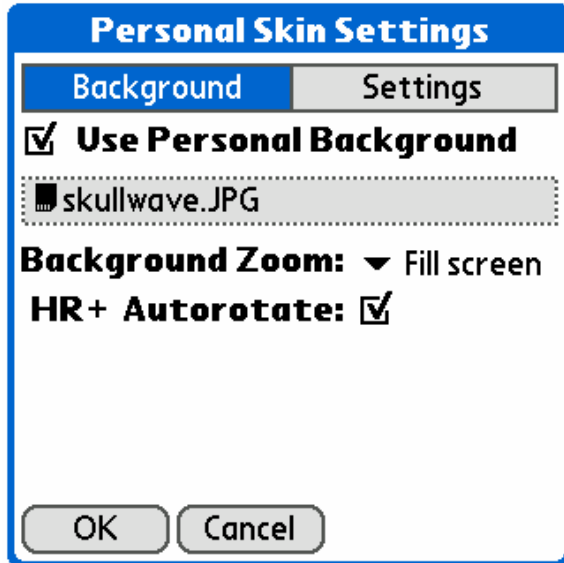
Done –exits the form.



Copy – You can **Copy** or **Move** the selected file to the destination of the pop-up menu.

Delete – deletes the current file.

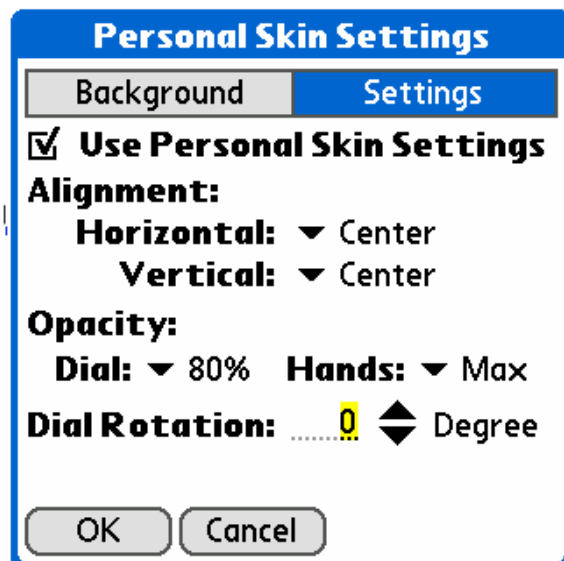
You can link your favorite skin with your favorite background. Just tick **Use Personal Background**. (All attempts to change the background in the previous form will have no effect).



The dialog box is titled "Personal Skin Settings" in a blue header. It has two tabs: "Background" (selected) and "Settings". Under the "Background" tab, there is a checked checkbox for "Use Personal Background". Below this, a dotted box contains the filename "skullwave.JPG". Further down, "Background Zoom:" is set to "Fill screen" with a dropdown arrow, and "HR+ Autorotate:" is checked. At the bottom are "OK" and "Cancel" buttons.

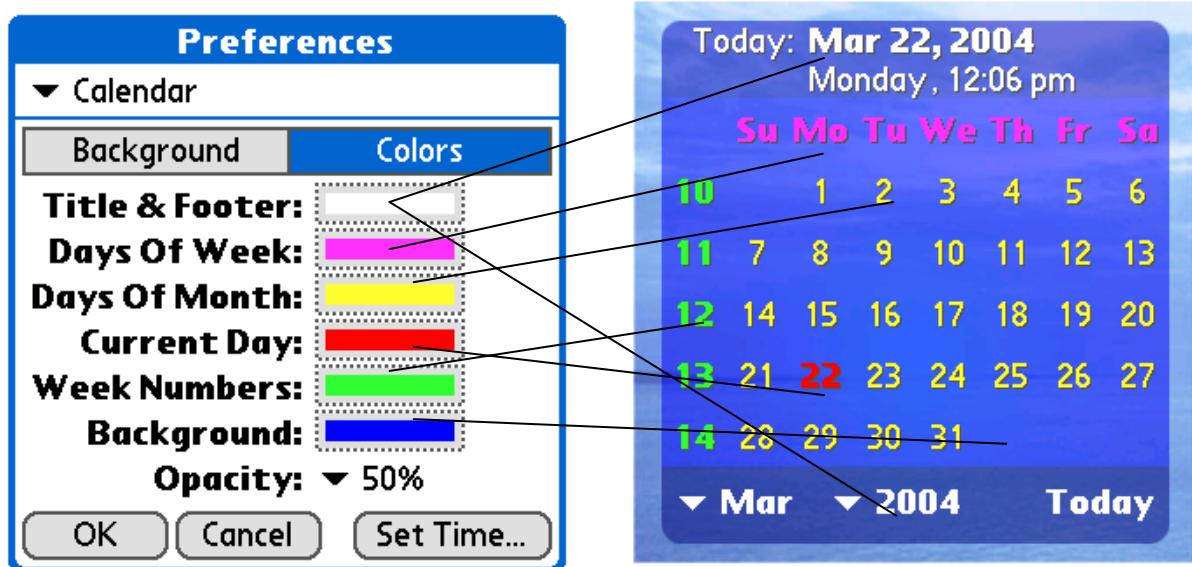
To change personal clock settings tap **Settings**.

To apply personal skin settings simply tick **Use Personal Skin Settings**.



The dialog box is titled "Personal Skin Settings" in a blue header. It has two tabs: "Background" and "Settings" (selected). Under the "Settings" tab, there is a checked checkbox for "Use Personal Skin Settings". Below this, "Alignment:" is shown with "Horizontal:" and "Vertical:" both set to "Center" with dropdown arrows. "Opacity:" is shown with "Dial:" set to "80%" and "Hands:" set to "Max" with dropdown arrows. "Dial Rotation:" is set to "0" with a spinner icon and "Degree". At the bottom are "OK" and "Cancel" buttons.

Calendar Preferences



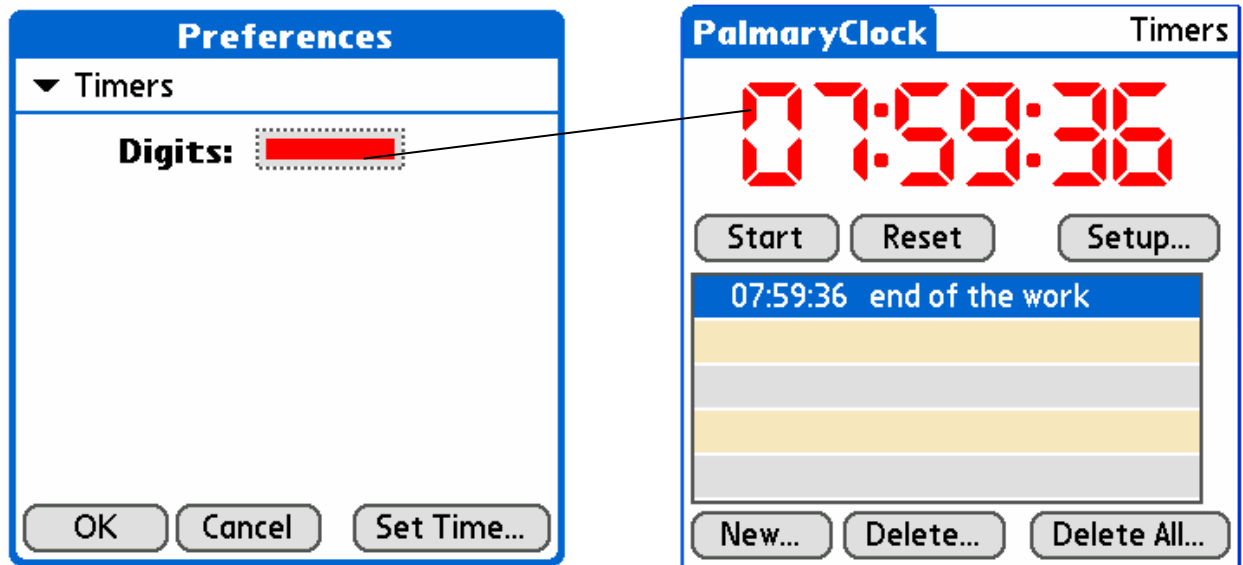
Colors – sets the colors of calendar's elements.

You can refer to the Timers Preferences form for more details about colors settings..

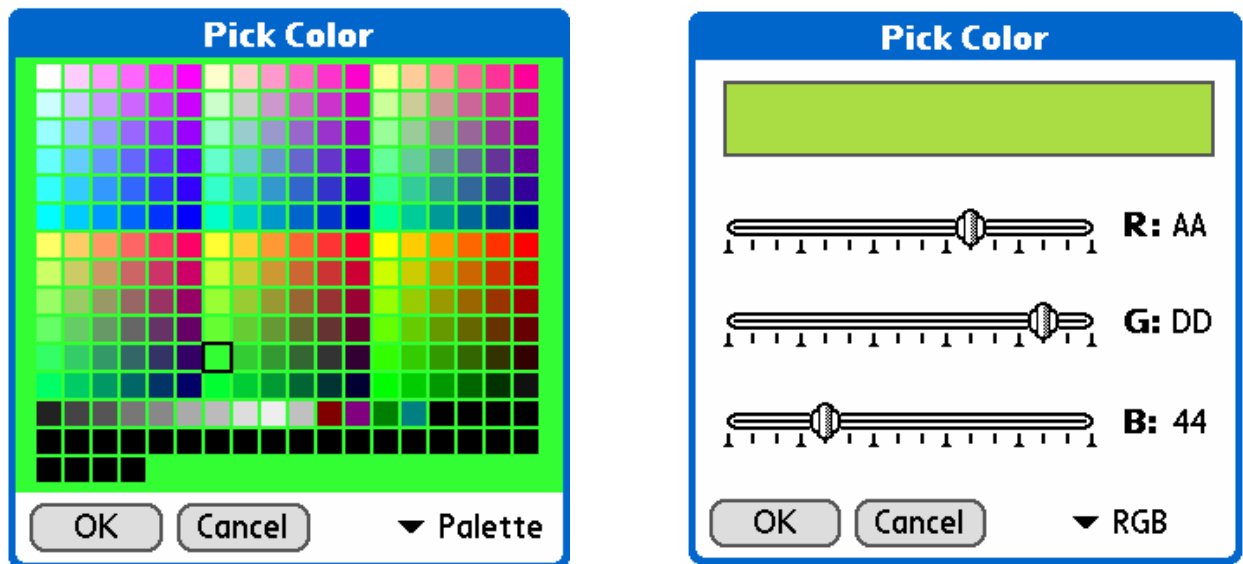
Opacity – sets opacity of the calendar background image.

Background – here you will see the name of the current background. Besides this, here you can also change the current background or enable the Slide Show mode for background. To change current background, tap its name and select another from the list. You can refer to the Clock Preferences form for more details about Slide Show or Background Settings.

Timers Preferences

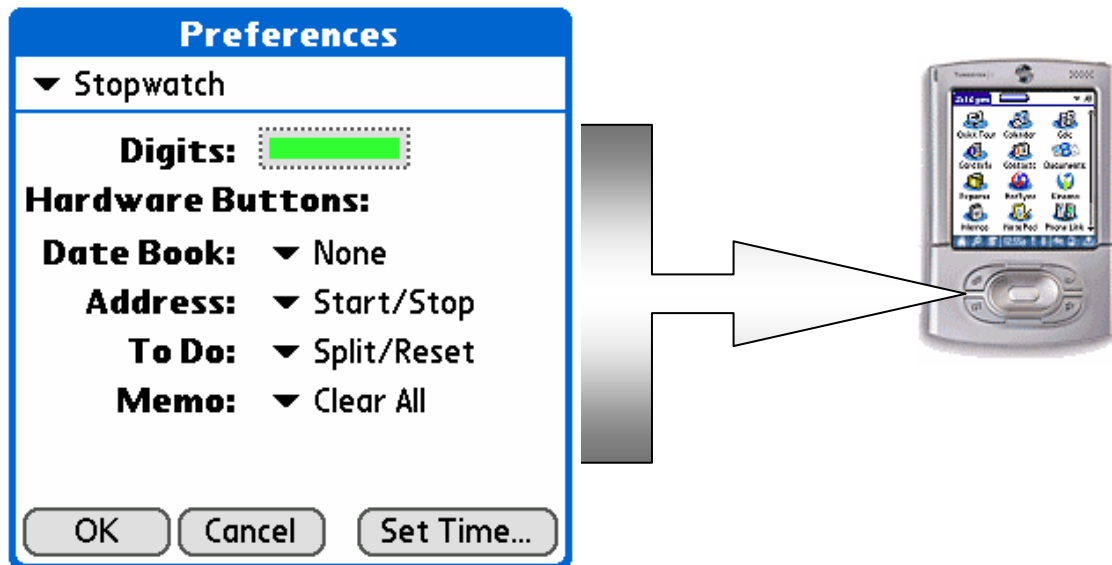


Digits – sets the color of Timer's digits. To change the color tap the field.



You can choose a palette color or create your own tone with the help of RGB (Red, Green, and Blue) form.

Stopwatch Preferences

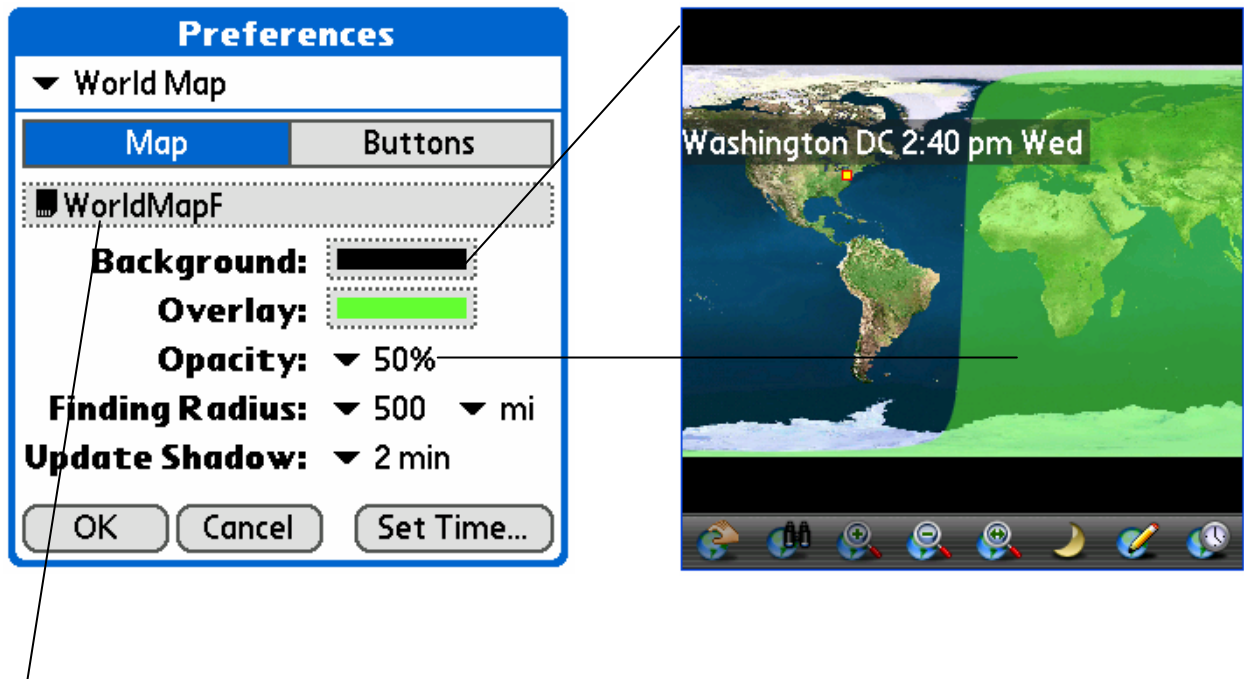


Digits – sets the color of Timer's digits. To change the color tap the field.

You can refer to the Timers Preferences form for more details about colors settings.

Hardware Buttons – you can assign stopwatch's button (Start/Stop, Split/Reset, and Clear All) to any hardware button you want.

World Map Preferences



Here you will see the name of the current map. To change the current map, tap its name and select another map from the selection window.

Background – sets the color of your map's background.

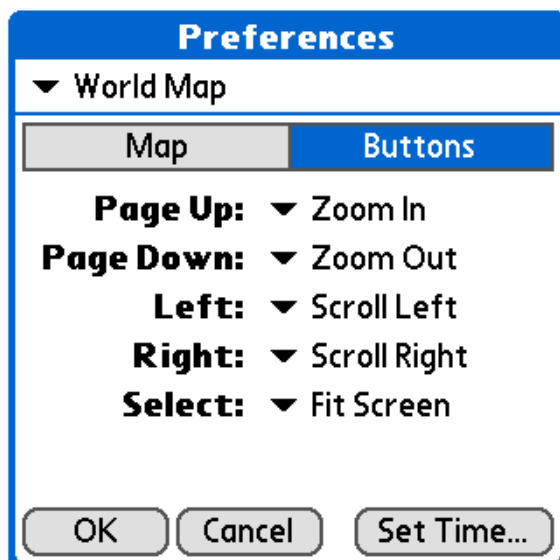
You can refer to the Timers Preferences form for more details about colors settings.

Overlay – sets the color of the night area shadow.

Opacity – sets the transparency of night area shadow.

Finding Radius (for Find icon) – sets the radius in miles or kilometers to the nearest city from the point you have touched on the map.

Update Shadow – sets the interval between the position changes of the night area shadow.



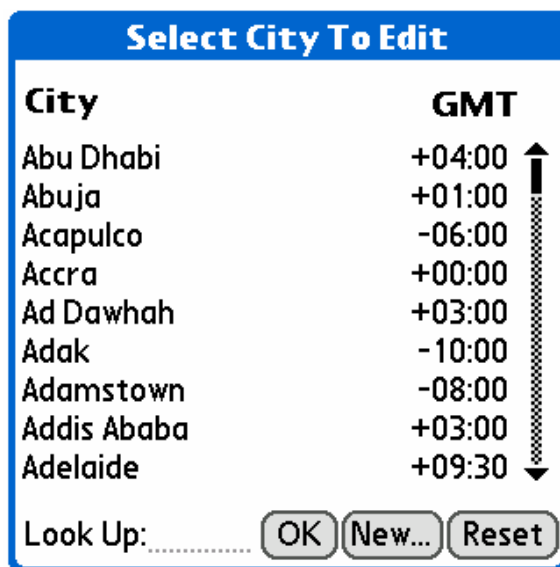
You can assign Scroll, Fit or Zoom function to any of the 5-way navigator of your Palm.



[Table of contents](#)

Edit Cities Form

If the city needed is absent in the list, it is possible to add or edit the cities database. To do this select Options->Edit cities... in program menu. The cities list will appear. To the right of a city name you will see the city local time offset from GMT.



City	GMT
Abu Dhabi	+04:00
Abuja	+01:00
Acapulco	-06:00
Accra	+00:00
Ad Dawhah	+03:00
Adak	-10:00
Adamstown	-08:00
Addis Ababa	+03:00
Adelaide	+09:30

Look Up:

OK - return

New... - add new city.

Reset – return to the default database. All the changes you have made will be cancelled.

You can refer to the World Time View form for more details about **Look up** function.



City	GMT
Adelaide	+09:30
Aden	+03:00
Aklavik	-07:00
Algiers	+01:00
Amman	+02:00
Amsterdam	+01:00

Duplicate City

Duplicate: ▼ Los Angeles

Tap the **New** button to enter a new city. Duplicate City window will come up.

If you want to add new city using information about a city from the list, select it in the list and tap **Duplicate**.

If you want to enter all parameters by yourself, tap **New**.

Cancel button – return to the previous window.

To edit information about a city, select city you need in the Select City. To do this, just tap the city name. Use the Edit City form to edit or delete a city from database.

Edit City

Name: Adelaide

GMT offset: +9 : 30

☒ DST enabled

Start: Last Sunday of October

End: Last Sunday of March

Daylight Bias: 1 2 Hour(s)

Location: 34°56' S, 138°36' E

OK

Cancel

Delete

Name – name of city

GMT offset – time offset from GMT. (Measured with 15 minutes discontinuity).

DST enabled – if on, DST regime (mode) is enabled for the city

Start – DST period start

End – DST period end

Daylight bias – DST time offset. It can be either one (default) or two hours.

Location – geographical coordinates of the city

OK – return to the previous window saving the changes made.

Cancel – return to the previous window without saving the changes made.

Delete – deletion of city.

You can use the DST Start/Stop form to change information about start and end of DST period. Use the Set City Location form to specify the location. It is necessary to fill out this form as this information is used by Sunrise View and World Map View.

Edit City

Name: Adelaide

GMT offset: +9 : 30

☒ DST enabled

Start: Last Sunday of October

DST Start / Stop

▼ Last

▼ Sunday

of ▼ October

OK

Cancel

Edit City

Name: Adelaide

GMT offset: +9 : 30

Set City Location

Latitude

34 deg 56 mins ▼ South

Longitude

138 deg 36 mins ▼ East

OK

Cancel

[Table of contents](#)

Registration Form

PalmaryClock
PalmaryClock v.2.1
Trial time expires in 21 days.
To purchase registration
code please visit:
www.palmarysoft.com
Enter your registration code:
.....

Enter into this field your registration code that you got after program purchase.

Remember that you can freely use the PalmaryClock program only during 21 days from the moment of installation.

PalmaryClock Basics

Skins

PalmaryClock skin is an external program that contains all the data for displaying clock on your Palm-organizer screen. Skin program interacts with PalmaryClock. You should install a skin either onto the memory card (preferable variant) or into the internal memory of your Palm-organizer. After this, the skin will be available for selection in the Skin List of the Preferences Form.

Note: It is impossible to use a skin separately from PalmaryClock.

Installation of a skin does not differ from installation of any other program. To install a skin, use the Palm Desktop program on you desktop PC. We recommend you to install skins onto the memory card to save the internal memory of your device. When installed on the memory card, skin is placed into the PALM/Launcher folder. As any program, skin occupies certain part of you Palm -organizer or card memory. Therefore, if you do not use a skin, it might be better to delete it.

Skins control functions (including Delete option) can be found in the section Skins of the Preferences Form. After removing PalmaryClock from your Palm-organizer, skins installed into the internal memory will be deleted automatically. Skins installed onto the memory card you should delete by yourself.

If you want to save memory of your Palm-organizer, refuse from installing the skins. PalmaryClock in this case functions as usual, as it contains built-in default skin and background.

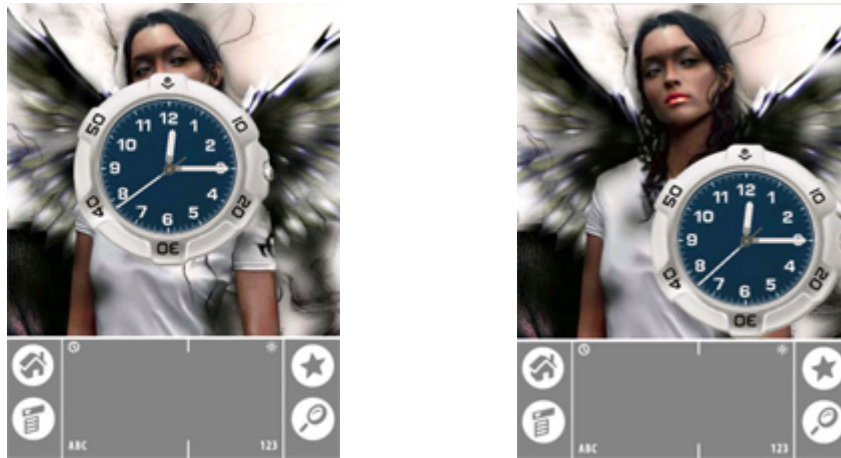


What is a PalmaryClock skin? It is not very difficult. First, it contains digital image of clock or watches: one or several dials, figures, housing and even bracelet if necessary. Second, it contains the image of the clock hands in position 12.00. There are usually three hands (hour, minute and second), but versions both with greater or smaller quantities are possible. Third, skin contains information necessary for the correct clock displaying (information about clock center and hands fastening point coordinates, etc.). Fourth, skin contains information that will allow you to use in clock design such additional effects as

shadows and transparency - effects that give charm to your clock!

You see, all looks rather simple. However, skin information is not enough to make your clock look naturally on the screen. In fact, skin is only initial data for a complex procedure of graphic processing, which we realized in PalmaryClock. We have developed the procedures that still have no analogs on the Palm platform. Does PalmaryClock allow using additional effects to customize a skin? Yes! Moreover, sometimes it is simply necessary! We have realized the following effects: Skin alignment, Skin opacity, Skin rotation that is adjusted in Preferences Form.

The Skin alignment effect makes it possible to move the clock across the screen (clock in the screen center sometimes does not go well with the background you have chosen).



The Skin opacity effect is used if it is necessary to change clock transparency. If the opacity is selected as «none», clocks become invisible on the screen.



The Skin rotation effect... Simply makes clock more stylish!

Backgrounds

Here is some information about the images that you can use as a background for your clock.

You can use as a background any of the sequential jpeg digital images available on your Palm-organizer. To store images, as also any other information, Palm offers you two ways: save them either into the internal memory or onto the memory card. The information to the memory card is saved in the form of separate files of the \DCIM\Images (\MS\Images for Sony handhelds) folder. All the jpeg images in this folder can be used as a background and are available in the Background list of the Preference form. There are several ways to save jpeg files onto the memory card, including that with the help of Palm Desktop (Palm Photos program) on your Desktop PC. In the internal memory of Palm-organizer jpeg images can be stored as Palm OS databases.

Note: database format can be one or another depending on the application in which the database was created. PalmaryClock supports the databases format for jpeg images storage, which is used also in Palm Photos. If you want to save an image into the internal memory of your Palm-organizer, use the program Palm Desktop (Palm Photos program) of your Desktop PC. The current version of PalmaryClock supports only jpeg and does not support progressive jpeg. That's why not all jpeg files can be used as a background. Sorry. Now we are working on it to solve this problem.

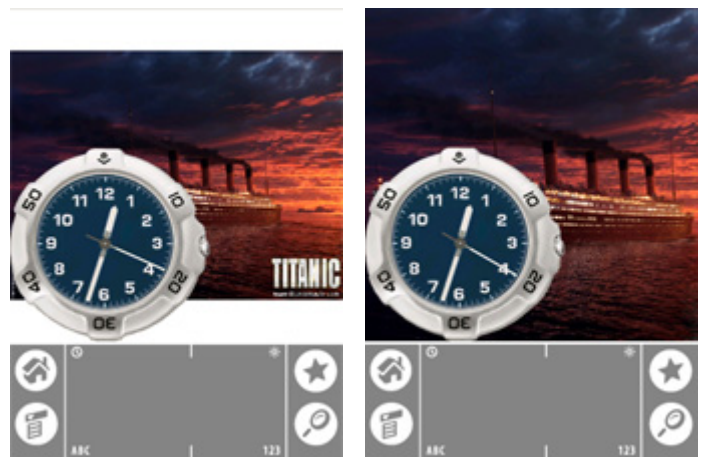
Is a background present or absent, it does not influence the work of PalmaryClock. You can disable background at all or use the built-in default background of PalmaryClock. Besides this, we recommend you to disable background, if it seems to you, that change of skin or/and background takes too much time.

Note: duration of the skin change procedure does not influence PalmaryClock start speed.

Especially for you we have developed SkinMaker - a skin manager. Using it, you can create skins by yourself.

Is it necessary to do something with a jpeg image before converting it into a background? No, nothing is required. Still we can advise you to perform several operations.

First, it is possible to prepare the image especially for your Palm-organizer. There is no sense to use as a background a 1024x768 pixels image if



resolution of your device screen is only 320x320 pixels. Besides this, such an image will load very slowly, and the results will not gladden you: after scaling you will see white strips above and below the background. Therefore, our first advice is: use your favorite graphics editor to adjust the size of the image to that of your device (slight differences are possible) Resolution of your device screen must be mentioned in device documentation.

Another thing you should do is to pay attention to the image content. Most of the details of a too big and detailed image will disappear after scaling. Not all images that appear well on the Desktop PC will appear well on your handheld device. Therefore the second advice is: use a graphics editor that will delete the image details will not visible on the screen.

Third, remember that your Palm-organizer screen is able to display at best up to 65535 colors. Digital images can contain up to 24 mln of colors and hues. Therefore the third advice: Do not use as a background the images, containing much more colors than your Palm device screen can display. You can use as a background photos made with a digital camera. Though the size of these photos is usually big, it is not a problem for PalmaryClock, you do not have even to do something with the image beforehand.

If you use the Palm Zire 71 device with built-in camera, photos become automatically available for PalmaryClock. They will show up in the Background list of the Preference Form. If you use digital camera, you should copy photos onto the memory card or into the internal memory of the Palm-organizer in jpeg format. If your camera and your Palm-organizer are equipped with devices for reading from memory card, for example SD/MMC card, try the following: take photo, place it onto the memory card (see instruction for camera) and insert the memory card into your Palm-organizer. Your photos should become available in the Background list of the Preferences Form. If it does not happen, you will have to try another way: use your desktop computer for transferring the photos. To do this, copy the photos from your camera onto the desktop PC (see instructions for camera). Then use the Palm Desktop software to place photos in Photos database format onto the memory card or into the internal memory of your Palm organizer. The last thing you should remember: jpeg image that is used, as a background must be always available for the program. In case you delete the file containing image from the memory card or take out the memory card from the device, background will be deleted immediately, and your skin will be displayed on white background.



PalmaryClock getting started

To make PalmaryClock more convenient in use we provided quick start of the program. So, clock appear on the screen not later than in a second after you've started PalmaryClock in order to find out what time is it. Moreover, you will have to wait a second only in case you have an old device. You will not even notice the delay on a modern Palm-organizer (for example, of Tungsten family).

However, it is necessary to explain here the following. When you select a new skin or background, the clock design is formed anew and saved into a special memory area called PalmaryClock Cache. When started, PalmaryClock quickly renews the screen from PalmaryClock Cache and draws anew clock hands (or figures). The procedure of skin or background change can take a long time. It depends, for example, on the jpeg image that you have chosen for background. However, PalmaryClock Cache makes the start procedure very quick. Payment for the start speed is memory of you device, as PalmaryClock Cache constantly occupies part of memory between the starts of PalmaryClock. If you consider memory not an adequate price for speed, just disable the PalmaryClock Cache in the Preferences Form. It is also expedient to disable this function on new devices, as PalmaryClock on them loads quickly event without PalmaryClock Cache.

System management

PalmaryClock does not change any of the system settings by itself! Actually, PalmaryClock allows only changing current system time, using a standard PalmOS Preferences Date and Time dialog for this purpose (see Preference Form description). We made this especially not to prevent the work of other applications on your Palm organizer. You can use other programs to control date and time simultaneously with PalmaryClock. However, PalmaryClock interacts closely with the operation system to realize such functions as setting the alarm and "In cradle" modes and support of Portrait/Landscape modes. PalmaryClock allows setting almost unlimited number of alarms (65535). Alarm setting consists of setting the date and time of an alarm. After that, the control over the alarm is transferred to OS. If the basic alarm program is deleted, all the alarm settings will be also deleted automatically.

"In cradle" mode will be useful if you want to use your Palm organizer as stylish multifunctional table clock. If you enable the "Start in cradle" function in the Preferences Form, PalmaryClock will be automatically started every time when inserted into the cradle. If the cradle is connected with the charger and battery charging begins, PalmaryClock will not let your Palm organizer switch off automatically as in default case. It should not worry you, as there is no need to minimize energy consumption during battery charging, while you get stylish table clock. Constant functioning of PalmaryClock in the "In cradle" mode does

not prevent the other system functions, such as synchronizing with desktop PC. After removing device from the cradle PalmaryClock switches off automatically and control function is transmitted to the application that was active before the device was put into the cradle.

If you Palm organizer can work both in Portrait and in Landscape mode, PalmaryClock will automatically adjust to the mode that you use. PalmaryClock is able to recognize Portrait/Landscape modes change and adjust to the selected mode while running. Moreover, do not forget about the Background Best Fit in Preferences Form. If this function is on, PalmaryClock will try to form the background that fits best the mode you use (Portrait or Background) and will turn the background if necessary.

World Time

If you have never used the World Time, please look through the information below.

Home city is the city in which you live or spend most part of time.

Time zone— geographical region with the same current time in all its parts. Time zones are «stripes» each 15° longitude wide. There is 1 hour difference between the current times of two neighboring zones. The idea of dividing the entire Earth surface into the time zones with Greenwich meridian as the zero line belonged to Canadian engineer S. Fleming. Current time inside the time zone is the same in all its parts, and on time zone boundaries clocks are set 1 hour forward or back. In 1883, the Fleming's system was introduced in the USA, and in 1884 during the international conference in Washington, the agreement on time zones was signed by 26 countries signed.

GMT time offset is the difference between the Greenwich Mean Time (GMT) and time of the zone you live in.

Daylight Saving Time (DST) is also called "summer time". It means setting clocks forward or back in a global manner, in order to expand artificially the daylight hours. People try to get up with sunrise to use the maximum of daylight time. This is the reason the idea of winter and summer time appeared. Clocks are set one hour forward in either late March or early April and set one hour back in either late September or early October.

All this information is considered by World Time of PalmaryClock program.

World Time makes it possible to see on the main screen simultaneously the current time in four cities situated in different time zones. Besides showing the current time for different cities, World Time gives you information about sunrise and sunset time for home city and current date. You can also get the sunrise and sunset time information for any city (or even any place) and any date. When the program is started for the first time, you are offered to choose your home city from the cities database. If your city is absent in the list, you can easily add it.

Internet Time

Internet Time is a "new" way to tell time, invented and marketed by the Swiss watch company [Swatch](#). The current Internet Time is the same all over the World (no time zones or daylight saving time adjustments).

Instead of dividing the virtual and real day into 24 hours and 60 minutes per hour, the Internet Time system divides the day into 1000 ".beats". Each .beat is 1 minute and 26.4 seconds.

Internet Time is based on a new Meridian (as opposed to the Greenwich Meridian). This new Meridian goes through Swatch's office in Biel, Switzerland and is called the BMT (Biel Mean Time) Meridian, which is linked up to the Central European Winter/Standard time - which is UTC + 1 hour. When it is Midnight in BMT, the Internet Time is @000 beats, Noon is @500 beats.

Time unit conversions

Beat Unit	Conversion	Unit	Beat Conversion
1 .beat	= 0.001 day	1 day	= 1000 .beats
1 .beat	= 0.024 hours	1 hour	= 41.666 .beats
1 .beat	= 1.44 minutes	1 minute	= 0.6944 .beats
1 .beat	= 86.4 seconds	1 second	= 0.01157 .beats

Advantages of the Internet Time system

- It uses the normal decimal system, instead of the ancient 24 hour, 60 minute, 60 second system which makes time telling more complicated.
- .beat time calculations are easy, @345 + 456 .beats = @801, compared to e.g. 3:45:20 + 2 hours, 25 minutes, 45 seconds, where the seconds, minutes and hours must all be added.
- No need for time zone conversions - the Internet Time is the same everywhere.

Disadvantages of the Internet Time system

- The use of the Biel Meridian introduces an unwanted additional Meridian - the Greenwich Meridian is the standard Meridian of the world.
- The second, and not the beat is the basic unit of time in the International System of Units (and using .beats instead, would complicate the system).
- The Internet Time system might seem like more of commercial marketing attempt, than a real system.

Summary

As the current hour/minute/second system is already widely adopted, it is very unlikely that the Internet Time system will be able to replace it, even on the Internet. There is already a common time system without time zones and daylight saving time in wide use today - UTC, which should be used instead.

Free use and Registration

Full functional trial version of PalmaryClock is available for free use during 21 from the moment of installation. This time seems to us enough to estimate all the advantages of the program and, perhaps, to find its deficiencies. In 21 days, you will have to choose: buy the program or refuse from using it. Each time started, PalmaryClock, remaining functional, will remember you about registration necessity.

We hope you will use our program. We developed it especially for you.

We appreciate any comments regarding our products and service, your wishes and recommendations are very important for us.

You may purchase our software here www.palmgear.com only using an online method (by credit card).

Registration for our software means purchasing a registration code that will remove all limitations of trial version. Registration code will be immediately sent to you after purchasing. Enter it exactly as it appears, and the trial software will be converted into a registered version.

Skin management

Download skin

You can download simple skin or skin's pack from our site www.palmarysoft.com.

Create new skin

You can create skin for PalmaryClock by yourself with help of special program SkinMaker. Visit [our site](#) for more info.

System requirements

PalmOS version	4.0 and later
Colors	16bit color 8bit color 4bit gray 2bit gray 1bit gray
Display	160x160 LoRes 320x320 HiRes 320x480 HiRes+
Landscape mode	Support
Processor type	Motorola 68K or ARM compatible
Memory	Need 300Kb free memory
Supported devices	Any Palm OS 4.0 or later compatible devices

Revision History

Version 1.0.2

- Random slideshow for skins and backgrounds is added.
- Misc bug fixes and some improvements.

Version 1.0.1

- Improved Alarms support.
- Minor bug fixes.

Version 2.0.0

- Three new modes are added: Timers, Stopwatch, and World map.
- Preferences form is improved.
- Alarms mode is improved.
- World Time mode is improved.
- Reminder Screen is improved.

Version 2.1

- Time Utilities mode is added (Sunrise, Internet time and Time calculator).
- Volume, Led and Vibrate settings are added for Alarm and Timers modes.
- The choice of the view to start PalmaryClock with is added to the General preferences.
- DST bug fixes.

Troubleshooting

Q: [How does the trial version PalmaryClock differ from the regular version?](#)

Q: [How do I enter my registration code?](#)

Q: [PalmaryClock is displaying the wrong date/time. How do I correct this?](#)

Q: [Does PalmaryClock support VFS external memory cards?](#)

Q: [How can I get more images to display in PalmaryClock?](#)

Q: [The image installed to the memory card will not show up in the Background List.](#)

Q: [I cannot install the background from the memory card, handheld screen remains blank.](#)

Q: [Skin and background download from the memory card takes too much time.](#)

Q: How does the trial version PalmaryClock differ from the regular version?

A: The trial version and regular version are identical. The software will run for 21-days in trial mode without requiring a registration code. Once the 21-day trial expires, you must purchase a registration code to continue using the product.

Q: How do I enter my registration code?

A: In order to enter the registration code you should run the program, press the menu icon. Then select the "Options" menu and click on Register you will be able to enter your registration code.

Q: PalmaryClock is displaying the wrong date/time. How do I correct this?

A: PalmaryClock displays the date/time set in the Palm Preferences. To adjust this, go to the PalmaryClock Preferences and click the Set Time button. This will call the Palm OS Date & Time Preferences where you can set the correct date/time. If it is a one hour mistake check DST setting of the OS Date & Time Preferences.

Q: Does PalmaryClock support VFS external memory cards?

A: PalmaryClock supports storing images on external memory. However, the application must be stored on internal memory in order for the Start in cradle and Alarm feature to work.

Q: How can I get more images to display in PalmaryClock?

A: PalmaryClock comes with one sample image, but you may add other images to PalmaryClock. PalmaryClock will read any .jpg file that is in one of these locations on the Card: \DCIM \Palm\Images.

Q: The image installed to the memory card will not show up in the Background List

Q: I cannot install the background from the memory card, handheld screen remains blank

A: PalmaryClock might not support the image format. Therefore, you need to convert the image into sequential JPEG (progressive JPEG is not supported). To do this, use any image-editing program of your desktop such as Adobe PhotoShop. Very soon, the list of the formats supported by PalmaryClock will be extended.

Q: Skin and background load from the memory card takes too much time

A: The size of the image you have chosen for background is probably too big. To optimize the load quality and speed, adjust the image resolution to that of your device screen. To do this, use any image editing programs of your desktop such as Adobe PhotoShop. However, speed of skin and background load does not influence the time for performing other, more important, operations such as application start. So if you are not going to change skins and backgrounds very often, just wait.

Contacts

If you would like to contact us, please send your message to one of the addresses below. We are ready to answer all your questions and provide the best service possible.

If your question is about our software use, visit the Support page first. In case you will not find the answer, send your question to: support@palmarysoft.com

Other questions e-mail to: contact@palmarysoft.com



© PalmarySoft