

SuperList™

ScaryBear Software

Quality Applications for the Pocket PC Devices

User's Guide

Version 1.0

Introduction

SuperList is a hierarchical checklist program allowing for multiple sub-items and branch trees for efficient categorization. You can either import your list from a simple text file or create main and sub-item entries directly on the screen. If you decide later that you want to reposition the order of certain items on the screen, you can do so by a simple drag-n-drop procedure. The text colors, background images, display attributes, etc. are all customizable for each list you create. With **SuperList** you can easily switch between different lists in your main database, and you can also password-protect certain lists for security purposes.

Installation

SuperList is designed for the Pocket PC devices running the 2000, 2002, and 2003 OS Shell. This includes all devices using the WinCE 3.0 or 4.0 base OS.

The installer program for **SuperList** is contained in the [superlist.zip](#) file, which you downloaded from either our web site (www.scarybearsoftware.com) or another online vendor's site. Running the installer program called [superlist_install.exe](#) on your Desktop PC will install the necessary files on your Pocket PC device when you make a valid ActiveSync connection between your device and Desktop PC. A shortcut to the **SuperList** program can be found in the "Programs" screen on your device, labeled **SuperList**.

For best performance, it is recommended that you install SuperList in main memory. You can install the application on an external CF or SD storage card, however, you may notice a performance degradation due to the reading from and writing to the slower storage media.

Registration

By default, SuperList will be installed as a trial version, which has all the functionality of the full version. The only limitation is that you can only create 2 lists and have a maximum of 10 entries each. With the full version, there is no limitation to the number of lists you can create and the maximum number of entries per list is 30,000. To permanently activate SuperList on your device, you'll need to purchase the software to obtain a valid 12-digit reg key code number. Entering this code number in the "About..." screen of the program will convert the trial version of the software to the full version.

Features

Below is a general list of features for the SuperList:

- Very easy to use
- A hierarchical list program with branches for multiple sub-items
- User-defined colors for text and background
- Can select a custom background image for each list (in bmp, jpg, or gif format)
- Can create multiple lists each with user-defined color properties
- Can have checked items be colored a different color with strike-thru font
- Can easily move items around on the list by drag-n-drop procedure
- Can activate alphabetic and/or check sorting of the list
- Can import items from a text file
- Can export list items to a text file
- Automatic backup and recovery of list database file
- Can password-protect specific lists
- Text notes can be attached to defined items in a list
- Hardware buttons can be used to scroll through the list and check/uncheck items, and expand or collapse tree branches
- Can cut/copy/paste list items
- A "Find" feature is available for substring searches through the list

Usage

General

When you first start SuperList, you will see a screen similar to Figure 1, which shows no lists in the main database.

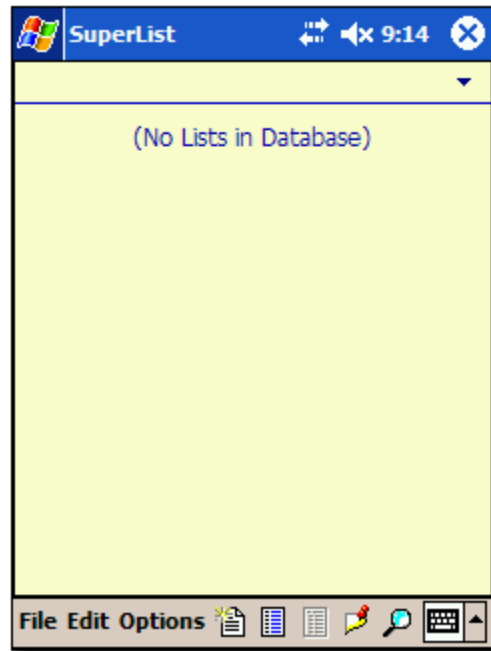


Figure 1
SuperList main display

Figure 2 identifies the menu bar icons, which you can tap to perform specific functions.

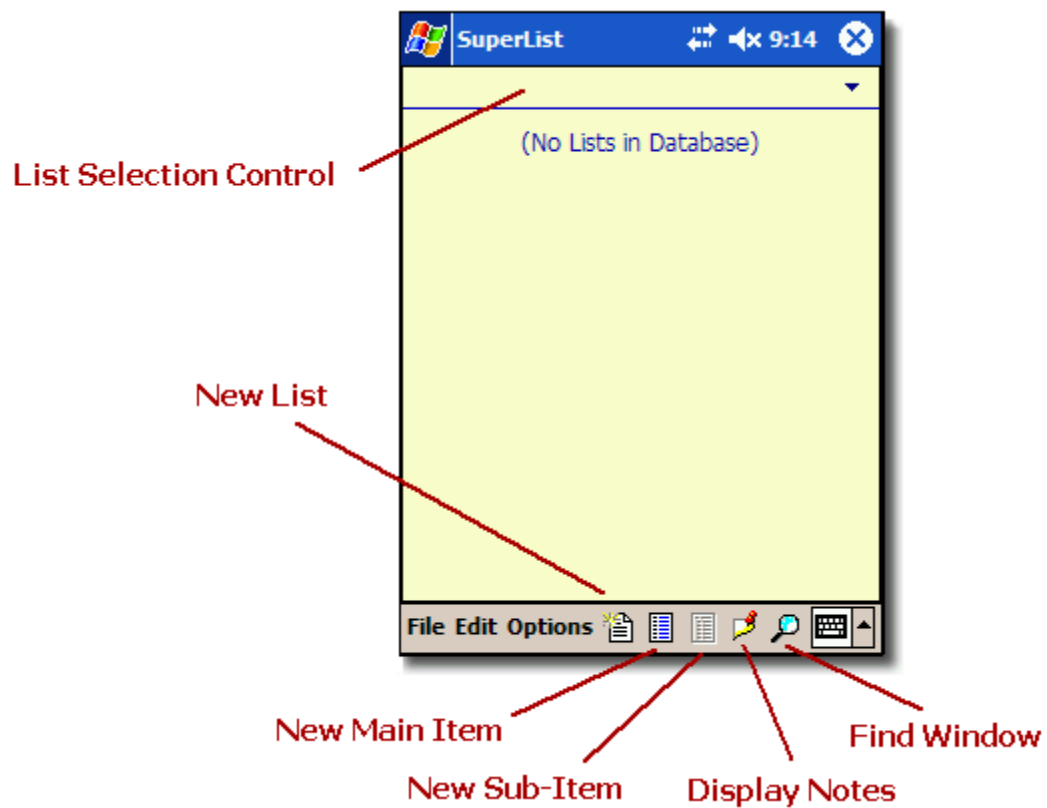


Figure 2
Menu bar icons

To create a new list, either tap on the **"New List"** menu bar icon or select **"File->New List..."** from the Menu Bar. You should see a popup DialogBox as shown in Figure 3 asking for a list name. Once you've created a list, you can begin to add entries by tapping on the **"New Item"** menu bar icon or by selecting **"File->New Main Item"** from the Menu Bar. You should see a small EditText appear on the screen allowing you to type in text for the item label (Figure 4).

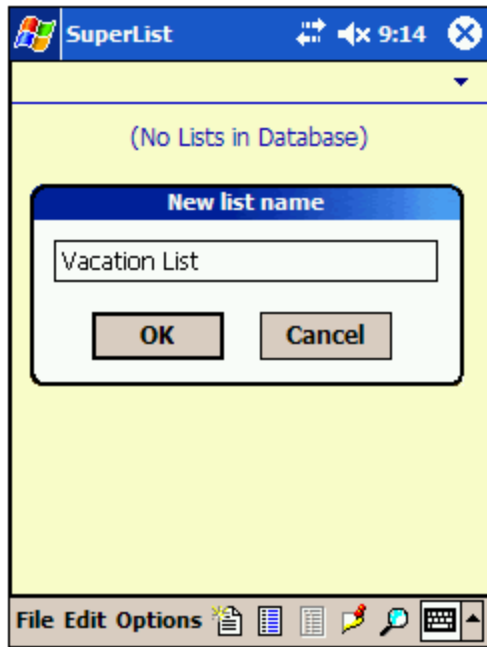


Figure 3
Creating a new list

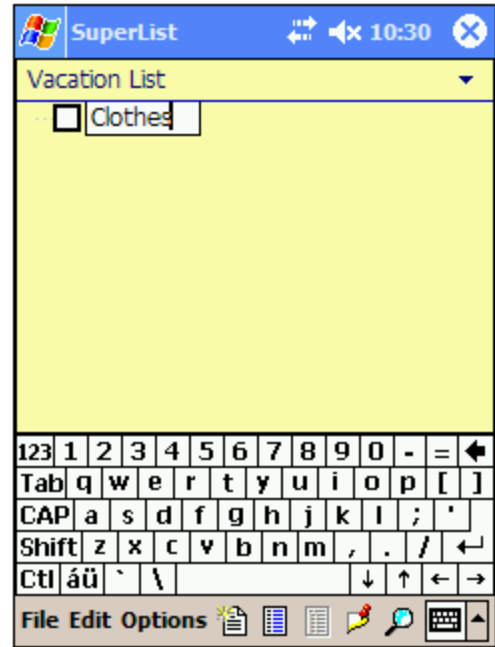


Figure 4
Create a new item

If you want to create a sub-item under the "Clothes" main item, you can do so by doing a tap-n-hold with the stylus on the item "Clothes" on the screen to bring up the popup menu shown in Figure 5, and select **"New Subitem"**. Then enter the text for the sub-item as shown in Figure 6.

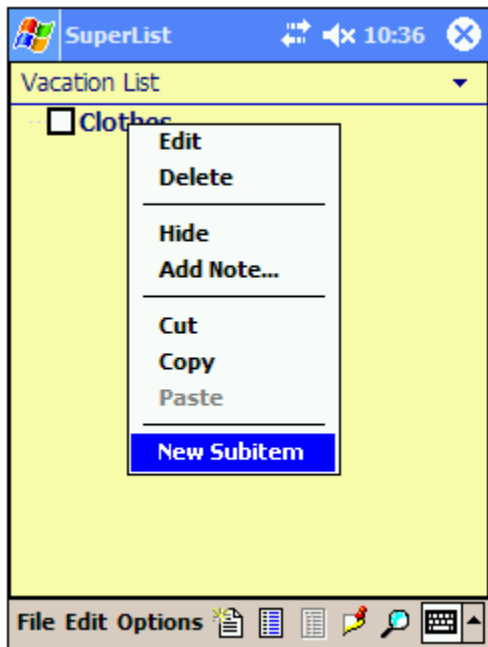


Figure 5
Tap-n-Hold Stylus on Item



Figure 6
Adding a Sub-Item

You can continue with this procedure of adding main items or sub-items to your list. You can also create sub-items from existing sub-items as shown in Figure 7 following these same procedures. If you need to edit the text of an item, simply double-tap on that item to bring up the EditText as shown in Figure 8.



Figure 7
Creating Sub-Items on Sub-Items

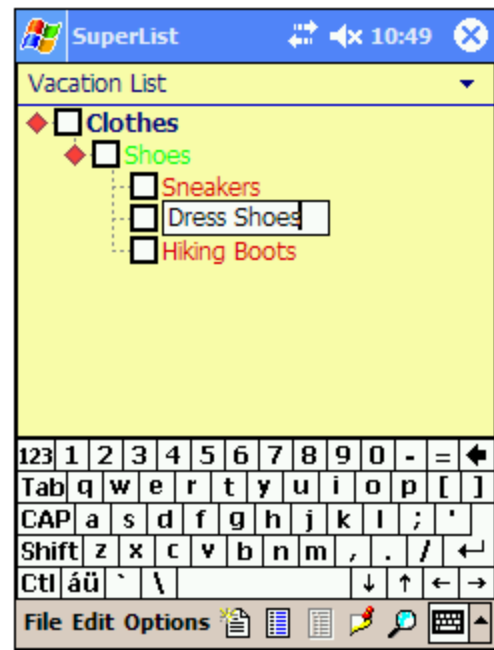


Figure 8
Double-tap to edit an item

To delete a specific item in the list, you can do a tap-n-hold on that item to bring up the popup menu bar (as shown in figure 5), and select "**Delete**" from the popup menu choices.

SuperList also has the capability of attaching text notes to defined items in a list. Just do a tap-n-hold on an item in the list and select **"Add Note..."** from the popup menu (Figure 9), you will see a dialogBox as shown in Figure 10 where you can enter text to be attached to that selected note.

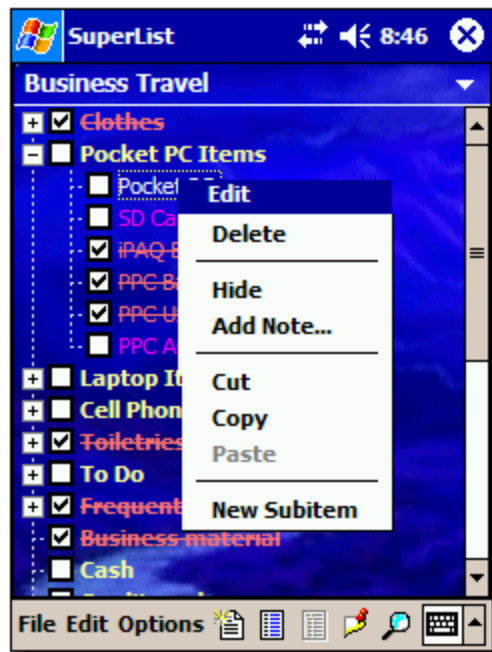


Figure 9
Popup menu with Add Note

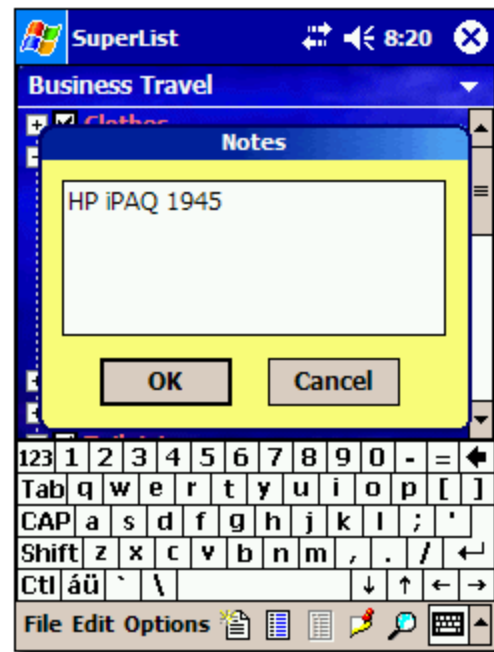


Figure 10
Entering text for an attached note

Now when you look at the main list you will see a small note icon to the right of the item's check box, indicating that a note is attached. If you tap the yellow note icon in the main menu bar, you will see a small window appear at the bottom of the screen which will display the currently selected item's attached note (Figure 11).

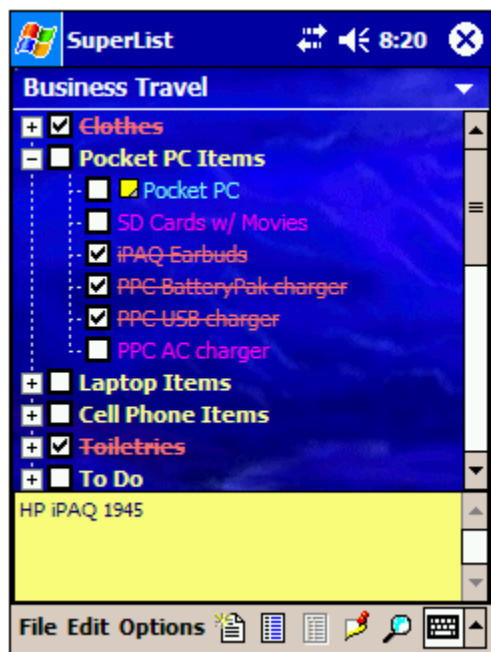


Figure 11
Note icon and displayed Note Text

To delete a note attached to a list item, just do another tap-n-hold on the item with a note, and select **"Modify Note..."** from the pop-up menu to bring up the note edit dialogBox again, and then erase the text in the editbox and leave it blank. When you tap the OK button and return to the list, you'll see that the note icon is now gone.

If you want to rearrange the order of items in a list, you can use your stylus to drag-n-drop a specific item from one location to another on the screen. Just hold the stylus down on the desired item, and then drag it on the screen to the new location. Figure 12 shows what the screen would look like if you were in the process of dragging the item "Dress Shoes" up above the item "Hiking Boots". Note, to start the dragging process you will need to quickly drag the chosen item beyond it's immediate location (either up or down).

While dragging, the left end of the dragged image will change in appearance depending on its relative location to a target location. Figure 13 explains the different scenarios for the drop action and the associated drop graphic image.



Figure 12
Dragging an item on the screen

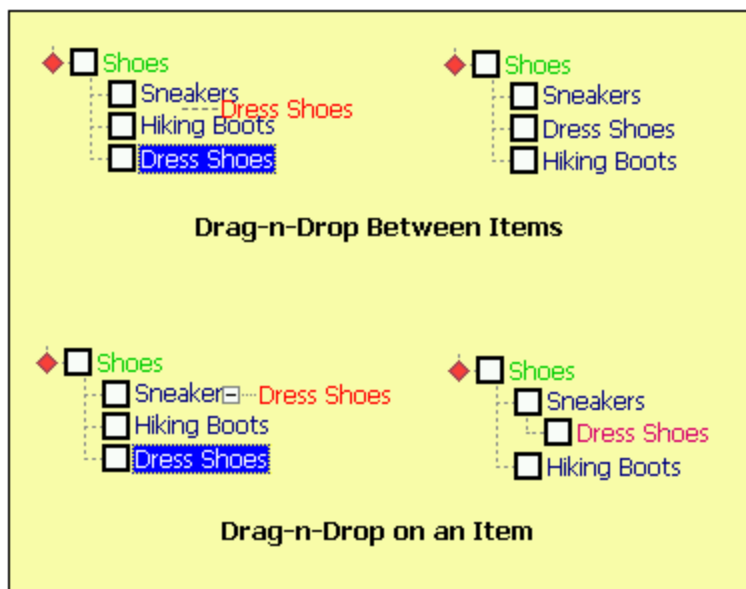


Figure 13
Drag-n-Drop scenarios

The dashed-line in front of the dragged item indicates that the item will be placed either before or after the target item it is hovering over (depending on if the stylus is above or below the target items centerline). The small box with a line in front of the dragged item indicates that the item will be dropped as a sub-item to the target item (as shown in Figure 13). There are no restrictions on where you can drag items on the screen to rearrange their display order.

Tapping on the branch node button (the icon to the left of a parent item) will either expand or collapse a given branch of items. Figure 14 shows a branch expanded and collapsed.

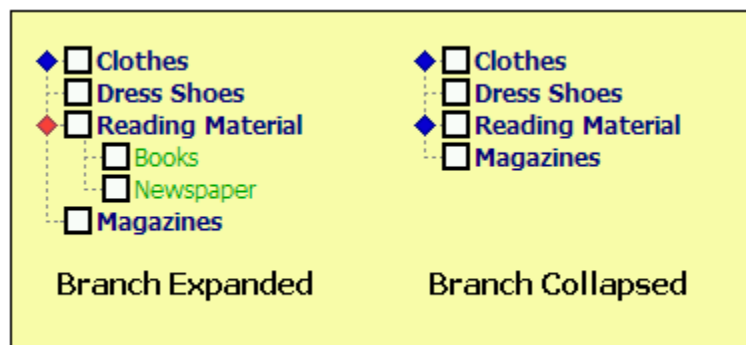


Figure 14
Expanded and collapsed branch

Tapping the **"Find"** icon in the menu bar will bring up the Find window as shown in Figure 15 below. In this window, you can type in a search substring and tap the "Next" button to have SuperList search out the current list and display a matching result on the screen (highlighted). Tapping the Find icon again in the menu bar will cause the Find window to be hidden again.

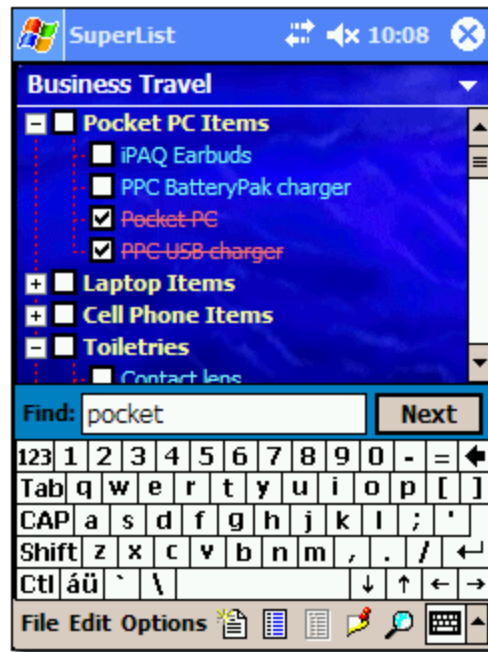


Figure 15
Find Window for substring searches

Menu Bar Selections

We'll now go over the different selections from the menu bar. Figure 16 shows the available items under the **File** Menu.



Selecting **New List...** does the same thing as tapping on the New List menu bar icon, and will display the DialogBox as shown in Figure 3 to create a new list.

The **Rename List...** selection will allow you to rename a current list.

The **Delete List...** selection will delete the currently displayed list.

Selecting **New Main Item...** is the same as tapping on the New Item menu bar icon, and will create a new item in the current list.

If you've highlighted an item in the list and tap the **New Sub Item...** selection, you can create a sub-item under the selected parent item. The highlighted item can be either a main item or a sub-item.

Selecting an item on the screen and tapping the **Delete Item** will delete the selected item from the SuperList database.

Figure 16
File Menu

The **Export List...** function will allow you to export the current list to a simple text file on your system. Tapping this option will bring up a DialogBox as shown in Figure 17 below. Here, you can specify the export file name and in which folder to write the file. Similarly, you can select the **Import List...** option and import an item list from a simple text file into the current list in SuperList. The DialogBox for the import is shown in Figure 18.

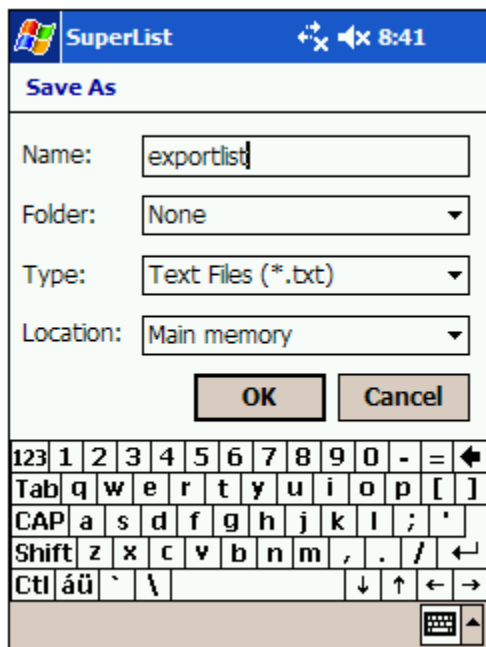


Figure 17
Export list DialogBox

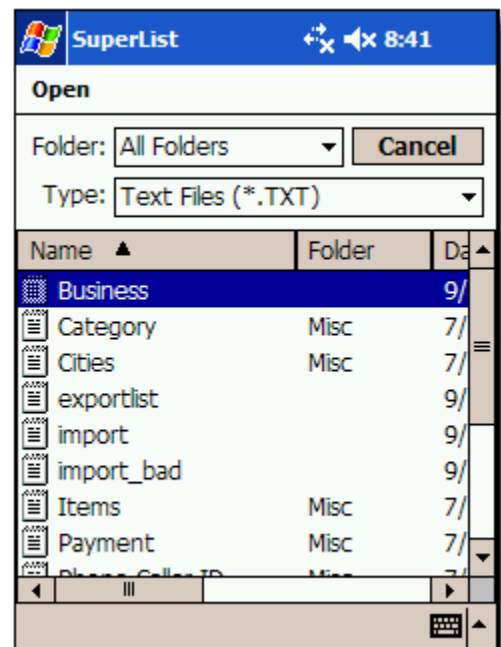


Figure 18
Import list DialogBox

The format of the text file for importing data into SuperList will be discussed later in this document.

The next menu item is **Edit**, which allows you to cut, copy, or paste a selected item in the list. Note, this option will only allow you to do a cut/copy operation on the selected base item in a list, and won't perform the cut/copy operation on the item's children subitems. Also, the menu item will remain grayed out until you actually select an item in the list to copy or have a copied item in the memory buffer.

The **Options** menu is used to change the different display options for the SuperList program. Under **Font Size** you can select the font size for the text drawn in a list on the screen (Figure 19). Under **Sort** you can specify whether you want the current list to be sorted alphabetically and/or by checked status (Figure 20).

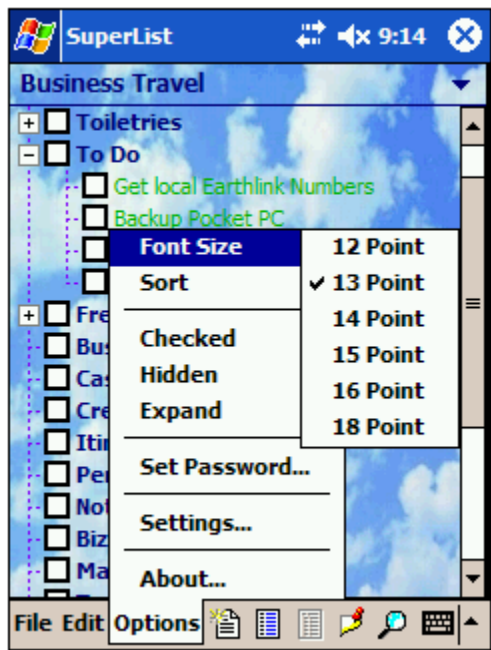


Figure 19
Font size selection

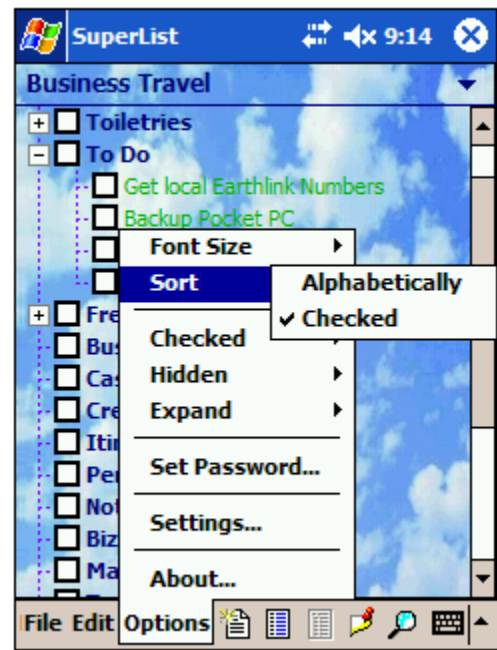


Figure 20
List sort order options

Under the **Checked** menu item, you can quickly uncheck or check all items in the current list (Figure 21). The **Hidden** menu item allows you to flag all the items in list to be hidden or shown (Figure 22). These hidden items can be displayed using a specified color if the **Hilite Hidden** option is activated. Also, the **Hide On/Hide Off** option will allow you to either hide all entries marked hidden or show them.

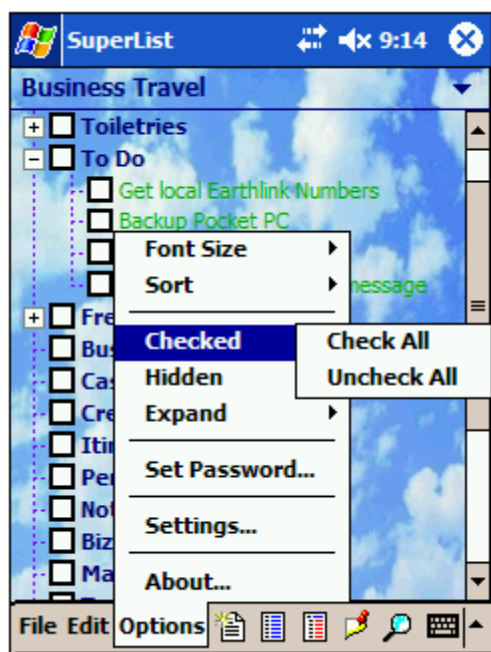


Figure 21
Check/Uncheck Operation

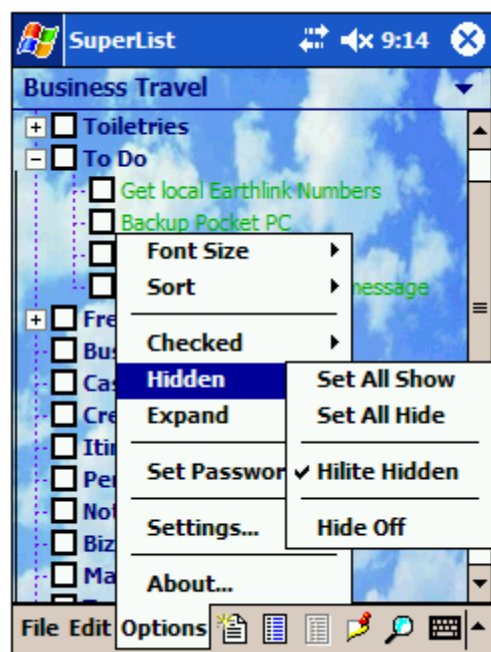


Figure 22
Hidden Options

The **Expand** menu item will allow you to expand or collapse all list branches (Figure 23). By selecting the **Set Password...** entry (Figure 24) you can assign a password to the current list.

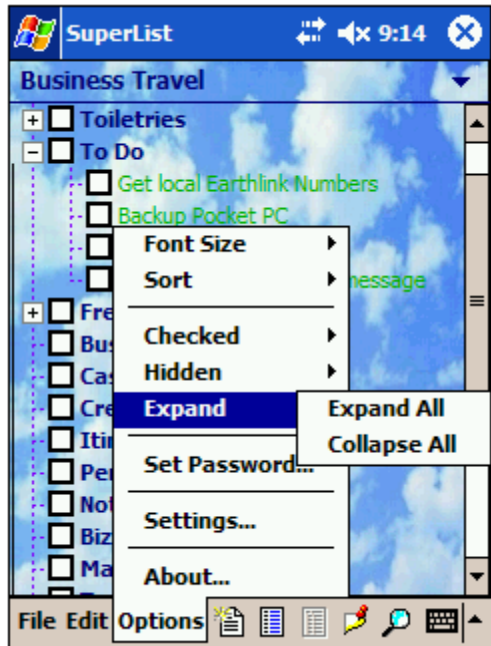


Figure 23
Expand Options

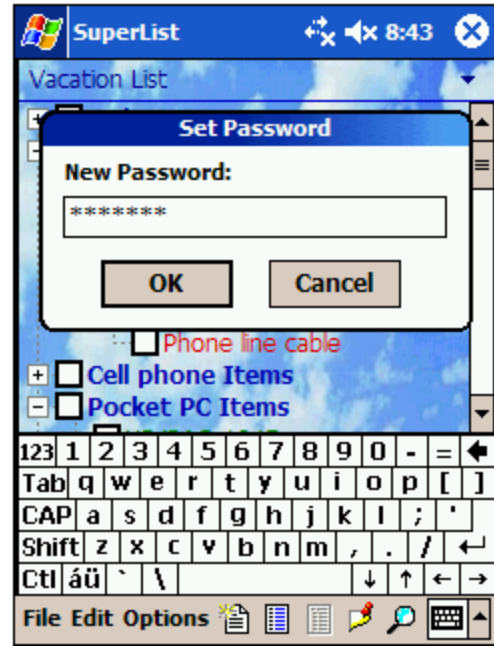


Figure 24
Setting a password for the current list

If later you would like to change the password for a list, you can do so by selecting **Set Password...** again which will show the DialogBox in Figure 25. Note, applying a password to a list won't encrypt the list data. It will simply not display the list items if the user doesn't enter the correct password when trying to access that particular list.



Figure 25
Changing a password for a list

Also, you can remove a password assigned to a list by entering the current password in the DialogBox shown in Figure 25, and then leaving the **New Password** EditBox blank.

Selecting the **Settings...** menu item will display the SuperList configuration screen (Figure 26), where you can adjust colors, display appearance, etc.

Under the **Options** tab screen, you can define whether you want to use a solid color background for the displayed list or a custom bitmap image. Figure 26 shows what you would see if you have **Use solid color** selected for the background settings. Here, you can tap on the colored box to the right of the **Background Color** to bring up the color picker control (Figure 27) to change the background color for the current list.

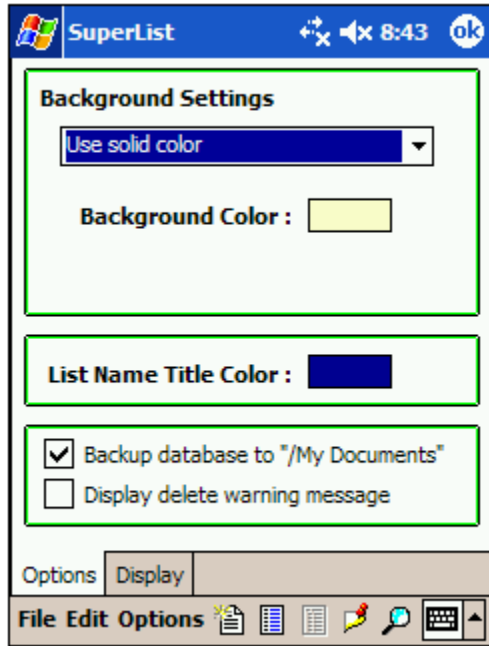


Figure 26
Options tab screen

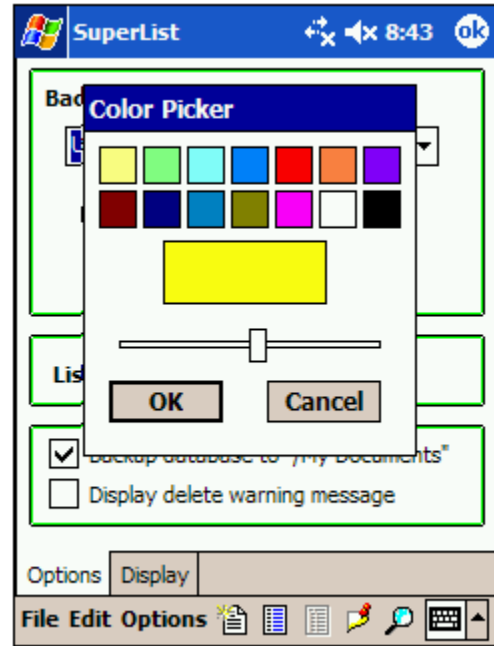


Figure 27
Color picker control

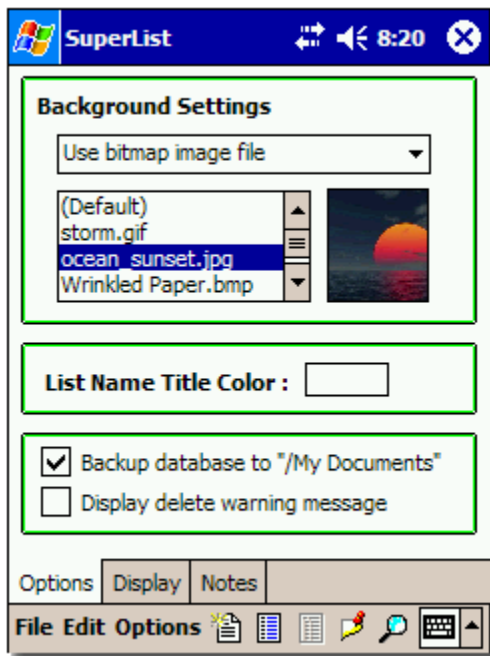


Figure 28
Selecting bitmap background images

If you had selected **Use bitmap image file** for the background settings, you would see the screen shown in Figure 28 below.

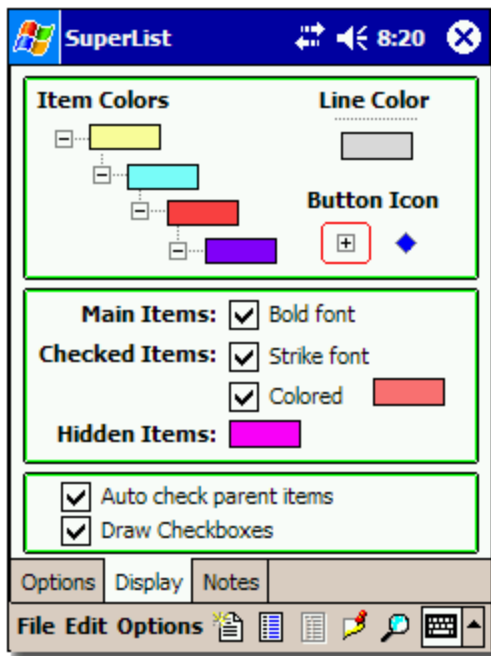
Here, you can select from available bitmap files found in the SuperList install folder. By tapping on any listed bitmap file, you will see a preview in the small window to the right of the listed bitmap files. The default bitmap image is a "clouds" background.

You can also change the color of the list name displayed at the top of the screen by tapping on the colored box to the right of the **List Name Title Color** label. The color picker control as shown in Figure 26 will appear, allowing you to select a new color.

If you check the **Backup database to "/My Documents"** option, a copy of the SuperList database file will be copied to the "**My Documents**" folder on your device as a backup. If you have ActiveSync configured to sync all files in this folder, your SuperList database will be backed up to your Desktop PC. The usefulness of this feature will be discussed later in this document.

Checking the **Display delete warning message** will cause SuperList to display a message box warning you whenever you try to delete an item from a list.

Figure 29 shows the **Display** tab screen, where you can adjust different parameters for the list display appearance. The text color used for the different levels of branches can be defined here, by tapping on the colored box to bring up the color picker control.



You can also define a color for the dashed lines connecting the different items on the screen under **Line Color**.

The **Button Icon** allows you to define which icon graphic to use for the displayed list. To select an icon, just tap on either one.

You can also specify if you want the main items to be displayed with a bold font (by checking **Main Items**), and if you want checked items to be displayed using a strike-thru font. Also with the checked items, you can have the text drawn using a defined color.

Hidden Items allows you to define the color for items marked hidden in your list.

The **Auto check parent items** option will cause SuperList to automatically check parent items if it's sub-items are all checked off. Figure 30 illustrates how this would work. The parent item will also be unchecked if any of the sub-items to that parent are unchecked.

Figure 29
Display tab screen

You also have the option of displaying or hiding the list's checkboxes by checking the **Draw Checkboxes** option. If you deactivate this feature, then the "Checked Items" Strike-font and colored options will also be deactivated.

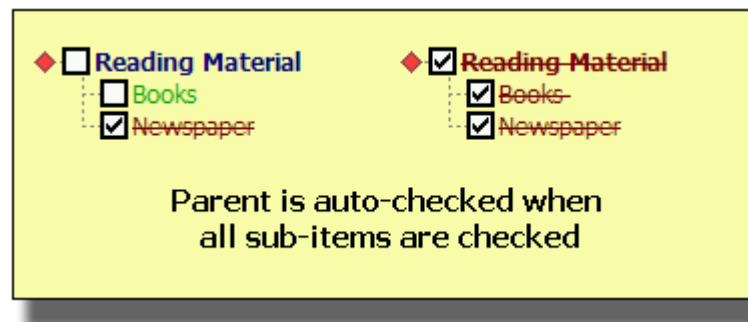


Figure 30
Illustration of the auto-check parent feature

The last settings panel is called "Notes", and it allows you to change some of the notes window properties (Figure 31).

Here, you can set the note window's background color, text color, and text font size. You can also specify the height of the note window by defining the number of lines to be displayed.

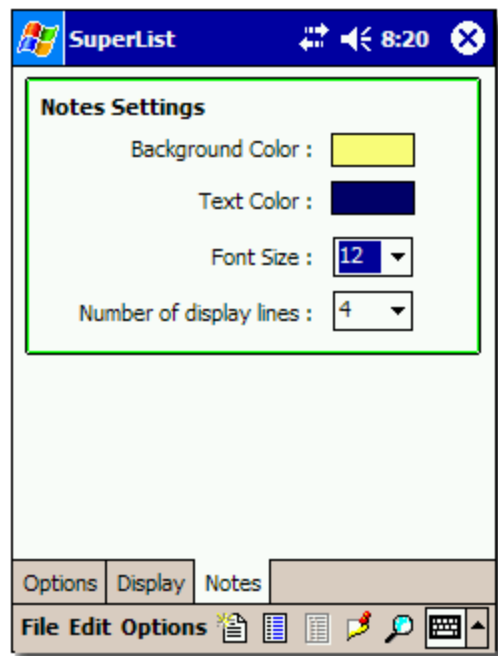


Figure 31
Notes Window Settings

List Password Protection

As stated earlier, assigning a password to a specific list will prevent others from seeing those items in that list. The data in the list is not encrypted. So when you try to open a list that has an assigned password, you will see the screen shown in Figure 32. Tapping on the screen will bring up the Password DialogBox (Figure 33), where you will need to enter the correct password to view the list's contents.



Figure 32
Password protected screen



Figure 33
Entering password to unlock list

If you don't enter a password, the only operations you can perform to the current list is to delete it. You can specify different passwords to different lists in your database. Also, if you forget a password for a list, there won't be a way to unlock it.

Hardware Key Functionality

For one-handed operation, SuperList can respond to either the D-Pad hardware button (on the front of most Pocket PC devices) or the side scroll button. Using the hardware buttons can make it easier for you to scroll through a list and check items without the need of pulling out the stylus for screen tapping.

Moving either of these buttons up or down will allow you to quickly change the currently selected item. By clicking either button, you can either check or uncheck a currently highlighted item.

Also, clicking the D-Pad button to the left will collapse the sub-item branch for a highlighted parent item, and clicking the D-Pad button to the right will expand the branch.

Recovering Data from Backup Database

There may a situation when you may lose your SuperList database file (because you needed to do a hard-reset of your device, or your battery power completely drained for some reason). If you have the "**Backup Database to \My Documents**" checked in the Options panel (Figure 25), a copy of the SuperList database (superlist.vol) will be placed in the "**\My Documents**" folder on your Pocket PC device, which should be synced to your Desktop PC system's AutoSync folder.

In the event of your Pocket PC device crashing or you having to do a hard-reset (which will erase all programs and data from your device), you'll need to reload the SuperList software on your Pocket PC device. If you want to recover the data stored in the backup copy of your SuperList database file, you should do the following:

1. Establish a connection between your Pocket PC device and your Desktop PC system, and do a file sync. Make sure you have "Files" checked in the ActiveSync options panel.
2. Install SuperList onto your device.
3. Run SuperList on your device. The program should see that you don't have an existing database file on your device, and should then automatically check your "**\My documents**" folder for a copy of the database file. If it finds it, the program will show the following message box (Figure 34) asking if you want to recover from the backup copy. Selecting "Yes" will recover your SuperList data in the backup database file.



Figure 34
Database recovery DialogBox

Import List Format

SuperList has the ability to import a list of items from a simple text file, which can make entering numerous list items very easy. You simply create a text file on your Desktop PC with each list item on a separate line, and then copy this text file over to your **"/My Documents"** folder for syncing with your Pocket PC device. Figure 35 shows what a typical text file would look like in the **NotePad** application on a Desktop PC.

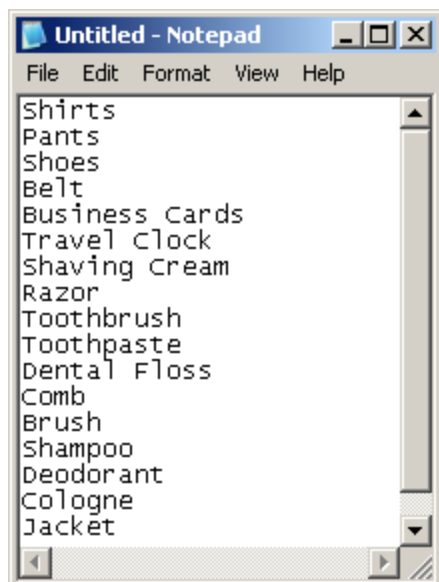


Figure 35
Simple text file in NotePad

You can also define sub-items in the text file by using **Tab characters** to define the different levels of sub-items. For example, let's say you have a main item called **"Clothes"** and under this item you have two sub-items called **"Shirts"** and **"Pants"**. The corresponding text file would look like what is shown in Figure 36, where you have one tab character before the **Shirts** and **Pants** line entry.

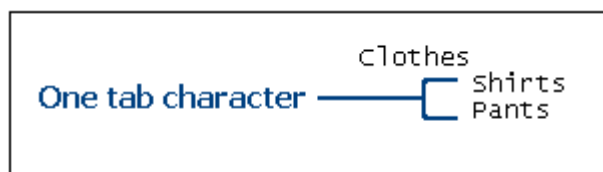


Figure 36
Text file with defined sub-items

You can use more than one tab character to define different sub-item levels as well. For example, let's say you have the text defined in Figure 37, which after importing into SuperList would look like Figure 38.

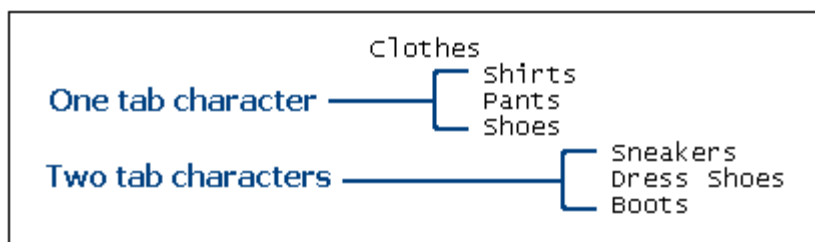


Figure 37
Text input file



Figure 38
Imported list in SuperList

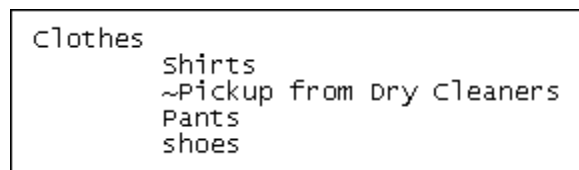
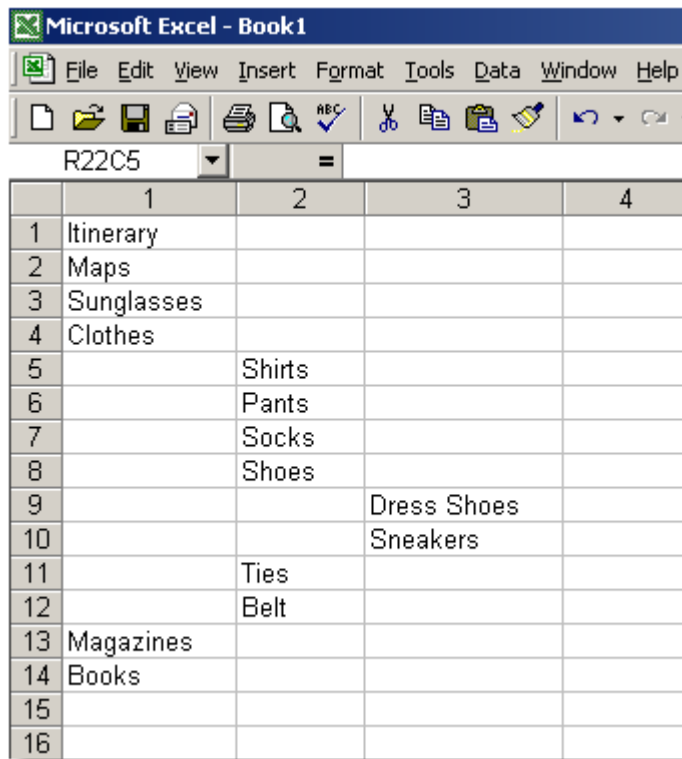


Figure 39

If you want to define a note attached to an item, you simply need to put another line after the item with a **"~"** character in front of the note text (as shown in Figure 39).

Care must be taken when creating text files to ensure that the number of tabs used per line is valid for sub-item definition. If you have too many tabs in the wrong location of the text file, SuperList will abort the importing process.

Another convenient way to generate lists for import into SuperList, is to use an MS-Excel which will automatically create tab characters for separating the different columns in your spreadsheet. For example, Figure 40 shows a simple list created in MS-Excel with different sub-item levels.



	1	2	3	4
1	Itinerary			
2	Maps			
3	Sunglasses			
4	Clothes			
5		Shirts		
6		Pants		
7		Socks		
8		Shoes		
9			Dress Shoes	
10			Sneakers	
11		Ties		
12		Belt		
13	Magazines			
14	Books			
15				
16				

The main item **Clothes** has sub-items of **Shirt, Pants, Socks, Shoes, Ties, and Belt**, while the item **Shoes** also has sub-items **Dress Shoes and Sneakers**.

Now, if you save this spreadsheet as a "Tab Delimited Text" file as shown in Figure 41, the file will be saved in a text file format with the properly placed tabbed characters.

Figure 40
MS-Excel Spreadsheet layout

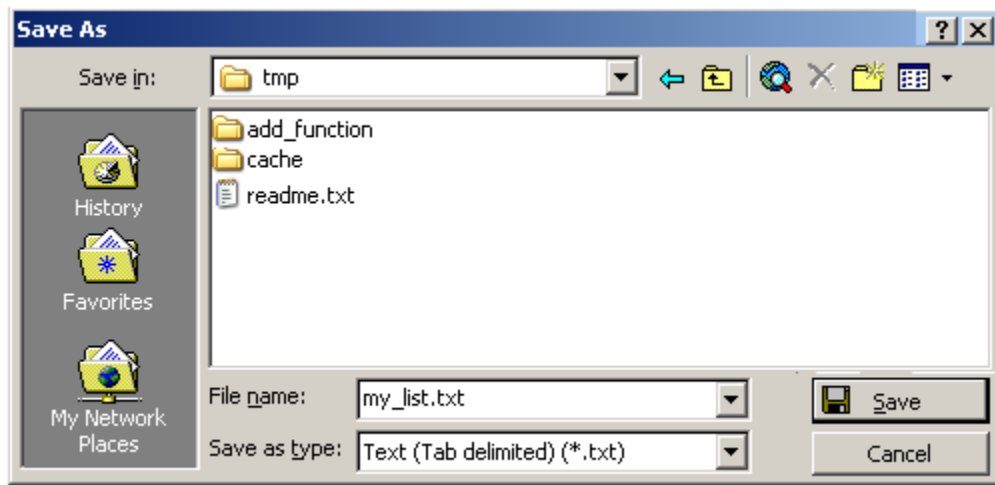


Figure 41
MS-Excel "Save As" Tab delimited text file

Now, if you copy the file you just created over to the "/My Documents" folder on your Pocket PC device, you can import the list into SuperList and it will look like what is shown in Figure 42.



Figure 42
Imported List

Export List Format

You can export the current list into a text file by selecting **Export List** from the File Menu. The resultant text file will have the same characteristics as described in the "Import List Format" section of this guide, containing tab characters at appropriate locations to represent the sub-item levels. Attached notes are also exported.

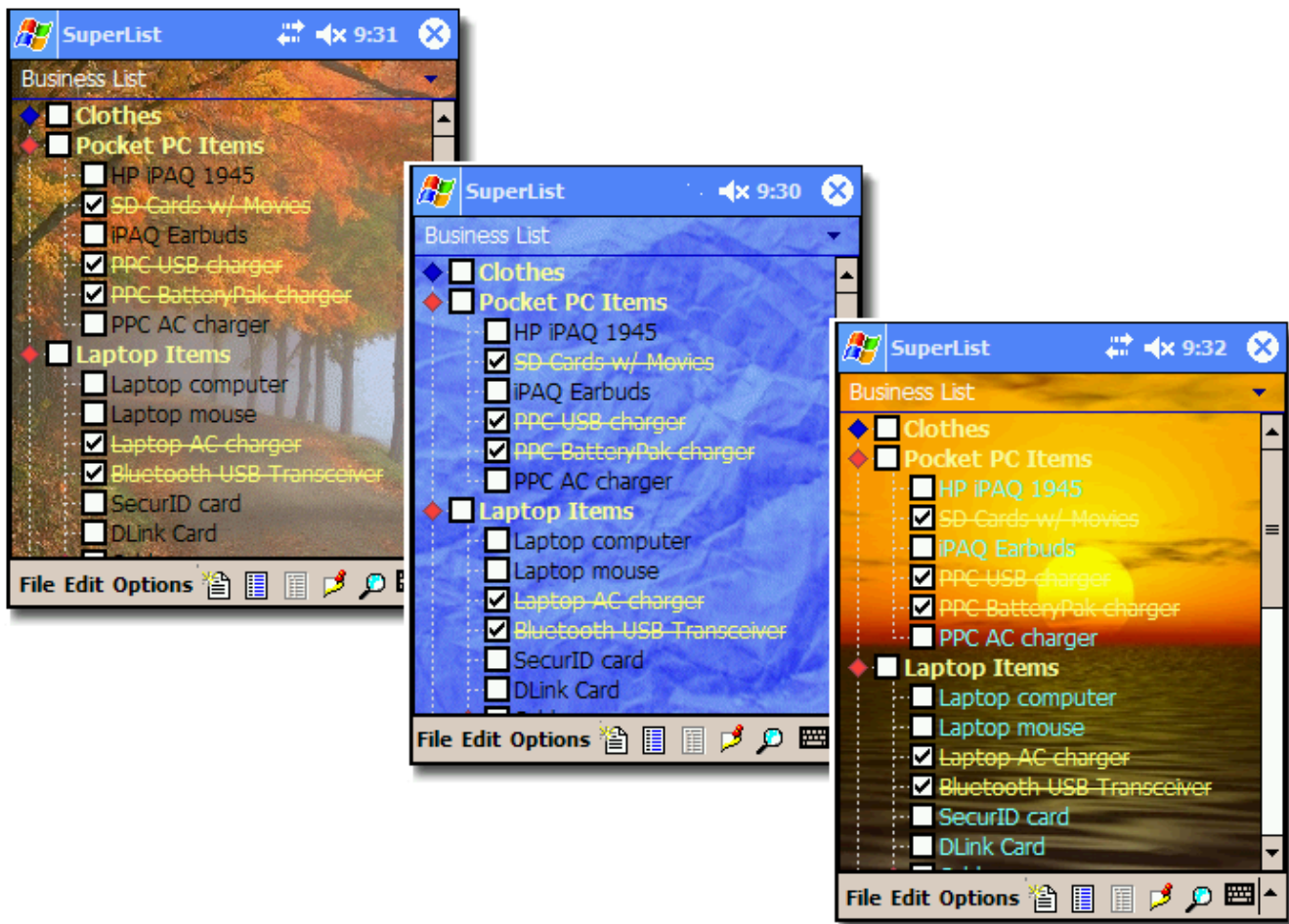
Custom Background Image Format

On the screen shown in Figure 25, the user can select from a list of custom background images. These images can be bitmap (.bmp), jpeg (.jpg), or gif (.gif) files stored in the SuperList install folder on your Pocket PC device. These images will need to have a minimum size of 240 by 268 to sufficiently fill the background of the screen for SuperList. Larger images will be cropped appropriately. Simply create your background images using any paint program on your Desktop PC (e.g., Photoshop, PaintShop Pro, MS-Paint, etc.) and save it as a bmp, jpg, or gif file. Then, use File Explorer on your Desktop PC to copy the bitmap files over to your connected Pocket PC device, into the SuperList install folder.

By default, the install folder is: **/Program Files/ScaryBear Software/SuperList**

You should find several sample image files already in the install folder, along with the [superlist.exe](#) executable file and [superlist.vol](#) database file.

Using these bitmap background images can really enhance the graphical appearance of your displayed lists. Note, you can assign different background images (or solid color background) to each specific list. The figure below shows a few different background images with SuperList. New lists that are created will use the currently active background settings by default, and can be changed at any time.



Different background images for SuperList

Possible Performance Issues

Depending on your Pocket PC device model, SuperList may operate slower under certain conditions. For the fastest possible operation, it is recommended that you select the **"Use Solid Color"** background settings option (Figure 26). Using this option will maximize the speed in scrolling through the list and also for the drag-n-drop operations.

Activating the **"Use bitmap image file"** will result in a slower response for scrolling and dragging since the system must redraw the background image during these operations. For the newer faster Pocket PC devices, this shouldn't be a problem. If you're using SuperList on an older, slower device, you may see some significant slowness with the background bitmap feature activated.

Also, installing SuperList on to an external CF or SD storage card may affect the performance of the application, since it must read from and write to the storage card. For best performance, install SuperList in the default location (in main memory).

Uninstallation

If you have a need to uninstall SuperList from your system, you can use the standard **"Remove Programs"** utility provided on all Pocket PC devices. Once you go through the removal process, all files associated with SuperList should be removed from your system.

Final Comments

Upgrades to SuperList are always free, and can be downloaded from our web site at www.scarybearsoftware.com. Your existing valid 12-digit reg key code will also activate any future versions. If you'd like to be notified of future updates SuperList, you can join the ScaryBear Software News YahooGroups! From this link: <http://www.scarybearsoftware.com/news.html>