



MCCI

3520 Krums Corners Road

Ithaca, New York 14850 USA

Phone +1-607-277-1029

Fax +1-607-277-6844

www.mcci.com

InstallRight Pro User's Guide

Engineering Report 950225

Rev. A

Date: 02/03/2003

Copyright © 2003
All rights reserved

PROPRIETARY NOTICE AND DISCLAIMER

Unless noted otherwise, this document and the information herein disclosed are proprietary to Moore Computer Consultants, Incorporated, 3520 Krums Corners Road, Ithaca, New York 14850 ("MCCI"). Any person or entity to whom this document is furnished or having possession thereof, by acceptance, assumes custody thereof and agrees that the document is given in confidence and will not be copied or reproduced in whole or in part, nor used or revealed to any person in any manner except to meet the purposes for which it was delivered. Additional rights and obligations regarding this document and its contents may be defined by a separate written agreement with MCCI, and if so, such separate written agreement shall be controlling.

The information in this document is subject to change without notice, and should not be construed as a commitment by MCCI. Although MCCI will make every effort to inform users of substantive errors, MCCI disclaims all liability for any loss or damage resulting from the use of this manual or any software described herein, including without limitation contingent, special, or incidental liability.

MCCI, TrueCard, TrueTask, MCCI Catena, and MCCI USB DataPump are registered trademarks of Moore Computer Consultants, Inc.

MCCI Instant RS-232 and MCCI Wombat are trademarks of Moore Computer Consultants, Inc.

All other trademarks and registered trademarks are owned by the respective holders of the trademarks or registered trademarks.

Copyright © 2003 by Moore Computer Consultants, Incorporated

Document Release History

Draft 1	12/15/2002	Created
Draft 2	2/3/2003	corrections
Rev. A	2/5/2003	First Release

TABLE OF CONTENTS

TABLE OF CONTENTS.....	iii
1. Introduction.....	1
2. Glossary	1
3. Requirement for Inf Files	1
4. InstallRight-Pro install utility	1
4.1 Running Setup.exe.....	2
4.2 Command Line Switches.....	3
4.3 Explanations:.....	3
5. InstallRight-Pro uninstall utility.....	3
5.1 Running XXXXUninstall.exe.....	3
5.2 Command Line Switches.....	5
Figure 1 – Ready to Install	2
Figure 2 – Browse for Folder	2
Figure 3 – Driver Installed Successfully Window	2
Figure 4 – Add/Remove Programs Window.....	4
Figure 5 – Uninstall Driver Window	4
Figure 6 – Successful Software Removal Window	4
Figure 7 –Restart Computer Window	5

1. Introduction

InstallRight-Pro™ is the new, effective, and safe alternative to the default Windows® “Hardware Wizard” for “Plug-n-Play” USB devices. InstallRight-Pro seamlessly handles the operating system procedures for a complete installation of USB peripherals. InstallRight-Pro pre-installs the necessary driver components and deals with the installation variations ensuring optimum device functionality across Windows platforms. The uninstall function assures both a safe and complete removal of installed components in compliance with the associated Windows platform. InstallRight-Pro can be integrated with other installation routines offering maximum flexibility and utility.

2. Glossary

Install utility, installer. InstallRight-Pro install utility

Setup.exe. InstallRight-Pro install utility executable file name

Uninstall utility, uninstaller. InstallRight-Pro uninstall utility

XXXXUninstall.exe. InstallRight-Pro uninstall utility executable file name

Inf file. Device installation information file

Distribution medium. Storage medium in which device driver files and install/uninstall utility executables are contained which end-users may utilize to install device driver files.

Install folder. Hard disk folder to which the install utility copies device driver files and uninstall utility executables from the distribution medium.

3. Requirement for Inf Files

The Install utility requires that all inf files which would be used to install device drivers must have the following string value in the strings section of the corresponding inf files. In other words, the install utility considers only inf files that have the following valid string values.

[strings]

```
McciOptions = "Uninstallable"
```

4. InstallRight-Pro install utility

The Installer searches the folder where the installer executable is located in the distribution medium for valid inf files, and then copies pertinent driver binaries, inf files and uninstaller executables from the distribution medium to the install folder. After copying, the installer

InstallRight Pro User's Guide

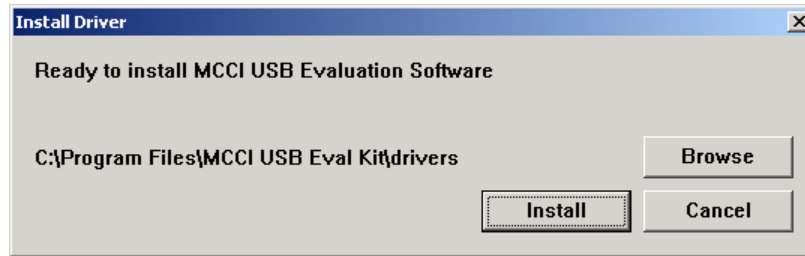
Engineering Report 950225 Rev. A

initiates the pre-installation so that Windows can find the driver files when the user plugs the USB device in the next time.

4.1 Running Setup.exe

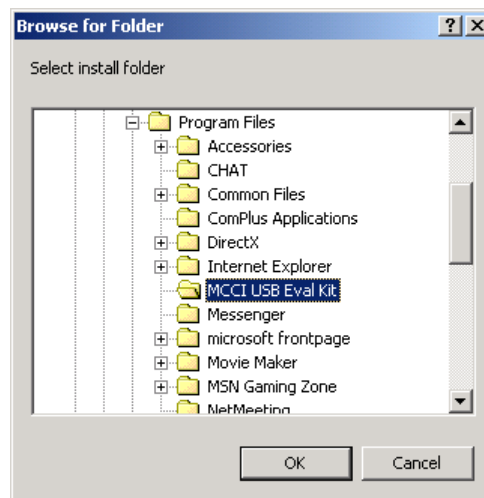
The first user operation is to make certain that the USB device is not plugged-in. Then double-click **setup.exe**

Figure 1 – Ready to Install



If you wish to change the install folder, click on the **Browse** button.

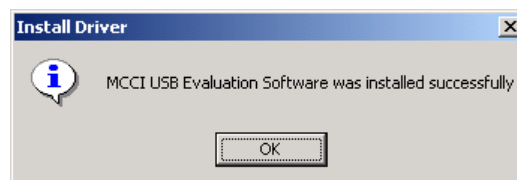
Figure 2 – Browse for Folder



You may specify the install folder in the **Browse for Folder** window

Then click **Install**

Figure 3 – Driver Installed Successfully Window



After drivers are installed successfully, the above pop-up window appears.

4.2 Command Line Switches

The Installer can be invoked as shown below with command line switches on the DOS prompt.

```
Setup [-quiet] [-targetdir "C:\Program Files\MCCI"] [-skip_copy]
```

4.3 Explanations:

- -quiet. This prevents the installer from displaying a GUI window. This is used when other high level software calls on the installer to install a driver but the GUI display is not desired.
- -targetdir : This specifies the hard disk folder where the driver files are copied. Double quotes must enclose the directory path to permit spaces in it. Driver files (both INF files and driver binary files) are copied to specified hard disk folder from the distribution medium which can be, for example, a CD-ROM, other hard disk folder, or network folder, etc. The meaning of this switch is different when used together with the -skip_copy switch.
- -skip_copy : This prevents the installer from copying the driver files to a hard disk folder. This switch must be used with the -targetdir switch which specifies the distribution medium where the driver files are located. This switch is intended to be used when other high level software copies the driver files to a hard disk folder and calls on the installer to install the driver.

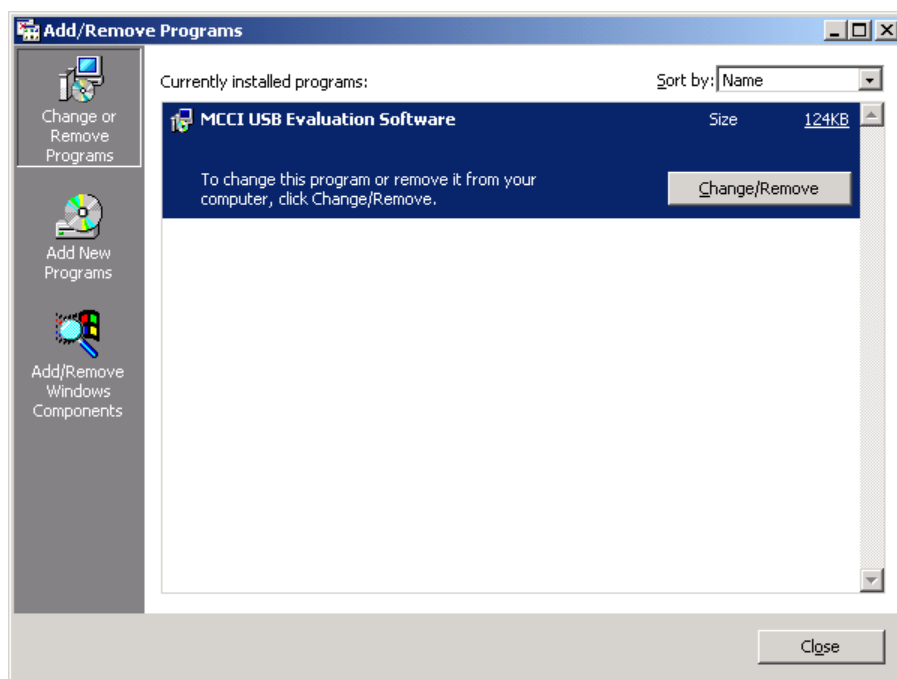
5. **InstallRight-Pro uninstall utility**

XXXXUninstall.exe (the first four characters of the uninstaller executable file name is decided by the custom driver branding) is copied to the install folder and a new item is added to the **"Add/Remove Programs"** after running the installer successfully.

5.1 Running XXXXUninstall.exe

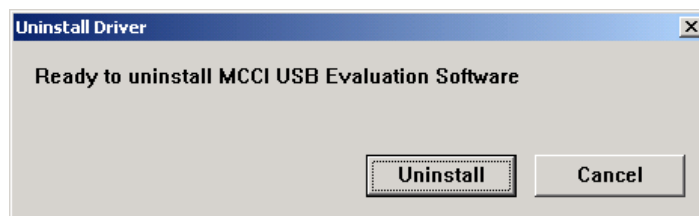
The first user operation in driver uninstallation is to click the **"Change/Remove"** button in the **Add/Remove Programs** window or double-click the XXXXUninstall.exe in install folder.

Figure 4 - Add/Remove Programs Window



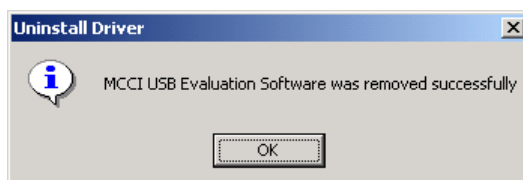
The first user operation in driver uninstallation is to click the **“Change/Remove”** button in the **Add/Remove Programs** window or double-click the XXXXUninstall.exe in install folder. The uninstaller shows a prompt popup window asking for confirmation from the user

Figure 5 - Uninstall Driver Window



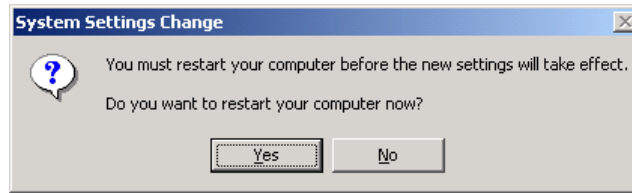
To continue the uninstall, please click the **uninstall** button in the confirmation window.

Figure 6 - Successful Software Removal Window



After the drivers are uninstalled successfully, the above pop-up window appears.

Figure 7 -Restart Computer Window



If your Windows Operating System requires rebooting, the Restart Computer prompt will appear.

5.2 Command Line Switches

The Uninstaller can be invoked as below with a command line switch on the DOS prompt.

```
XXXXUninstall [-quiet] [-leave_source]
```

Explanations:

- **-quiet** : This prevents the installer from displaying any GUI windows. This is intended to be used when other high level software calls on the uninstaller to uninstall a driver but does not want the GUI that the uninstaller displays.
- **-leave_source** : This prevents uninstaller from deleting the driver install folder. This is intended to be used when other high level software is using the install folder.