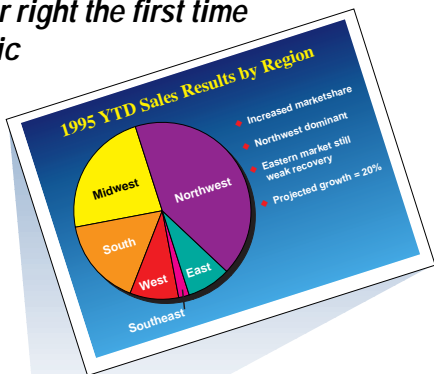


Colorific Color Matching Software

Get the color right the first time with Colorific



Colorific User's Guide

Disclaimer/Limited Warranty

WARNING! THIS PRODUCT IS NOT DESIGNED FOR USE IN LIFE SUPPORT DEVICES AND SONNETECH, LTD. AND ITS LICENSEES MAKE NO REPRESENTATIONS TO THE CONTRARY. LIFE SUPPORT DEVICES ARE THOSE DEVICES WHICH ARE USED TO MEASURE, DIAGNOSE, OR EVALUATE THE TISSUE, SYSTEMS, OR FUNCTIONS OF THE HUMAN BODY; OR OTHER DEVICES EMPLOYED TO SUPPORT OR SUSTAIN LIFE OR GOOD HEALTH.

INTERNATIONAL COLOR CONSORTIUM FORMAT PROFILES GENERATED BY THE SOFTWARE MAY BE USED ON A SINGLE COMPUTER SYSTEM CONTAINING THE COPY OF THE SOFTWARE WHICH GENERATED SAID PROFILES AND THE PROFILES MAY BE EMBEDDED WITHIN COLOR IMAGES CREATED ON SAID SINGLE COMPUTER SYSTEM. ALL OTHER RIGHTS, INCLUDING WITHOUT LIMITATION THE RIGHTS TO SHIP AND/OR DISTRIBUTE SAID PROFILES WITH ANY COMPUTER SYSTEMS, MONITORS, AND/OR OTHER COMPUTER HARDWARE AND/OR SOFTWARE ARE EXPRESSLY RESERVED BY SONNETECH, LTD.

THIS SOFTWARE IS PROVIDED AS A SERVICE AND IS NOT FOR SALE OR RESALE. SONNETECH, LTD. MAKES NO WARRANTY OR REPRESENTATION, EITHER EXPRESS OR IMPLIED, WITH RESPECT TO THIS SOFTWARE OR ITS MEDIA, OR ITS QUALITY, PERFORMANCE, MERCHANTABILITY, OR FITNESS FOR A PARTICULAR PURPOSE. IN NO EVENT WILL SONNETECH, LTD. OR YOUR MONITOR MAKER BE LIABLE FOR DIRECT, INDIRECT, SPECIAL, INCIDENTAL, OR CONSEQUENTIAL DAMAGES RESULTING FROM ANY DEFECT IN THE SOFTWARE, ITS MEDIA OR ITS DOCUMENTATION. NO PERSON IS AUTHORIZED TO MAKE ANY WARRANTY ON THIS SOFTWARE. COLORIFIC CANNOT BE RESOLD IN ITS CURRENT OR ANY MODIFIED FORM WITHOUT SONNETECH'S WRITTEN APPROVAL. COLORIFIC IS THE PROPERTY OF SONNETECH, LTD. AND ITS LICENSORS AND IS PROTECTED BY ITS COPYRIGHT NOTICE.

SONNETECH'S LICENSORS DO NOT WARRANT, GUARANTEE OR MAKE ANY REPRESENTATIONS REGARDING THE USE OR THE RESULTS OF THE USE OF THE SOFTWARE IN TERMS OF ITS CORRECTNESS, ACCURACY, RELIABILITY, CURRENTNESS OR OTHERWISE. THE ENTIRE RISK AS TO THE RESULTS AND PERFORMANCE OF THE SOFTWARE IS ASSUMED BY YOU. THE EXCLUSION OF IMPLIED WARRANTIES IS NOT PERMITTED BY SOME JURISDICTIONS. THE ABOVE EXCLUSION MAY NOT APPLY TO YOU.

IN NO EVENT WILL SONNETECH'S LIABILITY IN CONNECTION WITH THIS AGREEMENT EXCEED THE AMOUNT PAID TO SONNETECH BY USER OR BY THE MONITOR MAKER ON THE USER'S BEHALF. THIS LIMITATION APPLIES TO ALL CAUSES OF ACTION IN THE AGGREGATE, INCLUDING WITHOUT LIMITATION, BREACH OF CONTRACT, BREACH OF WARRANTY, SONNETECH'S NEGLIGENCE, INTELLECTUAL PROPERTY INDEMNITY, STRICT LIABILITY, MISREPRESENTATION AND OTHER TORTS.

IN NO EVENT WILL SONNETECH'S LICENSORS, AND THEIR DIRECTORS, OFFICERS, EMPLOYEES OR AGENTS (COLLECTIVELY SONNETECH'S LICENSOR) BE LIABLE TO YOU FOR ANY CONSEQUENTIAL, INCIDENTAL OR INDIRECT DAMAGES (INCLUDING DAMAGES FOR LOSS OF BUSINESS PROFITS, BUSINESS INTERRUPTIONS, LOSS OF BUSINESS INFORMATION, AND THE LIKE) ARISING OUT OF THE USE OR INABILITY TO USE THE SOFTWARE EVEN IF SONNETECH HAS BEEN ADVISED OF THE POSSIBILITY OF SUCH DAMAGES. BECAUSE SOME JURISDICTIONS DO NOT ALLOW THE EXCLUSION OR LIMITATION OF LIABILITY FOR CONSEQUENTIAL OR INCIDENTAL DAMAGES, THE ABOVE LIMITATIONS MAY NOT APPLY TO YOU.

Table of Contents

Introduction	2
System Requirements	2
Printing the Read Me File	2
Before Running Colorific	3
Installing Colorific	4
On-screen Help	4
Running Colorific — 7 Steps	4
After Running Colorific	8
Printer Profiles/Drivers	11
Troubleshooting	12
Uninstalling Colorific	14
True Internet Color™	15
A Little Bit About Color	16
Technical Support	Back cover

Colorific Color Matching Software

One of the problems with today's computers and printers is that the colors you see on your monitor vary and they often don't match the colors you see on the printed output. Now there's a solution. It's called Colorific.

Colorific software gives you accurate, predictable color matching between your screen and printer by calibrating the colors on your monitor. Colorific constructs a precise description of how your monitor displays color, taking into account variable viewing conditions, monitor control settings, and video card adjustments.

Colorific also provides True Internet Color™ when you view or create Web graphics. See page 16 for a fuller discussion of True Internet Color.

Lastly, Colorific uses features within newer video cards to provide consistent color for users doing 3D rendering or design. It also adjusts the color balance of your display to optimize it for a particular computing task.

System Requirements

Windows	386 or better, Windows 3.1, 3.11 or Windows 95, 2 MB free space on hard disk, 4 MB RAM. For Windows 95, your printer must be fully Windows 95-compliant (i.e., support ICM, Image Color Matching)
Macintosh	System 7.1 or above, 1 MB free space on hard disk. Your printer must be fully Macintosh compatible (i.e., must support ColorSync® 2).

Printing the Read Me File

Before installing Colorific, take a minute to print a copy of the Read Me file found on the installation disk. (Use a word processing application to open and print the file README.TXT.) The Read Me file contains last-minute information about your particular version of Colorific, which is not included in this manual or in the on-screen Help.

Before Running Colorific

To obtain the best color matching results, do the following *before* you run Colorific:

- ◆ Let your monitor warm up for at least 30 minutes to stabilize the colors.
- ◆ Make sure the glass faceplate of your monitor is clean and free of dust.
- ◆ If your monitor has a degauss button, press it.
- ◆ If your monitor has a color temperature control or manual RGB color controls, adjust them to your liking. Rerun Colorific if you ever change these controls.
- ◆ If your monitor has a color temperature control, you'll get the best results if you adjust it to 5000K or 6500K. Rerun Colorific if you ever change this control.

Important: Using Colorific in conjunction with another color management system or monitor calibrator already installed on your computer might result in poor color matching. Consult Colorific's on-screen Help, fax-on-demand and technical support (415-957-9941), or web site (www.colorific.com) for information about using Colorific with different color applications to produce optimal calibration.

Installing Colorific

Insert the Colorific installation disk or CD-ROM into the appropriate drive and follow the instructions for your operating system:

- Windows 95 Click on the Windows 95 **Start** button, then choose **Run**. Type `a:\setup` and press **Enter** (if applicable, substitute the appropriate drive letter for `a:`).
- Windows 3.1/3.11 Choose **Run** from Program Manager's **File** menu. Then type `a:\setup` and press **Enter** (if applicable, substitute the appropriate drive letter for `a:`).
- Macintosh Double-click on the **Colorific Installer** icon, then drag the **Full Installation** icon to the drive on which you want to install Colorific.

On-screen Help

Colorific's on-screen Help offers troubleshooting tips and detailed calibration instructions. When running Colorific, choose **Help** (in the upper-right corner of your screen) or press the **F1** key (Windows only) to view the Help screen that relates to what you're doing. After calibrating, use the Help table of contents or Search command (Windows only) to find information about using Colorific with specific applications.

Running Colorific — 7 Steps

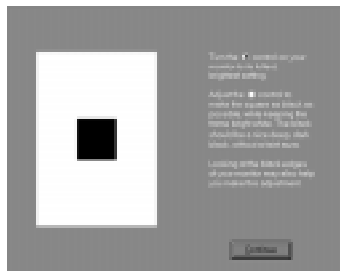
For best results, run Colorific before doing critical color work or whenever you change the color settings of your monitor. To run Colorific:

- Windows 95 Click on the Colorific Control Panel icon in the taskbar or the Colorific program group. Then click on the **Recalibrate** button.
- Windows 3.1/3.11 Double-click on the Colorific icon in the Colorific program group.
- Macintosh Double-click on the Colorific icon in the Colorific folder.

1. Monitor/Printer Setup Screen

Choose your monitor model. (If it isn't listed, contact the monitor manufacturer to obtain the appropriate version of Colorific.)

If you are a Windows 3.1 or 3.11 user, you will also need to select a printer profile for your printer. If you can't find the correct printer profile, contact Colorific. In the interim, select a profile for a similar printer from the same manufacturer, if available. Or, select Generic CMYK. Use the Other Printer... choice only if you have a printer profile on disk that you'd like to install.



Brightness Adjustment

2. Brightness Adjustment Screen

Adjust the brightness control on your monitor so that both black and white boxes are crisp and don't stray into gray. (There is no wrong adjustment.) Once set, don't change the setting.

3. Monitor Gamma Measurement

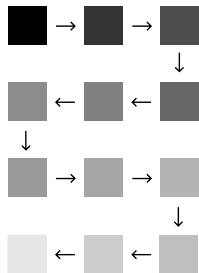
Pick the square that appears to blend into the background. You can choose a spot halfway between two squares if you feel that would be more precise. For best results, try to blur your vision by squinting or removing your glasses, if you wear them, to sense an overall tone and *not notice the colored stripes*. The 12 squares are organized in increasing brightness along an "S" shaped path (see *next page*).



Monitor Gamma Screen

You will perform variants of this task twice for each color—red, green, and blue. Colorific uses the information from these screens to determine the monitor's gamma for each primary color.

Gamma is a measure of the relationship between the brightness of the color you see on your screen and the signal that your computer is sending to the monitor.



S-shaped Path

4. Black Point Measurement

You can choose any spot on this path. Pick the place where you feel there is just a hint of color. You must choose a specific spot, for, unlike the gamma screen, there is no in-between. The 12 spots are organized in increasing brightness along an “S” shaped path. You will perform this task once for each color—red, green, and blue.

Colorific uses the information from these screens to determine the monitor's black point cut-off value for each primary color.

5. White Point Measurement

Telling Colorific your type of room lighting

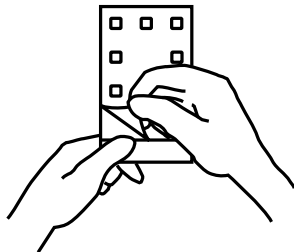
You will now be prompted to select a type of lighting from the menu displayed by the Colorific program. Using your chosen light source, make your work area as bright as possible. (It is OK if you don't normally work under such bright lights. You can restore your normal lighting after running Colorific.)

Putting the Color Reference Card on your monitor

After selecting the light source a new screen will appear. Remove the Colorific Color Reference Card from its white cardboard backing and apply it to the monitor in the space indicated on the screen. (If it doesn't stick, clean the back of the card with alcohol and the glass of your monitor with an appropriate glass cleaner.)

Turn the contrast control all the way down, then slowly up. Squint, looking at both edges of the card simultaneously. Find a setting where the brightness of both card and screen seems about the same. (Remember, you're matching *brightness* not color.)

If the card is too dark, bring additional lights of the proper type closer to the monitor for this step. It doesn't matter if you normally work under different lighting conditions; the measurement will still be accurate.



Remove the Colorific Color Reference Card from its cardboard backing.

Selecting the matching square

Leave the Colorific Color Reference Card on your screen and click OK. A new screen will appear with color patches appearing through the clear square areas in the card. Choose the square where the color best matches the color of the Colorific Color Reference Card. (Remember, now you're matching *color* not brightness.) Choose a specific square; there is no in-between option available. Don't worry if your choice isn't an exact match. If the pointer is hard to see behind the card, use the arrow along the side as a guide.

6. Creating Your Profile (Windows only)

Colorific is now creating a color correction profile for your monitor and printer. Remove the card from the screen and adjust the contrast control to a comfortable level. Do *not* change the brightness control.

The calibration process may take a while, but the gauge will track its progress. Once the bar reaches 100 percent, you will see a final screen from which you can restart Windows.

(If the final screen doesn't appear, Colorific was unable to create the profile. Read the "Troubleshooting" section in Colorific Help to correct the problem.)

7. Final Screen

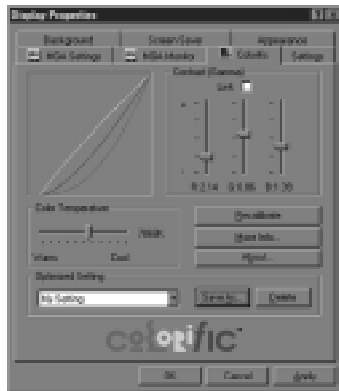
- Windows 95 You must restart Windows for the color correction profile to take effect. (If you decide not to restart now, your corrections will go into effect the next time you start Windows.)
- Windows 3.1/3.11 For the color correction profile to take effect, turn Colorific on with the ON/OFF switch and then click on **Restart Windows**.
- Macintosh Simply click on OK.

After Running Colorific

In most cases, Colorific color correction is automatically enabled as soon as you complete calibration and reboot Windows (for Macintosh, no system restart is required). For advanced users, or just for the curious, the following sections provide more information on how Colorific works within each operating system.

On Windows 95

Colorific creates a custom profile for your monitor for use with the ICM (Image Color Matching) module built into Windows 95. This profile automatically replaces Windows' default profile and is used at print-time whenever ICM is enabled. (If you don't see an ICM option in your color printer's driver, contact your printer vendor to obtain the latest Windows 95-compatible printer driver, or load the appropriate driver from Microsoft's Windows 95 installation disks.) For more information about ICM, consult Colorific's on-screen Help, fax-on-demand system and



Colorific v95.2 Control Panel (Windows 95)

technical support (415-957-9941), or web site (www.colorific.com).
(Request document #7004 from the fax-on-demand system.)

Colorific v95 can also work with the Kodak CMS if it is installed on your system. See the section "Kodak Color Management System."

The Colorific Control Panel displays information that Colorific gathered about your monitor, which can be used to customize settings within your applications.

Click on the Colorific icon (a monitor with a blue, red, and green design) in the Windows 95 taskbar to display the Control Panel. Then click on the **More Info . . .** button to view gamma, white point, and chromaticity data. Users of Photoshop and other high-end graphics programs will find this information useful in configuring the Monitor Setup sections of their applications. See Colorific's on-screen Help for details.

On some systems, the Colorific for Windows 95 Control Panel allows you to optimize the look of your monitor for video, desktop publishing, or other tasks by adjusting the white point and gamma of your display. If these options are not available on your system, try changing to 16-bit or higher color mode. If they are still not available, contact your video card maker for updated Windows 95 drivers. See the on-screen Help topic called "How to Contact your Video Card Maker" for more information.

On Windows 3.1 or 3.11

Colorific creates a Kodak Precision™ monitor-to-printer transform, which is used automatically every time you print, regardless of what program you're using. Simply choose "Yes" at the Colorific print-time prompt, and Colorific will adjust your printer's output to ensure great color matching.



Colorific v1.x Control Panel (Windows 3.1 or 3.11)

If you close or shrink all the windows on-screen, you'll see the Colorific/Kodak icon in the lower right-hand corner of the screen. If the icon is in color, Colorific is on, but if it's gray, Colorific is off. Double-click on the icon and the Colorific Control Panel will appear, allowing you to turn Colorific printer correction on or off.

On All Windows Versions—Kodak Color Management System

All Windows versions of Colorific create a Kodak Precision™ format monitor profile that can be used by any program that incorporates Kodak's Precision Color Management System, such as PhotoStyler, Picture Publisher, or PageMaker 6.0. Go to the Kodak CMS module within your application and select the Colorific monitor profile.

Having a color management system available inside an application you are using can be beneficial, but you do need to avoid inadvertently correcting color output twice. To safeguard against this you need to make sure only one color management system is enabled when printing:

Windows 95 Either turn off ICM (Image Color Matching) in your printer's properties settings *or* disable the application's print-time color correction.

Windows 3.1/3.11 Either choose "No" at the Colorific print-time prompt *or* disable the application's print-time color correction.

For detailed instructions on using Colorific with specific applications, consult Colorific's on-screen Help, fax-on-demand and technical support (415-957-9941), or web site (www.colorific.com).

On the Macintosh

Colorific creates a ColorSync 2.0 monitor profile which is used automatically each time you print with ColorSync. (If you don't see a ColorSync option in your printer driver, contact your printer manufacturer.) For desktop publishing and high-end graphics applications (such as Adobe Photoshop), select the Colorific profile in the monitor setup section of your graphics applications. Consult your application's documentation for help.

Printer Profiles/Drivers

Colorific works best if you have the correct profile for your particular printer installed. For Windows 95 and Macintosh, the profile is usually installed automatically as part of the printer driver. Colorific for Windows 3.1/3.11 uses Kodak printer profiles, a selection of which are included on the Colorific installation disk. A limited number of additional profiles are available from technical support on Colorific's web site. Others can be purchased from Kodak. Call Kodak at (800) CD-KODAK or (716) 726-7260 for pricing and ordering information.

Windows 95 users should contact their printer manufacturer to obtain the latest driver and ask if the driver fully supports the ICM module, including all three types of color matching offered by Windows 95: saturation (best for charts and diagrams), contrast/photographic (best for photographs or complex images), and colorimetric (best for matching particular colors, for example in logos). The Microsoft drivers included with Windows 95 all support ICM, but they usually offer only one type of color matching out of the 3 available through ICM.

Macintosh users must work with a printer that supports ColorSync 2 and comes with a ColorSync profile as part of its printer driver. Contact your printer vendor to obtain a ColorSync profile if you do not already have one. Be sure to enable ColorSync in your printer driver to achieve good color matching.

Macintosh users can also use any PostScript Level 2 or higher color printer. All PostScript Level 2 or higher printers using the PostScript v8.1 or higher printer driver support ColorSync. When using PostScript, select "Calibrated Color" in the printer driver to enable the use of ColorSync.

Troubleshooting

What to do if...

Printed colors don't match those on my monitor

1. Make sure you're using the correct paper for your printer. Inkjet printers require special coated paper. (See the Read Me file for recommended papers.)
2. Make sure the ink cartridges are working properly and that the ink isn't running low. Use a new cartridge if necessary.
3. Try recalibrating by running Colorific again. At the White Point Measurement screen, be sure to adjust your lighting as described in this manual or on-screen Help.
4. Windows 3.1/3.11 users, verify that the printer profile matches your printer. If your printer isn't listed in the Colorific Monitor/Printer Setup screen, try **Generic CMYK**. If the color match is still poor, see the Printer Profiles section in this manual.
5. For more detailed suggestions, request document #6503 (Windows) or #3503 (Macintosh) from Colorific's fax-on-demand system.

Colorific for Windows disk won't install

If Colorific Setup gives an error message or repeatedly asks for a missing disk, check to make sure you have the correct version for your operating system. Colorific for Windows 3.1/3.11 will not work under Windows 95, and vice versa. Contact your monitor maker or Colorific if you did not receive the correct version.

Some Windows 3.1/3.11 versions of Colorific use a compressed disk format that can't be copied using regular DOS or Windows file copy commands. In this case, be sure to install from the original Colorific disks. Also, Windows 3.1/3.11 network users who have trouble installing Colorific should try rebooting with no network connection.

Windows 3.1/3.11 won't boot after Colorific installation

If Windows 3.1/3.11 won't boot after Colorific installation, go to the Windows directory and rename the file SYSTEM.INI to SYSTEM.HGC. Then, rename the file CLRIFIC0.INI to SYSTEM.INI. You should now be able to run Windows normally.

If you are experienced with editing Windows system files, see below for details. Otherwise, contact Technical Support for help. If communicating by e-mail or fax, send a copy of the file you just renamed SYSTEM.HGC.

Colorific for Windows 3.1/3.11 changes the `system.drv=` line in Windows's SYSTEM.INI file. Other programs, such as Adobe Type Manager and Helix Software's Hurricane, also make changes to this line. Current versions of these programs work together fine if you follow the installation instructions in Colorific's Setup program. Conflicts could occur if some other program makes unanticipated changes to this `system.drv=` line.

Windows 95 boots in Safe Mode

If Windows 95 boots only in Safe Mode when Colorific is installed, you have probably installed the Windows 3.1 version of Colorific. Normally, the Colorific Setup program would not allow this to happen, but it could occur with an older version of Colorific or if you upgraded from Windows 3.1/3.11 to Windows 95 with Colorific already installed on your system. To correct the problem, uninstall Colorific by running the Colorific Setup program, just as you did to install, but choose the Uninstall option when it appears (usually in the second dialog box).

The white on my printout has a slight blue tint when I use Colorific

If you look closely, you will see that the white on your monitor does indeed have a slight blue tint. If you want less blue, try changing the white point (color temperature) of your display to be closer to the white of paper (5000K). If you don't have a color temperature control, try re-running Colorific and choosing a square 1 to 3 places counterclockwise from the proper choice at Colorific's White Point screen. Then print again.

Uninstalling Colorific

- Windows 95 Use the right mouse button to click on the Colorific icon (a monitor displaying a blue, red and green design) in the Windows 95 taskbar. Choose Exit from the menu that appears. Then, from the Start menu, choose Settings/Control Panel. Double-click on Add/Remove Programs. Choose Colorific for Windows 95 from the list, then click on the Add/Remove button.
- Windows 3.1/3.11 Follow the steps for installing Colorific, but choose the Uninstall button when it appears. To uninstall manually, follow the instructions in the README.TXT file on the Colorific installation disk or in the Colorific directory, or request document #2009 from the Colorific fax-on-demand system.

WARNING! Do *not* attempt to uninstall Colorific from Windows 3.1/3.11 by simply deleting the Colorific directory. If you do, you will be unable to reboot Windows!

- Macintosh Drag the Colorific folder to the trash. To undo the changes Colorific made to ColorSync, open the ColorSync Control Panel and select a different monitor profile.

True Internet Color™

Colorific works in conjunction with browsers, tools, and plug-ins from other Internet-related companies to provide accurate color when you view or create Web sites. Similar to other Web plug-ins, True Internet Color has two parts—the first part lets a designer create color-correctable Web pages, the second part lets consumers view those pages with True Internet Color.

Web Authoring

Colorific measures the Web designer's monitor and stores that custom data in an industry-standard ICC (International Color Consortium) format. Web design software can then use this data to embed "color tags" capturing the "look" of the images as seen on the designer's own display, not just the literal content. These tags enable the site to offer True Internet Color.

Web Viewing

Your monitor is the output device for Internet color. Color biases of your monitor must be measured and counterbalanced to display colors accurately over the Internet. By running Colorific, you provide ICC color data about your monitor that can be used to provide Internet color correction.

Experience True Internet Color

Every day more Web sites are implementing True Internet Color. Visit the following sites to learn about Web tools and sites that are compatible with Colorific's color calibration technology:

www.colorific.com/products/tic1.html
www.sgi.com/Products/cosmo/color/
[www.adobe.com/prodindex/acrobat/
2lplugins.html#monitor](http://www.adobe.com/prodindex/acrobat/2lplugins.html#monitor)
www.pantone.com

A Little Bit About Color

One of the most important things about color is that color perception is subjective—everyone sees color somewhat differently. Even moods can influence your perception of color. In addition, light in your surroundings will affect how you see colors, particularly in a printed image. Fluorescent light has a green tint and incandescent light has a pink tint. If the ambient light has any tint, the printed material will reflect that bias. To view your printed output in the most neutral light, look at it in the light from a light box like those used by graphics professionals.

In the process through which printed materials are produced with a computer system, there are basically two kinds of color: additive (colored light transmitted from the monitor) and subtractive (light reflected from printed material). Both have the same effect on the human eye which identifies a color by the wavelengths of light that it perceives.

Monitors, by exciting phosphors on their screens, produce red, green, and blue (RGB) light that, in various combinations, can represent millions of colors. If all three colors are combined in the right mix, you will see white light. In the absence of any color, the eye perceives black.

The inks in printed material produce color by absorbing (subtracting) portions of the spectrum from the light that strikes them. This subtractive process uses cyan, magenta, and yellow (CMY) primary color pigments in combination to produce the colors you specify. You would think an equal combination of these inks should print black, but impurities in all inks cause the result to look more like a muddy brown. Printers typically add some black ink to produce a true black. (This, then is known as CMYK color.)

What all of this means is that color perception is not only personally subjective, but also subject to a number of outside influences, and that color matching during the reproduction process is problematic. Colorific is a simple solution that delivers better color consistency.

Technical Support

Colorific

350 Townsend Street, Suite 409

San Francisco, CA 94107-1699

Fax-on-demand and voice support: (415) 957-9941

Voice only: (415) 957-0152

Fax: (415) 957-9942

E-mail: colorific@aol.com

Web site: www.colorific.com

Updated information can be obtained from Colorific's 24-hour fax-on-demand system. Call (415) 957-9941 from a fax machine phone to request a catalog of documents. Tech notes are also available at the Colorific Web site.

When calling for technical support, please have the following information available: brand and model of the monitor and printer, the version of Colorific you have installed, and a precise description of the problem.

Corporate Users

Site licenses, other accommodations, and additional products are available from Sonnetech, Ltd.



Sonnetech, Ltd.
350 Townsend Street
Suite 409
San Francisco, CA 94107
415.957.9941
415.957.9942 Fax

The registered marks and trademarks mentioned in this document are the property of their owners. Information in this document is subject to change without notice and does not represent a commitment on the part of Sonnetech, Ltd.

This manual ©1997 Sonnetech, Ltd. All rights reserved.

Windows® Colorific Software ©1993-1997 Sonnetech, Ltd. and ©1992-1997 HGC Associates and their licensors. All rights reserved.

Macintosh® Colorific Software ©1993-1997 Sonnetech, Ltd. and its licensors. All rights reserved.

Color Management Software ©1993-94 EASTMAN KODAK COMPANY. All rights reserved.

Colorific® is a registered trademark and True Internet Color™ is a trademark of Sonnetech, Ltd. All rights reserved.

ColorSync® 2.0 included. ColorSync 2.0 is a trademark of Apple Computer, Inc. used under license.