

Visual CSNodes

The unique WInCIM™ add-on to see from where is who in Compuserve

README.WRI coming with this software...

The author tries all efforts to reflect the latest information available in this documentation. However, some late-minute changes or additions may not be included in this document. Please read file README.WRI with Windows Write, Notepad Editor or Word for Windows. On initial installation of the program you will also be displayed the text of this file in a window.

New in V4.0, now Visual CSNodes:

Since V3.0b, the latest software released previously, CSNodes has made major progress in the fields of ...

FULL VISITORS LIST and MAP VIEW on three independant charts

CSNodes now shows you from where your forum chat partners or other forum visitors come on three different charts you can select independantly. You will see node locations blinking on your screen like on radar. On mouse click CSNodes shows location name and local time (see below) or all visitors logged in to the forum from this node.

Additionally you are now able to produce a full list output of all forum visitors, including node location, Compuserve user-id, local time (see below).

CB Mode

allows full Visual CSNodes functions with CB Forum and Chat Areas Visitors List, which differ from regular list in node presentation.

LOCAL TIME output with each node and visitor

CSNodes shows you from the actual Local Time at any active node. Easy to configure and to retrieve. You will always know, when your chat partners should be asleep or better go to work.

NOTIFY-function allows multiple entries

CSNodes now lets you detect more favorite chat partners than just one. Select option NOTIFY for a full list dialog box.

Chat partners that have been detected once will not be called again during the same session of CSNodes.

You may now disable/enable NOTIFY-function from the dialog box.

NOTIFY-function is now available in unregistered version, too.

Easy update from recent versions

All old version program configurations will be converted and kept with new program.

Enhanced configuration storage

Individual system configurations will now be stored on program leave and reloaded at program start.

A word about shareware...

CSNodes is not freeware. You are authorized to operate CSNodes from your own computer under the **LICENSE AGREEMENT** for a 30 days trial period. The author requests for your understanding, that some advanced functions in CSNodes have only time-restricted and limited access, until you have **registered** CSNodes.

1. INTRODUCTION

1.1 What are nodes?

You are linked to Compuserve by your computer modem and your telephone line to a node. These nodes are the entries from the public to Compuserve's network. You can identify the rough area forum visitors have connected from by decoding his node, as everybody tries to keep distance calls as short as possible. CSNodes can identify those nodes, that belong to Compuserve's own network. Some users may be connected to Compuserve by foreign networks or through central data terminals. These links cannot be decoded sufficiently, however.

1.2 How does CSNodes work?

CSNodes is designed as an add-on to Compuserve's WinCIM program. It will show you the current node of any forum visitor in PLAIN LANGUAGE or as a BLINKING ICON on a chart. You will know from where your chat partner or any other forum visitor is connected to Compuserve.

System requirements: PC, Windows 3.1x, WinCIM 1.3 or higher (Auto-Mode and Registered Version only), Mouse, VGA Graphics Card (CSNodes is optimized to screen size 800x600, 16 colors). CSNodes may require high-performance mainboards, when operating in Advanced Mode and decoding many visitors at one time.

CSNodes can stay topmost to all active windows, therefore ideal support to WinCIM at any time.

CSNodes can show the plain language node name in either its own window header, thus only requiring minimum space on desktop - or insert this information directly into the headline of WinCIM's Forum Visitors Window.

IMPORTANT: The interaction between WinCIM and CSNodes is fully legal and works through published Windows inter-window communications methods. CSNodes does not use any undocumented functions. CSNodes does not modify any piece of foreign software at any time (except for WinCIM's INI-files, if you ask it to do so)

2. How to unzip CSNodes?

Please unzip (e.g. with WinZIP) the file CSNODES.ZIP (you have downloaded or received by e-mail) to the Compuserve home directory (usually C:\CSERVE\) on your computer. **It is important, that you choose this directory, because CSNodes may require a standard Compuserve/WinCIM installation for advanced and registered functions.** If you do not want to run a registered version or use Advanced Auto Mode (see below) you may use any other directory you wish, however.

After unzipping you will find some additional **files** in the directory C:\CSERVE\.

Continue installing file CSNODES.EXE, which is the executable file, as an Icon in your Windows Program Manager, if you wish to do so. Please see below for an example, what data to enter. Be sure to fill in correctly all file and directory information:

Executable file: C:\CSE\CSNODES.EXE

Working directory: C:\CSE

3. How to setup CSNodes ?

Start CSNodes by Icon click to your new Program Manager Icon, Windows Program Manager menu, Windows File Manager or any other means you wish.

CSNodes will guide you through some self-explanatory installation screens, which will be dependant on whether you want

- a first time installation of any version of CSNodes
- an update from a previous version of CSNodes
- an installation together with WinCIM 2.0

When setup has finished a screen will remind you, that you should register the program as soon as you decide to use it in excess of the initial period.

4. How to run CSNodes in routine ?

It is recommended that you start CSNodes just before starting WinCIM or by placing it into the Autostart group for automatic start.

You can only start CSNodes once at a time. Otherwise you will receive an error message and the program will return to OS.

After successful program start you will see CSNodes loading the maps and node file data and ultimately showing a bar similar to:



The number of nodes actually loaded into memory at program start differs with the latest node file you may have received or downloaded by your self.

CSNodes will place the bar to a position, where you had moved it to at your last program stop. By this function you can keep it in a certain place on WinCIMs desktop, so it will not hide any important screen information.

If a **node file not found** error is detected, check your directory for file CPSE\NOD.

If a **map file not found** error is detected, check your directory for file CSNODES.MAP.

For any other errors check for the explanation given on your screen. In case your are not sure, what the cause of the error could be, please write down the full information displayed, further information about your software and hardware environment and send it to the author by e-mail for support.

CSNodes will always load the same system configuration, that it had stored on shutdown of previous program run.

If you run CSNodes for the first time, the following initial options are set:

AUTO MODE

TOPMOST TO ALL WINDOWS

UPDATE RATE FOR MAPS=30 SEC

NOTIFY FUNCTION DISABLED

LOCAL TIME ZONE: CENTRAL EUROPE=GMT+1

LOCAL TIME WITH NODE

UNREGISTERED (SHAREWARE)

IMPORTANT NOTE: As CSNodes constantly scans (500 ms intervals) the window configuration on your desktop until it detects a visitors list window, there may be some slowdown for high-speed operations, especially heavy volume data-link, large file download activities etc. On slow systems even connection build-up to CIS can be affected. If you feel it is necessary, shutdown CSNodes during these times.

5. How to operate CSNodes three different modes?

You will select the mode, you want to operate CSNodes from the system menu at the left of the programs bar. From the option **DISPLAY...** you can choose **AUTO MODE** checked or unchecked, latter indicating that **MANUAL MODE** is active.

5.1. Manual Mode



As long as you have highlighted CSNodes on your Windows desktop, in this mode you may enter three letters from the keyboard that represent your chat partners node, e.g. **HNM**.

In case the visitors windows shows a six-letter-code, e.g. **T65BHJ** you should enter the last three-letters only, i.e. **BHJ**.

CSNodes will show the letters in its headline as you enter them. Once all three letters are entered, CSNodes will display the assigned node entry or "**Node not found**", if it is an unknown three-letter-code.

In case you have activated the option **LOCAL TIME WITH NODE**, you will be shown the location followed by the local time at the node location:



Should you have deactivated that option, the node code will be added to the location instead of the local time:




Manual mode functions are NOT available in Auto Mode. In Manual Mode CSNodes is not linked to WinCIM at all, so you can even use it off-line.

5.2. Auto Mode



In Auto Mode CSNodes will require cooperation of WinCIM. After you have started WinCIM and selected a forum of your choice or the CB chat area, you should select the visitors list by means

of the button  from the right-hand menu bar.

Once the visitors list window is shown, **you must synchronize WinCIM and CSNodes by highlighting (through means of a mouse click) one visitor from the list.** At the same time, latest 500 ms later, CSNodes will show the decoded location of the node in its header, depending on the format you have selected from the **DISPLAY... | LOCAL TIME WITH NODE** menu option (see MANUAL MODE above).

In case you use Auto Mode in the CB Chat Area, CSNodes will display a <*> behind the location name to indicate to you, that it has not decoded this information, but taken it from WinCIM directly.

IMPORTANT NOTE: Within the CB Chat Area, some plain languages location names displayed by WinCIM are different from the names used in the nodes file, (e.g. KOELN instead of COLOGNE). In this case, CSNodes cannot display the local time or the map location of such a node correctly.

CSNodes will transfer the original header text of the WinCIM window to its own headline, where it is stored until either CSNodes is shut-down or the WinCIM window is closed.

Any further click to a name in the list will show you the location again.

You may have to repeat the synchronization click to a name in the list box, whenever you had closed the window and called it up again.

5.3. Advanced Auto Mode

As a new feature to CSNodes, you may display full visitors decoding information in a separate list or on a chart of your selection. You may call these functions from the block **VISITORS LIST ...** on the menu. Please refer to **separate information** on this topic.

6. What are further menu options?

You will have the following menu options from CSNodes menu bar available:

MOVE and

CLOSE Standard Windows actions

ICON will iconize the program bar on your desktop

VISUAL CSNodes... all following options belong to **Advanced Auto Mode**

...

CONFIGURATION... a sub menu with the following options

NOTIFY will open a menu to define visitor names

MAP SCAN RATE will open a menu to define the scanning rate in Advanced Auto Mode

LOCAL TIME ZONE will open a dialog to setup your local time zone

ABOUT will display some information about this program

NODE FILE will display some information about the node file and WinCIM settings

DISPLAY... a sub menu with the following options

ALWAYS ON TOP when option checked, CSNodes will stay topmost to all other windows on your desktop

AUTO MODE when option checked, AUTO MODE is active

LOCAL TIME WITH NODE

when option checked, local time is shown with node location

HELP

calls this help file

REGISTER

calls registration menu, only available as long as you have not registered

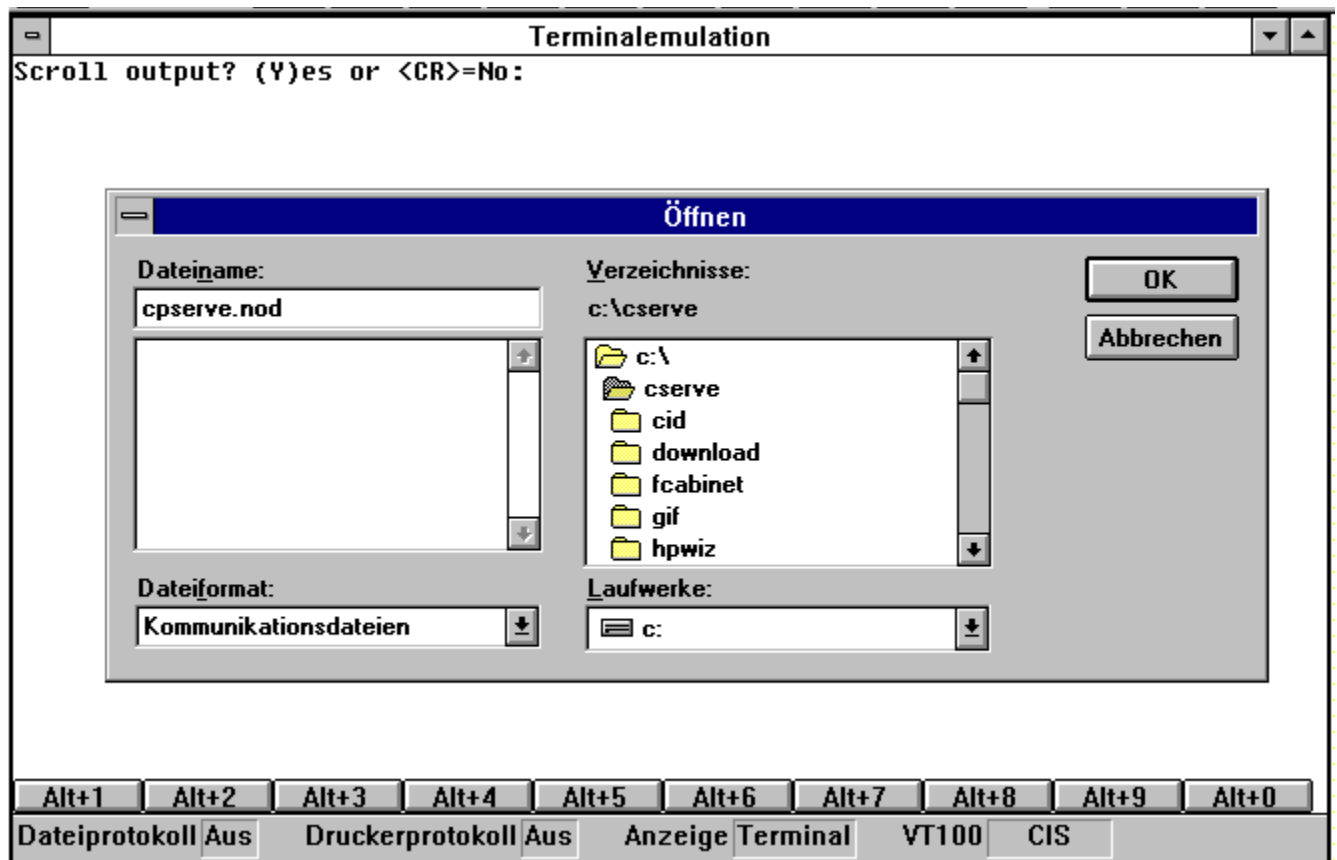
7. How to get an updated node file?

To update the node file, you should download the actual node list from Compuserve and store it under your CSNodes directory. It is strongly recommended, that you create a backup copy of your old node file under a different name, to be able to restore it.

Now select the PHONES menu by Compuserve command GO LGN-1.



From this menu select option COMPUSERVE NODES AND LOCATIONS. A terminal emulation screen will be displayed to you. Open a file menu by double-clicking onto the field OFF following the phrase FILE PROTOCOL at the lower left of the dialog. You will then be prompted to a file open dialog (though it should be a SAVE AS dialog), as below:



Enter the file name CPSSERVE.NOD and be sure to select the CSNodes directory to store it. Close the dialog with button OK and then answer the SCROLL OUTPUT question with Y. The node file will be downloaded and saved. Should you encounter problems with this procedure, please contact the [author](#).

8. What else?

CSNodes has been tested with WinCIM 1.3.1 and 2.0. It has been developed under Windows 3.1 and Turbo Pascal. If you encounter any problems with other OS or WinCIM versions please advise the [author](#) by e-mail.

9. Shareware operation and registration

You will see shareware operation is active from the box at the program start, the "ABOUT" box or the "REGISTER" menu item being available at the main menu.

CSNodes Shareware Advance Auto Mode functions are automatically suspended after 5 minutes.

Please register solely by usage of Compuserve GO SWREG forum. Please refer to [separate information](#) on this topic and on current [rate](#). Also check README.WRI for the latest information, please.

10. How to get further assistance and information, how to provide feedback?

Please feel free to contact the author at any time by e-mail or fax message, if having any problems with CSNodes, please together with a detailed description. The author is also interested in any positive or negative feedback.

© 1996 GK

260496

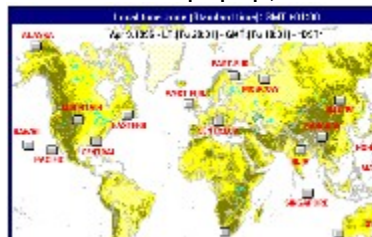
Local Time Zone

CSNodes can show Local Time with each node location it displays in program header or lists of Advanced Auto Mode. To calculate this information you must setup the Local Time Zone you are operating your computer in. CSNodes will calculate from your computers time and this information the Universal Time Coordinated or Greenwich Mean Time (GMT) as internal time base. Node locations that have been decoded will receive its Local Time offset to GMT from an information contained within the map file CSNODES.MAP.

To setup Local Time you will be prompted during the installation process to answer a dialog. You may repeat this setup any time from Main Menu option **CONFIGURATION | LOCAL TIME ZONE**.

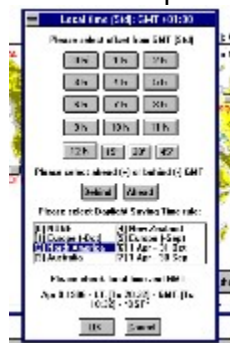
Please note, that all setups you make during the following dialogs shall reflect **standard time only. Daylight saving time rules are defined separately.**

A window will popup, that shows the most frequent used time zones on a world map.



Should you find your local time zone on this map, just press the button and leave the dialog with button OK. All settings should be correct then and will be stored.

If you require setup for a more seldom used time zone, please press then button OTHER. You will then be prompted to a new dialog, from where you may setup all data in detail.



You can check your settings in test field at the bottom of the dialog box. Please leave the correct setting with OK.

Should there be no valid Daylight Saving Time rule for your time zone, either select the nearest appropriate rule or switch Local Time Zone one hour ahead or back at day of time change.

DST rules for the zones known are stored until 2001.

Nodes

A node within Compuserve describes a number of multiplexed telephone lines from outside that are linked to the Compuserve network.

Compuserve nodes are displayed in WinCIM in three different ways:

- **Three-letter-code, e.g. DFG, within most forums**
- **Six-letter-code, e.g. T56ART, within some forums**
- **Plain language, e.g. LONDON, within CB areas**

CSNodes can decode

- **all three types of codes, when in Auto Mode or Advanced Auto Mode**
- **the three-letter-code in Manual mode**

It is the authors experience from using CSNodes, that Compuserve will not show the correct node code, i.e. being associated with the terminal the user dials to, under the following circumstances:

- The user is connected to Compuserve by a WINSOCK-type connection under WinCIM 2.0
- The user is connected to Compuserve by a third-party network
- The user is rerouted within Compuserve's network.

When receiving the following node locations you should be aware, that the user is with high probability calling from a different location:

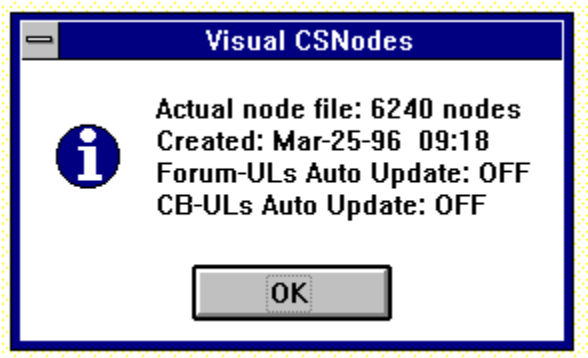
- HILLARD ...
- COMPUSERVE ...
- ARLINGTON ...
- any ... CENTER

Any of these locations, with the exception of COMPUSERVE UK (=London, England), will therefore not be displayed on maps in Advanced Auto Mode.

In some cases it has been detected that the location DUBLIN,OH seems to be the target of a rerouting scheme, too.

Besides this problem, there may be also some node codes, that cannot be identified (Node not ofond.). These locations are, as far as it looks like from the authors experience with operation of CSNodes, also links to INTERNET or to a WINSOCK-Connection.

You will get information about the node file, when executing menu option **CONFIGURATION | NODE FILE** with the following format:



The date and time information refers to the data contained within the Compuserve nodes information downloaded.

Other information in this menu refers to the original settings within WinCIM 2.0 (WINCIM.INI), that may be altered by CSNodes, if required. Please refer to [Installation](#) section.

Files

After unzipping file CSNODES.ZIP to your **Compuserve Home Directory** (e.g. C:\CSERVE), you should find there the following files being added:

CSNODES.EXE	the executable file
CSNODES.HLP	this Help file
CPSERVE.NOD	the node file
CSNODES.MAP	the map location file
CSNODES.NFY	an empty file to take up visitors to be notified
README.WRI	latest information
LICENSE.WRI	the license agreement between yourself and the <u>author</u>

On installation CSNodes will place the file

CSNODES.INI configuration file

to the **Windows Root Directory** (e.g. C:\WINDOWS\)

You may destroy **README.WRI** and **LICENSE.WRI** after program setup.

You should never alter or destroy **CSNODES.INI** unless you want to de-install the entire program.

You may download a new node file and overwrite **CPSERVE.NOD** from Compuserve, but be sure there is always one available for CSNodes when it is commenced. It is recommended that you store the previous version of this file as a backup.

File storage information:

CSNodes can store list images from visitors lists of Advanced Auto Mode. These files carry the following format:

text <chr09> text <chr09> ...

Deinstallation

If you want to destroy CSNodes from your computer, please erase all the files mentioned in this paragraph.

License agreement

THIS DOCUMENT SERVES AS A LICENSE AGREEMENT BETWEEN YOU ("THE PURCHASER") AND THE AUTHOR ("THE AUTHOR") OF VISUAL CSNODES ("THE SOFTWARE"). PLEASE CAREFULLY READ ALL THE TERMS AND CONDITIONS OF THIS AGREEMENT PRIOR TO INSTALLING THE SOFTWARE. INSTALLING THE SOFTWARE INDICATES YOUR ACCEPTANCE OF THESE TERMS AND CONDITIONS. IF YOU DO NOT AGREE TO THESE TERMS AND CONDITIONS PLEASE ERASE THE SOFTWARE FROM YOUR COMPUTER.

1. SHAREWARE LICENSE: This License Agreement grants THE PURCHASER to use one copy of the THE SOFTWARE on any single computer at a time for 30 (thirty) days from installation. After this period has ended THE PURCHASER is not allowed to use THE SOFTWARE any longer unless he has applied for registration at THE AUTHOR.
2. UNRESTRICTED LICENSE: Upon receipt of a registration number THE PURCHASER is allowed to indefinitely use THE SOFTWARE on any single computer at a time. THE PURCHASER is not allowed to make public or distribute with THE SOFTWARE the registration number he has received under this license.
3. EXTENDED SHAREWARE LICENSE: THE PURCHASER may on his discretion distribute THE SOFTWARE, but not the registration number, to another party as long as this party agrees to the conditions set forth above and will not make commercial use of THE SOFTWARE. THE PURCHASER must inform THE AUTHOR about such transfer by e-mail or fax within 48 hours, stating full address of recipient of THE SOFTWARE transferred.
4. UPLOADS: THE PURCHASER may on his discretion upload this software to a online forum within Compuserve as long as he has received written approval from THE AUTHOR and the upload objective is non-commercial. THE PURCHASER must inform THE AUTHOR about such upload by e-mail or fax within 48 hours, stating upload information of THE SOFTWARE.
5. COMMERCIAL USE: No copy of THE SOFTWARE may be used for any commercial reasons without prior written approval from THE AUTHOR.
6. DISCLAIMER AND LIMITATION OF LIABILITY: THE AUTHOR has made reasonable checks of THE SOFTWARE to confirm that it will perform in normal use on compatible equipment substantially as described in HELP DOCUMENTATION of THE SOFTWARE or as published most recently prior to the delivery to THE PURCHASER. However, due to the inherently complex nature of computer software and the requirements to operate in part or full in dependance of foreign software, THE AUTHOR does not warrant that THE SOFTWARE or its documentation is completely error free, will operate without interruption, is compatible with all

equipment and software configurations, or will otherwise meet your needs. ACCORDINGLY, THE SOFTWARE AND DOCUMENTATION ARE PROVIDED AS-IS, AND THE PURCHASER ASSUMES ALL RISKS ASSOCIATED WITH THEIR USE. THE AUTHOR MAKES NO OTHER WARRANTIES EXPRESSED OR IMPLIED, WITH RESPECT TO THE SOFTWARE OR THE DOCUMENTATION, THEIR MERCHANTABILITY, OR THEIR FITNESS FOR ANY PARTICULAR PURPOSE. IN NO EVENT WILL THE AUTHOR BE LIABLE FOR INDIRECT, INCIDENTAL OR CONSEQUENTIAL DAMAGES, INCLUDING, WITHOUT LIMITATIONS, LOSS OF INCOME, USE, OR INFORMATION, NOR SHALL THE LIABILITY OF THE AUTHOR EXCEED THE AMOUNT PAID FOR THE SOFTWARE.

7. GENERAL: This Agreement constitutes the entire Agreement between THE PURCHASER and THE AUTHOR and supersedes any prior written or oral agreement concerning the contents of THE SOFTWARE.

Registration

Registration to CSNodes will cancel any limits in usage of Advanced Auto Mode. Additionally you will be supported by free updates of map and node files through e-mail. Please refer for rates under special topic.

Please confirm prior to registration, that you operate CSNodes from the COMPUSERVE HOME DIRECTORY in a standard WinCIM environment. Otherwise registration will not be completed.

To operate CSNodes without any restriction you must register the program through Compuserve Shareware Forum by the command GO SWREG. Select option SHAREWARE REGISTRATION. When prompted search criteria, use software title id (account number)

9771

and start search. Select option DISPLAY SEARCH RESULTS.

As soon as the author receives your registration, you will be provided a **registration number/password that is VALID ONLY for the Compuserve User Id you have indicated upon registration in the forum**. Should you use a different User Id for operation you must indicate this in your registration.

In case you use multiple User Ids you will be able to use CSNodes only with one of them. You cannot use multiple copies or a registration for multiple user ids on your computer. If this does not fulfill you requirements, please contact the author.

The **registration number/password** is your key to CSNodes. Please keep this number safe. Then proceed as follows:

- 1) Start CSNodes
- 2) Select menu option **REGISTER**

See a registration dialog on your screen.

- 3) Please fill in carefully the COMPUSERVE USER ID you have requested a registration for into the upper edit field.
- 4) Please fill in carefully the REGISTRATION NUMBER or PASSWORD you have received into the lower edit field. The password should contain nine letters or digits.
- 5) Press OK.

CSNodes will now check your configuration, proof your password and leave the dialog, if registration is valid.

In case registration is not valid you will be displayed an error box containing some system data. If procedure has been repeated and no valid registration is possible, you should write down the information in the error box and submit this to the author for support.

Should you have stored a password of a previous version of CSNodes, you will alerted, that this is the case. The password will however not been changed and you may continue use of this old version.

Advanced Auto Mode

In Advanced Auto Mode you will have the new experience of a visual representation from where Compuserve visitors are calling.

To start Advanced Auto Mode you must run a registered version of CSNodes or have not operated the program longer than 5 minutes since start as shareware.

From the Main Menu you can select the following options:

Visual CSNodes...	Places all windows of Advanced Auto Mode on the desktop
...Visitors list	Display a full list output of forum visitors
... North America	Displays a map of North America with active nodes blinking on it
... Europe	does the same for Europe
... World	does the same for the whole World
... Iconize all the desktop	Opens all maps and the visitors list and places them as icons on the desktop
... Close all Mode	Closes all maps and the visitors list and leaves Advanced Auto Mode

Important Notice:

Advanced Auto Mode interacts with WinCIM through pointing and input simulation. Actually, operation of other programs will STOP, while CSNodes is collecting user names. In forums, where many hundreds of visitors must be identified (e.g. CB Chat Areas) Advanced Auto Mode may therefore slow down your computers operation considerably. Please adjust the MAP SCAN RATE according to your requirements. It is strongly recommended, that you do switch off Advanced Auto Mode, if you will download or upload files.

1. General

When starting Advanced Auto Mode you will see nearly immediately, that the highlighting bar in WinCIMs visitors window is running from top to bottom and coming to rest again. By this method, CSNodes is collecting all visitors information from WinCIM, i.e. this is normal.

To avoid collision with WinCIM updating the visitors window, CSNodes will lock out WinCIMs access to the list automatically, when you use WinCIM 1.3 or 1.4. In this case you should NOT push the button STOP / CONTINUE in WinCIM.

When you operate WinCIM 2.0, the auto update function of the visitors window is inhibited by CSNodes. You should NOT reset this setting manually, unless you do not want to use Advanced Auto Mode during the same session. CSNodes will automatically request WinCIM to update the visitors information after its own data update.

When closing a visitors window while Advanced Auto Mode is active, CSNodes will store visitors list and map window configuration and hide these windows to clear the desktop. On next synchronization to WinCIM, i.e. when a visitors window is detected again, the window configuration will be restored.

2. Visitors list

The visitors list displays to you all information available about forum visitors. You may select its order by name or user-id, as checked out from WinCIM.

From the lists dialog, the following button options are available:

ICON	iconizes the list, but keeps it operating in the background
REDRAW	starts an update of the list and maps manually
SAVE	opens a SAVE AS dialog, where you may save the lists contents to disk
STOP 	
SCAN	toggles a switch, which activates or deactivates automatic updates of the list
CLOSE	closes the window.

It is recommended that you use the STOP option, when you want to avoid automatic updates in intensively visited forums.

When storing a list image with the SAVE option, spaces between the columns will be filled in the saved file by a character representing the TABULATOR. This enables you, to load this file into a calculation program, like Microsoft Excel™, and sort etc. the data.

3. Map display

When selecting a map from the menu, all nodes CSNodes may have identified within the relevant area as being active, are displayed by a blinking icon.

From the maps buttons, the following options are available:

ICON	iconizes the map, but keeps it operating in the background
CLOSE	closes the map

Maps are supported by **mouse** use as follows:

LEFT BUTTON when hitting a blinking node, the location name together with local time will be shown in the headline. In case CLUSTERS (see below) are used, the state name will be shown for orientation. In this case the local time may not be valid for all locations of the cluster.

RIGHT BUTTON when hitting a blinking node, a visitors list will be opened, that displays the visitors being connected from the node selected. On maps NORTH AMERICA and EUROPE nodes at the same place, but with a different location name, will be shown within one window.

On map WORLD, in order to avoid node congestion, the following node clusters have been created:

England, Germany, Switzerland, France

Contiguous U.S. States, Canada: B.C., ON.

When selecting such a cluster with the right mouse button, you will be displayed ALL visitors from this cluster within the same window.

Map Scan Rate

In Advanced Auto Mode CSNodes scans the visitors window of WinCIM with a fixed interval rate. You may select this rate to your individual requirements from the dialog **CONFIGURATION | MAP SCAN RATE**. The scan rate selected is stored in the program configuration at program end.

Selection of the scan rate should be such, that update of visitors list and maps is as often as you may require, but seldom enough not to prevent your computer from important actions. Due to its decoding activities and sorting of lists, CSNodes may require some time in heavily visited forums to end update.

Notify Function

CSNodes offers you an alert function to detect certain visitors of a forum.

Please setup the names you want to have scanned from the dialog **CONFIGURATION | NOTIFY**. You will be prompted to the following dialog:



Please insert a new name into the field USER NAME and press the ADD button to add it to the list in the lower field.

All names that are highlighted in the lower field will be scanned for alert. You may toggle highlighting by a mouse click onto the names line.

Additionally you may switch off or on the Notify function at all by pressing the button **ENABLE | DISABLE**. You will notice the actual status of the function from the header of this dialog or the Main Menu item NOTIFY being checked or unchecked.

Further button options available are

OK Saves latest changes

CANCEL Ignores latest changes

DELETE Deletes the name being marked (not highlighted) in the lower field

File information:

User names are stored in file CSNODES.NFY. A * preceeding each name marks it as activated.

IMPORTANT NOTE FOR USERS UPDATING FROM PREVIOUS VERSIONS OF CSNodes ONLY:

On first function call after program installation you will be prompted for the one-time opportunity to transfer a USER NAME stored with CSNodes V3.0 to the new software. **The prompt will not be repeated at future program runs.**

Installation (Setup)

Program installation will be dependant on whether

- you have a previous installation of CSNodes on your computer
- you will operate CSNodes together with WinCIM 2.0

At installation time you will be prompted at first to

- accept the License Agreement
- acknowledge you have read contents of file README.WRI

CSNodes will then try to identify a standard WinCIM configuration on your computer. If it was successful, it will display to you the directory it assumes as Compuserve home directory. Please acknowledge this directory or move CSNodes to another directory. If CSNodes does not identify the Compuserve directory it will use the actual directory for installation.

Further on you will be prompted to install the Local Time zone to CSNodes. The dialog is the same as the one you may select from the main menu.

Users operating WinCIM 2.0 will be prompted to alter WinCIM configuration data. This is required, if the Auto Update Visitors List option in WinCIM for either the CB or Standard Forums are set to ON. On your request CSNodes will store the old configuration, set them to ON and activate Advanced Auto Mode. You may restore the previous configuration by a prompt at program end. Be aware, that you cannot operate Advanced Auto Mode, if you select either of WinCIMs options in ON status.

A program ABOUT box will end CSNodes setup.

Author

easybytes Software

G. Kruse

Oststeinbek

Hamburg, Germany

Compuserve 100716,1001

e-mail: 100716.1001@compuserve.com

Fax: (+49) - 40 - 713 10 40

References

The following trademarks may be registered by their potential owners:

WinCIM

Windows

Turbo Pascal

Compuserve

Microsoft

Borland

Error messages

The following error messages may occur during CSNodes operation:

C19: No file CPSEVERE.NOD found

The node file cannot be found in the Compuserve or current directory. The program is aborted. Search for this file and request a new one from the author, if not found. Always start CSNodes from its working directory, i.e. logon to this directory before you start. From Windows Program Manager insert the correct directory information during setup.

F10: File access error to CSNODES.MAP.

The map file cannot be found in the Compuserve or current directory. The program is aborted. The same possible error causes apply as under C19.

L88: Error on loading COMMDLG.DLL

The library COMMDLG cannot be found in the current directory or under the Windows systems directory. The save dialog of the visitors list window cannot be loaded. This library belongs to Windows OS and is not delivered with CSNodes.

M01: Menu creation error

M02: Menu creation error

M09: Menu creation error

A menu cannot be created at runtime within Windows. The program is aborted. This is a severe error under Windows OS. You should close programs and restart Windows before trying another program run. If error remains, your system configuration is probably corrupt.

Errors during registration or run of registered software:

R01: Password not found in CSNODES.INI

The registration setup was uncomplete.

R02: WinCIM file error

Access denied to WinCIM executive file configuration

R03: WinCIM.INI file error

Access denied to WINCIM.INI

R04: CIS configuration error.

Compuserve file configuration is non-standard

R05: User-Id mismatch:

User-id is not valid CIS id.

R06: Password mismatch:

Password does not match with user-id.

R31: Session error

A general session error has occurred.

R50: Registration error

The registration was not successful and is aborted. The program will continue to operate as Shareware. A number of sub-messages follows, that describe what elements were faulty. In case you have a repeated message of this kind, though all registration data have been carefully checked and entered, you should write down these data and request support from the author.

S12 error: System data dump

A system data dump follows for check purposes

T01: Timer Creation Error

T02: Timer Creation Error

W01: Main Window Creation Error

W02: Map Window Creation Error

Fatal creation errors within Windows due to missing memory or missing handles. You should close some other programs and/or restart Windows before trying another program run of CSNodes. However, these messages show, that probably a severe error exists within your system configuration.

You may get further support on individual errors from the author.

Rates

Rates (apply when making registration through Compuserve SWREG)

Customers resident within Germany:

CSNODES program	USD	12.00
MWST 15%	USD	1.80
Compuserve Handling Fee 15%	USD	2.07
Total	USD	15.87

Customers resident within other countries:

CSNODES program	USD	13.80
Compuserve Handling Fee 15%	USD	2.07
Total	USD	15.87

