



ActiveSky Media Player for Palm-size PC User Guide

Contents

1	Welcome	2
1.1	Introducing ActiveSky Media Player for Palm-size PC	2
1.2	Features	2
1.3	ActiveSky Media Player Mobile Device Requirements	2
2	Getting Started	3
2.1	Downloading ActiveSky Media Player.....	3
2.2	Installing ActiveSky Media Player	3
2.3	Transferring SKY files to the Palm-size PC	3
3	Using ActiveSky Media Player.....	4
3.1	Starting ActiveSky Media Player.....	4
3.2	Getting Familiar	4
3.2.1	Accessing the Menu	4
3.2.2	Toolbar.....	5
3.2.3	Status Bar.....	6
3.2.4	Playing SKY Files	6
3.3	File Properties.....	6
3.4	Customizing ActiveSky Media Player (Options)	6
3.5	About ActiveSky Media Player	7
3.6	Help	7
3.7	To Exit ActiveSky Media Player.....	7
3.8	Deleting a SKY file.....	8
3.9	Uninstalling ActiveSky Media Player.....	8
4	ActiveSky Desktop Viewer.....	8
	Contact and Technical Support	9
	Copyright Notices	9



1 Welcome

1.1 Introducing ActiveSky Media Player for Palm-size PC

ActiveSky Media Player for Palm-size PC plays the proprietary video format (.sky) developed by ActiveSky. The ActiveSky Media Player allows you to open, play, pause, and stop SKY files.

This document explains how to download a copy of ActiveSky Media Player from the ActiveSky website. It also explains how to obtain, install and play great video content on the ActiveSky Media Player. Included with some versions of the ActiveSky Media Player download is ActiveSky Desktop Viewer. ActiveSky Desktop Viewer is a Windows application that allows SKY files to be previewed before transferring them to the Palm-size PC.

1.2 Features

ActiveSky Media Player can:

- Play, Pause/Next Frame, Stop, Zoom during playback mode.
- Display elapsed time, total time, progress bar and audio state during playback mode.
- Customize player options to set the Playback speed, Autoplay, Continuous play, Audio Mute, 2x Zoom and Show status bar.
- Display File Properties about the open SKY file.

1.3 ActiveSky Media Player Mobile Device Requirements

The device requirements to run ActiveSky Media Player are:

- Requires Windows Powered Palm-sized PC running Windows CE 2.11. Compatible with MIPS and SH3 processors.
- At least 1MB of available memory for the program plus additional memory for SKY files on the device or Storage Card.
- Recommended 4096 color display or better.

Check our web site at www.activesky.com for a complete list of specific supported Palm-sized PCs.

Minimum desktop PC requirements for ActiveSky Desktop Viewer:

- Pentium PC with 32MB RAM running Windows 95, 98, NT 4.0 or 2000 (65536 color display or better).



2 Getting Started

2.1 Downloading ActiveSky Media Player

To download ActiveSky Media Player from our web site, go to the Windows CE Download area at www.activesky.com and follow the instructions displayed.

2.2 Installing ActiveSky Media Player

Once ActiveSky Media Player is downloaded onto the desktop PC it needs to be installed onto the Palm-size PC.

1. Connect the Palm-size PC to the desktop PC.
2. ActiveSync connects the Palm-size PC with the desktop PC automatically. (Microsoft ActiveSync is supplied with your Palm-size PC.)
3. Once the connection has been made, the Palm-size PC is ready to install ActiveSky Media Player.
4. Run the ActiveSky installation program that was downloaded onto the desktop PC.
5. Follow the instructions to install ActiveSky Media Player onto the Palm-size PC.

2.3 ActiveSky Media Player Registration

ActiveSky Media Player for Pocket PC is limited to a 30 day trial period, after which you must register the program. When the ActiveSky Media Player is first run you will be prompted to enter a Registration Code. Please note the DeviceID displayed on the Registration screen and visit our web site at www.activesky.com to obtain your Registration Code. The Registration screen on your Pocket PC can also be accessed by selecting **Register...** from the File menu.

2.4 Transferring SKY files to the Palm-size PC

Now that ActiveSky Media Player has been installed on the Palm-size PC, SKY files can be transferred to play. SKY files can be found at www.activesky.com or at one of many content provider web sites. Visit www.activesky.com for a list of these sites.

Once the SKY files have been downloaded onto the desktop PC, they can be transferred to the Palm-size PC. To copy SKY files from the desktop PC to the Palm-size PC:

1. Connect the Palm-size PC to the desktop PC.
2. Start ActiveSync on the desktop PC and click the **Explore** button on the Toolbar. The **Mobile Device** window will open.
3. Using **Windows Explorer** on the desktop PC, select the SKY files and copy them to the "My Documents" folder in the **Mobile Device** window.
4. To copy SKY files to the Palm-size PC:
 - a. Drag and Drop the SKY files from **Windows Explorer** to the "My Documents" folder in the **Mobile Device** window.or



- b. Right-click on the files and select **Copy**. In the **Mobile Device** window, open the "My Documents" folder, right-click and select **Paste**.

NB: SKY files **MUST** be stored in the "My Document" folder or an immediate sub-folders under the "My Documents" folder on the Palm-size PC or Storage Card. Otherwise you will not be able to open the files from within ActiveSky Media Player.

Downloaded SKY files can be previewed on the desktop PC using ActiveSky Desktop Viewer.

3 Using ActiveSky Media Player

3.1 Starting ActiveSky Media Player

To start ActiveSky Media Player:

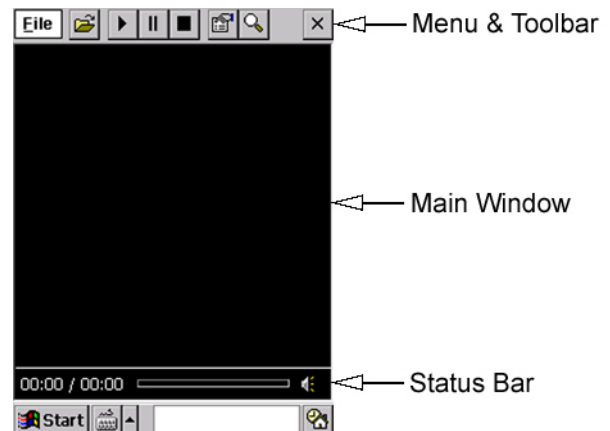
1. Switch on the Palm-size PC.
2. Tap the **Start/Programs** menu.
3. Tap the **ActiveSky** icon.

This will start ActiveSky Media Player. The Palm-size PC is now ready to start playing.

3.2 Getting Familiar

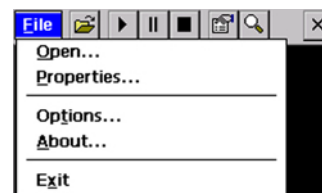
Before getting started it is a good idea to be familiar with ActiveSky Media Player.

The application consists of a combined Menu and Toolbar, Main Window where the SKY videos are displayed and a Status Bar.



3.2.1 Accessing the Menu

Tapping **File** activates the File menu.





The File menu contains the following options:

Open...	Opens a SKY file.
Properties...	Displays a list of properties about an open SKY file.
Options...	Displays a list of options that allow ActiveSky Media Player to be customized.
About...	Displays information about ActiveSky Media Player and ActiveSky.
Exit...	Closes and exits ActiveSky Media Player.

3.2.2 Toolbar

The functions of the Toolbar are:



Open

Tap this button to browse for and open a SKY file.



Play

Tap this button to Play the open SKY file.



Pause



Next Frame

Tapping the **Pause** button when the SKY file is in playback pauses at current position. Once the SKY file is paused this button changes to the **Next Frame** button. Tap this button again to advance frame by frame. This feature is useful for slide shows or viewing comic strips. Playback can be resumed at any time by tapping the **Play** button or Stopped by tapping the **Stop** button.



Stop

Tapping this button stops playback of the open SKY file and rewinds the file back to the beginning.



Options

Tap this button to access the Options menu and customize ActiveSky Media Player.



Zoom

Tapping this button doubles the display size of the SKY file. If the SKY file is larger than the device display, then the SKY file will be centered and clipped or trimmed to size. If the display size is already doubled and the zoom button is tapped, this will reset the display size to normal.



3.2.3 Status Bar

The status bar at the bottom of the screen shows how long the SKY file has been playing, the total play time for the SKY file, a progress bar and a speaker icon if the SKY file contains an audio stream.



3.2.4 Playing SKY Files

To play a SKY file:

1. Select **Open...** from the File menu, or tap the **Open** button on the toolbar.
2. Select on the SKY file to be played.
3. If Autoplay is enabled in the Options menu, the SKY file will begin to play automatically. Otherwise, tap the **Play** button.

3.3 File Properties

To view the file properties of the open SKY file:


1. Select **Properties...** from the File menu.

The Properties are divided into 3 sections: General, Details and Statistics.

The General tab contains File name, Title, Author, Date Created and Copyright information. Information will only be displayed if available.

The Details tab contains File name, File type, File size (in kBytes), Media length (in mm:ss), Picture size (Width x Height in pixels), Total frames, Frame rate (per second) and the Audio format.

The Statistics tab contains File name, Total time (milliseconds) and Average frame rate (frames per second).

2. To exit the file properties, tap the  close button in the top right corner of the screen.

3.4 Customizing ActiveSky Media Player (Options)

To customize ActiveSky Media Player:

1. Select **Options...** from the File menu or tap the **Options** button.

The following options can be modified:

Playback speed: x0.5, x1, x2, Max (Default: x1).

Sets the speed of the SKY file in playback. Audio is only played during normal (x1) playback speed.

Autoplay on open: On/Off (Default: On).

Starts playing the SKY file as soon as it is opened.



Continuous play: On/Off (Default: Off).

Replays the SKY file in a continuous loop, until the **Stop** button is tapped.

Audio mute: On/Off (Default: Off).

Silences the audio stream, if one exists, of the SKY file.

2x Zoom: On/Off (Default: Off).


Doubles the display size of the SKY file.

Direct screen access: On/Off (Default: On)

Enables direct screen access for faster screen drawing.


Show status bar: On/Off (Default: Off).

Show or Hide the status bar.

2. Tap the **OK** button to exit with new changes, or, tap the  close button in the top right corner of the screen to exit without new changes.


3.5 About ActiveSky Media Player

To view details about ActiveSky Media Player:

1. Select **About...** from the File menu.
This displays the ActiveSky Media Player version, copyright information and the ActiveSky web site address.
2. To exit the About screen, tap the  close button in the top right corner of the screen.


3.6 Help

To access the help file:

1. Ensure that ActiveSky Media Player is running.
2. Tap the **Start** button.
3. Select **Help**.
4. To exit help, tap the  close button in the top right corner of the screen.

3.7 To Exit ActiveSky Media Player

To Exit ActiveSky Media Player:

1. Select **Exit...** from the File menu, or, tap the  close button in the top right corner of the screen.



3.8 Deleting a SKY file

To delete a SKY file from the Palm-size PC:

1. Connect the Palm-size PC to the desktop PC.
2. Start ActiveSync on the desktop PC and click the **Explore** button on the Toolbar. The **Mobile Device** window will open.
3. Locate and select the SKY files, right-click and select **Delete**.

3.9 Uninstalling ActiveSky Media Player

To uninstall ActiveSky Media Player from the Palm-size PC:

1. Select **Settings** from the Start menu.
2. Select the **System** tab.
3. Tap the **Remove Programs** icon.
4. Select **ActiveSky Media Player**, then tap **Remove**.

4 ActiveSky Desktop Viewer

ActiveSky Desktop Viewer is a Windows application that allows SKY files to be previewed before transferring them to the Palm-size PC. ActiveSky Desktop Viewer is included with some versions of the ActiveSky Media Player download and is installed, if selected, on the desktop PC during the ActiveSky Media Player installation process.

To start ActiveSky Desktop Viewer:

1. From the **Start/Programs/ActiveSky Media Player** menu, select **ActiveSky Desktop Viewer**.

ActiveSky Desktop Viewer is essentially identical to ActiveSky Media Player on the Palm-size PC except for the following differences:

- **Direct Screen Access** is disabled in the Options menu. This option is not supported by the PC.
- When the zoom function is used, ActiveSky Desktop Viewer will automatically resize to display the zoomed SKY file.



Contact and Technical Support

For ActiveSky technical support, please contact us by e-mail at wince_support@activesky.com.

For more information about ActiveSky, see our web site at www.activesky.com.

Thank you for using ActiveSky technology!

Copyright Notices

Copyright ©2000 ActiveSky Inc. All Rights Reserved.

Microsoft and Windows are registered trademarks of the Microsoft Corporation.

All other products are trademarks of their respective owners.

27-Jul-00