



ActiveSky Media Player for Palm OS User Guide

Contents

1	Welcome	2
1.1	Introducing ActiveSky Media Player for Palm OS	2
1.2	Features	2
1.3	ActiveSky Media Player Mobile Device Requirements	2
2	Getting Started	3
2.1	Downloading ActiveSky Media Player.....	3
2.2	Installing ActiveSky Media Player	3
2.3	ActiveSky Media Player Registration	4
2.4	Installing SKY files	4
3	Using ActiveSky Media Player.....	5
3.1	Opening ActiveSky Media Player	5
3.2	Getting Familiar	5
3.2.1	The Play List Screen	6
3.2.2	Accessing the Menu	6
3.2.3	Video Controller.....	6
3.2.4	Playing SKY Files	7
3.3	Viewing the SKY file Properties (File Info)	7
3.4	Customizing ActiveSky Media Player (Video Options)	8
3.5	Help	9
3.6	Beam Player	9
3.7	About ActiveSky.....	9
3.8	Register ActiveSky.....	9
3.9	Deleting a SKY file.....	9
3.10	Uninstalling ActiveSky Media Player	9
4	Using ActiveSky Desktop Viewer (Windows only)	10
4.1	Opening ActiveSky Desktop Viewer.....	10
4.2	Getting Familiar	10
4.2.1	Accessing the Menu	10
4.2.2	Toolbar.....	11
4.2.3	Status Bar.....	11
4.2.4	Playing SKY Files	11
4.3	File Properties.....	12
4.4	Customizing ActiveSky Desktop Viewer (Options).....	12
4.5	About ActiveSky Desktop Viewer.....	13
4.6	To Exit ActiveSky Desktop Viewer	13
	Contact and Technical Support	13
	Copyright Notices	13



1 Welcome

1.1 Introducing ActiveSky Media Player for Palm OS

ActiveSky Media Player for Palm OS plays the proprietary video format (.sky.pdb) developed by ActiveSky. ActiveSky Media Player allows you to open, play, pause, and stop SKY files. Included with some versions of the ActiveSky Media Player download (Windows) is ActiveSky Desktop Viewer. ActiveSky Desktop Viewer is a Windows application that allows SKY files to be previewed before transferring them to the mobile device.

This document explains how to download a copy of ActiveSky Media Player for Palm OS from our web site. It also explains how to obtain, install and play great video content on ActiveSky Media Player.

1.2 Features

ActiveSky Media Player can:

- View Previous SKY file, Stop, Play/Pause, Next frame, View Next SKY file during Playback mode.
- Display File Information about the selected SKY file.
- Customize player options to set the Screen Depth, Loop, Sound Effects, and Display Splash Screen.
- Use built in Help file to explain the use of each screen.
- Beam ActiveSky Media Player or SKY files to another Palm OS device.

1.3 ActiveSky Media Player Mobile Device Requirements

The requirements to run ActiveSky Media Player for Palm OS are:

- Device running Palm OS Version 3.0 or higher.
- At least 100kB of available memory for the program plus additional memory for SKY files.

Minimum desktop PC requirements for ActiveSky Desktop Viewer:

- Pentium PC with 32MB RAM running Windows 95, 98, NT 4.0 or 2000 (65536 color display or better).



2 Getting Started

2.1 Downloading ActiveSky Media Player

To download ActiveSky Media Player from our web site, go to the Palm OS Download area at www.activesky.com and follow the instructions displayed.

2.2 Installing ActiveSky Media Player

For PC users:

Once ActiveSky Media Player is downloaded onto the desktop PC it needs to be installed on the mobile device.

1. Connect the mobile device to the desktop PC.
2. Run the ActiveSky installation program that was downloaded onto the desktop PC.
3. Follow the instructions to install ActiveSky Media Player onto the mobile device.
4. Tap the **HotSync** icon on the mobile device. During HotSync, ActiveSky Media Player will be transferred from the desktop PC to the mobile device. It will then be available on the mobile device from the Applications Launcher

If there is a problem with the automatic installation then ActiveSky Media Player will need to be installed manually onto the mobile device. To do this:

1. Locate and start up the **Install Tool** program. (Install Tool is provided with your Palm OS device.)
2. Using the **Install Tool** program, locate and select the ".prc" file from the directory you specified during the installation process detailed above. Ensure you have read the "license.txt" in this directory. By installing ActiveSky Media Player on the mobile device you are agreeing to the terms and conditions outlined within this document.

Optionally, the files named "APSplashVid.pdb" and "APAboutVid.pdb" can also be installed. These are special splash screen videos that are used at different times in the interface. If there is room on the mobile device for these videos, we recommend installing them.

Click **Done**.

3. Ensuring that the mobile device is connected to the desktop PC tap the **HotSync** icon on the mobile device. During HotSync, ActiveSky Media Player will be transferred from the desktop PC to the mobile device. It will then be available on the mobile device from the Applications Launcher.



For Mac users:

Once ActiveSky Media Player is downloaded onto the Mac the downloaded ".sit" file needs to be extracted. After extraction is complete, read the "license.txt" file. By installing ActiveSky Media Player on the mobile device you are agreeing to the terms and conditions outlined within this document. The ".prc" file then needs to be installed on the mobile device.

1. Connect the mobile device to the Mac.
2. Locate and start up the **Install Tool** program. (Install Tool is provided with your Palm OS device.)
3. Using the **Install Tool** program, locate and select the ".prc" file from the directory the downloaded ".sit" file was extracted to.

Optionally, the files named "APSplashVid.pdb" and "APAboutVid.pdb" can also be installed. These are special splash screen videos that are used at different times in the interface. If there is room on the mobile device for these videos, we recommend installing them.

Click **Done**.

4. Tap the **HotSync** icon on the mobile device. During HotSync, ActiveSky Media Player will be transferred from the Mac to the mobile device. It will then be available on the mobile device from the Applications Launcher.

2.3 ActiveSky Media Player Registration

ActiveSky Media Player for Palm OS is limited to a 30 day trial version before the program must be registered. When ActiveSky Media Player is installed onto a device it is given a unique Device ID. A Registration Code for this Device ID must be given for the program to continue.

To Register ActiveSky Media Player for Palm OS:

1. From the Menu tap **Register ActiveSky...** to identify the Device ID. (Refer to section 3.2.2 on how to access the menu.)
2. Log on to our website at www.activesky.com, access the Registration section and follow the prompts.
3. Once the Registration Code has been obtained, enter the code in the Registration screen on the Palm OS mobile device and tap the **OK** button.

The ActiveSky Media Player for Palm OS is now registered.

2.4 Installing SKY files

Now that ActiveSky Media Player has been installed on the mobile device, SKY files can be installed to play.

Please be aware that Palm OS devices will not play SKY files that contain only a ".sky" file extension. Only SKY files that have been specifically encoded for the Palm OS can be used. These files can be identified by a ".sky.pdb" file extension. Renaming ".sky" files to ".sky.pdb" will not work. You must download the SKY files specifically encoded for the Palm OS.



SKY files can also be found at www.activesky.com or at one of many content provider web sites. Visit www.activesky.com for a list of these sites. Select a content provider then make sure you select the Palm OS files!

Once the SKY files have been downloaded, they can be installed onto the mobile device. To do this:

1. Connect the mobile device to the desktop PC or Mac.
2. Locate and start up the **Install Tool** program. (Install Tool is provided with your Palm OS device.)
3. Using the **Install Tool** program, locate and select the SKY files to be installed and click **Done**.
4. Tap the **HotSync** icon on the mobile device. These files will then be displayed on the Play List screen in ActiveSky Media Player.

Alternatively SKY files can be beamed from another Palm OS mobile device with SKY files. Refer to Section 3.3 on how to beam SKY files from a Palm OS mobile device.

3 Using ActiveSky Media Player

3.1 Opening ActiveSky Media Player

To open ActiveSky Media Player:

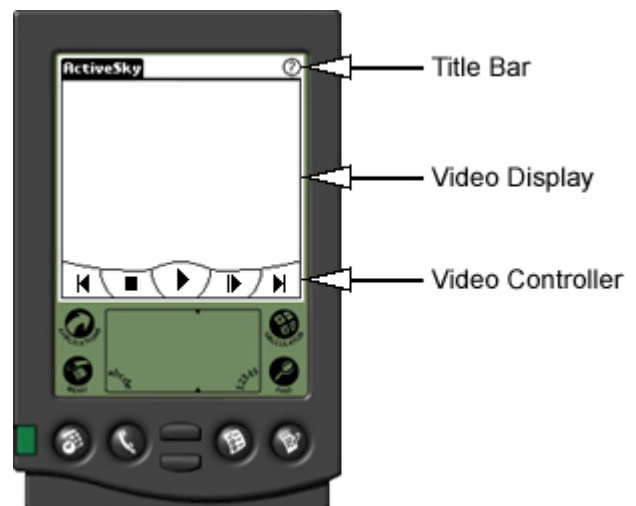
1. Switch on the mobile device.
2. Tap the **Applications** icon on the mobile device (refer to the mobile device user manual for location of this button).
3. Tap the **ActiveSky** icon.

This will open ActiveSky Media Player. The mobile device is now ready to start playing.

3.2 Getting Familiar

Before getting started, it's a good idea to be familiar with ActiveSky Media Player.

The application consists of a Title bar and menu, Video display section and a Video Controller.





3.2.1 The Play List Screen

The Play List screen appears automatically when ActiveSky Media Player is activated. The Play List screen contains a list of SKY files available on the mobile device to play.

3.2.2 Accessing the Menu

The menu is activated from the Play List screen by using the **Menu** button on the mobile device (refer to the mobile device user manual for location of this button) or by tapping on **ActiveSky** in the Title bar.



The menu contains the following options:

File Info	Displays a list of details about the selected SKY file.
Video Options...	Displays a list of options that allows the video player to be customized.
Help	Explains the use of each screen.
Beam Player	Beam ActiveSky Media Player to another Palm OS mobile device.
About ActiveSky...	Displays information about ActiveSky and ActiveSky Media Player.
Register ActiveSky...	Displays the Device ID for registration.

3.2.3 Video Controller

The Video Controller is displayed at the bottom of the screen and is used to control the video during playback.



The functions of the Video Controller are:



Previous

When a SKY file is in playback, tapping this button stops playback and selects and plays the previous SKY file in the Play List. If the selected SKY file is the first in the Play List, this file continues to play as normal.



Stop

Tapping this button stops playback of the open SKY file and displays the statistics screen if enabled. Otherwise it returns to the Play List screen.



Play



Pause

To play the selected SKY file, tap the **Play** button. Once the SKY file is in playback the **Play** button changes to a **Pause** button. Tapping the **Pause** button pauses the open SKY file at the current position. Once the SKY file is paused, the **Pause** button reverts back to the **Play** button. Tap the **Play** button again to resume playback of the open SKY file.



Frame Advance

Tapping this button when the selected SKY file is in playback pauses at the current position. Tap the button again to advance frame by frame. This button can also be used after the **Pause** button has been tapped to advance the open SKY file frame by frame. This feature is useful for slide shows or viewing comic strips.



Next

When a SKY file is in playback, tapping this button stops playback and selects and plays the next SKY file in the Play List. If the selected SKY file is the last in the Play List, then this file continues to play as normal.

3.2.4 Playing SKY Files

To play a SKY file:

1. Select the SKY file to be played from the Play List.
2. Tap the **Play** button on the Video Controller.

3.3 Viewing the SKY file Properties (File Info)

To view the properties of a SKY file:

1. Select the SKY file from the Play List screen.
2. Tap the **File Info** button at the bottom of the Play List screen or select **File Info** from the menu.

This will then display the following information, if available, about the selected SKY file:

File Name: Name of the SKY file.

Title: Title of the video.

File Size: Size of the SKY file in kBytes.

Date Created: Date the SKY file was created.

Frame Size: Width and height of the display size of the SKY file in pixels.

Content Rating: The rating of the SKY file, e.g. PG, AO, etc. There are many ratings that could be displayed.

Author: Name of the person who created the SKY file.

Copyright: Copyright details of the SKY file.

3. To delete the selected SKY file, tap the **Delete** button. A confirmation to delete the SKY file will be requested.
4. To beam the selected SKY file to another Palm OS device, tap the **Beam** button.
5. To exit File Info, tap the **Done** button.



3.4 Customizing ActiveSky Media Player (Video Options)

To customize ActiveSky Media Player:

1. Tap the **Options** button at the bottom of the Play List screen or select **Video Options...** from the menu.

The following options are available for modification:

Screen Depth: Black & White, 4 Gray, 16 Gray, 256 Color, 65535 Color (Default: Greatest depth supported by mobile device)

This option affects the screen depth that a video is played back at. Often choosing a lower screen depth will speed the video up. Its default value is whatever the best screen depth is that the mobile device currently can handle. If a mobile device is not able to display in any one of these depths, the depth will not be an available option.

Loop: Off, Selected Video, Play List (Default: Off)

If Loop is set to **Selected Video**, when the SKY file ends playback it is simply reset to the start and keeps playing until the stop button is pressed. If Loop is set to **Play List**, when the current SKY file ends the next SKY file in the Play List is played. When the last SKY file in the Play List has ended the first SKY file in the Play List is played. This will continue to cycle until the stop button is pressed.

Sound Effects: Off, Low, Medium, High (Default: High)

Adjusts the sound level of the beeps, when buttons are pressed.

Display Splash Screen: On/Off (Default: On)

When switched **On**, the ActiveSky splash screen, if installed, will be displayed when starting the program.

Upgrade Player Warning: On/Off (Default: On)

When enabled and a SKY file is played that might contain new features not supported by the current version of ActiveSky Media Player, a warning message will be displayed recommending that ActiveSky Media Player be upgraded. The SKY file will still be played, but may not look exactly as intended. If switched **Off**, no warning will be given.

2. Tap the **OK** button to exit with changes, or, tap the **Cancel** button to exit without changes.



3.5 Help

1. The Help screen can be accessed from any screen, by tapping the ? button in the top right corner, to provide context-sensitive help on whatever the user may be doing. Alternatively, help can be accessed by selecting **Help** from the menu.

If there is more than one page on the selected Help subject, the **Next** and **Previous** buttons on the Video Controller or the **Page Up** and **Page Down** buttons on the mobile device can flip between the Help file pages.

A help subject list is located on the Title Bar.

2. To exit Help, tap the **Done** button. (The user is returned to the screen from which they accessed Help.)

3.6 Beam Player

This function can be used to beam ActiveSky Media Player to another Palm OS mobile device. (Please refer to the mobile device user manual for tips on beaming applications.)

3.7 About ActiveSky

To view details about ActiveSky Media Player:

1. Select **About ActiveSky...** from the menu.
This displays the ActiveSky Media Player version, copyright information and the ActiveSky web site address.
2. To exit screen, tap the **OK** button.

3.8 Register ActiveSky

This will only be displayed on the menu if ActiveSky Media Player for Palm OS has not been registered. The screen contains the details of User Name, Device ID and a space to enter the Registration Code. Please visit our website at www.activesky.com to obtain a Registration Code.

3.9 Deleting a SKY file

To delete a SKY file:

1. Select the SKY file to be deleted from the Play List.
2. Tap the **File Info** button at the bottom of the Play List screen, or select **File Info** from the menu.
3. Tap the **Delete** button at the bottom of the File Info screen. A confirmation to delete the SKY file will be requested.

3.10 Uninstalling ActiveSky Media Player

To uninstall ActiveSky Media Player from the Palm OS device we recommend referring to the mobile device user manual for precise instructions on deleting applications.



4 Using ActiveSky Desktop Viewer (Windows only)

ActiveSky Desktop Viewer is a Windows application that allows SKY files to be previewed before transferring them to the Palm OS device. ActiveSky Desktop Viewer is included with some versions of the ActiveSky Media Player download (Windows) and is installed on the desktop PC during the ActiveSky Media Player installation process.

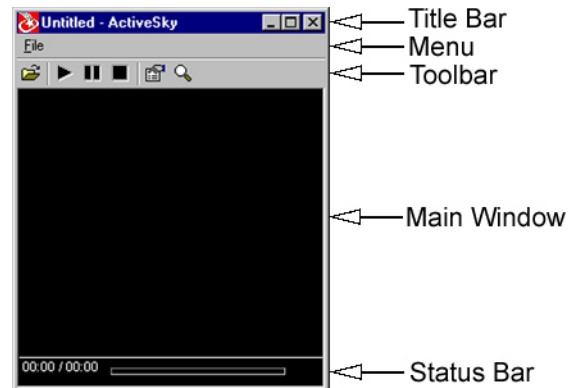
4.1 Opening ActiveSky Desktop Viewer

To open ActiveSky Desktop Viewer:

1. From the **Start/Programs/ActiveSky Media Player (Palm)** menu, select **ActiveSky Desktop Viewer**.

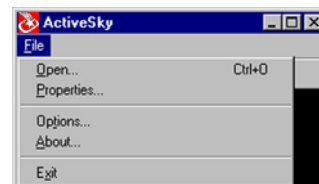
4.2 Getting Familiar

The application consists of a Title Bar, Menu, Toolbar, Main Window where the SKY videos are displayed and a Status Bar.



4.2.1 Accessing the Menu

Clicking **File** activates the File menu.



The File menu contains the following options:

- | | |
|----------------------|--|
| Open... | Opens a SKY file. |
| Properties... | Displays a list of properties about an open SKY file. |
| Options... | Displays a list of options that allow ActiveSky Desktop Viewer to be customized. |
| About... | Displays information about ActiveSky Desktop Viewer and ActiveSky. |
| Exit... | Closes and exits ActiveSky Desktop Viewer. |



4.2.2 Toolbar

The functions of the Toolbar are:



Open

Click this button to browse for and open a SKY file.



Play

Click this button to Play the open SKY file.



Pause



Next Frame

Clicking the **Pause** button when the SKY file is in playback pauses at current position. Once the SKY file is paused this button changes to the **Next Frame** button. Click this button again to advance frame by frame. This feature is useful for slide shows or viewing comic strips. Playback can be resumed at any time by clicking the **Play** button or Stopped by clicking the **Stop** button.



Stop

Clicking this button stops playback of the open SKY file and rewinds the file back to the beginning.



Options

Click this button to access the Options menu and customize ActiveSky Desktop Viewer.



Zoom

Clicking this button doubles the display size of the SKY file. If the display size is already doubled and the zoom button is clicked, this will reset the display size to normal.

4.2.3 Status Bar

The status bar at the bottom of the screen shows how long the SKY file has been playing, the total play time for the SKY file, a progress bar and a speaker icon if the SKY file contains an audio stream.



4.2.4 Playing SKY Files

To play a SKY file:

1. Select **Open...** from the File menu, or click the **Open** button on the toolbar.
2. Locate and select the SKY file to be played.
3. If Autoplay is enabled in the Options menu, the SKY file will begin to play automatically. Otherwise, click the **Play** button.



4.3 File Properties

To view the file properties of the open SKY file:

1. Select **Properties...** from the File menu.

The Properties are divided into 3 sections: General, Details and Statistics.

The General tab contains File name, Title, Author, Date Created and Copyright information. Information will only be displayed if available.

The Details tab contains File name, File type, File size (in kBytes), Media length (in mm:ss), Picture size (Width x Height in pixels), Total frames, Frame rate (per second) and the Audio format.

The Statistics tab contains File name, Total time (milliseconds) and Average frame rate (per second).

2. To exit screen, click the **Close** button.

4.4 Customizing ActiveSky Desktop Viewer (Options)

To customize ActiveSky Desktop Viewer:

1. Select **Options...** from the File menu or click the **Options** button.

The following options can be modified:

Playback speed: x0.5, x1, x2, Max (Default: x1).

Sets the speed of the SKY file in playback. Audio is only played during normal (x1) playback speed.

Autoplay on open: On/Off (Default: On).

Starts playing the SKY file as soon as it is opened.

Continuous play: On/Off (Default: Off).

Replays the SKY file in a continuous loop, until the **Stop** button is tapped.

Audio mute: On/Off (Default: Off).

Silences the audio stream, if one exists, of the SKY file.

2x Zoom: On/Off (Default: Off).

Doubles the display size of the SKY file.

Show status bar: On/Off (Default: Off).

Show or Hide the status bar.

2. Click the **OK** button to exit with new changes, or, click the **Cancel** button to exit without new changes.



4.5 About ActiveSky Desktop Viewer

To view details about ActiveSky Desktop Viewer:

1. Select **About...** from the File menu.

This displays the ActiveSky Desktop Viewer version, copyright information and the ActiveSky web site address.

2. To exit screen, click the  close button.

4.6 To Exit ActiveSky Desktop Viewer

To Exit ActiveSky Desktop Viewer:

1. Select **Exit...** from the File menu.

Contact and Technical Support

For ActiveSky technical support, please contact us by e-mail at palm_support@activesky.com.

ActiveSky support is limited to ActiveSky provided products only.

For more information about ActiveSky, see our web site at www.activesky.com.

Thank you for using ActiveSky technology!

Copyright Notices

Copyright ©2000 ActiveSky Inc. All Rights Reserved.

Microsoft and Windows are registered trademarks of the Microsoft Corporation.

Palm(tm) and Palm OS(r) are registered trademarks of Palm Inc.

All other products are trademarks of their respective owners.