

API Magic

Copyright ©1995 by Mel Warwick

Click on the topic you require information on.

[Overview](#)

[Toolbar Button](#)

[User Interface](#)

[Distribution Rights](#)

[Disclaimer](#)

[Software Support](#)

[Acknowledgements](#)

Overview

API MAGIC is designed to simplify the use of the Windows API (Application Programmers Interface) within Visual BASIC code.

The Windows API contains hundreds of functions. You can use many of these with Visual BASIC to enhance your code and reach some parts of Windows that Visual BASIC simply cannot reach.

However, to access the Windows API from Visual BASIC you must declare the API routines you are going to use in your source code - along with any constants and structures these routines need. These declarations must be syntactically correct. Many are long and ambiguous and therefore prone to typographical errors when being manually input into code.

API MAGIC is a database of the declarations, constants and structures required to access the Windows API (including multimedia extensions). It enables you to select those you require and paste them directly into your code if a Visual BASIC code window is open. If a code window is not open they are pasted to the clipboard.

In addition, as this application is for use with Visual BASIC, the Visual BASIC constants have also been included. Some minor changes have had to be made to the Visual BASIC constants as Microsoft has defined some (in the file CONSTANT.TXT) as having the same name but different assignments (Variable constants????). Those affected pertain to Visual BASIC control's **BorderStyle**, **DrawStyle** and **FillStyle** properties. To differentiate them their constants have been prefixed with **BS_**, **DS_** and **FS_** respectively.

Toolbar Button



If Visual BASIC is currently loaded when API MAGIC is loaded an extra button will be added to the Visual BASIC toolbar.

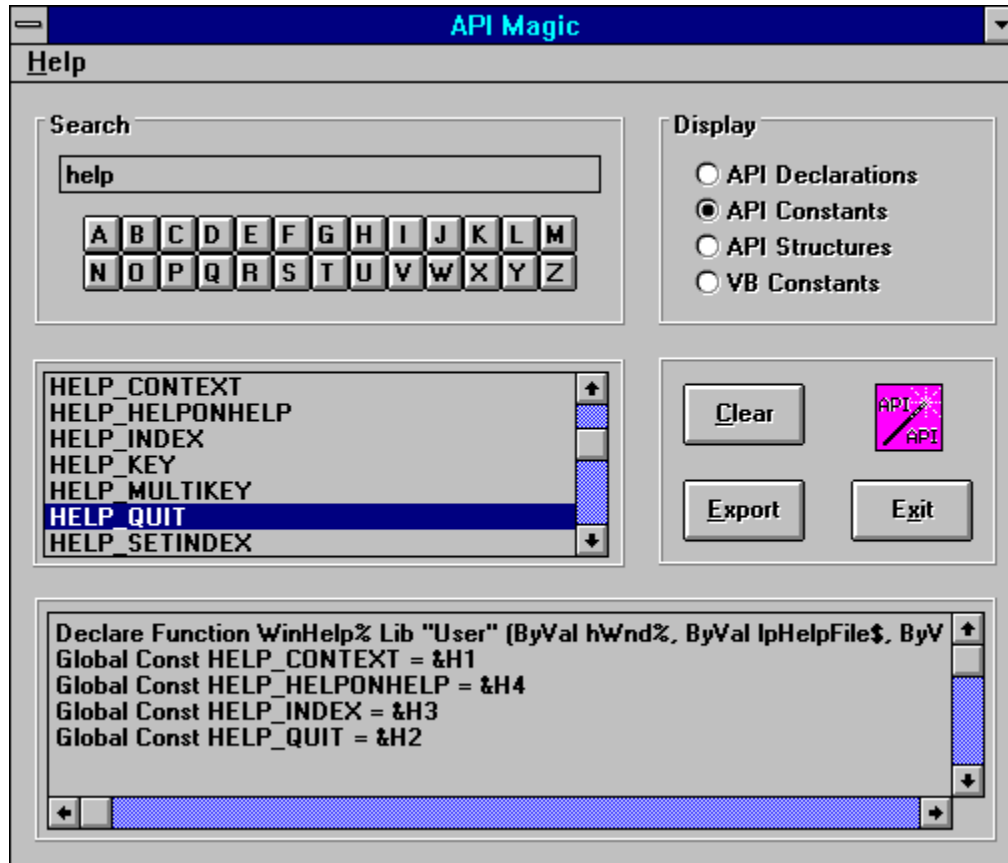
The button, when clicked, will bring API MAGIC to the front of the screen even if it is currently minimised.

Should you not wish this button added to the Visual BASIC toolbar either:

1. Load API MAGIC **before** loading Visual BASIC
- or -
2. Load API MAGIC using **any** command argument (e.g. APIMAGIC -n).

User Interface

Move the mouse pointer over the area of interest and click to reveal specific information.



Distribution

The program API MAGIC, and its Visual BASIC source code, are released by the author as FREeware. Copyright is retained.

You are at liberty to distribute copies of the program as long as no monetary charge is made and the program, source code and documentation are not altered in any way. Within the privacy of your own home you can do what you like to the program... bang a nail into it... slap it between two slices of bread and call it a sarnie.... Any such modified copies **must** be for your personal use and **must not** be distributed.

Disclaimer

You own and run copies of API MAGIC entirely at your own risk. API MAGIC is distributed '**as is**' without warranty of any kind. It is up to you to determine whether to let it anywhere near your beloved machine.

IN NO EVENT WILL THE AUTHOR BE LIABLE OR RESPONSIBLE FOR ANY LOSS, DAMAGE OR ANY OTHER PROBLEM CAUSED BY THE USE OF API MAGIC. THE TOTAL RISK OF USING API MAGIC RESTS WITH THE USER.

Software Support

If you have any problems with API MAGIC or have any suggestions for its enhancement you may contact the author:

Mel Warwick

via FidoNet at:

2:252/21.93

or by mail at:

**70 Derwent Road
GRANTHAM
Lincs. NG31 7PD**

Acknowledgements

This program would not have been possible without reference to what is widely regarded as the definitive text for anyone using the Windows API with Visual BASIC.

Title: **PC Magazine Visual BASIC Programmer's Guide to the Windows API**

Author: **Daniel Appleman**

Publisher: **Ziff-Davis Press**

ISBN: **1-56276-073-4**

I thoroughly recommend this book to anyone considering delving into the Windows API via Visual BASIC.

FidoNet is an international amateur electronic mail network.

This area displays the title of the application.

Click this button to access the program's Control menu.

This menu contains commands used to control the program window.

Click on this button to clear the output box of all function declarations, constants and structures.

Click on this button to export (copy) the function declarations, constants and structures in the output box to the clipboard. If a Visual BASIC code window is open they will be pasted directly into that code window at the current cursor position of that window.

Click on this button to terminate the program.

Click on this menu to access this help text and the API MAGIC 'About' screen.

Click on this button to reduce the program window to an icon.

Enter here the name of the function, constant or structure you wish to locate. As you type the select box will jump to the closest match to the entered text. Pressing the [Enter] key will copy the currently highlighted entry in the select box to the output box.

Click on one of these buttons to jump to the next function declaration, constant or structure that starts with the letter on the face of the button.

Click on one of these four option buttons to select which out of API function declarations, API constants, API structures or Visual BASIC constants are displayed in the select box.

This is the **select box**. It displays the titles of the function declarations, constants or structures.

Double click on an item in this box to copy its full definition to the output box.

This is the **output box**. It holds the function declarations, constants and structures that will be pasted to the Visual BASIC code window or clipboard when the **Export** button is clicked.

You can edit the text in the output box but normally, to prevent the introduction of errors, you should leave the text alone.

Clicking on this icon will toggle the animation of API MAGIC's icons on and off with each click.

