

**SAMPLE**

This is a simple Visual Basic application used to demonstrate the capabilities of Vision StoryBoard. This application is used in the Vision StoryBoard User's Guide.

- |    |               |         |
|----|---------------|---------|
| 1. | Support Forms | (Group) |
| 2. | Customer      | (Form)  |
| 3. | Order         | (Form)  |
| 4. | Product       | (Form)  |

This form group contains the application forms that are used as the starting point or provide only information.

- |    |       |        |
|----|-------|--------|
| 5. | Main  | (Form) |
| 6. | About | (Form) |

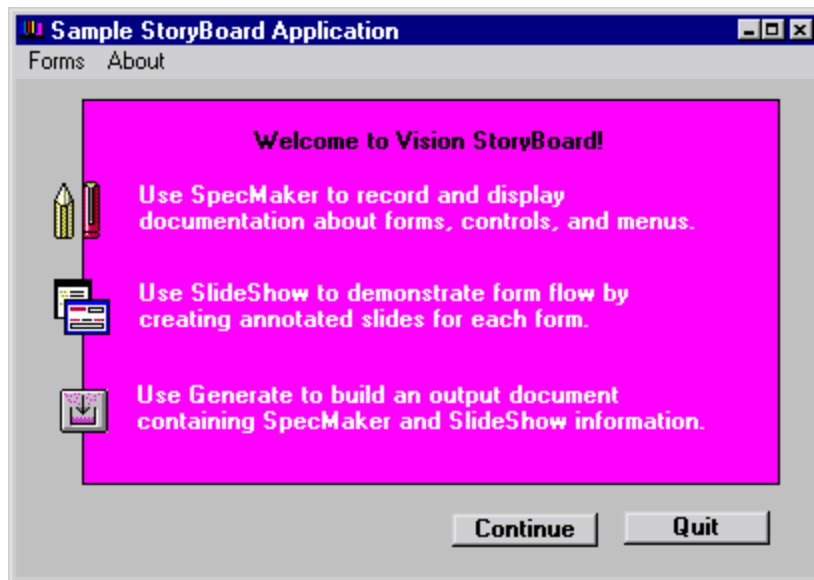
7.

8.

9.

10. Form service as initial form and provides information about the features of Vision StoryBoard.

11.



12.

13.

14. #	15. Name	16. Type	17. Description
18. 1	19. Main	20. Form	21. Form service as initial form and provides information about the features of Vision StoryBoard.
22. 2	23. QuitApp Button	24. CommandButton	25. End the running of the application and close all associated windows.
26. 3	27. Continue Button	28. CommandButton	29. Dismiss the current window and display the Customer form for order entry.
30. 4	31. Label2(2)	32. Label	33.
34. 5	35. Label2(1)	36. Label	37.
38. 6	39. Label2(0)	40. Label	41.
42. 7	43. Label1	44. Label	45.
46. 8	47. GenerateImage	48. Image	49.
50. 9	51. SpecMakerImage	52. Image	53.
54. 10	55. SlideShowImage	56. Image	57.

14. #	15. Name	16. Type	17. Description
58. 11	59. welcome box	60. Label	61.
62. 12	63. Menutop (1)	64. Menu	65. Provides menu options that display the application forms.
66. 13	67. cusopt(1)	68. Menu	69. Present the Customer form in read-only mode. Provide a popup window to close form.
70. 14	71. prodopt(2)	72. Menu	73. Present the Product form in read-only mode. Provide a popup window to close form.
74. 15	75. orderopt(3)	76. Menu	77. Present the Order form in read-only mode. Provide a popup window to close form.
78. 16	79. aboutmenu(2)	80. Menu	81. Provide application information.

82.

### 83.

#### 84.

#### 85. 1. Main

86.

87. Requirements  
88.

91. Functional Description  
92.

95. End-user Documentation Notes  
96.

89. Display as the first form in the application. Two active buttons and a menu bar for viewing forms.  
90.

93. Form service as initial form and provides information about the features of Vision StoryBoard.  
94.

97. This is the first form in the application.  
98.

99.

### 100.

#### 101. 2. QuitAppButton

102.

103. Requirements  
104.

107. Functional Description  
108.

111. Design Information  
112.

115. Testing Information  
116.

119. End-user Documentation Notes  
120.

105. Cleans up all running processes and releases dlls.  
106.

109. End the running of the application and close all associated windows.  
110.

113.  
114.

117.  
118.

121. Stop the application and closes all windows.  
122.

123.

### 124.

#### 125. 3. ContinueButton

126.

127. Requirements  
128.  
131. Functional  
Description  
132.  
135. Design  
Information  
136.  
139. Testing  
Information  
140.  
143. End-user  
Documentation Notes  
144.

129. Always be active.

130.

133. Dismiss the current window and display the Customer form for order entry.

134.

137.

138.

141.

142.

145. Displays the Customer form for customer data entry, change, or deletion.

146.

147.

**148.**

**149. 4. Menutop(1)**

150.

151. Requirements  
152.  
155. Functional  
Description  
156.  
159. End-user  
Documentation Notes  
160.

153. First menu item on the menu bar.

154.

157. Provides menu options that display the application forms.

158.

161. The Forms menu allows you to view each of the application form. To close the form click on OK in the popup window.

162.

163.

**164.**

**165. 5. cusopt(1)**

166.

167. Requirements  
168.  
171. Functional  
Description  
172.  
175. End-user  
Documentation Notes  
176.

169.

170.

173. Present the Customer form in read-only mode. Provide a popup window to close form.

174.

177. Displays the Customer form with data entry disabled.

178.

179.

**180.**

**181. 6. prodopt(2)**

182.

183. Requirements  
184.  
187. Functional  
Description  
188.  
191. End-user  
Documentation Notes  
192.

185.

186.

189. Present the Product form in read-only mode. Provide a popup window to close form.

190.

193. Displays the Product form with data entry disabled.

194.

195.

**196.**

**197. 7. orderopt(3)**

198.

199.	Requirements	201.	
200.		202.	
203.	Functional	205.	Present the Order form in read-only mode. Provide a popup
204.	Description		window to close form.
207.	End-user	206.	
208.	Documentation Notes	209.	Displays the Orders form with data entry disabled.
211.		210.	
212.			
213.	<b>8. aboutmenu(2)</b>		
214.			
215.	Requirements	217.	
216.		218.	
219.	Functional	221.	Provide application information.
220.	Description	222.	
223.	End-user	225.	Display the application About Box.
224.	Documentation Notes	226.	

227.

**228.**

**229.**

230. Provides information about the sample Vision StoryBoard application.

**231.**



**232.**

**233.**

234. #	235. Name	236. Type	237. Description
238. 1	239. About	240. Form	241. Provides information about the sample Vision StoryBoard application.
242. 2	243. OKButton	244. CommandButton	245. Dismisses the current window.
246. 3	247. InfoLabel	248. Label	249.
250. 4	251. CorpLogoImage	252. Image	253.

254.

**255.**

**256.**

257. **1. About**

258.

259. Requirements  
260.  
263. Functional  
Description  
264.  
267. End-user  
Documentation Notes  
268.

261. Images no more than 16 color.  
262.  
265. Provides information about the sample Vision StoryBoard application.  
266.  
269. Vision StoryBoard information.  
270.

271.

**272.**

273. **2. OKButton**

274.

275. Requirements  
276.

277. Hide and release current window.  
278.

279. Functional	281. Dismisses the current window.
Description	282.
280.	
283. Design	285.
Information	286.
284.	
287. Testing	289.
Information	290.
288.	
291. End-user	293. Closes the About box.
Documentation Notes	294.
292.	



295.

**296.**

**297.**

298. To allow user to add, change, and delete customer information. And, view all customer orders.

**299.**

**300.**

**301.**

302. #	303. Name	304. Type	305. Description
306. 1	307. Customer	308. Form	309. To allow user to add, change, and delete customer information. And, view all customer orders.
310. 2	311. Frame1	312. Frame	313.
314. 3	315. Grid1	316. Grid	317. To present a history of all customer orders placed.
318. 4	319. SaveButton	320. CommandButton	321. To save all changes and addition to the database.
322. 5	323. NextCustomerButton	324. CommandButton	325. To display the next customer record in the set.
326. 6	327. PrevCustomerButton	328. CommandButton	329.
330. 7	331. OrderDetailButton	332. CommandButton	333. To display the Orders form with additional information about the selected order number.
334. 8	335. CloseButton	336. CommandButton	337. To close the window without saving any changes made.

302. #	303. Name	304. Type	305. Description
338. 9	339. CustomerAddressBox	340. TextBox	341.
342. 10	343. CustomerIDBox	344. TextBox	345. To allow new customer entry and deletion. Search criteria can be entered in this field.
346. 11	347. CustomerNameBox	348. TextBox	349. To display the customer's name and provide a secondary method of record retrieval.
350. 12	351. Label3	352. Label	353.
354. 13	355. Label2	356. Label	357.
358. 14	359. Label1	360. Label	361.
362. 15	363. DBmenu	364. Menu	365.
366. 16	367. findopt	368. Menu	369.
370. 17	371. addopt	372. Menu	373.
374. 18	375. delopt	376. Menu	377.
378. 19	379. recmenu	380. Menu	381. Provides menu options that display the application forms.
382. 20	383. clearopt	384. Menu	385.
386. 21	387. helpmenu	388. Menu	389.

390.

## 391.

### 392.

#### 393. 1. Customer

394.

395. Requirements  
396.

399. Functional  
Description

400.  
403. End-user  
Documentation Notes  
404.

397. Use as the first data entry form in the application. Provide movement to the next logical form, ability to save changes, and a close function. Provide record set scrolling.

398.

401. To allow user to add, change, and delete customer information. And, view all customer orders.

402.

405. This form allows you to add, modify, and delete customer information in the database. You can display detailed order information by selecting a order number and clicking on the See Order Details button.

406.

407.

## 408.

#### 409. 2. Grid1

410.

411. Functional  
Description

412.

415. End-user  
Documentation Notes  
416.

413. To present a history of all customer orders placed.

414.

417. To get more information about an order, select a number from the grid and click on the See Order Details button.

418.

419.

## 420.

421.     **3. SaveButton**

422.			
423.	Requirements	425.	Save all data changes.
424.		426.	
427.	Functional	429.	To save all changes and addition to the database.
Description		430.	
428.			
431.	Design	433.	
Information		434.	
432.			
435.	Testing	437.	
Information		438.	
436.			
439.	End-user	441.	Saves all data changes made to customer name and
Documentation Notes		address.	
440.		442.	

443.

**444.**  
445.     **4. NextCustomerButton**

446.			
447.	Requirements	449.	Maintain record set order.
448.		450.	
451.	Functional	453.	To display the next customer record in the set.
Description		454.	
452.			
455.	Design	457.	
Information		458.	
456.			
459.	Testing	461.	
Information		462.	
460.			
463.	End-user	465.	Click for the next customer record.
Documentation Notes		466.	
464.			

467.

**468.**  
469.     **5. PrevCustomerButton**

470.			
	471.	Requirements	473.
	472.		474.
	475.	Functional	477.
		Description	478.
	476.		
	479.	Design	481.
		Information	482.
	480.		
	483.	Testing	485.
		Information	486.
	484.		
	487.	End-user	489.
		Documentation Notes	490.
	488.		
			Click for the previous customer record.

491.

**492.**  
493.     **6. OrderDetailButton**

494.

495. Requirements  
496.

499. Functional  
Description  
500.

503. Design  
Information  
504.

507. Testing  
Information  
508.

511. End-user  
Documentation Notes  
512.

497. Execute a order query and display the Order form with the  
correct data.  
498.

501. To display the Orders form with additional information about  
the selected order number.  
502.

505.  
506.

509.  
510.

513. Displays all order details for the order that you selected in  
the grid.  
514.

515.

**516.**

**517. 7. CloseButton**

518.

519. Requirements  
520.

523. Functional  
Description  
524.

527. Design  
Information  
528.

531. Testing  
Information  
532.

535. End-user  
Documentation Notes  
536.

521. Closes the window without executing unsaved changes.  
522.

525. To close the window without saving any changes made.  
526.

529.  
530.

533.  
534.

537. Closes the Customer form without committing unsaved  
changes.  
538.

539.

**540.**

**541. 8. CustomerAddressBox**

542.

543. Requirements  
544.

547. Functional  
Description  
548.

551. Design  
Information  
552.

555. Testing  
Information  
556.

559. End-user  
Documentation Notes  
560.

545.  
546.  
549.  
550.

553.  
554.

557.  
558.

561. The customer's address. You can modify the address if  
needed.  
562.

563.

**564.**

**565. 9. CustomerIDBox**

566.

567. Requirements  
568.

571. Functional  
Description  
572.

575. Design  
Information  
576.

579. Testing  
Information  
580.

583. End-user  
Documentation Notes  
584.

569. Test business rule for new customer number entry and  
search criteria. Perform appropriate database search.

570.

573. To allow new customer entry and deletion. Search criteria  
can be entered in this field.

574.

577.

578.

581.

582.

585. Enter the customer's number by using the format **##-#-####**.  
You can also search for a customer by number.

586.

587.

**588.**

589. **10. CustomerNameBox**

590.

591. Requirements  
592.

595. Functional  
Description  
596.

599. Design  
Information  
600.

603. Testing  
Information  
604.

607. End-user  
Documentation Notes  
608.

593. Display the results of the database query based on customer  
ID. Allow for database search criteria to be entered.

594.

597. To display the customer's name and provide a secondary  
method of record retrieval.

598.

601.

602.

605.

606.

609. The customer's name. You can search for a customer by  
naming by entering the appropriate search criteria.

610.

611.

**612.**

613. **11. DBmenu**

614.

615. Requirements  
616.

619. Functional  
Description  
620.

623. End-user  
Documentation Notes  
624.

617.

618.

621.

622.

625.

626.

627.

**628.**

629. **12. findopt**

630.

631. Requirements  
632.

635. Functional  
Description

633.

634.

637.

638.

636.			
639.	End-user	641.	
	Documentation Notes	642.	
640.			
643.			
<b>644.</b>			
645.	<b>13. addopt</b>		
646.			
	647. Requirements	649.	
	648.	650.	
	651. Functional	653.	
	Description	654.	
	652.		
	655. End-user	657.	
	Documentation Notes	658.	
	656.		
659.			
<b>660.</b>			
661.	<b>14. delopt</b>		
662.			
	663. Requirements	665.	
	664.	666.	
	667. Functional	669.	
	Description	670.	
	668.		
	671. End-user	673.	
	Documentation Notes	674.	
	672.		
675.			
<b>676.</b>			
677.	<b>15. recmenu</b>		
678.			
	679. Requirements	681.	First menu item on the menu bar.
	680.	682.	
	683. Functional	685.	Provides menu options that display the application forms.
	Description	686.	
	684.		
	687. End-user	689.	
	Documentation Notes	690.	
	688.		
691.			
<b>692.</b>			
693.	<b>16. clearopt</b>		
694.			
	695. Requirements	697.	
	696.	698.	
	699. Functional	701.	
	Description	702.	
	700.		
	703. End-user	705.	
	Documentation Notes	706.	
	704.		
707.			
<b>708.</b>			

709.     **17. helpmenu**

710.

711.     Requirements

713.

712.

714.

715.     Functional

717.

Description

718.

716.

719.     End-user

721.

Documentation Notes

722.

720.

723.

**724.**

**725.**

726. To allow the update or creation of a customer order.

**727.**

**728.**

**729.**

730. #	731. Name	732. Type	733. Description
734. 1	735. Order	736. Form	737. To allow the update or creation of a customer order.
738. 2	739. OrderDe tails	740. Frame	741.
742. 3	743. CloseBut ton(1)	744. Comman dButton	745. To close the window without saving any changes made.
746. 4	747. OrderDe tail	748. Grid	749. To display the quanity and part number of the products that are ordered.
750. 5	751. SaveButt on(0)	752. Comman dButton	753. To save all changes and addition to the database.To save all changes and addition to the database.
754. 6	755. Product DetailsButton	756. Comman dButton	757. To display the Products form with additional information about the selected order number.
758. 7	759. ShipDat eBox	760. TextBox	761. To accept and display the date that the order is shipped.



730. #	731. Name	732. Type	733. Description
762. 8	763. OrderDateBox	764. TextBox	765. To display the date that the order is recorded.
766. 9	767. OrderIdBox	768. TextBox	769. A display only field that either displays an existing number or assigns one for a new order. If a new order, generates the value for OrderDate.
770. 10	771. Label4	772. Label	773.
774. 11	775. Label3	776. Label	777.
778. 12	779. Label2	780. Label	781.
782. 13	783. ShipOptions	784. Frame	785.
786. 14	787. FederalChk	788. CheckBox	789. One of three valid shipping method for shipment and billing calculation. This choice is for Federal Express overnight.
790. 15	791. UnitedChk	792. CheckBox	793. One of three valid shipping method for shipment and billing calculation. This choice is for United Parcel Service.
794. 16	795. SpeedyChk	796. CheckBox	797. One of three valid shipping method for shipment and billing calculation. This choice is for Speedy Shipping Company.
798. 17	799. SalePersonListCombo	800. ComboBox	801. To allow for the identification of the order's salesperson.
802. 18	803. Shipto	804. Frame	805.
806. 19	807. ShipAddressBox	808. TextBox	809. To allow for a alternate address for order shipment.
810. 20	811. NameBox	812. TextBox	813. To allow for a alternate address for order shipment.
814. 21	815. Customer	816. Frame	817.
818. 22	819. AddressBox	820. TextBox	821. Displays the customer's address and allows for updates.
822. 23	823. CustomerNameCombo	824. ComboBox	825. To display the customer name relative to the previous Customer form.
826. 24	827. Label1	828. Label	829.

830.

**831.**

**832.**

**833. 1. Order**

**834.**

835. Requirements  
836.

839. Functional  
Description

840.

843. End-user

837. Display the data associated with the order number selected on the Customer form.

838.

841. To allow the update or creation of a customer order.

842.

845. Use this form to retrieve order information and to create a

	Documentation Notes		new order. Detailed information about a product is available by selecting a product number and click on See Product Details.
	844.		846.
847.			
<b>848.</b>			
849.	<b>2. CloseButton(1)</b>		
850.			
	851. Requirements	853.	Closes the window without executing unsaved changes.
	852.	854.	
	855. Functional Description	857.	To close the window without saving any changes made.
	856.	858.	
	859. Design Information	861.	
	860.	862.	
	863. Testing Information	865.	
	864.	866.	
	867. End-user Documentation Notes	869.	Closes the Order form without committing unsaved changes.
	868.	870.	
871.			
<b>872.</b>			
873.	<b>3. OrderDetail</b>		
874.			
	875. Functional Description	877.	To display the quantity and part number of the products that are ordered.
	876.	878.	
	879. End-user Documentation Notes	881.	Enter the quantity and part number of the items ordered.
	880.	882.	
883.			
<b>884.</b>			
885.	<b>4. SaveButton(0)</b>		
886.			
	887. Requirements	889.	Save all data changes.
	888.	890.	
	891. Functional Description	893.	To save all changes and addition to the database.To save all changes and addition to the database.
	892.	894.	
	895. Design Information	897.	
	896.	898.	
	899. Testing Information	901.	
	900.	902.	
	903. End-user Documentation Notes	905.	Saves all data changes made to customer order.
	904.	906.	
907.			
<b>908.</b>			
909.	<b>5. ProductDetailsButton</b>		
910.			
	911. Requirements	913.	Execute a order query and display the Product form with the correct data.
	912.		

915.	Functional Description	914.	
916.		917.	To display the Products form with additional information about the selected order number.
919.	Design Information	918.	
920.		921.	
923.	Testing Information	922.	
924.		925.	
927.	End-user Documentation Notes	926.	
928.		929.	Displays all product details for the product that you selected in the grid.
931.		930.	
<b>932.</b>			
933.	<b>6. ShipDateBox</b>		
934.			
935.	Requirements	937.	Date entered must meet business rules.
936.		938.	
939.	Functional Description	941.	To accept and display the date that the order is shipped.
940.		942.	
943.	Design Information	945.	
944.		946.	
947.	Testing Information	949.	
948.		950.	
951.	End-user Documentation Notes	953.	Enter the date that the order was shipped to the customer.
952.		954.	
955.			
<b>956.</b>			
957.	<b>7. OrderDateBox</b>		
958.			
959.	Requirements	961.	If new order, assign the current date as the order date.
960.			Read-only.
963.	Functional Description	962.	
964.		965.	To display the date that the order is recorded.
967.	Design Information	966.	
968.		969.	
971.	Testing Information	970.	
972.		973.	
975.	End-user Documentation Notes	974.	
976.		977.	Display-only field.
979.		978.	
<b>980.</b>			
981.	<b>8. OrderIdBox</b>		
982.			
983.	Requirements	985.	ID numbers must be unique.

984.		986.	
987.	Functional	989.	A display only field that either displays an existing number or assigns one for a new order. If a new order, generates the value for OrderDate.
988.	Description	990.	
		993.	
991.	Design	994.	
992.	Information		
995.	Testing	997.	
996.	Information	998.	
999.	End-user	1001.	Enter a valid order for a new order using the format A#### where A is a letter.
1000.	Documentation Notes	1002.	
1003.			
1004.			
1005.	<b>9. FederalChk</b>		
1006.			
	1007. Requirements	1009.	Route order record for the appropriate shipment.
	1008.	1010.	
	1011. Functional	1013.	One of three valid shipping method for shipment and billing calculation. This choice is for Federal Express overnight.
	1012.	1014.	
	1015. Design	1017.	
	1016.	1018.	
	1019. Testing	1021.	
	1020.	1022.	
	1023. End-user	1025.	Check this box for Federal Express overnight delivery.
	1024.	1026.	
1027.			
1028.			
1029.	<b>10. UnitedChk</b>		
1030.			
	1031. Requirements	1033.	Route order record for the appropriate shipment.
	1032.	1034.	
	1035. Functional	1037.	One of three valid shipping method for shipment and billing calculation. This choice is for United Parcel Service.
	1036.	1038.	
	1039. Design	1041.	
	1040.	1042.	
	1043. Testing	1045.	
	1044.	1046.	
	1047. End-user	1049.	Check this box for the United Parcel Service ground delivery.
	1048.	1050.	
1051.			
1052.			
1053.	<b>11. SpeedyChk</b>		
1054.			
	1055. Requirements	1057.	Route order record for the appropriate shipment.

1056.		1058.	
1059.	Functional	1061.	One of three valid shipping method for shipment and billing calculation. This choice is for Speedy Shipping Company.
1060.	Description	1062.	
1063.	Design	1065.	
1064.	Information	1066.	
1067.	Testing	1069.	
1068.	Information	1070.	
1071.	End-user	1073.	Check this box for the Speedy Shipping Company delivery.
1072.	Documentation Notes	1074.	
1075.			
1076.			
1077.	<b>12. SalePersonListCombo</b>		
1078.			
1079.	Requirements	1081.	Propagate list with valid salesperson for the customer's region.
1080.		1082.	
1083.	Functional	1085.	To allow for the identification of the order's saleperson.
1084.	Description	1086.	
1087.	Design	1089.	
1088.	Information	1090.	
1091.			
1092.			
1093.	<b>13. ShipAddressBox</b>		
1094.			
1095.	Requirements	1097.	Accept and store alternate order address.
1096.		1098.	
1099.	Functional	1101.	To allow for a alternate address for order shipment.
1100.	Description	1102.	
1103.	Design	1105.	
1104.	Information	1106.	
1107.	Testing	1109.	
1108.	Information	1110.	
1111.	End-user	1113.	Enter the address of the person receiving the order shipment.
1112.	Documentation Notes	1114.	
1115.			
1116.			
1117.	<b>14. NameBox</b>		
1118.			
1119.	Requirements	1121.	Accept and store alternate order address.
1120.		1122.	
1123.	Functional	1125.	To allow for a alternate address for order shipment.
1124.	Description	1126.	
1127.	Design	1129.	
1128.	Information	1130.	

1128.			
1131.	Testing	1133.	
Information		1134.	
1132.			
1135.	End-user	1137.	Enter the name of the person receiving the order shipment.
Documentation Notes		1138.	
1136.			
1139.			
<b>1140.</b>			
1141.	<b>15. AddressBox</b>		
1142.			
1143.	Requirements	1145.	Data relationships are maintain
1144.		1146.	
1147.	Functional	1149.	Displays the customer's address and allows for updates.
Description		1150.	
1148.			
1151.	Design	1153.	
Information		1154.	
1152.			
1155.	Testing	1157.	
Information		1158.	
1156.			
1159.	End-user	1161.	Make changes to address as needed.
Documentation Notes		1162.	
1160.			
1163.			
<b>1164.</b>			
1165.	<b>16. CustomerNameCombo</b>		
1166.			
1167.	Requirements	1169.	Data relationships are maintained.
1168.		1170.	
1171.	Functional	1173.	To display the customer name relative to the previous
Description		Customer form.	
1172.		1174.	
1175.	Design	1177.	
Information		1178.	
1176.			

1179.

**1180.**

**1181.**

1182. Order item verification. To query the database based on product ID selected in the Order form and display the associated information. Form dismisses with OK button.

**1183.**

**1184.**

**1185.**

1186. #	1187. Name	1188. Type	1189. Description
1190. 1	1191. Product	1192. Form	1193. Order item verification. To query the database based on product ID selected in the Order form and display the associated information. Form dismisses with OK button.
1194. 2	1195. UnitsInStockBox	1196. TextBox	1197. Displays number of units in stock.
1198. 3	1199. UnitPriceBox	1200. TextBox	1201. Displays unit price.
1202. 4	1203. ProductNameBox	1204. TextBox	1205. Displays product name.
1206. 5	1207. SupplierIDBox	1208. TextBox	1209. Displays supplier ID.
1210. 6	1211. ProductIDBox	1212. TextBox	1213. Value brought forward from the Order form. Value used a base of database query.
1214. 7	1215. OKButton	1216. CommandButton	1217. Dismisses the current window.
1218. 8	1219. Label5	1220. Label	1221.
1222. 9	1223. Label4	1224. Label	1225.
1226. 10	1227. Label3	1228. Label	1229.
1230. 11	1231. Label2	1232. Label	1233.

1186. #	1187. Name	1188. Type	1189. Description
1234. 12	1235. Label1	1236. Label	1237.

1238.

## 1239.

### 1240.

#### 1241. 1. Product

1242.

1243. Requirements  
1244.

1247. Functional  
Description  
1248.

1251. End-user  
Documentation Notes  
1252.

1245. All fields are display only. Display of form disables all other active forms.

1246.

1249. Order item verification. To query the database based on product ID selected in the Order form and display the associated information. Form dismisses with OK button.

1250.

1253. Display product information for order availability and pricing verification.

1254.

1255.

### 1256.

#### 1257. 2. UnitsInStockBox

1258.

1259. Requirements  
1260.

1263. Functional  
Description  
1264.

1267. Design  
Information  
1268.

1271. Testing  
Information  
1272.

1275. End-user  
Documentation Notes  
1276.

1261. The correct stock quantity column value displays based on a query by product ID. Column name Invent.instock.

1262.

1265. Displays number of units in stock.

1266.

1269.  
1270.

1273.  
1274.

1277. This is a read-only field showing the number of product items in stock.

1278.

1279.

### 1280.

#### 1281. 3. UnitPriceBox

1282.

1283. Requirements  
1284.

1287. Functional  
Description  
1288.

1291. Design  
Information  
1292.

1295. Testing  
Information  
1296.

1285. The correct unit price column value displays based on a query by product ID. Column name Invent.price.

1286.

1289. Displays unit price.

1290.

1293.  
1294.

1297.  
1298.



1299. End-user Documentation Notes	1301. This is a read-only field showing the price of the selected product.
1300.	1302.
1303.	
<b>1304.</b>	
<b>1305. 4. ProductNameBox</b>	
1306.	
1307. Requirements	1309. The correct product name column value displays based on a query by product ID. Column name Product.prodname.
1308.	1310.
1311. Functional Description	1313. Displays product name.
1312.	1314.
1315. Design Information	1317.
1316.	1318.
1319. Testing Information	1321.
1320.	1322.
1323. End-user Documentation Notes	1325. This is a read-only field showing the product name.
1324.	1326.
1327.	
<b>1328.</b>	
<b>1329. 5. SupplierIDBox</b>	
1330.	
1331. Requirements	1333. The correct supplier ID column value displays based on a query by product ID. Column name Vendor.supplID.
1332.	1334.
1335. Functional Description	1337. Displays supplier ID.
1336.	1338.
1339. Design Information	1341.
1340.	1342.
1343. Testing Information	1345.
1344.	1346.
1347. End-user Documentation Notes	1349. This is a read-only field showing the Product supplier ID number.
1348.	1350.
1351.	
<b>1352.</b>	
<b>1353. 6. ProductIDBox</b>	
1354.	
1355. Requirements	1357. Read-only field. Database column Product.prodID.
1356.	1358.
1359. Functional Description	1361. Value brought forward from the Order form. Value used a base of database query.
1360.	1362.
1363. Design Information	1365.
1364.	1366.
1367. Testing Information	1369.
	1370.

1368.			
1371.	End-user	1373.	This is a read-only field showing the Product's ID number.
	Documentation Notes	1374.	
1372.			
1375.			
<b>1376.</b>			
1377.	<b>7. OKButton</b>		
1378.			
1379.	Requirements	1381.	Hide and release current window.
1380.		1382.	
1383.	Functional	1385.	Dismisses the current window.
	Description	1386.	
1384.			
1387.	Design	1389.	
	Information	1390.	
1388.			
1391.	Testing	1393.	
	Information	1394.	
1392.			
1395.	End-user	1397.	Closes the Product form.
	Documentation Notes	1398.	
1396.			

1399.

**1400.**

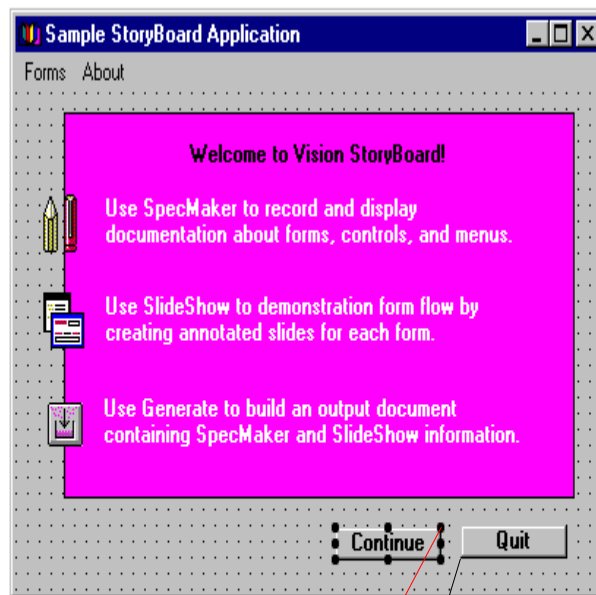
**1401.**

1402. #	1403. Name	1404. Description
1405. 1	1406. First Slide	1407. This is the first slide with jumps to About and Customer.
1408. 2	1409. Custome r	1410. Slide for the Customer form. This slide has two jumps.
1411. 3	1412. Order	1413. Slide for the Order form. This slide has two jumps.
1414. 4	1415. Product	1416. Slide for the Product form. This slide has a jump back to Order.
1417. 5	1418. About	1419. This is the slide for the About form. There is a jump back to Main.

1420.

**1421.**

## First Form In The Application

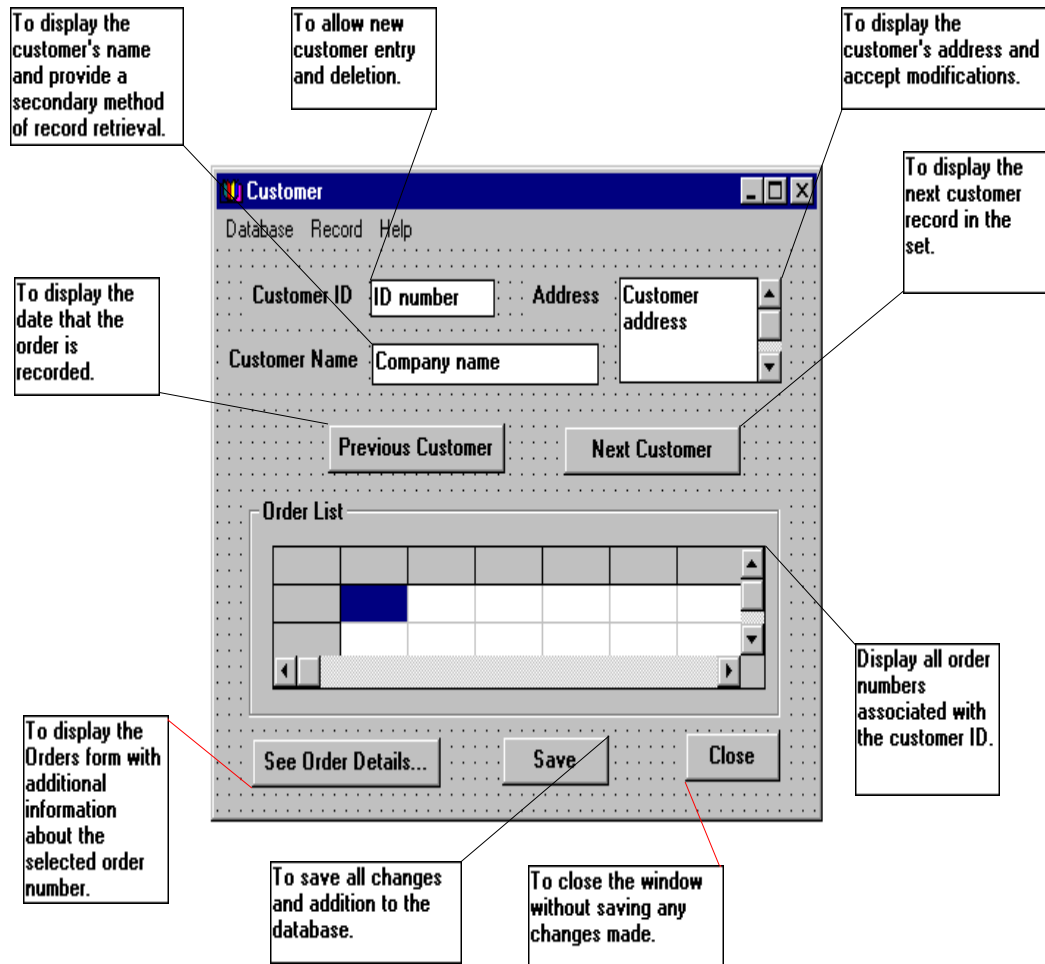


Dismiss the current window and display the Customer form for order entry.

End the running of the application and close all associated windows.

1422.

1423.



1424.

1425.

The screenshot shows a Windows-style application window titled "OrderEntry". The form is divided into several sections:

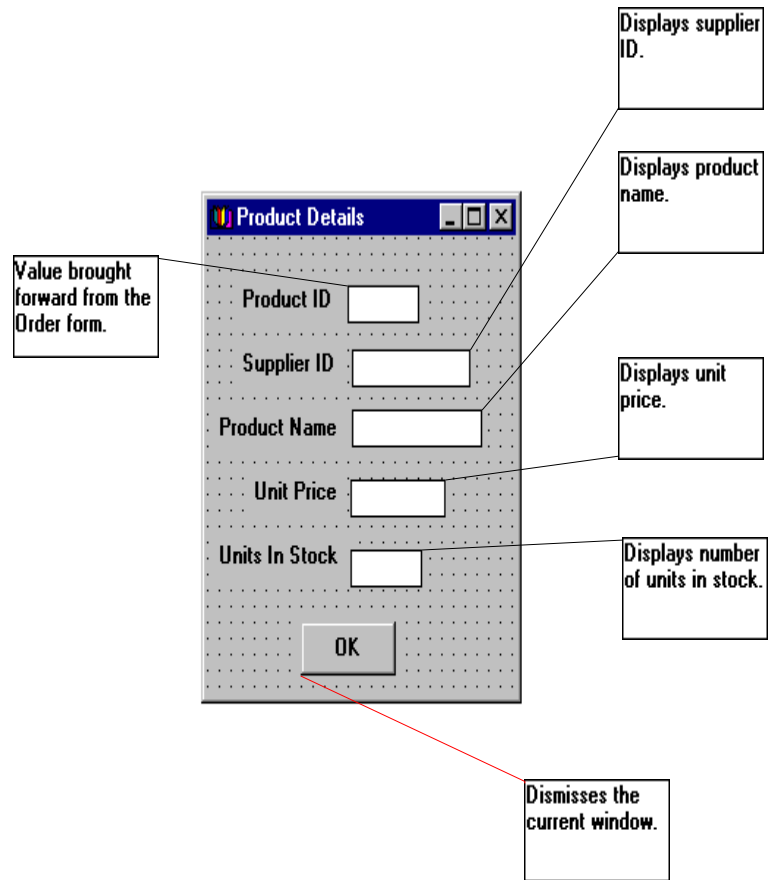
- Bill To:** Contains a dropdown menu labeled "CustomerNameCombo" and a text field labeled "Address".
- Ship to:** Contains a text field labeled "Name" and a text field labeled "Address".
- Sales Person:** A dropdown menu labeled "Combo1".
- Ship Via:** Three radio buttons labeled "Speedy", "United", and "Federal".
- Order Details:** A section containing three text fields for "OrderID", "OrderDate", and "ShipDate", followed by a table with multiple columns and rows. The second row of the table has a blue header. Below the table are three buttons: "See Product Details...", "Save", and "Close".

Callouts provide the following descriptions:

- To display the customer name relative to the previous Customer form.** (Points to CustomerNameCombo)
- Displays the customer's address and allows for updates.** (Points to the Address field under Bill To)
- One of three valid shipping method for shipment and billing calculation. This choice is for Speedy Shipping Company.** (Points to the Speedy radio button)
- To allow for a alternate address for order shipment.** (Points to the Name field under Ship to)
- To allow for a alternate address for order shipment.** (Points to the Address field under Ship to)
- One of three valid shipping method for shipment and billing calculation. This choice is for United Parcel Service.** (Points to the United radio button)
- One of three valid shipping method for shipment and billing calculation. This choice is for Federal Express overnight.** (Points to the Federal radio button)
- To allow for the identification of the order's salesperson.** (Points to Combo1)
- A display only field that either displays an existing number or assigns one for a new order. If a new order, generates the value for OrderDate.** (Points to the OrderID field)
- To accept and display the date that the order is shipped.** (Points to the ShipDate field)

1426.

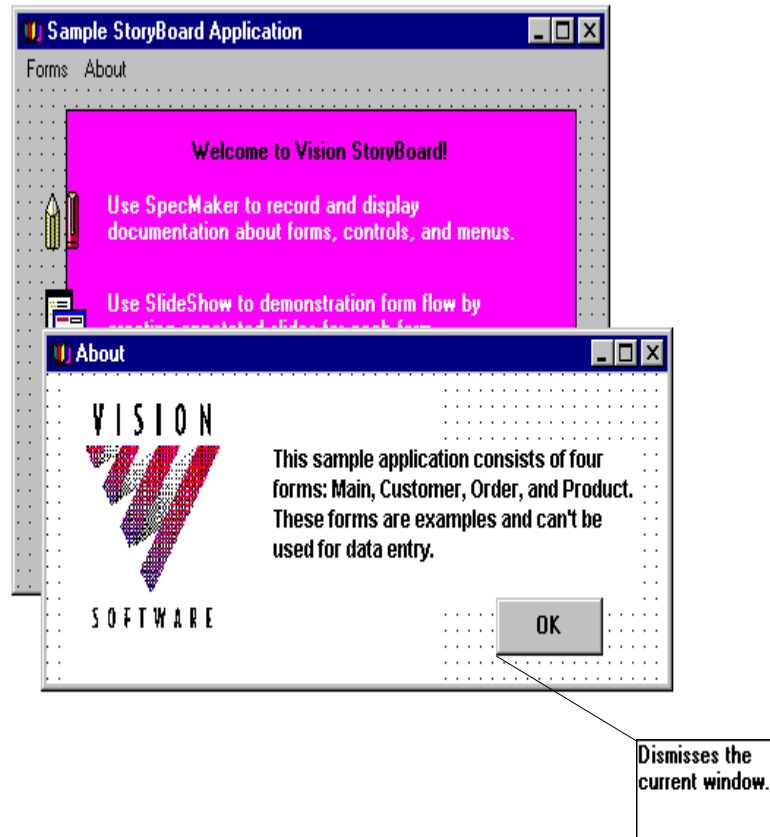
1427.



1428.



1429.



1430.

1431.