

# VB/Error Handler for VB 4.0 (16-Bit) (version 6.01)

## Contents

[Overview](#)

[VB/Error Handler \(16-Bit\)](#)

[Revision History](#)

[New Features](#)

[Installation](#)

[Technical Support](#)

[Registering 'VB/Error Handler \(16-Bit\)'](#)

[License Agreement](#)

[Distribution Note](#)

[Acknowledgement](#)

# @Blank

**Purpose :**

**Declare Syntax :**

**Call Syntax :**

**Where :**

**Comments :**

**Examples :**

**See also :**

Show the current routine in progress.

Activate this option box to switch to the French language.

## Online form with traced procedure

VB/Error Handler (v 5.00)

Total last same handle

1 29

On Top

counter	handle	module	routine
1	0024	VBHND-16.BAS	HandlerRemove
1	0023	VBHND-16.BAS	HandlerAdd
1	0024	VBHND-16.BAS	HandlerRemove
1	0023	VBHND-16.BAS	HandlerAdd
1	0024	VBHND-16.BAS	HandlerRemove
1	0023	VBHND-16.BAS	HandlerAdd
1	0024	VBHND-16.BAS	HandlerRemove
1	0023	VBHND-16.BAS	HandlerAdd
1	0027	VBHND-16.BAS	MessageDisplay
1	0029	VBHND-16.BAS	ReadText

VB/Error Handler (16-Bit)

# Parameters

The image shows a screenshot of a software window titled "VB/Error Handler (v5.00) for VB 4.0 (16-Bit)". The window has three tabs: "Preferences", "Parameters", and "View procedures". The "Parameters" tab is currently selected. It contains five parameter settings, each with a label and a group of radio buttons.

- parameter 1 : Language**
  - ☐ French
  - ☐ Dutch
  - ☐ German
  - ☒ English
  - ☐ Italian
  - ☐ Spanish
  - ☐ Catalan
  - ☐ Polish
- parameter 2 : Logging**
  - ☒ of All errors
  - ☐ No
- parameter 3 : Timeout for answer**
  - ☐ No timeout
  - ☐ 10 seconds
  - ☐ 20 seconds
  - ☒ 30 seconds
- parameter 4 : Default action after timeout**
  - ☒ RETRY after timeout has occurred
  - ☐ CANCEL after timeout has occurred
- parameter 5 : Display online routine**
  - ☐ Yes
  - ☒ No

VB/Error Handler (16-Bit)

Select the drive on which your .VBP file is installed.

## Distribution Note

When you create and distribute applications that use 'VB/Error Handler (16-Bit)', you should install the file **VBHND-16.DLL** in the customer's Microsoft Windows **WINDOWS\SYSTEM** subdirectory, the file **[Your Application].HND** in the customer's Microsoft Windows **WINDOWS** subdirectory and all **VBHND-16.V??** (language's files) in the customer's Microsoft Windows **WINDOWS** subdirectory. The setup kit included with Visual Basic provides tools that help you write setup programs that install your applications correctly.

*You are not allowed to distribute **'VBHND-16.LIC'** file with any application that you distribute.*



Select the directory on which your .VBP file is installed.

Show the file name in progress.

Check this 'check box' if you want that 'VB/Error Handler (16-Bit)' take care of your existing error handler.  
If this check is cleared, 'VEH' add automatically the error's management;  
If this check is checked, 'VEH' leave the routine with 'on error goto ...' unchanged.

Activate this option box to switch to the English language.

Push this command button to exit 'VB/Error Handler (16-Bit)'.

Choice if you want or not a timeout in the Error Message Box.

# Revision History

**See also :** [New Features](#)

Version	Comments
.	
5.00	Initial release of the 'VB/Error Handler (16-Bit)'.

# New Features

**See also :** [Revision History](#)

Version	Comments
---------	----------

5.00	Initial release of the 'VB/Error Handler (16-Bit)'.
------	---



# VB/Error Handler (16-Bit)

When you select 'Add' or 'Remove', a backup of modified files is made in sub-directory of the directory installation from 'VB/Error Handler (16-Bit)'.

When you select 'Add', the program adds automatically 2 modules called 'VBERR-16.BAS' and 'VBERR-16.FRM' to your .VBP file. This file is used to perform the error's management. You don't need to modify this file for your application. An another file [VBP name].HND is created and contains all datas for the error's management. This file must be copied into the WINDOWS directory.

Moreover, a call to 'mcInitID' routine is placed into the Main() routine (if exist) or into the MDIForm\_Load (if exist) or into the first Form\_Load encountered. This call have the 5 following parameters :

Call mcInitID(-1, True, 3, True, False)

Parameter 1 must be set to :

-1 if you want to use the English Language for the Error Message Box.

VB\_LNG\_FRENCH to use French Language

VB\_LNG\_DUTCH to use Dutch Language

VB\_LNG\_GERMAN to use German Language

VB\_LNG\_ENGLISH to use English Language

VB\_LNG\_ITALIAN to use Italian Language

VB\_LNG\_SPANISH to use Spanish Language

VB\_LNG\_CATALAN to use Catalan Language

VB\_LNG\_POLISH to use Polish Language

Parameter 2 must be set to :

TRUE if you want to make a logging of all errors (the log filename is placed into the WINDOWS directory).

FALSE if no logging.

Parameter 3 must be set to :

TRUE if no waiting time (user must be activate RETRY or CANCEL button).

1 for 10 seconds, 2 for 20 seconds, 3 for 30 seconds to wait before automatic action (see below).

Parameter 4 must be set to :

TRUE if you want to set the first button als default (RETRY = continue after waiting time has occurred).

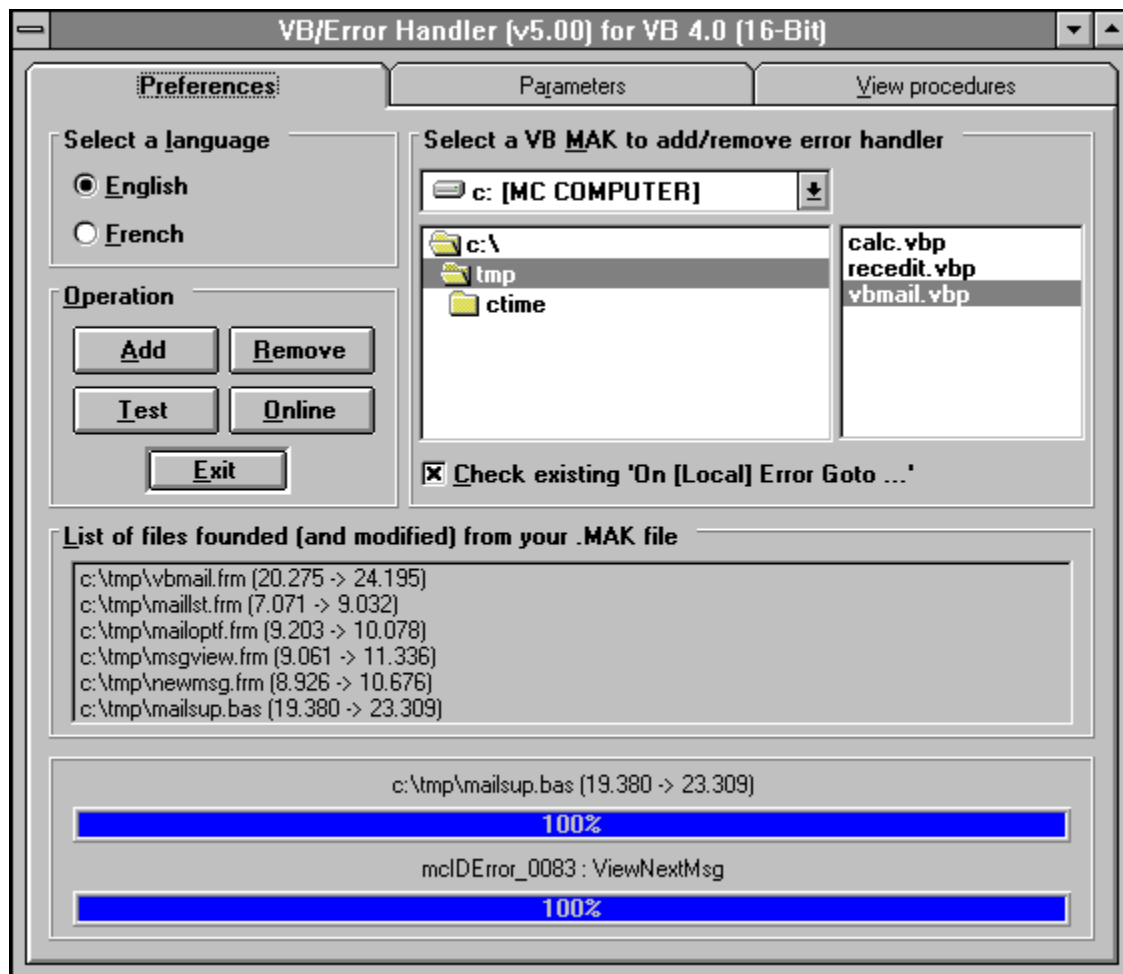
FALSE if you want to set the second button als default (CANCEL = stop after waiting time has occurred).

Parameter 5 must be set to :

TRUE if you want to see an online form with displayed procedure.

FALSE if no online form.

Below a snap of 'VB/Error Handler (16-Bit)'. Click on hot spots (hand cursor) to see a popup explain.



This list shows all files founden in your .VBP file.  
The list shows the current size and the new size of all files.

# Installation

## **Demonstration version :**

The files VBHND-16.DLL and VBHND-16.HLP should be copied in your WINDOWS directory.  
The files VBERR-16.HND, VBERR-16.LOG, VBHND-16.V?? should be copied in your WINDOWS directory.

## **Registered version :**

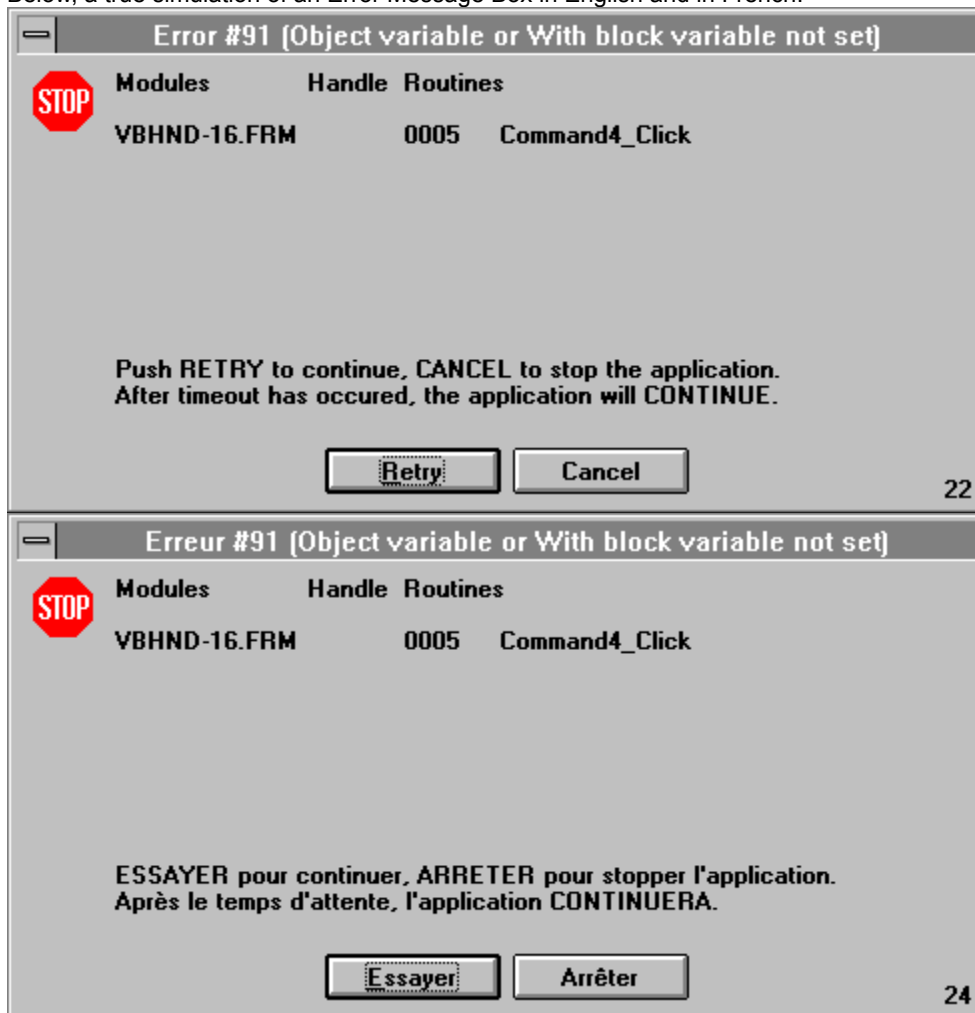
The files VBHND-16.DLL, VBHND-16.HLP should be copied in your WINDOWS\SYSTEM directory.  
The files VBERR-16.HND, VBERR-16.LOG, VBHND-16.V?? should be copied in your WINDOWS directory.  
The file VBHND-16.LIC should be copied in your WINDOWS directory.

## **Distribution note:**

When you create and distribute applications that use 'VB/Error Handler (16-Bit)', you should install the file [VBHND-16.DLL](#) in the customer's Microsoft Windows [WINDOWS\SYSTEM](#) subdirectory, the file [\[Your Application\].HND](#) in the customer's Microsoft Windows [WINDOWS](#) subdirectory and all [VBHND-16.V??](#) (language's files) in the customer's Microsoft Windows [WINDOWS](#) subdirectory. The setup kit included with Visual Basic provides tools that help you write setup programs that install your applications correctly.

*You are not allowed to distribute 'VBHND-16.LIC' file with any application that you distribute.*

Push this command button to start the test of a random error to see the result.  
Below, a true simulation of an Error Message Box in English and in French:



VB/Error Handler (16-Bit)

Push this command button to start the removing of the error's management.

The files 'VBERR-16.BAS' and 'VBERR-16.FRM' will be removed (if presents) from your .VBP file.

The file '[Your Application .VBP name].RHE' will be created and contains the following informations :

- name of the module/frm.

- old size of the module/frm.

- new size of the module/frm.

Push this command button to start the adding of the error's management.

The files 'VBERR-16.BAS' and 'VBERR-16.FRM' will be added (if not already presents) to your .VBP file.

The file '[Your Application .VBP name].AHE' will be created and contains the following informations :

- name of the module/frm.

- old size of the module/frm.

- new size of the module/frm.

Select a target language.  
This target language is used to display the Error Message Box.



The second part of 'Total same last handle' is the last handle of the routine in progress.

The first part of 'Total same last handle' is the total call of the last handle of the routine in progress.

Choice if you want or not a logging of errors.

This list shows the following topics :

Handle	the handle of the procedure.
Module	the name of the procedure.
Procedure	the name of the procedure in the module.

Push this button to start the reading of the procedure file.

Select a procedure file.

Select a directory on which procedure files are present.

Select a drive on which procedure files .HND are present.



# View Procedures



VB/Error Handler (16-Bit)

This list shows the following topics (cyclic 25 last routines) :

Counter	the number of calling the same routine.
Handle	the handle of the routine.
Module	the name of the module.
Routine	the name of the routine in the module.

Push this button if you want that the OnLine form is always on TOP.  
Repush this button to reset the on TOP position.

Push on the RETRY button to try to continue the application.

This part of the Error Message Box displays the action to take by the operator and the action if a TimeOut occurs.

This part of the Error Message Box displays the full path to retrieve the procedure on which the ERROR has occurred.

Show the progress of the current file in the .VBP file.

Show the progress of the current line in the current file.



Select the .VBP file.

# Technical Support

**Only registered users can receive support and update.**

To receive support, you must specify your registration ID.

However, any report on any problem are the welcome.

The following information may be of help to you in streamlining your efforts to resolve any technical problems you may have with 'VB/Error Handler (16-Bit)' program.

## **GPF?**

If you are getting a GPF (General Protection Fault), write down the information that is displayed when the error occurs. Also, make a note of what your code was doing (in general terms.)

## **ISOLATE IT**

Try to isolate the cause of the error. If at all possible, step through your code with F8 and F9. Try to find the one line of code that is causing the error.

## **SCALE IT DOWN**

If at all possible, try to reproduce the problem in a small test program that you can send in. Send your test on CompuServe.

## **CompuServe Mail:**

**Name : Michaël RENARD**  
**CIS : 100042,3646**  
**Internet : 100042.3646@compuserve.com**

I'm on CompuServe one time a day (after 19 o'clock European Time).

# License Agreement

The 'VB/Error Handler (16-Bit)' program and its associated DLL is not public domain software or free software.

The 'VB/Error Handler (16-Bit)' program and its associated DLL is copyrighted, and all rights are reserved by its author: Michaël Renard.

You are licensed to use this software on a restricted number of computers. You may copy the software to facilitate your use of it on as many computers as there are licensed users specified in the 'VB/Error Handler (16-Bit)' license file '**VBHND-16.LIC**'. Making copies for any other purpose violates international copyright laws.

*You are not allowed to distribute '**VBHND-16.LIC**' file with any application that you distribute.*

## **Disclaimer:**

This software is sold AS IS without warranty of any kind, either expressed or implied, including but not limited to the implied warranties of merchantability and fitness for a particular purpose. The authors assume no liability for any alleged or actual damages arising from the use of this software. (Some states do not allow the exclusion of implied warranties, so the exclusion may not apply to you.)

**Your use of this product indicates that you have read and agreed to these terms.**

# Acknowledgement

This help has been writed by using [ForeHelp](#) v1.04 from [ForeFront, Inc.](#)

Select RETRY, if you want an automatic retry of your application after the error.  
Select CANCEL, if you want to stop your application after the error.

# Overview

'VB/Error Handler (16-Bit)' is a program to add/remove automatically the error's management in a VB .VBP file.

'VB/Error Handler (16-Bit)' have an another approach to minimize the size of the .EXE. It use an external file did contains all routines founded in the source file. A basic module (VBERR-16.BAS) and a form module (VBERR-16.FRM) will be added to your application. The form module show the online traced procedure. However, a trapped error is displayed in a special Message Box (6 languages).

I hope that 'VB/Error Handler (16-Bit)' will be a great advantage for you and for your application.

'VB/Error Handler (16-Bit)' works ONLY with modules SAVED IN TEXT MODE.

# Registering 'VB/Error Handler (16-Bit)'

The easiest way to Register 'VB/Error Handler (16-Bit)' is through CompuServe's SWREG forum.

- 1) [GO SWREG](#)
- 2) Choose Register Shareware.
- 3.1) 'VB/Error Handler (16-Bit)' [SWREG ID](#) is : **#4379** (**ONLY** if you're a **REGISTERED** user of 'TIME TO WIN' #4045).
- 3.2) 'VB/Error Handler (16-Bit)' [SWREG ID](#) is : **#4380** (only if you're **NOT** a **REGISTERED** user of 'TIME TO WIN' #4045).

As soon as I receive notification of your registration (usually 1 - 3 days) I will send you out via e-Mail the latest version and a license file for one site (only if latest version is available (not currently in test)) if not you receive the license file for one site.

You also qualify to receive new versions of 'VB/Error Handler (16-Bit)' during one year.

[The price for 'VB/Error Handler \(16-Bit\)' is fixed at \\$20.00](#) (**ONLY** if you're a **REGISTERED** user of 'TIME TO WIN' #4045).

[The price for 'VB/Error Handler \(16-Bit\)' is fixed at \\$30.00](#) (only if you're **NOT** a **REGISTERED** user of 'TIME TO WIN' #4045).

**If you're NOT a REGISTERED user of 'TIME TO WIN' and you register 'VB/Error Handler (16-Bit)' at the low price (\$20.00), I can't send to you the product and I wait until that you register 'TIME TO WIN'.**

*This price is much a contribution to my works that a payment. When you register 'VB/Error Handler (16-Bit)', you help me to develop better products and others products.*

'VB/Error Handler (16-Bit)' is written in Visual Basic 4.0 and its associated DLL in C and compiled using Visual C++ 1.51.

The DLL code has been optimized for 80386 use with the 'maximize speed' option.

## **Others products :**

- |   |                            |
|---|----------------------------|
| 1) 'TIME TO WIN' and 'TIME TO WIN (16-Bit)<br>640 routines for VB 3.0 or VB 4.0). | SWREG #4045 (more over     |
| 2) 'TIME TO WIN Light'<br>routines for VB 3.0).                                   | SWREG #5808 (more over 360 |
| 3) 'VB/Tracer-Profiler'   | SWREG #5294.               |
| 4) 'Bundle of TIME TO WIN, VB/Error Handler (16-Bit), VB/Tracer-Profiler'         | SWREG #5499                |

Push on the CANCEL button to stop immediatly the application.



Display the Time remaining before an automatic decision will be made.

Choice if you want to display an online form with all traced procedure.  
Don't set this parameter in the distributed application.



