

FINWARE SYSTEMS

Product List

<u>Space Hound</u>	<u>Example Screen</u>
<u>Peeper</u>	<u>Example Screen</u>
<u>The Zoo</u>	<u>Example Screen</u>
<u>First Alert</u>	<u>Example Screen</u>
<u>Diskers</u>	<u>Example Screen</u>

Fineware Systems

- **Order Phone 1-800-544-1740**
- **fax orders 1-405-942-7819**
- **via CompuServe 70650,2022**
- **via America Online VB AL**
- **via Prodigy BBTK05A**
- **via Internet 70650.2022@CompuServe.Com**
- **via US Post Office:**

Fineware Systems
PO Box 75776
Oklahoma City, OK 73147

Visit our World Wide Web Site on the Internet: <http://www.fineware.com>

Copyright Notice

Copyright © 1994-1995 Fineware Systems and Al Meadows . All rights reserved.

Information on Space Hound

Space Hound is Fineware Systems' **flagship** product. It has received international recognition as a top notch Windows Utility. It's been mentioned in the pages of Windows Magazine, Windows Sources, PC Connect, ZiffNet Threads, and CompuServe Magazine. See Screen Shot

As a bonus, you will receive a copy of the shareware version of **Space Hound** with your paid registration to **Peeper**.

Just Released! Novell Netware Edition of Space Hound

Space Hound features:

The overall mission of the program is to sniff out wasted space on your hard disk that is duplicated, obsolete, and simply forgotten. The freely distributable shareware version has this as it's primary goal. The **Pro** version adds **additional** functionality for dealing with what is found.

Directory Map: Similar to the Windows File Manager in appearance, its main purpose is to provide a convenient method of evaluating disk storage usage within the directory plus the combined storage of all nested levels below.

Extensions Display: An organizational tool which allows you to group all files which share the same file extension name.

Duplicates Display: Allows for searches over one or more physical disk volumes for duplicate files. You may search for exact duplicates or only matching file names.

Files Display: Allows for search accross multiple disk volumes for multiple file pattern mask.

From these basic displays, you have a number of additional mini-functions available from each display.

Common functions available from all displays Include:

- Hard copy reports of complete or just partial information.
- Files can be compared at the bit-level.
- Version and file identification information extraction
- Files may be deleted from the hard disk utilizing any display
- Files may be copied or moved from any display

Specific functions of the **Directory Map Display** include:

- Printable Directory Map may be started at any level, not just root
- Storage totals at each directory plus nested sub directories
- File counts for each directory plus nested sub directories in the printed report
- Displays can be saved and later reloaded for further evaluation and action

Specific functions of the **Extensions Display** include:

- Collects all extension types in a single pass
- Printed report including all extensions or a single extension only
- Storage totals and file counts by extension

Specific functions of the **Duplicates Display** include:

- 3 distinct duplicate search functions
 - 1. Search for duplicate names. This is useful for finding files which have the same name but are different in size such as a DLL at version 1.0 and a DLL at version 1.1 might be.
 - 2. Search for duplicate names that are identical. This is probably the best search to run first because it limits the number of duplicate files to those which are truly identical to other files.

- 3. Search for duplicate files. This variation doesn't care what a file is called, it searches using CRC checking to identify duplicates.
- Collects all duplicates in a single pass
- Printed report including all duplicates found or on single duplicate name only
- Storage totals and file counts displayed by duplicate name
- Each search allows for the use of a filter which can limit the search to a set of specific file names or wild card patterns (Example: *.txt or Memo?????.*)

Additional functions:

A file viewer with support for over 20 file formats including ASCII, HEX, PCX, TIF, GIF, BMP, WMF, ICON, Microsoft Word, WordPerfect, AMI PRO, xBase, Paradox, Lotus, Excel, ZIP, LZH, Quattro Pro, MetaFiles, Q&A, Windows Write, and Microsoft Works. (New viewers are added from time to time and support for newer file formats updated as soon as possible.)

- Up to 9 file viewers may be open at a time. This will aid you in further evaluating the data that has been stored on your computer. The viewers may be launched via a button on the toolbar or by double clicking on the file from any of Space Hound Pro's program windows that list files.
- Enhanced version control information display for files containing version information .

Netware edition of Space Hound

An extended version of **Space Hound** suitable for "sniffing out" wasted space on your Novell server is available now. **It includes additional columns of data on each display which show file ownership, last updated by, and 4 netware specific date fields including accessed date, archived date, etc.**

Contact Fineware Systems for more information at 1-800-544-1740 or via fax at 1-405-942-7819.

Space Hound Screen Example

This example shows the duplicate file search display. The left side of the display shows the names of all of the duplicate files which were found. Columns indicating how many files and their combined storage help you to focus on the worst offenders. **Important note: Everyone has duplicate files, find yours today!**

The screenshot displays the Space Hound Pro application window. The title bar reads "Space Hound Pro - [Duplicate File Names: c:]". The menu bar includes "File", "Reports", "Window", and "Help". The toolbar contains various icons for file operations. The main window is divided into two panes. The left pane lists duplicate files with columns for Name, Files, and Size. The right pane shows details for the selected file, including File Size, Date, Time, and Path. At the bottom, there are status bars for "Items: 231", a "Cancel" button, a "Sheridan 3D" logo, "Items: 2", "Size: 128,864", and a footer with "Dynamic Link Library 3D Widgets Custom Controls (File Ver:3.0.1.0 Product Ver:3.0.0.0 OS:DOS-Win16)".

Name	Files	Size	File Size	Date	Time	Path
STARTDIR.FRM	2	36,694	64,432	7/16/93	3:28:04 PM	C:\SPACEH
STARTDIR.FRX	2	1,136	64,432	7/17/93	12:00:00 PM	C:\WIN\SY
SYMBOLD.FON	2	77,638				
SYMBOLF.FON	2	108,073				
TEST1.EXT	2	406,802				
THREED.VBX	2	128,864				
THREED.VB_	4	133,956				
TOOLS.ZIP	2	113,730				
TREEFORM.FRM	2	208,594				
TREEFORM.FRX	2	2,680				
UPDATE.WRI	2	25,600				
V18FCAMD.386	2	87,582				
V7UGA.3GR	2	22,784				
VBASSIST.LIC	2	74				

Items: 231

Cancel

Sheridan 3D

Items: 2

Size: 128,864

Dynamic Link Library 3D Widgets Custom Controls (File Ver:3.0.1.0 Product Ver:3.0.0.0 OS:DOS-Win16)

Duplicate file reports

39 63 39 40,643,136

Space Hound: \$37.95

Call us at **1-800-544-1740**. We accept **Visa, MasterCard,** and **American Express.**

Information on The Zoo

The Zoo is a place to put those "criters" that have been complicating your desktop. A simple and easy to use tab style interface provides a place for distinct groups of related programs or documents where they can be easily found. See [Screen Shot](#).

The best way to describe **The Zoo** is to call it a mini-shell. Unlike other programs which want to totally replace your Windows Program Manager, **The Zoo** works with Program Manager by allowing you to migrate only some of your existing groups and programs. This way you un-complicate your desk top without running into the all of those problems generally associated with using replacement shells. **Price: \$29.95 plus \$2 shipping/Handling (\$4 international)**

Features

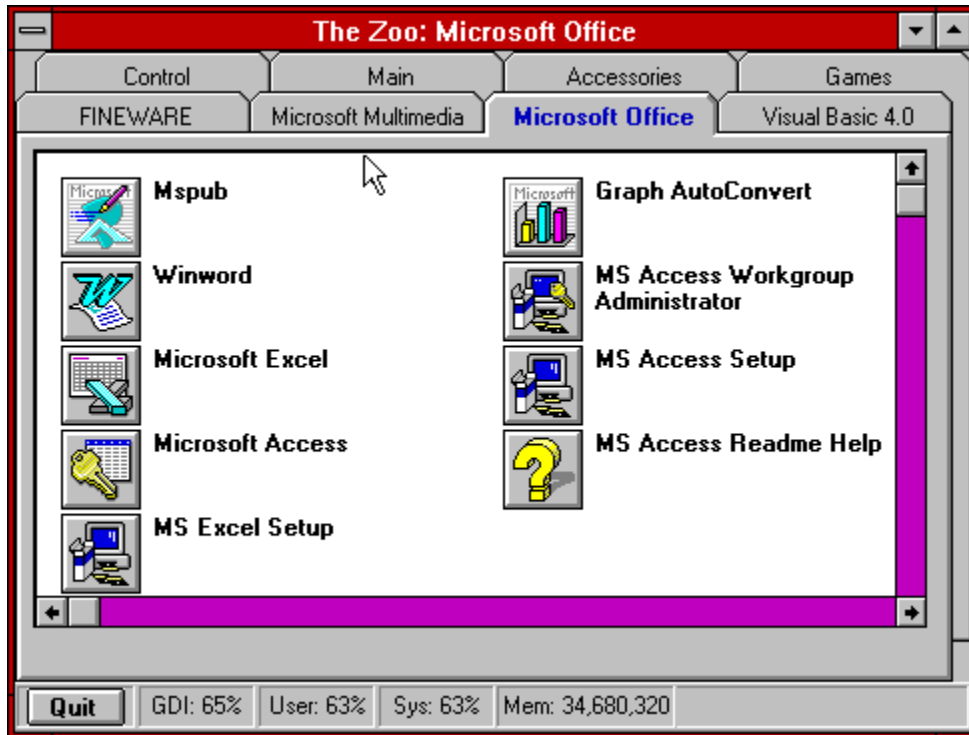
- Up to 40 programs or documents can be placed on a single tab window.
- Up to 40 different tab windows can be created.
- Each tab window can be customized for background color, font syle, fornt color, and launch item arrangment.
- Existing Program Manager group files can be imported
- Plenty of room for program descriptive names
- Constantly updated source and memory display
- Multiple instances of the program can be used at the same time. Setup one "Zoo" for frequently used programs and documents, another for the stuff you almost never use but still need to keep.
- Won't be made obsolete by Windows95

Call Fineware at **1-800-544-1740** to place your order!



The Zoo Example Screen

Forget double clicking, use **The Zoo's** attractive icon buttons to launch your favorite programs.



First Alert

First Alert isn't something most of you need. You don't need it **unless** you have a business and accept major credit cards such as **Visa, MasterCard, and American Express**.

Some of the best programs available today were originally written to solve a problem for the program developer himself. **First Alert** is an example of this in action. I often receive orders via fax machine and on handwritten order forms. A large percentage of these orders contain credit card account numbers that are difficult to read. A significant number of my orders come from international customers also and their writing style is different and difficult to decipher. If you've ever received a handwritten fax order where the 7s have slashes, the 9s look like a "g", the 3s and 2s are identical, and the zeros sorta look like 8s then you are the person this program was written for.

Does it authorize the charge? No, we all have our own merchant account clearing houses for this purpose, **First Alert's** job is to eliminate the wasted time and expense of calling in an account number and having it turned down because you couldn't read one of the numbers. See [Screen Shot](#)

Extreamly simple and easy to use. Simply type in the account number, press the enter key and your are immediately informed if the account numbers equal a "legal" credit card account number. This test is based on a mathematical algorythum based on a check digit value. My experience has been that most of the numbers on a particular order are fairly easy to read but there is always one or two that I've got questions about. By using the probable variations that a particular number might represent, I've managed a 100% success rate thus far on deciphering the correct account number. Best of all, it's **CHEAP! Only \$10.95 plus \$2 shipping/Handling (\$4 international).**

Oh Yes... We take Visa, MasterCard, and American Express! Call 1-800-544-1740 to place your order.

First Alert Example Screen

Just type in the number and press the button!



Diskers Information

Diskers' primary goal is to provide an easy to use tool for duplicating diskettes. It's for when the boss comes in and tells you that he needs two copies of each diskette as soon as possible and hands you a whole box to process.

Of course single diskette copies can be made using the Windows File Manager and other tools but **Diskers** is primarily designed to facilitate the creation of multiple copies because it creates an image on your hard disk of the original diskette which can then be reproduced on demand immediately or anytime later.

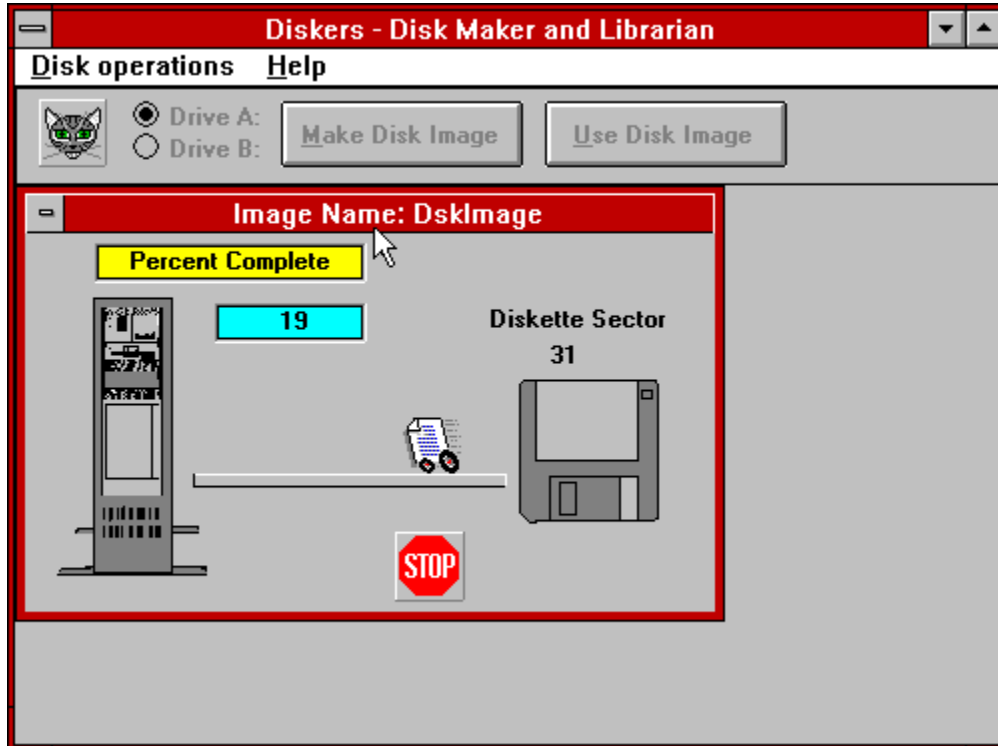
You may also find it a very valuable product for your office co-workers who don't spend very much time dealing with "computer stuff" and are uncomfortable using the Windows File Manager.

Diskers can be ordered from Fineware for \$19.95 plus \$2 shipping/handling.

Call **1-800-544-1740** to place your order today!

Diskers Screen Example

This sample screen shows an actual diskette copy in operation. During the process, the "data" image moves from diskette to computer or visa versa depending upon the operation requested.



Peeper

PEEPER is a **Multiple Document File Viewer**. This means that you can view the contents of not just one file, but as many as 9 files at the same time. See [Screen Shot](#)

View over 21 file formats including ASCII, HEX, PCX, TIF, GIF, BMP, WMF, ICON, MS Word, WordPerfect, AMI PRO, xBase, Paradox, Lotus, XL, ZIP, LZH, Quattro Pro, MetaFiles, Q&A, Windows Write, and Microsoft Works. Extract Version identification info from Windows DLLs, EXEs, and other Windows file types.

- ◆ Embedded file information can be viewed.
- ◆ Supports Windows Clipboard.
- ◆ Full Screen Display Option

The June 95 **Windows Magazine** rated it as **SUPERIOR SHAREWARE** and **CompuServe Magazine** included it with the July 95 list of **Downloadable Notables**.

Pricing Information: \$22.95 plus \$2 shipping and handling (\$4 outside US, Canada, and Mexico).

FINWARE SYSTEMS

Call Fineware at 1-800-544-1740 to place your order!

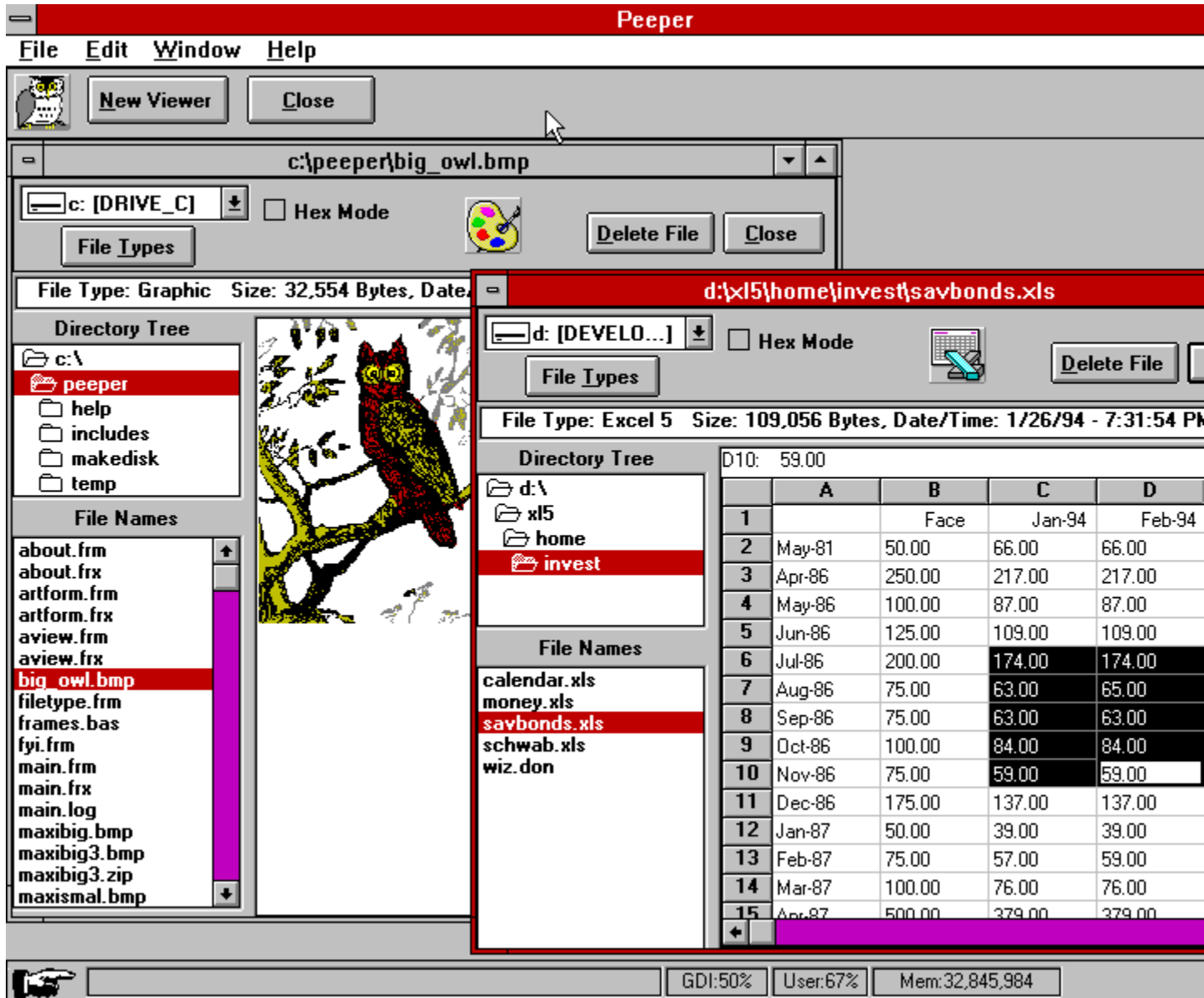
FINWARE SYSTEMS

FINWARE SYSTEMS

You may also use CompuServe's SWReg service. **PEEPER's** registration id is 3925.

Peeper Screen Example

Shown below is an example where two files are displayed at the same time. The product includes the ability to delete unwanted files as well as the ability to mark selected text or rectangular areas on graphics and copy them onto the Windows clipboard so that you can paste them into other documents.



Peeper:

\$22.95 Plus Shipping/Handling (\$2/\$4 International)

The Zoo:

\$29.95 Plus Shipping/Handling (\$2/\$4 International)

PO Box 75776
Oklahoma City, OK 73147

Orders (800) 544-1780 or (405) 947-1740
fax (405) 942-7819

Diskers:

\$19.95 Plus Shipping/Handling (\$2/\$4 International)

1st Alert:

\$10.95 Plus Shipping/Handling (\$2/\$4 International)

Glossary

A	B	C	D	E	F	G	H	I	J	K	L	M
N	O	P	Q	R	S	T	U	V	W	X	Y	Z

A

Al Meadows

E

embedded

F

Fineware Systems

H

hexadecimal

P

PsL

S

sniff out

T

top notch

V

version information

Fineware Systems

Fineware Systems

PO Box 75776

Oklahoma City, OK 73147

Al Meadows

Custom programming services available.

top notch

According to Ziff-Davis's shareware reviewer Preston Gralla.

sniff out

Basis for the program's name.

embedded

Stored within the file itself

version information

Used to identify the name, description, release, copyright and other information related to the file. This information is optional and is placed within the file by the developer of a Windows program module.

PsL

Public (software) Library

P.O. Box 35705

Houston, TX 77235-5705

hexadecimal

Numbering System using base 16. The decimal numbering system is base 10. The number 0 through 9 is equivalent in both numbering systems. At the number TEN, a base 10 system requires two positions. A base 16 system represents the base 10 numbers 10,11,12,13,14, & 15 as A,B,C,D,E & F. In Hex, the number 256 would be represented as FF.

