

FTP Commander

<http://www.internet-soft.com>

[Introduction](#)

[Starting FTP Commander](#)

[Connecting to an FTP Site](#)

[FTP server connection and program setting](#)

[Performing file operations on local computers](#)

[Performing operations on remote FTP servers](#)

[Preferences](#)

[Viewing Files and Folders on an FTP Site](#)

[Transferring a File from an FTP Site to Your PC \(Downloading\)](#)

[Transferring a File from Your PC to an FTP Site \(Uploading\)](#)

[Viewing the Log](#)

[FAQ](#)

[FTP Commander Button](#)

[Copyright and warranty disclaimer](#)

Introduction

FTP (File Transfer Protocol) was first used in Unix systems a long time ago to copy and move shared files. With the development of the Internet, FTP became widely used to upload and download online data, especially to post websites on ISP servers.

These tasks can now be performed by a special program called FTP clients.

The program lets you upload and download data or delete one or more files, including whole folders along with subdirectories. The transfer interface window shows what percentage of files has already been uploaded or downloaded. It can also automatically resume and complete file transfers, which for some reason, have been interrupted, or periodically attempt to connect with the FTP server if the previous link was unsuccessful. It also contains a passive file transfer mode. Server directories are sometimes hidden from view, which means that the directory modification option will be extremely helpful.

This program for Windows 9x/Me/XP/NT is a recognized market leader. Its user-friendly interface becomes instantaneously apparent. Smooth running instills trust in the program itself. Program settings allow you to automatically assign file transfer parameters: ascii or binary, depending on file type, which can easily be extended. All commands and control operations can be assigned using the log file. The pre-set list of public FTP sites is also very useful. If you consider yourself an "advanced user" try working in command line mode.

Other novelties

The program is error-sensitive and automatically corrects mistakes made by users. Other programs tend to use different input and setting formats to access the FTP server. FTP Navigator was designed to be smart and sensible software. It will enter the right address even if you attempt to connect using any one of the following formats.

[ftp.hostname.com](#)

[ftp://ftp.hostname.com](#)

[user@ftp.hostname.com/folder](#)

[ftp://user.password@ftp.hostname.com:port/folder](#)

[ftp://user@ftp.hostname.com:port/folder](#)

[ftp://user@ftp.hostname.com](#)

[ftp://user@ftp.hostname.com:port](#)

[http://ftp.hostname.com](#)

For example, if you make a mistake and enter a blank space in the address, the program will automatically remove it from the address, as well as any other inadmissible symbols, and will correct the address while the connection is in progress.

The program is compatible with virtually all types of servers and allows you to frame a special server response format and a rule for reading the list of server-based files and folders. The most frequent connections can be saved and subsequently entered by single-clicking the mouse. The program can save the default folders both for remote servers and local computers.

The program menu is context sensitive and will display only items which can run in the operating mode you have selected. Should you require special commands not available in the program, all you have to do is go to "custom commands", which can be saved for later use. And last but not least, you will be amazed that such a powerful program comes in such a tiny package.

Starting FTP Commander

Do one of the following:

Click the FTP Commander icon in the Windows
Choose FTP Commander from the Windows Start menu.

Start-Up

After you download the program two split window panels will appear on your screen. These two main panels can be described as follows:

- * *On the right hand panel- "Remote FTP Servers", which contains a list of pre-configured FTP servers;*
- * *On the left hand panel - "Local Computer," which contains a list of files and folders in the local computer.*

Each of these panels contains a context-sensitive menu which performs a number of system-related tasks and functions. The menu can be called up by right-clicking the mouse. The upper part of the window displays the main program menu and three keys: "Connect", "Disconnect" and "Abort Connection".

After clicking "Connect" the program will attempt to connect your computer with a computer which is on a web-based FTP server. After the command is executed and the connection is established a list of files and folder will be displayed on the remote FTP server. The keys "Disconnect" and "Abort Transfer" allow you to log off the server, break off the connection or interrupt data transfer.

To transfer files use the following menu items:
Upload the files you have selected onto the FTP server;
Download the files you have selected to the local computer;



or click on program button with arrows.

FTP server connection and program setting

When you call up "Connection" the main program menu will appear on your screen:



The first three items are used to connect with or disconnect from FTP servers. The same commands can be performed using the 3 buttons: "Connect" "Disconnect" or "Stop Transfer". After the connection is established, the "Connection" button will switch off and "Disconnect" will light up. If for some reason the connection is broken off, "Stop Transfer" will light up after which the program will give up trying to establish a connection.

The menu item " Create new session " allows you to upload a second copy of the program in another window. This will be very useful if you need to interact simultaneously with several ftp servers (transferring, deleting files, etc.).

Read the section Preferences on how to configure the program.

Performing file operations on local computers

When you call up the menu item "Local Computer" the local menu will appear on your screen. The menu shows you how to perform file operations on your local computer.

You can also select menu items by clicking the right mouse key. Find the files you need from the list of directories shown in the window "Local Computer", then click on the appropriate menu items.

To select files use the following keys (which should be pressed simultaneously, not separately):

- Shift and arrow;
- Shift and Page Up / Page down;
- Shift and left mouse key;
- Ctrl and left mouse key.

Let's now return to our description of the local menu items.

New Directory

This command allows you to create a folder in a local computer. After you enter the name the new folder will appear on the right-hand panel of your local computer.

Remove Directory

The Remove command helps you to remove folders from local computers. To do this, select the folders you want to delete, then select this option. You will be prompted as to whether or not you're sure you want to delete. If you answer yes, the folders are removed from the server. Deletions can be performed using the "Select" menu item or standard command sequences (shift, ctrl, etc.).

Rename File

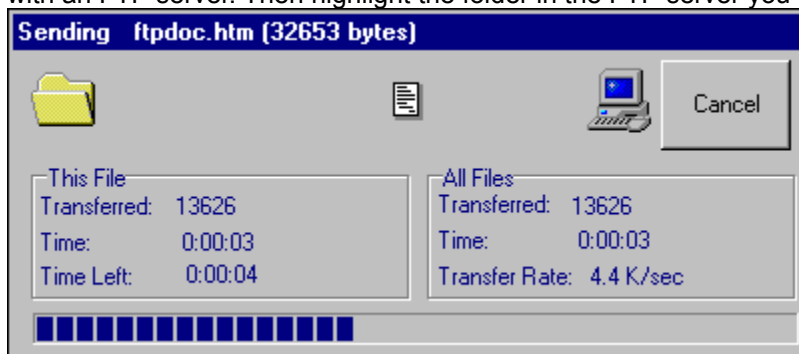
The rename command allows you to change the name of a file or folder in local computers. It works as follows:

Go into the folder and find the file you need;
Select the file you want to rename using the left mouse key;
Select the menu item "Rename";
Enter the new file name in the "Rename" window.

One file at a time can be renamed this way.

Upload selected files to an FTP server

The option "Upload selected files to FTP server" allows you to transfer files to a remote FTP server. To do this, select the files in a local computer you would like to copy. First of all you need to make a connection with an FTP server. Then highlight the folder in the FTP server you would like to upload.



The transfer interface window shows what percentage of files has already been uploaded or downloaded.

Select Files

The "Select" option allows you to highlight the files located in one or more directories for deletion, downloading to an FTP server, etc.). The following options are available: "Select all", "Unselect", "Select using filter mask" and "Invert selection".

The following files can also be used to highlight files:

Shift + arrow;

Shift + Page Up / Page Down;

Shift + Left mouse key;

Ctrl + Left mouse key.

View in text format

The file you select will be viewed in simple text editor.

Run program

Select this command on the left hand panel to launch this application (usually used for *.exe files).

Font

The last local menu item, " Font," is used to modify the size, color and properties of character types shown in a local computer window. When you choose this option the "Select font" window appear on your screen. There you can substitute one font with another, choose a different color or font properties (bond or underline) and check corrections in the "Sample" Field.

Performing operations on remote FTP servers

It should be noted that this menu is intended for operations performed in the window "Remote FTP servers", which means that many items in this menu will only be available after connecting to a remote server. File operations performed on the remote server are the same as those in local computers. We will describe in details only those items which are not discussed in the section on file operations performed in local computers.

Connection properties

Create new FTP server

This item allows you to set up and save connection configurations every time you select a new remote server profile.

After you select this option "New connection properties" will appear on your screen with empty fields which should then be filled in.

Name

Enter the name of the new server in the "name" field.

For example: microsoft

FTP server

Enter the address of the FTP server in this field.

For example: ftp.microsoft.com

Port

Give the server's FTP port here.

Usually 21.

User information should also be entered in the right hand side of the window.

User ID

Enter the user ID in this field to access a given site.

For example: anonymous

Password

A password is required whenever you access a server.

Account

This field does not have to be filled in for most servers. Skip it unless you have relevant data.

Email

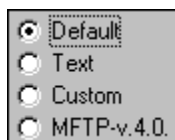
This field should be filled in for anonymous connections. In this case you should highlight "Anonymous connection".

Commentary

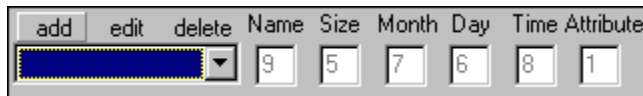
Allows you to make notes.

Server response type

Different servers have a different response structure for lists of folders and the files located inside them.



While the program is preconfigured for the vast majority of servers, there may be cases where a remote server is structured differently. You can look at these file structures by selecting "Text format". Then you need to configure the response format in "Custom" mode. The word number is given in the response.



add	edit	delete	Name	Size	Month	Day	Time	Attribute
			<div></div>	9	5	7	6	8

For example, let's assume that a word with number 9 is assigned the value "File name".

Microsoft FTP ver. 4.0 is a special configuration for Microsoft version 4.0 ftp servers.

In "Text format" you can only see the format of files on the server download files from a local computer but you will not have any local menu options for the FTP server.

For virtually all servers we recommend using the "Standard" response type.

10) Hide password

In this case someone next to your computer will not be able to see your password. This is a handy option in Internet cafes or classrooms.

11) Passive mode

Click on this option if you need to run in passive mode to access your server. This is usually necessary when you work through a proxy server. When selecting this option enter a check mark ?, and remove it when you exit passive mode.

Server properties

In this menu item you should fill in or edit the same fields that were requested when you added on a new server. Using this key, for example, you can view or change your password, or edit other fields described in the previous item.

The program is error-sensitive and automatically corrects mistakes made by users. Other programs tend to use different input and setting formats to access the FTP server. FTP Navigator was designed to be smart and sensible software. It will enter the right address even if you attempt to connect using any one of the following formats.

```
ftp.hostname.com
ftp://ftp.hostname.com
user@ftp.hostname.com/folder
ftp://user.password@ftp.hostname.com:port/folder
ftp://user@ftp.hostname.com:port/folder
ftp://user@ftp.hostname.com
ftp://user@ftp.hostname.com:port
http://ftp.hostname.com
```

For example, if you make a mistake and enter a blank space in the address, the program will automatically remove it from the address, as well as any other inadmissible symbols, and will correct the address while the connection is in progress.

Remote server operations

New directory

This option allows you to create new folders in FTP servers.

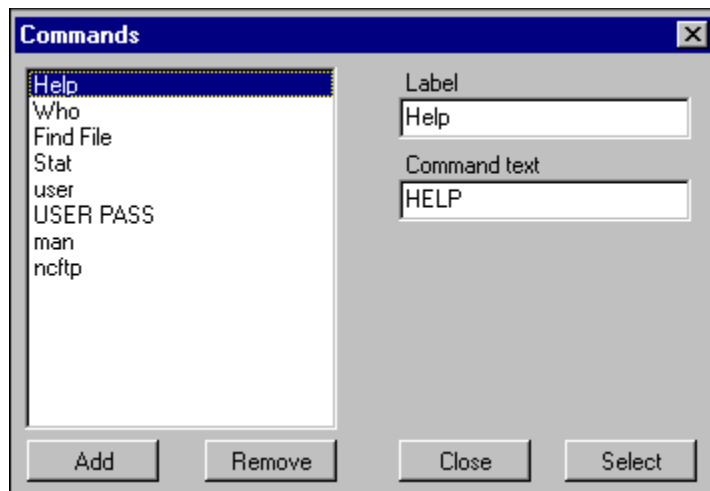
Change directory

Sometimes directories in a server can be hidden by the internet service provider or not displayed on the right hand panels of the program. For this reason the Change directory option can be a useful item.

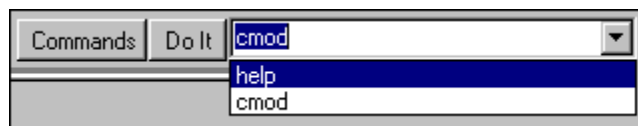
Custom commands

All program operations basically involve performing various commands on a remote server. The same commands can be given manually on the FTP server. These commands can be saved on a list of custom commands. Such a list will come in handy if your server supports custom commands not available in the program.

After selecting this menu "Commands" and "Do it (Execute)" will appear in the lower part of the Remote FTP Servers" window. By pressing the "Commands" key, the "Custom Commands" will appear in the upper left part of the window. A few basic commands are already in place. You can then add or delete as many custom commands as you like.



To add and save on commands you should first click on the "Select" button with the mouse. The command you have selected will then be displayed in the field next to the "Do it (Execute)" button. Click it to execute the operation you have selected.



After you have finished the custom command task, select the same "Custom command" menu item to remove "Commands" and "Execute" from the window panel.

Delete

This item helps you delete any unnecessary files, folders or servers. To execute this operation go into "Remote FTP Servers" and select the files, folders or servers you wish to eliminate, then press "Delete" in the local menu of the FTP server.

Rename

The Rename function allows you to rename any file or folder on an FTP server.

Download selected files to a local server

This option makes it possible for you to download the files you have selected from the remote FTP server to your own PC. Once you have established a connection with the server you can download as many directories, including subdirectories, as you wish.

Font

Here you can rearrange the size, color and properties of font in the FTP server.

About InternetSoft Corporation

<http://www.internet-soft.com>

The InternetSoft team is made up of highly skilled mathematicians, systems analysts and programmers who, having worked in a wide variety of financial institutions, have an unsurpassed depth of knowledge of the economy and its procedures.

We combine this experience with the latest technology in order to bring you the best possible tools with which to analyse and participate in the markets.

We invest heavily in market research and systems development in order to allow our developers to pro-actively respond to the needs of the marketplace and our clients in a rapidly changing environment.

Copyright, InternetSoft Corporation. 1997-2002

Preferences

Preferences allows you to assign the general settings that are to be used in running the program.

Log

The log is an option that can record all the FTP commands you perform. To activate the log, click on the check mark in the field "Enable log", then enter the name of the file where you would like to save the log.

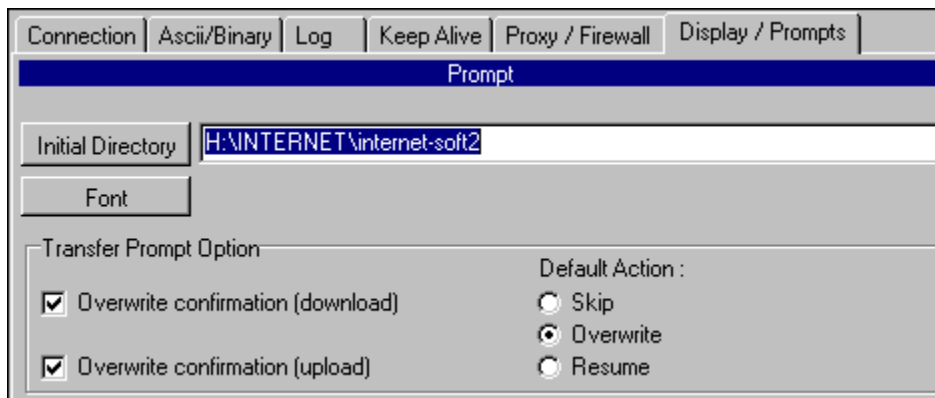
Proxy, Sockets and Firewall configurations

If you have to work on large corporate networks these configurations may be required. To set them up fill in the fields to the left of the type you have selected: then enter the description of the server ("Server"), the port you will be using ("Port") and the "Password" you will be using. To enter the password in hidden format, click "Masked Password".

By selecting "Direct" you will get a direct connection and no other fields will have to be filled in, as default values are applied.

Program configurations and interface

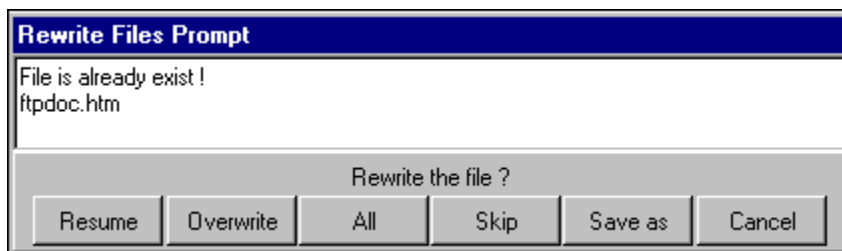
Program configurations appear of the "Interface" page. This item allows you to configure the "Initial directory" when you download the program, and chose the "Font" you want to use in the program.



Default confirmation: this is useful when you're interacting with a server on which you upload or download information.

For example, if you check the box "Overwrite confirmation - Download", every time you perform a download operation you will be queried about whether you wish to proceed or not.

"Overwrite confirmation - Upload" also asks you to confirm uploads from your server to the server. If you don't want to give confirmation every time, then all you have to do is make a default confirmation setting. The program will execute by default any command selected in the fields "Skip", "Overwrite" or "Resume".



After you have entered all the appropriate properties and filled in all the requisite fields, you can either

save these configurations by pressing the "Save" button or discard them by pressing "Cancel".

FAQ

Problems Connecting to an FTP Site

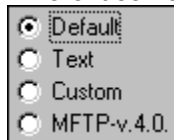
Problem: I cannot connect to an FTP site.

Solution:

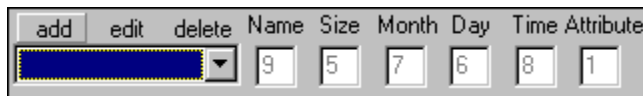
1) Make sure you are using [a valid login name and password](#). Otherwise, try selecting the Anonymous check box in the Site Properties; or, contact the administrator of the FTP site to which you are trying to connect.

2) Try to change [Server response type](#).

Different servers have a different response structure for lists of folders and the files located inside them.



While the program is preconfigured for the vast majority of servers, there may be cases where a remote server is structured differently. You can look at these file structures by selecting "Text format". Then you need to configure the response format in "Custom" mode. The word number is given in the response.



For example, let's assume that a word with number 9 is assigned the value "File name".

Microsoft FTP ver. 4.0 is a special configuration for Microsoft version 4.0 ftp servers.

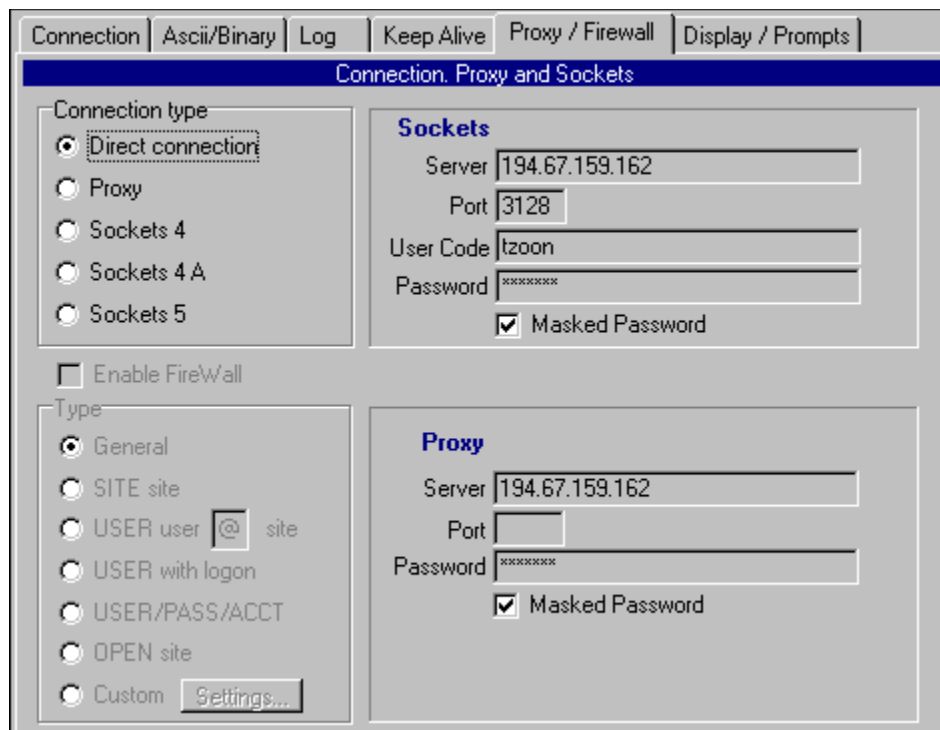
In "Text format" you can only see the format of files on the server download files from a local computer but you will not have any local menu options for the FTP server.

For virtually all servers we recommend using the "Standard" response type.

3) Try to change [transfer mode](#) (passive / active).

Click on this option if you need to run in passive mode to access your server. This is usually necessary when you work through a proxy server. When selecting this option enter a check mark ?, and remove in when you exit passive mode.

4) If you have to work on [corporate networks](#) or use [DSL connection](#) then a proxy server configuration may be required. To set them up fill in the fields (Preferences menu item) to the left of the type you have selected: then enter the description of the proxy server ("Server"), the port you will be using ("Port") and the "Password" you will be using. To enter the password in hidden format, click "Masked Password".



By selecting "Direct" you will get a direct connection and no other fields will have to be filled in, as default values are applied.

Problem: My connection closes after n minutes of inactivity.

Solution: The FTP server determines the connection timeout, and most FTP servers close the connection after a few minutes of inactivity. This setting can be changed only by the FTP site administrator, not from FTP Commander.

Problem: FTP Commander can only connect to sites using the IP address, for example, 115.255.255.3.

Solution: Configure the DNS (Domain Name Server) in your stack. Talk to your network administrator or your Internet provider for the proper values for DNS.

Problems Transferring Files

Problem: I cannot open a folder on the FTP site or transfer a file.

Solution: Check your file and folder access permissions on the FTP site. These permissions may only be set by the FTP site administrator; they cannot be changed by FTP Commander.

Problems Renaming and Deleting Files

Problem: I can't rename a file on an FTP server.

Solution: You may not have renaming privileges on the server.

Problem: I can't rename a file on an FTP server, even though I have renaming privileges.

Solution: You may be trying to use a long name on an FTP server that doesn't allow long names. Try a name of eight characters or less.

Problem: I can't delete a file from an FTP site.

Solution: You may not have deletion privileges on the FTP site.

FTP Commander Buttons:

Connect

Use connect button to connect to FTP Site.

- 1) Enter FTP Server Name (for example: ftp.microsoft.com)
- 2) Enter Username (for example: anonymous)
- 3) Enter Password (for example: your Email)

Disconnect

Use this command to disconnect from the current FTP Site.

Stop transfer

Use this command to interrupt current file transfer for connected FTP Site.

FTP Commander Buttons:

New Directory

It allows you to create a folder inside the selected folder.

Remove Directory

The Remove command allows you to remove folders from the FTP Server. To use, select the folders you want to delete, then select this option. You will be prompted as to whether or not you're sure you want to delete. If you answer yes, the folders are removed from the server. This command is an easy way to remove lots of data from an FTP server, so use with care.

Delete File

The delete command allows you to remove files from the FTP Server. To use, select the files you want to delete, then select this option. You will be prompted as to whether or not you're sure you want to delete. If you answer yes, the files are removed from the server.

Rename File

The rename command allows you to change the name of a file. This option is available only when a file is selected. When selected, this option creates an edit box around the selection allowing the name to be changed.

> Upload

Use this option to upload (put or send) the selected files in the local window to the current folder on the remote server. After uploading, the files will appear in the remote list.

< Download

Use this option to download (get or receive) the selected files in the remote window to the current folder on your computer. After downloading, the downloaded files will appear in the local list.

Viewing Files and Folders on an FTP Site

Use the standard Windows techniques for locating and viewing files and folders. Look for a file called readme, readme.txt, index, or 00index to get a description of the available files, as well as other site information.

You will usually want to try the pub folder.

Transferring a File from an FTP Site to Your PC (Downloading)

To use the default transfer mode and the original file name:

- Connect to the FTP site where the file is located, then locate and select the file to download.
- Press download button

Transferring a File from Your PC to an FTP Site (Uploading)

- 1 Connect to the FTP site to which you want to upload a file, then locate the desired destination folder.
 - 2 Select the folder on the FTP site to which you want to upload the file.
- Press Upload Button:

Deleting a File

You can delete a file from an FTP site if you have permission to delete files from that site.

- 1 Select the file.
- 2 Select **Delete** Button.

Renaming a File on an FTP Site

You can rename a file on an FTP site if you have permission to do so on that site.

- 1 Select the file.
- 2 Select **Rename** Button.
- 3 Enter the new name.

Viewing the Log

FTP Commander can keep a log to help you determine what's going on between the FTP servers and your PC. The log keeps track of all file transfers, showing the date, time, source, and destination.

Troubleshooting

Problems Connecting to an FTP Site

Problems Transferring Files

Problems Renaming and Deleting Files

Problems Connecting to an FTP Site

Problem: I cannot connect to an FTP site.

Solution: Make sure you have an active dial-up or direct Internet connection. FTP Navigator is not a dialer; it calls the Winsock DLL and uses the dialer or direct connection specified there.

- Make sure your modem is set to hardware flow control if you are using a SLIP or PPP connection.
- If you get a "Can't open file for write" message from Windows, exit to DOS, enter SET and make the folders specified by your TMP and TEMP environment variables.

Problem: I cannot log on to an FTP site.

Solution: Make sure you are using a valid login name and password. Otherwise, try selecting the Anonymous check box in the Site Properties; or, contact the administrator of the FTP site to which you are trying to connect.

Problem: My connection closes after n minutes of inactivity.

Solution: The FTP server determines the connection timeout, and most FTP servers close the connection after a few minutes of inactivity. This setting can be changed only by the FTP site administrator, not from FTP Commander.

Problem: FTP Navigator can only connect to sites using the IP address, for example, 125.255.255.1.

Solution: Configure the DNS (Domain Name Server) in your stack. Talk to your network administrator or your Internet provider for the proper values for DNS.

Problem: FTP Navigator doesn't work with my AOL connection.

Solution: Older versions of AOL use a 16-bit TCP/IP stack that will not work with 32-bit TCP/IP applications. For more information on AOL's Winsock support, see the FTP section in your AOL application.

Problems Transferring Files

Problem: I cannot open a folder on the FTP site or transfer a file.

Solution: Check your file and folder access permissions on the FTP site. These permissions may only be set by the FTP site administrator; they cannot be changed by FTP Commander.

Problems Renaming and Deleting Files

Problem: I can't rename a file on an FTP server.

Solution: You may not have renaming privileges on the server.

Problem: I can't rename a file on an FTP server, even though I have renaming privileges.

Solution: You may be trying to use a long name on an FTP server that doesn't allow long names. Try a name of eight characters or less.

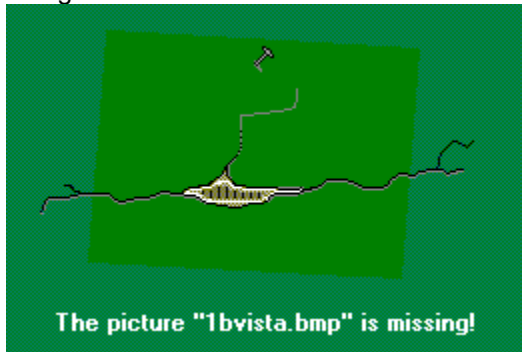
Problem: I can't delete a file from an FTP site.

Solution: You may not have deletion privileges on the FTP site.

Copyright and warranty disclaimer.

Copyright, InternetSoft Corporation, 1997 - 2002

All rights reserved.



[Registration](#)

<http://www.internet-soft.com>

Email: vista@internet-soft.com

WARRANTY DISCLAIMER

THE SOFTWARE IS PROVIDED AS IS WITHOUT WARRANTY OF ANY KIND. TO THE MAXIMUM EXTENT PERMITTED BY APPLICABLE LAW, VISTA, FURTHER DISCLAIMS ALL WARRANTIES, INCLUDING WITHOUT LIMITATION ANY IMPLIED WARRANTIES OF MERCHANTABILITY, FITNESS FOR A PARTICULAR PURPOSE, AND NONINFRINGEMENT. THE ENTIRE RISK ARISING OUT OF THE USE OR PERFORMANCE OF THE PRODUCT AND DOCUMENTATION REMAINS WITH RECIPIENT. TO THE MAXIMUM EXTENT PERMITTED BY APPLICABLE LAW, IN NO EVENT SHALL VISTA BE LIABLE FOR ANY CONSEQUENTIAL, INCIDENTAL, DIRECT, INDIRECT, SPECIAL, PUNITIVE, OR OTHER DAMAGES WHATSOEVER (INCLUDING, WITHOUT LIMITATION, DAMAGES FOR LOSS OF BUSINESS PROFITS, BUSINESS INTERRUPTION, LOSS OF BUSINESS INFORMATION, OR OTHER PECUNIARY LOSS) ARISING OUT OF THIS AGREEMENT OR THE USE OF OR INABILITY TO USE THE PRODUCT, EVEN IF HAS BEEN ADVISED OF THE POSSIBILITY OF SUCH DAMAGES.

Registration

FTP Commander is *freeware*.

If you liked our program please make the reference to our website:

<http://www.internet-soft.com>

Please check our web site (<http://www.internet-soft.com>) occasionally for updates.

FTP Commander is copyright InternetSoft Corporation. 1997-2002

Email: vista@internet-soft.com

Connecting to an FTP Site

Use connect button to connect to FTP Site.

FTP Commander connects to the FTP site and displays its contents.

.

