

Contents

ComponentSource is a huge collection of software components, companion products and add-ons aimed at software developers. You can use this CD to freely access demonstrations and evaluations, complete help files and technical specifications of hundreds of products.

In addition to trying them, you can also buy and unlock the full retail products instantly from the CD. Each ComponentSource CD allows you to browse the contents of previous CDs and therefore access an ever growing interactive library of products. To ensure you have a complete library of products, it is essential you register your name with ComponentSource.

The following Help Topics are available:

[Welcome to ComponentSource](#)

[Why you should register](#)

Using the CD

[Trying and buying components from the CD](#)

[The Main Screen](#)

[The Shopping List](#)

For sales and information contact ComponentSource at:-

ComponentSource
27-37 Vachel Road
Reading
Berkshire
RG1 1NY
United Kingdom

Email: 101320.2624@compuserve.com
Web Site: <http://www.componentsource.com>

Telephone : +44 (0) 118 958 1111
Facsimile : +44 (0) 118 958 9999

France : 0800 90 92 62
Germany : 0130 86 07 06
Italy : 1677 90046
Sweden : 020 794 989
The Netherlands : 06 022 8832
United Kingdom : 0800 581111

Welcome to ComponentSource

Welcome to ComponentSource the World's largest collection of software components, companion products and add-ons for developers.

Each CD allows you to thoroughly evaluate hundreds of products by giving you access to freely available demonstrations and evaluations, complete help files and technical specifications. Once satisfied with your product choice, you can buy and unlock the full retail product directly from the CD. There are no software shipping charges, delivery is instant and we guarantee competitive prices.

Use the ComponentSource menu options to select your components or products, browse through product literature and technical descriptions at your leisure. Try demonstrations and evaluations, then just double click the purchase option to add to your own 'shopping list'.

Competitive Prices - GUARANTEED

Once you have reviewed and selected the products you would like, simply call the ComponentSource hot-line on:

Telephone : +44 (0) 118 958 1111
Facsimile : +44 (0) 118 958 9999

France : 0800 90 92 62
Germany : 0130 86 07 06
Italy : 1677 90046
Sweden : 020 794 989
The Netherlands : 06 022 8832
United Kingdom : 0800 581111

In exchange for payment details, ComponentSource will provide you with an authorisation code that will enable you to download the complete retail product straight from the CD. There are no software shipping charges, delivery is instant and we guarantee competitive prices. Each product you select has a price guide to help you. For the latest available prices call your local sales hot-line number.

Don't forget to register now to ensure you get all future ComponentSource CDs. You can register today using this CD. (See "[Why you should register](#)" for more information.)

Thank you for using ComponentSource.

Why you should register

ComponentSource is an on-going interactive library. Each new ComponentSource CD adds to the content of the previous CDs, allowing developers to always browse the entire range of ComponentSource products. This can only happen if the latest ComponentSource CD is always installed and of course, if a developer has registered to receive all new CDs.

It is essential that developers requiring access to the latest and complete range of ComponentSource CDs register FREE with ComponentSource in ONE of the following ways:

1. Visit our web site: <http://www.componentsource.com>

2. Telephone our express registration service:

Telephone : +44 (0) 118 958 1111

France : 0800 90 92 62

Germany : 0130 86 07 06

Italy : 1677 90046

Sweden : 020 794 989

The Netherlands : 06 022 8832

United Kingdom : 0800 581111

3. Post us your details. We need your name, full address, telephone and fax number, and e-mail address:

Write to:-

ComponentSource
27-37 Vachel Road
Reading
Berkshire
RG1 1NY
United Kingdom

Email: 101320.2624@compuserve.com

Web Site: <http://www.componentsource.com>

Trying and buying components from this CD

Overview

ComponentSource enables developers to rapidly view, select and instantly buy a large range of software components and companion products. It has been designed for professionals who need to be continually updated on the latest available products, see working demonstrations, get products quickly and who demand the lowest available prices.

Trying and buying components from the CD

From the main ComponentSource window, use the outline view in the left pane to select a product, (products can be viewed by, for example, vendor or product name order or business category), then, from the centre right pane double-click one of the available icons to, for example, either view product information, or see a working product demonstration.

In the bottom right pane the price for the selected product is simultaneously displayed. Double-click on the price, to add the product to your 'shopping list', ready for purchase. (**Call our sales office for the latest available price**).

Note: Items can only be purchased if the software licence terms and conditions are agreed.

It is important to know that the browser can show you products available on a selection of ComponentSource CDs, or all of them. If you request to buy or run a demo of a product which is not on the CD present in your CD ROM drive, then you will be prompted to insert the CD which contains the product. If you do not have it, please telephone ComponentSource on:
+44 (0) 118 958 1111 (see below for your local ComponentSource number) and a copy will be sent immediately.

How to unlock products from the CD

Once you have finished selecting products, choose 'Shopping List' from the drop down menu and select the '[Show Options](#)'. A list of selected products is now revealed giving details of the products ordered so far. A total price is displayed in the bottom right hand corner. To buy selected components, click on the '[Buy Now](#)' button in the bottom left of the window. A further drop down window is then displayed, follow steps 1-5 and click on the 'Authorise' button. Having called the ComponentSource sales office on one of the numbers below, follow the verbal instructions issued by the sales representative to complete the purchase.

For sales and further information:

Telephone : +44 (0) 118 958 1111

France : 0800 90 92 62

Germany : 0130 86 07 06

Italy : 1677 90046

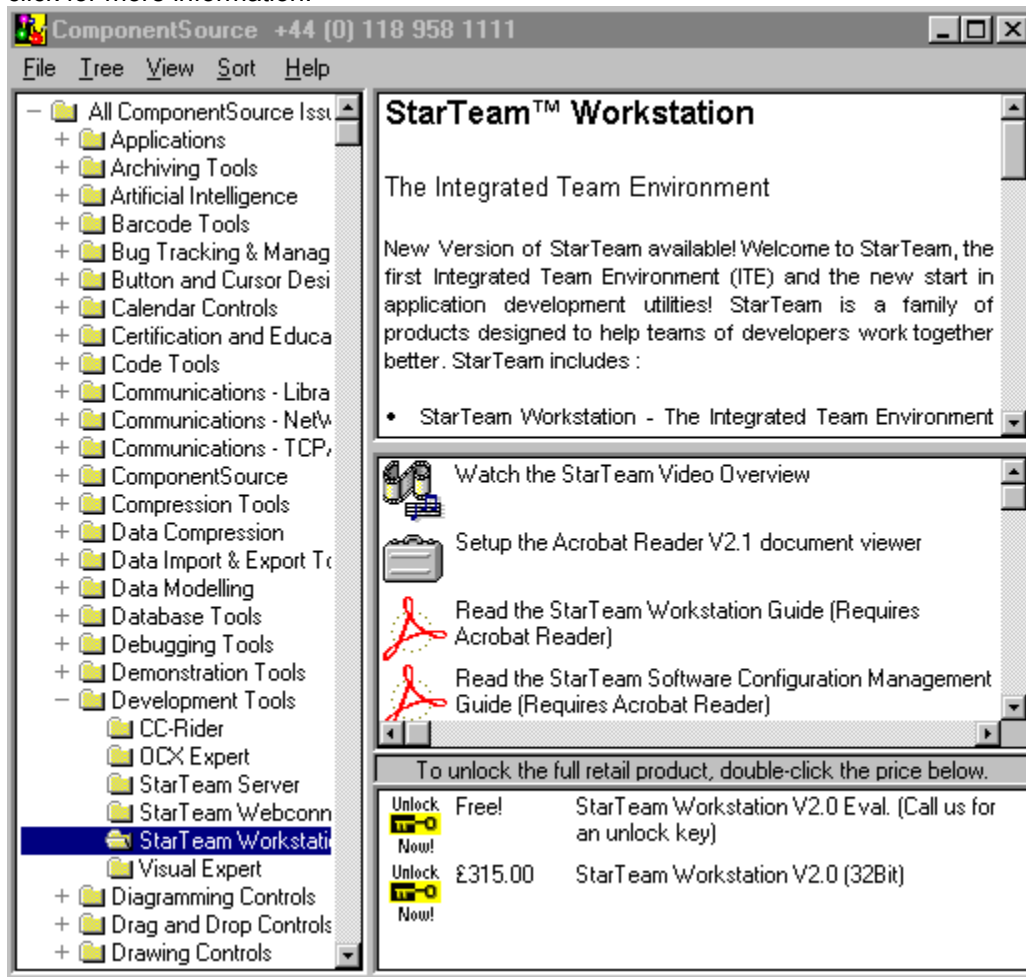
Sweden : 020 794 989

The Netherlands : 06 022 8832

United Kingdom : 0800 581111

The CD Main Screen

Move the mouse to an area on the screen that you would like help on. When the pointer turns into a hand, click for more information.



Outline Pane

This pane which occupies the whole left side of the screen, gives a structural view of the products available from ComponentSource.

The outline always has three possible indent levels :-

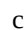
- The top level represents the complete set of products available from ComponentSource. This is the root of the outline.
- The items in the centre level represent groups of components or tools which have been logically collected together to simplify the task of finding suitable products. The type of grouping in effect may be changed by selecting the Sort facility from the [Options](#) menu.
- The third level represents individual products which may be purchased from ComponentSource.

The indent level of the item currently selected in the outline affects the contents of the three panes on the right hand side of the screen.

- The top right pane displays a description of the item selected in the outline pane, whether the item is an issue of the CD, a product grouping or a product.
- The centre pane will display a list of items at the indent level below the one selected in the outline pane.
- The lower right pane displays buying options and prices whenever the selected item in the outline is a product.


The outline functions much like File Manager in Windows 3.1 or Explorer in Windows 95. Items may be selected using the mouse or the keyboard.

- Single clicking an item will cause its contents to be displayed in the centre right pane.
- Double-clicking will cause contents to be displayed in the centre right pane whilst also expanding any children belonging to the item selected.
- Items with a plus or minus have subordinate tree entries. A plus indicates that its children are not visible and a minus means that children are visible. Clicking the plus or minus will cause their state to be inverted. If the current item is hidden because its parents minus sign is clicked then the current item will become the parent.
Clicking the plus sign alone will not cause the currently selected item to change.
- Keyboard navigation is achieved through the use of the '+' and '-' signs to expand and collapse children and arrow keys to move up and down the outline.
- The entire outline can be expanded or collapsed through the "Expand all" and "Collapse all" entries on the [options menu](#).

To increase the width of the Outline Pane, position the cursor over the central vertical bar until the vertical sizing cursor  appears and then press and hold the left mouse button and drag right. Release the mouse when the sizing bar is at the required position.

Description Pane

The description pane gives you information about the item currently selected in the [Outline pane](#). The context of the description depends upon the indent level of the selected item in the Outline pane.

To increase the height of the Description Pane, position the cursor over the upper of the two horizontal bars until the horizontal sizing cursor  appears and then press and hold the left mouse button and drag downwards. Release the mouse when the sizing bar is at the required position.

Note that dropping the horizontal size bar near to another size bar or the edge of the window will result in the pane disappearing completely. When you select another product the pane will reappear

Item Pane

The information displayed in the items pane (centre-right of the main screen) represents children of the item currently selected in the [Outline pane](#).

- When the item selected in the outline is at the top level (i.e. the CD edition), the items pane shows the titles of the various product groupings
- When the item selected in the outline is at the second level (i.e. a product group heading), the items pane displays the names of products in that group.
- When the item selected in the outline is at the third (lowest) level (i.e. a product name), the item pane displays the various demonstration programs and information files which you can use to explore the product.
- If there is no information to show in this pane it will automatically be hidden from view to give more space to the other panes.

It is possible to select items by double-clicking in the items pane and changes made in this way are reflected in the outline pane.

When the items displayed are product groupings or product names, a folder icon  is displayed to the left of the title.

Once a product name is selected then the items pane displays a variety of different icons representing the different types of information available that relate to the product. Double-clicking these will cause the associated action to be performed. The icons have the following meanings:-



AVI Multimedia file played via the Media Player



Executable demo file. This icon will only appear if a demo does not have one of its own.



Windows help file will be opened via WinHelp.EXE.



HTML web page. Displayed via the Microsoft internet explorer, I-Explore, which is provided free on the ComponentSource CD.



Text file opened using Notepad.




Word document to opened by Microsoft WordView which is provided free on the ComponentSource CD.



Write document opened by Microsoft Write.



Visual Basic Project Source (MAK or VBP). These require Visual Basic to be present and include sample source code to help you understand how a component is employed.

To increase the height of the Items pane, position the cursor over the lower of the two horizontal bars until the horizontal sizing cursor  appears and then press and hold the left mouse button and drag upwards. Release the mouse when the sizing bar is at the required position.


Note that dropping the horizontal size bar near to another size bar or the edge of the window will result in the pane disappearing completely. When you select another product the pane will reappear

Price Pane

The bottom right hand pane on the screen is used to display purchase options. These are the different configurations of a product that you may buy from the CD. If you see a product with “Free!” displayed next to it, then simply double-clicking it will start downloading the software in question. Double-clicking non-free items will cause them to be added to the “Shopping List”.

You can view the shopping list by selecting “Show” from the [Shopping List Menu](#).

If there is no information to show in this pane it will automatically be hidden from view to give more space to the other panes.

To increase the size of the Prices pane, position the cursor over the lower of the two horizontal bars until the horizontal sizing cursor  appears and then press and hold the left mouse button and drag upwards. Release the mouse when the sizing bar is at the required position.

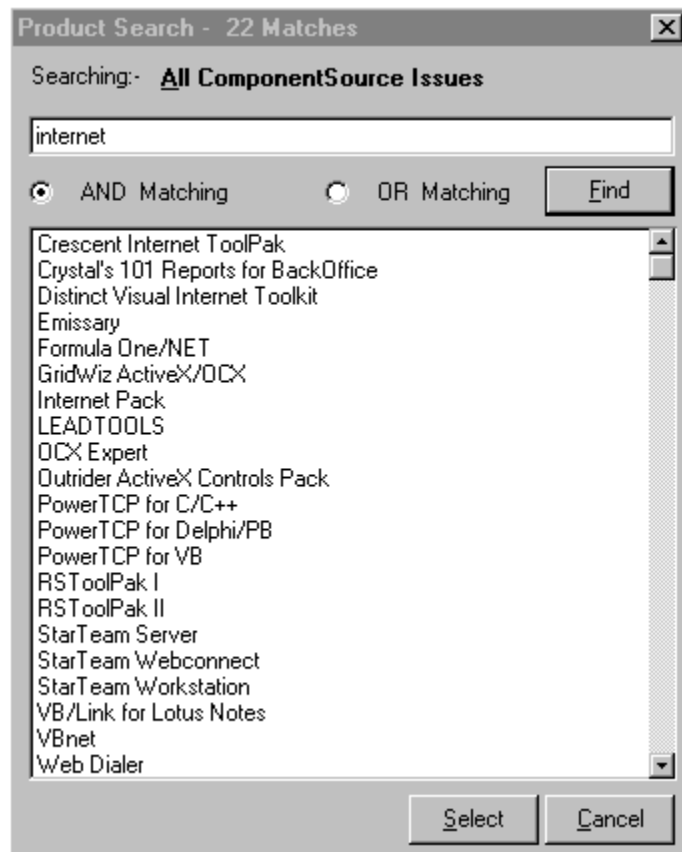
Main Menu Options

The following options are presented on the pull down menu bar or the main screen.

Menu	Options	
File	<i>Save Settings on Exit</i>	Causes screen size etc to be saved between sessions
	<i>Exit</i>	Finish your session on the ComponentSource CD.
Tree	<u><i>Find</i></u>	Displays the Product Search screen which allows you to locate products using keyword searching.
	<i>Expand All</i>	Will force all children in the outline pane to be displayed.
	<i>Collapse All</i>	Will hide all bottom level (product name) children.
View	<i>Shopping List</i>	Will make the shopping list visible/invisible.
	<i>Contents of</i>	List of available disks. This option allows you to restrict the products displayed to those present on various CDs.
	<i>Update which CDs you have</i>	Update the list of CDs that you have collected from ComponentSource and Microsoft.
Sort	<i>Various Sort Criteria</i>	Change the way products are grouped together. E.G. by Vendor or Business Category or Product Name.
Help		Provides access to the help system.

Product Search

This sample shows the Product Search screen which can be activated by selecting “Find” from the [main menu](#)



The above example show a search using a phrase and a word with AND matching selected and the resultant products displayed beneath.


When searching for a product, enter keywords which associate with the type of product required. For example if you wanted to find grid controls you could enter the keyword “grid”. To widen the search, add extra keywords and then select OR matching. For example by using the keywords “grid” and “spreadsheet” with OR matching the number of records returned may be increased. To narrow the search, add extra keywords and select AND matching. For example to return only data bound grid controls you might provide the keywords “grid” and “datacontrol” and select AND matching.

You may search for phrases by enclosing them in quotes (“a phrase to find“).

If your search is successful the results will be returned to the table where a single entry may be selected by double clicking that entry or clicking and then pressing the “Select” button.

The Shopping List

Move the mouse to an area on the screen that you would Like help on. When the pointer turns into a hand, click for more information.

 Shopping List +44 (0) 118 958 1111

Options

To licence these products on more than one machine, please alter the quantity.

	Part No	Description	Cost	Qty	Total
▶	00013902	ClassAssist	£175.00	1	£175.00
	00039912	MetaDraw V1.0 (DCX)	£170.00	1	£170.00
	00053702	FaxMan V1.08 (VBX/DCX 16 & 32 Bit) + 50	£330.00	1	£330.00

Click 'Buy Now' to unlock these products from the CD.

Change Path...

	Free:	Required:
C:\CS	70.22Mb	3.72Mb
C:\WINDOWS\TEMP\	70.22Mb	2.33Mb

Sub Total:

£675.00

Shipping:

£0.00

VAT 17.5%

£118.12

Total:

£793.13

Buy Now...

Order Items List

Whenever you double-click an item in the [Price pane](#) it is added to the order item list. This displays the information that you will need when buying products from ComponentSource. The order item list is read-only apart from the quantity field which may be set to the number of product licences that you require.

The order item list contains a “Part” column which should be given to the ComponentSource sales representative to identify the product that you require.

The “Total” column is the product of “Price” and “Qty” (quantity). Beneath the order item list, on the right, is the Sub-total (all the totals added together), the VAT amount payable and the Total (including VAT).

Download Path Pane

Located beneath the [order items list](#), the download path pane provides information about where products will be downloaded to and how much space they will require on the selected drive and the TEMP directory. Also displayed is the amount of free space available on these drives.

Once you have called ComponentSource and purchased a product, this is where the installation kits are to be found. From here you can copy all of the created “disks” onto floppy for your own security or backup purposes. To install the product follow the installation instructions provided.

To change the download path, click the “Change Path...” button which is located on the bottom line of the pane.

The temporary directory is used by ComponentSource to hold working files whilst downloading to disk. The temporary path cannot be changed from within the browser but can be altered by setting the environment variable “TEMP” in your AUTOEXEC.BAT file which is run when your computer starts up.

You cannot proceed with the purchase process until there is enough free space on the selected drive and the temporary path.

Buy Now

When the Shopping List is first displayed, it will only show the [order items pane](#) , the [download path pane](#) and the “Buy Now” button. When you have selected the items that you are going to buy, press the “Buy Now” button and the rest of the screen containing instructions and information required by ComponentSource is displayed.

Follow the instructions provided and you will be guided through the procedure for obtaining and entering unlock keys for the products that you require.

If you want to reduce the Shopping List to its original size then click the “Buy Later” button.

Shopping List Option Menu

The following options are available:-

<i>Always on Top</i>	Ensures that the shopping list is never obscured by other windows.
<i>Remove Item</i>	Removes the current item (indicated by a highlight bar) from the Order items list .
<i>Unlock Errors</i>	Lists any problems that may have occurred during the download process. This should be quoted to

