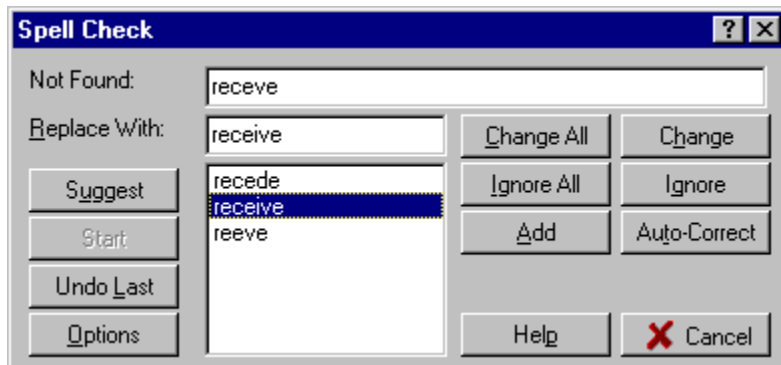


## Spell Check



First of all, you may click on any part of the picture to the right for context sensitive help.

The spell check dialog provides many useful options for easily locating misspelled words and correcting them. Many different configuration options are also available (see [Spell Check Configuration](#) for more details).

The [Change All](#) button will replace all occurrences of the misspelled word with the word in the "Replace With:" edit field, while the [Change](#) button replaces only the current occurrence of the misspelled word.

The [Ignore All](#) button will ignore the word thought to be misspelled throughout the rest of the spell check, while the [Ignore](#) button will only ignore the current occurrence.

The [Add](#) button adds the word in the "Not Found:" edit field to the user dictionary specified in the [Configuration](#).

The [Auto-Correct](#) button adds the words in the "Not Found" edit field and the "Replace With" edit field to the current user dictionary (specified in the [Configuration](#)) as an auto-correct pair. Any future occurrence of the presumed misspelled word will then be replaced with the correct spelling automatically. This is useful for common spelling mistakes, such as recieve:receive and teh:the.

The [Suggest](#) button will, if possible, add additional word alternatives to the suggestions list.

The [Start](#) button is used to restart a spell check session from the current cursor position if the spell check window lost focus in favor of another window in the current application. This gives freedom of movement, allowing you to edit the document being checked without ending the current spell check session.

The [Undo Last](#) button restores the last spell check action performed and reselects the previous misspelled word (if possible). This button can be pressed multiple times to undo multiple operations.

The [Options](#) button shows a window allowing you to set [spell check configuration](#) options

## Spell Check Configuration (Dictionaries)

This tab of the configuration window controls which main dictionaries and user dictionaries are active during the spell check. See the [options tab](#) for more configuration options.

In both the main and user dictionary lists the checkbox to the left of the item indicates whether or not a specific dictionary is active. To change the active status, simply click on this checkbox.

To add an already existing dictionary to the list, click on the [Add](#) button. When adding a preexisting user dictionary, Microsoft Word user dictionaries (.DIC file extension) may also be used. To delete a dictionary already in the list, click on the [Remove](#) button.

To form a new user dictionary, click on the [New](#) button.

The "Add Words To" selection box lets you specify which user dictionary new words and auto-corrections are to be added to. This must be an active user dictionary (and not a Microsoft Word user dictionary).

The [OK](#) button saves the current configuration and closes the configuration window.

The [Cancel](#) button aborts any changes made to the configuration and closes the configuration window.

*See Also:*

[Configuration Options](#)

## Spell Check Configuration (Options)

This tab of the configuration window controls specific configuration options related to the spell check. See the [dictionaries tab](#) for more configuration options.

### **Ignore Options:**

The "[Words in UPPERCASE](#)" checkbox, when checked, forces the spelling checker to skip any words completely in uppercase. This can be useful for ignoring abbreviations.

The "[Words Containing Numbers](#)" checkbox, when checked, forces the spelling checker to skip any words that may contain one or more numeric characters. This can be useful for ignoring license plates and other partially numeric words. This can also be somewhat detrimental if a numeric key was pressed instead of a character by mistake.

The "[HTML Tags](#)" checkbox, when checked, forces the spelling checker to skip any HTML tags encountered (i.e. text between opening and closing angle brackets).

The "[URLs and E-mail Addresses](#)" checkbox, when checked, forces the spelling checker to skip any e-mail addresses or world wide web addresses found in the document.

The [Reset Ignore All](#) button removes any words previously added to the "Ignore All" list. Words previously in the list will no longer be ignored when encountered.

The [Reset Change All](#) button removes any word sequences added to the "Change All" list. Words matching added to the "Change All" list will no longer be automatically replaced.

### **Suggest Options:**

The "[Generate Automatically](#)" checkbox, when checked, forces the spelling checker to make suggestions for replacement of a word as soon as a misspelled word is located. If this option is not checked, no suggestions are given initially.

The "[From Primary Dictionary Only](#)" checkbox, when checked, forces all suggestions to be constructed from the primary dictionary only. If the option is not checked, then suggestions are generated from each main dictionary. The primary dictionary is the first dictionary in the [main dictionaries list](#)

### **General Options:**

The "[Re-check Replaced Words](#)" checkbox, when checked, forces the spell checker to re-check words that it has replaced as a result of a change or change all operation. This is a useful feature to counteract the occasional spelling mistake that may occur when typing a corrected word.

The [OK](#) button saves the current configuration and closes the configuration window.

The [Cancel](#) button aborts any changes made to the configuration and closes the configuration window.

*See Also:*

[Dictionary Options](#)

## **Word Not Found**

This field simply displays the word that is currently thought to be misspelled.

## **Replace With Word**

This edit field contains the word that the misspelled word is to be replaced with. To change this field, simply click on a word suggestion in the suggestions list, or edit the field directly.

## **Suggestions List**

This list generally contains several correctly spelled words each thought to be a possible replacement for the misspelled word. To select a word for replacement, simply click on that word. Double clicking on a word will replace the current and all future instances of the misspelled word with the suggestion clicked upon (Change All).

## **Suggest Button**

If suggestions are not generated automatically (a configuration option), then pressing this button initially will add suggestions for the misspelled word to the suggestions list. From this point, the suggest button will generate more suggestions for the currently selected word in the suggestions list.

## **Start Button**

This button is used to restart a spell check session from the current cursor position of the document being checked if the spell check window lost focus in favor of another window in the current application. This gives freedom of movement, allowing editing of the document being checked without ending the current spell-check session.



## **Undo Last Button**

This button will restore the last spell check action performed and reselect the previous misspelled word (if possible). This button can be pressed multiple times to undo multiple operations.

## **Options Button**

This button will show a window allowing you to set which main and user dictionaries are active, as well as several other configuration options.

## **Change All Button**

This button replaces the current and all successive instances of the misspelled word with the word in the "Replace With" edit field.

## **Change Button**

The button replaces only the current instance of the misspelled word with the word in the "Replace With" edit field. Any successive instances of the misspelled word will not be replaced.

## **Ignore All Button**

This button will force the spell checker to ignore all future instances of the misspelled word in the current spell check session. Future sessions will not ignore the word.

## **Ignore Button**

This button will force the spell checker to ignore the current instance of the misspelled word. Future instances will not be ignored.

## **Add Button**

This button adds the word thought to be misspelled to the currently active user dictionary (specified in the configuration). Any future occurrences of the word will be ignored, provided the user dictionary it was added to is active.

## **Auto-Correct Button**

This button adds an auto-correction pair to the active user dictionary (specified in the configuration). This will force the current and any future occurrence of the misspelled word to be replaced with the word specified.



## **Cancel Button**

This button closes the spell check window and ends the current spell check session.

## **Up and Down Buttons**

These buttons move the selected main dictionary up and down in the main dictionary list. This is important for several reasons. The main dictionary that is first in the list is considered the primary dictionary. The order of dictionaries in the list is also the order which they are searched, so the most frequently used language should be first in the list.

## **Main Dictionary List**

This list shows the main dictionaries that are known to the system. The checkbox to the left of the item indicates whether or not a specific dictionary is active. To change the active status, simply click on this checkbox. The main dictionary that is first in the list is considered the primary dictionary. The order of dictionaries in the list is also the order which they are searched, so the most frequently used language should be first in the list.

## **Add Button**

This button presents an open dialog for adding an existing main dictionary to the main dictionary list.

## **Remove Button**

This button removes the currently selected main dictionary from the main dictionary list. It is not removed from the computer, just the available dictionaries list.

## **Up and Down Buttons**

These buttons move the selected user dictionary up and down in the main dictionary list. The order of dictionaries in the list is also the order which they are searched, so the most frequently used user dictionary should be first in the list.

## **User Dictionary List**

This list shows the user dictionaries that are known to the system. The checkbox to the left of the item indicates whether or not a specific dictionary is active. To change the active status, simply click on this checkbox. The order of dictionaries in the list is also the order which they are searched, so the most frequently used user dictionary should be first in the list.

## **Add Button**

This button presents an open dialog for adding an existing user dictionary to the user dictionary list. When adding a preexisting user dictionary, Microsoft Word user dictionaries (.DIC file extension) may also be used.



## **Remove Button**

This button removes the selected user dictionary from the user dictionary list.

**Add Words To:**

This selection box lets you specify which user dictionary new words and auto-corrections are to be added to. This must be an active user dictionary and cannot be a Microsoft Word user dictionary.

## **Ignore Upper Case Option**

This option forces the spell checker to ignore all words that are fully uppercase.

## **Ignore Partial Numbers Option**

This option forces the spell checker to ignore words that have imbedded numeric characters within (in addition to alphabetic characters).

## **Generate Suggestions Automatically Option**

This option forces the spelling checker to make suggestions for replacement of a word as soon as a misspelled word is located. If this option is not checked, no suggestions are given initially.

### **Primary Dictionary Only Option**

This option forces all suggestions to be constructed from the primary dictionary only. If the option is not checked, then suggestions are generated from each main dictionary. The primary dictionary is the first dictionary in the main dictionary list.

## **Re-check Replaced Words Option**

This option forces the spelling checker to re-check words that it has replaced as a result of a change or change all operation.

## **OK Button**

This button saves the current configuration and closes the configuration window.



## **Cancel Button**

This button aborts any changes made to the current configuration and closes the configuration window.

## **New Button**

This button adds a new user dictionary to the user dictionary list.

## **Reset Ignore All Button**

This button clears the list of words the spell checker is ignoring for the current session.

## **Reset Change All Button**

This button clears the list of words the spell checker is automatically changing for the current session.

**Ignore HTML Tags**

This option will force the spelling checker to ignore any text found within HTML tags encountered during the parse.

## **Ignore URLs and E-mail Addresses**

This option forces the spelling checker to ignore common internet strings, such as URLs and e-mail addresses.

