

***Pittsburgh*[®] Paints**

PaintSelect ESP

Instruction Manual



Table of Contents

INTRODUCTION	1
PURPOSE.....	1
PREREQUISITE	1
OBJECTIVES.....	1
CHAPTER 1 - INTRODUCTION	
WHAT IS PAINTSELECT ESP?	3
FEATURES DESIGNED AROUND MY NEEDS	3
PRODUCT INDEX	3
CUSTOM SEARCH	4
PRODUCT SELECTOR	4
SYSTEM SELECTOR.....	5
CHAPTER 2 – BASIC NAVIGATION	
SETTING UP PAINTSELECT ESP	7
STARTING PAINTSELECT ESP	15
MAIN MENU FEATURES	18
DROP-DOWN MENU	18
SEARCH FEATURE	19
PRODUCT INDEX.....	23
PRODUCT SELECTOR	25
CUSTOM SEARCH	28
SYSTEM SELECTOR	29
PLAY INTRODUCTION.....	34
HELP	34
SEARCH BUTTONS	34
GLOSSARY	37
INDEX.....	43



Introduction

Purpose

The purpose of this manual is to describe *Pittsburgh®* Paint's **PaintSelect ESP** program and how to use it.

Prerequisite

Basic knowledge of Windows 95 Operating environment

System Requirements

Minimum system requirements are:

- ☞ Intel Pentium 90 MHz or faster compatible processor.
- ☞ Microsoft Windows 95, Windows 98 or Windows NT 4.0 operating system.
- ☞ 16 Mb RAM for Windows 95/98
- ☞ 24 Mb RAM for Windows NT 4.0
- ☞ 32 Mb hard Disc space (if installing **PaintSelect ESP** on your hard Disc.)
- ☞ 8-bit VGA display (24-bit recommended)
- ☞ 8-bit audio card highly recommended
- ☞ Windows Media Player recommended

Objectives

The user will be able to

- ☞ start the application
- ☞ navigate to the various **PaintSelect ESP** screens
- ☞ choose the desired search tool
- ☞ view and print Material Safety Data Sheets (MSDS) and Technical Data Bulletins (TDB)
- ☞ close the application



Chapter 1 - Introduction

What is PaintSelect ESP and what can it do for me?

PaintSelect ESP (Electronic Sourcing Program) is a tool designed for dealers, architects, specifiers, contractors and engineers to obtain comprehensive technical data on all *Pittsburgh®* Paints products in a convenient CD format. Whether you are familiar with our paint line or paint in general, **PaintSelect ESP** makes finding the right product quick and easy. You also can quickly and easily view or print out technical specifications (Material Safety Data Sheets (MSDS) or Technical Data Bulletins (TDB).

PaintSelect ESP is windows-based and uses point and click mouse techniques familiar to most personal computer users. It is being widely distributed in a compact disc format. In the future, users also will be able to access the same information in a web-based format on-line via an Internet connection to www.pittsburghpaints.com.

What features are designed around my needs?

One of the first things you will see on the Main Menu screen is the general search window. If you are familiar with the *Pittsburgh* Paints line, just type in any key word related to a Product Code, Name or a Product Line description and **PaintSelect ESP** displays a list of all products that match your criteria. (For example, type in the word: **manor** and click the **Search** button. All *Manor Hall®* Product lines, together with their associated Product Codes will display.) When the products appear, you are able to click on **TDB** (Technical Data Bulletin) or **MSDS** (Material Safety Data Sheet) to view and print these documents for each product.

Four other search features are summarized below:

Product Index

The Product Index is for people familiar with *Pittsburgh* Paints products and can go right to the source using the Product Index. All *Pittsburgh* Paints products are conveniently shown on one list that can be sorted either by Product Line or Product Code.

When the products appear, you are able to click on **TDB** (Technical Data Bulletin) or **MSDS** (Material Safety Data Sheet) to view and print these documents for each product.



Custom Search

If you have some specific paint characteristics in mind, you can use Custom Search to narrow our product list to meet your precise needs. In fact, you can select any of up to six of these familiar paint parameters:

Market (Commercial, Industrial or Residential)

Location (Interior or Exterior)

Sheen (Flat, Gloss, Lo-Lustre, etc.)

Vehicle/Formulation (Acrylic Urethane, Alkyd/Oil, Vinyl Acrylic Latex, etc.)

Specialty (Dry Fog, Fire Retardant, Glaze, etc.)

Type (Primer, Finish or Other)

When the products appear, you are able to click on **TDB** (Technical Data Bulletin) or **MSDS** (Material Safety Data Sheet) to view and print these documents for each product.

Product Selector

If you are not sure how many or even which paint characteristics listed in **Custom Search** are necessary to select the exact product you need, then **Product Selector** can guide you through the process. **Product Selector** will ask you to identify five basic product characteristics.

Location

Type

Sheen and

Vehicle

Select answers, from the drop down list, to see the exact product(s) that match your requirements.

When the products appear, you are able to click on **TDB** (Technical Data Bulletin) or **MSDS** (Material Safety Data Sheet) to view and print these documents for each product.



System Selector

Architects, Engineers, Specifiers, Dealers, and Contractors need to be able to specify a painting system that matches their design specifications in an accurate and timely manner. You only need to respond to System Selector's questions to get a list of recommended paint systems along with their associated Material Safety Data Sheets (MSDS) and Technical Data Bulletins (TDB). Identify these six basic characteristics for your design application, and **PaintSelect ESP** finds the right system(s) for you.

For the **Residential and Commercial market segments**, the following criteria appear:

Product Type (Paint or Stain)

Location

Sheen

Vehicle

Substrate

The **Industrial market segment** has different criteria:

Location

Sheen

Exposure

Substrate (the surface to be painted)

Condition

The next chapter describes Getting Started and how to Navigate around **PaintSelect ESP**.

Play Introduction

The **Play Introduction** Drop-down menu choice plays a short video and sound clip on the *Pittsburgh Paints* brand, and introduces the **Paint Select ESP** program as another innovative tool from *Pittsburgh Paints*. When complete, it returns you to the screen from which **Play Introduction** was selected.



Chapter 2 – Basic Navigation

Setting Up PaintSelect ESP

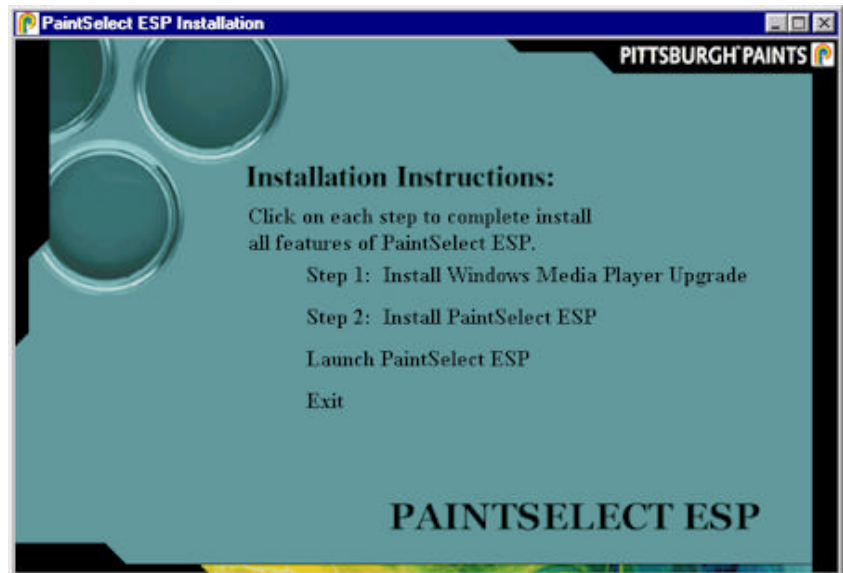
When you insert the **PaintSelect ESP** Compact Disc (CD) into your computer and it starts, you will be offered a choice to set up the program to routinely run using the CD or to install the program onto your hard Disc to be able to use it later without the CD. In both cases, a Setup Wizard automatically leads you through the procedure.

You will need to run this procedure only once on each computer that will use **PaintSelect ESP**. During Setup a **PaintSelect ESP** desktop icon will be created for you.



Procedure: (To Set Up **PaintSelect ESP**)

1. Insert the **PaintSelect ESP** CD into the Compact Disc or Digital Video Disc (DVD) reader on your computer, normally designated as your **D:** drive. The **Installation** screen displays.



1. **Step 1: Install Windows Media Player Upgrade**

Select **Step 1: Install Windows Media Player Upgrade**. If you choose to install the Windows Media Player, select this option and follow the instructions to complete the installation.



2. **Step 2: Install PaintSelect ESP**


Select **Step 2: Install PaintSelect ESP**. The Setup **Welcome** screen displays.




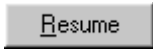
Chapter 2 – Basic Navigation



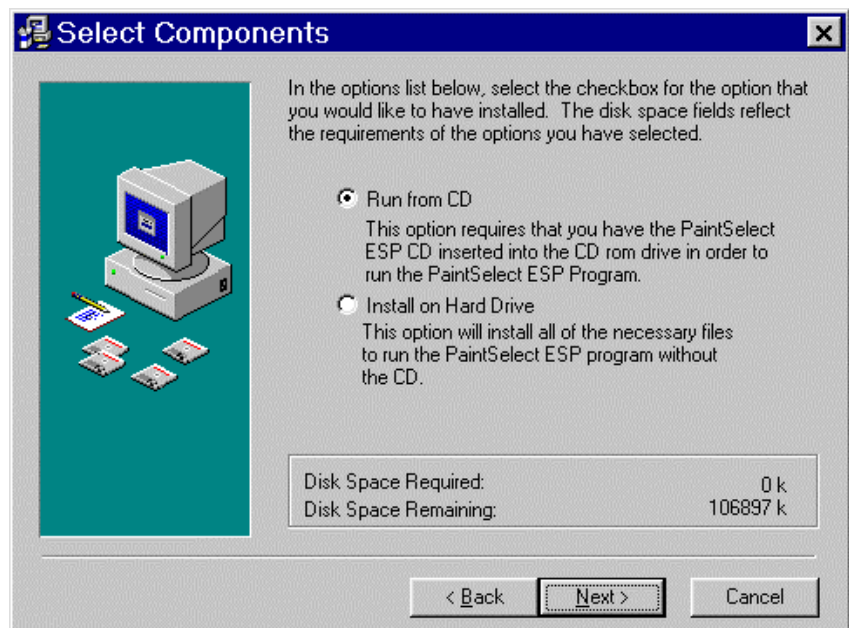
Note:

-  You may select **Cancel** at any time to cancel Set Up. If you do, the **Install** window displays.



-  Either select **Exit Setup**
or
 select **Resume** to continue the **Set Up**.

1.  Select **Next**. The **Select Components** window displays.




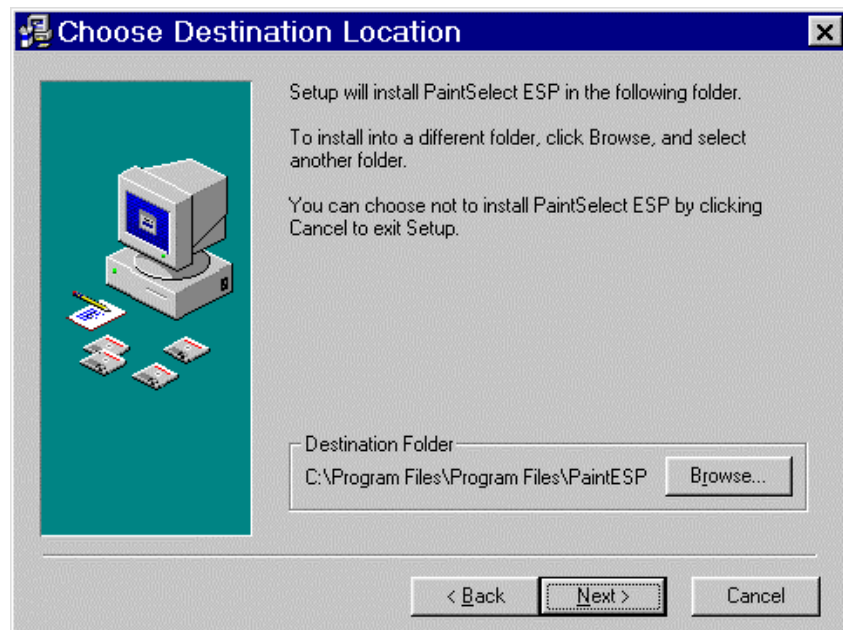
Chapter 2 – Basic Navigation

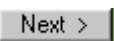
1. Select the **Run from CD** radio button (This option requires that you have the CD-rom in the CD-rom drive to run the application.

OR

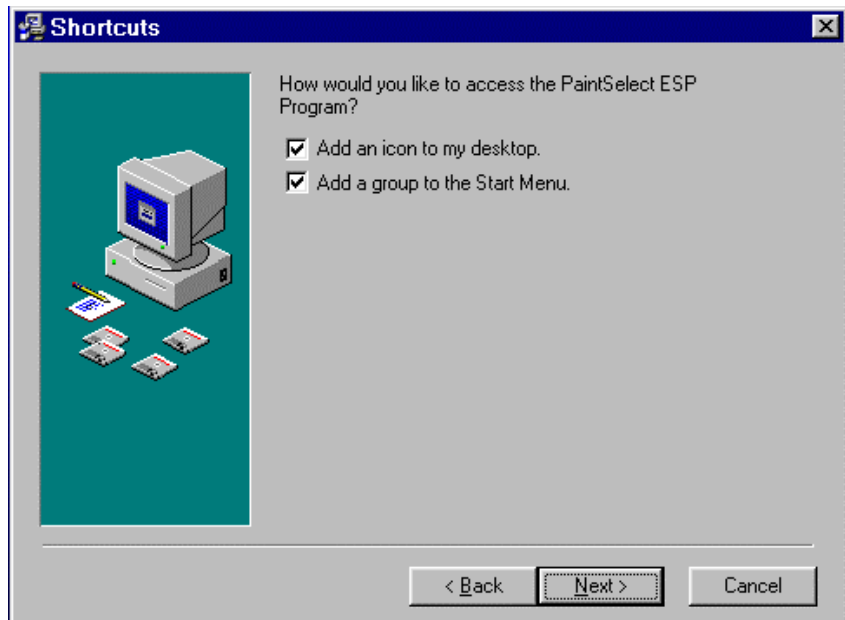
select the **Install on Hard Drive** radio button to install all of the files required to run PaintSelect ESP to your hard-drive. This option does NOT require physical access to the PaintSelect ESP cd-rom.


2.  Select **Next**.
- If you chose **Run from CD**, skip step 5. Go to step 6 and continue this procedure.
- If you chose **Install on Hard Drive**, the following window displays. Continue this procedure (step 5).

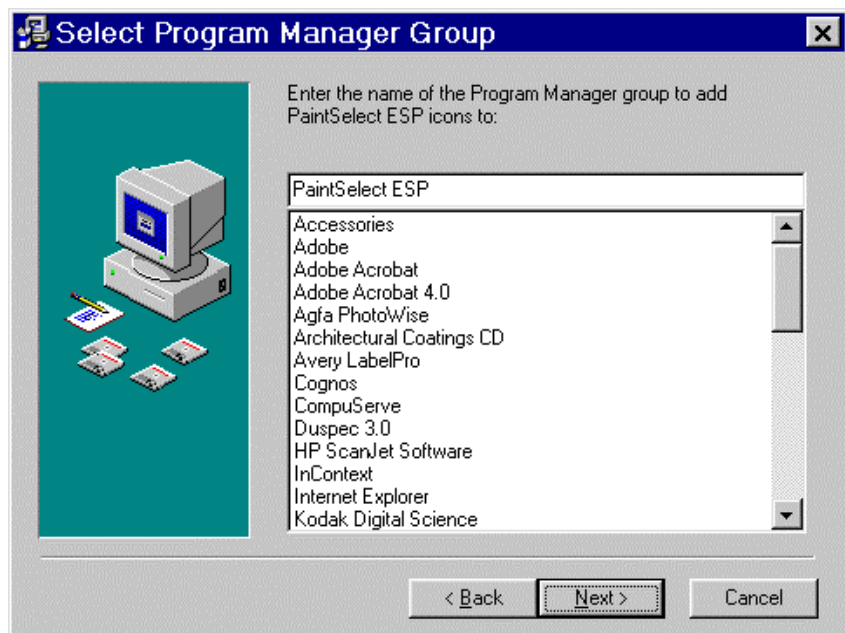


1.  Select **Next** to accept the destination folder suggested by the Wizard.





1. Select the appropriate access options.
2.  Select **Next** to accept the checked access options.




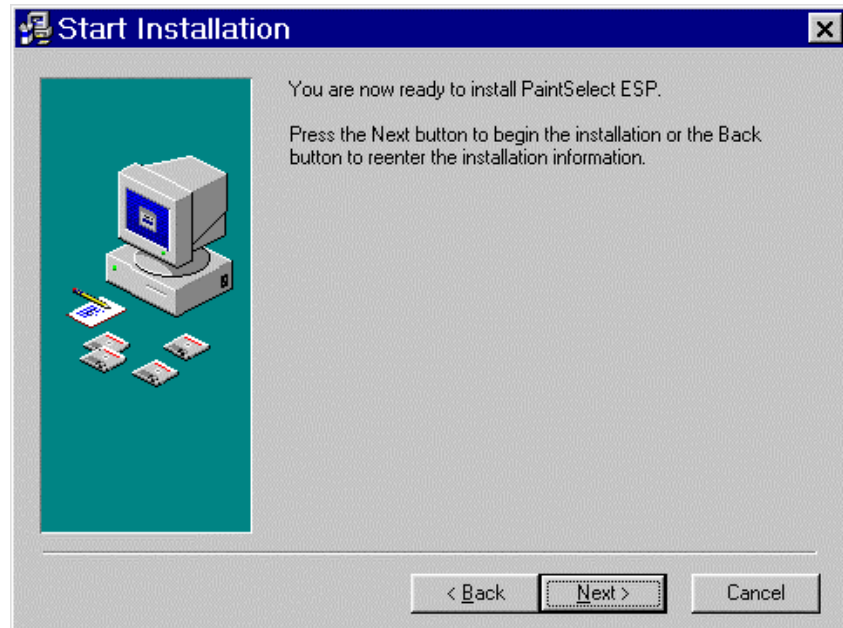
Note:


- The **Select Program Manager Group** will only display when you select the **Add a group to the start menu** option.



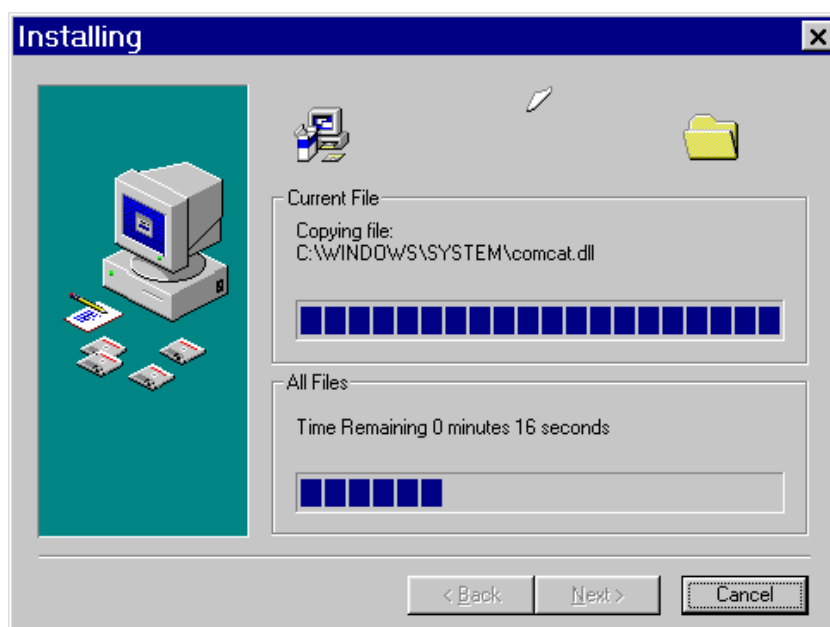
Chapter 2 – Basic Navigation

1.  Select **Next** to accept the **PaintSelect ESP** Program Manager Group as the location for **PaintSelect ESP** icons. The **Start Installation** window displays.

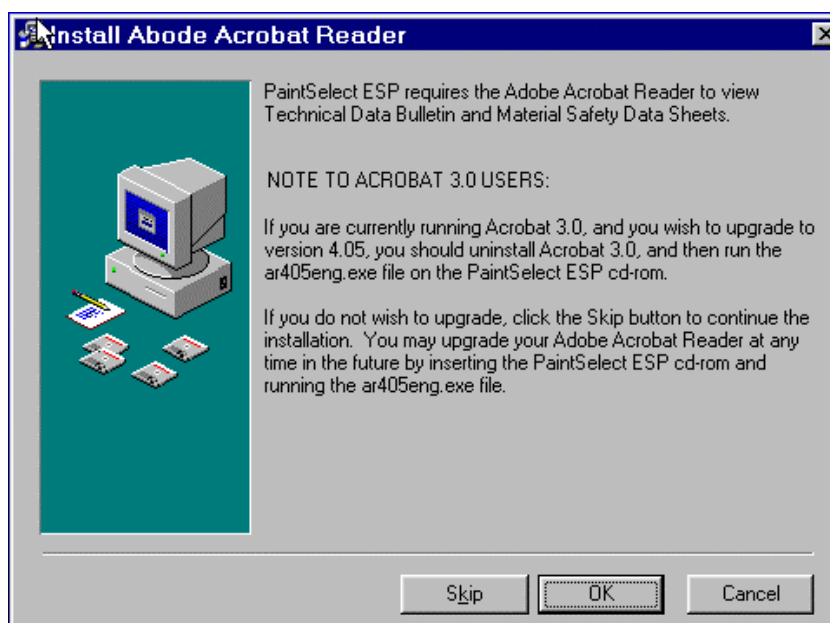


2.  Select **Next** to begin the installation. The **Installing** window displays.





Upon completion of the PaintSelect ESP software installation, the Install Adobe Acrobat Reader window displays.

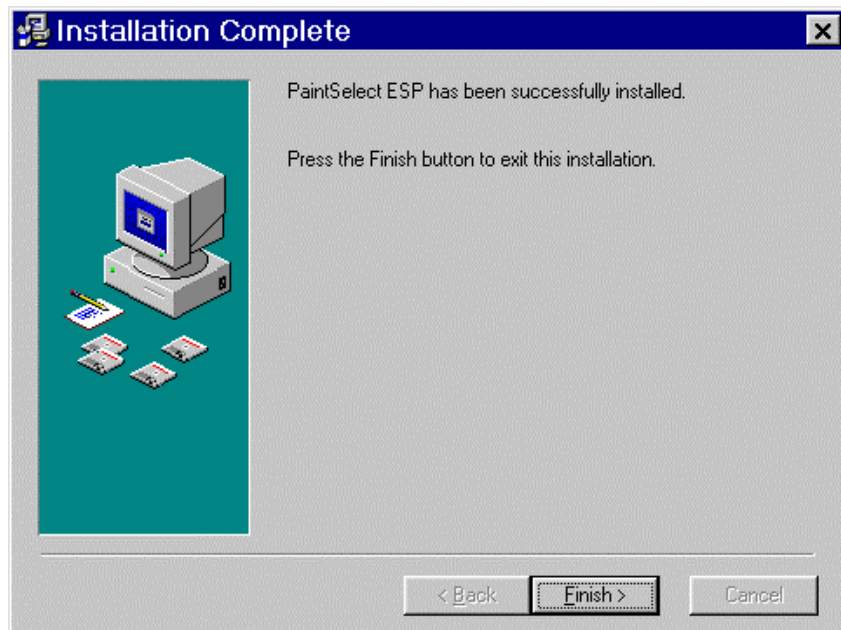



OK

Select **OK** and follow the instructions to complete the installation of the Adobe Acrobat Reader.



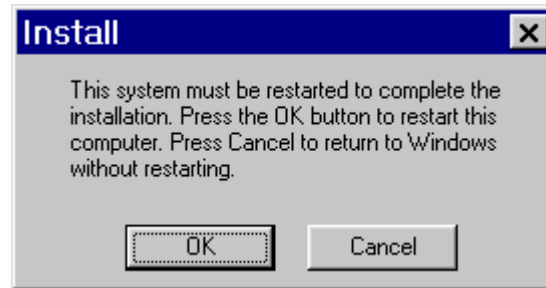
When **Set Up** finishes the **Installation Complete** window displays.

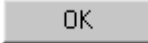


1.  Select **Finish**. The **Install** dialog box displays.



Chapter 2 – Basic Navigation



1.  Depending on which files require an update you may be asked to restart your computer. If prompted, click **OK** to restart your computer.

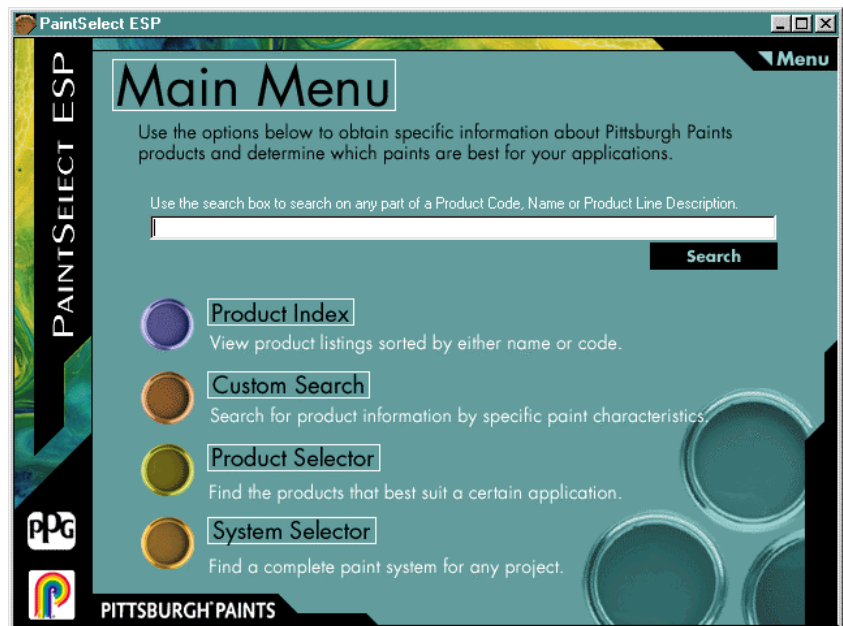
Starting PaintSelect ESP



Procedure:



1. **PaintESP** Double-click the **PaintSelect ESP** icon that was created during the Set Up procedure.
2. When **PaintSelect ESP** launches, the **Main Menu** screen displays.



3. See **Main Menu Features** starting on page **Error!**
Bookmark not defined..





Chapter 2 – Basic Navigation

Main Menu Features

The features of the Main Menu are pointed out below.




Drop-down Menu

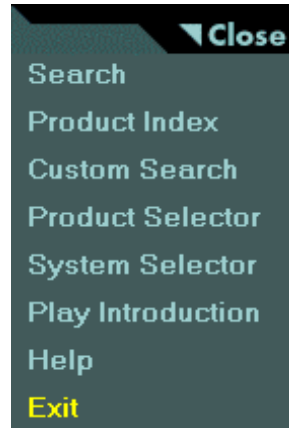
The **Drop-down Menu** gives you the following options:

- Main Menu (only displays when you are not already on the Main Menu).
- Search
- Product Index
- Custom Search
- Product Selector
- System Selector
- Play Introduction
- Help
- Exit
- Close



Procedure: (To use the **Drop-down Menu**.)


1.  Select the **Menu** icon located in the upper right corner of the **Main Menu** screen. The **Drop-down Menu** displays.



2. Select the screen you want and **PaintSelect ESP** will take you there.



Note:

-  Select the **Close** option on the Drop-down menu to close the menu and return to the current screen.

Search Feature

The Search feature selects only those products that match your search criteria. You can begin a general search of by one of two methods:

- Using the Search textbox on the Main Menu screen or
- Using the Search feature from the Drop-down Menu as described below.


Either way, you will get the same results.

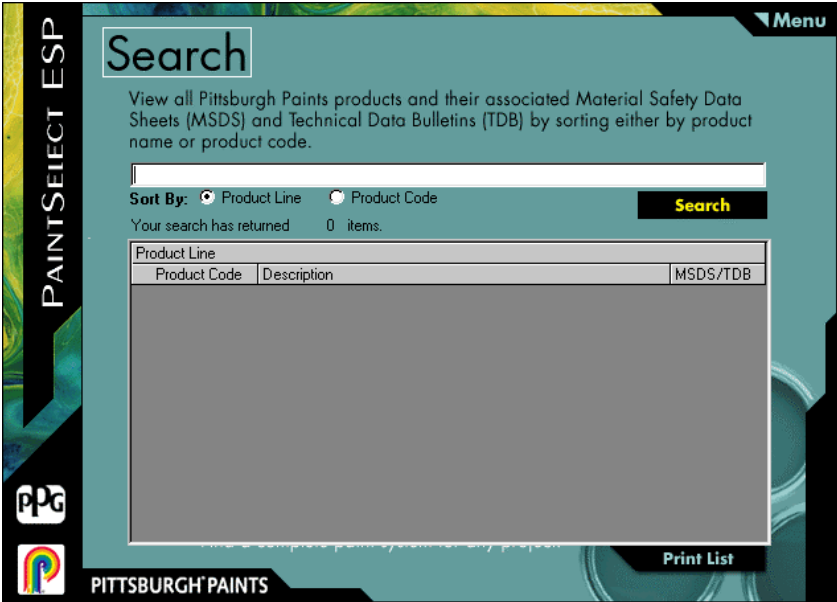



Chapter 2 – Basic Navigation



Procedure: (To use the **Search** feature.)

1.  Select the **Menu** icon located in the upper right corner of the **Main Menu** screen. The **Drop-down Menu** displays.
2. Select **Search**. The **Search** window displays.



3. Type a keyword into the white textbox.
4.  Select the **Search** button to view your results.



Product Line			▲
Product Code	Description	MSDS/TDB	
MANOR HALL Exterior Premium Eggshell Latex House and Trim		TDB	
79-110	White and Pastel Mixing Base	MSDS	
79-150	Midtone Mixing Base	MSDS	
79-200	Deeptone Mixing Base	MSDS	
79-300	Deep Rustic Mixing Base	MSDS	
79-45	Super White	MSDS	
MANOR HALL Exterior Premium Flat Latex House and Trim		TDB	
74-110	White and Pastel Mixing Base	MSDS	
74-150	Midtone Mixing Base	MSDS	
74-200	Deeptone Mixing Base	MSDS	
74-300	Deep Rustic Mixing Base	MSDS	
74-45	Super White	MSDS	

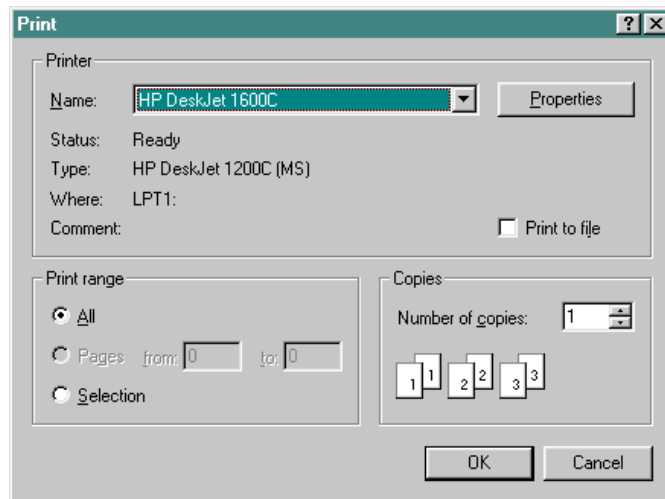





Note:

- You can sort either by **Product Line** or by **Product Code**.

-  Select the appropriate **Sort** radio button.
-  Select the **Print List** button to print a copy of your results. The **Print** window displays.



-  Select **OK** to start printing.
- When the products appear, you also have the option of choosing the MSDS (Material Safety Data Sheet) or TDB (Technical Data Bulletin) to view and print for each product.
- To perform another general search or a different type of search, select the Drop-down Menu and choose the option you want.
- To exit **PaintSelect ESP**, select the Drop-down Menu and choose **Exit**.



Note:

- As a shortcut, you don't have to use the Drop-down menu and go to a separate screen to do a general search. Type a keyword into the Main Menu's **General**



Search Window and click . You'll get the same results.



Chapter 2 – Basic Navigation

Product Index



The Product Index shows **all** *Pittsburgh Paints* products on a single list that can be sorted either by Product Line or Product Code.



Procedure:

1. Select **Drop-down Menu** and **Product Index**. The **Product Index** window displays.



2.  Select the appropriate **Sort** radio button to sort by Product Line or Product Code.
3.  Select the **Print List** button if you want to print a copy of your results. Remember, this is a rather long list. When the products appear, you also have the option of choosing the MSDS (Material Safety Data Sheet) or TDB (Technical Data Bulletin) to view and print for each product.
4. To perform a different type of search, select the Drop-down Menu and choose the option you want.
5. To exit **PaintSelect ESP**, select the Drop-down Menu and choose **Exit**.





PITTSBURGH PAINTS

A new generation of paint company
for a new generation.

Product Selector

The Product Selector can guide you through the process of narrowing the *Pittsburgh Paints* Product List to match your product requirements. Product Selector will ask you to identify five basic product characteristics:

Market Segment
Location
Type
Sheen and
Vehicle.

Product Selector will retrieve a list of recommended products and their associated MSDS and TDB. The MSDS and TDB can be viewed on screen and printed for each retrieved product. Results will be sorted primarily by Product Line and secondly by Product Code.




Procedure:

1. Select **Drop-down Menu** and **Product Selector**.
The **Product Selector** window displays.

2. Step 1 of 5. Use the drop down arrow and select a Market Segment from the list provided.



Chapter 2 – Basic Navigation


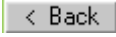
1.  When you have selected the right Market Segment, select the **Next** button.

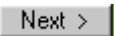




Note:


Example choices list:

Market:	Residential
Location:	Interior
Type:	Primer
Sheen:	Flat
Vehicle:	Vinyl Acrylic Latex

- Product Selector displays a running list of the choices you have made for easy reference.
-  If you make a mistake, or if you would like to start Product Selector over, from any point in the procedure, just select the **Restart** button.
-  If you want to change a previous selection without starting over from the beginning, select the **Back** button until you reach the step you need.

1. Step 2 of 5. Use the drop down arrow and select a Location from the list provided. Select .
2. Step 3 of 5. Use the drop down arrow and select a Type from the list provided. Select .
3. Step 4 of 5. Use the drop down arrow and select a Sheen from the list provided. Select .
4. Step 5 of 5. Use the drop down arrow and select a Vehicle from the list provided.

Product Line		
Product Code	Description	MSDS/TDB
SPEEDHIDE Interior Latex Enamel Undercoater		TDB
6-855	White	MSDS
SPEEDHIDE Interior Latex Sealer Quick-Drying		TDB
6-2	White	MSDS

5.  Select the **Print List** button to print a copy of your results. When the products appear, you also have the option of choosing the MSDS (Material Safety Data Sheet) or TDB (Technical Data Bulletin) to view and print for each product.
6. To perform a different type of search, select the Drop-down Menu and choose the option you want.



7. To exit **PaintSelect ESP**, select the Drop-down Menu and choose **Exit**.

Custom Search

If you have a unique set of characteristics different from the five characteristics used by Product Selector, then you can use **Custom Search** to retrieve customized Product Line and Product Code data. This flexible method allows you to use from one to six product characteristics categories, of your own choice, to drive the search.

Custom Search provides drop-down list choices for these six product characteristics:

- Market
- Location
- Sheen
- Vehicle/Formulation (eg: Acrylic Urethane, Alkyd/Oil, Vinyl Acrylic Latex, etc.)
- Specialty (Dry Fog, Fire Retardant, Glaze, etc.) and
- Type (such as Primer or Finish).



Procedure:

1. Select **Drop-down Menu** and **Custom Search**. The **Custom Search** window displays.

PAINTSELECT ESP Menu

Custom Search

Customize your search by selecting paint characteristics below to retrieve a list of products and their associated Material Safety Data Sheets (MSDS) and Technical Data Bulletins (TDB).

Market Location

Sheen Vehicle/Formulation

Specialty Type

Your search returned 0 items. Show Results

Product Line		Product Code	Description	MSDS/TDB

PPG **PITTSBURGH PAINTS** Print List



Chapter 2 – Basic Navigation

1. Use as many of the six characteristic categories as you need to input your requirements.
2. **Show Results** Select the **Show Results** button to retrieve the recommended Product Lines and Product Codes.

Product Line			
Product Code	Description	MSDS/TDB	
FAST DRY 35 Inhibitive Primers			TDB
95-908	Red Oxide Primer		MSDS
95-919	Gray Primer		MSDS
PITTSBURGH Paints Cementitious Waterproofing Block Filler			TDB
95-217	White		MSDS
PITTSBURGH Paints Epoxy Fast Dry Primer			TDB
94-109	Epoxy Fast Dry Primer- Red Oxide		MSDS
PITTSBURGH Paints Int/Ext Rust Inhibitive Steel Primers			TDB

3. **Print List** Select the **Print List** button to print a copy of your results. When the products appear, you also have the option of choosing the MSDS (Material Safety Data Sheet) or TDB (Technical Data Bulletin) to view and print for each product.
4. To perform a different type of search, select the Drop-down Menu and choose the option you want.
5. To exit **PaintSelect ESP**, select the Drop-down Menu and choose **Exit**.

System Selector

Use **System Selector** to specify a painting system that matches your design specifications. Just respond to **System Selector**'s questions to get a list of recommended paint systems along with their Material Safety Data Sheets (MSDS) and Technical Data Bulletins (TDS). **PaintSelector ESP** matches these six basic characteristics for your design application to find the right system(s). The criteria list varies depending up on the Market Segment selected. The Residential and Commercial markets produce the following criteria:



Product Type (Paint or Stain)
Location
Sheen
Vehicle
Substrate (the surface to be painted)

The Industrial market criteria are:

Location
Sheen
Exposure
Substrate
Condition





Procedure:

1. Select **Drop-down Menu** and **System Selector**. The **System Selector** window displays.

2. Step 1 of 6. Use the drop down arrow and select a Market Segment from the list provided.
3. **Next >** When you have selected the right Market Segment, select the **Next** button.



Note:

Example choices list:

Market	Commercial
Product Type	Paint
Location	Interior
Sheen	Lo-Sheen
Vehicle	Alkyd/Oil/Urethane
Substrate	Gypsum Wallboard-Drywall

- System Selector displays a running list of the choices you have made for easy reference.
- **Restart** If you make a mistake, or if you would like to start System Selector over, from any point in the procedure, select the **Restart** button.
- **< Back** If you want to change a previous selection without starting over from the beginning, select the **Back** button until you reach the step you need.



Chapter 2 – Basic Navigation

1. Step 2 of 6. Use the drop down arrow and select a Product Type from the list provided. Select [Next >](#).
2. Step 3 of 6. Use the drop down arrow and select a Location from the list provided. Select [Next >](#).
3. Step 4 of 6. Use the drop down arrow and select a Sheen from the list provided. Select [Next >](#).
4. Step 5 of 6. Use the drop down arrow and select a Vehicle from the list provided. Select [Next >](#).
5. Step 6 of 6. Use the drop down arrow and select a Substrate from the list provided. The results display automatically.

Product Line		
Product Code	Description	MSDS/TDB
Better		
Primer	SPEEDHIDE Interior Latex Sealer Quick-Drying	TDB
6-2	White	MSDS
Intermediate:	SPEEDCRAFT Interior Enamel Wall and Trim Lo-Sheen Oil	TDB
5-90	White and Pastel Mixing Base	MSDS
Topcoat	SPEEDCRAFT Interior Enamel Wall and Trim Lo-Sheen Oil	TDB
5-90	White and Pastel Mixing Base	MSDS
Best		
Primer	SPEEDHIDE Interior Latex Sealer Quick-Drying	TDB
6-2	White	MSDS



Note:

- Results will clearly state the Quality Level for each recommended system. Refer to the Glossary starting on page **Error! Bookmark not defined.** for definitions of *Pittsburgh Paints'* Quality Levels.
1. **Print List** Select the **Print List** button to print a copy of your results. When the products appear, you also have the option of choosing the MSDS (Material Safety Data Sheet) or TDB (Technical Data Bulletin) to view and print for each product.
 2. To perform a different type of search, select the Drop-down Menu and choose the option you want.



3. To exit **PaintSelect ESP**, select the Drop-down Menu and choose **Exit**.



Play Introduction

The **Play Introduction** Drop-down menu choice plays a short video and sound clip on *Pittsburgh Paints* and explains what Paint Select ESP is designed to do. When complete, it returns you to the screen from which Play introduction was selected.

Help

Selecting the **Help** Drop-down menu choice opens a copy of this manual for viewing on-line.

Exit

The **Exit** Drop-down menu choice erases any results being displayed and shuts down PaintSelect ESP. It does **not** just exit you from the Drop-down menu.



Remember to choose **Close** to close the Drop-down menu when you want to keep working in PaintSelect ESP.

Search Buttons

The Main Menu screen has four Search Buttons that bring you directly to **Paint Select ESP's** most frequently used functions. A diagram showing the location of the Search Buttons can be found on page **Error! Bookmark not defined..**

Search Button	Description
Product Index	View product listings sorted by either name or code.
Custom Search	Search for product information by specific paint characteristics
Product Selector	Find the products that best suit a certain application.
System Selector	Find a complete paint system for any project.

Selecting the **Search Button** (or the title next to it) will take you to the appropriate feature's window.

Chapter 2 – Basic Navigation

Use your mouse to select the search tool you want. **Search Pushbuttons** provide exactly the same functionality as using the **Drop-down menu** and selecting one of the menu choices.



Glossary



Best Quality	A Commercial Market Segment Quality Level. Our premium professional paint formulated for the commercial and residential market and professional painters as well.
Better Quality	A Commercial Market Segment Quality Level. An excellent professional product formulated for commercial applications.
Commercial Market Segment	Consists of strictly professional applicators working on commercial, institutional and/or new home construction.
Custom Search	Methodology to search for product information by matching any of six paint characteristics.
Industrial Market Segment	This market covers high performance coatings applied by professional applicators for industrial, heavy duty environments, like plants, warehouses and tanks.
Location	Where the paint is to be applied. Choose from Interior, Exterior or Interior/Exterior.
Market or Market Segment	The major divisions of <i>Pittsburgh Paint's</i> Market. Use one of these three terms: Commercial, Industrial or Residential
MSDS	Material Safety Data Sheets
PaintSelect ESP	<i>Pittsburgh Paint's</i> custom Electronic Sourcing Program.
Premium Quality	A Residential Market Segment Quality Level. "Workhorse" premium brands formulated to meet the performance requirements of the residential market and professional painters.
Product Code	Numerical code for each type of paint.



Glossary (continued)

Product Index	Methodology to view all product listings sorted by either Product Line or Product Code.
Product Line	<i>Pittsburgh Paints' Brands: Aquapon®, Brilliant Relections®, Builder's Spec™, Coal Cat®, Fast Dry, Hide a Spray, Manor Hall®, Metalhide®, Multiprime®, Pitt-Cryl®, Pitt-Flex®, Pitt-Glaze®, Pitt-Guard®, Pitt-Tech®, Pitt-Therm®, Pitthane®, Pittsburgh Paints, Polyclutch®, Pro Siding Plus, ®Stains (several), Satinhide®, Seal Grip®, Speedcraft®, Speedhide®, Speedpro®, Sun-Proof®, Wallhide®</i>
Product Selector	Guided methodology to search for Product information. Uses five basic product characteristics.
Professional Quality	A Commercial Market Segment Quality Level. Products formulated for professional use and application.
Residential Market Segment	Consists of residential re-paint professional painters and consumers.
Sheen	Degree of reflectivity of a paint finish after it has dried. Use: Flat, Eggshell, Lo-Lustre, Lo-Sheen, Satin, Semi-Gloss, and Gloss.
Specialty	Special paint types outside of the usual paint vehicle categories. The following specialty paint types are PaintSelect ESP choices: Block Filler Dry Fog Epoxy Caulking Epoxy Surfacer Fire Retardant Glaze Marking Paint



Mildew Check®
Spray



Glossary (continued)

Substrate	<p>The type of surface to be painted. For example:</p> <ul style="list-style-type: none">AluminumConcrete Masonry UnitsConcrete, Stucco, Plaster, MasonryCotton or Canvas Covering over InsulationFerrous MetalGalvanized SteelGypsum Wallboard-DrywallMineral Fiber Reinforced CementWood and Hardboard
Super Premium Quality	<p>A Residential Market Segment Quality Level. Our absolutely best paint. These unique formulas meet the superior performance expectations of residential homeowners and professional painters.</p>
System Selector	<p>Guided methodology to search for a painting system that matches six basic product characteristics.</p>
TDB	<p>Technical Data Bulletins</p>
Type	<ul style="list-style-type: none">PrimerFinishPrimer/FinishOther
Vehicle/Formulation	<p>The paint composition, specifically:</p> <ul style="list-style-type: none">Acrylic Urethane-HPCAcrylic/100% AcrylicAlkyd/Oil/UrethaneEpoxy-Solvent/Waterborne-HPCVinyl Acrylic Latex



Index



B	
Basic Navigation.....	11
C	
Custom Search	6, 25
D	
Drop-down Menu	18
E	
ESP	5
Exit	29
F	
Features.....	5
H	
Help	29
I	
installing	11
Introduction	5
Play.....	7
M	
Main Menu Features	18
Menu	
Drop-down	18
O	
Objectives	1
P	
PaintSelect ESP	5
Play Introduction	7, 29
Prerequisite	1
Product Index.....	5, 22

Product Selector	6, 23
------------------------	-------

S

Search Buttons	29
Search Feature.....	19
Setting Up	11
Starting.....	16
System Requirements	1
System Selector	7, 26



