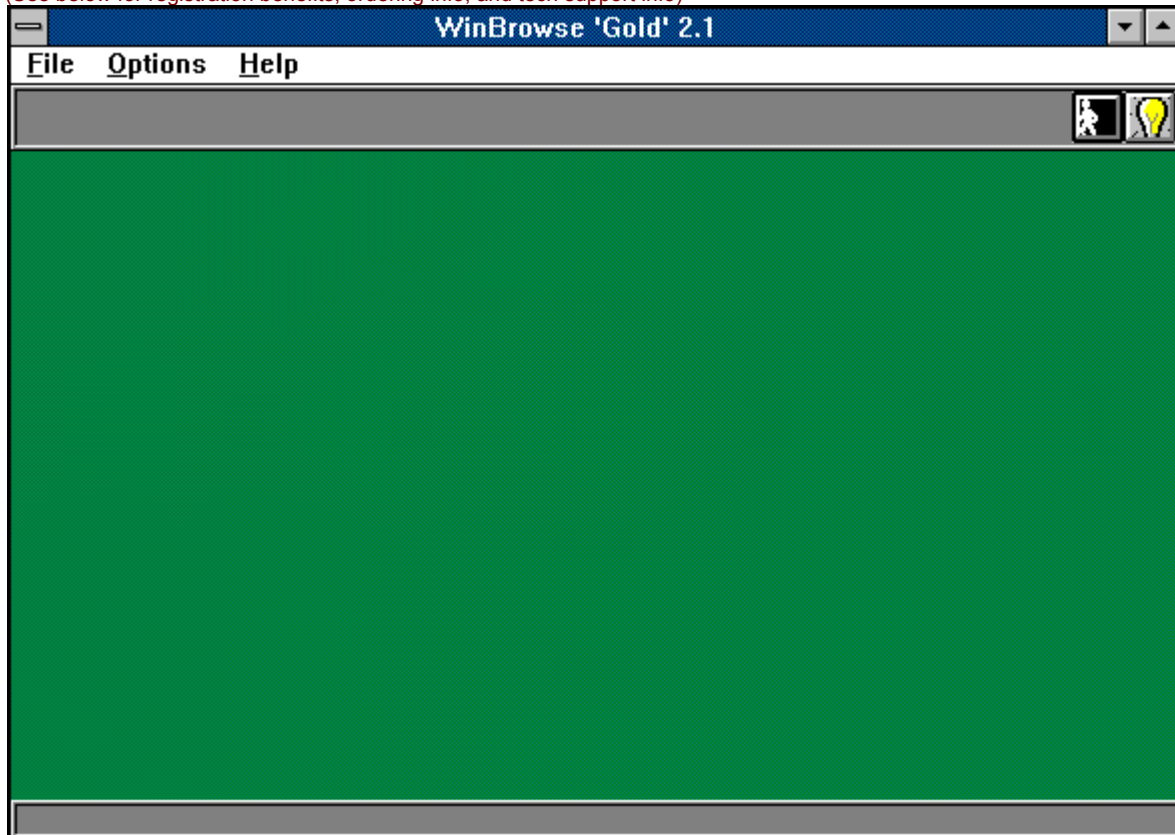


# WinBrowse 2.1

(C)1995 Q&D Software Development



(See below for registration benefits, ordering info, and tech support info)



## Contents:

- Browse Window
- Column Selection Window
- Command Line
- Compact Access Database
- Data Conversion
- Direct Loading
- Filters Window
- Fonts and Colors
- Help On 'Help'

Release Notes  
Repair Access Database  
Report Design Window  
Sort Order Window  
Tables List  
Toolbar

#### Registration Benefits:

The registered version of WinBrowse, **WinBrowse 'Gold'**, differs from the shareware version, **WinBrowse 'Lite'** in several ways. **WinBrowse 'Gold'** includes such features as 'Direct Loading', data editing capability for all supported database formats, and data conversion among most supported database formats. **WinBrowse 'Gold'** users are not subjected to 'nag' screens or any other reminder messages which occur in **WinBrowse 'Lite'**.

In addition to receiving added features, **WinBrowse 'Gold'** users are entitled to **FREE UPGRADES** to this program as they occur. (Shipping and handling charges may be incurred in some cases.)

Registered users of software products by **Q&D Software Development** have come to expect high quality customer service, whether by telephone or electronically. We encourage suggestions from our registered users. If you have any questions or suggestions about any of our products, please do not hesitate to let us know.

#### Ordering Information:

**WinBrowse 'Gold'** is available for \$29.95. A shipping and handling charge of \$3.95 will also be applied. (Shipping and handling charges of \$4.95 apply for orders outside the U.S.)

---

To order **WinBrowse 'Gold'** by **CREDIT CARD**, choose one of the following options:

- Visit the On-Line Order Desk section of our **WWW** home page at <http://www.q-d.com>
- E-mail us your name, address, phone number (optional), credit card type, number, and expiration date. Also, be sure to tell us which program you are ordering. **Compuserve** users may e-mail credit card orders to **76336,3271**. Internet users can send e-mail orders to [76336.3271@compuserve.com](mailto:76336.3271@compuserve.com).
- Call the Public (Software) Library at 1-800-242-4775 (1-800-2424-PSL), or 1-713-524-6394. **These phone numbers are for CREDIT CARD ORDERS ONLY.** We accept VISA, MasterCard, American Express, and Discover. Specify Product Number 11861. When ordering by credit card, please be prepared to give your name and billing address as it appears on the card.
- Mail us your name, address, phone number (optional), credit card type, credit card number, and expiration date. Also, be sure to tell us which program you are ordering. Our mailing address is:

**Q&D Software Development**  
**10-B Sentinel Court**  
**Chatham, NJ 07928**

---

To order **WinBrowse 'Gold'** via **Compuserve**: **GO SWREG** and register ID# 4307.

---

To order **WinBrowse 'Gold'** by mail:

Send a check or money order to:

**Q&D Software Development**  
**10-B Sentinel Court**  
**Chatham, NJ 07928**

Be sure to specify your name and shipping address, as well as the program name and version you are registering.

---

**Tech Support:**

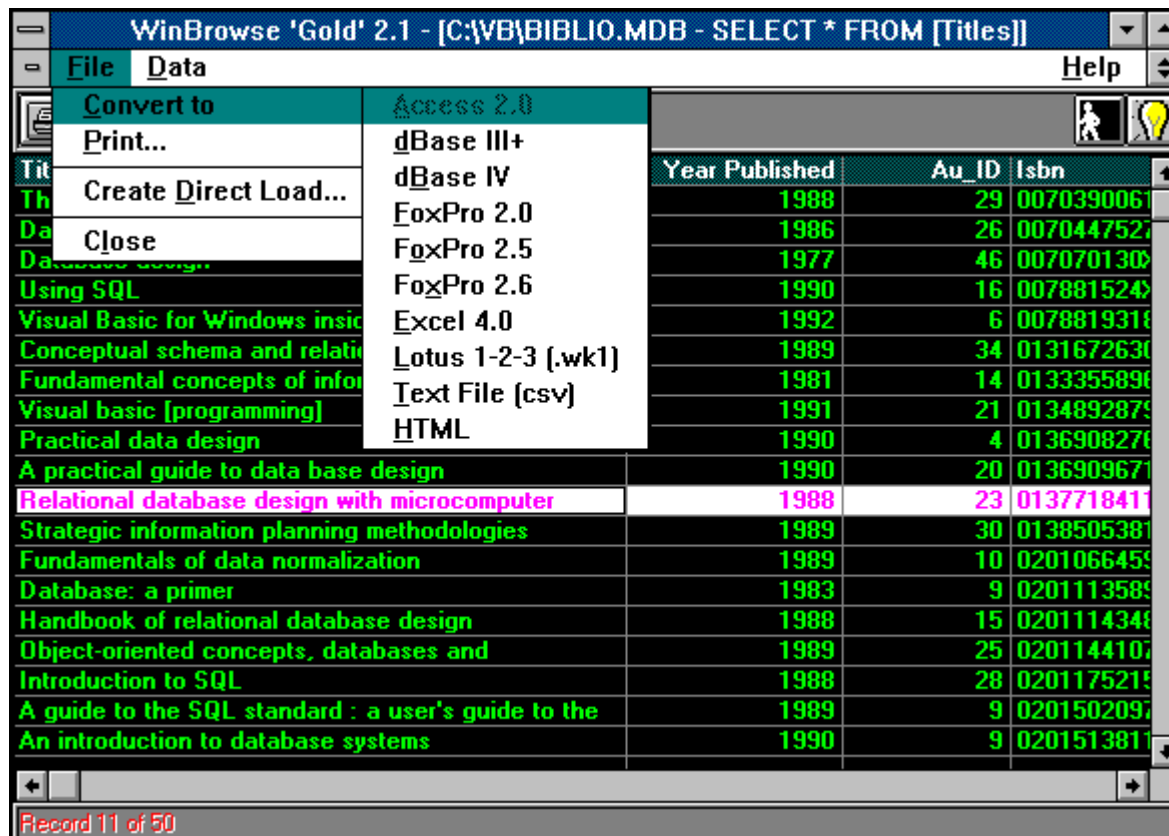
**As of April, 1995 Q&D Software Development now has a support forum on CompuServe! Feel free to stop in and visit us at GO WINAPD, Library 1.**

For free technical support, users of **WinBrowse 'Gold'** have several options. You may call us at **(201)635-1824**, leave e-mail at **CompuServe ID# 76336,3271**, leave e-mail at Internet address **dversch@q-d.com**, or visit our home page on the Internet's **World Wide Web** at **<http://www.q-d.com>**.

**Users of WinBrowse 'Lite' must rely on this help file for support.**

# Browse Window

The Browse Window is accessed by clicking File|(database format) from the Main Menu.



The Browse Window consists mainly of a grid and a toolbar. The grid will contain data arranged in rows and columns, each row representing a record in a recordset and each column representing a field. Data may be edited\* by clicking within a particular cell of the grid. The panel beneath the grid tells you the current row as well as the total number of rows in the current recordset. For example, the panel might read 'Record 3345 of 6040', meaning that the highlighted record occupies the 3345th row of a recordset containing 6040 records.

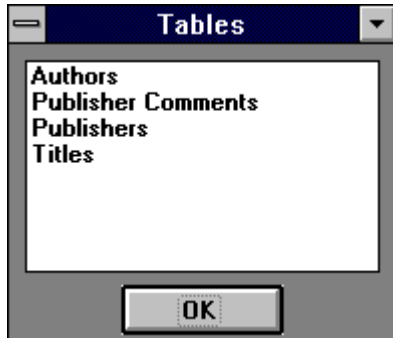
The Browse Window menu allows navigation to several different WinBrowse features. These features include Sorting, Filtering, Printing, and Conversion\* of data.

The toolbar allows you to access many of these features with the click of one single button.

**\*Note:** Features marked with an asterisk (\*) are available only with **WinBrowse 'Gold'**, and not with **WinBrowse 'Lite'**.

# ***Tables List***

The Tables List appears whenever you ask to open an Access 2.0 database.

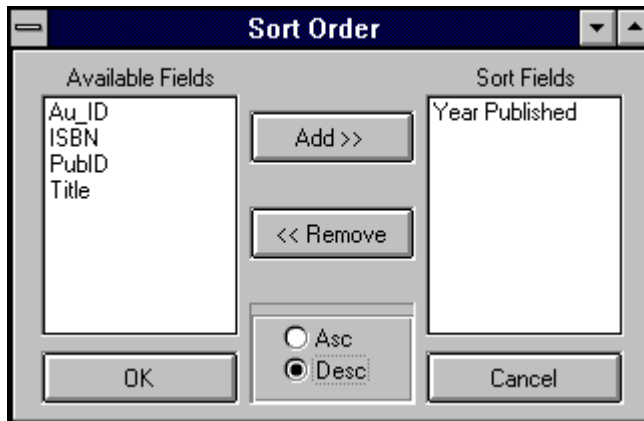


The Tables List contains a list of all tables contained within the specified database. Selecting a table by clicking on it in the list and then clicking the OK button will cause the Browse Window to be opened, displaying a recordset containing all of the records in that table.

**Note:** The Access 2.0 format provides for multi-table database files, unlike most other PC database formats. In this way, the Access 2.0 format is similar to larger 'relational' databases.

# Sort Order Window

The Sort Order Window is accessed either by clicking Data|Sort... from the Browse Window menu or clicking the Sort button on the Toolbar.



The Sort Order Window allows you to set the order in which you would like the records in the current recordset to be viewed, printed, or converted.

To include a field in your sort order, click on that field in the Available Fields listbox, then click the Add button. This causes the selected field to be moved from the Available Fields listbox to the Sort Fields listbox. Repeat this process for each field you would like to sort on. To remove a field from the sort order, click on that field in the Sort Fields listbox and click the Remove button.

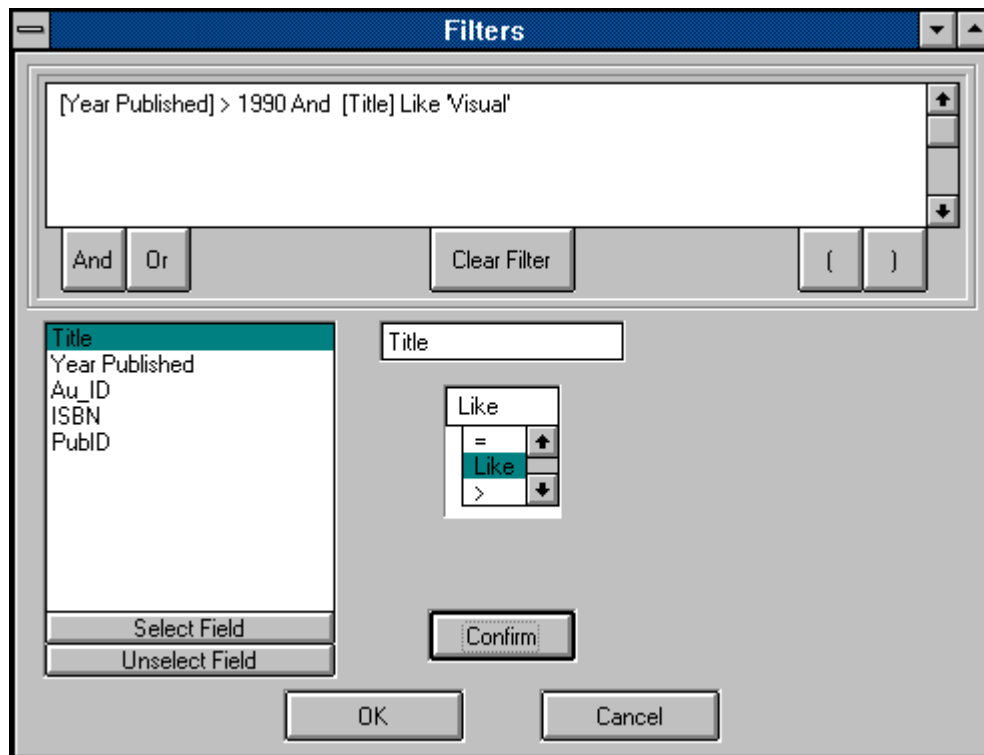
**WinBrowse** creates a sort order by using the topmost field in the Sort Fields listbox as the primary sort, the second field in the Sort Fields listbox as the secondary sort, etc.

Clicking the OK button closes the Sort Order Window and refreshes the current recordset in the Browse Window so that it is displayed in the sort order you just set.

The following examples will help to illustrate the concept of a sort order. Suppose you have a database (or table) containing information about your company's customers. Let's also suppose that this table has fields called 'Last Name', 'First Name', 'City', 'State', and 'Zip Code'. If you want to see your customers listed by state, and in alphabetical order within each state, you would set a sort order of 'State' + 'Last Name', or perhaps even 'State' + 'Last Name' + 'First Name'. Now, if you wanted to take this same data and rearrange it so that it would be displayed in zip code order instead, your sort order would be simply 'Zip Code'. Perhaps you'd rather arrange the data by state, and by city within each state. To do this you would set your sort order to 'State' + 'City'. Remember that **WinBrowse** reads your sort order by beginning at the top of the Sort Fields listbox and working downward.

# Filters Window

The Filters window can be accessed by clicking Data|Filters... from the Browse Window menu or by clicking the Filters button in the Toolbar.



The Filters window allows you to extract records from the current database (or table) using selection criteria which you define. The Filters window allows you, in effect, to build an equivalent of the WHERE clause portion of an SQL statement.

You can create a filter based on as many fields as you like. For example, let's say you have a table containing information about cars that your company owns. Fields in this table might be 'Make', 'Model', 'Year', and 'Color'. Now, let's suppose you wanted a list of all cars made by Ford. Your filter in such a case would be "Make = 'Ford'". Let's take it one step further by adding a qualifier that you only want to see Fords made prior to 1992. Your filter in that case would be "Make = 'Ford' And Year < 1992". Now, let's say that for some reason your boss wants a report listing all Fords and Buicks which happen to be of the color blue. Your filter in this case would be: "(Make = 'Ford' Or Make = 'Buick') And Color = 'Blue'". Get the picture? WinBrowse also incorporates the 'Like' operator in the Filters window. The 'Like' operator allows you to use wildcards in your filters. Using the preceding example, let's say your boss wanted to see a list of cars whose colors begin with the letter 'B'. (I know it's ridiculous, but haven't you had a boss like that?) Anyway, if you enter the statement 'Color Like 'B\*'' that'll do it.

The actual procedure for creating a filter is simple:

- Click on the field you wish to qualify in the Fields Listbox in the lower left corner of the Filters window.
- Click the Select Field button directly beneath the Fields Listbox. This causes the name of the field to be displayed in the Selected Field box.
- Click on the operation you desire in the Operations Listbox directly beneath the Selected Field box.
- Enter the qualifying value you wish to set as your filter. The method used depends on the data type

of the selected field. (This is explained in greater detail below.)

- Click on the Confirm button. This causes WinBrowse to build an expression based upon your criteria and display it in the Query Window.

Utilize the And button, the Or button, and the parenthesis buttons as needed by clicking on them. You can clear the Query Window and start over by clicking the Clear Filter button. To unselect a field that you have just selected, prior to clicking the Confirm button, just click the Unselect Field button.

For those users having SQL experience, you'll be pleased to note that **WinBrowse** takes the idea of creating a filter one step beyond. **WinBrowse** actually determines the data type of the selected field and displays the appropriate mechanism for entering the criteria for that field. For example, if the field is a text field, once you've entered your valid value into the Value box and clicked the Confirm button, **WinBrowse** knows to surround this value in quotes before displaying it in the Query Window. If the selected field is a date field, **WinBrowse** displays a calendar in which you click on the desired date rather than having to type it manually, thus reducing the likelihood of a typo, and relieving users from having to concern themselves with how best to represent a date value in the Query Window.

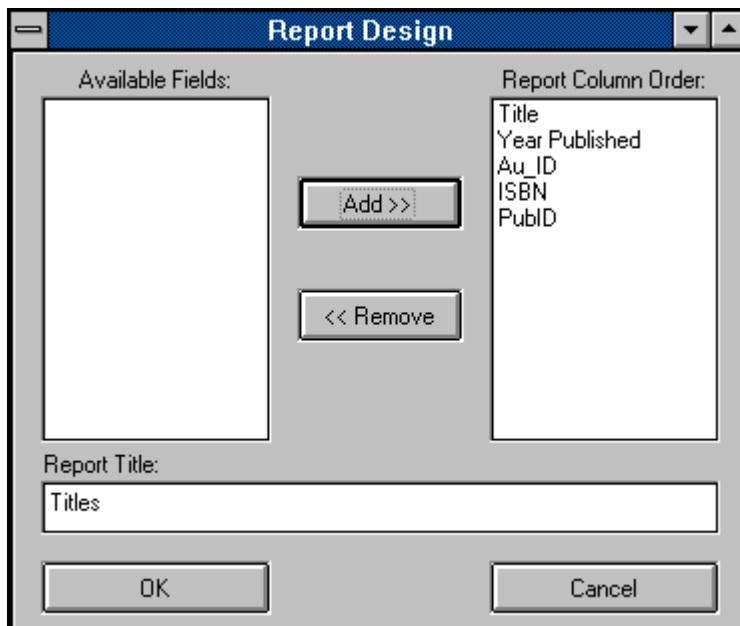
To activate your filter, click the OK button. **WinBrowse** will then close the Filters window and refresh the grid in the Browse Window with a recordset containing only those records meeting the criteria you just set.

<b>Note:</b> To include a Null value in a filter, leave the Value Box blank.
--



# Report Design Window

The Report Design Window can be accessed by clicking File|Print... from the Browse Window, or by clicking the Print button in the Toolbar.



The Report Design Window allows you to specify which columns (or fields) you wish to appear in your report, and in what order. It also provides a means for adding a title to your report. (The default title is the name of the current database (or table).)

The left half of the Report Design Window contains the Available Fields listbox, consisting of all of the fields in the current table. To cause a field to appear in the report, simply click on that field in the Available Fields listbox, and then click the Add button. The selected field will be added to the Column Order listbox on the right half of the Report Design Window. Repeat this process until you are satisfied that the Column Order listbox contains all the fields you want in your report. (**WinBrowse** will create the report printing the topmost field in the Column Order listbox in the leftmost column, the second field from the top, in the next column to the right, etc.) To remove a field from the Column Order listbox, click on that field and then click the Remove button. If a field does not appear in the Column Order listbox, it will not be included as a column in the report.

To create a title which will appear at the top of each page of the report, fill in the title box at the bottom of the Report Design Window.

Once you've finished selecting your fields and entering your report title, click the OK button to run the report. Clicking the Cancel button causes the printing operation to abort.

# Toolbar

The Toolbar contains buttons offering shortcuts to many WinBrowse features.



The 'Close' button closes the Browse Window and returns you to the **WinBrowse** Main Menu. It is the same as clicking File|Close from the Browse Window menu.



The 'Column Select' button opens the Column Selection Window. It is a shortcut for clicking Data|Column Selection... from the Browse Window menu.



The 'Sort' button opens the Sort Order Window. It is the same as clicking Data|Sort... from the Browse Window menu.



The 'Filter' button opens the Filters Window. It is the same as clicking Data|Filters... from the Browse Window menu.



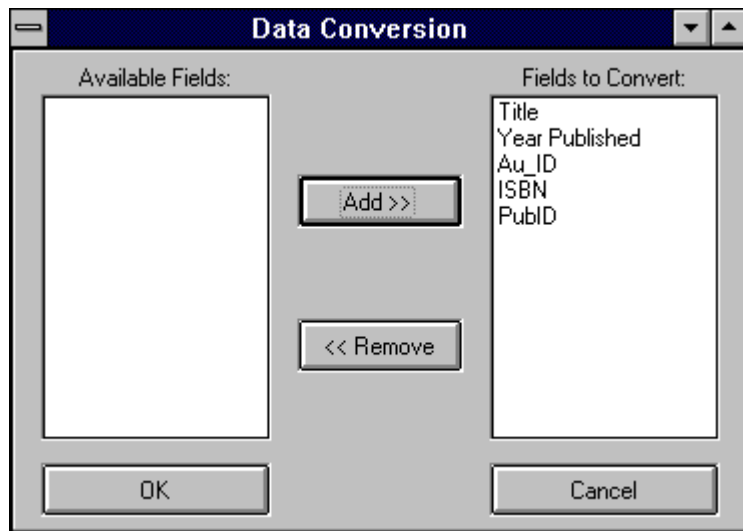
The 'Print' button opens the Report Design Window. It is the same as clicking File|Print... from the Browse Window menu.



The 'Help' button opens the WinBrowse Help System. It is the same as clicking Help from any menu or pressing the 'F1' key from any location.

# Data Conversion

The Data Conversion Windows is accessed by clicking 'File | Convert...' from the Browse Window menu.



**WinBrowse** makes converting data from one format to another a snap. To convert data, first open a database (or table\*) by clicking File|(existing database format) from the Main Menu. To convert this data from its present format to another format, click File|Convert To...|(new database format) from the Browse Window menu. The Data Conversion Windows appears and directs you to choose the columns you wish to be included in the conversion to the new format. (If you've chosen to convert your data to HTML, a checkbox will appear asking whether or not you would like your data to appear with borders, along with fields for HTML document title and table caption.) **WinBrowse** creates a new database, text file, or HTML file based on the new file format you choose, then copies the data from the existing recordset into the new database. During data conversion, the panel beneath the grid in the Browse Window displays a progress bar indicating the percentage of data conversion completed.

**\*Note:** When reading from (or writing to) an Access 2.0 database, you are asked to select (or create) a table within the selected Access database.

**Note:** If the current recordset does not contain the entire database (or table), then only the records within the current recordset are copied to the new database. If a sort order is in effect for the current recordset, the natural order of the new database (or table) will correspond to the sort order of the current recordset.

**Note:** The Data Conversion feature is available only in **WinBrowse 'Gold'**, and is accessible via **WinBrowse 'Lite'** during the evaluation period only.

# ***Help on 'Help'***

**The WinBrowse Help System can be accessed from any location in WinBrowse.**

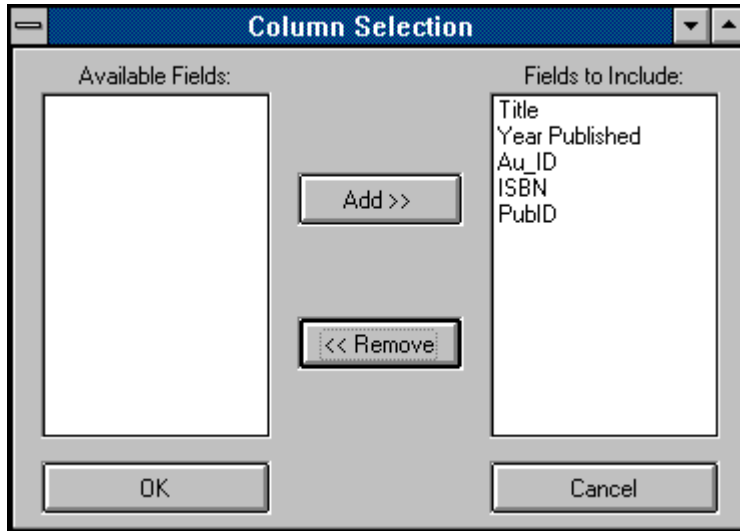
The Winbrowse Help System can be accessed in any of three different ways:

- Clicking Help|Contents from either the Main Menu or the Browse Window menu
- Clicking the Help button on the toolbar
- Pressing the 'F1' key on your keyboard. This method provides context-sensitive help, automatically displaying the help topic relevant to your current location in the program.

(C)1995 Q&D Software Development

# Column Selection Window

The Column Selection Window can be accessed by clicking Data | Column Selection from the Browse Window, or by clicking the Column Selection button on the Browse Window toolbar.



The Column Selection Window allows you to choose which columns in the current table will appear in the Browse Window.

The left half of the Column Selection Window contains the Available Fields listbox, consisting of all of the fields in the current table which are not already included in the Browse Window. To cause a field to appear in the Browse Window, simply click on that field in the Available Fields listbox, and then click the Add button. The selected field will be added to the Fields Included listbox on the right half of the Column Selection Window. Repeat this process until you are satisfied that the Fields Included listbox contains all the fields you want in your browse. To remove fields from the Fields Included listbox, highlight the field(s) and click the Remove button.

# Release Notes

## **11/5/95 - Released WinBrowse 2.1**

### Enhancements:

- Added facility for converting databases to HTML documents.
- Added Ascending/Descending toggle in Sort Window.
- Added filtering capability utilizing Nulls.

## **8/26/95 - Released WinBrowse 2.0**

### Enhancements:

- Added ability to call WinBrowse with command line arguments, causing WinBrowse to automatically load a particular database when first loaded.
- Added ability to create Program Manager icons for specific databases from within WinBrowse.
- Added ability to customize fonts and colors appearing in Browse Window.
- Added error log to facilitate product support.
- Added Setup program.

### Fixes:

- Fixed bug which caused databases not to load properly when moved to other directories.
- Fixed bug which sometimes causes "Can't find installable ISAM" error.

## **4/15/95 - Released WinBrowse 1.6**

### Enhancements:

- Now includes Access JET 2.5 engine.
- Includes upgrades to the xBase interface DLL (XBS200.DLL) and Paradox interface DLL (PDX200.DLL).
- Speeded up file format conversion process via transaction processing.
- New 'Compact Access Database' feature allows compacting of Access dataabase files.
- New 'Repair Access Database' feature allows reclamation of corrupted Access database files.

## **3/28/95 - Released WinBrowse 1.5c**

### Fixes:

- Fixed bug which caused system to hang when loading a table with no records.

## **3/26/95 - Released WinBrowse 1.5b**

### Fixes:

- Fixed bug which occurred when importing CSV files and caused system to halt with error message saying that the table did not exist.

- Fixed bug which caused columns to reappear after having been de-selected when subsequently applying sorts and/or filters.

### **3/16/95 - Released WinBrowse 1.5a**

#### Fixes:

- Fixed bug that caused system to crash in column selection due to bad SQL statement.

### **3/13/95 - Released WinBrowse 1.5**

#### Enhancements:

- Added Column Select Window - allows user to select/deselect columns to appear in current browse window.
- List boxes in Data Conversion Window, Report Design Window, and Sort Window are now multi-select.
- Added 'Like' operator to Filters Window to provide substring and wildcard searches.
- WinBrowse now creates WB.INI on the fly when first installed in order to avoid forcing users to edit WB.INI or move files around.
- Added support for importing and exporting of CSV (comma delimited) text files.
- Added support for exporting to Lotus 1-2-3 and Excel formats.

#### Fixes:

- Fixed bug in Data Conversion process which if process cancelled, still allowed common dialog box to open for file i/o.
- Fixed calendar in Filters Window to default to the current date rather than 1/5/95 (which was the date I originally created that window - oops!)

### **2/21/95 - Released WinBrowse 1.0b**

#### Fixes:

- Fixed bug which causes program crash if 0 records returned when filtering.
- Fixed bug occurring when converting to xBase file formats due to incorrect header information.

### **2/19/95 - Released WinBrowse 1.0a**

#### Fixes:

- Fixed bug occurring when converting to xBase file formats due to xBase not supporting field names of more than 10 characters in length.

### **2/14/95 - Released WinBrowse 1.0**

# ***Compact Access Database***

The Compact Access Database routine can be accessed by choosing File | Compact Access Database from the Main Menu.

**WinBrowse** allows you to reclaim any disk space being used unnecessarily by an Access database. During normal usage, database files tend to become fragmented, thus taking up more disk space than is actually necessary. **WinBrowse** will attempt to defragment Access 2.0 database files, thereby "compacting" them. Larger database files may experience dramatic savings in storage space through compacting.

***It is strongly recommended that you back up any database prior to compacting.***

(C)1995 Q&D Software Development



# ***Repair Access Database***

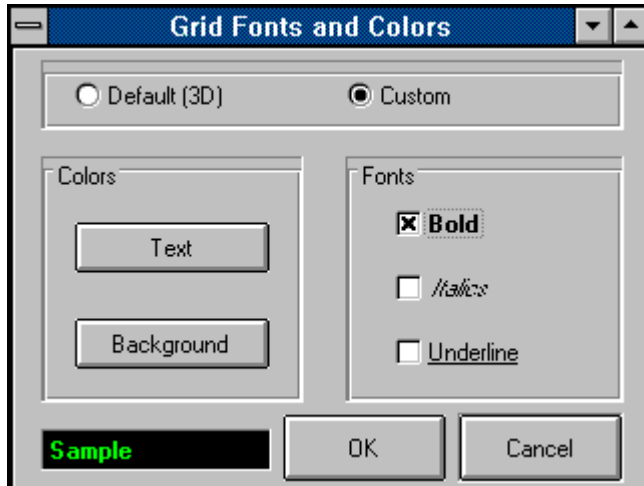
This operation may be accessed by clicking File | Repair Access Database from the Main Menu.

Database files can become corrupted in various ways; power failure, system lock-up, and file contention to name a few. Running the Repair Access Database operation in **WinBrowse** on an Access database may repair certain types of file damage.

(C)1995 Q&D Software Development

# Fonts and Colors

You can adjust the fonts and colors of your Browse Window by clicking Options|Table Preferences... from the Main Menu.



The Fonts and Colors Window makes it easy to customize the look of the Browse Window. You can choose to use Bold, Underlined, or Italicized fonts by clicking a checkbox, or any combination of checkboxes.

You may also change the text color and background color used by the Browse Window. To change the text color, click the Text Color button. You will be presented with a Colors Dialog Box, from which you may pick a color, or define your own custom color. Clicking the Background Color button allows you to change the background color of the Browse Window using a similar procedure.

The Sample text box shows you what the combination of colors and fonts you've chosen will look like.

# Direct Loading

You can create a Direct Load by clicking File|Create Direct Load... from the Browse Window menu.



Direct Loading refers to the ability in **WinBrowse** to create a Program Manager icon for a particular database. This allows you to simply click on a Program Manager icon to have **WinBrowse** display a particular database automatically upon loading.

To create a Direct Load, you must first open the database you wish to use in the Browse Window. Then, click File|Create Direct Load... You will then be presented with a Groups List (shown above), from which you may choose the Program Manager icon group into which this database's Direct Load icon will be placed. You may alternatively choose "[New Group]" from the list to have **WinBrowse** create a brand new Program Manager group for this database.

Once you have created a Direct Load icon for a database, you may load that database for viewing or editing at any time simply by clicking its Program Manager icon.

The Direct Loading feature works in conjunction with the Command Line feature.

# Command Line

The Command Line feature in **WinBrowse** allows you to supply a command line argument when calling **WinBrowse**, consisting of the path and file name of an existing database. Doing so will cause **WinBrowse** to load the specified database automatically when loaded.

*This feature can be used to effectively **add database capabilities to any application**. Just call WinBrowse and supply the name of the database to be loaded.*

<p><b>Note:</b> The redistribution of <b>WinBrowse 'Gold'</b> is strictly prohibited by the single user License Agreement. Anyone wishing to distribute <b>WinBrowse 'Lite'</b> or <b>WinBrowse 'Gold'</b> as part of another application must obtain written approval from Q&amp;D Software Development, and must pay the appropriate licensing fee(s) or royalties specified therein.</p>
---

**F**  
filter

**H**  
HTML

**R**  
recordset

**S**  
sort order  
SQL

**W**  
wildcards

**recordset**

A recordset is the set of records returned from a table based upon certain user-defined criteria. These criteria can be a Sort Order, a Filter, or a combination of the two.

**SQL**

SQL (Structured Query Language) is a language used to select and order records from a database or table. It is used primarily, but not exclusively, when dealing with larger 'relational' databases.

**filter**

A filter is a set of user-defined criteria which limit a recordset to records containing data which meet those criteria.



**sort order**

The term 'sort order' refers to the order in which records are presented within a recordset, table, or database.

**wildcards**

A wildcard is a character used as a substitute for another character or set of characters. WinBrowse utilizes the asterisk (\*) to denote a wildcard. WinBrowse allows wildcards to be placed at the beginning, at the end, or in the middle of a filter expression.

## **HTML**

HyperText Markup Language - used to create documents for viewing on the Internet's World Wide Web.



