

QuickTime™ Conferencing SDK

Using QTC with PowerTalk

Contents:

Using QTC with PowerTalk.....	2
About QuickTime Conferencing & PowerTalk Services	2
Information Cards.....	2
Stand Alone QT Conferencing Cards.....	2
QT Conferencing Cards within a User Card.....	4
Catalogs	7
Mailbox.....	8
PowerTalk Key Chain.....	8
Non-PowerTalk Browsers	9
Chooser Browser	9
TCP/IP Browser.....	9
ISDN Browser	10
Document Version.....	11
Credits	11
Important Note.....	11

Using QTC with PowerTalk

About QuickTime Conferencing & PowerTalk Services

PowerTalk system software provides a variety of services that are well suited for QuickTime Conferencing. The PowerTalk services used by QuickTime Conferencing are the following four items:

- PowerTalk Information Cards
- PowerTalk Catalogs
- PowerTalk Mailbox
- PowerTalk Key Chain

This document assumes the reader is familiar with System 7 Pro, System 7.5 and PowerTalk services. For further information on System 7 Pro or System 7.5, please refer to the PowerTalk User's Guide and PowerTalk Human Interface Guidelines.

Information Cards

An information card represents a Finder object that contains catalog information. For QuickTime Conferencing, there is a QT Conferencing card that holds service type, connection type, and network-specific information needed to establish a connection. This information is stored in the QT Conferencing card and is extracted by the QuickTime Conferencing browser when the user initiates a call.

In order to be able to create QT Conferencing cards, the QuickTime Conferencing Template system extension must be in the System Folder at startup. This template is automatically added to the System folder by the QuickTime Conferencing installer.

Stand Alone QT Conferencing Cards

There are several ways to create a QT Conferencing card. The first, and easiest, is with the help of the QuickTime Conferencing Browser component used by QuickTime Conferencing enabled applications. Once in the application's PowerTalk browser, select the party for whom you wish to create a card. Then use the browser's "Add" button to create a QT Conferencing card, stored in the preferred Personal Catalog.

Figure 1

Adding QT Conferencing cards via a PowerTalk Browser



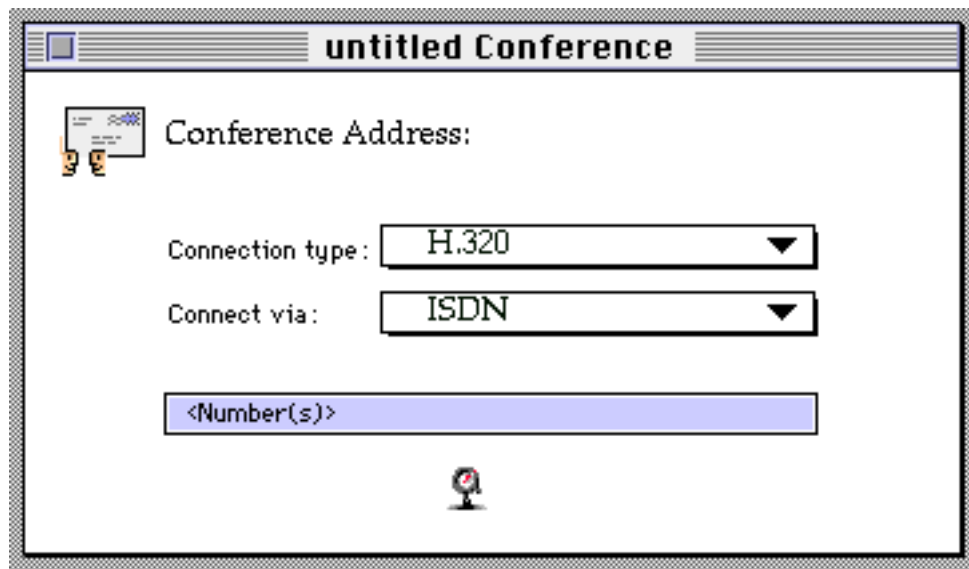
If you open the card from the Finder, you will note that all the information required by QuickTime Conferencing to make a connection has already been entered.

Stand alone address cards can also be created from the Catalogs menu item. This menu appears whenever a PowerTalk catalog is opened. To create a stand alone address card from the catalog menu, the user can select either "QTC Broadcast" or "QTC Conference" (or any other available service type) from the Catalogs menu.

All stand alone address cards will automatically be filtered by the QTC PowerTalk browser. For example, if the user selects "broadcast" from within the application, the browser will not display the stand alone cards of service types other than "broadcast."

Figure 2

Inside a configured QT Conferencing Address card



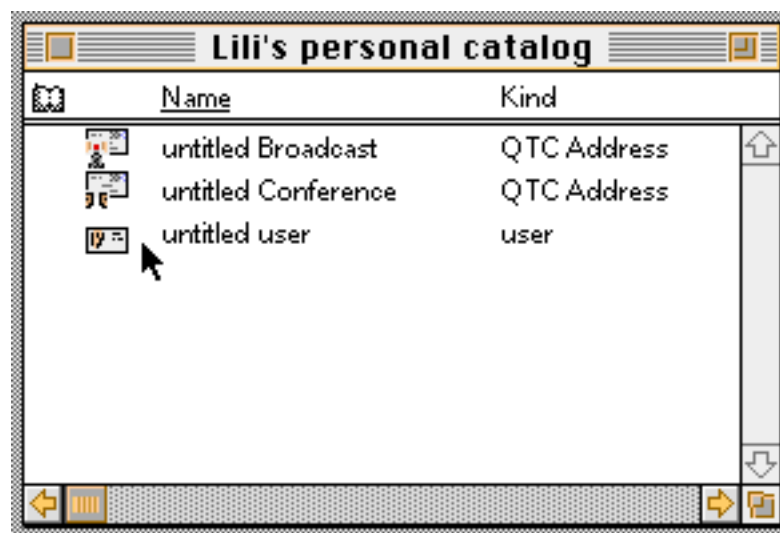
QT Conferencing Cards within a User Card

QT Conferencing addresses can also reside within a PowerTalk user card. To create a new user card, the user can access the Catalog menu which appears whenever a PowerTalk catalog is open.

For example, open the Personal Catalog and select "New User" from the Catalogs menu. This will create a new "untitled user" card.

Figure 3

An untitled user card inside the Personal Catalog



To add a new QTC address within a user card, open the user card to the QT Conferencing Address page and click on the “Add” button.

Figure 4 A user card opened to the QT Conferencing page

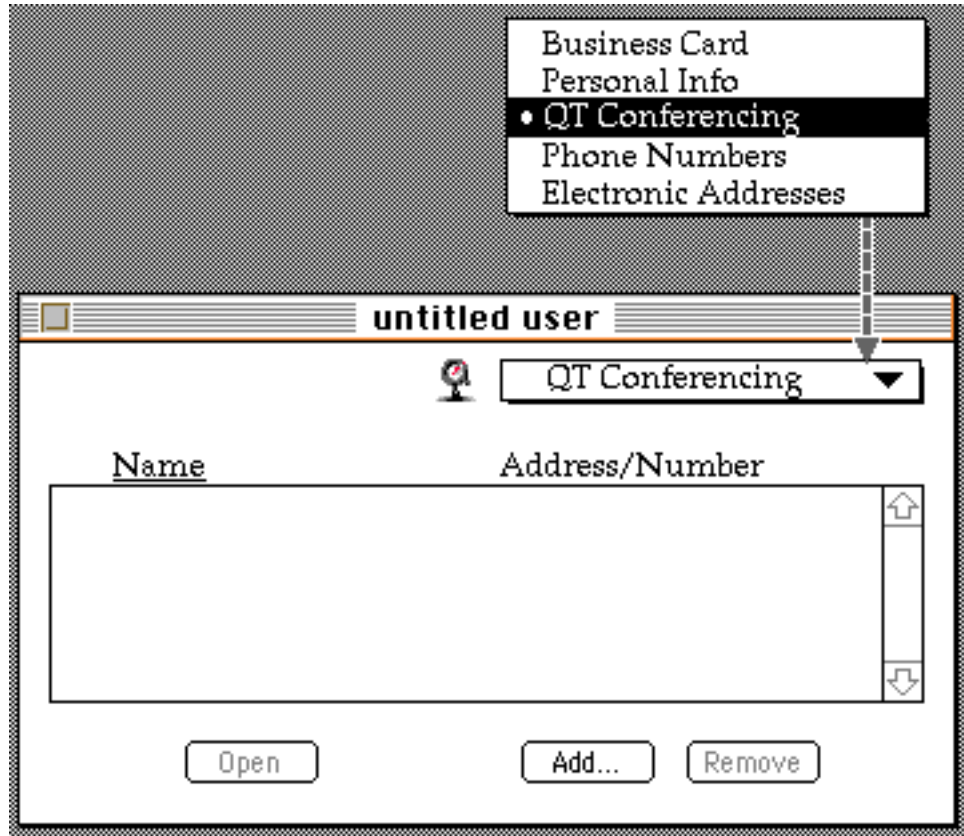
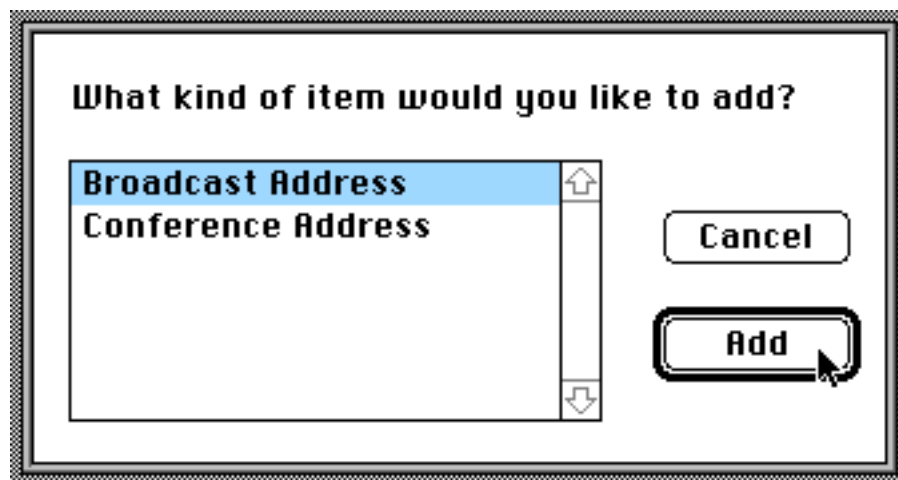


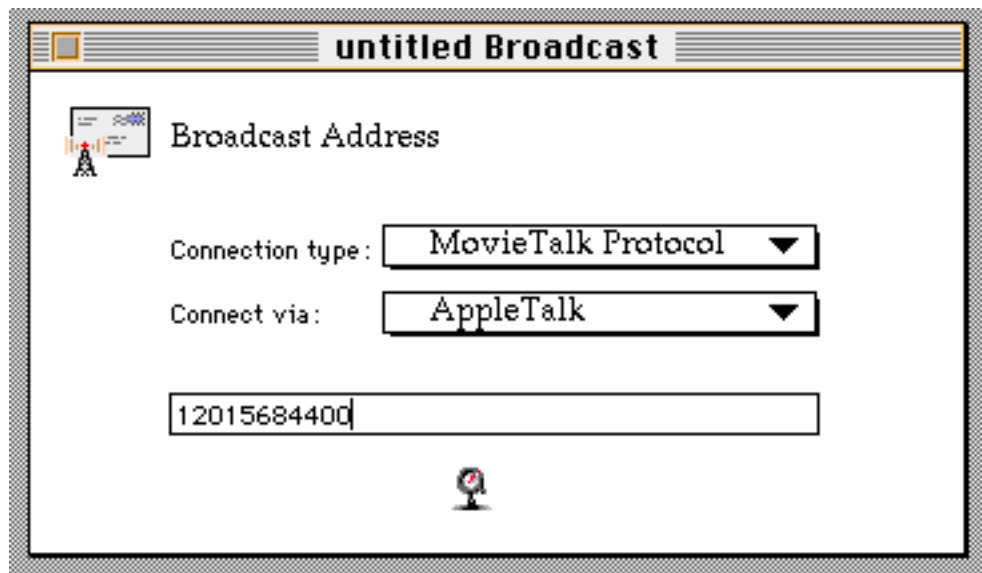
Figure 5 Creating a QT Broadcast card within the QT Conferencing page



Depending on the services types available on the user's machine, items will be provided in the "Add button" dialog.

Likewise, connections and network types available on the user's machine will appear on the address card via pop-up menus. (See Figure 6) These pop up menus will automatically provide the user with a selection of allowable configurations. The user must also type in a telephone number or a network address. Closing the card saves the information.

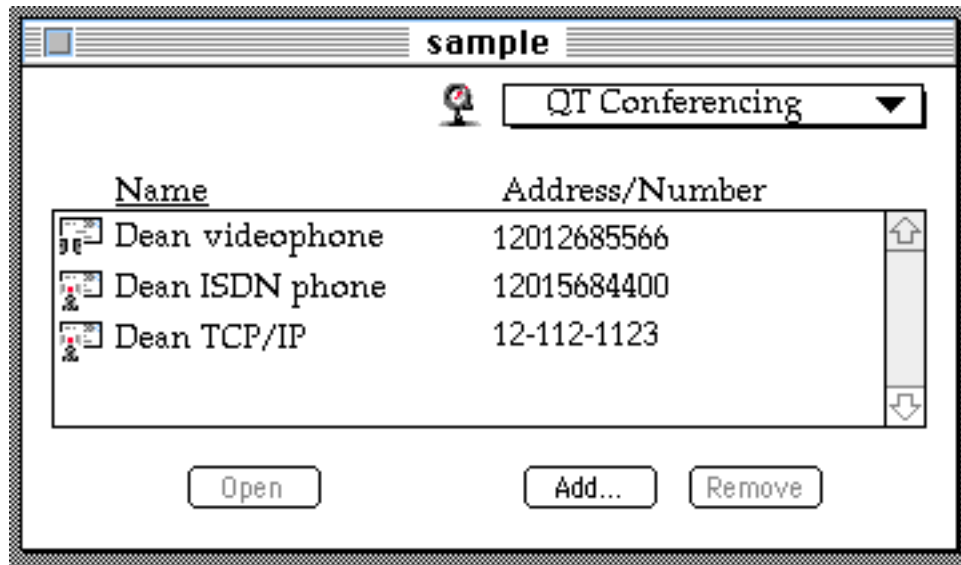
Figure 6 A new QT Broadcast Address card



When you close the "untitled Broadcast" address card, you will see it listed in the QT Conferencing page.

Figure 7

A list of QT Conferencing cards within user a card



It is possible to change the name of the "untitled user" card without affecting the internal information used by QuickTime Conferencing. However, note that re-naming a QT Conferencing card is not recommended.

Double clicking on the name, or clicking on the "Open" button, opens the appropriate QT Conferencing card. In addition, it is possible to drag a QT Conferencing card into or out of a user card. Dragging a QT Conferencing card out of a user card's QT Conferencing page will create a stand-alone QT Conferencing card with a single address.

Catalogs

Catalogs are convenient places to organize and store information cards. There are several catalogs and related services supported by PowerTalk and used by QuickTime Conferencing. These are: 1) AppleTalk Catalog, 2) Personal Catalog(s), 3) Other PowerShare Catalog(s), and 4) the Find in Catalog desk accessory. All catalog services are equally accessible and modifiable through both the Finder and the QuickTime Conferencing Browser component.



The AppleTalk Catalog gives the user direct access to QuickTime Conferencing entities that are available on the network. Via the QuickTime Conferencing Browser component, a user is capable of dynamically searching the network for a QuickTime Conferencing service, adding the service to a Personal Catalog, or to simply request a connection with the selected service.



The preferred Personal Catalog, which is typically accessible through the Apple Menu, plays a very important role in the PowerTalk Browser component.

For example, the preferred Personal Catalog is the default catalog that is opened by the Browser component. This is the "address book" for QuickTime Conferencing applications. Any QuickTime Conferencing information card that is placed in the preferred Personal Catalog via the Finder will also appear when the Browser component is used. In a similar manner, a QuickTime Conferencing information card that is placed in the preferred Personal Catalog via the Browser component will also appear when the Finder is used.



In addition to the Personal and AppleTalk Catalogs, the QuickTime Conferencing Browser component can use any catalog published by a PowerShare server or alternate catalog. Just as with the AppleTalk Catalog, the user is capable of searching for QuickTime Conferencing services, adding the registered service to the Personal Catalog, or simply requesting a connection onto that service through the Browser component.



While in the Finder, it is possible to search for user information cards via the "Find in Catalog" typically located in the Apple Menu. The user can specify what catalog(s) to search, and for specific user names.

Mailbox

The PowerTalk Mailbox, located on the desktop, is the place where all correspondence that is sent and received is located. With the assistance of user information cards, the Mailbox enables users to exchange QuickTime Conferencing information cards effortlessly. For example, a user drags a QuickTime Conferencing card onto a user card in order to send the QuickTime Conferencing card to another person. On the receiving end, cards that arrive in the PowerTalk Mailbox are simply dragged onto the Personal Catalog, where they become part of the address book available to the Browser component and end user.

PowerTalk Key Chain

The PowerTalk Browser component offers security services with the aid of the PowerTalk Key Chain. When the application invokes the PowerTalk Browser, the component checks to see if the Key Chain is unlocked. If the Key Chain is locked, the Browser component requests that the user enter a valid password before the Browser is made available to the user. This prevents from unauthorized access to QuickTime Conferencing services.

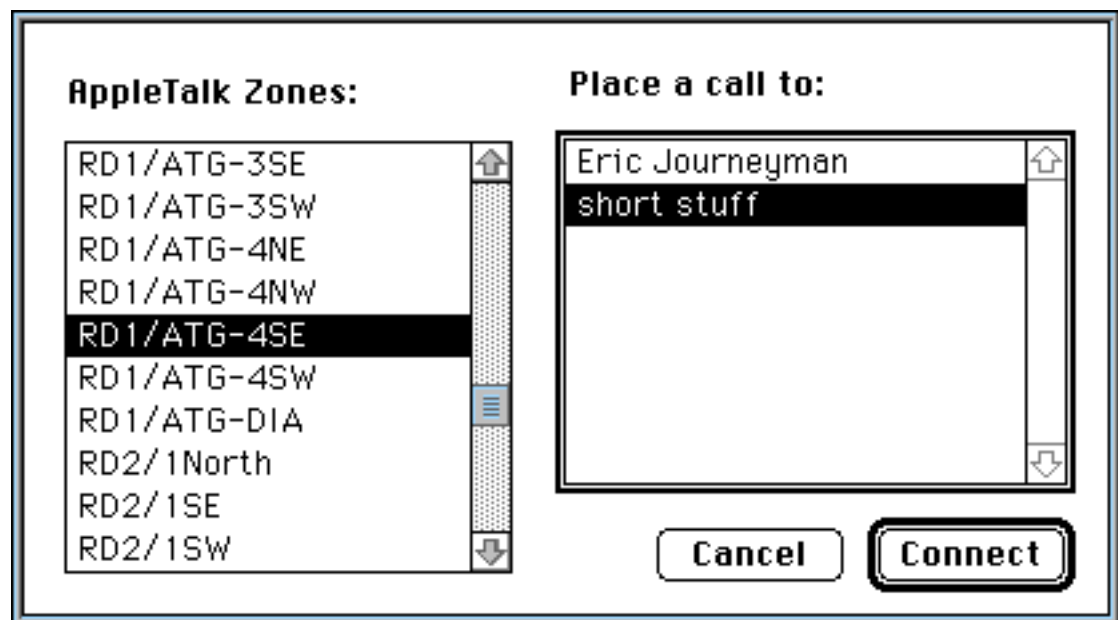
Non-PowerTalk Browsers

PowerTalk usage is optional. Without PowerTalk users do not have access to various PowerTalk features, including the business cards, address book features, and modeless browser. Nevertheless, QuickTime Conferencing provides modal AppleTalk, TCP/IP, and ISDN browsers. Note: PowerTalk users may have access to the non-PowerTalk browsers. It is suggested to display the nonPowerTalk browsers when a user Option-clicks on a menu item when attempting a connection.

Chooser Browser

A Chooser browser has been provided for non-PowerTalk users who wish to connect via AppleTalk. Like the chooser, this browser is dynamic. Only “live” users with the software up and running, and connected to the AppleTalk network will be displayed in the dialog. Once selecting a zone to find a party to connect to, and choosing the party in the desired AppleTalk zone, the user can click the “Connect” button to place a call (or to tune in to a broadcast.).

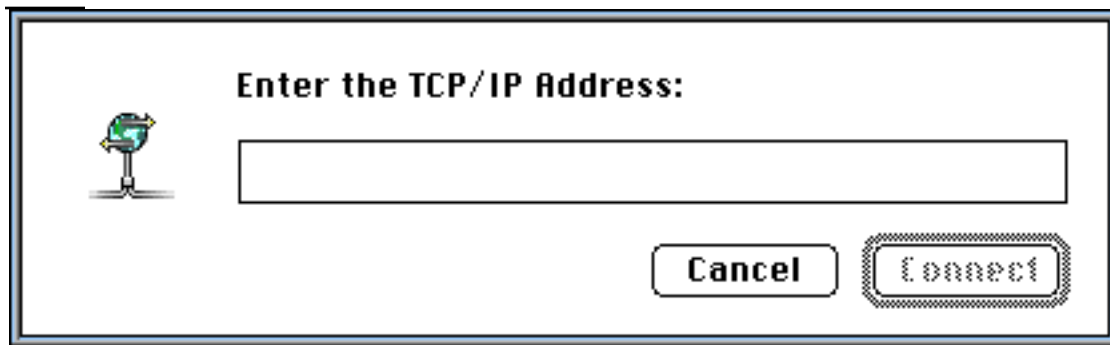
Figure 8 Chooser Browser



TCP/IP Browser

A TCP/IP browser has been provided for non-PowerTalk users who wish to connect via TCP/IP. After typing in the TCP/IP address, the user can click the “Connect” button to place a call (or to tune in to a broadcast.).

Figure 8 TCP/IP Browser

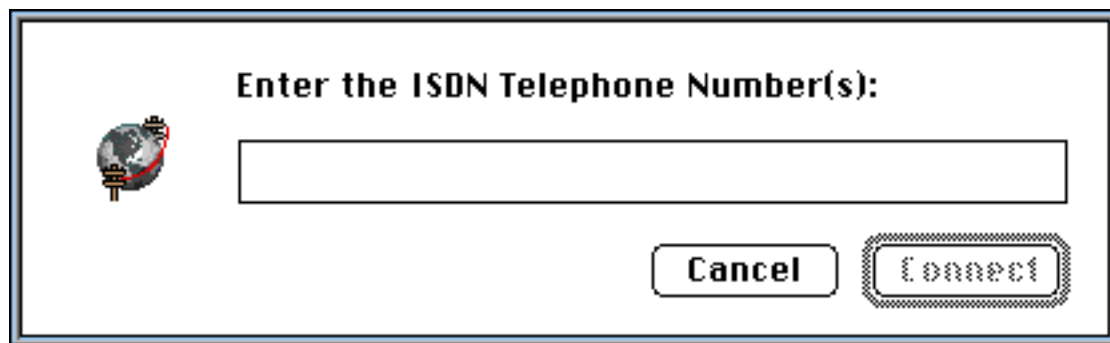


A dialog box titled "Enter the TCP/IP Address:". On the left is an icon of a computer monitor with a globe on the screen. To the right of the icon is a large, empty rectangular text input field. Below the input field are two buttons: "Cancel" and "Connect". The "Connect" button is highlighted with a dotted border.

ISDN Browser

An ISDN browser is available for non-PowerTalk users who wish to connect via ISDN. After typing in the ISDN number(s), the user can click the "Connect" button to place a call (or to tune in to a broadcast).

Figure 9 ISDN Browser



A dialog box titled "Enter the ISDN Telephone Number(s):". On the left is an icon of a globe with a telephone handset. To the right of the icon is a large, empty rectangular text input field. Below the input field are two buttons: "Cancel" and "Connect". The "Connect" button is highlighted with a dotted border.

Document Version

Version 1.0.1f2

Credits

Document by Lili Cheng & Dean Blackketter

Important Note

The content of this document is of a preliminary nature, and is subject to change without notice.

This document and the software described in it are copyrighted, with all rights reserved. Under the copyright laws, this document or the software may not be copied, in whole or part, without written consent of Apple, except in the normal use of the software or to make a backup copy of the software. The same proprietary and copyright notices must be affixed to any permitted copies as were affixed to the original. Under the law, copying includes translating into another language or format.

The Apple logo, QuickTime, PowerTalk, and QuickTime Conferencing are registered trademarks of Apple Computer, Inc.