

Windows NT 4.0 Off-Campus Connection

Version 1.0

James Madison University

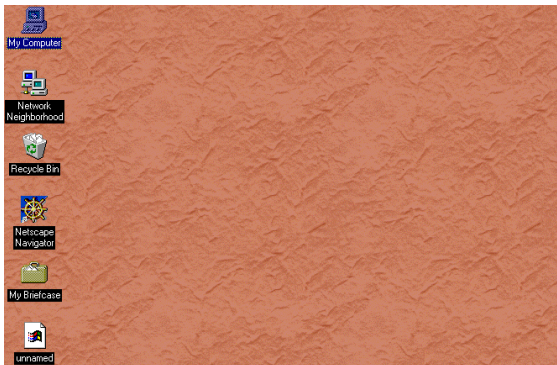


Figure 1

Figure 1. The Desktop Window

Double-click the **My Computer** icon on the desktop

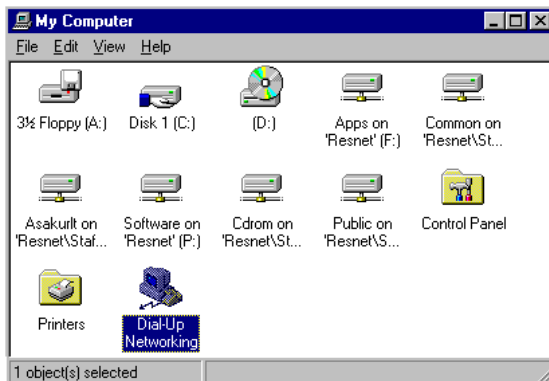


Figure 2

Figure 2. The My Computer Window

Double-click **Dial-Up Networking**. Proceed to **Step 5** if you already have your modem installed or Remote Access software installed.



Figure 3

Figure 3. The Dial-Up Networking Window

You will need your Windows NT CD-ROM to install the dial-up networking software. Click **Install**.

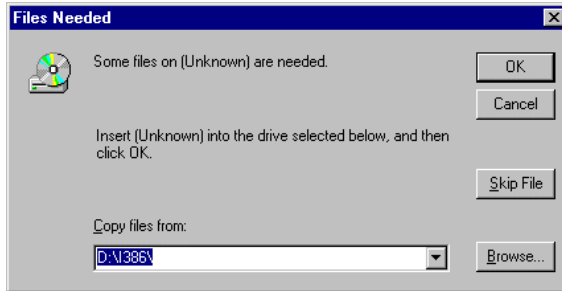


Figure 3a

Figure 3a. Location of files

Enter the location of your CD-ROM drive and the directory 'i386'. For example if your CD-ROM drive is D, you would enter 'd:\i386'

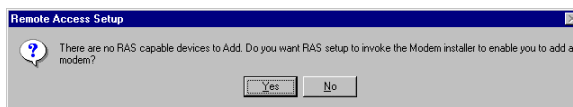


Figure 3b

Figure 3b. Modem Setup

You will only get this message if a modem has not been setup on your computer. Click **Yes**

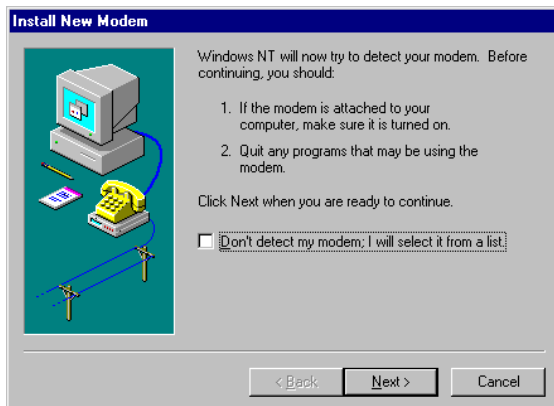


Figure 3c

Figure 3c. Choosing a new modem

Leave the box ***"Don't detect my modem; I will select from a list"*** unchecked and click **Next** to let Windows NT to search for your modem. If you have a driver disk for your modem or want to select from a list then go to the **Troubleshooting section**

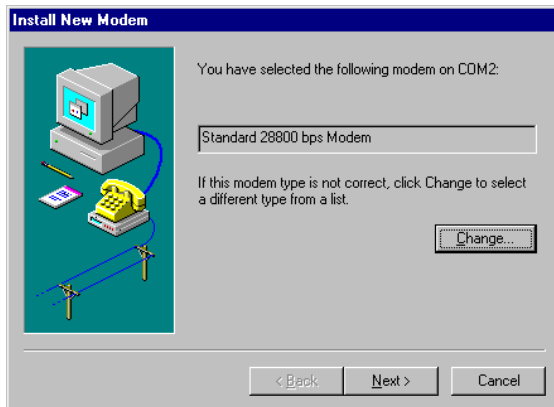


Figure 3d

Figure 3d. Installing the modem

The following window should display your modem. Click **Next**.

Click **Change** if you modem listed is incorrect and go to the **Troubleshooting Section**.

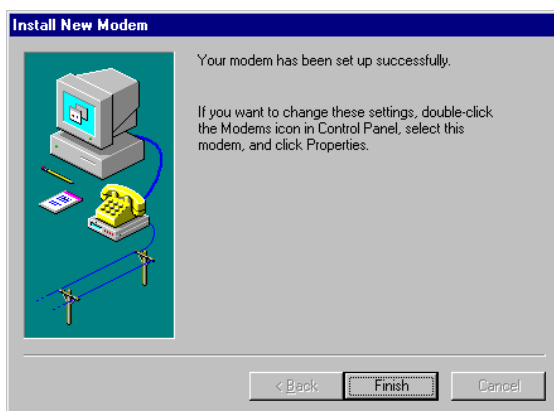


Figure 3e

Figure 3e. Save modem settings

Your modem has been successfully setup. Click **Finish** to complete the modem installation

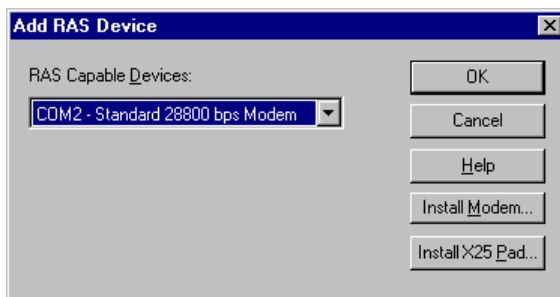


Figure 3f

Figure 3f. Adding a RAS device

Select your modem and click **OK**

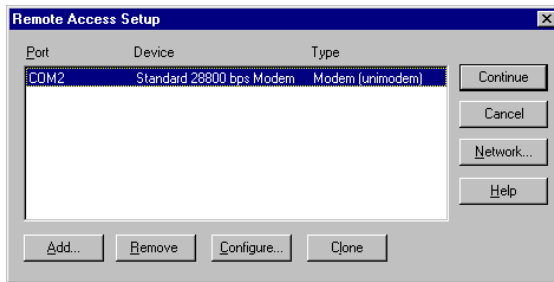


Figure 3g

Figure 3g. Selecting a Modem
Select your modem and click ***Continue***

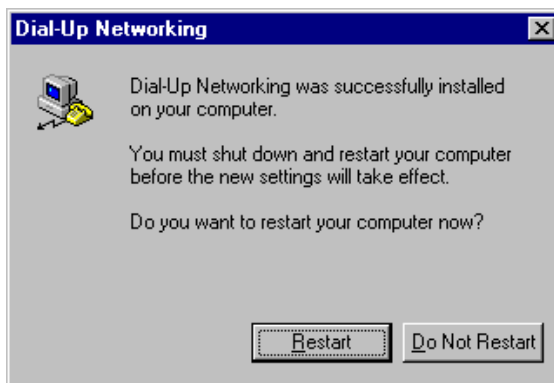


Figure 3h

Figure 3h. Restarting the computer
Remote Access and Dial-Up Networking has now been successfully installed. Click ***Restart***. Redo Step 1 and 2, then skip to Step 5.

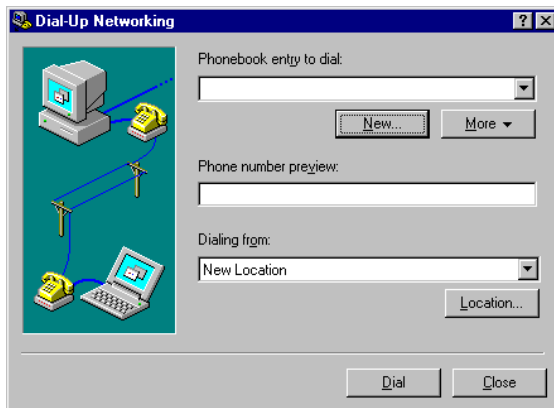


Figure 5

Figure 5. Click New



Figure 5a

Figure 5a. New Phonebook entry
Type 'CampusNet' in the field provided. Click **Next**

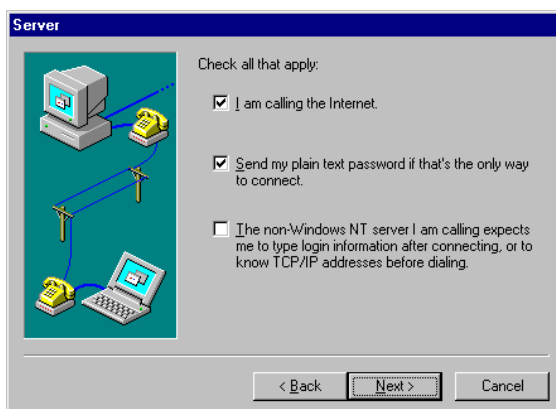


Figure 5b

Figure 5b. Server Settings

Check ***"I am calling the Internet"***, and ***"Send plain text password if that's the only way to connect"*** by clicking on the boxes.

Make sure that the third option remains unchecked.

Click **Next**

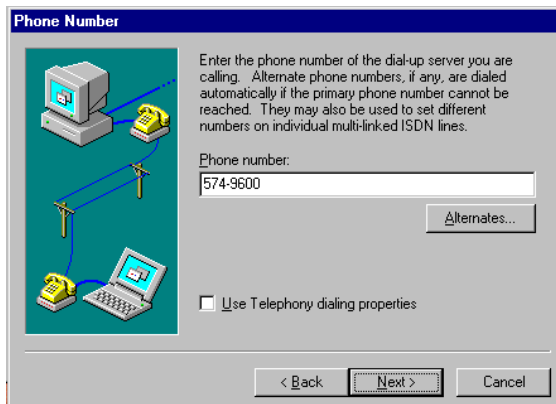


Figure 5c

Figure 5c. Setup the Phone number

The dial-up number for CampusLink is 574-9600. Enter this into the field provided. Click **Next**

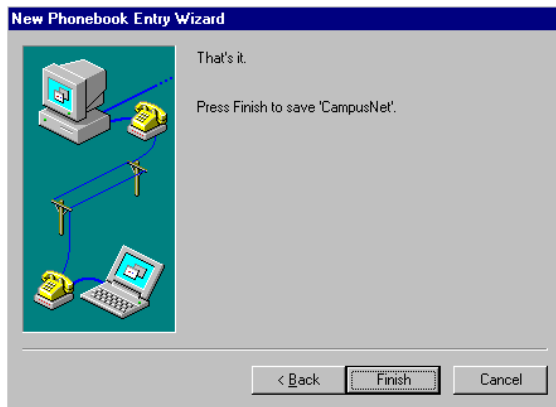


Figure 5d

Figure 5d. Save Phonebook Entry

Click **Finish** to save your new Phonebook entry.

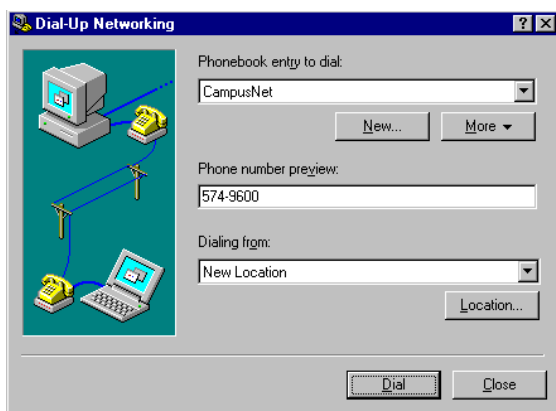


Figure 6

Figure 6. Dial-Up

The standard Dial-Up Networking dialog box will come up. This is the window that will appear each time you open **Dial-Up Networking** from now on

Click **Dial**

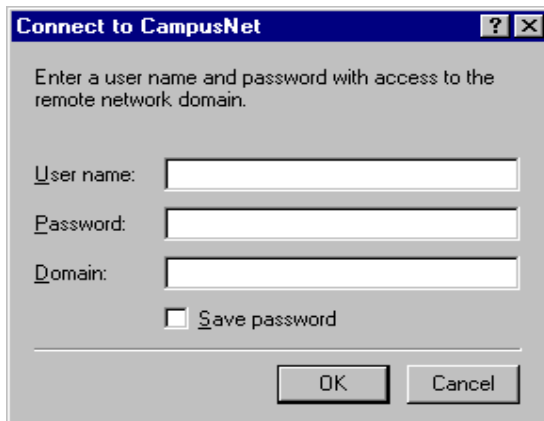


Figure 7

Figure 7. Connecting to CampusNet

Enter your **userid** and **password** in the corresponding fields. You do not need to enter anything into the **Domain** field. Click **OK** to establish your connection.