

# Contents of the Copyshop 2000 Help

## Welcome to Copyshop 2000

### Subjects of this manual

1. [Setting up](#) describes how to set up Copyshop 2000 and how to adapt it to your scanner.
2. [Principles of operation](#) explains the basic operation of Copyshop 2000
3. [Reference](#) describes all the menu commands and keyboard shortcuts for Copyshop 2000
4. [Licence conditions](#)
5. [FAQ](#) contains answers to frequently asked questions and tips on how to deal with problems encountered with Copyshop 2000.
6. [Tested hardware](#)
7. [Order form](#)

**We wish to express our thanks to the following companies for supplying testing devices**

- Plustek Electronics GmbH
- Umax Systems GmbH
- Epson Deutschland GmbH

---

**Copyright 1998 by KlickSoft Computer GmbH**

### **Technical after-sales service:**

e-mail: [support@klicksoft.com](mailto:support@klicksoft.com)

<http://www.klicksoft.com>

free of charge

## Setting up

### **Introduction - It is essential to read this:**

Copyshop 2000 turns your scanner and printer into a proper "Copyshop". Copyshop 2000 supports all scanners working with TWAIN standard. The TWAIN standard, however, is a very open standard which provides a wide scope for the efficiency of an individual device. According to the TWAIN standard there is a wide range of functions, but they do not have to be supported by every device.

Normally scanners are operated via a window (TWAIN shell) located in the driver for your scanner. This window is always displayed when, for example, you want to scan a picture from a drawing program. In this window you can scan a previews, define a frame and a lot more besides. Copyshop 2000 can work together with this TWAIN shell.

But Copyshop 2000 only develops to its full efficiency if it does without this TWAIN shell and drives the various functions of your scanner directly. In this way you can make all adjustments directly in Copyshop 2000.

Your scanner is then driven directly via an interface specified in the TWAIN standard. Unfortunately it is the case, however, that some scanners support this interface only inadequately or defectively. In such a case you will have to help your scanner along and undertake some settings manually. We will say more about this later. We wish to stress, however, that this is not a problem of Copyshop 2000, but a pure quality problem related to the driver supplied.

Work through the following steps in the order given and check whether the capabilities of your scanner are correctly recognised.

### **1. The physical scanning field**

Every scanner has an area in which the masters can be scanned. In the case of flat-bed scanners this is as a maximum the size of the pane for the master. Copyshop attempts to establish the size of this area via the TWAIN standard. But we know of scanners which indicate no size or give the incorrect size. After starting Copyshop for the first time check whether the area shown under "Scanner" conforms to the maximum area of your scanner.

### **2. The concept of Copyshop 2000**

Once Copyshop 2000 has been started the following display appears.

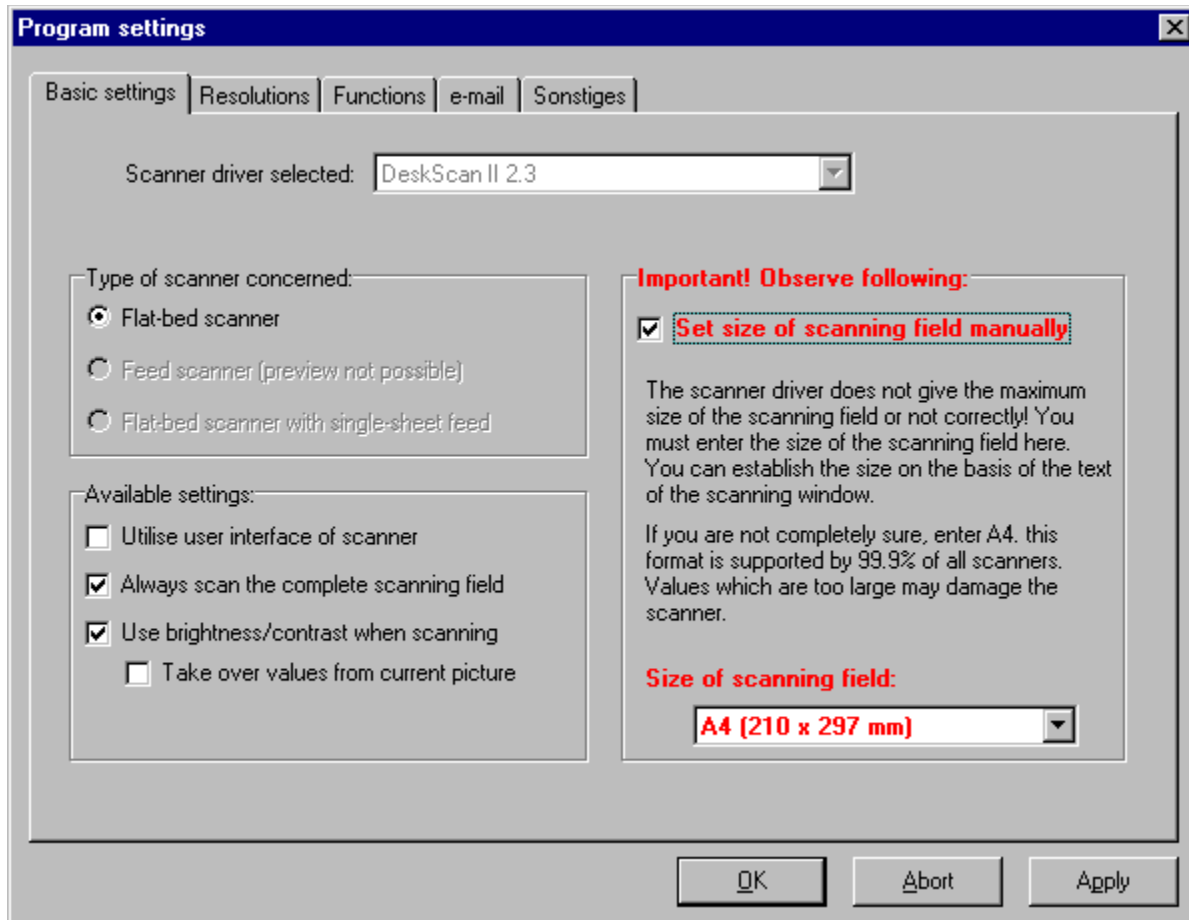


The most important area with Copyshop is the central area with the pages Scanner and Copy. The page Scanner presents a view which conforms with the master located on the scanner. To update the view of the scanner there is the preview switch. The Copy page shows a preview of the printout. You can place individual elements on this page, such as text markers, masks and pictures. The presentation conforms to the subsequent print result. In the areas to the left and right you can undertake various settings, such as changing the number and size of the copies and much more. The first thing you should do is to select the menu item File and then the item Settings. In this dialogue you can undertake all major settings for Copyshop 2000.



### 3. Basic settings

Here you will find a number of fundamental setting possibilities for your scanner. The first thing you should do is, as already mentioned, to set the physical scanning field. If your scanner needs to be corrected, activate this setting facility via the marking field **Set Size of Scanning Field Manually** and select the actual size under Size of Scanning Field.



You should check whether it has been possible to correctly determine the scanner type. In our sample display the scanner concerned can only be of the flat-bed type. If an automatic document feed has been recognised, the scanner concerned may be of the feed type which draws your paper pages, like a fax machine, past the scanning element, or of the flat-bed type, equipped with an additional paper feed.

As soon as an automatic document feed has been recognised, there is the additional facility in the main window of Copyshop 2000 for setting the document feed to specific needs. But some drivers indicate a paper feed, even though the scanner does not have one. In such a case you should set the option Flat-bed Scanner manually.

With the option **Utilise the User Interface of the Scanner**, you can make Copyshop 2000 utilise the scanner's user interface to scan pages. You should only choose this option if the scanner does not permit control of the individual functions through Copyshop 2000. If problems arise repeatedly when scanning with Copyshop 2000, you must activate this function. But before doing this you should try to use the other setting possibilities to adapt Copyshop 2000 specifically to your scanner. It helps in particular to switch on the option **Always Scan the Whole Scanning Field**. With some older machines Copyshop 2000 may not set a frame for the area to be scanned. If this option has been activated, the entire page will be scanned and the area you selected will be cut out subsequently. The scanning operation will, of course, then last a little longer. But there is another reason to activate this function. If you always scan the whole scanning field, you can also shift the selector frame after the first scan.

Copyshop 2000 offers the possibility of making various colour settings for your picture. The brightness and contrast should already be set for the scanning to achieve the best possible picture. The option **Use Brightness/Contrast During Scanning** is not supported by all scanners, however. If you activate this option and find out that there is nothing different about the picture you scan despite modified brightness and contrast settings, you should deactivate this option again because it is not possible with your scanner.

Even if your scanner's driver offers such setting possibilities it is often the case, as with Copyshop, that the brightness and contrast set are only applied by computation to the picture after scanning. Only with more expensive scanners are such settings taken into account directly during scanning. This option is therefore deactivated as

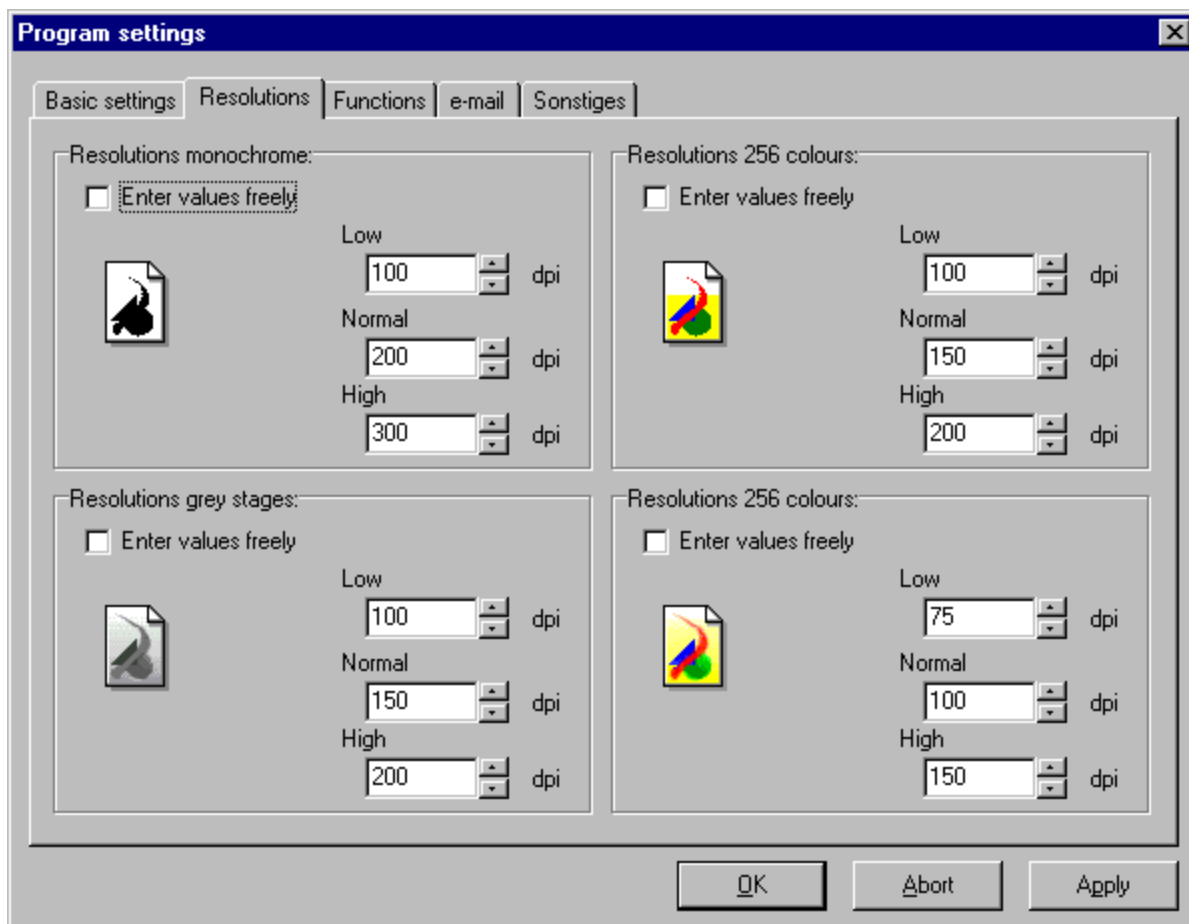
standard and Copyshop 2000 only performs the desired adjustments after the scanning operation.

The option **Take Values from Current Picture** selects whether you would like to take over the colour values for a new picture for scanning from the picture currently displayed. If this option has been deactivated the colour values set will always be taken over by the preview picture.

## 4. Resolutions

On this page you can fix the resolutions with which certain picture types can be scanned. Furthermore you can rectify certain problems arising with your scanner. **Important:** The Resolutions page can only be selected if you have deactivated the option Utilise User Interface of Scanner on the Basic Settings page.

Two other problems may arise when you are enquiring about the capabilities of your scanner.



- a) Your scanner does not give all the possible colour depths back to Copyshop 2000. It may therefore arise, for example, that Copyshop 2000 will deactivate a scanner's setting facilities for black-and-white scanning. You can rectify these problems by activating the option **Enter Values Freely**. Copyshop 2000 will then try to perform a scan in the colour depth selected, even though the driver actually indicates that this is not possible.

**Important!** In the case of older Mustek scanners you must set this option for all colour depths because the scanners do not feed back any colour depth information to Copyshop 2000.

- b) The scanner does not give back any settable range (e.g. 30 - 600 dpi) for the resolutions, but a list of the possible resolutions (e.g. 144, 244, 88, 188 etc.). Some scanners only give back an incomplete list, however.

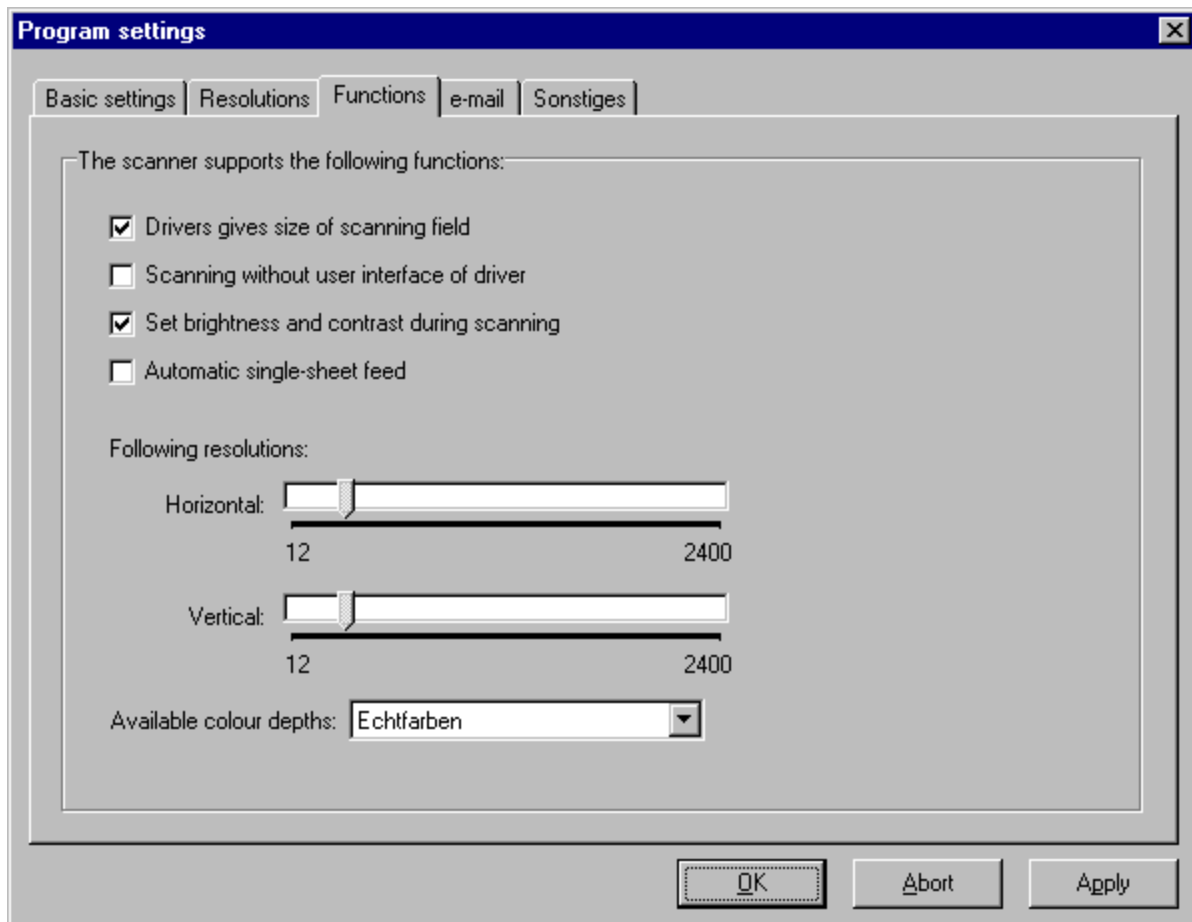
The Mustek 600 EP gives back 244 dpi as the maximum value in this list, although 9600 dpi should actually be possible with the scanner. You should also choose the option **Enter Values Freely** in such a case. You can then enter the dpi values freely. Before you can exit the dialogue, Copyshop automatically checks whether the scanner accepts the values you have entered and whether it is possible gives an error message.

In the fields Low, Normal and High you can indicate the desired resolution in dpi (dots per inch). Furthermore you can also enter the dpi resolution for the preview if you have selected free definition.

In our display printout you can see that the setting possibilities for 256 colours are deactivated. In our case the scanner does not support scans with 256 colours. Since nearly 99% of all scanners do not support this colour depth, Copyshop 2000 generally employs a trick here. Even if this colour depth is not supported, the option is activated in the main window. Copyshop 2000 then performs a scan with 16.8 million colours and converts the picture directly into 256 colours after the scan.

## 5. Functions

This page serves diagnostic purposes in particular and it gives back some important values for your scanner. You should indicate these values if you have any questions for technical after-sales service.



## 6. E-mail

Copyshop 2000 offers you the opportunity to send your copies by e-mail. To do this you must use this dialogue to enter the most important information with respect to your e-mail server. Copyshop 2000 supports the SMTP protocol, which is supported by nearly all major on-line services and providers. The only provider we know of

which does not support this protocol is AOL (America Online). In this case you must have access to another server via an e-mail address. For example, we can recommend [www.geocities.com](http://www.geocities.com) (English) or [www.eurobox.de](http://www.eurobox.de) (German). Please note that the size of the mail transmitted is limited with some providers. For time reasons as well you should ensure that the size of your e-mail does not exceed 500 KByte to 1 MByte.

**Program settings**

Basic settings | Resolutions | Functions | **e-mail** | Sonstiges

Server setup:

User name for mail server: bpolenske

Server for outgoing mail [SMTP]: mail.geocities.com

Server for incoming mail: mail.geocities.com

Passwor: xxxxxxxxxxxx

Personal information and settings:

Name: bpolenske

E-mail address: bpolenske@klicksoft.com

OK Abort Apply

Enter the following values in the boxes:

**User Name for the Mail Server:** Enter the name you use to log on to your mail server. With T-online, for example, this name is the same as your telephone number or the alias you have chosen.

**Server for Outgoing Mail (SMTP):** Enter the name of the mail server used. The name is mostly identical with the server name and includes a preceding mail (e.g. mail.provider.com).

**Server for Incoming Mail:** This box is not in use at present. In the near future Copyshop 2000 will also be able to receive copying orders automatically.

**Code for Log-on:** Some e-mail servers also need the code work to send e-mails. Here you should enter the code word you use. If you do not enter a code word here, it will be asked for every time you send an e-mail.

**Name:** Here you should give your complete name, written in full. This name will be used as the sender for e-mails.

**E-mail Address:** Here you should give your complete e-mail address. This will also be shown on your e-mails.

## 7. Miscellaneous

Here you can set the format for the date on a stamp.



## Principles of operation

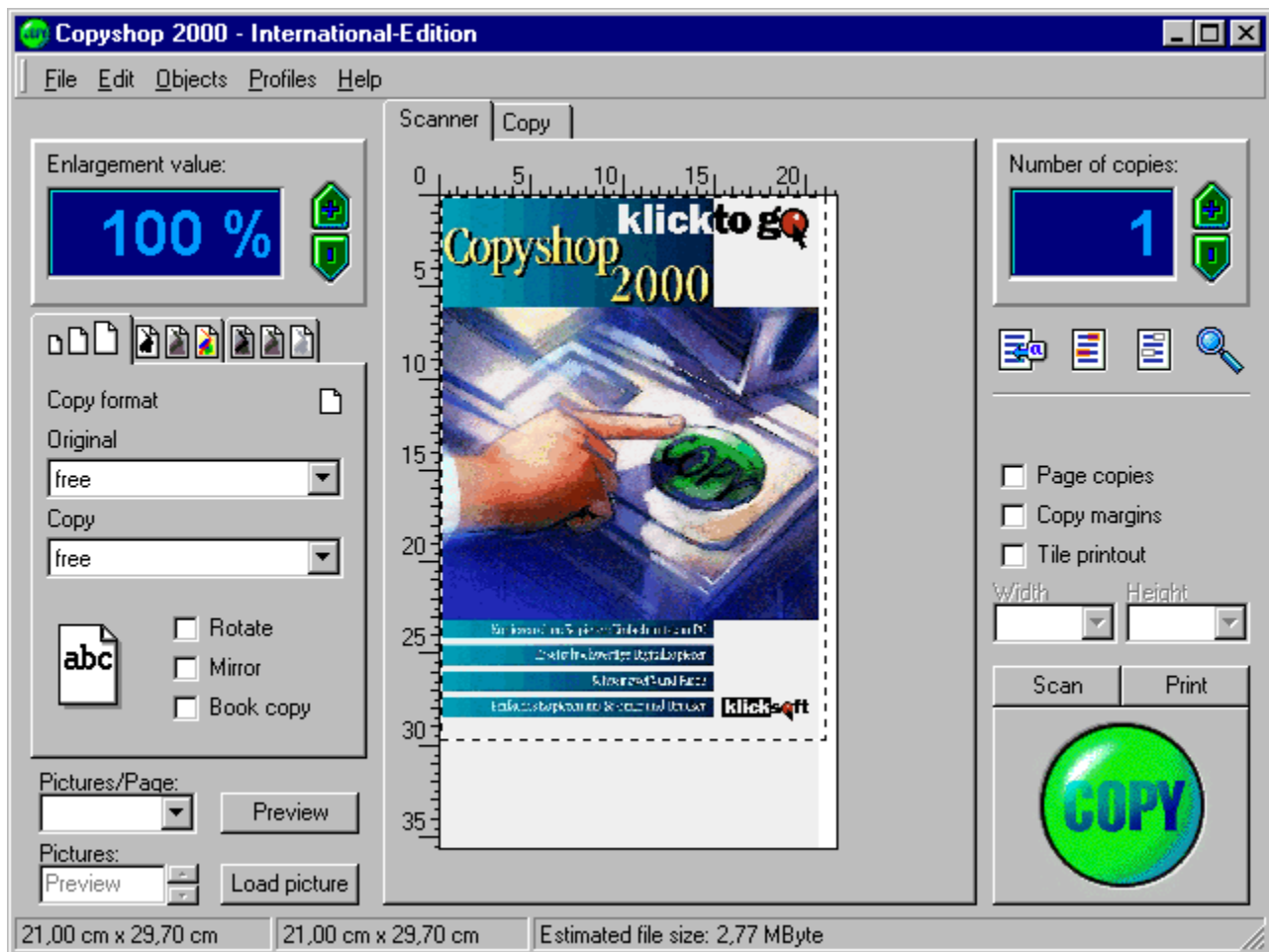
**In this section you will learn how to work with Copyshop.**

- Your first copy with Copyshop

As you will see, it's child's play working with Copyshop. To make your first copy with Copyshop proceed as follows:

1. Switch your scanner on
2. Switch your printer on
3. Start Copyshop
4. Place the master on your scanner
5. Click the Copy button
6. Remove the copy from your printer

### Overview



**These subjects will be dealt with in the following:**

[Copying formats](#)

**Copying quality**

**Picture settings**

**Scanning a number of pages and number of copies**

**Editing copies**

**Book copies**

**Tile print**

**Profiles and copying orders**

**e-mail**

## Reference

**In this section you will find an list of all menu commands and keyboard shortcuts for Copyshop 2000.**

### File

**New Copy:** Deletes all pictures and scans from the memory and thus resets Copyshop.

**Load Copy Order...:** Loads a stored copy with all parameters, such as magnification, number of copies etc.

**Store Copy Order...:** Stores the current copy with all parameters, such as magnification, number of copies etc.

**Select Scanner...:** This enables you to choose a scanner.

**Scan Preview:** Conducts a preview scan.

**Print...:** Prints the copy with the current print options and copy settings.

**Printer Setting...:** You can use this to set the print options.

**Send Copy as E-mail:** Sends your copy as an e-mail.

**End:** With this command you can end Copyshop 2000.

### Edit

**Copy:** Copies the active picture into the temporary memory.

**Insert:** Inserts the content of the temporary memory as a new picture in the picture list.

**Load Picture:** Loads a graphic file.

**Save Picture:** Saves the current picture or current scan as a graphic file.

**Delete Current Picture:** Deletes the picture displayed from the memory and picture list.

### Objects

**Insert Text...:** Inserts a text in the copy.

**Insert Stamp:** Inserts a stamp in the copy.

**Insert Text Marker:** With this you can highlight parts of your copy as though using a text marker.

**Insert Mask:** With this you can mask parts of your copy.

**Filler Colour:** Changes the filler colour of the marked object.

**Frame:** Changes the style of frame for the marked object.

**Edit text:** Activates the Edit text dialogue.

**Font...:** With this you can change the font of a marked text object.

**Align:** Determines the alignment of the marked text object.

**Delete object:** Deletes the marked object.

### Profiles

**Edit Profiles:** With this you can store your current values as a profile or delete existing profiles.

## **Help**

**Content:** Shows the content of the Copyshop 2000 Help facility.

**Information on Copyshop 2.0 on the Internet:** Calls up the new features of the KlickSoft Computer GmbH Internet page. Here you will find all the new features of Copyshop 2000.

**Registration by Internet:** With this you can register as a user on-line by e-mail.

**Info:** Shows information on the version, Copyright and user.

## License conditions

Copyshop 2000 - International  
Copyright (C) 1996-1997 by KlickSoft Computer GmbH, Germany  
All Rights Reserved

For ordering information, see the file ORDER.TXT.

### License Agreement

You should carefully read the following terms and conditions before using this software. Unless you have a different license agreement signed by KlickSoft Computer GmbH Germany, your use of this software indicates your acceptance of this license agreement and warranty.

### Registered Version

One registered copy of Copyshop 2000 may either be used by a single person who uses the software personally on one or more computers, or installed on a single workstation used nonsimultaneously by multiple people, but not both.

You may access the registered version of Copyshop 2000 through a network, provided that you have obtained individual licenses for the software covering all workstations that will access the software through the network. For instance, if 8 different workstations will access Copyshop 2000 on the network, each workstation must have its own Copyshop 2000 license, regardless of whether they use Copyshop 2000 at different times or concurrently.

### Governing Law

This agreement shall be governed by the laws of the Federal Republic of Germany and the European Community.

### Disclaimer of Warranty

THIS SOFTWARE AND THE ACCOMPANYING FILES ARE SOLD "AS IS" AND WITHOUT WARRANTIES AS TO PERFORMANCE OR MERCHANTABILITY OR ANY OTHER WARRANTIES WHETHER EXPRESSED OR IMPLIED.

Because of the various hardware and software environments into which Copyshop 2000 may be put, NO WARRANTY OF FITNESS FOR A PARTICULAR PURPOSE IS OFFERED.

Good data processing procedure dictates that any program be thoroughly tested with non-critical data before relying on it. The user must assume the entire risk of using the program. ANY LIABILITY OF THE SELLER WILL BE LIMITED EXCLUSIVELY TO PRODUCT REPLACEMENT OR REFUND OF PURCHASE PRICE.

### Evaluation Version

#### Evaluation and Registration

This is not free software. Subject to the terms below, you are hereby licensed to use this software for evaluation purposes without charge for a period of 21 days. If you use this software after the 21 day evaluation period a registration fee of \$29.95 is required. For further payment details see ORDER.TXT. Credit card ordering and quantity discounts are available, as described in the Order Form. When payment is received you will be sent a

licence code for the latest version of Copyshop 2000.

Unregistered use of Copyshop 2000 after the 21-day evaluation period is in violation of German, U.S. and international copyright laws.

**Distribution**

Provided that you verify that you are distributing the evaluation version you are hereby licensed to make as many copies of the evaluation version of this software and documentation as you wish; give exact copies of the original evaluation version to anyone; and distribute the evaluation version of the software and documentation in its unmodified form via electronic means. There is no charge for any of the above.

You are specifically prohibited from charging, or requesting donations, for any such copies, however made; and from distributing the software and/or documentation with other products (commercial or otherwise) without prior written permission.

## FAQ

**F:** I get a message telling me that my scanner does not support the desired document type and/or the desired number of colours or resolution.

**A:** Some scanners can only scan with certain, permanently specified quality settings (600, 300, 150, 75 dpi). For example, if you choose 30 dpi under "Enter Values Freely", the driver will scan with the maximum possible quality. This will of course produce particularly large pictures. Many scanners ( e.g. Mustek ) cannot scan with 256 colours. The scanner will then only produce a picture with 256 grey stages. The preview is therefore always in grey stages. Read also the chapter [Setting Up](#).

**F:** Why is the system blocked when a high-resolution colour graphic is being printed?

**A:** This is due to the quality specifications selected. A DIN A4 picture in real colours (16.8 million colours) and 300 dpi will hopelessly overtax most computers and give rise to scanning/printing times of between 1 and 2 hours. In the case of colour copies the scanning quality "low" is normally completely sufficient. Only select a high resolution if you want to scan small areas and print them with a high magnification.

If you only have a monochrome printer, a scan in grey stages is fully sufficient. In the case of inkjet printers you should select a maximum of 150 dpi (normal). With laser printers it is sensible to scan with the high quality setting.

If your computer no longer reacts to your entries during scanning or printing, this does not necessarily mean that the computer has crashed. Many scanner drivers block the system during scanning. Even the mouse arrow may not move during the scanning operation.

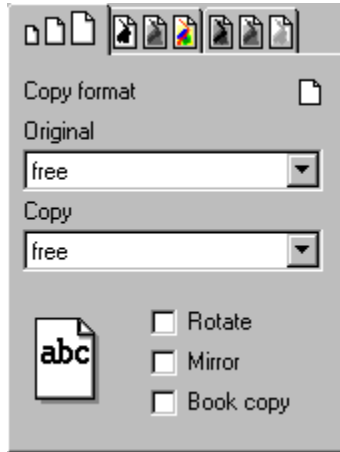
Copyshop passes on the printouts to the printer driver of Windows. The latter initially stores the printout in a file and passes this file on to the printer after the end of the Copyshop printing operation. With large pictures in particular this may mean that the computer will work very slowly after the printout. The best thing to do is not to make any further user entries until the printer has finished printing the page.

**F:** Where can I find the current Twain driver for my scanner?

**A:** On our Internet pages you will find references to the pages of the major scanner manufacturers under "Service/Support Links".

## Copying formats

You can set paper and copying formats on the dialogue page "Copying Format".



Here you can specify standard sizes for the original and copy page.

If, for example, you have an A4 original and want to print it out in A5, simply select the option "A4" under Original and "A5" under Copy. The size of the selection frame will then be adapted immediately.

The size of the selection frame cannot be changed manually now, until the settings for "Original" and "Copy" are on free. But you can shift the areas selected on the dialogue pages Scanner and Copy.

When selecting the format of the original and the copy, note that it is only possible to combine formats of the same format series. A format series is formed by a constant page ratio (width to height). You will thus obtain the next format of the DIN A series by halving the preceding format, for example.

**Important!** If you have selected the option free, you can set the width and height of the selection frame on the Scanner page independently of one another. But if you have set one of the specified formats, such as A4, the selection frame can only be enlarged or reduced in such a way that the page ratio is preserved. On the Copy page the selection frame can in general only be changed while maintaining the page ratio.

### Other options

#### **Rotation**

With this option you can rotate the copy 90°. At the same time the size of the copy will be adapted as necessary.

#### **Mirroring**

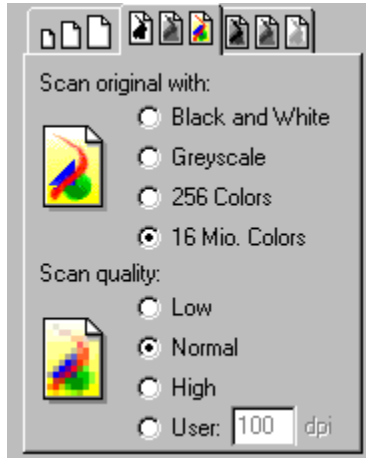
The copy is mirrored.

#### **Book Copy**



## Copy quality

You can make quality settings on this dialogue page.

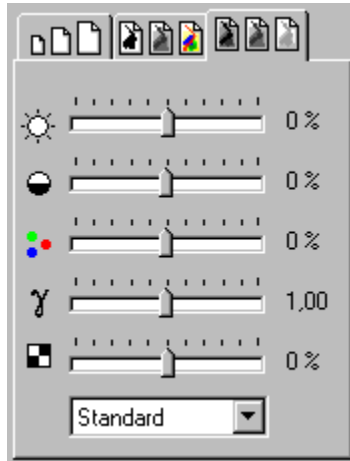


A DIN A4 picture in real colours (16.8 million colours) and 300 dpi will hopelessly overtax most computers and give rise to scanning/printing times of between 1 and 2 hours. with colour copies the scanning quality Low is normally fully sufficient. You should then only select a high resolution if you want to scan small areas and print them out with high magnification. If you only have a monochrome printer a scan in grey stages will be fully sufficient. With inkjet printers you should select a maximum of 150 dpi (normal). In the case of laser printers it makes sense to scan with high quality.

Note that the indication on the Copy page depend on the printer you have installed. If you scan in colour, but only have a monochrome printer, Copyshop will scan with the colour setting selected, but it will only indicate the copy in grey stages.

## Picture Settings

On this dialogue page you can set the brightness, contrast and colour saturation of the picture and make a gamma correction. You can monitor the changes in the Copy window.



Especially practical: for light and dark masters, newspaper and recycled paper the settings are predefined and you can click them in the selection box.

## Edit copies

One of the outstanding new features of Copyshop 2000 is undoubtedly the facility for re-editing copies. You can insert text, mask parts of a copy, highlight parts of a text with text markers or put stamps on a copy.

### How to add text to a copy

Click the Insert Text button and select Insert text or select this command in the menu Objects. As an alternative you can also use the key combination Ctrl+T or the context menu on the right hand mouse button.

In the Text dialogue you can now enter your desired text. Click OK in order to insert the text in the copy.

### How to insert a stamp

Copyshop has a series of predefined useful stamps, such as "Confidential", "Received" and many others.

Click the Insert Text button and select the desired stamp.

The stamp is now placed in the top left hand corner of the copy window. Of course, you can pull the stamp to any other point of your copy, enlarge it or reduce it.

### How to change the attributes of texts and stamps

Mark the text or stamp object.

In the Objects menu you will find the commands for editing the text, and for changing the font, the filler colour and the frame.

### How to save your own text as a stamp

Insert a text object in the copy and provide it with the attributes you require (font, background colour etc.).

In the menu Objects under the item Insert Stamp save the command Object as Stamp..

Enter a name for your stamp and click OK.

## Book copy

If you want to make copies from books your will find this function very helpful.

- Lay the book in the middle of the scanner and activate book copy.
- Then perform a preview scan by clicking the Preview button. You can now adapt the selection frame for the right and left book pages.
- When you now enter the value 1 for Pictures/Page, the two book pages will be printed on two separate sheets.

## Tile print

With the tile print function of Copyshop it is possible to print posters up to a format of DIN A0 ( 84.1 x 118.9 cm) and above.

The maximum area available for this is determined by the current printer parameters.

If you have set the paper format to A4 with the printer set-up and you select the value 6 under tile print width and height, your copy printout would be distributed over 36 DIN A4 pages, equivalent to an area of 126 x 178.2 cm. On a DIN A3 printer you would obtain 178.2 x 252 cm, and on a DIN A2 printer even 252 x 356.4 cm.

## Profiles and copy orders

With profiles and copy orders it is possible to save the parameters you set and use them repeatedly.

### Profiles

Set all the parameters important for you, such as resolution, paper and copy format, number of copies etc. as required.

In the Profiles menu select the command Edit/Delete Profiles.

Enter a name for your profile in the entry box and click Save.

Profiles saved in this way can now be used as often as you want. Simply click the desired profile in the Profiles menu.

**Tip:** You can also start Copyshop straightaway with a profile if you use the Copyshop 2000 Quickstarter from the tasks bar. For this purpose use the right hand mouse button to click the Copyshop icon in the tasks bar and then click the desired profile.

### Delete profile

If you want to delete a profile, proceed as follows:

Select the command Edit/Delete Profiles in the Profiles menu.

In the List of existing profiles mark the profile to be deleted.

Click the Delete button.

Close the dialogue by clicking the OK button.

### Rename profile

Although there is no direct facility for renaming a profile, it can be done by an small indirect route.

Select the desired profile in the Profiles menu.

Select the Edit/Delete Profiles command from the Profiles menu.

Enter the new name for your file in the entry box and click Save.

In the List of Existing Profiles click the old profile name.

Click the Delete button.

Close the dialogue by clicking the OK button.

### Copy orders

As with profiles, copy orders also store all the relevant copying parameters. In contrast to profiles, the scan is also saved.

**Advantage:** If you need additional copies of a copy order again at a later date or if you want to make changes to the copy format, you can make use of a saved copy order and you will not have to scan the document again - the original does not have to be available therefore.

### **How to save a copy order**

Set the copying parameters and perform a final scan. A preview cannot be saved as a copy order!

Select the command Save Copy Order in the menu File.

In the Save Under dialogue enter a file name and click Save.

### **How to load a copy order**

Open the menu File.

Click Load Copy Order...

Mark the desired order and click Open.

Open the menu File.

Click Load Copy Order...

Mark the desired order and hit the Del key.

In the Confirm Deletion of Files dialogue click Yes.

### **Rename copy orders**

Open the menu File.

Click Load Copy Order...

With the right hand mouse button click the desired order.

Select the command Rename from the context menu.

Enter a new file name: the file name must have the ending **.CSZ** because otherwise Copyshop will not be able to find and open this copy order.

## e-mail

A new feature of this version of Copyshop is the function for sending copies as e-mails.

**To send a copy as e-mail proceed as follows:**

Set all the copying parameters and perform a final scan. A preview cannot be sent as an e-mail!

Open the menu File.

Click Send Copy as E-mail.

In the dialogue Copyshop 2000 - Send E-mail , enter the recipient's e-mail address. Furthermore you can enter a subject and/or a message for the recipient.

Click Send.

Your copy will now be sent to the recipient as an annex to the e-mail.

If you want to send a copy to a number of recipients at the same time, simply enter the relevant e-mail addresses in the recipient entry box and separate them by a semicolon.

**Important:** The command Send Copy as E-mail is only available if you

1. performed the server set-up in the program settings on the e-mail page
- and
2. have performed a final scan.

You can find further information on server set-up in the Set-up section.



## Scanning a number of pages and number of copies

Copyshop offers you the possibility of first scanning a number of pages and then printing them out separately.

to do this, simply perform a number of scans. You can switch from one individual scan to the other using the rocker controller next to the entry box.

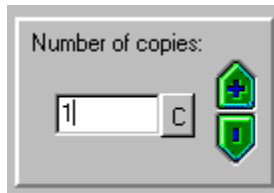
If you want to print the scans on separate pages, set the value 1 in the Pictures/Page box.

But if you want to print a number of scans on one page proceed as follows:

### How to set the number of copies



Using the rocker controller in the Copies window you can change the number of copies. If you would prefer to enter the figure manually, simply click inside the display with the left hand mouse button. The display will no change in the entry box. By clicking the button c you will reset the number of copies to 1.



### Interaction between the options Copies, Picture/Page, Pictures and Page copies

To help you understand the principle of Copyshop it is important to know how the operations Copies, Pictures/Page, Pictures and Page copies work together.

Here are two examples:

1) You have scanned a DIN A4 page with an enlargement of 50% and you want to make 2 copies.

When you have set the option Pictures/Page to 1 (standard setting), 2 pages will be printed. But if you have set Pictures/Page to 2, both copies will be printed on only one page. If, in the second case, you have activated the control box Page Copies, 2 pages will be printed again..

2) You have scanned a DIN A4 page with an enlargement of 50% and have also loaded a picture. You want to make two copies of each.

If you have set Pictures/Page to 1, you will get four printouts. The order of printouts will depend on the setting in the control box Page Copies. If you have deactivated this option, the first two printouts will contain your scan and the last two the picture you loaded. But if the Page copies options is activated, the first printout will contain your scan, the second the graphic you have loaded etc. In this case the Page Copies option serves as a sorting function.

If you have set Pictures/Page to 2, you will obtain two printouts. The effect of a deactivated Page Copies is that two copies of your scan will be printed on the first sheet and two copies of the picture you have loaded on the second sheet. But if you have deactivated Page Copies, two identical sheets will be printed, each containing a copy of your scan and the picture loaded.

## Tested Hardware

Copyshop has been tested with the following scanners:

### **AGFA**

Agfa SnapScan 1200 , Parallel Port Version

### **UMAX**

Umax Powerlook II, SCSI \*)

UMAX Atra 600S, SCSI

### **HP**

ScanJet IIc , SCSI

ScanJet 4c /T , SCSI

### **Mustek**

Mustek 600 CD, SCSI

ScanExpress 600CP , Parallel Port Version

### **Plustek**

OticPro 9636T, Parallel Port Version

OticPro 9636P, Parallel Port Version

PageReader800, Feed Scanner

### **EPSON**

GT-9500 , SCSI

GT-7000 , SCSI

### **SICOS**

SicoScan 2400 , own interface

### **RICOH**

Image Scanner IS410 , SCSI

On our Internet pages, under "Service/Support Links", you will find references to pages of the major scanner manufacturers.

\*) with SCSI devices and Adaptec 2940 card was used

**Copy Button**

With this you can start the copying operation on the basis of the current parameters for scanners and printers.  
Your master is scanned and printed immediately.

**Set Enlargement Factor**

You can change the enlargement factor using the rocker controllers.

If you would prefer to enter the value directly, click on the display with the left hand mouse button.

### **Set Number of Copies**

You can set the number of copies using the rocker controllers.

If you would prefer to enter the value directly, click on the display with the left hand mouse button.

Other subjects

[Scanning a Number of Pages and Number of Copies](#)

### **Insert Text**

With this button you can insert a text module or stamp in your copy.

As an alternative you can call this command up via the context menu on the right hand mouse button.

[Other subjects](#)

[Edit Copies](#)

### **Insert Text Marker**

With this button you can highlight parts of your copy with a text marker.

As an alternative you can call this command up via the context menu on the right hand mouse button.

[Other subjects](#)

[Edit Copies](#)



### **Insert Mask**

With this button you can mask parts of your copy.

As an alternative you can call this command up via the context menu on the right hand mouse button.

[Other subjects](#)

[Edit Copies](#)

**Magnification Function**

Click this button to start the magnification function of Copyshop.

With this you can magnify parts of your copy. Simply move the magnifying glass to the desired spot.

To deactivate the magnifying glass click once with the left hand mouse button outside the magnified area.

**Page Copies**

Determines the nature of the printout with a number of pictures, or a number of pictures per page.

Read the section [Scan a Number of Pages and Number of Copies](#)

**Copy Margins**

Takes account of the area your printer cannot print on.

If, for example, you want to make a copy in a full DIN A4 format the margins will be cut off when you print out if you are outside the printable area. With this option Copyshop automatically adapts the enlargement factor in such a way that your copy can be printed in its complete form.

**Scan**

Starts the final scan with the current scanning parameters.

**Print**

Prints your copy/copies with the current printer settings.

## **Main Menu**

The main menu of Copyshop. Here you will find all the commands which you need to work with Copyshop.

If you would like to see a reference for all menu commands, click [Reference](#).

### **Scanner - Size of Selection Frame**

Here the size of the selection frame is displayed in the Scanner window.



### **Copy - Size of the Selection Frame**

Here the size of the selection frame is displayed in the Copy window.

**Estimated File Size**

Indicates the probable file size if you were to save the picture with the current parameters as a bitmap file (\*.bmp).

**Working Area**

The main working area of Copyshop. On the Scanner page you will see the picture scanned or loaded, and on the Copy page the preview of the printout.

**Pictures/Page**

If your printer settings (paper format) and the enlargement factor of your copy permit, you can fix her how many pictures are to be printed out per page. The possible values are specified by Copyshop.

Other subjects**Scan a Number of Pages and Number of Copies**Bilder/Seite

## **Pictures**

If you have loaded or scanned a number of pictures, you can set the active picture here.

Other subjects

**Scan a Number of Pages and Number of Copies**Bilder

**Load Picture**

Click this button to load a graphic from a data medium, such as hard disk, CD or floppy.

**Preview**

With this button you can start a prescan. In contrast to the final scan, here you can also change the selection frame. Scanning a preview before the final scan makes sense in particular if you only want to copy parts of a page.

## Order form

Copyshop 2000 Order Form - Rev. A Nov. 10, 1998

-----

If you find Copyshop 2000 useful, and continue to use it you are required to register it.

Registration may be by one of the following methods:

- 1) Credit Card - Visa, MasterCard, JCB or American Express
- 2) Cash
- 3) European customers: Eurocheque (Checks MUST be Eurocheques, no US check)

To register send payment to:      KlickSoft Computer GmbH  
Attn: Orderdesk  
Hervester Str. 36  
46286 Dorsten - Germany

For Credit Card orders you can use

- 1) our online shop at [www.klicksoft.com](http://www.klicksoft.com)
- 2) send e-mail to [order@klicksoft.com](mailto:order@klicksoft.com)

or you may order by FAX to +49 2369 9167 80 or Telephone to +49 2369 9167 30

-----

Please provide the following information:      Date \_\_\_\_\_

Company \_\_\_\_\_  
(if company registration)

Name \_\_\_\_\_

Address \_\_\_\_\_

Address \_\_\_\_\_

City \_\_\_\_\_ State/Prov. \_\_\_\_\_ Zip/Post Code \_\_\_\_\_

Country \_\_\_\_\_ FAX \_\_\_\_\_

Phone Number \_\_\_\_\_ E-Mail \_\_\_\_\_

Where Did you get Copyshop 2000? \_\_\_\_\_

Quantity: \_\_\_\_\_ Cost Each: \_\_\_\_\_

Total: \_\_\_\_\_  
(\$29.95 single license cost)

\*\*\* NOTE \*\*\* Please call or e-mail for site licenses and discounts

Payment Method:

\_\_\_ Eurocheque \_\_\_ VISA \_\_\_ MasterCard \_\_\_ JCB \_\_\_ American Express \_\_\_ Cash



Credit Card #\_\_\_\_\_ Expiration Date\_\_\_\_\_

Signature \_\_\_\_\_  
(Only required for credit card or purchase orders that are mailed or FAXED)

Thank you for registering Copyshop 2000

