



User Guide

General

Doubleback File Backup Utility allows for the periodic copy of an unlimited number of folders and files from a source location to the destination of your choice. There are a variety of options available to allow backups to run the way you wish.

Doubleback consist of two applications Doubleback (Doubleback.exe) and the Doubleback Console (DoublebackConsole.exe). Details of each of the applications are discussed below.

Doubleback

Main Menu

As soon as you launch Doubleback, you are presented with the main menu. From here you have several options.

From the menu at the top of the window you can do each of the following:

File

View Config File

The XML configuration file that controls Doubleback will be opened.

View Error Log

When an error log has been specified, any errors Doubleback encounters while performing backups will result in an entry in the log file. If any errors have occurred and an error log exists, it will be displayed.

Delete Error Log

If an error log exists, it will be deleted.

Exit

Doubleback will exit.

Backup

Start Backup

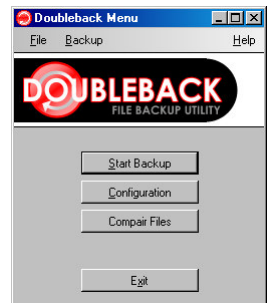
Begin the backup process (*see Start Backup*)

Help

About

The "About" screen contains information about Doubleback, including the version and licensing agreement.

From the main buttons on the menu window, you can access each of the areas listed below.



Start Backup

When "Start Backup" is chosen, Doubleback will begin backing up the files you have specified. The backup progress is shown on the screen. The top line on the screen will display the current task as well as the total tasks to perform. A progress bar just below will give a relative indication of the progress through the tasks. Just below the progress bar is the name of the specific task being processed.

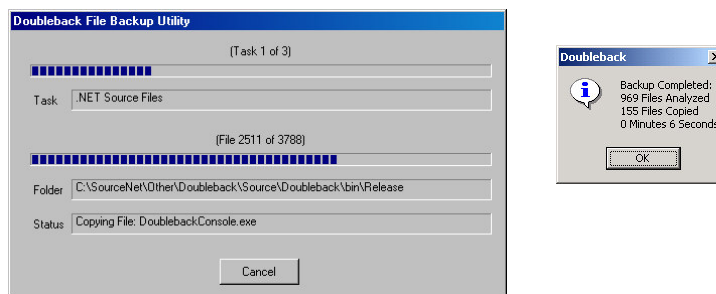
Under the task information, you can see information related to the folder and file being processed. First the current file and total number of files for this task are shown. Next, a progress bar gives a visual indication of the progress through the files. Finally, the current folder/file is displayed as well as the status.

You can cancel the backup at any time by clicking the "Cancel" button.

Note:

Canceling a backup in progress may result in errors.

After the backup has completed, a results summary will be displayed.



Configuration

The "Configuration" screen allows you to change all of the settings that control Doubleback. Two tabs allow you access to the settings; the "Backup Tasks" tab and the "Advanced" tab.

The "Backup Tasks" tab shows a list of all the backup tasks you have specified. To add a new task, click the green "plus" button. To edit an existing task, simply click on the task in the list.

Once a task has been selected, you can view and edit the following settings:

Task Name

This is simply a label used to identify the task. It can be anything, but should describe (in a general way) what that task is backing up.

Source Folder

The source folder is where the source files you wish to backup are located.

Destination Folder

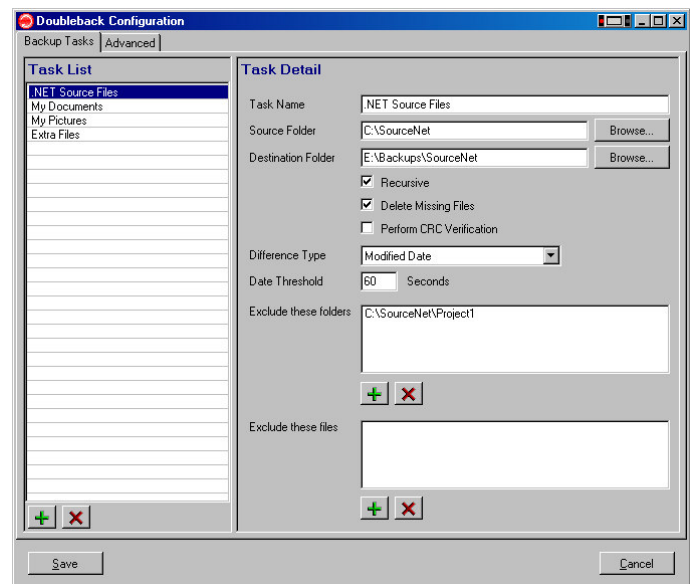
The destination folder is where copies of the files from the source folder will be placed.

Recursive

If this box is checked, all of the files from the source folder will be backed up, as well as any subfolders and their files. (Checking this option can significantly slow backups; depending on how many subfolders are included and how many files are contained in each.)

Delete Missing Files

If checked the source and destination folders will be fully synchronized each back. If a file is deleted from the source folder, it will be deleted from the destination folder as well. If this option is unchecked, the files deleted from the source will remain in the destination. (Checking this option can slow backups; depending on how often source files are deleted.)





Perform CRC Verification

If checked, after any new or modified file is copied to the destination folder, a CRC algorithm is run against both the source and destination files. This check insures the source and destination files are the same and nothing was corrupted in the transfer. (Checking this option can slow backups; depending on how large the copied files are.)

Difference Type

The difference type determines how the source and destination files are compared. The following options are available:

Modified Date

If the source file and destination file have different modified dates, then the files are considered different and a new copy of the source will be made to the destination.

CRC Check

A CRC algorithm is run for both the source and destination, if the results are different, a new copy of the source will be made to the destination. (CRC checks can take a significantly longer time to perform than a modified date check.)

Modified Date + CRC Check

If the source file and destination file have different modified dates or the CRC algorithm results differ for the two files, a new copy of the source will be made to the destination.

Force Overwrite

No comparison is made. A new copy of the source is always made to the destination.

Date Threshold

This setting is only relevant when "Modified Date" or "Modified Date + CRC Check" is selected for the "Difference Type" setting. When the dates from two files are read for comparison, they can be slightly different, even though they should be exactly the same. This is usually due to a difference in precision between NTFS and FAT file systems. So, this setting is used to define a threshold for the dates. If the difference between the two dates is within the threshold, the two are considered equal.

Exclude these folders

Any folders added to the exclusion list will be ignored during backups.

Exclude these files

Any files added to the exclusion list will be ignored during backups.

The "Advanced" tab contains settings that apply to the whole application, not just individual tasks. You can change any of the following:

Error File

If specified, any errors encountered during backup will be written to the specified file. If the file already exists when an error occurs, the error is appended to the end of the existing file.

History File

If specified, every file copy of delete is written to the specified file. If the file already exists, the history entry is appended to the end of the existing file.

File Diff Program: Program Location

This specifies the location of an external file to be used for comparing two file from the "Compare Files" screen in Doubleback. An example is WinDiff from Microsoft. If no file is specified, the "Compare Files..." option will not appear on the "Compare Files" screen.

File Diff Program: Arguments

This setting allows you to control how the source and destination file will be passed to the file diff program. When run, "%sourcefile" will be replaced with the location of the source file and "%destfile" will be replaced with the location of the destination file.

Compare Files

The "Compare Files" screen allows you to compare the contents of the source folders with that of the destination for any task. Simply choose the task or any of its sub-folders and click the "Find Diffs" button. This will recursively find all of the differences between the source and the destination. You can cancel a differences search at any time by clicking the "Cancel" button.

Any differences found will be listed on the right side of the screen. If you right click on one or more of the differences listed, you will be given some of the following options.

Backup File to Destination

A copy of the selected file(s) will be made at the corresponding destination.

Backup Folder to Destination

A copy of the selected folder(s) will be made at the corresponding destination.

Restore File to Source

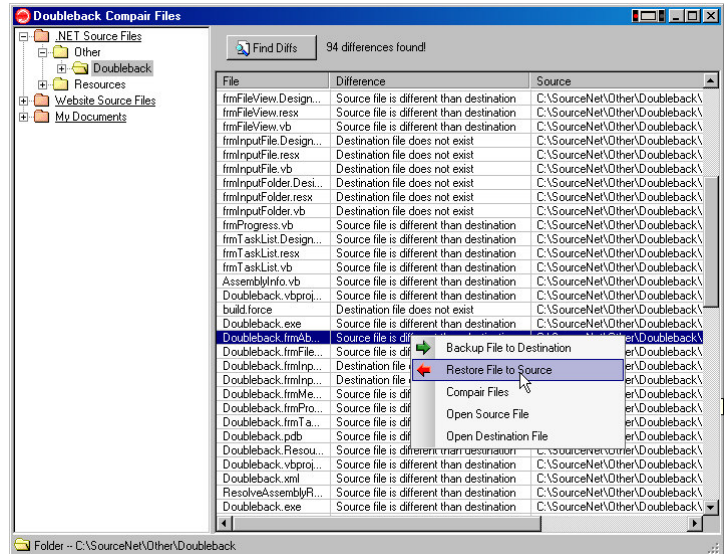
The selected source file(s) will be overwritten with a copy of the corresponding file from the destination.

Restore Folder to Source

The selected source folder(s) will be overwritten with a copy of the corresponding folder from the destination.

Compare Files...

If a "File Diff Program" has been specified on the "Advanced" tab on the configuration screen (*see Configuration*), then that program will be used to compare the specified file to the corresponding file from the destination.



Note:

If no options are listed, you may have incompatible differences selected. For example, there are no options that can be reasonably used on both a file missing from the destination and a folder missing from the source.

Doubleback Console

The console application can be used to automatically start backups. This primary function is to allow for backups to be scheduled using the Window Scheduler.

Technical Notes

Command Line Parameters

Both Doubleback.exe and DoublebackConsole.exe take an optional command line parameter. By default, both applications use "Doubleback.Config.xml" as the source for all of the settings and configuration. You can override this and specify any file you want by adding the name of the file as a argument.

For instance, running "DoublebackConsole.exe Alternative.Config.xml" will run the Doubleback Console using "Alternative.Congif.xml" as the source for settings and configuration.

