



User's Guide CONTENTS

Chapter 1 **Introduction**

[Video Conferencing on your PC](#)

[Image and Video Capture](#)

Chapter 2 **Setting Up your PC for Video Conferencing**

[Overview](#)

[How to Setup AVerMedia AVerTV Studio for Video Conferencing](#)

Chapter 3 **TV**

[The AVerMedia TV Tuner Application](#)

[Watching TV](#)

[TV Control Panel](#)

[Resizing the TV Screen](#)

[Selecting Between TV Signals \(air/cable\) or Channel Group](#)

[Adding and Deleting Channel Group](#)

[To add new channel group](#)

[To delete channel group](#)

[Renaming the TV Group](#)

[Changing the Display Panel](#)

[Memorizing TV Channels](#)

[Skiping Unwanted Channels](#)

[Selecting a TV Channel](#)

[Assigning a Channel Description](#)

[Remapping TV Channels](#)

[Locking and Unlocking a TV Channel](#)

[To lock a TV channel](#)

[To unlock a TV channel](#)

[Adjusting the Volume](#)

[16-Channel Preview](#)

[To preview the channels](#)

[To exit from the 16-channel preview screen](#)

[Setting the Video Format of External Video](#)

[Adjusting the Color](#)

[Selecting Between Video Input](#)

Chapter 4 **Image Capture**

[Capturing a TV / Video Image](#)

[To display the captured image on your desktop](#)

[To save the captured image](#)



[Multiple Image Sequence Capture](#)

[Viewing Closed Caption](#)

[Customizing Display Surface Mode](#)

[Customizing Display Surface Mode under Windows NT](#)

Chapter 5 **[Time Shift](#)**

[The Time Shift Control Panel](#)

Chapter 6 **[Scheduler](#)**

[Adding and Deleting Schedules](#)

[To create a new schedule](#)

[To delete the schedule from the list](#)

[Altering the Schedules](#)

Chapter 7 **[Hotkeys](#)**

Chapter 8 **[FM Radio](#)**

[The FM Radio Control Panel](#)

[How to Auto Scan FM Radio Channels](#)

[Selecting and Setting to Channel Selection](#)

[Selecting and Setting to Radio Frequency Selection](#)

[Saving a Radio Station to a Preset Channel and Assigning a Radio Channel Description](#)

[Tuning a Radio Channel](#)

Chapter 9 **[Playing CDs](#)**

[The Music CD Control Panel](#)

Chapter 10 **[VCR](#)**

[The VCR Control Panel](#)

[Capture Setting](#)

[Custom Define for WDM](#)

[Record Advance Setting for WDM](#)

[Capture Setting under Win NT](#)

[Capturing a Video Sequence](#)

[Playback Captured Video](#)

[Playback Control Panel](#)

[Playback Captured Video under Win NT](#)

[Changing the Size of the Play Back Window](#)

[Copy an Image](#)

Chapter 11 **[I-Record \(WDM\)](#)**

[The I-Record Control Panel](#)



CHAPTER 1 INTRODUCTION

We have designed this user's guide to be dual in purpose. References to **AVerMedia® AVerTV Studio** (TV/FM tuner) and also applies to **AVerMedia® AVerTV** (TV tuner).

Convert your computer system into a real multimedia entertainment center with **AVerMedia® AVerTV**! Now you can watch television, play music CD, video conference, and capture still images and video on your PC. If you purchase **AVerMedia® AVerTV Studio**, you can even listen to FM radio.

Surely, you'll never miss your favorite ball games, soaps or game shows anymore. Because **AVerMedia® AVerTV** and **AVerMedia® AVerTV Studio** comes with a scheduler wherein you can configure to show or record your preset TV programs in a pop up window whenever they are aired.

Note: If you installed the VxD driver, the Time Shift and I-Record functions will not be available and you can only save your recorded video in AVI format. It is highly recommended that you install the WDM driver, not only will the Time shift and I-Record feature be available you get the added benefit of saving your files in MPEG2 format.

Video Conferencing on your PC

Along with your own desktop camera, microphone, modem and the Microsoft NetMeeting (VxD), **AVerMedia® AVerTV** or **AVerMedia® AVerTV Studio** also lets you do video conferencing. The quality of seeing and talking to long distance friends is now sharp, clear and at a fraction of the cost.

Image and Video Capture

You can also capture still images and full motion video. Record television programs or other clips in a snap.



CHAPTER 2 SETTING Up your PC FOR VIDEO CONFERENCING

Overview

This chapter briefly describes how to setup your computer for video conferencing. We will not go into detail about setting up a network environment nor about using video conferencing software.

For information on network settings, please refer to the Windows[®] manual. For details on video conferencing, please refer to the video conferencing software manual.

How to Setup AVerTV Studio for Video Conferencing

In order to use the **AVerMedia[®] AVerTV Studio** card for video conferencing, do the following:

1. Make sure the **AVerMedia[®] AVerTV Studio** card is properly mounted into your PC.
2. Make sure you have a sound card in your system. Then, connect a microphone to the *microphone input* port of the sound card.
3. Connect a pair of external speakers to your sound card.
4. Connect a 28.8Kbps or faster modem to your PC.
5. Connect a camcorder or desktop camera to the **AVerMedia[®] AVerTV Studio** "VIDEO" or "S-VIDEO" port depending on the type of input.
6. Start Windows[®].



7. For Internet video conferencing:
 - If you still do not have access to the Internet, sign up for an Internet account from your local service provider.
 - Go to the **Control Panel** and double-click the **Network** icon. Check and verify if TCP/IP is listed under *network components*.
 - If TCP/IP is not listed, click on the **Add** button. Double-click **Protocol**. Click **Microsoft**, then click **TCP/IP**.
 - Properly setup the TCP/IP environment. Click **TCP/IP**, then click **Properties** and provide all necessary information, e.g., your user name, IP address, and more.
8. Install the video conferencing software. Refer to the software manual for details.

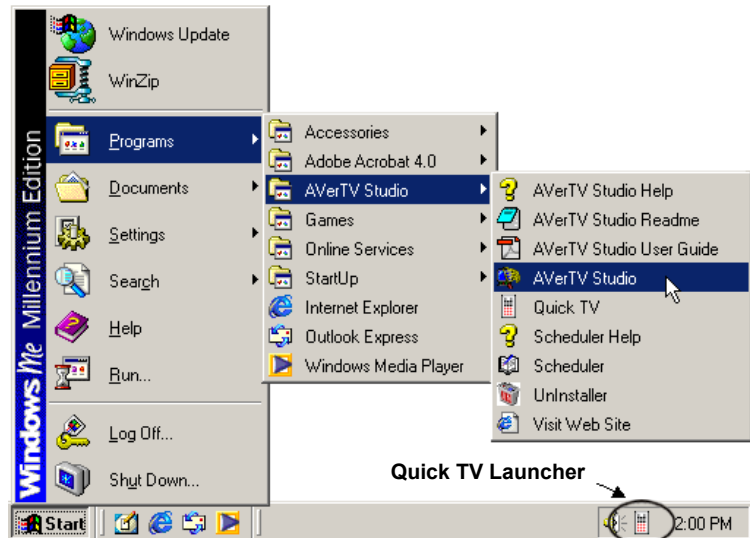
CHAPTER 3 TV

The AVerMedia TV Tuner Application

The **AVerMedia® AVerTV Studio** application allows you to watch TV or video, record still or motion video, play music CDs, and listen to FM radio on your PC while you work on your computer.

Watching TV

To watch TV or video on your computer monitor, run **AVerTV Studio** from the programs menu.



To run the application, click **Start**, select **Programs**, choose **AVerTV Studio**, and then click **AVerTV Studio**. Or simply double-click the **Quick TV** launcher located at the lower right corner of the screen.

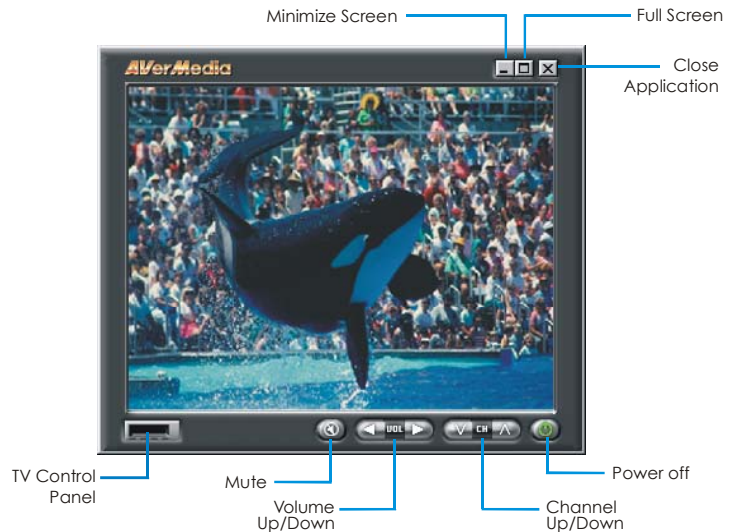
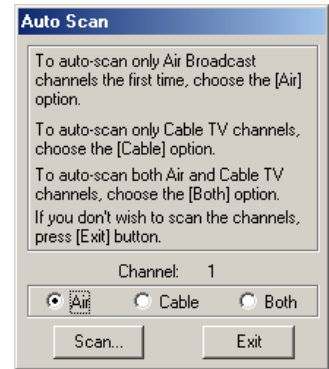




A TV monitor will then appear on your screen.

If you run the application for the first time, an *Auto Scan* dialog box will appear. This will search and memorize the channel line up in your area. You can choose not to scan or scan both air and cable or either of the two. (Refer to the section titled, *Memorizing TV Channel*, for more details.).

The **TV monitor** shows live TV or video.

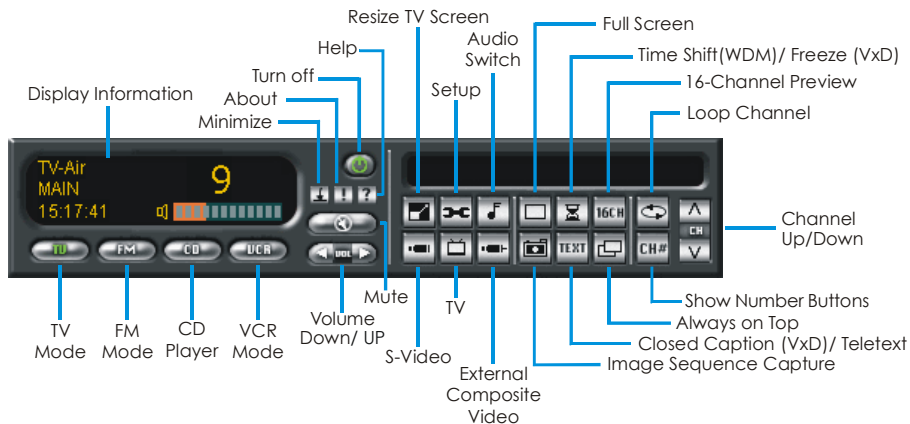


The **TV Control Panel** provides button controls for switching to different mode, selecting TV channels, adjusting volume and color, changing TV display mode, capturing images, and more. It has a panel display that shows the current active video source (e.g. TV or Video), channel number, mute and other indicators.

To display the **TV Control Panel**, click the button located at the lower left corner of the TV screen.



TV Control Panel



The [table on the next page](#) describes the button controls on the TV control panel are used for.

Resizing the TV Screen



Click the **Resize TV Screen** button to change the size of the TV screen. Or simply click and drag the tip of the TV screen to resize.



Click the **Full Screen** button to display TV/video in full screen. To display or hide the control panel bar, simply use the left mouse button and click anywhere on the screen. Use the right mouse button to go back to previous screen size.



To make TV/video screen float over the top of other applications, click the **Always on Top** button.

Selecting Between TV Signals (air/cable) or Channel Group



Click the **TV** button to choose whether to watch TV using the default air or cable signals. If you have added channel group, you can also choose to select the added group. (Refer to section titled, [Adding and Deleting Channel Group](#), for more details.).

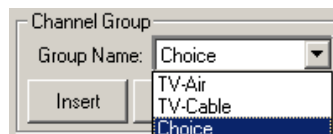
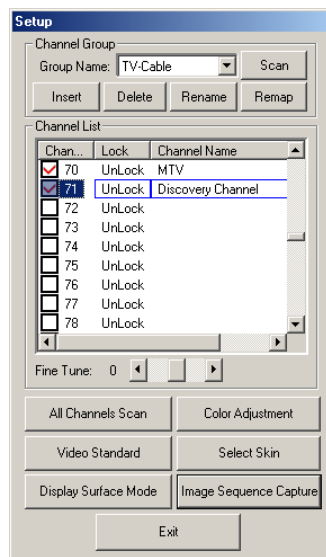


BUTTON	FUNCTION	BUTTON	FUNCTION
Panel Display	Displays current mode and other useful information.	Turn off	Close the application.
TV Mode	Switch to TV.	FM Mode	Switch to FM Radio.
CD Player	Switch to CD.	VCR Mode	Switch to VCR.
Resize TV Screen	* Enlarge/Reduce the TV Screen size (many sizes to choose from).	Setup	Allows you to: * Tune into Air/Cable TV. * Autoscanner channels. * Fine-tune a channel. * Select a TV channel. * Lock/unlock channel. * Remap TV channels. * Setup video buffer * Configure image sequence capture. * Change panel display.
Audio Switch	Choose between the available audio type.	Full Screen	Show TV/video in full screen.
Volume	Increase/Decrease the volume level.	Time Shift (WDM)	Allows you to pause and continue to watch from where you paused a show.
Mute	Turn off the sound.	16-Channel Preview	Display 16 consecutive TV channels on-screen.
Minimize Panel	Minimize the control panel to icon size.	Loop Channel	Return to previous channel.
About	Displays which version of software you are using.	S-Video	To watch video from S-Video source.
Help	Invoke the on-line help utility.	External Composite Video	To watch video from External Video Source.
TV	Switch to TV group selection.	Image Sequence Capture	Capture TV/Video image.
Closed Caption (VxD) /Teletext	Shows closed caption text or launch Teletext Application.	Show Number Button	Display the number buttons.
Always on Top	The TV Screen is always on top of other windows.	Channel Up/Down	Go to the next upper or lower active channel.



Adding and Deleting Channel Group

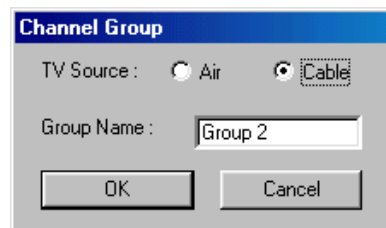
If you want to add or delete channel group, do the following:



To add new channel group:



1. Click the **Setup** button.
2. In the *Setup* dialog box, click the **Insert** button. The *Channel Group* dialog box will then appear:



3. Select TV Source between **Air** or **Cable**.
4. In the *Channel Name* text box, you can change the default name and type in the new name, then click **OK**.
5. In the *Setup* dialog box, *Channel* column, double-click the check box beside the channel number to select your own channel line up. A check mark indicates that the channel is selected.

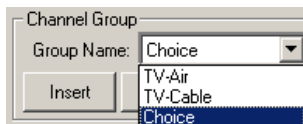
To delete channel group:

1. Click the **Setup** button.
2. In the *Group Name* drop-down list, select the name of the group you want to remove (e.g. Choice).
3. Click **Delete** to remove the selected group.

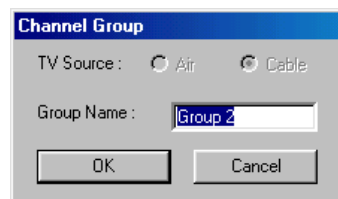


Renaming the TV Group

To rename channel group:



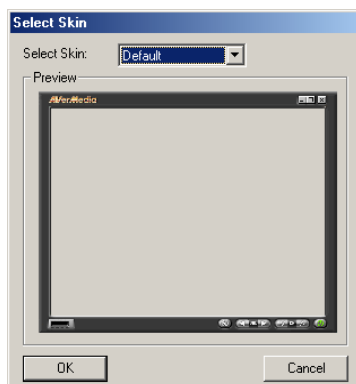
1. Click the **Setup** button.
2. In the *Group Name* drop-down list, select the name of the group you want to change the name (e.g. Choice).
3. Click **Rename** button. The *Channel Group* dialog box will then appear:



4. In the *Group Name* text box, type in the new name then click **OK**.

Changing the Display Panel

If you want to change the surface design of the TV frame and control panel, do the following:




1. Click the **Setup** button.
2. In the *Setup* dialog box, click **Select Skin** button. The *Select Skin* dialog box will then appear:
3. In the *Select TV Skin* drop-down list, select the design you prefer (5 styles to choose from.) then Click **OK**.



Memorizing TV Channels

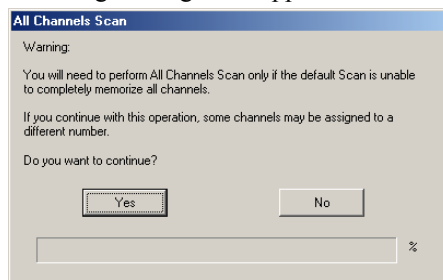
Auto-scan will search and memorize all channel line up in your area. So when you browse through programs it will skip all the unselected channels. In the Setup dialog box, CH column, all selected channels are marked with check. If you haven't done this when you first started using the application, simply follow the auto-scan procedures below. (Refer to section titled, Skipping Unwanted Channel, for more detailed information to exclude selected channel.)

To auto-scan TV channels:

1. Click the **Setup** button. 
2. In the *Group Name* drop-down list, choose to auto-scan **Default Air** or **Cable** TV channels.
3. Click **Scan**.

The application has a default frequency table. When you click **Scan**, the application will use the frequencies in this table and search for the active channels. Active channels will then be memorized by the application.

4. You can terminate the searching process anytime. Just click **Stop**.
5. Check and verify that you can access all the TV channels (Refer to section titled, *Selecting a TV Channel*, for more detailed information regarding channels access).
6. If there are channels missing from the channel memory, click **All Channels Scan** in the Setup dialog box and then repeat the auto-scan. The following message will appear:



7. Click **Yes** to start all channel auto-scan. The **AVerTV Studio** application will then scan frequencies starting from 54 MHz to over 800 MHz, increasing by 1 MHz at a time. The application will check these frequencies for active channels, memorizing those that are.



Wait for the application to finish the all channel scan process or in the *All Channel Scan* dialog box, click **Stop** to terminate the searching process.

When auto-scan stops the **AVerTV Studio** application will return to the previously selected channel.

Skipping Unwanted Channels

If you want to exclude the selected channel, do the following:



1. Click the **Setup** button.
2. In the *Setup* dialog box, *Channel* column, double-click the selected channel you want to exclude (see figure below).

Chan...	Lock	Channel Name
<input checked="" type="checkbox"/> 70	UnLock	MTV
<input checked="" type="checkbox"/> 71	UnLock	
<input type="checkbox"/> 72	UnLock	

Selecting a TV Channel

There are three ways you can select a desired TV channel:

1. Click the **Channel Up/Down** buttons until you reach your desired channel (see figure at the right).



2. Click on the **Number** buttons to get your desired channel number. To display the number pad of the TV control panel, click **CH#** button.



3. Click the **Setup** button.

In the *Setup* dialog box, channel list, simply click on the desired channel.


You will need to perform fine-tuning only if the reception of the selected channel is not clear. Adjust the **Fine Tune** slider to get a clear TV picture.

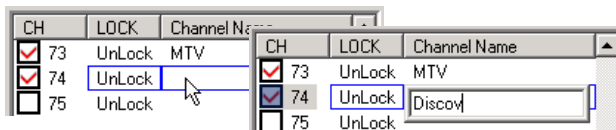




Assigning a Channel Description

If you want to assign or give a channel name, do the following:

1. Click the **Setup** button. 
2. In the *Setup* dialog box, *Channel Name* column, double-click the text box of the channel you want to assign a name. A frame will then appear:



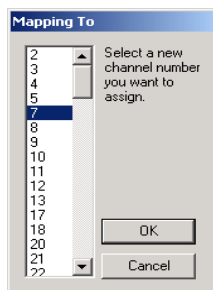
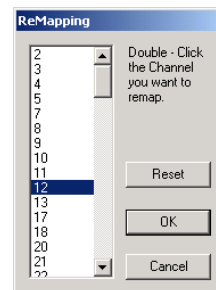
3. Type in the channel description, then press **Enter**.

Remapping TV Channels

If you wish to assign TV channels with channel numbers, which you find easier to remember, you can map the memorized channels to other channel numbers.

To remap a TV channel, do the following:

1. Click **Remap** button in the *Setup* dialog box.
2. The *ReMapping* dialog box will then appear. (See figure at the right.) Double-click a memorized TV channel from the list.



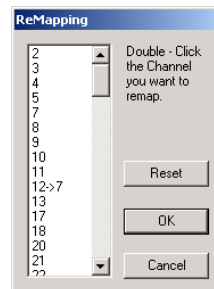
3. In the *Mapping To* dialog box, choose a new channel number and click **OK**. (See figure at the left.)



- The remapped TV channel with its newly assigned channel number will appear in the *ReMapping* dialog box.

Click **OK** to confirm your selection.

- If you wish to change back to the original TV channel numbers, click **Reset** in the *ReMapping* dialog box.



Locking and Unlocking a TV Channel

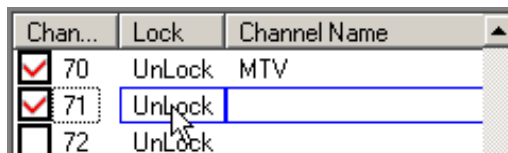
You may lock out certain TV channels (e.g. adult channels) if you want to prevent others from watching them.

To lock a TV channel:

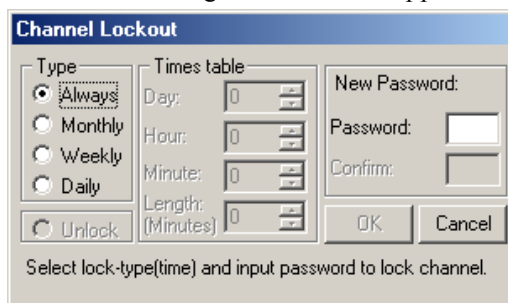
- Click the **Setup** button.



- In the *Channel Setup* dialog box, *lock* column, double-click the unlock channel you want to lock.



- The *Channel Lockout* dialog box will then appear:





4. Choose the lock **Type**, that is, how often you would like to lock out the TV channel. There are four types to choose from:
 - Choose **Always** if you want to lock out the TV channel all the time.
 - Choose **Monthly** to lock out the channel once a month, at a preset day.
 - Choose **Weekly** to lock out the channel once a week, at a preset day and time.
 - Choose **Daily** to lock out the channel everyday at a preset time.
5. If you selected **Monthly**, **Weekly** or **Daily**, you will need to set the **Time Table**:
 - Set the **Day** of the month or week when to lock out the channel (only if you selected **Monthly** or **Weekly**).
 - Choose the time to lock out the channel by adjusting the **Hour** and **Minute** settings appropriately.
 - Set the **Length** of time (in number of minutes), that is, how long the TV channel will be locked out.
6. Provide a **Password** to use for unlocking the TV channel in the future.
7. Click **OK** to accept the new settings, or click **Cancel** to revert back to the original settings.

To unlock a TV channel:

1. Click the **Setup** button.

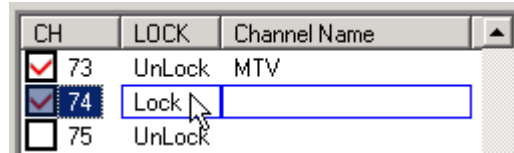


2. In the *Channel Setup* dialog box, select the locked channel. The *Confirm Password* dialog box will then appear. (See figure at the right.) In the *Confirm* text box, type in the password for unlocking the channel and click **OK**.

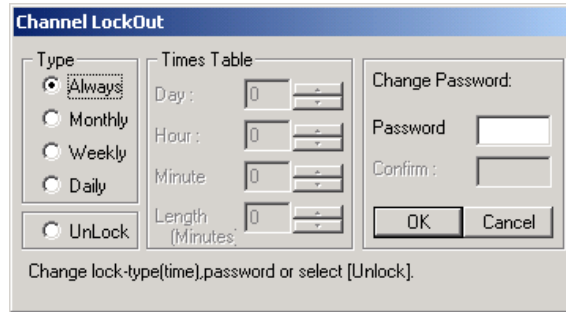
A dialog box titled 'Confirm Password' with a blue header. It contains a label 'Channel:' followed by the number '71'. Below this is a label 'Confirm:' followed by a white text input box. At the bottom are two buttons: 'OK' and 'Cancel'.



- If you want to set back to unlock, in the lock column, double-click the channel you want to set unlock.



- The *Channel locked* dialog box will appear:



- Select *Unlock*, then click **OK**.

Note :

- You can use letters and numbers in your password.
- It is important to remember your password. You won't be able to unlock channel or change the password itself without your current password. If you forgot your password, you must reinstall the application.

Adjusting Volume



On the TV Control Panel, simply click the **Volume** to increase (+) or decrease (-) the volume level.




16-Channel Preview



The 16-channel preview function can display 16 TV channels on-screen at the same time. You can see clearly which TV programs are currently showing on these channels.

To preview the channels:

1. Click the **16-Channel Preview** button. 
2. The screen will be gradually filled up with 16 TV channels, starting from the currently selected channel.

To exit from the 16-channel preview screen:

- Select any one of the 16 channels on-screen and double-click the left mouse button on that channel, or use the arrow \uparrow , \downarrow , \leftarrow , or \rightarrow buttons of your keyboard then press **Enter**. You will then be tuned in to that channel.

OR,

- Click the right mouse button or press **ESC** to return to the originally selected TV channel.

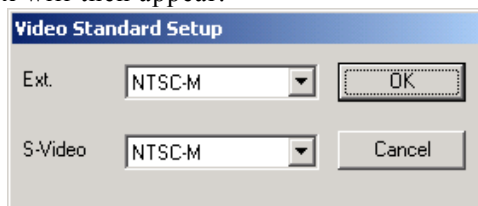


Setting the Video Format of External Video

To set the video format used by the external video source, do the following:



1. Click the **Setup** button.
2. In the *Channel Setup* dialog box, click the **Video Standard Setup** button. The *Video Standard Setup* dialog box will then appear:



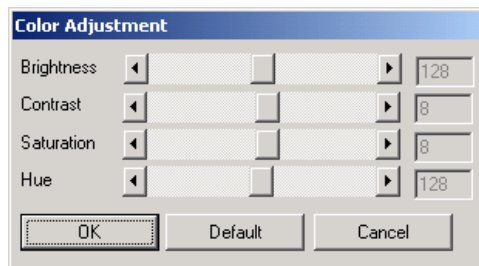
3. If you have a composite video source, click the **Ext. Video** drop-down list and select the proper video format.
4. If you have an S-video source, click the **S-Video** drop-down list and select the proper video format.

Adjusting the Color

To adjust the color of the TV or video picture:



1. Click the **Setup** button.
2. In the *Channel Setup* dialog box, click the **Color Adjustment** button. The Color Adjustment dialog box will then appear:





3. Adjust the **Brightness**, **Contrast**, **Saturation**, and **Hue** sliders to come up with your desired color.

If you change your mind and want to change back to the factory default settings, click **Default**.

4. Click **OK** to accept the new settings, or click **Cancel** to revert back to the original settings.

Selecting Between Video Input

If you want to watch video from the external source, make sure you select the proper type of video input.



Click **External Composite Video** button, if the external video source uses the composite video standard.



Click **S-Video** button, if the video source uses the S-Video Standard.

CHAPTER 4 IMAGE CAPTURE

While you watch live TV or video from your PC monitor, you can use the **AVerMedia AVerTV Studio** application to capture images for your document, presentation or web page.

Capturing a TV/ Video Image



To capture image, click **Image Sequence Capture** button. The *Album*, which is the captured image viewer will then appear:



To display the captured image on your desktop:



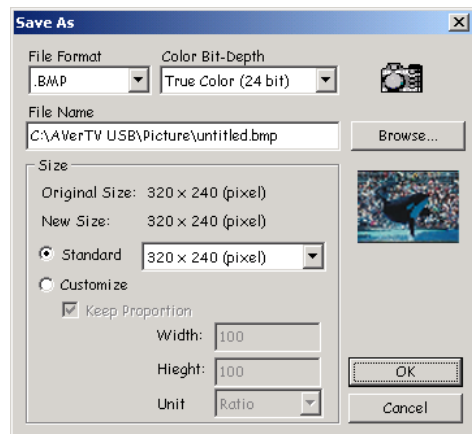
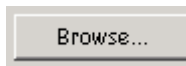
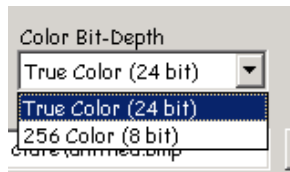
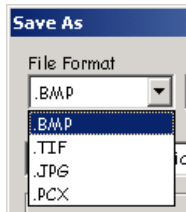
1. Select an image from the captured image viewer then click **Desktop Wallpaper** button.
2. The selected image will be displayed as your wallpaper, the background of your desktop.

To save the captured image:



1. Select image then click **Save As** button. The *Save As* dialog box will then appear: (see figure next page.)





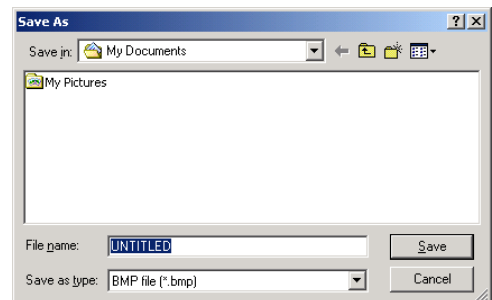
3. Choose the *File* type.

Choose the image file type. From the **File Format** drop-down menu, select the format for saving the captured image.

4. Choose the *Color* format.

- Choose 24-bit to capture image in 16M colors.
- Choose 8-bit to capture image in 256 colors.

5. Specify a *File name* for saving the captured image. Click **Browse** to scan for folders and select a destined location for saving the image.





320 × 240 (pixel)
 160 × 120 (pixel)
 176 × 144 (pixel)
 320 × 240 (pixel)
 352 × 288 (pixel)
 640 × 480 (pixel)
 720 × 348 (pixel)
 800 × 600 (pixel)
 1024 × 768 (pixel)
 1280 × 1024 (pixel)

☒ **Customize**

☒ Keep Proportion

Width: 100

Height: 100

Unit: Ratio

OK

Cancel

6. Choose the image size.

- In the **Size** section, select the **Standard** option and choose a desirable image size from the drop-down list.
- If you want to set your own image size, select **Customize** and enter the image **Width** and **Height**. If you want to maintain relative width and height, select the **Keep Proportion** option. Choose a measurement unit from the **Unit** drop-down list. You can specify any image size you want. The maximum capture size can be 1280×1024.

7. Click **OK** to save the image. Click **Cancel** if you do not want to capture the image.

Multiple Image Sequence Capture

To capture multiple images, do the following:



1. Click the **Setup** button.
2. In the *Channel Setup*, click the **Image Sequence Capture** button. The *Image Sequence Capture* dialog box will then appear:

Image Sequence Capture

Number of Pictures: 1

Time Interval [second]: 1

OK Cancel

3. In the *Number of Pictures* drop-down list, select or type in the number of images you want to capture in the text box provided.



4. In the *Time Interval (second)* drop-down list, select or type in the period of time before it captures the next image in the text box provided.
5. Click **OK** to save the new setting. Click **Cancel** if you do not want to change the setting.

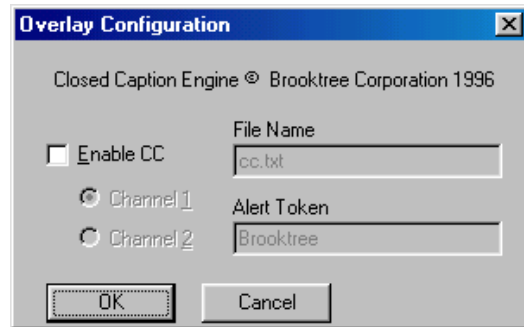
Viewing Closed Caption (VxD)

The NTSC version of the **AVerMedia AVerTV Studio** card has the ability to display closed caption.

To enable closed caption, do the following:



1. Click the **Closed Caption/Teletext** button. The Overlay Configuration dialog box will appear:



2. In the Overlay Configuration dialog box, click the Enable CC check box. If closed caption shows too fast and you are unable to read them completely, you may save them to a text file for later reading. Just provide a **File Name** for the text file.

Note:

- To use the Closed Caption function, your VGA card must have overlay capability.
- Closed Caption will not run in Primary Surface mode.
- If you switch to Overlay mode, you may switch back to Primary mode. (Refer to section titled, *Customizing Display Surface Mode*, for more detailed information.)

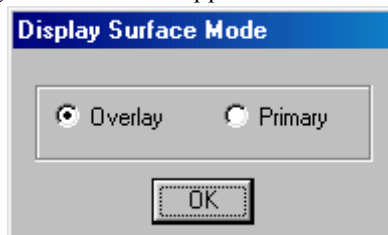


Customizing Display Surface Mode

Operating in Primary surface mode is helpful in eliminating VGA card compatibility problems. Under this mode, you will not be able to view closed caption with video or with live TV broadcast on your computer screen.

To customize display surface mode, do the following:

1. Click the **Setup** button.
2. In the *Setup* dialog box, click the **Display Surface Mode** button. The Display Surface Mode dialog box will then appear:

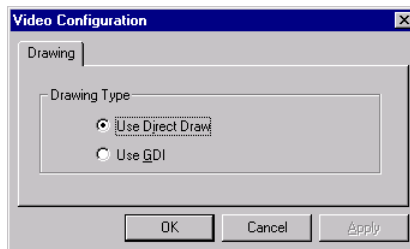


3. Simply select the desired mode. Click **OK**.

Customizing Display Surface Mode under Windows® NT

To customize display surface mode under Win NT, do the following:

1. Click the *Setup* button.
2. In the *Setup* dialog box, click the **Display Surface Mode** button. A Video configuration dialog box will then appear:



3. Simply select the desired system. Click **OK**.



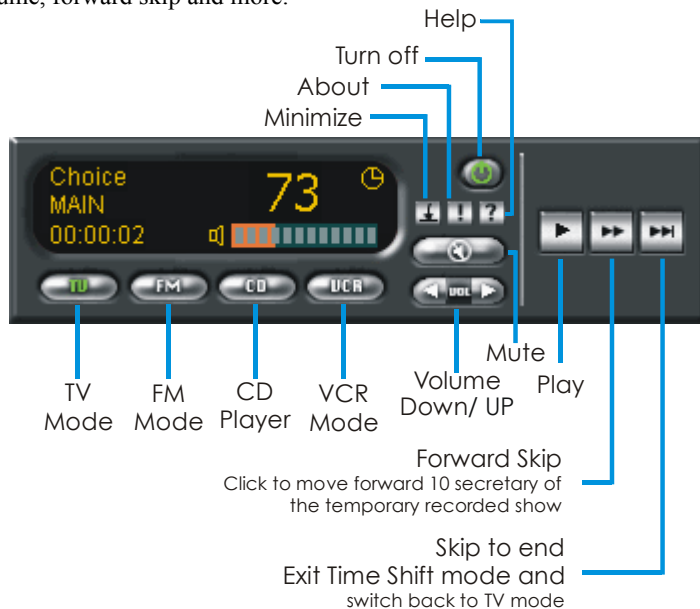
CHAPTER 5 Time Shift (WDM)



When you need to leave your PC for a few minute, Time Shift function pauses and temporarily records the Live TV program. You can continue to watch from where you paused a show and even skip commercial.

The Time Shift Control Panel

The Time Shift Control Panel provides button controls to pause the live show and replay the temporary recorded show from where you paused, adjusting volume, forward skip and more.

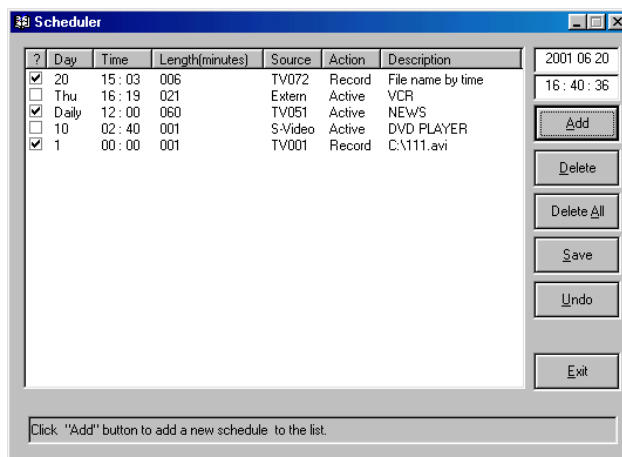


When you forward skip the temporary recorded file and reached the real time viewing. It will automatically switch to TV mode. To completely skip the temporary recorded show, click **Skip to End** button.



CHAPTER 6 SCHEDULER

The **Scheduler** application allows you to create a list of preset schedules for watching and recording your favorite TV programs. You can use this utility to record the program for later viewing or watch the program in real time. You can preset the day and time to turn on the TV program and the length of the program. To run this application, click **Scheduler** from the AVerMedia AVerTV Studio program menu or right-click the **Quick TV** launcher located at the lower right corner of the screen then in the list menu select **Scheduler**. The *Scheduler* dialog box will then appear:



Schedule Listing

This displays a list of preset schedules you have created.

Save

Click this to update the additional data or the changes made in the scheduler.

Undo

After you modify a schedule, you may still revert back to the original schedule. Just click the **Undo** button.

Exit

Click this to exit scheduler.

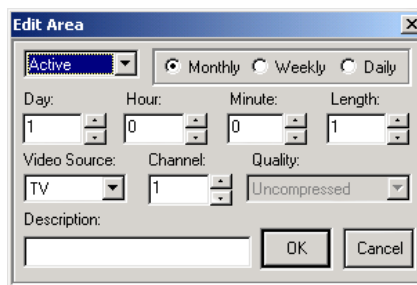


Adding and Deleting Schedules:

If you want to add or delete a schedule, do the following:

To create a new schedule:

1. Click the **Add** button in the *Schedule* dialog box.
2. The *Edit Area* dialog box will then appear:



3. Select **Active** to watch a TV program in real time. Select **Record** to record a TV program for later viewing.
4. If you want to always record a program at a certain time, you can select **Monthly**, **Weekly** or **Daily**.
5. In the *Day* text box, key-in the day of the week when to watch or record a TV program.
6. In the *Hour* and *Minute* text box, set the time. Adjust the Hour and Minute settings accordingly.
7. In the *Length* text box, specify how long you want to watch or record a TV program in minute.
8. If you want to watch video from an external source like a camcorder or VCR, select the type of video source in the *Video Source* drop-down list.
9. In the *Channel* text box, key-in the TV channel where your favorite TV program is on.
10. Set the video quality for captured clips. Select an option in the *Quality* drop-down list.



11. Type in a description, e.g., the name of a TV program, in the provided text box. Or, you may just leave it blank.
12. Click **OK** to include the new schedule to the list. Click **Cancel** if you do not want enters a new schedule or to exit *Edit Area*.

To delete the schedule from the list:

1. Select an item from the schedule listing you want to delete.
2. Click the **Delete** button in the *Schedule* dialog box or click **Delete All** to clear the entire schedule from the list.

Altering the Schedule:

To change the schedule from the list:

1. Double-click the item you want to modify from the schedule listing.
2. In the *Edit Area* dialog box, you can change the data you want to modify.
3. Click **OK** to accept the new schedule, or click **Cancel** to revert back to the original schedule.



CHAPTER 7 Hotkeys

The **AVerMedia AVerTV Studio** application provides hotkeys for quick TV viewing.

Hotkey	Description	Function
UP/DOWN ARROW	Channel Up/Down	Press to go to the next upper TV channel. Press to go to the next lower TV channel.
LEFT/ RIGHT ARROW	Volume	Press to increase the volume level. Press to decrease the volume level.
NUMERIC KEYS	TV Channel	Use the NUMERIC KEYS to directly key in the TV channel number.
F5	Full Screen	Show TV/Video in full screen.
A	Audio Switch	Choose between the available audio type.
F6	Display information	Display the current setting.
S	Image sequence capture	Capture an image.
M	Enable/ Disable Mute	Turn off/on the sound.
V	TV/Video Switch	Change between TV and video display.



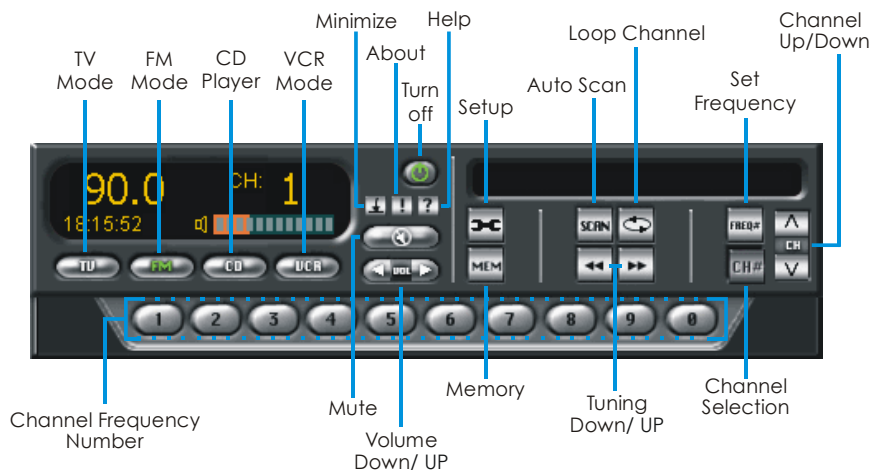
Chapter 8 FM Radio



FM Radio button

The FM Radio Control Panel

The FM Radio Control Panel provides button controls for selecting FM radio stations, adjusting volume, scanning radio frequencies and more.



To switch back to the TV Control Panel, click the **TV** button.

How to Auto Scan FM Radio Channels

If this is your first time to use the FM mode, perform auto scan to automatically memorize all active FM radio stations in your area.



To memorize all FM radio stations, click the **AUTO SCAN** button. The first 30 active channels will be automatically scanned and memorized, and then saved to 30 preset channels.



Selecting and Setting to Channel Selection

You can listen to any of the radio stations that were memorized and saved to the 30 preset channel.

To set and select between preset channel:



1. Click **Channel Selection** buttons of the FM Radio Control Panel to set to channel selection mode.
2. On the **Number Buttons**, click the preferred preset FM channel;



3. Click the **Channel Up/Down** buttons until you reach your desired FM radio channel (see figure at the left); or
4. You may also use the **Numeric Keys** on your keyboard to select the preset FM radio channel.

Selecting and Setting to Radio Frequency Selection

To set and select to radio frequency :



3. Click on the **Frequency Button** to set to the Radio Frequency Selection mode.
4. Enter a radio frequency by clicking in the **Number Buttons** of the FM Radio Control Panel or by pressing on the **NUMERIC KEYS** of your keyboard. If the radio channel sounds unclear or noisy, adjust the channel by entering another frequency or by tuning. (Refer to *Tuning a Radio Channel* the sections for more information.)

You can save the radio frequency to a preset station. Just follow the procedure in the section, *Saving a Radio Station to a Preset Channel*.

NOTE : When setting a radio frequency, be sure that it is within the acceptable arrange of FM radio frequencies in your area. If you entered a frequency setting which is out of range, the **AVerTV Studio** application will disregard this invalid setting. The application will then automatically tune the FM radio back to the previous frequency.



Saving a Radio Station to a Preset Channel and Assigning a Radio Channel Description

If you want to assign another FM radio station to one of the preset channel, do the following :

1. Refer to section *Setting to Radio Frequency Selection*.
2. Click **Memory** button then it will switch to *Channel Selection* setting
3. Type in the channel number you want to preset the station.



OR,

1. Click the **FM Setup** button of the FM Radio Control Panel. The *FM Setup* dialog box will then appear:



FM Channel Setup

Frequency Channel

Channel Name

Ch...	Frequency	Channel Name
1	87.80	
2	90.52	
3	90.90	
4	92.70	
5	93.10	
6	93.70	
7	94.00	
8	94.30	
9	94.70	
10	96.30	
11	96.90	

2. In the **Frequency** text box, type in the radio frequency.
3. In the **Channel** text box, type in the channel number on where you want to save the program.
4. In the **Channel Name** text box, type in the radio channel description.
5. Click **Memory**.



Tuning a Radio Channel

If a selected FM radio channel sounds unclear or noisy, you can tune the channel.

Click the **Tuning** right arrow button to increase the radio frequency by 0.1 MHz.

Click the **Tuning** left arrow button to decrease the radio frequency by 0.1 MHz.



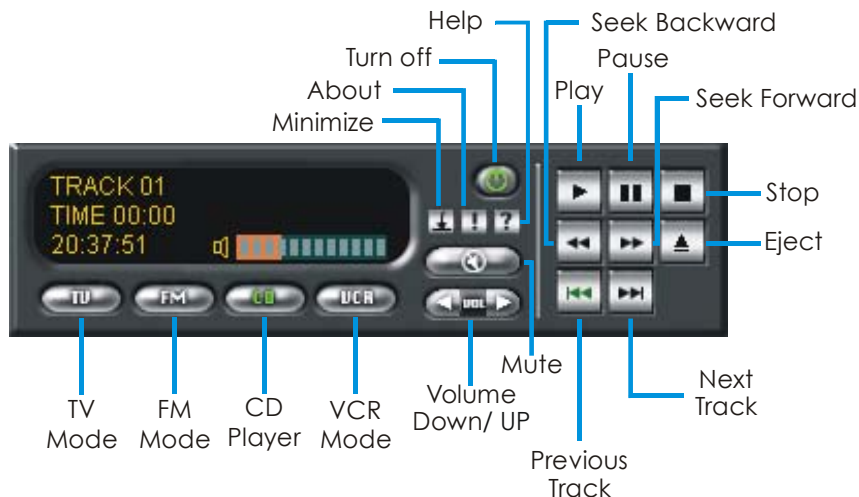
CHAPTER 9 Playing CDs



Click the **CD** button to switch to the Music CD Control Panel and play your favorite music CDs.

The Music CD Control Panel

The Music CD Control Panel provides button controls for playing music CD, selecting audio track, adjusting volume and more.



Jump to any part of an audio track by using the **Fast Forward** and **Rewind** buttons. You can advance forward or backward within a track by any number of seconds.



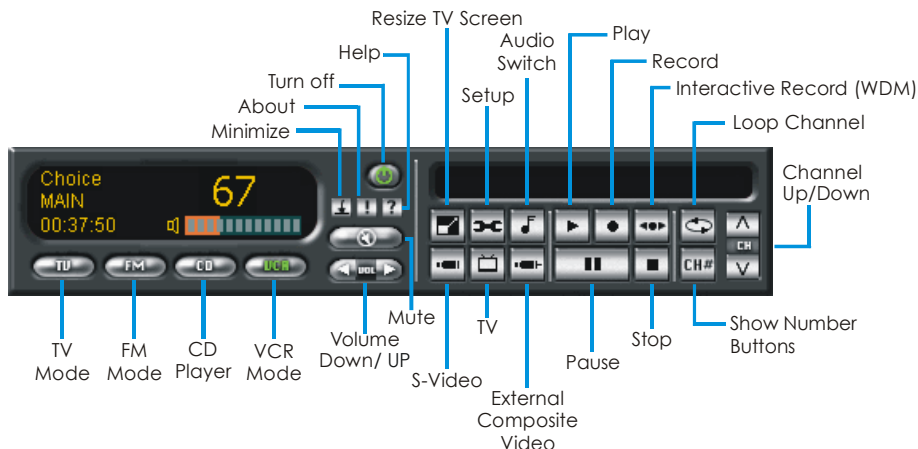
Chapter 10 VCR



Click the **VCR** button to change to the VCR Control Panel and record your favorite TV/ Video program.

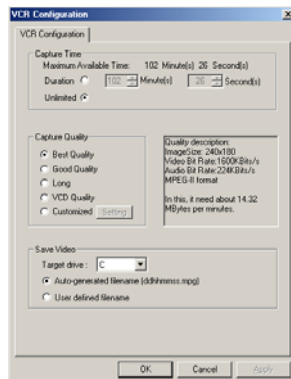
The VCR Control Panel

The VCR Control Panel provides button controls for recording and playback AVI (VxD)/ MPEG2 (WDM) format, adjusting volume and more.



Capture Setting

Before recording TV programs, click the **Setup** button to specify capture settings. The *Setup* dialog box will then appear:



Capture Time

Specify how long you want the capture to last. Select **Duration** and enter the time length in number of minutes and seconds.

If you do not have any specific time length requirement, select the **Unlimited** option. The utility software will capture the largest clip that your hard drive can accommodate.



Capture Quality

Select **Best Quality** to capture high quality video clips. This creates large files, especially when you are capturing long clips. To have smaller file sizes, select other quality options.

To customize settings, select **Custom Define** and click the **Setting** button. The *Custom Define* dialog box will then appear. See the section, *Custom Define*, for more information.

Save Video

Choose a **Target drive** where to save the video clip. Select **Auto-generated filename** to create files automatically during capture. To specify your own filename for the captured clip, select **User defined filename**.



Image Size (VxD)

Choose preset dimensions for your captured video from the drop-down list.

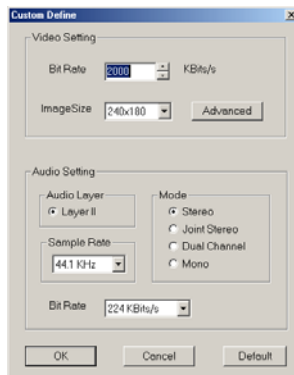
Frame Rate (VxD)

Select the number of frames to capture per second.

Audio (VxD)

Select an audio quality from the **Format** drop-down list. You can change audio settings by selecting an option from the **Attribute** drop-down list.

Custom Define for WDM



Video and Audio Bit Rate

Set the desired video and audio capture bit rate. Higher rate produces better quality, but this will take up more space on your disk drive. If you plan to use the clip on the Web, the recommended settings are 300Kbps for video and 32Kbps for audio. For Video CD authoring, use the standard 1150Kbps for video and 224Kbps for audio. For professional applications that demand best quality output, use 3000Kbps for video and 384Kbps for audio.



Image Size

In the image size drop down list, simply select from the available preset video sizes. The higher you set the video size, the more processing power (CPU) and the larger disk space are required.

Audio Layer

Encodes audio in layer II. Layer II adds greater accuracy to the compression that create high-fidelity, and CD quality sound.

Note: In layer II joint stereo, the high frequency part of the signal (above 2Khz) is combined. The stereo image is preserved, but only the temporal envelope is transmitted. Although a 44.1Khz sample rate, joint stereo mode and Layer II encoding provide higher quality sound encoding, they both also require greater computing power to compress and consume more disk space. Consider these issues when compressing audio.

Mode

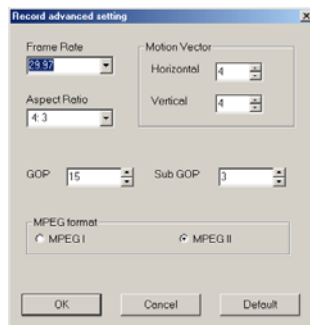
You have four audio channel choices to choose from stereo, joint stereo, dual channel, and mono. To obtain high-fidelity sound, use joint stereo with Layer II compression.

Sample Rate

To convert an analog signal to digital, your computer takes measurements of the sound wave's amplitude (a sample) at particular points in time. The more samples the computer takes, the more information it obtains and thus, the closer it comes to capturing something close to the original sound. 44.1 Khz is CD quality sound and is the default setting.

Record Advance Setting for WDM

The items here are for advance user. If you are not sure on how to set some of the options, we recommend you to use the default setting.



Frame Rate

This sets the number of frames to capture per second. You can choose from the available frame rates.

Motion Vector

This setting determines the smoothness of motion in a captured clip scene. The higher the values for horizontal and vertical settings improve the capturing of motion,



but it would require additional system resources and needs a larger amount of processing power. The default value for the program is 4 the encoder will search motion vector in the range of -4.5 to $+4.5$.

Aspect Ratio

Records and playback the captured video clips in the selected ratio format.

- 4:3 - Standard
- 16:9 - Widest screen

GOP (Group of Pictures)/ Sub GOP

This refers to a series of one or more coded frames, it is intended to assist in random accessing and editing. The frames are composed of sequences of intra frames (I frames), predicted frames (P frames) and Bi-directional frames (B frames). I frames are typically located in front of the group of pictures these are pictures that are used as reference points in the GOP. P frames are encoded from the past frames (or picture) recording only the differences between the current frame and the reference frame. B frames are encoded relative to the I frame and P frame giving it the maximum amount of compression by only recording the differences between those frames. B frames take the longest time to encode, followed by P frames and then by I frames. I frames consume the largest amount of space and produces the highest bit rate. I frames are also computationally demanding to decode, this is a none issue if the same machine is used for encoding since encoding is more computationally intensive than playback.

A smaller GOP value tends to produce videos that have better response to movement, since the I frames are closer together, but this would result in a lower compression rate. In encoding you can select different values for the GOP, listed below are types of GOP values and the frames they produce.

Ex.

- GOP = 15; Sub_GOP = 3
The GOP structure is I BBP BBP BBP BB
- GOP = 5; Sub_GOP = 1
The GOP structure is I P P P P
- GOP = 1; Sub_GOP = 1
The GOP structure is I only

MPEG Format

MPEG (Moving Pictures Experts Group) is the latest compression technology for storing and retrieving video and audio information. Simply select the desired video format. MPEG-1 defines a medium bandwidth of up to 1.5 Mbps, two audio channels, and noninterlaced video. MPEG-2 defines a higher bandwidth of up to 40 Mbps, five audio channels, a wider range of frame sizes, and interlaced video. Primarily there are two common types of

MPEG video formats, MPEG-1 (Audio/Video) is used in VCD systems, and MPEG-2 (Audio/Video) is used in DVDs.

Capture Setting under Win NT

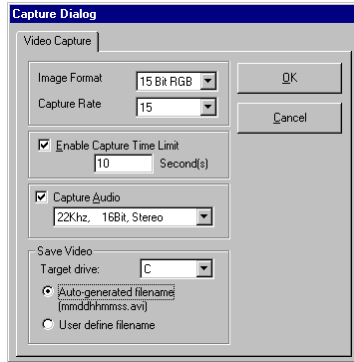


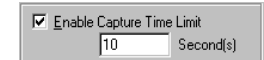
Image Format

Choose different quality format for your video clips. The higher the quality the larger the file size. Choose from the following:

15-bit RGB, 64K colors (high color mode)
24-bit RGB, 16M colors (true color mode)

Capture Rate

Select the number frames to be captured per second.

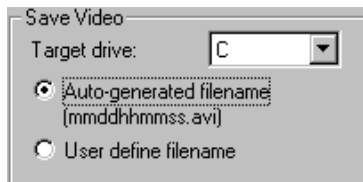


Specify the Length of Video and Time Duration

To specify the length of time your video capture will last, make sure the **Enable Capture Time Limit** check box is selected. Type in the number of seconds you want the video capture to last. We have typed "10" in our example. This means capturing will be automatically stopped after ten seconds.

Capture Audio

If you want to capture audio with your video sequence then make sure the **Capture Audio** check box is selected. Your computer should be equipped with a sound card.



Save Video

Choose a **Target drive** where to save the video clip. Select **Auto-generated filename** to create files automatically during capture. To specify your own filename for the captured clip, select **User defined filename**.

Capturing a Video Sequence

The **AVerMedia AVerTV Studio** application can let you capture live TV or video. You can record a portion of the TV program or video to your hard disk and save it as an AVI (VxD)/ Mpeg2 (WDM) file.



To capture live TV or video, click the **Record** button.





Playback Captured Video



To view the captured file, simply click on the **Playback Captured Video** button. A *TV Monitor* and *Control Panel* will then appear on your screen.



Playback Control Panel

The Playback Control Panel provides button controls for replaying the previous captured files, pause, open previously saved files and more.



Turn off	Close the program and switch back to VCR mode.
Play/Resume	Plays captured files/restores play after a pause.
Stop	Stops the current playback.
Pause	Pauses the current playback.
Open	Opens previously captured AVI/ Mpeg file.

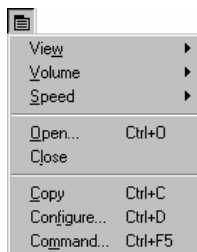


Playback Captured Video under Win NT



To view the captured file, simply do the following:

1. Click on the **Playback Captured Video** button.
2. A **Play Back** window will then appear and open the most recently captured file on your screen.



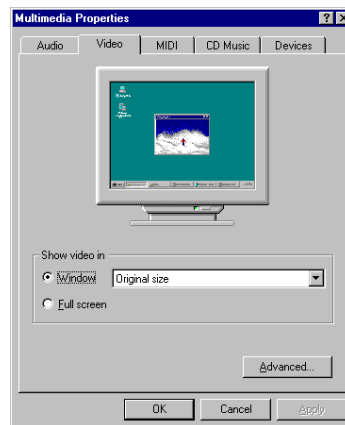
3. Click the **Configure** button to open up the *Configure* menu. Select **Open** from the *Configure* menu and choose the previously captured file you wish to open.
4. In the Play Back window, click the **Play** button. You will then be able to watch the portion of the TV program or video you previously captured.

Changing the Size of the Play Back Window

To change the size of the playback window:

1. In the *Play Back* window, click the **Configure** button to open up the *Configure* menu.
2. Choose **View** and select a size from the pull-down menu.
3. You can also choose **Configure** to change the size of the playback window. The following dialog box will then appear:

To select a window size, click the **Window** button and choose the size you want from the drop-down menu. Click **Full screen** if you want to view the captured image in full screen.





Copy an Image

To copy an image from the captured TV program or video and paste it to the Windows application you are working with, do the following:

1. Click the **Play** button to playback the captured TV program or video. The **Play** button then becomes the **Stop** button.
2. When you see the image you want, click the **Stop** button.
3. Choose **Copy** from the *Configure* menu.
Change to your desired Windows application and choose **Paste** from the **Edit** menu of the application. The image will be pasted into the document you are working with.



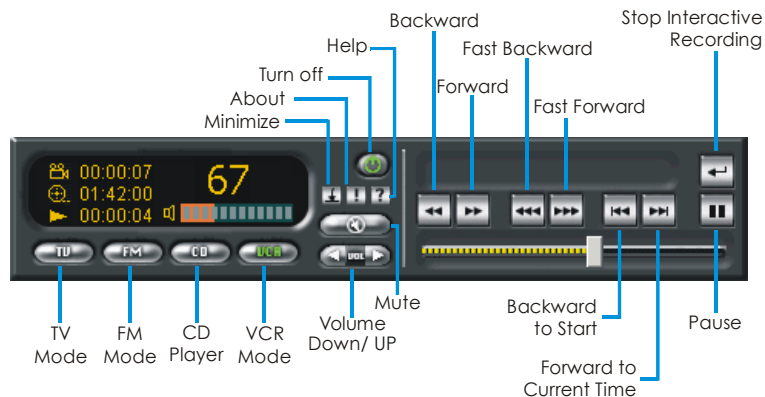
CHAPTER 11 I-Record(WDM)



I-Record is a two-way function that records and saves your favorite program in Mpeg format and at the same time, it allows you to review the recorded file.

The I-Record Control Panel

The I-Record Control Panel provides button controls for recording, playback recorded file while recording, adjusting volume and more.



Stop Interactive Recording

Close the program and switch back to VCR mode.

Forward

Click to move forward 10 sec from the replaying recorded time.

Backward

Click to move backward 10 sec from the replaying recorded time.

Fast Forward

Click to move forward 20 sec from the replaying recorded time.

Fast Backward

Click to move backward 20 sec from the replaying recorded time.

Backward to Start

Click to return to the beginning of the recorded time.

Forward to Current Time

Click to move to the actual recording time.