

## Abort Button

This button sets the GlobalPrinterAbortFlag variable which will be detected by the next **Processmessages** call in the HandlePrint method. This causes the **Printer.Abort** method to be called and allows closing the dialog prematurely if needed.

## About CC Print Dialog

CC Print Dialog is provided by CIUPKC Software. Thanks for all the fish, and we apologize for the inconvenience.

## Available Printers ComboBox

This combobox shows all available printers on the system. By making a selection here, and then pressing the Set Default Button, a new default printer is installed in Windows.

**Note: If the printer is not currently available, attempting to print to it may hang your system!**

## Close Button

This button closes the dialog box. It will not function if a print process is running; press the Abort Button first if needed.

# Contents

Main Dialog

Available Printers ComboBox

Set Default Printer Button

Print Button

Print to File Button

Orientation RadioGroup

Fonts Button

Setup Button

Print Manager Button

Close Button

Abort Button

Screen Dump Button

Print Preview Button

Help Button

HandlePrint method

HandleScreenDump method

HandlePrintPreview method

About CC Print Dialog

## Fonts Button

This button brings up a fonts dialog. This dialog is set to show only the fonts available on the current printer. Since most printers use GDI fonts and accept graphics output, this will be the same as the screen display. In the case of some printers, however, extra fonts may be available, or fewer if the printer is not graphics-capable (See the Printer Capabilities Display.)

# GlobalPrinterAbortFlag

This flag is set by the Abort Button. If true, it will cause a call to Printer.Abort rather than Printer.EndDoc.

# HandlePrint

**procedure HandePrint( PrintToFile : Boolean);**

This method is intended to be overridden by developers. It assume the programmer will make calls to the **Printer.Canvas** to print information. When done, a **Printer.EndDoc** is called unless the PrintToFile parameter is true, in which case a **Printer.Abort** is called since it is assumed no actual printing is desired. *What is printed is entirely up to the developer.*



## HandlePrintPreview method

This method is an example, and shows how to display a bitmap on a scaled representation of the page. It does not take into account a landscape printer setting or other considerations, but is provided as an example only.

## HandleScreenDump method

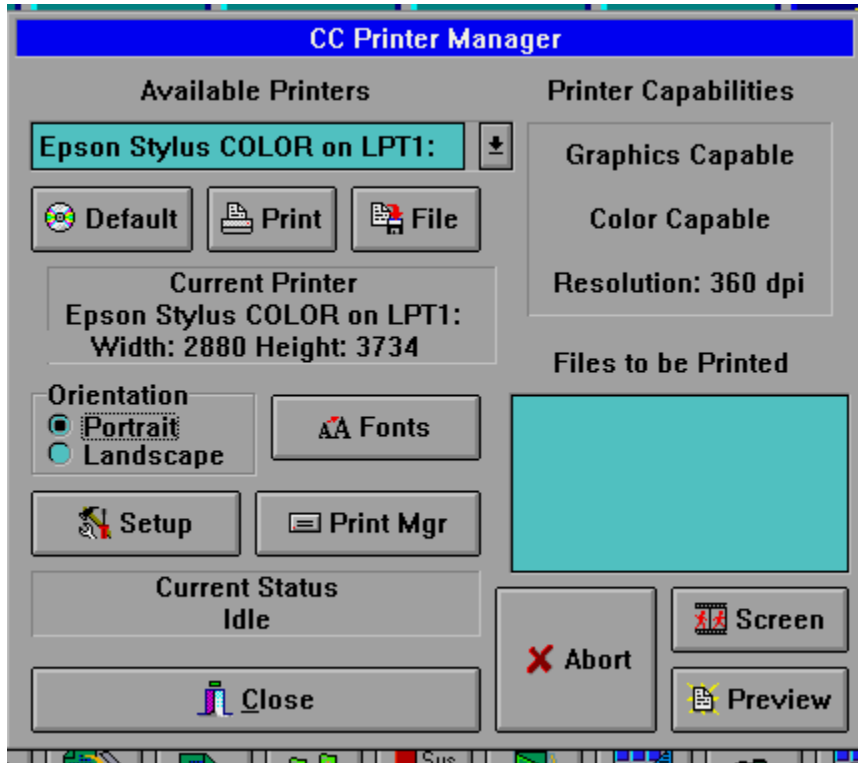
This method does a screen dump by capturing the background canvas and copying it to the printer canvas. A useful enhancement would be to make the printer dialog invisible and do a delay prior to the capture.

## Help Button

This button takes the user to the Main Dialog help item.

## Main Dialog

The CC Printer Dialog is an easy way to control most aspects of printing in Delphi. Click on the hot spots on the diagram below for basic help on each control area of the dialog. Then use the provided jumps to go to detailed help on each control.



## Orientation RadioGroup

This radiogroup sets the default printer's orientation between **poPortrait** (down the length of the paper) and **poLandscape** ( down the width of the paper.) Changes will take effect at the next call to the Print Button.

**Note:** This property cannot be set while printing is in progress or a GPF will occur, probably crashing Windows!

## Print Button

This button starts a print job. It calls the **Printer.BeginDoc** method inside an exception handler block. It then calls HandlePrint, to allow user-defined printing capabilities. When the method ends, it checks to see if the GlobalPrinterAbortFlag variable is true, and if so calls **Printer.Abort**; otherwise it calls **Printer.EndDoc** to send the document to the selected printer. If an error occurs during the basic printing (usually during the EndDoc call) then the message will be displayed in the Printer Status Display and a reraising will allow the system's error handler to take over and deal with the error. If a retry is possible it will occur prior to the completion of EndDoc and no special handling is needed.

**Note: If print manager is being used, or a custom spooler, errors will not appear here but in those applications instead. Print Manager can be accessed via the Print Manager shell button.**

## Print Manager Button

This button shells out to the Print Manager application. This is useful to check the status of print jobs in the queue and make changes. (Windows 3.1 does not allow other applications to access the Print Queue. Windows 95 does.)

## Print Preview Button

This button calls the example method [HandlePrintPreview](#), which basically shows the results of a screen dump on a simulated page. It is intended to be overridden by custom methods.



## Print to File Button

This button behaves similarly to the Print Button, except that output is directed to a file. Since this is also a custom behavior, the same HandlePrint method is used except that the PrintToFile parameter is set to true.

## PrintToFile

This parameter of the HandlePrint event handler is used to signal that printing should be to a file rather than the printer. It is up to the custom handler to define the way this flag is implemented. In the default dialog, the screen dump is called and printed to a file.

## Screen Dump Button

This button calls the HandleScreenDump method via some pointer switching. This method does a copy of the background bitmap and then sends it to the default printer.

## Set Default Printer Button

This button sets the printer currently selected in the Available Printers Combobox as the system default printer. It will automatically rescan the Printer Display and Printer Capabilities Display areas when this is done.

**Note:** This button does not check to see if the printer is actually available.

## Setup Button

This button brings up the Printer Setup common dialog. Since it is entirely a system dialog, settings will be made internally rather than having to be parsed by the program.

## The Abort Button

This button aborts a running print activity. For more information see [Abort Button](#).

## The Available Printers Combobox

This combobox displays all available printers on the system. The printer selected here is used when the Set Default Button is pressed. For more information, see Available Printers Combobox.

## The Close Button

This closes the dialog. For more information see [Close Button](#).



## The Current Printer Display

This display shows the name and port of the **default** printer. It also shows the **current page size** in pixels.

## The Files To Be Printed ListBox

This is an optional listbox which can be used to display a queue of files to be printed, which can then be accessed via the HandlePrint method.

## The Fonts Button

This button brings up the fonts dialog for the printer. For more information see [Fonts Button](#).

## The Orientation RadioGroup

This radiogroup controls the printer's orientation setting. For more information see [Orientation RadioGroup](#).

## The Print Button

This button starts a print job. It calls the HandlePrint event handler, which is written outside the dialog by the developer. For more information, see Print Button.

## The Print Manager Button

This button shells out to the Print Manager. See [Print Manager Button](#) for more information.

## The Print Preview Button

This button shows a sample preview of a screen dump. For more information see [Print Preview Button](#).

## The Print Screen Button

This button performs a Print Screen. For more information see [Screen Dump Button](#).



## The Print To File Button

This button prints to a file rather than to the printer. For more information, see [Print to File Button](#).

# The Printer Capabilities Display

This display shows the capabilities of the default printer:

**Graphics Capable** means the printer can display graphics. **Line Printer** means it cannot.

**Color Capable** means the printer can display color. **Monochrome** means it cannot.

**Resolution** is the current dots per inch setting of the printer. If more than one resolution is available, it can be set via the Setup Button.

## The Printer Status Display

This display shows the current status of the printer. If nothing is being printed it shows **Idle**. If printing is in progress, it shows **Printing...** If an error occurs it will show the **name of the error** in red. If an abort has been signalled it shows **Aborting...**

## The Set Default Printer Button

This button sets the default printer on the system to the selection in the Available Printers Combobox. For more information, see Set Default Printer Button.

## The Setup Button

This button brings up the Printer Setup dialog box. For more information see [Setup Button](#).



