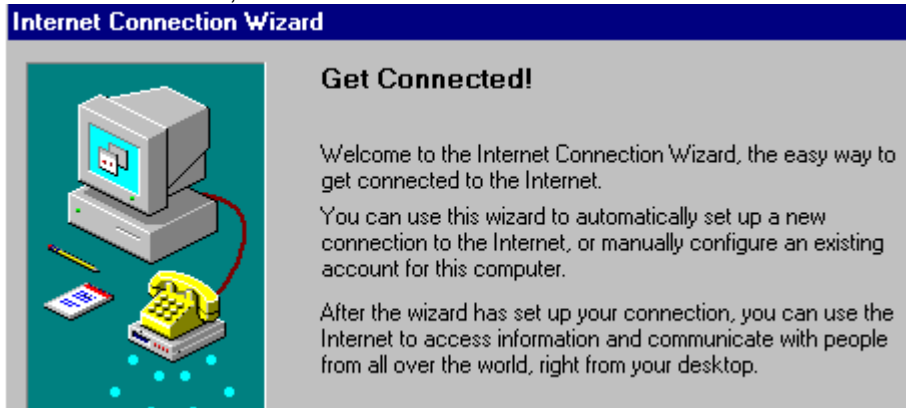
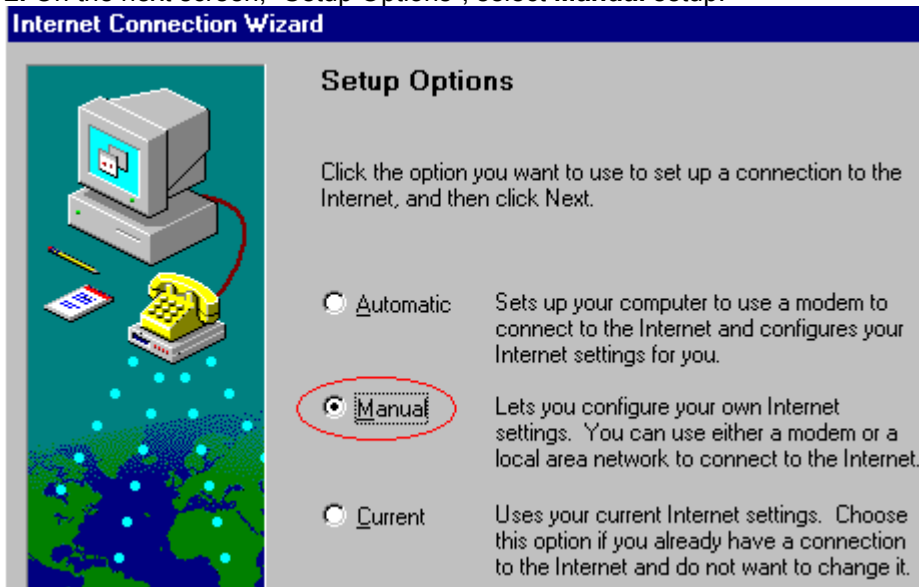


Configuration Instructions

1. Configuring your PC to access the Telstra On Australia Service is easy using the Microsoft Internet Setup Wizard. To start the Wizard, click the **Start** button on the Task Bar, then select **Programs**, **Accessories**, **Internet Tools** and finally, the Icon titled **Get on the Internet**. This will start the Internet Connection Wizard, as below.



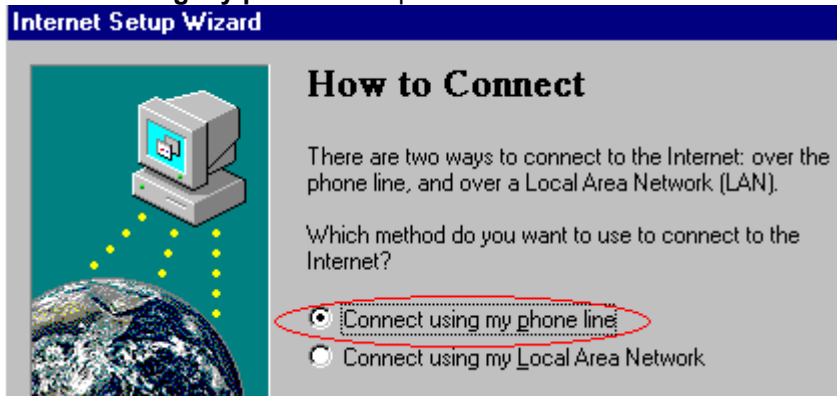
2. On the next screen, "Setup Options", select **Manual** setup.



3. The Internet Connection Wizard now decides it needs help, so it starts the Internet Setup Wizard!



4. Most people will be using a **Modem** to connect to the Internet. If this is true for you, check the **Connect using my phone line** option.



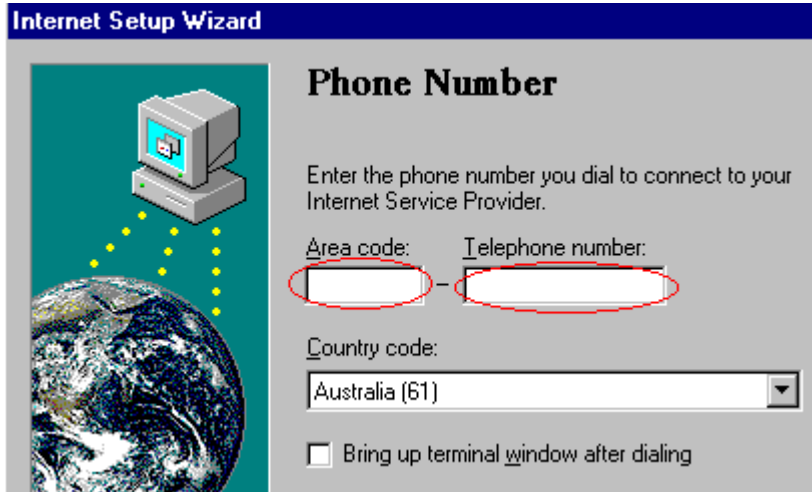
5. The Wizard now wants to know if you wish to use Microsoft Exchange to read your Internet Mail or some other mail program. If you installed Microsoft Internet Mail when you installed Internet Explorer, select **No**, Mail will be setup later.



6. Type a **Name** for the Internet connection object you are about to create.

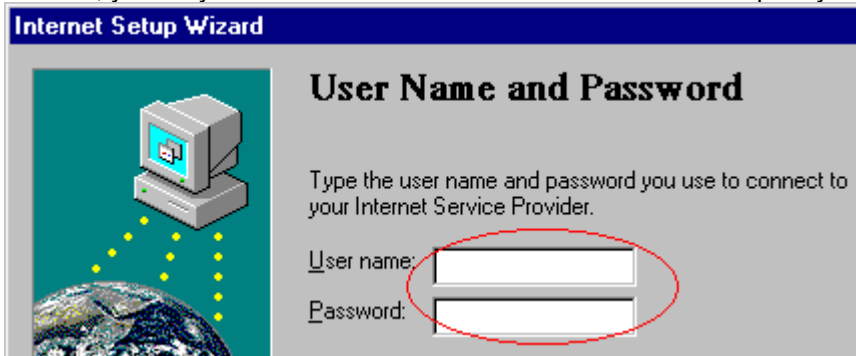


7. Enter the **Area Code** and **Telephone Number** of the On Australia POP (Dial-In Point) you wish to call.




8. Enter the **Username** and **Password** of your existing On Australia account.

Please Note: Entering both your Username and Password here will allow anyone using your PC to connect to the Telstra On Australia service without entering your Password. If your PC is not in a secure location, you may wish to leave the Password field blank and explicitly enter it each time you connect.

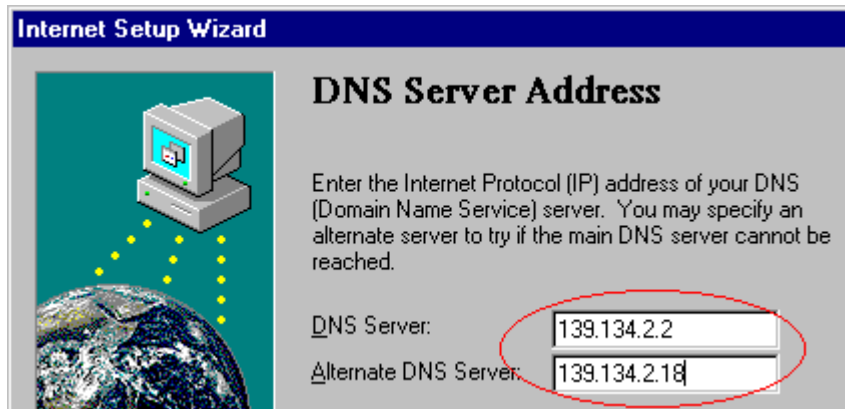


9. The Telstra On Australia Service automatically assigns your PC an address each time you connect.



10. Domain Name Servers **DNS** are devices which perform translation between the numeric address's which are used by computers and the names which are more commonly used by Internet users.

The On Australia DNS's are **139.134.2.2** and **139.134.2.18**, enter these address's as shown.



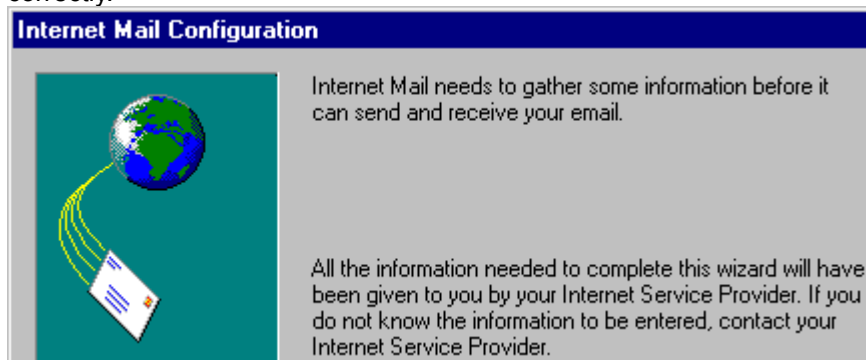
11. This ends the initial connection configuration step, click **Finish**.

Once the Wizard has finished, you will be able to connect to the Internet by double-clicking the Icon titled **The Internet** on your desktop.



Internet Mail Configuration

12. The first time you run Internet Mail, the Internet Mail Setup Wizard will help you configure Mail correctly.

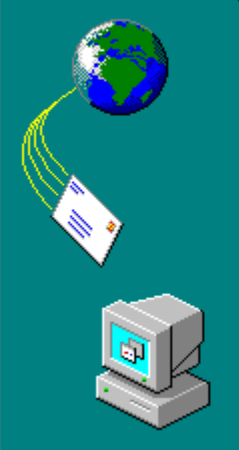


13. Enter your Name and E-Mail Address.

The Name field will appear in the "From:" line of E-Mail that you send. It is usual to set this to your "friendly" or "real" name. (eg: John Smith)

The E-Mail Address field allows people to reply to your messages. Your **E-Mail Address** is your **Username**@onaustralia.com.au (eg: J-Smith@onaustralia.com.au) It is important to ensure that you enter your E-Mail Address correctly, if you get this wrong, people will not be able to reply to your messages.

Internet Mail Configuration



When you send email, your name will appear in the From field of the outgoing message. Enter your name as you would like it to appear (e.g. John Smith).


Name:

Your email address is the address other people use to send you email messages. It may consist of your POP3 account name, an "@" sign, and the domain name of your server. Enter your email address (e.g. j-smith@isp.com).

Email Address:

14. The On Australia Mail server's address is mail.onaustralia.com.au, enter this address in both the Incoming and Outgoing fields.

Internet Mail Configuration



A POP3 server is the server that is used for your incoming mail. Enter the name of your POP3 server.

Incoming Mail (POP3) Server:

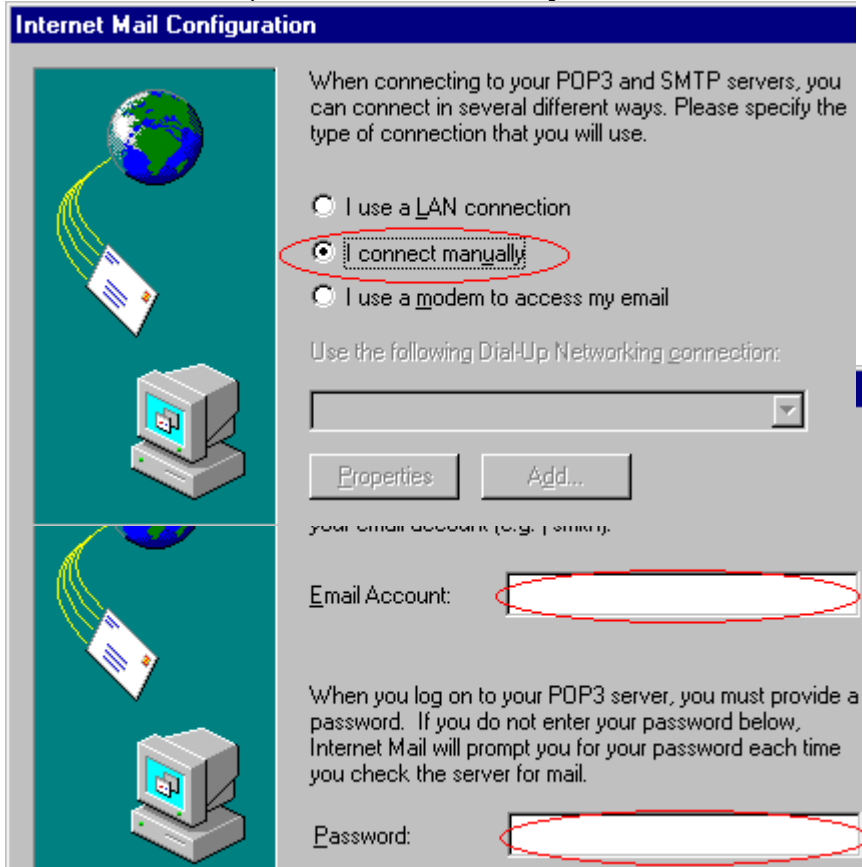
An SMTP server is the server that is used for your outgoing mail. Your SMTP server may have the same name as your POP3 server. Enter the name of your SMTP server.

Outgoing Mail (SMTP) Server:

15. Enter your On Australia **Username** and **Password** here.

Please Note: Entering your Username and Password here will allow anyone using your PC to read your electronic mail without entering your Password. If your PC is not in a secure location, you may wish to leave the Password field blank and explicitly enter it each time you connect.

16. Select how you wish to connect. If you normally use both the Web and E-Mail each time you connect, check the option, **I connect manually** as shown here.



Internet Mail Configuration

When connecting to your POP3 and SMTP servers, you can connect in several different ways. Please specify the type of connection that you will use.

☐ I use a LAN connection

☒ **connect manually**

☐ I use a modem to access my email

Use the following DialUp Networking connection:

[Dropdown menu]

[Properties] [Add...]

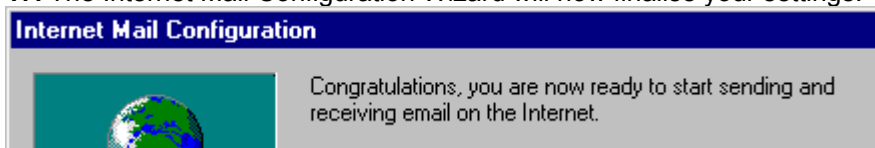
your email account (e.g. jsmith@)

Email Account: [Text box]

When you log on to your POP3 server, you must provide a password. If you do not enter your password below, Internet Mail will prompt you for your password each time you check the server for mail.

Password: [Text box]

17. The Internet Mail Configuration Wizard will now finalise your settings!



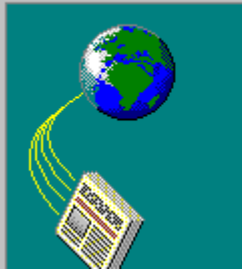
Internet Mail Configuration

Congratulations, you are now ready to start sending and receiving email on the Internet.

Internet News Configuration

18. The first time you run Internet News, the Internet News Configuration Wizard will assist you configure it!

Internet News Configuration



Internet News needs to gather some information before you can read news on the Internet.

Internet News lets you communicate in discussion forums, called newsgroups, with people who have similar interests.

19. Enter your **Name** and **E-Mail Address**. Your Name will appear in the "From:" line of messages your post in UseNet News Groups. Your E-Mail Address will let people send replies to you directly via E-Mail instead of replying to the entire News Group. Please be sure to enter your full E-Mail address here. Your E-Mail Address is your **Username@onaustralia.com.au**.

Internet News Configuration



When you post an article to a newsgroup or send an email message, your display name will appear in the From field. Enter your name as you would like it to appear.

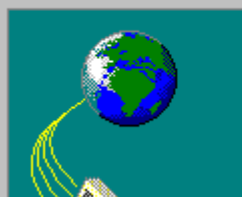
Name:

People can reply to your news articles either by posting another article or by sending you an email message. People use your email address to reply to your article via email.

Email Address:
(e.g. johnsmith@microsoft.com)

20. The On Australia News Server's address is **news.onaustralia.com.au** enter this here. Our News Server does **not** require you to logon. Leave the box "My news server requires me to logon" **blank**.

Internet News Configuration

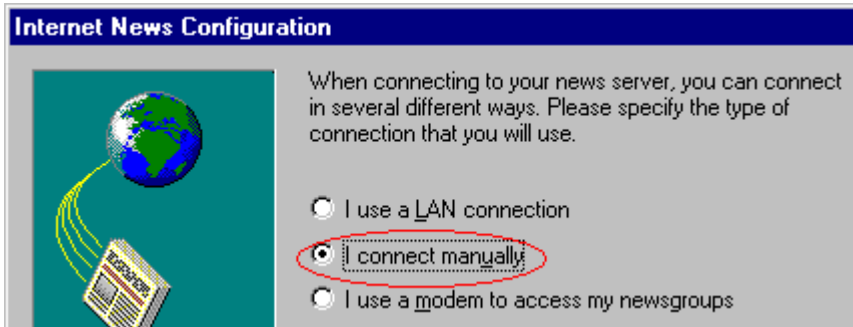


A news server is the computer to which you connect to read news. Enter the name of your news server (e.g. "news-server").

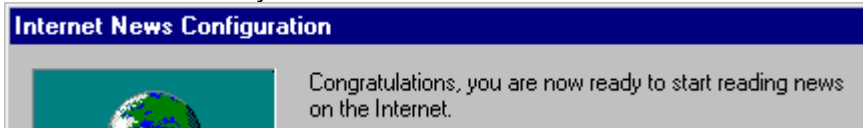
News Server:

☐ My news server requires me to logon

21. Select how you wish to connect. If you normally use the Web or E-Mail and News each time you connect, check the option, **I connect manually** as shown here.



22. You are now ready to read Internet News!



23. The first time you connect to the News server, you will be told that you are not subscribed to any News Groups and be given the option to see a list of available groups. Select **Yes** to get a current list of available News Groups. This will take a couple of minutes.

