

Instant Drive Access v1.25

Welcome to Instant Drive Access help.

Contents:

What is Instant Drive Access

Whats new in this version

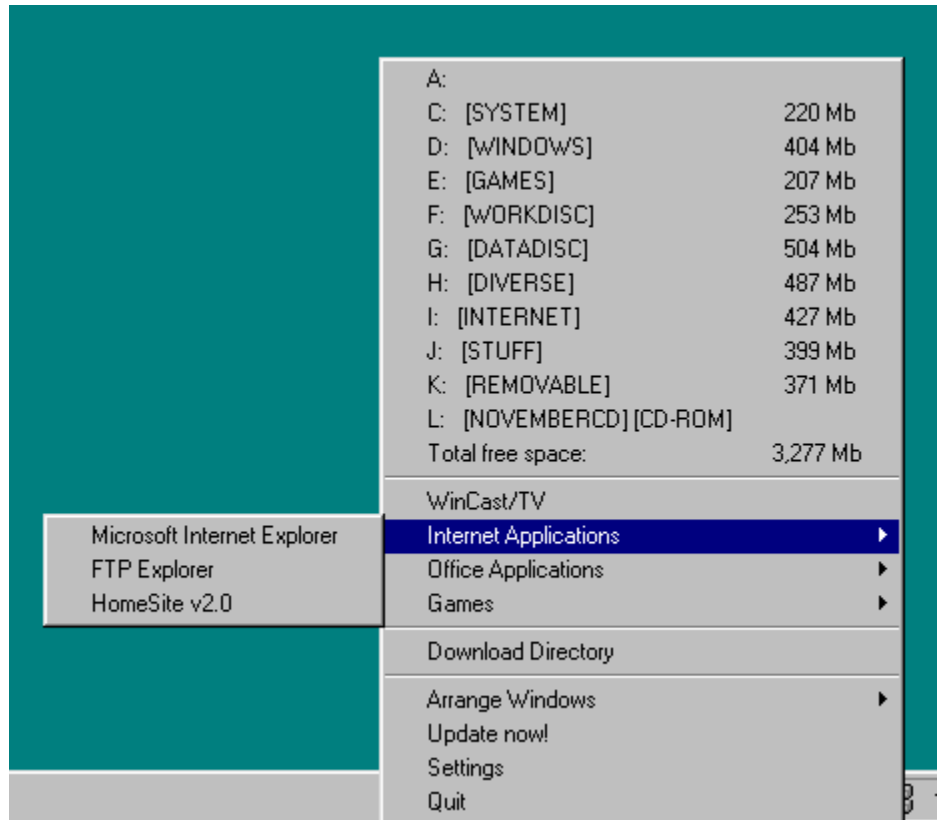
Configuration

Contacting the author

What is Instant Drive Access.

Instant Drive Access is a little utility which places itself in the system tray of Windows 95 or Windows NT 4.0.

When you rightclick the I.D.A. icon you should see something like this:



As you can see, you have all your drives in the menu for instant access (thus the name) without having to minimizing open windows to get to "My Computer".

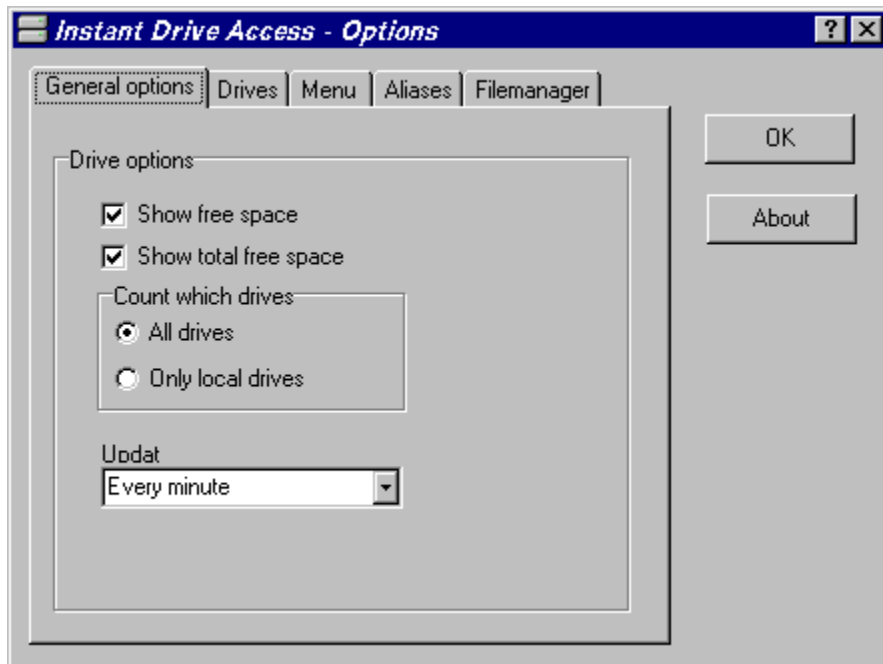
You can also add your own favorite programs to the menu also in submenus.

And you can add aliases to your favorite folders.

Whats new in this version (v1.25 bugfix release).

- Bug fixed when moving around items in menus and sub-menus.
- General bug-fixes.

Configuration General options



In this window you specify the general settings for Instant Drive Access.

Contacting the author

You can reach the author at the following E-mail address:

jel@post1.tele.dk

or by snail-mail at:

**Jesper Lauridsen
Frederiksdalsvej 8B, 2 tv.
DK-2830 Virum
Denmark**

Here you can choose whether you will see free space for each drive or not.

Here you can choose whether you will see the total free space or not.

Here you can choose between:

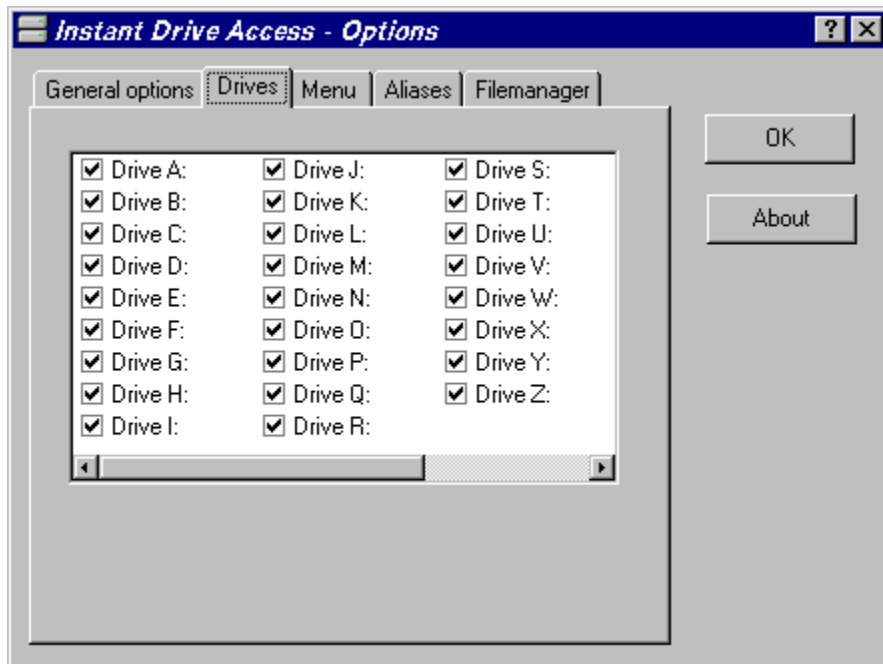
All drives All drives' free space will be counted.

Only local drives Only local drives will be counted.

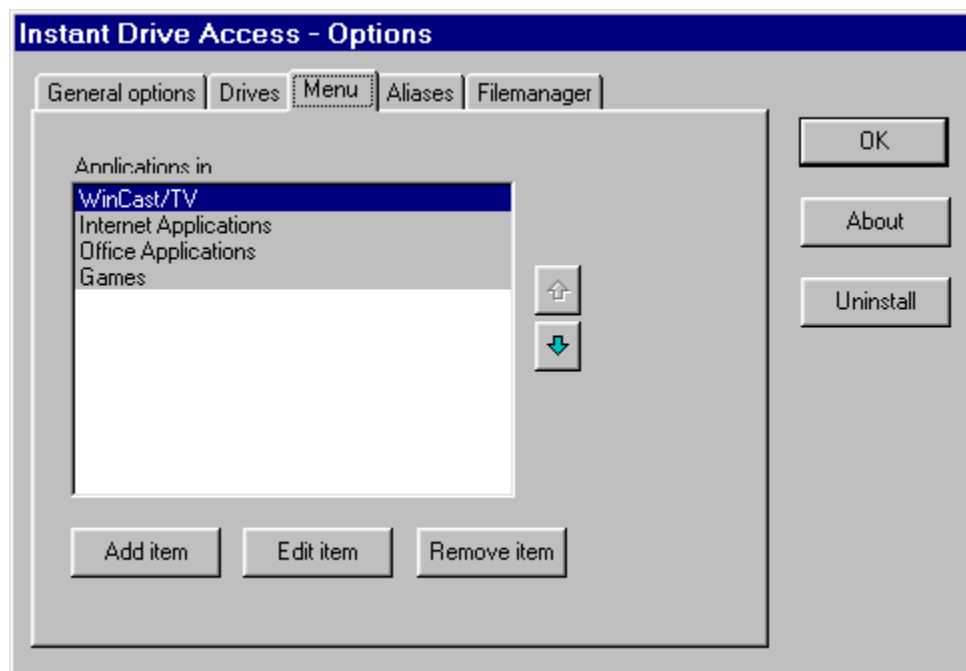
Here you specify how often the free space should be updated.

Never	Will never update the free space.
Every minute	Will update free space every minute.
Every 5 minutes	Will update free space every 5 minutes.
Every 10 minutes	Will update free space every 10 minutes.

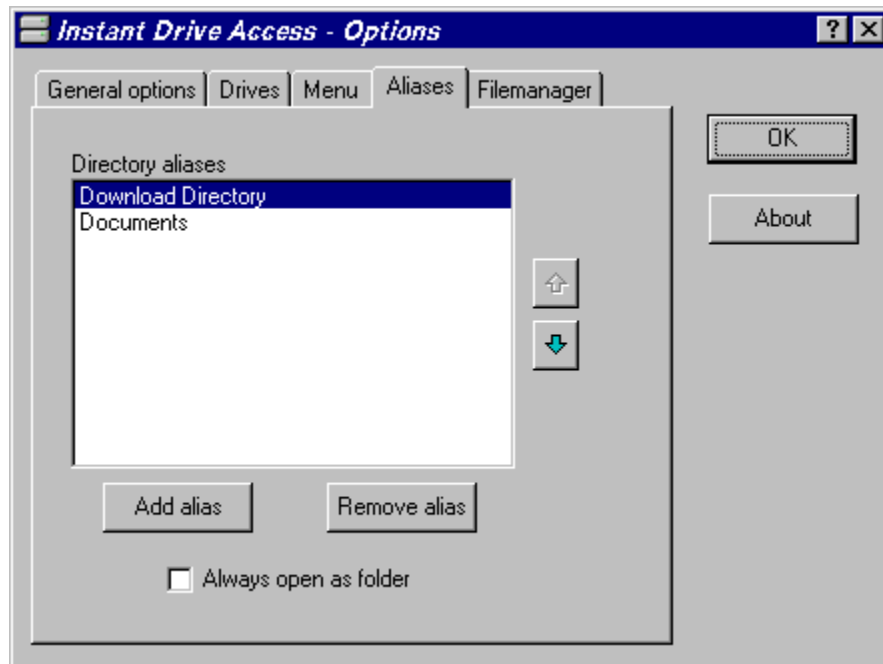
Configuration Drives



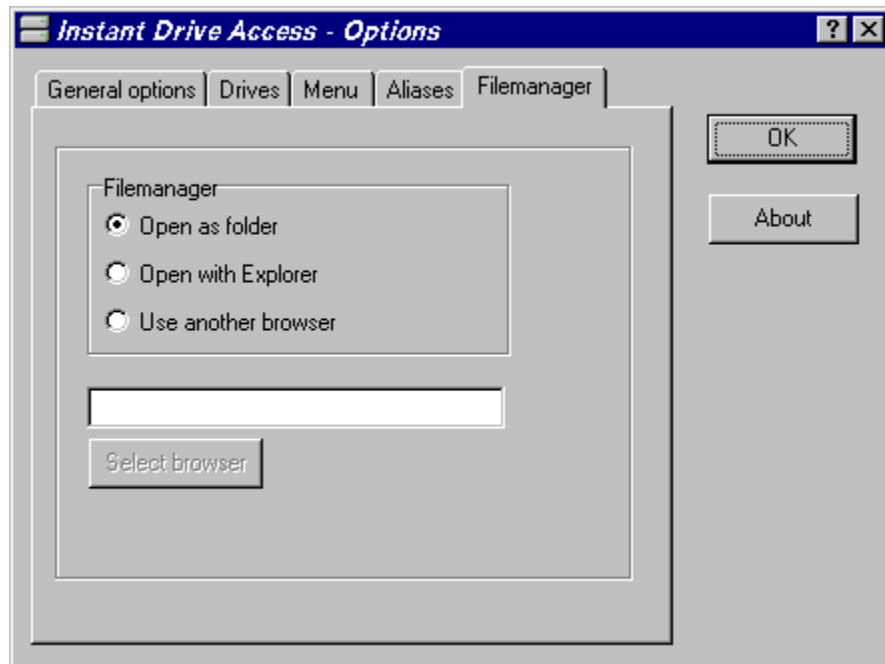
Configuration Menu



Configuration Aliases



Configuration Filemanager



Opens the drive like a folder

Opens the drive with Explorer

Opens the drive with a Filemanager you decide.

When you press this button you will be able to select which browser/filemanager you want to use.

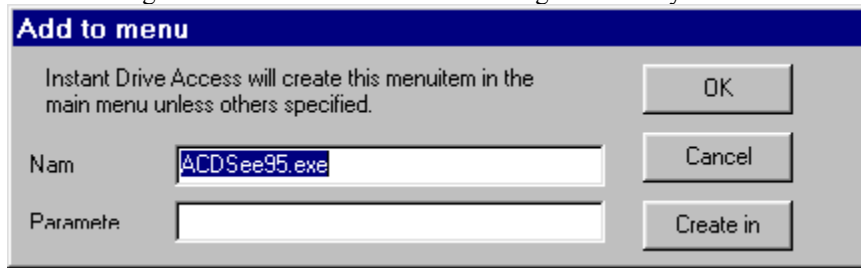
Note: Will only be available when you have selected to use another browser than Microsofts.

Shows which programs you have put in the menu. The grey items indicates a submenu.

Move the selected item up or down.

Adding items to the menu.

After clicking the “Add item”-button and selecting which file you wish to add to the menu, you will see this screen



The screenshot shows a dialog box titled "Add to menu" with a dark blue header. The main area is light gray and contains the following elements:

- A text label: "Instant Drive Access will create this menuitem in the main menu unless others specified."
- A text input field labeled "Name" containing the text "ACDSee95.exe".
- A text input field labeled "Parameter" which is currently empty.
- Three buttons on the right side: "OK", "Cancel", and "Create in".

Remove the selected item from the menu.

Shows which aliases you have set up.

Moves the selected alias up or down

Add an alias to a directory.

Remove the alias from the menu.

Choose which drives Instant Drive Access should look for when looking for drives.

Edits the selected item.

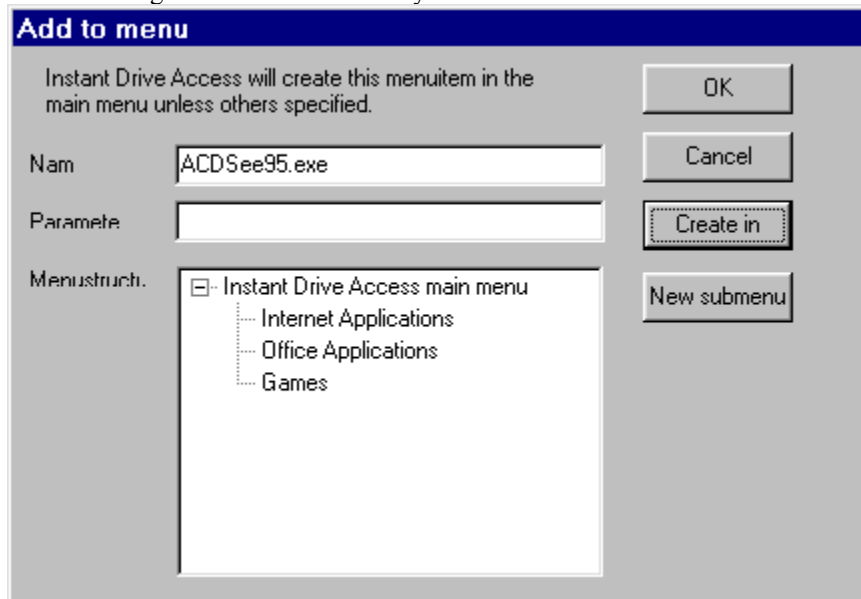
Select whether to open alias with the default filemanager or always open an alias as a folder.

Here you enter the name, that will appear in the menu. By default I.D.A. will use the filename.

Here you enter the parameters for the program (if any).

Adding items to submenus.

When clicking the “Create in”-button you will see this screen



The screenshot shows a dialog box titled "Add to menu" with a dark blue header. Below the header, a message states: "Instant Drive Access will create this menuitem in the main menu unless others specified." The dialog contains several input fields and buttons. The "Name" field is filled with "ACDSee95.exe". The "Parameters" field is empty. The "Menustruct." field shows a tree view with a checked box next to "Instant Drive Access main menu", which is expanded to show sub-items: "Internet Applications", "Office Applications", and "Games". On the right side, there are four buttons: "OK", "Cancel", "Create in" (which is highlighted with a dashed border), and "New submenu".

Add to menu

Instant Drive Access will create this menuitem in the main menu unless others specified.

Name:

Parameters:

Menustruct.:

- ☒ Instant Drive Access main menu
 - Internet Applications
 - Office Applications
 - Games

Buttons: OK, Cancel, **Create in**, New submenu

Select the submenu in which you will create the item (create a new one if you need to) and press the “OK”-button.

Here you can see your current menu-structure.

Pressing this button will give you a new submenu-item.

Shows the path and filename for the external browser.

