

# MYRIAD

---

## Administrator's Guide

Version 7.0

---

# Table of Contents

---

<u>1.0</u>	<u>INTRODUCTION</u>	<u>2</u>
<b>1.1</b>	<b>SYSTEM REQUIREMENTS</b>	<b>2</b>
<u>2.0</u>	<u>INSTALLATION</u>	<u>2</u>
<b>2.1</b>	<b>INSTALL DESIGN TRACKING (INVENTOR)</b>	<b>2</b>
<b>2.2</b>	<b>MYRIAD INSTALLATION PROCEDURE</b>	<b>3</b>
<b>2.3</b>	<b>MYRIAD BROWSER PLUG-IN</b>	<b>9</b>
<b>2.4</b>	<b>LICENSE MANAGEMENT</b>	<b>11</b>
2.4.1	NETSETUP	12
<u>3.0</u>	<u>CONFIGURING THE LICENSE SERVER</u>	<u>14</u>
<u>4.0</u>	<u>CUSTOMIZING MYRIAD</u>	<u>16</u>
<b>4.1</b>	<b>GENERAL COMMAND LINE ARGUMENTS</b>	<b>16</b>
<b>4.2</b>	<b>PREDEFINED SWITCHES</b>	<b>19</b>
<b>4.3</b>	<b>MYRUSER.INI AND MYRIAD32.INI FILES</b>	<b>20</b>
<b>4.4</b>	<b>DISABLING FEATURES THROUGH INI FILES</b>	<b>32</b>
<b>4.5</b>	<b>MYRDRV.INI</b>	<b>33</b>
<u>5.0</u>	<u>DOCUMENT STACK FILE FORMAT</u>	<u>33</u>
<u>6.0</u>	<u>TROUBLESHOOTING</u>	<u>36</u>
<u>7.0</u>	<u>CONTACTING INFORMATIVE GRAPHICS</u>	<u>38</u>

## 1.0 Introduction

Welcome to the MYRIAD Administrator's Guide! This document contains information on installing standalone and network copies of MYRIAD, MYRIAD's license management, the NetSetup utility for client machines, MYRIAD customization methods, and the Document Stack format.

### 1.1 System Requirements

MYRIAD supports office documents and raster formats, 2D vector, and 3D formats. ProE support is available as additional format options. The MYRIAD Browser Plug-in is an included option with all forms of MYRIAD. In order to use this plug-in, either Netscape or Internet Explorer is required to be installed on the client system. The following are the minimum recommended system requirements for running MYRIAD.

- Pentium 450 or higher (2D) or Pentium 1100 (3D)
- Windows 2000/XP and 2003 Server
- 75 MB hard disk space
- 128 MB RAM (2D) or 256 RAM (3D)
- 100 MB available swap disk space (500 MB if using 3D)
- OpenGL accelerated video card strongly recommended (3D only)

## 2.0 Installation

Once you have verified your machine meets the system requirements listed in **1.1 System Requirements**, you are ready to begin the MYRIAD installation. MYRIAD can be installed either on individual machines (standalone) or on a server machine (network). If you are installing a network copy of MYRIAD and wish to use the NetSetup utility (a zero-admin utility to create the necessary shortcuts, plug-ins, etc. on the end-user machines), see **2.4.1 NetSetup**.

**\*\*\*\*If you have a multi-user license key, you must install the server copy of MYRIAD on a Windows XP, 2000, or 2003 Server machine due to requirements of the MYRIAD License Server.**

MYRIAD no longer automatically installs Adobe Acrobat. If you plan to view PDF files with MYRIAD through Acrobat, you must install Acrobat before running this installation.

### 2.1 Install Design Tracking (Inventor)

You must install Autodesk Design Tracking version 8.0 or 9.0 if you would like MYRIAD to support Inventor 2D and 3D formats and do not already have the software installed. The installations are contained on your MYRIAD CD. **Note:** If you have an earlier version of Autodesk Design Tracking installed, you must uninstall that version and then run the Design Tracking 8.0 or 9.0 installation to properly view Inventor file formats.

1. Insert your MYRIAD CD into your CD-ROM and select the "Install Design Tracking" button

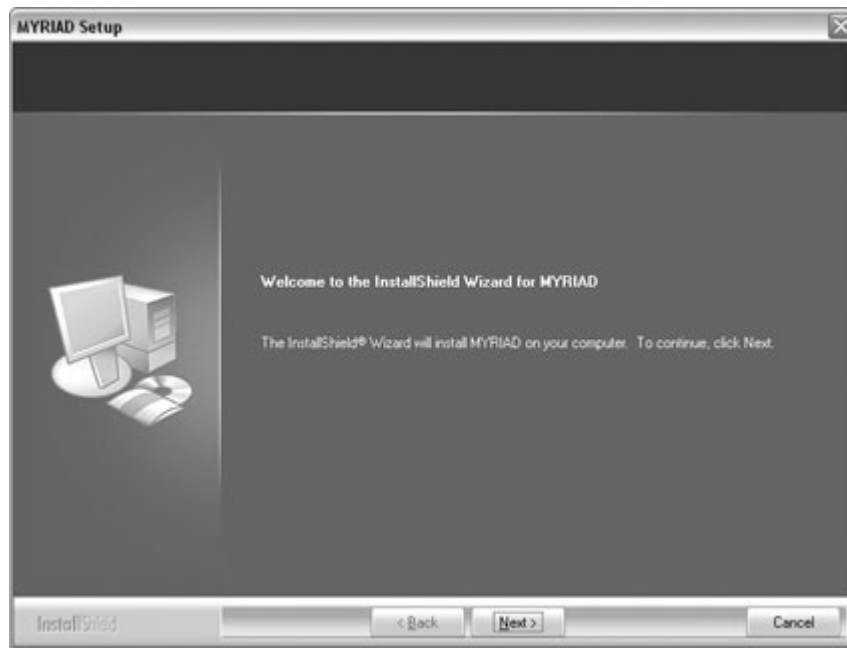
from your CD browser and then select which version of Design Tracking you wish to install. If you do not have autorun enabled, you can run **setup.exe** from the Inventor 8.0 or 9.0 directory of your MYRIAD CD. Uninstalling MYRIAD will not uninstall Design Tracking - they must be uninstalled separately.

2. Follow the on screen installation instructions.

## 2.2 MYRIAD Installation Procedure

1. Place the MYRIAD CD into your CD-ROM drive and select **Install MYRIAD 7.0** from the CD browser interface. (If you do not have autorun enabled, you can run **Setup.exe** from the Myriad70 directory of your MYRIAD CD.) The Welcome screen appears. Click **Next>**.

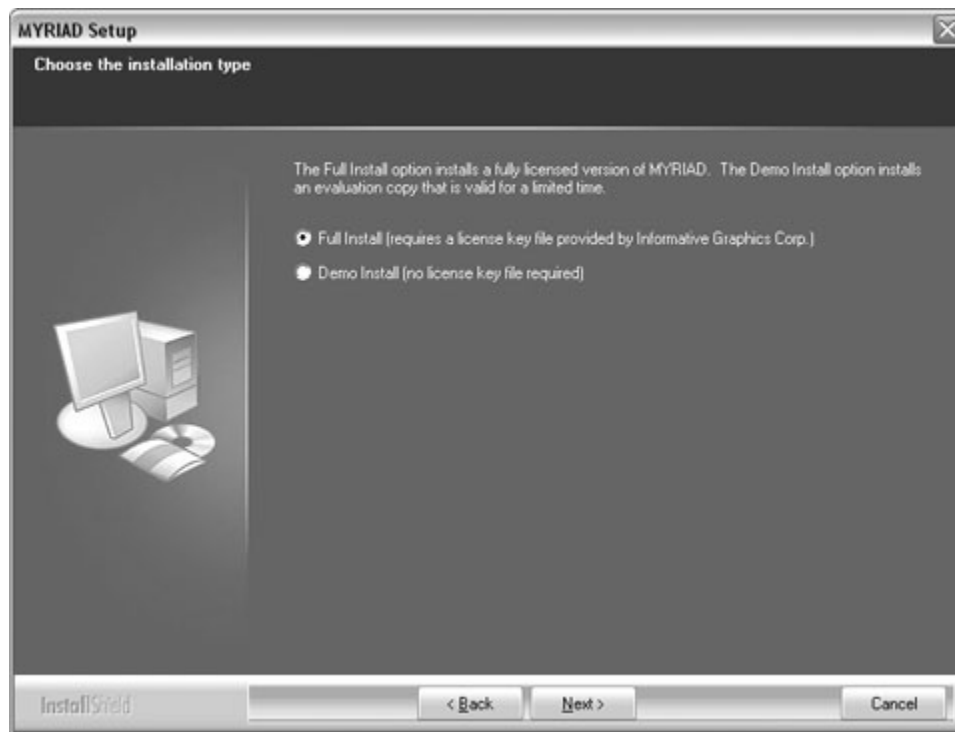
**Note:** If the current version of MYRIAD is detected on your machine, the Welcome screen appears displaying three installation options. Select **Remove** to uninstall all MYRIAD components, and then click **Next>** to execute the uninstall. When complete, eject and re-insert your MYRIAD CD and select **Install MYRIAD 7.0** from the CD browser again to continue with the installation (or run **setup.exe** from the Myriad70 folder). (If a previous version of MYRIAD is detected on your machine, a warning displays, as the installation of more than one version of MYRIAD is not recommended for anything but evaluation purposes. If you select to install an evaluation version, you will be prompted to choose a different directory than the one containing the previous version. You should not run the previous version while the evaluation version is installed.)



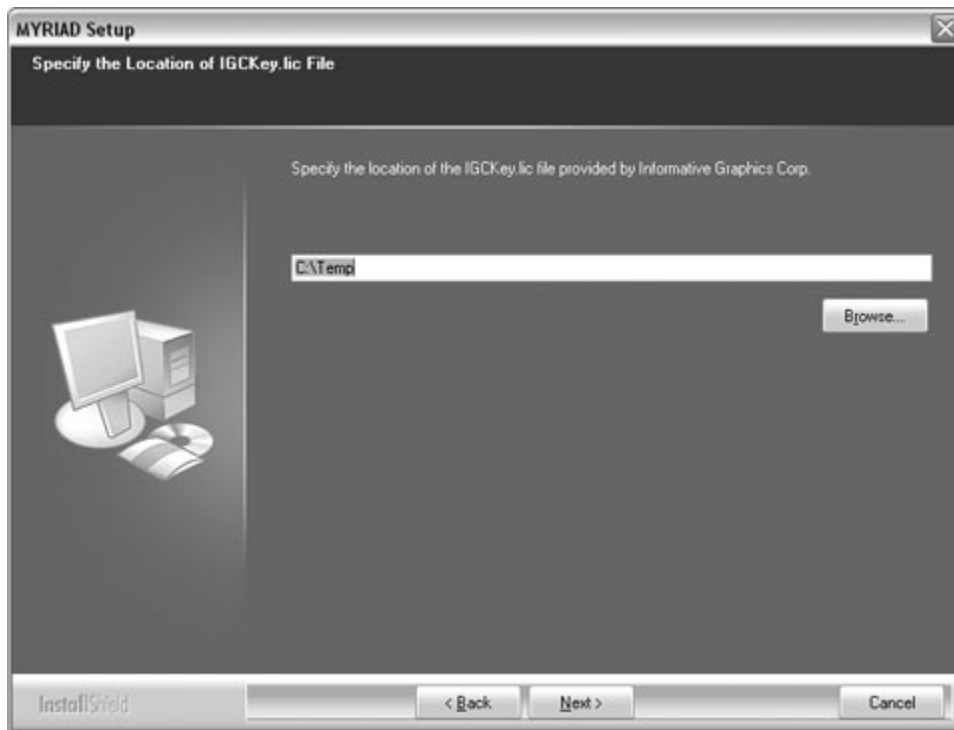
2. The Informative Graphics License Agreement screen appears. Click **Yes** to accept the license agreement and continue or **No** to exit the installation.



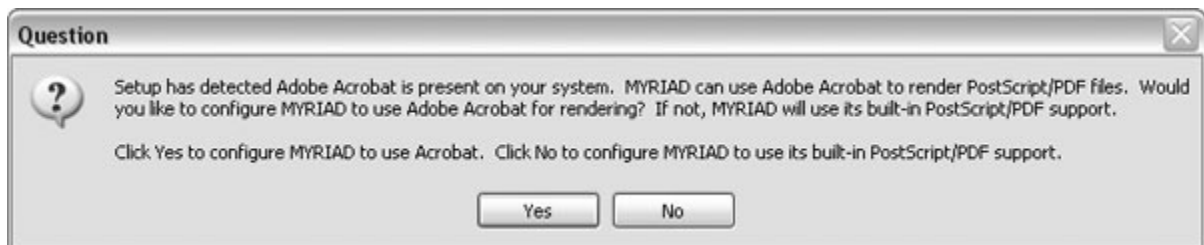
3. In the Installation type screen, choose whether you are installing a demonstration version of MYRIAD, or a fully licensed version. A Demo Install provides full MYRIAD functionality, but only for a limited time frame. If you are installing a licensed version of MYRIAD which does not expire, you must have obtained a valid serial number from IGC.



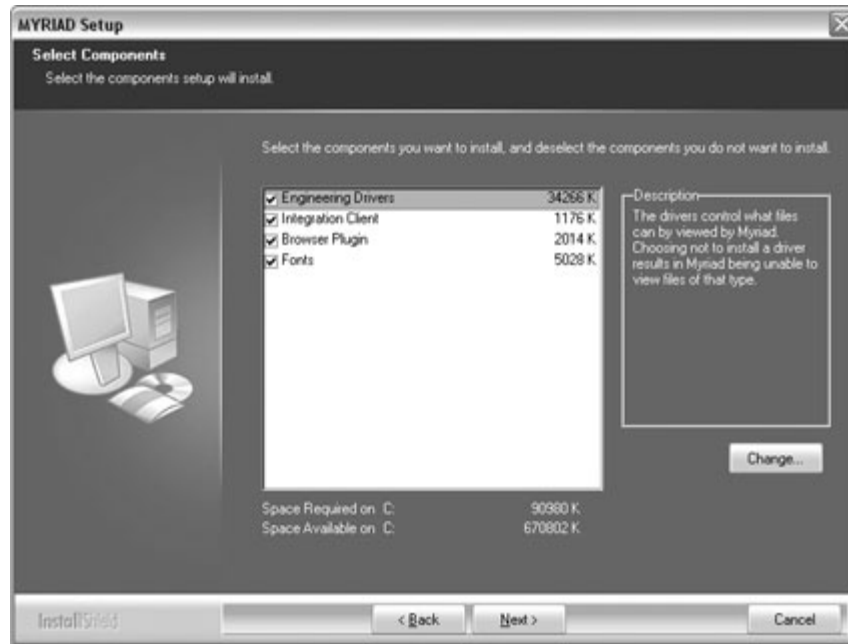
If you have chosen Full Install in the previous screen, you are prompted for a directory location where you have placed the *IGCKey.lic* file that you have acquired from Informative Graphics, Inc. If a valid license key is not found, only the demo install is allowed.



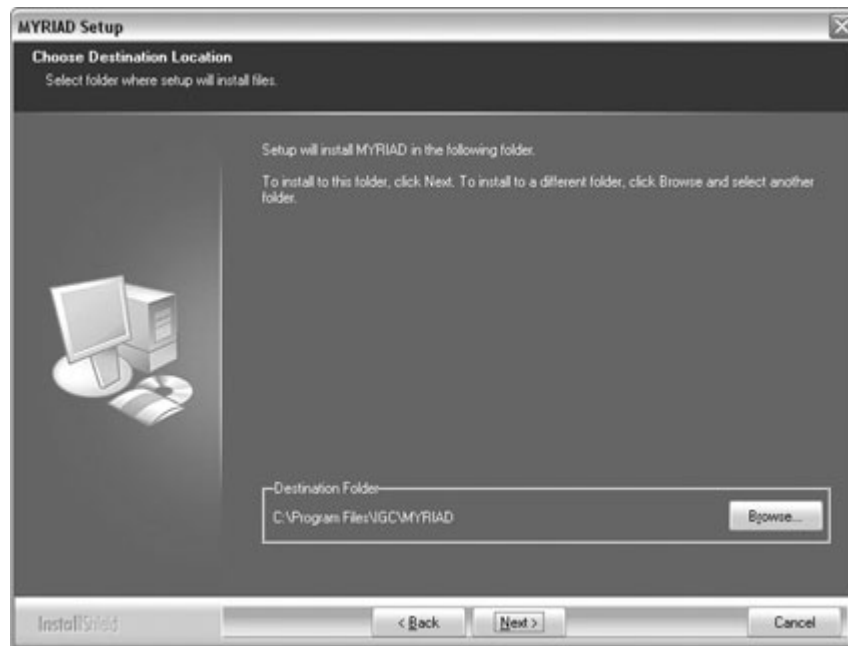
4. If Adobe Acrobat is detected on your system, the installation will prompt you as to whether you want to use it to view PDF files. Click **Yes** if you want MYRIAD to use Acrobat. Click **No** if you want MYRIAD to use its built-in drivers. This message only displays if Acrobat is present on your system. Otherwise, this message does not display and MYRIAD uses its built-in drivers.



5. The Select Components screen appears. The components that you are licensed to install display in the selection list. The **Drivers** selection controls which files MYRIAD is allowed to view. The **Fonts** selection controls which fonts are supported. Click **Change** to view a list of sub-components for the driver and font options listed to select specific components. You can clear the check box for any driver or font you don't want to install. The **Browser Plug-in** selection contains the MYRIAD Browser Plug-in installation. With the plug-in, you can launch MYRIAD from within Internet Explorer or Netscape. To run the Browser Plug-in setup, see section **2.3 MYRIAD Browser Plug-in** of this document. **Integration Client** installs the MYRIAD integration components. Select your desired components and click **Next>**.



6. The Choose Destination Location screen for MYRIAD appears. Click **Next>** to install the MYRIAD files to the displayed directory (or you can click **Browse...** to locate and select a different directory).



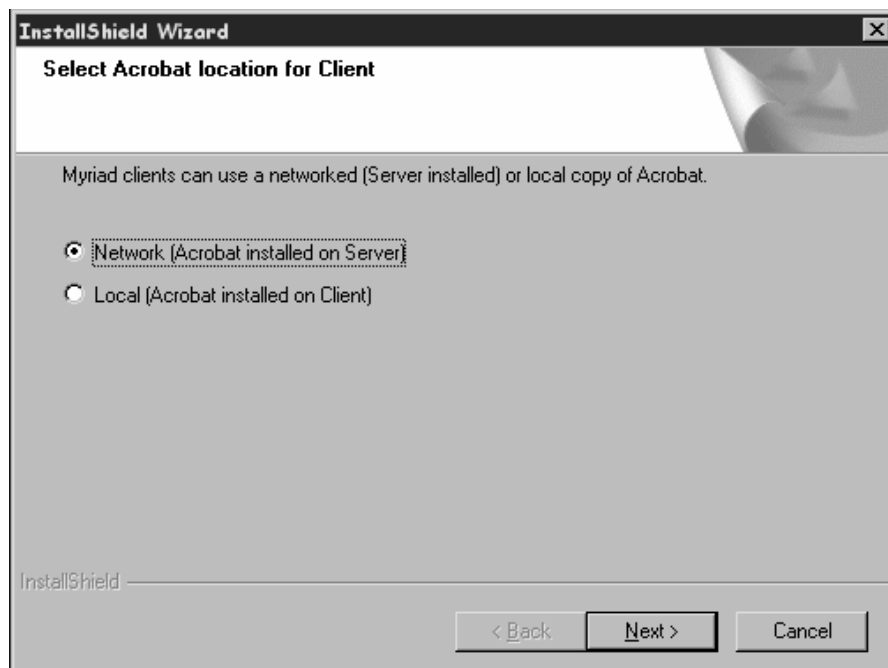
7. The Select Program Folder screen appears. Select the Program Folder where you wish the MYRIAD shortcuts to appear and click **Next>**. The selected Program Folder is created under **Programs** in the Windows 2000/XP or 2003 Server **Start** menu.



8. The MYRIAD files are installed.

If you have a standalone copy of MYRIAD, skip to Step 12.

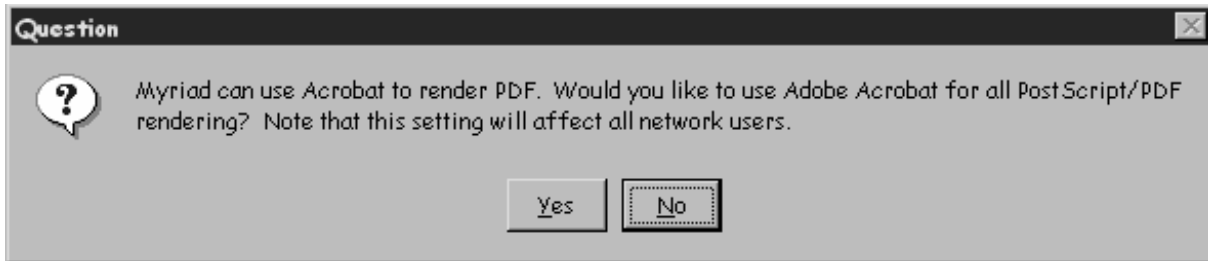
9. If you have a multi-user serial number, the Local or Network Adobe Acrobat screen appears asking if users will be accessing the network server copy of Acrobat or local copies of Acrobat on their own machines. Note that MYRIAD supports Acrobat 3.01 and higher. Select **Local** or **Network Installation** and click **Next>**. (See section 2.4 for licensing considerations.)



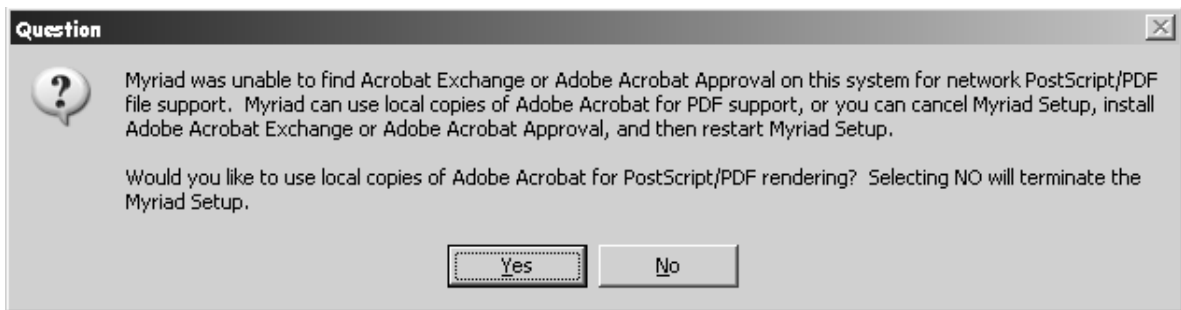
10. If you have selected Network and Adobe Acrobat is detected on your Server, the installation will



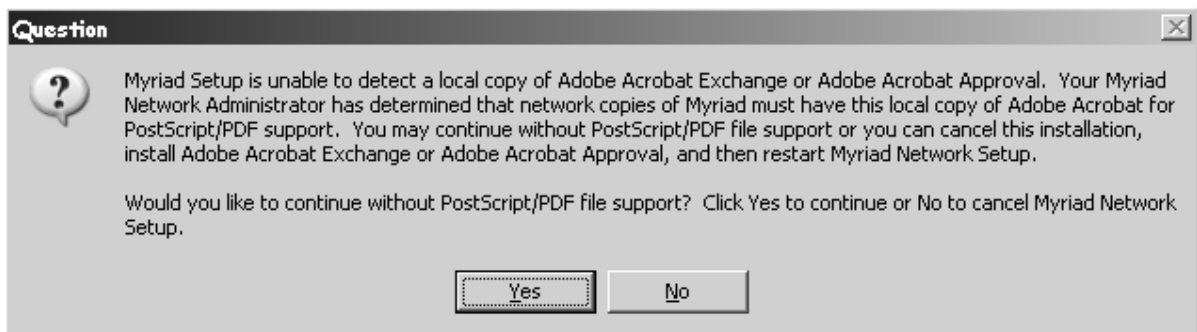
prompt you as to whether you want users to access it to view PDF files. Click **Yes** if you want MYRIAD to use Acrobat. Click **No** if you want MYRIAD to use its built-in drivers.



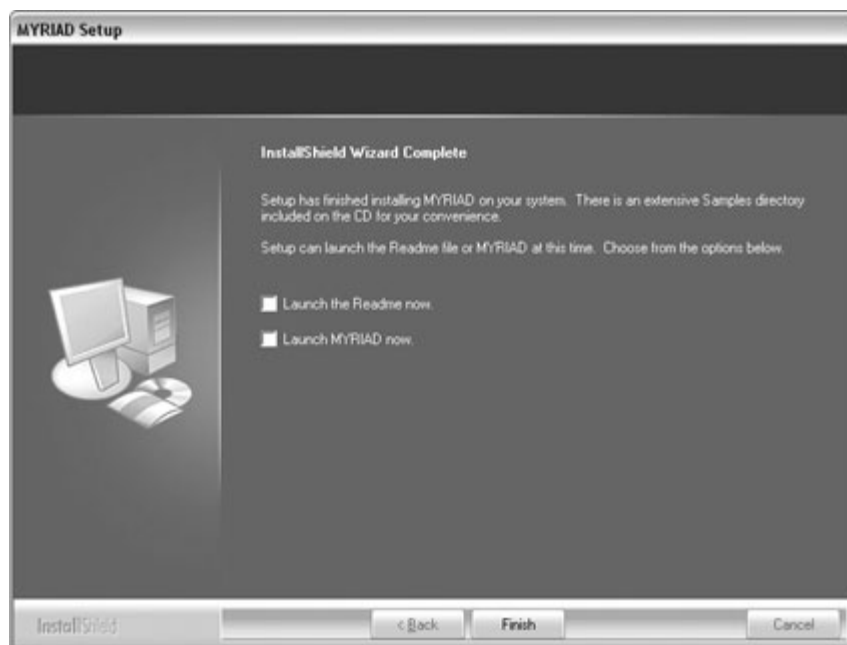
If setup does not detect Acrobat on your system and you do not want network users to use Acrobat for viewing PDF files, click **Yes** at the below prompt to continue installing MYRIAD without network Acrobat support (clients can use local copies). Click **No** if you would like to abort the MYRIAD installation and install a copy of Acrobat on your Server. When complete, you can begin the MYRIAD installation again from step #1.



11. If you have selected that network clients use local copies of Acrobat (during step #9), the following message appears on the client machine during a network installation of MYRIAD if a local copy Acrobat is not detected. Users can choose to install without Acrobat support, or they can terminate the network setup and install a local copy of Acrobat.

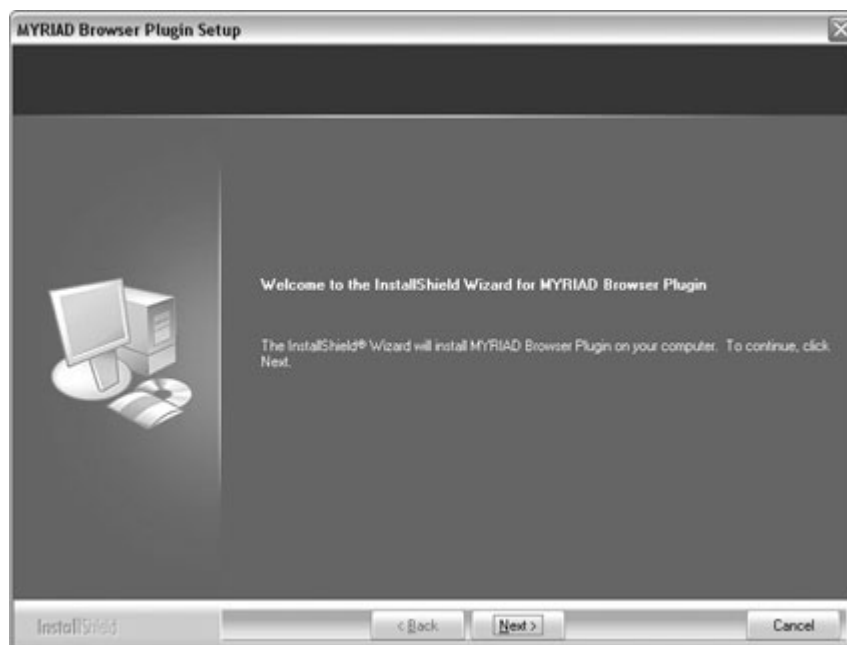


12. The InstallShield Wizard Complete screen appears. If any system files were updated, you are prompted to reboot your machine, otherwise you can choose to view the Readme or launch MYRIAD. Make the appropriate selections and click **Finish**.

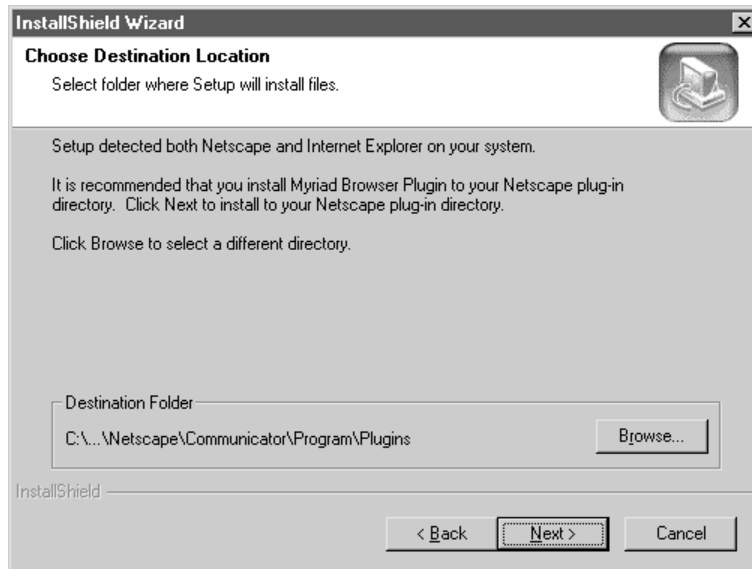


## 2.3 MYRIAD Browser Plug-in

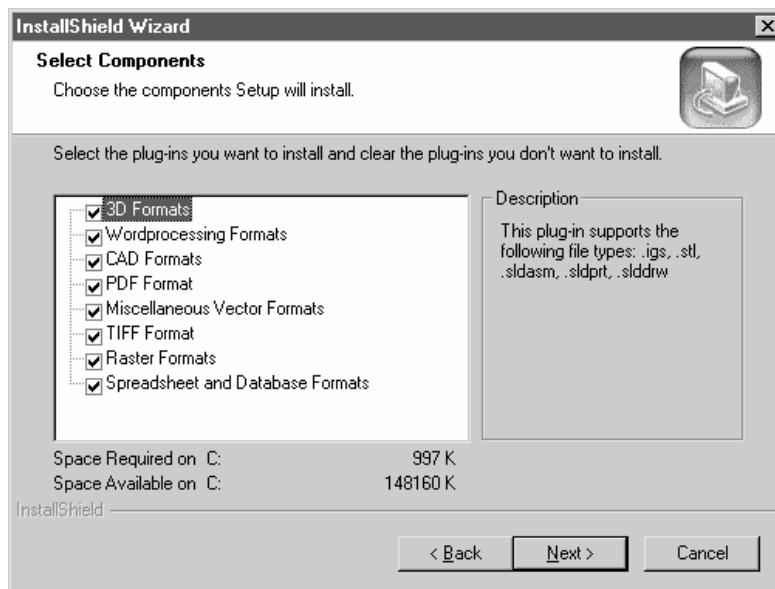
1. At any time after installing MYRIAD, you can install the Browser Plug-in (if you have selected this component to be installed with MYRIAD). Select the Browser Plug-in Installation icon from the MYRIAD program group. If this or a previous version of the plug-in is detected on your machine, you must uninstall it before continuing with the setup. Uninstalling MYRIAD will not uninstall the Browser Plug-in - they must be uninstalled separately.
2. The Welcome screen appears. Click **Next>**.



3. If the only Browser installed on your system is Internet Explorer, skip to Step 5, otherwise the Select Destination Location screen indicates what browser or browsers were found on your machine. If Netscape is found, Setup will default to that directory. Internet Explorer will be able to access the plug-in from the Netscape directory. If you are using a different browser, change the destination directory. Otherwise, click **Next >**.



4. The Select Components screen appears. The components list displays the format types you are licensed to view based on your MYRIAD serial number. These items are all selected by default, but you can clear the check box for any of the plug-in formats that you don't want to install. The Description section reveals the file types supported by each plug-in. Click **Next>**



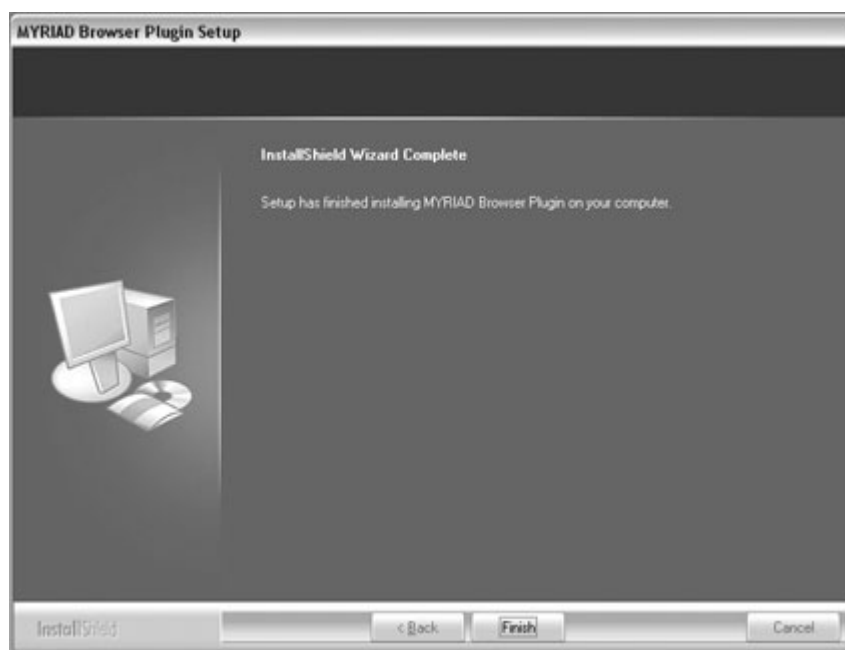
You may be prompted to rename Nppdf32.api to xxnppdf32.api. Nppdf32.api is Adobe's plug-in for PDF files, located in your browser plug-in directory. Renaming or deleting it will allow the Browser Plug-in to view PDF files. You must click on **Yes** to rename the default plug-in before

you can use the Browser Plug-in to view PDF files.

5. If the only Browser installed on your system is Internet Explorer, the plug-in install runs automatically. When the install is finished, the MyrATLX Register dialog box displays (below). Click **YES** for each extension that you want to associate with the MyrATLX Active-X control. Click **NO** for each extension that you do not want to associate with the MyrATLX Active-X control. Select the **Apply To All** check box if you want all extensions to be associated with the MyrATLX Active-X control.



6. The plug-in files load and the InstallShield Wizard Complete screen displays. Click on **Finish** to exit the Browser Plug-in Setup.



## 2.4 License Management

Prior to version 5.2, MYRIAD was available with two floating network license configurations. A floating network license allows the customer to install a specified number of licenses on the server for checkout

by any operator on the network. Seats become available to other users with this method as soon as a user exits MYRIAD.

The two methods for managing floating network licensing were file lock networking and the License Server. The File Locking method is no longer available, and the License Server method has changed.

The new Network Licensing method is similar to a named licensing scheme, but it locks licenses to a MAC ID (based on the network card) instead of a user name. It is a self-administering method in that there is no list of authorized users to maintain. The License Server now monitors how many users are accessing MYRIAD at one time by recording the client machine's MAC ID number. Once the total number of licenses allowed is recorded, it prevents any additional copies of MYRIAD from being launched. Therefore, if you are licensed for 25 users, the first 25 different MAC IDs to request licenses get them. Network Licensing automatically installs and runs the License Server as a service upon the install of a network copy of MYRIAD.

The License Server must be running at all times and can be used only for TCP/IP networks. The server machine must be assigned a static IP address or machine (host) name as this information is encoded in the license key. The License Server will only run on that particular server with the licensed IP address or host name. If DHCP is used, the server must be assigned the same address or host name for each request occurrence. A network server copy of MYRIAD should be run only on a Windows XP, 2000 or 2003 Server machine.

### 2.4.1 NetSetup

NetSetup provides a zero-admin method of creating shortcuts, program folders, plug-ins, and registry keys on client machines accessing a network copy of MYRIAD. End-users simply run the NetSetup.exe file in the NetSetup directory and everything is done for them. It even configures the client machine for the PDF plug-in for either a local or network copy of Acrobat.

When installing MYRIAD with a multi-user serial number, MYRIAD automatically creates the NetSetup directory within the MYRIAD install directory. If the end-users will be using a network copy of Acrobat, it must reside on the same machine as the network copy of MYRIAD.

**Note:** If a previous version of MYRIAD is detected on a client machine, NetSetup offers to uninstall it. If the current version of MYRIAD is detected, the user receives a message that they must uninstall the current version before running NetSetup and Setup exits.

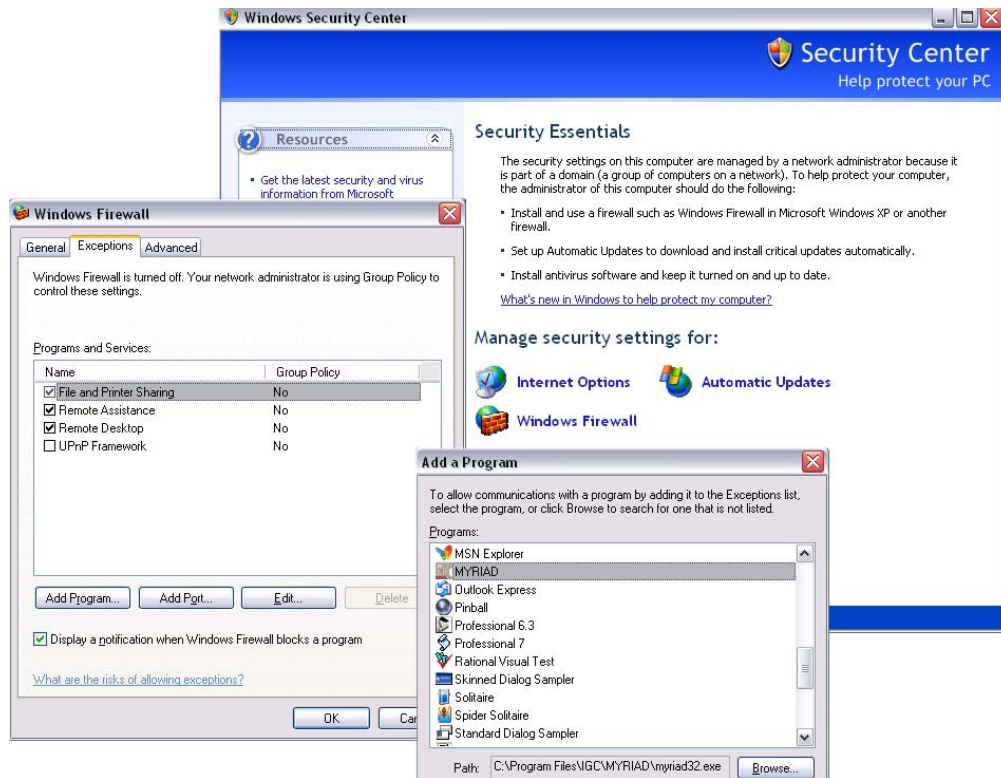
### Configuring NetSetup

#### **XPSP2 Users:**

If you are installing the MYRIAD server to a Windows XP system running Service Pack 2, there are additional steps described below that must be taken to allow MYRIAD to run through Window's Firewall. If these steps are not taken, MYRIAD will not be able to launch from the client machines. Perform these steps **in addition to** the steps contained in the next section "All Users".

1. On the server machine where you have installed a copy of MYRIAD, select **Security Center** from the **Control Panel**.
2. Select the **Windows Firewall** option from the *Security Center* window.
3. Click the **Exceptions** tab from the *Windows Firewall* dialog.
4. Click **Add Program** and click Browse from the *Add a Program* dialog to locate and select the file *Licserve.exe*. This file is located in the MYRIAD installation root directory.

- Click OK. MYRIAD now appears in the *Programs and Services* list on the *Exceptions* tab.



### All Users:

Once you have installed the server copy of MYRIAD, follow the steps below to configure the NetSetup utility properly.

- Share the MYRIAD directory on the server machine (not the NetSetup directory). The NetSetup directory **must** reside directly within the MYRIAD directory.
- In the NetSetup directory, open the *Netsetup.txt* file. It contains the following entries:

```
<Path to Myriad>
<Serial number>
<Machine name>
Adobe Local or <Path to Acrobat>*
```

\*This line only appears if you have selected to use Acrobat to view PDF files. If you chose Local Installations in the MYRIAD install, "Adobe Local" appears in this line. If you chose Network Installation, the path to Acrobat appears.

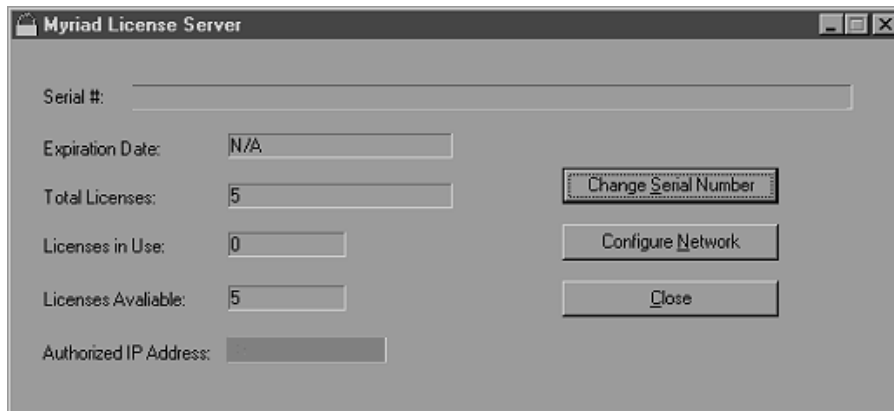
- If you have opted to use a network copy of Acrobat, share your Acrobat directory (the directory containing Acrobat.exe at its root level). Again, NetSetup is assuming that the share will be the server machine name followed directly by the Acrobat directory. If this path is incorrect, update the last line in the NetSetup.txt file. **Acrobat must reside on the same machine as the MYRIAD server install.**
- If you have opted to use Autodesk Design Tracking to view Inventor 2D and 3D file formats, you must install Design Tracking version 8.0 or 9.0 (available from the MYRIAD installation CD).**

5. We strongly recommend running a test install on a client machine. Access the Myriad/Netsetup directory on the network server from the client machine. Run *setup.exe*. Once installed, launch MYRIAD from the shortcut created under the Windows Start menu to verify the path is correct. If you are using Acrobat to view PDF files, load a PDF file to verify that the PDF plug-in was registered correctly and that the Acrobat path is correct. If you have any difficulties, see **6.0 Troubleshooting** or contact Technical Support (see **7.0 Contacting Informative Graphics**).

## 3.0 Configuring the License Server

The License Server is already configured using the default settings (refer below). You can change the settings manually if needed. When running as a service, the license server does not display the dialogue containing license key, number of licenses in use, etc. To view and edit this information, proceed with the following instructions. This shuts down the service, and runs the license server as an application. Shutting down the application restarts the service. Stopping the service does not reset the licenses in use.

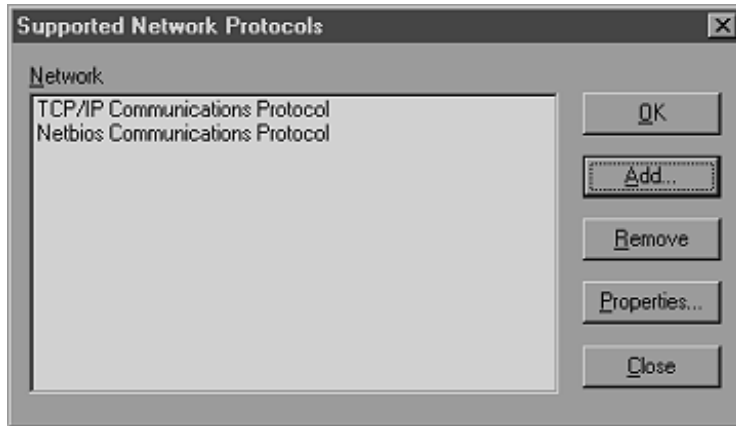
1. Choose a machine to use as the License Server and install MYRIAD.
2. To update the License Server, access the License Server shortcut through your Myriad Program group on your Start menu (or you can double-click on the *licserv.exe* file in the installed MYRIAD directory). The **MYRIAD License Server** dialog box displays.



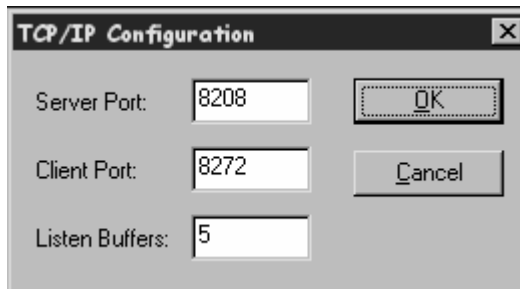
The following information appears in the MYRIAD License Server dialog box.

Serial #	Your serial number. This should be supplied automatically. If it does not appear, you must enter it now (you can find it on the sticker sent with the MYRIAD CD).
Total Licenses	The total number of copies of MYRIAD that you can run concurrently.
Licenses in Use	The number of copies of MYRIAD currently running.
Licenses Available	The number of available copies remaining to be run.
Change Serial Number	Allows you to change the serial number if, for example, you have increased the number of licensed copies and are issued a new number.
Configure Network	Allows you to add and remove TCP/IP protocol support and configure for a TCP/IP network, if necessary.

- To add a protocol, click on **Configure Network**, and then on **Add**. Select `myrsncm.dll` for a TCP/IP protocol and click **Open**.

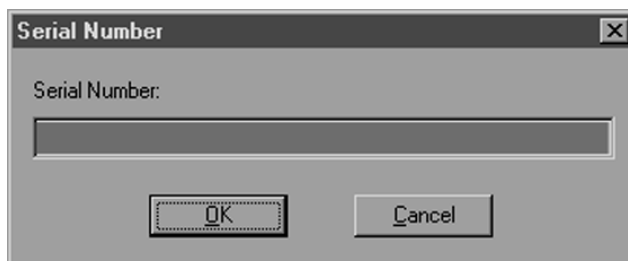


- To change the TCP/IP protocol, select **TCP/IP Communications Protocol** and click **Properties** to display the TCP/IP Configuration dialog box.



You should only modify the Broadcast Port or Server Port if you are using another application that requires those settings. The Broadcast Port is the TCP/IP port where the License Server listens for new MYRIAD connections. The Server Port is the port where the License Server processes requests for a MYRIAD connection. Listen Buffers represents the number of requests for connections that can be processed at one time before being turned over to the Server Port. The range for the Broadcast and Server ports is 1,024 to 9,999, but only needs to be changed if there is a conflict. The Listen Buffers should not be changed.

- Change the desired port or buffer setting and click **OK**
- If you need to change the serial number, clicking on **Change Serial Number** displays the **Serial Number** dialog box.



- Enter the new serial number in the **Serial Number** text box and click **OK**. You can change the serial number while licenses are in use. If the new number of total licensed users is less than the number of current users, the excess users are logged off using a first on first off method of elimination.



## 4.0 Customizing MYRIAD

### 4.1 General Command Line Arguments

You can disable virtually any toolbar button or menu option from the command line by using the format shown below. A FALSE value disables the item, while a TRUE value enables any item that has been disabled in the MYRuser.INI for that session. You can enter as many as you need, up to 256 characters, by inserting a space after each one. The example shows how you would remove the Exit option from the File menu.

Format:            myriad32 -c<key>=value

Example:        myriad32 -cAppExit=FALSE

Some of the popular commands are grouped below by toolbar, followed by a complete alphabetical listing. There are also predefined switches (see **4.2 Predefined Switches**) that disable an entire feature automatically, such as redlining or printing.

#### **File Toolbar**

FileOpen	Removes the Open button from the File toolbar and Open command from the File menu.
MyriadEditRedlineMenu	Removes the Redline Menu button from the File toolbar and Redline command from the File menu.
DocStack	Removes the Document Stack button from the File toolbar.
NextDoc	Removes the Next Doc button from the File toolbar and command from the File menu.
PrevDoc	Removes the Prev Doc button from the File toolbar.
Print	Removes the Quick Print button from the File toolbar and the Print command from the File menu.

#### **View Toolbar**

Select	Removes the Select button from the View toolbar and the command from the View menu.
ZoomExtents	Removes the Zoom All button from the View toolbar and the command from the View menu.
Zoom	Removes the Zoom button from the View toolbar and the command from the View menu.
ZoomWidth	Removes the Zoom Width button from the View toolbar and the command from the View menu.
BirdsEye	Removes the Bird's Eye button command under the View menu.
Eyeglass	Removes the Eye Glass button from the View toolbar and the command from the View menu.
Color	Removes the Monochrome/Color button from the View toolbar.
RasterToggle	Removes the Raster button from the View toolbar.
BackgroundColor	Removes the Background Color button from the View toolbar.
Layering	Removes the Set Visible Layers button from the View toolbar and the Visible Layers command from the View menu.
ToolbarOrient	Removes the Orientation button from the View toolbar.

#### **Redline Toolbar**

RedlineMenu	Removes the Redline Menu button from the Redline toolbar.
RedlineEntityLine	Removes the Line, Sketch, Arc, and Arrow Redline tools from the Redline toolbar.
RedlineEntityHighlight	Removes the Cloud and Highlight tools (Rectangle, Ellipse, and Polygon) from the Redline toolbar.
RedlineEntityText	Removes the Text, Text Crossout, Text Leader, and Text Caret tools from the Redline toolbar.
RedlinePDF	Removes the PDF tools from the Redline toolbar.
RedlineSymbol	Removes the Symbol button from the Redline toolbar.
RedlineChangemarks	Removes the Changemarks tools from the Redline toolbar.
RedlineLineStyle	Removes the Line Style button from the Redline toolbar.
RedlineLineWidth	Removes the Line Width button from the Redline toolbar.
RedlineColor	Removes the Color button from the Redline toolbar.

### **All Command Line Arguments (listed alphabetically)**

AppExit	Removes the Exit option under the File menu.
ArrangeIcons	Removes the Arrange Icons command under the Window menu.
Associate	Removes the Unrecognized Extension dialog box.
AuthorTool	Removes the Author Tool under the Tools menu.
BackgroundColor	Removes the Background Color button from the View toolbar.
BirdsEye	Removes the Bird's Eye button from the View toolbar and the Bird's Eye command under the View menu.
BirdsEyeClose	Removes the Close command in the Bird's Eye Right Mouse Button option menu.
BirdsEyeStickAround	Removes the Stick Around command in the Bird's Eye Right Mouse Button option menu.
Calibrate	Removes the Calibrate feature under the Analysis menu.
Capture	Removes the Capture to Clipboard feature under the Edit menu.
CascadeWindow	Removes the Cascade command under the Window menu.
Changemarks	Removes the Changemark Option from the Redline toolbar and the Changemarks command from the Tools menu.
CloseAll	Removes the Close All command under the Window menu.
Color	Removes the Monochrome/Color button from the View toolbar
Consolidate	Removes the Consolidate Redlines command under the Edit menu.
DocStack	Removes the Document Stack button from the File toolbar.
EyeGlass	Removes the Eye Glass button from the View toolbar and the Eye Glass command under the View menu.
EyeGlassClose	Removes the Close command from the Eye Glass Right Mouse Button option menu.
EyeGlassCloseSync	Removes the Close and Update Original command from the Eye Glass Right Mouse Button Option menu.
FileClose	Removes the Close command under the File menu.
FileOpen	Removes the Open command under the File menu.
FitWindow	Removes the Fit to Image command under the Window menu.
HelpAbout	Removes the About MYRIAD command under the Help menu.
HelpContents	Removes the Contents command under the Help menu.
HelpSupport	Removes the Product Support command under the Help menu.
Layering	Removes the Set Visible Layers button from the View toolbar and the Visible Layers command from the View menu. To disable layering capabilities completely, you must also disable SetRedlineLayer.

MainFileMenu	Removes the File menu when no files are open.
MainHelpMenu	Removes the Help menu when no files are open.
MainToolsMenu	Removes the Tools menu when no files are open.
Measure	Removes the 2D Measure feature under the Analysis menu.
MRU (Most Recently Used List)	Removes the most recently used file list.
MyriadEditMenu	Removes the Edit menu.
MyriadEditRedlineMenu	Removes the Redline submenu from the File menu.
MyriadFileMenu	Removes the File menu when there is an active document window(s).
MyriadHelpMenu	Removes the Help menu when there is an active document window(s).
MyriadToolsMenu	Removes the Tools menu when there is an active document window(s).
MyriadViewMenu	Removes the View menu.
MyriadWindowMenu	Removes the Window menu.
NextDoc	Removes the NextDoc button from the File toolbar.
NewWindow	Removes the New Window command under the Window menu.
Options	Removes the Option command under the Tools menu.
PrevDoc	Removes the PrevDoc button from the File toolbar.
Print	Removes the Quick Print button from the File toolbar and the Print command from the File menu.
PrintRegion	Removes the Print Region command from the File menu.
PrintPreview	Disables the Print Preview button from the Print dialog box.
PrintSetup	Disables the Print Setup command under the File menu.
RedlineChangemarks	Removes the Changemark tools from the Redline toolbar and removes the command from the Tools menu.
RedlineColor	Removes the color palette in the Redline toolbar.
RedlineEntityLine	Removes the Line, Sketch, and Arc Redline tools from the Redline toolbar.
RedlineEntityText	Removes the Redline Text tool from the Redline toolbar.
RedlineEntityHighlight	Removes the Cloud and Highlight tools (Rectangle, Ellipse, and Polygon) from the Redline toolbar.
RedlineLineStyle	Removes the Line Style button from the Redline toolbar.
RedlineLineWidth	Removes the Line Width button from the Redline toolbar.
RedlineMenu	Removes the Redline menu button from the Redline toolbar.
RedlineNew	Removes the New command under the Redline menu.
RedlinePDF	Removes the PDF tools from the Redline toolbar.
RedlineOpen	Removes the Open command under the Redline menu.
RedlineOpenForReview	Removes the Open for Review command under the Redline menu.
RedlineSave	Removes the Save command under the Redline menu.
RedlineSaveAs	Removes the Save As command under the Redline menu.
RedlineSymbol	Removes the Redline Symbol tool.
Redraw	Removes the Redraw command from Right Mouse Button Option menu.
Select	Removes the Select button from the View toolbar and the Select command from the Edit menu.
SendMail	Removes the Send Mail feature under the File menu.
SideBySide	Removes the Side-by-Side Compare command under the Tools menu.
TileHorizontal	Removes the Tile Horizontal command under the Window menu.
TileVertical	Removes the Tile Vertical command under the Window menu.
ToolbarOrient	Removes the Orientation button from the View toolbar.
Undo	Removes the Undo command under the Edit menu.
ViewStatusBar	Removes the Status Bar command under the Tools/Toolbars menu.

Zoom	Removes the Zoom Rectangle button from the View toolbar and the Zoom Rectangle command from the View menu.
ZoomExtents	Removes the Fit All button from the View toolbar and the Fit All command from the View menu.
ZoomIn	Removes the Zoom In command from the Right Mouse Button Option menu and disables the (+) key command. To disable the zoom features completely, you must disable all zoom commands.
ZoomOut	Removes the Zoom Out command from the Right Mouse Button Option menu and disables the (-) key command. To disable the zoom features completely, you must disable all zoom commands.
ZoomPrevious	Removes the Zoom Previous command from the Right Mouse Button Option menu. To disable the zoom features completely, you must disable all zoom commands.
ZoomWidth	Removes the Fit Width button from the View toolbar and the command from the View menu.

## 4.2 Predefined Switches

You can disable or remove a number of buttons and menu commands through the general command line arguments. In addition, you can use the predefined command line switches listed below. You can also add predefined switches by editing the target of your Myriad shortcut properties menu. For example, ...<path>\Myriad32.exe -a -np launches MYRIAD in administrators mode with printing disabled.

### **Disable Redline** **-v or /v**

This command disables all redlining capabilities so MYRIAD can only be used for viewing.

Example: myriad32 -v

### **Disable Folder** **-d or /d**

This disables the Document Stack, or folder capability.

Example: myriad32 /d

### **Disable Printing** **-np or /np**

This option disables all printing capabilities.

Example: myriad32 -np

### **Disable Mail** **-nm or /nm**

This option disables Myriad's mail interface.

Example: myriad32 /nm

### **Disable Calibrate and 2D Measure** **-ni or /ni**

This command disables all 2D Calibrate and Measure capabilities.

Example: myriad32 -ni

### **Disable View Set** **-x or /x**

This command disables the View Set Toolbar and menu.

Example: myriad32 -x

**Launch with Document Stack -f or /f**

This command automatically loads the specified Document Stack when MYRIAD is launched.

Example:        myriad32 -f c:\project\stack.dsf

**Launch with Changemark List -m or /m**

This command automatically summons the Changemark List when MYRIAD is launched.

Example:        myriad32 -m

**Load in Side-by-Side Compare -s or /s**

This command automatically loads the two specified files in Side-by-Side Compare.

Example:        myriad32 /s (filename1, filename2)

**Launch in Administrator mode -a or /a**

This command launches MYRIAD in System Administrator Mode. If you have a network copy of MYRIAD and do NOT setup a System Administrator, any user will be able to edit the ISO print banners and watermark. Once a System Administrator is defined (you set them by selecting **System Administrators...** from the **Tools** menu in MYRIAD), you can only edit the ISO print banners by launching MYRIAD in Administrator Mode and supplying a valid username and password.

Example:        myriad32 -a

There are three additional items, shown below, that can be customized or disabled using the following format at the command line. No spaces are allowed in the <section>.

Format:        -c<section>:<key>=FALSE

Example:        -cChangemark\_Tool:Print=FALSE

<b><u>Item</u></b>	<b><u>Section</u></b>	<b><u>Key</u></b>
Print button on the Changemark List Dialog Box	Changemark_Tool	Print
Color palette on the Redline toolbar	Custom	RedlineColor
Orientation button on the View toolbar	Custom	ToolbarOrient

## 4.3 MYRuser.INI and MYRIAD32.ini Files

You can modify paths, colors, and other MYRIAD features for an individual user in the MYRuser.INI file (MYR followed by the user's login name and MYRIAD version) or for all users in the MYRIAD32.ini file (when using a network install of MYRIAD). Each user has a different MYRuser.INI file, so each user can have different settings. The MYRuser.INI takes precedence over the MYRIAD32.ini, except for settings that only appear in the system configuration file. You can also customize MYRIAD by disabling features for each user through the MYRuser.INI file (as opposed to using command line arguments).

The sections have the following format, unless otherwise noted:

Format:        Parameter=VALUE

Example:      **Bold=FALSE**

The MYRIAD32.INI file is located in the installed MYRIAD directory. The MYRuser.INI file location is as follows:

Documents and Settings\<username>\Application Data\IGC

**Note:** The actual file name MYRuser.ini does not exist. This file is named according to the following convention: the string "MYR" appended with the user's login name, appended with the Myriad version number. For example, if your Windows login for that session is JDoe, Myriad will create a settings file in your Windows (or equivalent) directory called myrjdoe700.ini, and myrjdoe700.tbr with 700 being the current version number.

The sections and settings of the MYRuser.INI and/or MYRIAD32.ini file are documented below. Any sections or settings that are not documented should not be modified. **Note:** In both the MYRuser.INI and the MYRIAD32.ini, there must be a blank line at the end of the file.

### **[Options]**

This section describes both the general display and advanced options, most of which are available through the Options dialog box.

AutoHybrid	Automatically senses Hybrid image types and loads all associated files. This corresponds to the Auto Open Hybrid setting in the Options dialog box.  <b>Note:</b> This setting should be changed in the <b>Open</b> tab of the Options dialog box, not the MYRuser.INI.  FALSE      =      Do not sense Hybrids TRUE       =      (Default) Sense Hybrids
AutoMarkup	Specifies to load redlines files associated with an image file automatically. This corresponds to the Auto Open Redline setting in the Options dialog box.  <b>Note:</b> This setting should be changed in the <b>Open</b> tab of the Options dialog box, not the MYRuser.INI.  FALSE      =      Do not load redlines TRUE       =      (Default) Load redlines
AutoZoomWidthEnable	Indicates if the image should be considered as a candidate for loading in Fit Width mode.  <b>Note:</b> This setting should be changed in the <b>View</b> tab of the Options dialog box, not the MYRuser.INI.  FALSE      =      (Default) Not a candidate TRUE       =      Candidate
AutoZoomWidthMax	This key determines the maximum image size for files to be loaded at Auto Fit Width. The integer value specifies the maximum width in inches or centimeters (selected in the <b>View</b> tab of the Options dialog box), of images that are opened in Fit Width mode. For example, the following value specifies that any image whose actual width is 10 inches (the default) or below, inclusive, is opened in Fit Width mode (based on the AutoZoomWidthEnable key below).

	<p><b>Note:</b> This setting should be changed in the <b>View</b> tab of the Options dialog box, not the MYRuser.INI.</p>
	AutoZoomWidthMax = 10
AutoZoomWidthUnit	Specifies whether the Auto Zoom Width is specified in inches or centimeters.
	<p><b>Note:</b> These settings should be changed in the <b>View</b> tab of the Options dialog box, not the MYRuser.INI.</p>
	0 = (Default) Inches
	1 = Centimeter
Background Color	Indicates the index into the background palette (see [BackgroundPalette]).
	<p><b>Note:</b> This setting should not be changed by the user. You can adjust it in the <b>Display</b> tab of the Options dialog box.</p>
CacheImages	Specifies to keep standard images (non-multipage) in memory, which speeds up subsequent access to those images.
	<p><b>Note:</b> This setting should be changed in the <b>Open</b> tab of the Options dialog box, not the MYRuser.INI.</p>
	FALSE = Do not keep in memory
	TRUE = (Default) Keep in memory
DisplayWhileLoading	Indicates whether to display images while loading.
	FALSE = Do not display images
	TRUE = (Default) Display images
Draw Mode	Specifies the integer representing the desired raster draw mode.
	<p><b>Note:</b> This setting should be adjusted in the <b>Display</b> tab of the Options dialog box.</p>
	0 = Sample Draw (Fast, Default)
	1 = Full Draw (Slower)
	2 = Scale to Gray (Slowest)
DynamicUpdate	Indicates whether MYRIAD pans and zooms the image while performing rubberbanding that drag off the edge of the visible image window.
	<p><b>Note:</b> This setting should be changed in the <b>View</b> tab of the Options dialog box, not the MYRuser.INI.</p>
	FALSE = (Default) Do not pan
	TRUE = Pan
ForegroundColor	Indicates the index into the foreground palette (see [ForegroundPalette]).
	<p><b>Note:</b> This setting shouldn't be changed by the user. You can adjust it in the <b>Display</b> tab of the Options dialog box.</p>
Invert	Indicates whether to load monochrome raster files in Invert mode.
	<p><b>Note:</b> This setting should be adjusted in the <b>Display</b> tab of the Options dialog box.</p>
	FALSE = (Default) Do not load images inverted
	TRUE = Load images inverted

Launch	<p>Specifies whether the Launch feature is enabled or disabled.</p> <p>FALSE = The Launch feature is disabled, and the Launch button is not present in the Document Stack Manager</p> <p>TRUE = (Default) The launch feature is enabled and the Launch button is present in the Document Stack Manager</p>
MonoMode	<p>Indicates whether to load color vector images in Monochrome mode.</p> <p><b>Note:</b> This setting should be adjusted in the <b>Display</b> tab of the Options dialog box.</p> <p>FALSE = (Default) Do not load in monochrome</p> <p>TRUE = Load in Monochrome</p>
MRUList	<p>Indicates whether to keep a list of the 10 most recently used files under the <b>File</b> menu.</p> <p><b>Note:</b> This setting should be changed in the <b>Open</b> tab of the Options dialog box, not the MYRuser.INI.</p> <p>FALSE = No MRU list</p> <p>TRUE = (Default) MRU list</p>
MultipageCache	<p>Corresponds to the Keep Loaded Pages option in the <b>Open</b> tab of the Options dialog box. Specifies to keep each page visited in a multi-page file in memory, which speeds up subsequent access to those pages.</p> <p><b>Note:</b> This setting should be changed in the <b>Open</b> tab of the Options dialog box, not the MYRuser.INI.</p> <p>FALSE = (Default) Do not keep in memory</p> <p>TRUE = Keep in memory</p>
Orientation	<p>Specifies the integer representing the desired orientation of the image.</p> <p><b>Note:</b> This setting should be adjusted in the <b>Display</b> tab of the Options dialog box.</p> <p>0 = (Default) 0 Degrees</p> <p>1 = 90 Degrees</p> <p>2 = 180 Degrees</p> <p>3 = 270 Degrees</p>
OutlineRedlineHides	<p>Specifies to draw an outline around the Redline hide entities, making them more visible.</p> <p>FALSE = (Default) Do not draw outline</p> <p>TRUE = Draw outline</p>
Precision	<p>Determines the number of decimal places used in calibration. Four is the default value. Values greater than nine are not recommended.</p> <p><b>Note:</b> This setting should be changed in the <b>3D Display</b> tab of the Options dialog box (Measurement/Dimension Precision field), not the MYRuser.INI</p>
ReserveColors	<p>Determines whether or not the redline palette colors are added to the image colors. This only affects images with more than 256 colors.</p> <p><b>Note:</b> This setting should be changed in the <b>Open</b> tab of the Options dialog box, not the MYRuser.INI.</p>



FALSE	=	(Default) The redline palette is not added to the image colors, allowing a more accurate image palette
TRUE	=	The redline palette is added to the image colors

### **[Changemark Export]**

This section, located in the MYRIAD32.ini file, indicates the path of the base HTML files for the Changemark HTML Publish feature.

BaseHTMLFile1	Specifies the path for the frame HTML file.
BaseHTMLFile2	Specifies the path for the graphic HTML file.
BaseHTMLFile3	Specifies the path for the control HTML file.
BaseHTMLFile4	Specifies the path for the text HTML file.
SupportFile1	Specifies the path for the Next button, next.gif.
SupportFile2	Specifies the path for the Previous button, Prev.gif.
SupportFile3	Specifies the path for the Index button, index.gif.
SupportFile4	Specifies the path for the banner image, myrjavapict.jpg
SupportFile5	Specifies the path for the IGC button, myrjavarigc.jpg
SupportFile6	Specifies the path for the Changemark frame's background image, bg3.gif
IndexFile	Specifies the path for the index HTML file, the index of all Changemarks exported.

### **[3D HTML Export]**

This section, located in the MYRIAD32.INI file, indicates the path of the base HTML files for the 3D HTML export feature.

BaseHTMLFile1	Specifies the path for the 3D frame HTML file, 3DFrame.htm.
BaseHTMLFile2	Specifies the path for the 3D graphic HTML file, 3DGraphic.htm.
BaseHTMLFile3	Specifies the path for the 3D control HTML file, 3DControl.htm.
BaseHTMLFile4	Specifies the path for the 3D text HTML file, 3DText.htm.
SupportFile1	Specifies the path for the Next button, Next.gif.
SupportFile2	Specifies the path for the Previous button, Prev.gif.
SupportFile3	Specifies the path for the Index button, Index.gif.
SupportFile4	Specifies the path for the banner image, myrjavapict.jpg.
SupportFile5	Specifies the path for the IGC button, myrjavarigc.jpg.
SupportFile6	Specifies the path for the background image, bg3.gif.
IndexFile	Specifies the path for the index 3D HTML file, the index of all view sets exported.

### **[3D HTML Assembly Export]**

This section, located in the MYRIAD32.INI file, indicates the path of the base HTML files for the 3D HTML Assembly export feature. In order for the 3D HTML Assembly feature to work, this section must not be modified.

BaseHTMLFile1=3DTreeControl.htm

BaseHTMLName1=control

SupportFile1=treeApp.jar

SupportFile2=file.gif

SupportFile3=group.gif

SupportFile4=part.gif

SupportFile5=pview.gif.

SupportFile6=uvview.jpg.

SupportFile7=logo.jpg

SupportFile8=myrjavabanb.jpg

SupportFile9=myrjavapict.jpg

SupportFile10=myrjavarigc.jpg

SupportFile11=bg3.gif

IndexFile=index.htm

### **[Changemark Tool]**

The Changemark\_tool section sets the parameters for the Changemark tool.

State	Specifies if the Changemark tool should display on startup.
FALSE	= (Default) Do not display
TRUE	= Display Changemark tool
Large	Specifies whether the Changemark tool should display in expanded form.
FALSE	= Display in collapsed form
TRUE	= (Default) Display in expanded form

### **[SidebySide]**

This section sets the parameters for the Side-by-Side Compare tool.

SxsShadow	Specifies the RGB value (in RGB triplet form) for the Alternate Document "shadow" in a Side-by-Side view. The default value is 128, 128, 128. Note: This value is highly dependent on the background color of the view.
SxsBirdsBackground	Specifies the RGB value (in RGB triplet form) for the background of the Side-by-Side Bird's Eye view. The default value is 0, 0, 0.
SxsBirdsOnlyMain	Indicates the RGB value (in RGB triplet form) for the data only present in the main image in the Side-by-Side Bird's Eye view. The default value is 0, 0, 255.

SxsBirdsOnlyOther	Indicates the RGB value (in RGB triplet form) for the data only present in the other (alternate) image in the Side-by-Side Bird's Eye view. The default value is 0, 255, 0.
SxsBirdsInBoth	Specifies the RGB value (in RGB triplet form) for the data only present in both the main and other image in the Side-by-Side Bird's Eye view. The default value is 255, 0, 0.

### **[RedlinePalette]**

This section contains the RGB values (in RGB triplets) for all 18 Redline colors, from 000 to 017. The standard Redline palette is shown below, though the user can change these colors to any valid RGB triplet within the limitations of the display hardware and operating system.

**Note:** This section appears in the MYRIAD32.ini file. The number and format of these keys should not be modified.

```
Color000=0,0,0
Color001=0,0,128
Color002=0,128,0
Color003=0,128,128
Color004=128,0,0
Color005=128,0,128
Color006=128,128,0
Color007=192,192,192
Color008=128,128,128
Color009=0,0,255
Color010=0,255,0
Color011=0,255,255
Color012=255,0,0
Color013=255,0,255
Color014=255,255,0
Color015=255,255,255
```

### **[BackgroundPalette]**

This section contains the RGB values (in RGB triplets) for the three background colors, from 000 to 002. The standard background palette is shown below, though the user can change these colors to any valid RGB triplet within the limitations of the display hardware and operating system.

**Note:** This section appears in the MYRIAD32.ini file. The number and format of these keys should not be modified.

```
Color000 = 0,0,0
Color001 = 192,192,192
Color002 = 255,255,255
```

### **[Background Menu]**

This section controls the background palette used and corresponds with the Background Color menu in MYRIAD.

```
Color000 = Black:0
Color001 = Gray:1
Color002 = White:2
```

### **[ForegroundPalette]**

This section contains the RGB values (in RGB triplets) for the 16 foreground colors, from 000 to 015. The standard foreground palette is shown below, though the user can change these colors to any valid RGB triplet within the limitations of the display hardware and operating system.

**Note:** This section appears in the MYRIAD32.ini file. The number and format of these keys should not be modified.

Color000	=	0,0,0
Color001	=	0,0,128
Color002	=	0,128,0
Color003	=	0,128,128
Color004	=	128,0,0
Color005	=	128,0,128
Color006	=	128,128,0
Color007	=	192,192,192
Color008	=	128,128,128
Color009	=	0,0,255
Color010	=	0,255,0
Color011	=	0,255,255
Color012	=	255,0,0
Color013	=	255,0,255
Color014	=	255,255,0
Color015	=	255,255,255

### **[Auto-Recognize File Format Options]**

This section dictates whether MYRIAD automatically recognizes file formats, regardless of extension, or not.

Prompt On Success	Gives a message box telling the user what type of file was detected and verifying if the user wants to load it. If multiple files were selected, even if they are the same type, the message box appears for each one.
Enable AutoRecognize	When set to TRUE, MYRIAD automatically detects the type of file being loaded, regardless of extension. When set to FALSE, the Unrecognized Extension dialog box displays, prompting the user to select the file type.

### **[PrintHeaders]**

The PrintHeaders section controls the ISO 9000 print banners. This corresponds to the Banners/Watermarks dialog box in MYRIAD.

OverlayISOBanners	When set to TRUE, indicates for MYRIAD to allow the print banners to overlay the image. When FALSE, MYRIAD places the banners outside of image margins, but this may result in the image being resized to fit on the page.
Font	A comma delimited description of the font. This should only be set through the Banners/Watermarks dialog box.

TopLeft1, TopRight1, BottomCenter1, etc.

The actual text or wildcard to place in the field (e.g., TopLeft1= Date : %Date, TopRight1= Time : %Time, BottomCenter1= Title: %Title). These three appear by default. There are three available fields along each edge (TopLeft, TopCenter, TopRight, BottomLeft, BottomCenter, BottomRight, etc.). Each field can be ten lines deep. Specify which line to print after the field location (TopLeft1). You can also modify these through the Banners/Watermark dialog box.

### **[Print]**

This section controls the settings and options for the print device on the **Printer** tab. These can be specified in the MYRIAD32.ini, but any changes made through MYRIAD's interface are recorded in the Myruser.ini file. If no second print device is configured (there is no **Printer 2** tab), this represents the only print device. If Dual Mode Printing is enabled, the settings for the second print device (on the **Printer 2** tab of the Print dialog box) are stored under the [Plot Section] section of the MyrUser.ini file.

Allow Dual Output	When set to TRUE, this enables dual print mode and adds the second print device tab in the Print and Print Setup dialog boxes. The default is FALSE. This option should be set through the <b>Dual Printer</b> tab of the Options dialog box.
Auto Rotate	When set to TRUE (default), MYRIAD automatically prints any image whose width is greater than length in Landscape mode. If the length is greater, it prints in Portrait mode. When set to FALSE, images print in whichever mode is specified under the Printer Properties. This corresponds to the Auto Rotate option in the print Options dialog box.
ColorsToBlack	When set to TRUE, this prints all colors to black, which can reduce the size of the print file spooled. This is generally only useful for raster documents. This corresponds to the Black and White check box in the print Options dialog box.
Metric	When set to TRUE, the Printer2 at Greater Widths Than width is in Centimeters. The default is FALSE, indicating the width is in inches. This corresponds to the cm radio button in the <b>Dual Printers</b> tab of the Options dialog box.
MinLine	You can set the minimum line width for printouts, with 1 as the thinnest line width available. Set this equal to the desired number. This corresponds to the Minimum Line Thickness text box in the Print Options dialog box.
Outline Fills	When set to TRUE, this prints all filled entities from the source file with an outline, but without color. The default is FALSE. This corresponds to the Outline Fills check box in the print Options dialog box.
Plot at Width	When Dual Mode Printing is enabled, all files with a width greater than the size specified here are sent to the second print device when printing from the Document Stack with the Auto Select option. This should be changed in the Printer2 At Widths Greater Than text box in the <b>Dual Printers</b> tab of the Options dialog box.

**Note:** The three additional settings (Paper Size, Active Printer, and Printer Name) should not be modified by the user.

### **[Plot Section]**

This section controls the settings and options for the print device on the **Printer 2** tab. These can be specified in the MYRIAD32.ini, but any changes made through MYRIAD's interface are recorded in the Myruser.ini file. If no second print device is configured (there is no **Printer 2** tab), this section may not exist. All print settings are then contained in the main [Print] section.

**Auto Rotate** When set to TRUE (default), MYRIAD automatically prints any image whose width is greater than length in Landscape mode. If the length is greater, it prints in Portrait mode. When set to FALSE, images print in whichever mode is specified under the Printer Properties. This corresponds to the Auto Rotate option in the print Options dialog box.

**ColorsToBlack** When set to TRUE, this prints all colors to black, which can reduce the size of the print file spooled. This is generally only useful for raster documents. This corresponds to the Black and White check box in the print Options dialog box.

**MinLine** You can set the minimum line width for printouts, with 1 as the thinnest line width available. Set this equal to the desired number. This corresponds to the Minimum Line Thickness text box in the print Options dialog box.

**Outline Fills** When set to TRUE, this prints all filled entities from the source file with an outline, but without color. The default is FALSE. This corresponds to the Outline Fills check box in the Print **Options** dialog box.

**Note:** The additional settings (Paper Size and Printer Name) should not be modified by the user.

### **[Automatic Paper Size]**

This enables MYRIAD to detect the paper size of the file to be printed and send it to the appropriate tray of the active printer. This is an advanced feature of MYRIAD that can only be enabled through the MYRIAD32.ini and MyrUser.ini files. This section must be manually added to and configured by an administrator.

Three printers can be configured under this section. MYRIAD checks the Active Printer setting under the [Print] section of the INI file to determine which of the three printers is currently active (set through the Print or Print Setup dialog boxes). It then determines if the page size of the current file matches any of the listed sizes for that printer. You configure the printers and page sizes using the settings below (an example follows).

**AutoSize** This setting must be TRUE to enable the detection of page size.

**Printer(*n*)** Specifies the printer path, name, and supported paper sizes. You can configure paper sizes for up to three printers. Replace (*n*) with the appropriate number between 1 and 3, starting with Printer1. This setting must point to a valid printer accessible by the current machine and the printer name should appear exactly as it does in the Active Printer Name text box in MYRIAD's Print dialog box. Place a comma after the printer name, then add the numbers corresponding to the supported page sizes for that printer, separated by commas. **Be sure only to use paper sizes that are valid for that printer.** Use the following matrix to determine the numbers to use for page sizes:

2	Letter 8.5x11
3	Tabloid 11x17
4	Ledger 17x11
5	Legal 8.5x14.0
6	Statement 5.5x8.5

7	Executive 7.5x10.5
8	A3 297x420mm / 75.5x106.5
9	A4 210x297mm / 53.5x75.5
11	A5 148x210mm / 37.5x53.5
12	B4250x354mm / 63.5x90
13	B5 182x257mm / 46.2x65.2
14	Folio 8.5x13
15	Quarto 215x275mm / 54.5x69.8
16	10x14
17	11x17
24	C 17x22
25	D 22x34
26	E 34x44
39	US standard fan 14.8x11
40	German standard fan 8.5x12
41	German legal fan 8.5x13

**Example:**

```
[Automatic Paper Size]
AutoSize=TRUE
Printer1=\\<Print Server Machine>\HP LaserJet 4MV,2,3
Printer2=\\<Print Server Machine>\QMS 1660 Print System,7,14
Printer3=\\<Print Server Machine>\HP DesignJet 750C (E/A0) Color,9,11,12,24,25,26
```

**[Redline Present Strings]**

Overrides the default strings that are displayed for the %MrkPresent ISO banner token. If a markup is present on the image being printed, then the default **Present** string value displays “Redlines are present”. If no redlines are present, then the default **Absent** string value displays “No Redlines”. You can customize the output of these strings with this key.

```
Present=<string>
Absent=<string>
```

**[Symbol Driver Options]**

Points MYRIAD to the two DWG libraries for symbol support. This should have been filled in automatically at install and should not need to be modified.

Loader1                      The full path to the driver libraries Adinit.dat and Marcomp.dll must be specified here, separated by a comma, as shown below.

```
Loader1=<Myriad path>\marcomp.dll, <Myriad path>\adinit.dat
```

**[Symbol Libraries]**

This section controls what symbol libraries are available through the Symbols dialog box. You can have as many symbol files as you require and can control how they are grouped within the dialog box. Symbol files must be DWG files with defined blocks. Each block is one symbol.

Library<n>                      Specifies the group name and dwg file containing the symbol set. Replace <n> with the appropriate number (starting with 1). The symbols are grouped by group name in the dialog box. More than one library can have the same

group name so that all the symbols contained in those libraries appear together in the dialog box. An example is shown below.

Library1=Mechanical Symbols,D:\Progra~1\IGC\MYRIAD32\myrmech.dwg

### **[Launchers]**

Use the [Launchers] section to change which application MYRIAD launches for a particular extension. This section does not appear by default in either the Myruser.ini or Myriad32.ini, so you may need to add it. Simply specify the extension, followed by the equals sign (=) and the path to the executable of the application you wish to launch, as shown below. If you specify the same application and path as the default, the Launch feature does not work.

doc=d:\MSOffice\Winword\WINWORD.EXE,WinWord,System,[FileOpen("%1")]

xls=d:\MSOffice\Excel\EXCEL.EXE,Excel,system,[open("%1")]

The three fields following the path contain optional DDE information. The first field contains the application name, the second the topic name, and the third the DDE message. Specifying the DDE information allows MYRIAD to specify for the application to open another file instead of launching another application window.

### **[Startup]**

This section sets the parameters for MYRIAD's startup environment.

ImagePath	Specifies the path where the File/Open... and File/ Document Stack.../Add... commands search for image files.
RedlinePath	Indicates the last path where the File/Redline/Open..., /Save..., and /Save As... and File/Document Stack/ Redline commands loaded and saved redline files.
PermanentRedlinePath	Specifies the default path where the File/Redline/Open..., /Save..., and /Save As... and File/Document Stack/ Redline commands load and save redline files. <b>Note:</b> This setting can be edited in the <b>Paths</b> tab of the <b>Options</b> dialog box.
DocStackPath	Specifies the path where the File/Document Stack/ Open... and /Save... commands load and save DSF (Document Stack) files.
SerialNumber	Indicates the path to the MYRIAD license file IGCKey.lic. <b>Note:</b> This value only appears in the MYRIAD32.ini file.
LicenseServer	The IP address of the license server machine on the network. This address must match the IP address encoded in the serial number for the License Server to run. <b>Note:</b> This value only appears in the MYRIAD32.ini file.
Network	The network protocols and their parameters, comma delimited in order of network. <b>Note:</b> This value only appears in the MYRIAD32.ini file.

### **[PDF Support]**

This section controls the method used for PDF support. Upon installation, MYRIAD checks to see if a version of Adobe Acrobat is available. If found, MYRIAD will prompt the user as to whether or not to



use Acrobat for PDF support. If Acrobat is selected, the UseAcrobat setting is automatically set to TRUE. If Acrobat is not selected, the UseAcrobat setting is set to FALSE and MYRIAD uses the Liberty driver to view PDF files.

**UseAcrobat** When set to TRUE, MYRIAD uses Adobe Acrobat to view PDF files. When set to FALSE, NULL, or if no version of Acrobat is available on the user's machine, MYRIAD uses the Liberty driver to view PDF files.

**Note:** This value is required to be set to TRUE for MYRIAD to use Acrobat.

## 4.4 Disabling Features through INI Files

You can customize MYRIAD for each user or for all users by creating a Custom section in the individual MYRuser.INI file or MYRIAD32.ini file, respectively. Unlike command line arguments, values entered in the MYRuser.INI file remain in effect until you remove them; however, command line arguments override any MYRuser.INI values for that session. The Custom section can be inserted after any other section and can contain as many commands as you require.

You can disable any item by using one or more of the general customization command line arguments and assigning it a value of FALSE.

Format: [Custom]  
<key>=FALSE

Example: [ Custom ]  
appexit=FALSE

Because there are no short-cut commands in the MYRuser.INI file, you must disable all related keys to remove certain items completely. The list below shows the equivalent MYRuser.INI file commands for the items with short-cut command line arguments.

### **Disable Redline**

MyriadEditRedlineMenu=FALSE  
MyriadRedlineMenu=FALSE

### **Disable Mail**

SendMail=FALSE

### **Disable Printing**

Print=FALSE  
PrintSetup=FALSE  
PrintRegion=FALSE  
QuickPrint=FALSE

### **Disable Calibrate and 2D Measure**

Calibrate=FALSE  
Measure=FALSE

You can also disable or customize the following three items using the format shown below. These items can also be disabled from the command line.

Look for the existing section listed below, such as Changemark\_tool, in the MYRuser.INI file and enter the key and value anywhere in that section. If you do not see the section that you are looking for in the MYRuser.INI, you will need to create it.

Format: -c<section>:<key>=FALSE

Example:     -cChangemark\_Tool:Print=FALSE

<b>Item</b>	<b>Section</b>	<b>Key</b>
Print button on the Changemark List Dialog Box	Changemark_Tool	Print
Color palette on the Redline toolbar	Custom	RedlineColor
Orientation button on the View toolbar	Custom	ToolbarOrient

### Disabling the Splash Screen

You can disable the MYRIAD splash screen. In the [Options] section of either the MYRuser.INI or MYRIAD32.INI file, add:

Splash Delay=FALSE

Adding this setting to the MYRuser.INI file disables the splash screen for that user, while adding it to the MYRIAD32.INI disables it for all users. Remember that settings in the MYRuser.INI take precedence over the settings in the MYRIAD32.INI.

## 4.5 Myrdrv.ini

MYRIAD recognizes supported file formats, their file extensions, and any related parameters through the Myrdrv.ini configuration.

For complete details concerning the Myrdrv.ini file and its usage, please refer to the *Myrdrv\_Userguide.rtf* document included in your MYRIAD installation directory.

## 5.0 Document Stack File Format

Just as with the previous version of MYRIAD for Windows, a group file (.dsf), now called a document stack, is used to direct MYRIAD to the files specified in the document stack, to describe the files, and to setup markup files for documents in the stack. You can edit the document stack file by opening it in an ASCII text editor, such as Windows' Notepad application. The formal syntax for document stack files is shown below.

Stack	<i>Header Document...</i>
Header	<b>Informative Graphics Document Stack Version 3.0 Rev 1</b>
Document	<b>DOCUMENT</b> "document-name" [ <i>document options</i> ] <i>Page...</i> <b>ENDDOC</b>
Page	<b>PAGE</b> [ <i>page options</i> ] <i>Image...</i>

*Markup*  
**ENDPAGE**  
*Image*                "file-path" [*image options*]  
*Markup*                **MARKUP** [*file path*]

## **Options**

The document, page, and image options available are listed below. More detailed descriptions follow under Option Descriptions.

*document options:*        -**B***red green blue*  
                                  -**F***red green blue*  
                                  -**D**{0|1|3}  
                                  -**I**{0|1}  
                                  -**O***angle*  
                                  -**P**{0|1}

*page options:*                -**L***minx miny maxx maxy*  
                                  -**C***minx miny maxx maxy*

*image options:*            -**F***red green blue*  
                                  -**S***layerstate*  
                                  -**T***doc-type*  
                                  -**V***view-type[page]*

*red:*                            **0...255**

*green:*                        **0...255**

*blue:*                         **0...255**

*page:*                         **0...**

*angle:*                        **{0|90|180|270}**

*layerstate:*                *hex-digit...*

*view type:*                 **{g|m|t}**

**Note:**     The Stack Header must be included in the format for MYRIAD to recognize the document stack. If you generate the document stack through an integration application, be sure to add the header shown above.

## **Option Descriptions**

The options used in the syntax above are listed below with their descriptions.

Format:        -Letter[value]

Example:      -I1

<b>-Bred green blue</b>	Sets the background color. The red, green, and blue values are integers from 0 to 255. For example, -B255 0 255 sets the background color to purple. <b>Note:</b> This overrides the setting in the Options dialog box.
<b>-Cminx miny maxx maxy</b>	Indicates the initial clip window for the view, or portion of the image displayed. For example, -C0.0 0.0 4.25 5.5 sets the clip window to the lower-left quarter of the image (assuming the document's full size is 8.5 by 11 inches).
<b>-Dmode</b>	Specifies the draw mode. 0     =     Sample 1     =     Full 3     =     Scale to Gray
<b>-Fred green blue</b>	Sets the foreground color. The red, green, and blue values are integers from 0 to 255. For example, -F255 0 255 sets the foreground to purple. <b>Note:</b> This overrides the setting in the Options dialog box.
<b>-Imode</b>	Indicates the invert mode. 1     =     On 0     =     Off
<b>-Lminx miny maxx maxy</b>	Specifies the outside limits of the image in inches. For example, <b>-L0.0 0.0 8.5 11.0</b> sets the image limits to 8.5 by 11 inches.
<b>-Oangle</b>	Indicates the orientation of the image. Valid values are 0, 90, 180, or 270.
<b>-Pmode</b>	Specifies the palette type. 0     =     Color 1     =     Monochrome
<b>-Slayerstate</b>	Sets the visibility of layers. It is a string of hexadecimal digits where each bit corresponds to a layer. For example, -S01 specifies that only layer 0 is visible, while -SFE specifies that of eight (8) layers, seven are visible and layer 0 is not visible.
<b>-Tdoc-type</b>	Indicates the document type or format. The type is specified by a two or three-character string: generally, the filename extension for that file type.
<b>-Vview-type[page]</b>	Sets the view type and page. The view type value can be: g     =     Graphics t     =     Text m     =     Markup

The pages are numbered starting with 0. If no page number is specified, 0 is assumed. For example, **-Vg1** sets the view type to graphics and the page to 1, which is actually the second page.

Example:

```
Informative Graphics Document Stack Version 3.0 Rev 1
DOCUMENT "objtstbw" -D0 -B200 200 200 -F0 0 255
    PAGE -L0.0000 0.0000 4.0000 5.0000
        "C:\documents\objtstbw.ps" -Tps -Vg
    ENDPAGE
ENDDOC
```

```
DOCUMENT "C:\documents\PROCESS.TIF" -D0
PAGE
    "C:\documents\PROCESS.TIF" -TTIF -Vg
    MARKUP C:\documents\PROCESS.mrk -S01
ENDPAGE
```

## 6.0 Troubleshooting

### Install

**Problem:** I have an evaluation version of MYRIAD installed on my machine in addition to my current version and now my MYRIAD browser plug-in launches the evaluation version.

**Solution:** Installing more than one version of MYRIAD is not recommended or supported. You will not be able to install the evaluation plug-in if more than one version is installed, and your current plug-in may launch the evaluation version in your browser. To have your current version launch, you can change the Application path registry key to point to the current executable again:  
HKEY\_LOCAL\_MACHINE\Software\Microsoft\Windows\CurrentVersion\App  
Paths\Myriad32.exe

If you also have PDF support using Acrobat, you will need to run the repair utility from *setup.exe* to reinstall the current version *myrpdf.api* in the Acrobat plug-ins folder.

**Problem:** I have an evaluation version of MYRIAD installed on my machine in addition to my current version and now I can't launch PDF files in my current version.

**Solution:** Installing more than one version of MYRIAD is not recommended or supported. You cannot have PDF support in more than one version simultaneously. If you have PDF support, you will need to run the repair utility from *setup.exe* to reinstall the current version *myrpdf.api* in the Acrobat plug-ins folder.

**Problem:** I am having trouble using the Inventor format with MYRIAD.

**Solution:** If you want Inventor support, you need to have Design Tracking version 8.0 or 9.0 software installed on your system. The MYRIAD CD contains the installation files for Design Tracking and you can click the Install Design Tracking button from your CD browser to select which version you wish to install and start the installation (or you can run **Setup.exe** from the Inventor folder on your MYRIAD CD). Myriad 7.x is not compatible with Design Tracking versions that are earlier than Inventor 7.0. If you are using a previously installed version of Design Tracking and are having trouble, running a Design Tracking installation contained on the MYRIAD CD should correct any issues. **Note:** You can view Inventor 8 files with Design Tracking 8.0 and you can view Inventor 9 files with Design Tracking 9.0. You cannot view Inventor 8 files with Design Tracking 9.0.

### NetSetup

**Problem:** I am running Windows XP with Service Pack 2 installed and cannot run a network copy of MYRIAD.

**Solution:** Windows XPSP2 users must adjust their Window's Firewall settings to accept MYRIAD. See the specific instructions in section 2.4.1 of this document.

**Problem:** I am using a network or local copy of Acrobat. When I try to launch a PDF file from the client machine, I get a message saying that it is loading Acrobat, but nothing happens.

**Solution:** If using a network copy of Acrobat, make sure the network Acrobat is shared and on the same machine as the MYRIAD server install. Go to the Acrobat\plug\_ins directory on the client machine and check for the Myrpdf.api file. If this is missing, copy it from the Acrobat\Plug\_ins directory on the network copy of Acrobat. Check the registry of the client machine for the following Acrobat keys (these are the keys MYRIAD uses to find the Acrobat plug-in):

HKEY\_CLASSES\_ROOT\AcroExch.App\CLSID\  
Under this key, the Default string should point to the Acrobat CLSID key:  
{85DE1C45-2C66-101B-B02E-04021C009402}

HKEY\_CLASSES\_ROOT\CLSID\{85DE1C45-2C66-101B-B02E-04021C009402}\LocalServer

Under this key, there should be a LocalServer subkey. This key's Default string value should point to the Acrobat.exe on your machine (or the network copy of Adobe if you used NetSetup). Make sure the LocalServer subkey is pointing to the correct path.

Also, Myrpdfps.dll and Myrpdf.exe may not have registered correctly. Verify that the two files are in the MYRIAD directory, and then try to re-register these two support files.

To do this:

1. Go to a command prompt and change to the Myriad directory.
2. Type:  
`<path to regsvr32.exe>\regsvr32.exe myrpdfps.dll`
3. You should see a message box indicating that the file was successfully registered. Click OK.
4. In the command window, type:  
`Myrpdf.exe/regserver`

As a last resort, you can uninstall and reinstall both Acrobat and MYRIAD.

**Problem:** The shortcut to MYRIAD on the client machine can't find MYRIAD.

**Solution:** Verify that the Netsetup.txt file in the NetSetup directory on the server machine contains the correct share path. Make sure they still have access to the server machine (it should be accessible through Network Neighborhood, for example). Check the properties for the shortcut and make sure the Target text box displays the correct path to MYRIAD. To check the properties, open My Computer or Window's Explorer and go to <Windows Directory>\profiles\<user login>\Start Menu\Programs\MYRIAD 7.0 and right-click on the MYRIAD 7.0 shortcut. Change to the Shortcut tab to review the Target information.

## **License Server**

**Problem:** My License Server service does not automatically start when I launch MYRIAD.

**Solution:** Verify that the server used has a static IP address. If DHCP is used, the server must be assigned the same address each time it requests one. This is because the IP address is encoded in the license key. Using the localhost address does not work. Verify that the service is not allowed to interact with the desktop:

1. In your Control Panel, click the Administrative Tools icon/Services (for Windows 2000, XP, and 2003 Server).
2. Highlight the Myriad License Server in the Service list and click Properties.
3. The Properties dialog displays. Click the Log On tab.
4. Verify that the "desktop in service" checkbox is cleared.

**Problem:** My License Server service does not automatically start when I launch MYRIAD.

**Solution:** To locate the cause, run *LicServInstall.exe* from a DOS prompt:

```
<path to MYRIAD>\LicServInstall.exe /P"licserv.exe"
```

**Problem:** My License Server does not automatically uninstall when uninstalling MYRIAD components.

**Solution:** To manually uninstall the License Server:

1. Stop the service. In your Control Panel, select the Services Icon. Select the Myriad License Server, and then click Stop.
2. In the registry, delete the following key:  
HKEY\_LOCAL\_MACHINE\System\CurrentControlSet\Services\Myriad License Server
3. Reboot the Machine.
4. Navigate to and delete your MYRIAD directory.

## 7.0 Contacting Informative Graphics

### Technical Support

You can reach our Technical Support Department Monday through Friday, 7am to 5pm Mountain Standard Time, via phone, fax, or e-mail. Please have the following information ready when you call or include on your fax or message:

- Your computer's make and model.
- Your video driver information.
- Makes and models of your printer and any other peripheral devices.
- Your MYRIAD serial number from your IGCKey.lic file.

**Phone:** (602) 971-6061

**Fax:** (602) 971-1714

**Internet E-mail:** [info@infograph.com](mailto:info@infograph.com)

**WWW:** <http://www.infograph.com/>

**FTP:** <ftp://ftp.infograph.com/>