

## MemoryAnalyst® 1.0 Help

### Help topics

[What is MemoryAnalyst for?](#)  
[MemoryAnalyst's screen description](#)  
[Properties dialog](#)  
[Analysis dialog](#)  
[How to register MemoryAnalyst](#)  
[Order Form](#)



### Executive Partners Software

7 rue du Général de Gaulle  
91240 St Michel sur Orge  
FRANCE

### How to contact us:

By E-Mail : 100430.1650@compuserve.com  
bdandrea@msn.com

By FAX : 33-1-60 16 75 92

By regular mail at the address above.

### **What is MemoryAnalyst for?**

MemoryAnalyst is a system tool from Executive Partners Software that allows you to trace memory status over time and to finally analyze your system efficiency.

### **How to use MemoryAnalyst?**

Start MemoryAnalyst and load all the applications you work with the most often (open and close windows like you would do during a real working session).

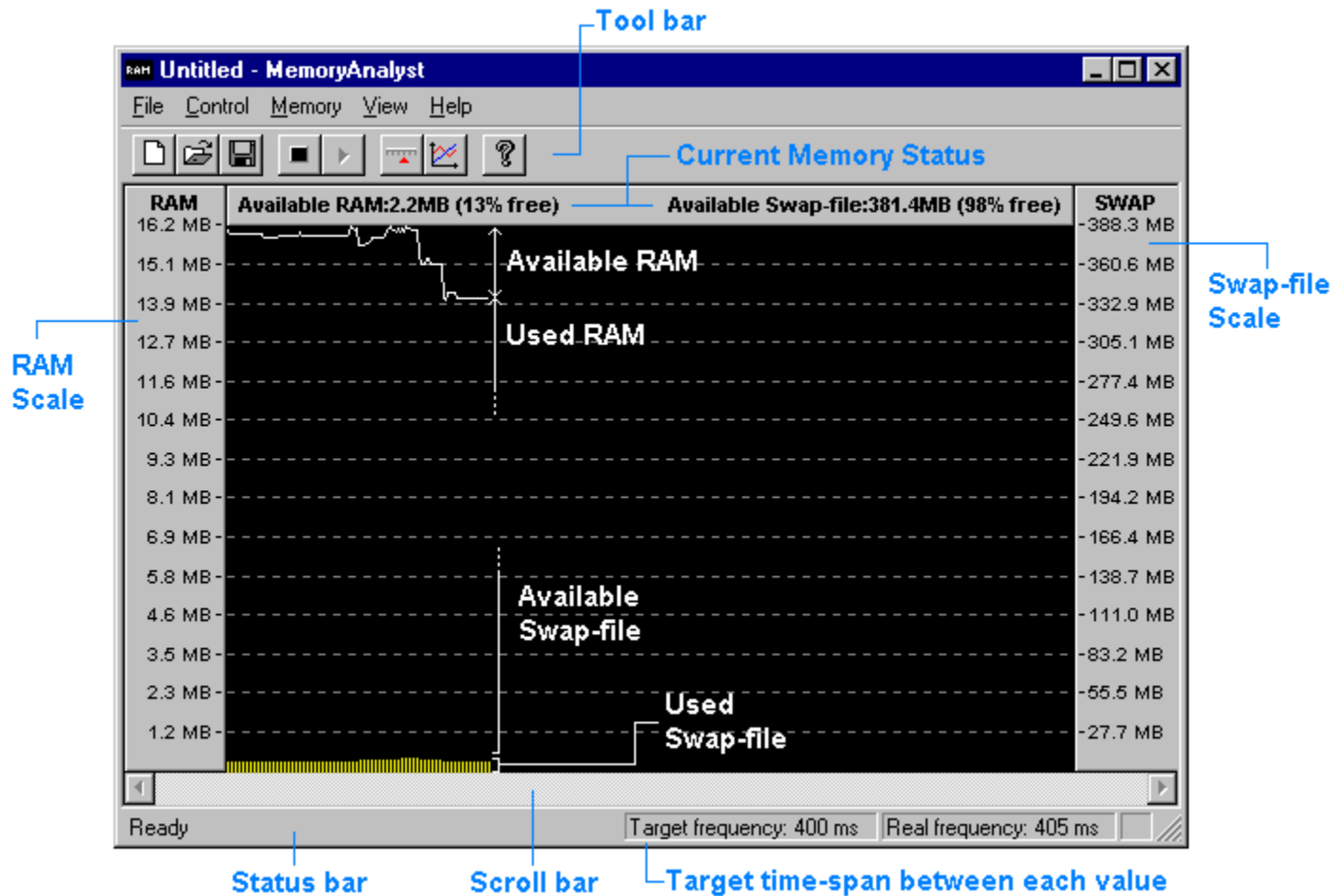
MemoryAnalyst will trace the memory activity in RAM as well as on the swap-file(setup by Windows to complement your RAM in case of insufficiency).

When you are done, stop the timer and call the Analysis dialog

See also : [Analysis dialog](#)

## MemoryAnalyst screen description

Following is a commented screen shot of MemoryAnalyst:



Note: a right-click in the MemoryAnalyst's screen gives you access to the following functions:

- Start and stop the timer,
- Show properties,
- Analyze recorded data,
- Show this help screen.

## Properties dialog

### Appearance

The Appearance part of the properties allows you to modify the look of the main window. You can enhance the view by hiding or showing the scales (for RAM and Swap-file).

You can also accommodate colors to what fits you best: just click the button of the element you want to adjust (RAM curve, Swap-file bars or the background) and select the new color.

### Execution

The Execution part of the properties allows you to fine tune MemoryAnalyst's behavior in the following ways:

- Frequency : adjust the number of values per second to graph. For example, 200 milliseconds means that MemoryAnalyst will check memory 5 times per second and graph 5 points.

Be careful not to use too small values: 100 ms means 10 values per second and most systems have a hard time keeping up with such a frequency because of the other applications running at the same time. The frequency you set here will be displayed at the bottom of the main window as the Target Frequency. Next to it will be displayed the Real Frequency (the one the system really runs at).

- Don't graph values : if you check this option, the main window will remain black during the recording of memory status. This allows other applications to run faster while you trace memory. Check this option if you notice a general slow down with very fast frequencies (less than 300 ms).

- Beep : this option, if set, allows you to hear a beep if the RAM memory drops below the set value. This is useful to warn you and to allow you to close some applications.

- Keep only last xxx values : if you run MemoryAnalyst for hours, you should turn this option on because the recorded values will affect MemoryAnalyst's result. For example, if you run at 200 ms for 2 hours, MemoryAnalyst will have recorded 36000 values eating about 300KB of memory (each value recorded eats 8 bytes of memory: 4 for RAM and 4 for the Swap-file).

To validate your changes, click OK, otherwise, click Cancel.

All the properties (except colors) will remain as you have set it the next time you run MemoryAnalyst.

## Analysis Dialog

### General

The General part of the analysis is there to inform you of the following:

- Your system: how much RAM you have in your computer and what size has Windows95 set up for your swap-file (the bigger your available disk space; the bigger the swap-file will be).

- MemoryAnalyst : the number of recorded values and the time elapsed since you started recording (those values are use to compute the Real Frequency showed at the bottom of the main window).

- Swap-file use : minimum, maximum and average amount of memory stored in the swap-file.

RAM use : minimum, maximum and average amount of memory stored in RAM.

### Conclusion

The conclusion is where you will find out if your system is equipped with enough, too much or the right amount of RAM memory.

The way we have designed this module is what we find the most accurate to real-life problem solving (even though it's an approximation): you have to define a percentage of total memory (called Virtual Memory) that has to fit in RAM memory (much, much faster than swap-file memory). According to our test, if 50 % of Virtual Memory fits in RAM, your system is running smoothly. Below, the system gets slower and above, the system runs faster.

By default, 50% will be the value displayed in conclusion.

**Be aware** : Windows 95 manages RAM memory in conjunction with the swap-file memory to obtain the best result possible (well, it should be that way...) and the effect is that you will never have a zero swap-file use even with 1 Giga-byte of RAM!. On the other hand, don't be surprised to see your RAM memory filled at least at 80% most of the time: Windows 95 will use free available RAM to store the most recent used blocks of memory to speed up most used things (for example, if you run an application twice, the second load will be faster than the first because some of the first load will have remained in RAM).

The point here is that values in the conclusion part above 80% have no practical significance because even though you would apply the result (that is higher the amount of RAM in your system), your system won't run significantly faster.

## How to register?

### MemoryAnalyst ® 1.0

**Ordering by check:** To order by check, send this [order form](#) and a check to B. D'Andrea. Payment must be in US dollars drawn on a US bank, or you can send international postal money orders in US dollars.

**CompuServe Registration:** To have the registration fee added to your CompuServe bill use the CompuServe command GO SWREG and follow the menus. MemoryAnalyst's registration ID is 8253.

**When you register:** you will be sent a registration key that removes the UNREGISTERED message and we will keep you informed of newer versions as well as our upcoming exciting products.

Comments are welcome. Registration keys will be sent by E-MAIL if you provide your address, otherwise by regular mail.

The EP Soft team thanks you for your support.

**FRANCE residents:** To order by check, send this [order form](#) and a check to EP SOFT of 60FF drawn on a French bank.

## Order Form

To print this form, click on Print Topic in the File pull-down menu.

Fill and send this form to us by mail, fax or E-Mail (see our address in this Help file [Contents](#)):

I want to register \_\_\_\_ copies of MemoryAnalyst at \$12 each = \_\_\_\_\_

Total payment : \_\_\_\_\_

Name : \_\_\_\_\_  
Company : \_\_\_\_\_  
Address : \_\_\_\_\_  
City : \_\_\_\_\_  
State : \_\_\_\_\_  
ZIP : \_\_\_\_\_  
Country : \_\_\_\_\_  
Phone : \_\_\_\_\_  
Fax : \_\_\_\_\_  
E-Mail : \_\_\_\_\_

Comments about MemoryAnalyst :

---

---

---

---

---

Site licenses available at lower rates.  
Dealers, contact us.

