



Chapter 1

Before Getting Started

1.1 Main Features	2
1.2 System Requirements	4
1.3 Package Contents	5
1.4 Purchasing DVD Titles	6

overlay the best screen without other video boards. It also has auto alignment function. It can overlay up to 1280x1024, True Color, 72Hz VGA screen with DVD screen on any VGA. It also can freely change the size and position. Since it supports 100% independence of the VGA board, it can be used with any kind of VGA board.

2. Fully supports standard DVD spec

DVD VISION II fully supports standard DVD spec. It supports many kinds of interactive functions like multi-language function, which can support up to 8 languages, multi-subtitle function, which can support up to 32 film titles, and multi-angle, which can support up to 9 camera angles.

3. Fully supports up to Video CD 2.0

DVD VISION II not only supports Video CD 1.0/1.1, but can also play conversational Video CD(ver. 2.0). Using menu screen and number key, you can select and view the requested screens. It supports 30 frames per second which gives you view clean and smooth video screen.

4. Auto alignment function - BOB/WEAVE mode select

To support best screen quality when changing overlay screen's size and position, DVD VISION II supports Auto alignment function. It can support smooth and clean screen by using line-doubling technology. So it can eliminate blinking, and irregular screens.



5. High quality picture and digital sound

DVD VISION II uses MPEG-2 technology and supports the quality picture and digital sound. DVD VISION II has its own overlay function(Max of 1280x1024), and down-mix function for an ordinary 2-channels speaker system. While DVD VISION II supports a digital sound, you can enjoy the same live feeling that you do in the movie theater.

6. TV Output [Optional]

The optional board for DVD VISION II supports a composite video and S-video output, and you can display the picture on the TV tube as well as on the monitor simultaneously. The high quality picture of the basic 4:3 and wide 16:9 from DVD titles can be displayed.



1.2 System Requirements

DVD VISION II only requires a Pentium™ 100MHz CPU system for DVD playing. The other tasks(Multitasking) can be executed while DVD is playing.

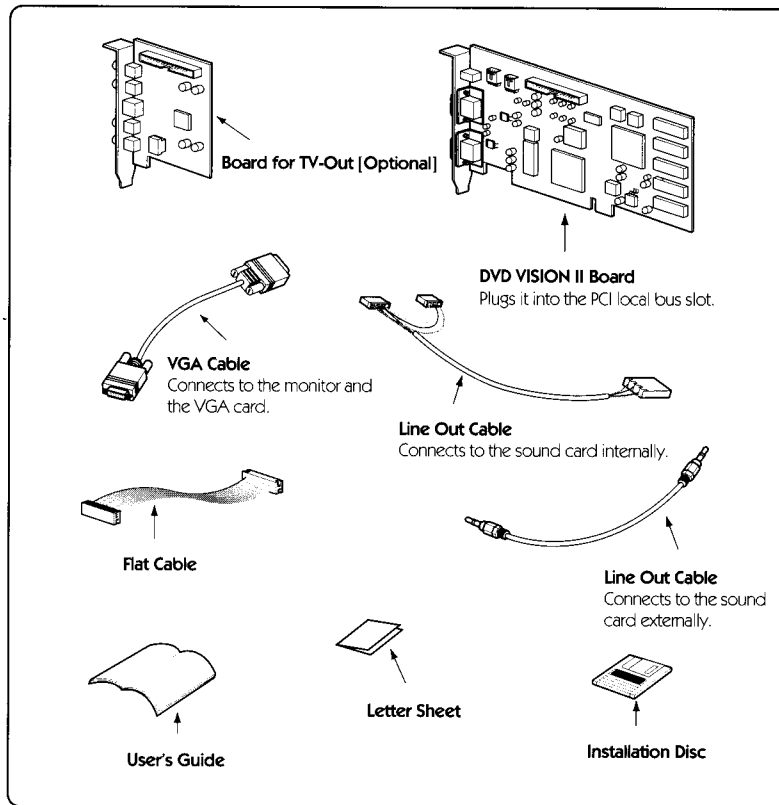
Hardware and software requirements for DVD VISION II are as follows;

System:	IBM Compatible PC (Minimum of Pentium™ 100MHz CPU)
Expansion Slot:	Supporting PCI local bus 2.1
Operating System:	Windows95/OSR2
Memory:	Minimum of 16MB
Monitor:	VGA or Multi-sync
Sound Card	
DVD-ROM Drive	



1.3 Package Contents

DVD VISION II package contains the following items;



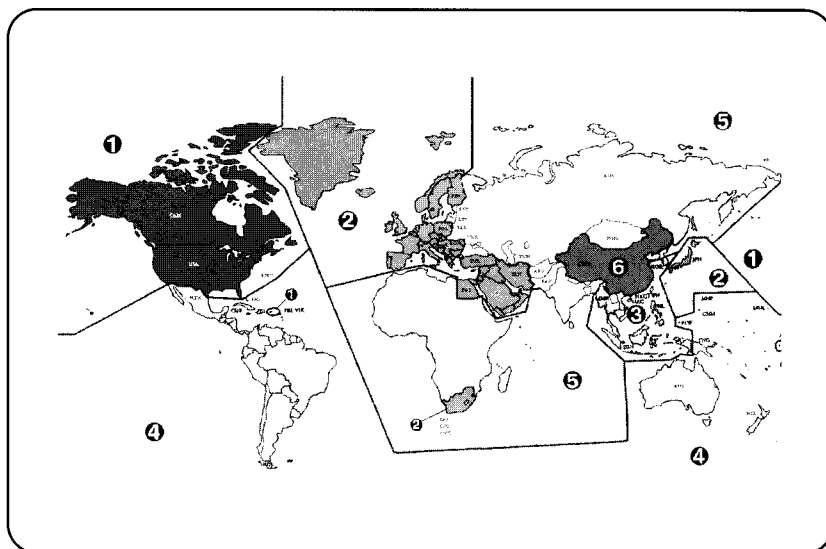
<INT.1>Package Contents

- *There may be some future changes in the package contents.*



1.4 Purchasing DVD Titles

DVD VISION II supports the Regional codes. Therefore, make sure to use the DVD titles, which have an appropriate regional code, the mark ALL, or no regional codes.



- ❶ Canada, U.S., and U.S. Territories
- ❷ Japan, Europe, South Africa, Middle East(including Egypt)
- ❸ Southeast Asia, South Korea, East Asia(including Hong Kong)
- ❹ Australia, New Zealand, Pacific Islands, Central and South America, Caribbean
- ❺ Former Soviet Union, Indian Subcontinent, North Africa, North Korea, Mongolia
- ❻ China



Chapter 2

Hardware Installation

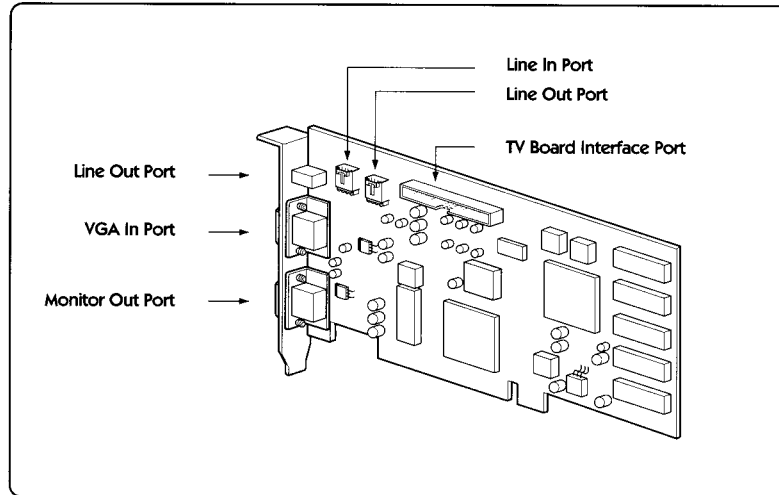
2.1 About the Board	8
2.2 Before Installation	9
2.3 Board Installation	10



2.1 About the Board

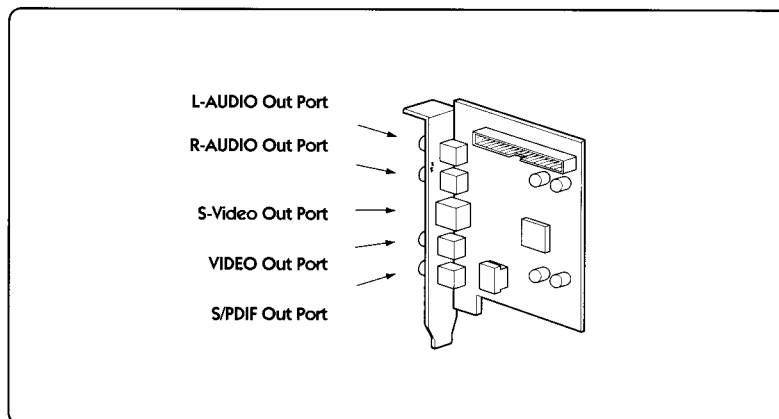
8

DVD VISION II Board



<INS.1> About the DVD VISION II Board

Board for TV-Out [Optional]



<INS.2> About the Board for TV-Out



S/PDIF Out Port

The connection cable for Dolby Digital 5.1 channel sound system. You can listen to fascinating Dolby Digital 6 channel sounds when connected to an appropriate sound system.

This connection cable should come with the sound system, and is not included in the DVD VISION II package.

2.2 Before Installation

DVD VISION II complies with the PCI local bus 2.1 specification. If your system does not fully support the specification, DVD VISION II may not operate properly on your system.



1. Touch the grounded part of the PC first to protect the components on the board from static electricity.
2. Make sure the power of the entire system is off before installing. If you leave it on, it may cause serious damages to the board.
3. Remove all cables connected to your computer before taking off the system cover.



2.3 Board Installation

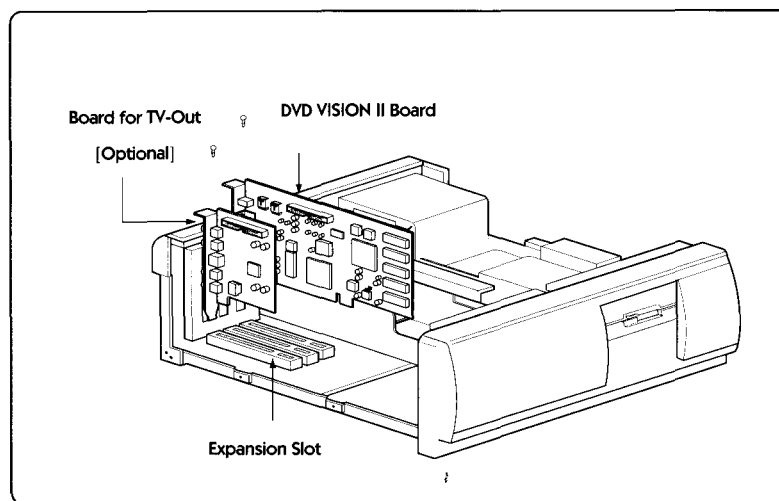
10

1. Inserting the DVD VISION II Board

Turn off your computer and peripherals, and then take off the system cover and insert the DVD VISION II board into the a local bus slot.

Insert the board by holding on the top part of the board and push it until it completely locks in the slot. Fasten the screws on the bracket using a screw driver.

When you are using the optional board for TV-Out, put it in proper location and fasten the screws on the bracket.

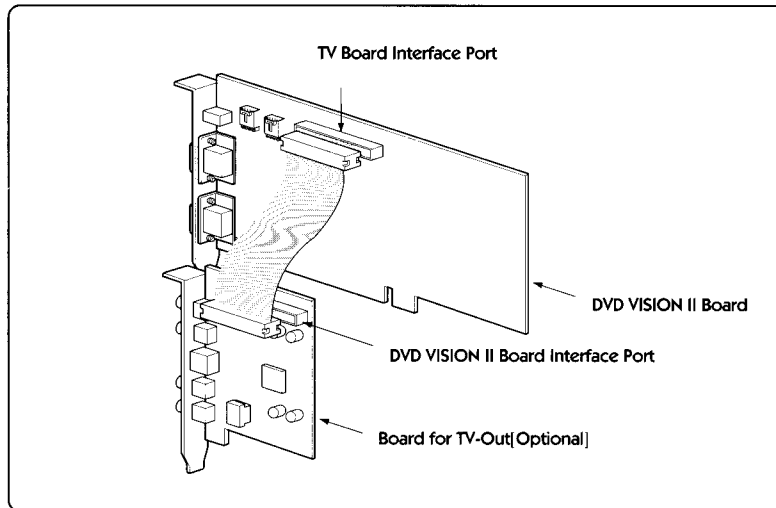


<INS.3> Inserting the DVD VISION II into the PCI Local Bus slot



2. Connecting DVD VISION II / TV-Out Board [Optional]

Connect the TV board interface port on the DVD VISION II to the DVD VISION II board interface port on the optional board for TV-Out using the flat cable.

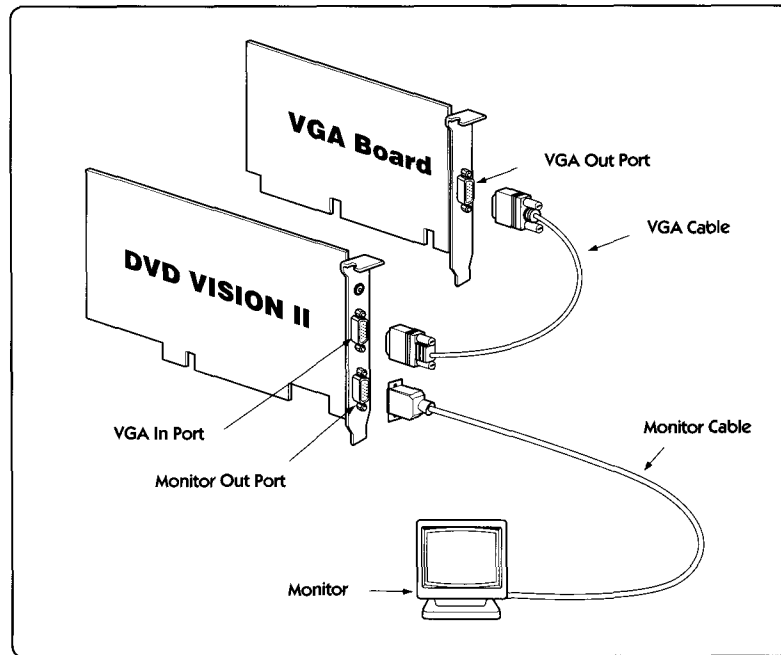


<INS. 4> Connecting DVD VISION II / Optional board for TV-Out

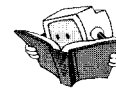


3. Connecting VGA / Monitor

Connect the VGA In port on the DVD VISION II and VGA Out Port on the VGA card using the VGA cable. And connect the Monitor Out port on the DVD VISION II and your monitor using the monitor cable.

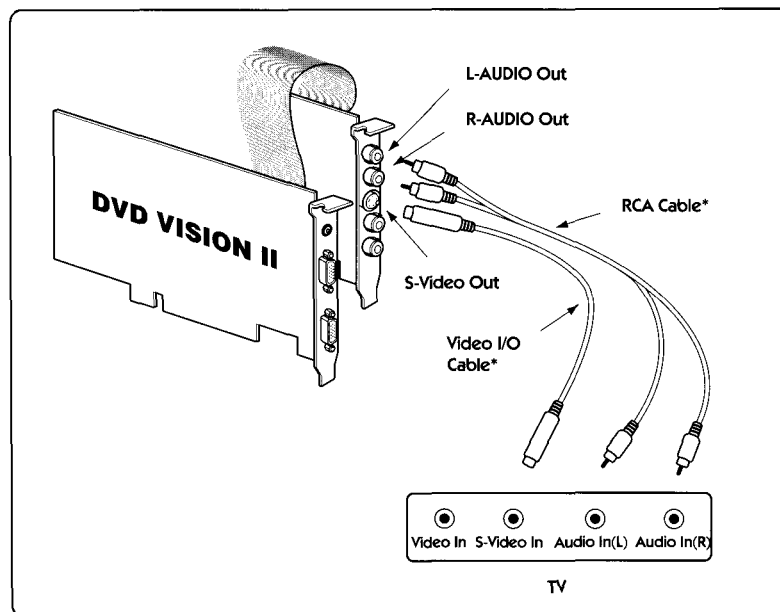


<INS.5> Connecting Monitor / VGA



4-1. Connecting To a TV Supporting S-Video Port

Connect the L-AUDIO, R-AUDIO Out port on the optional board for TV-Out and a TV set using the RCA cable, and connect the S-Video Out port and a TV set using the Video I/O cable.



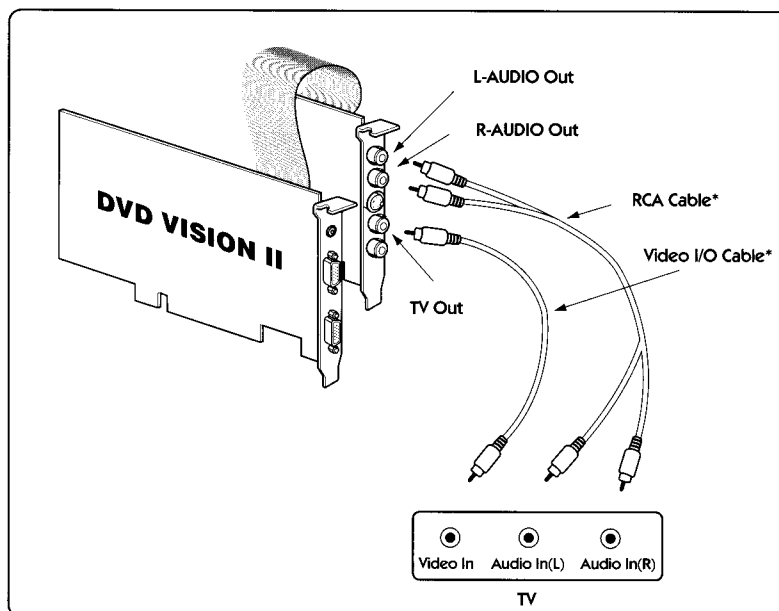
<INS.6> Connecting to a TV supporting S-Video

- Cables with the * mark are not included in the DVD VISION II package.



4-2. Connecting To a TV Not Supporting S-Video Port

Connect the TV Out port on the optional board and a TV set using the Video I/O cable.



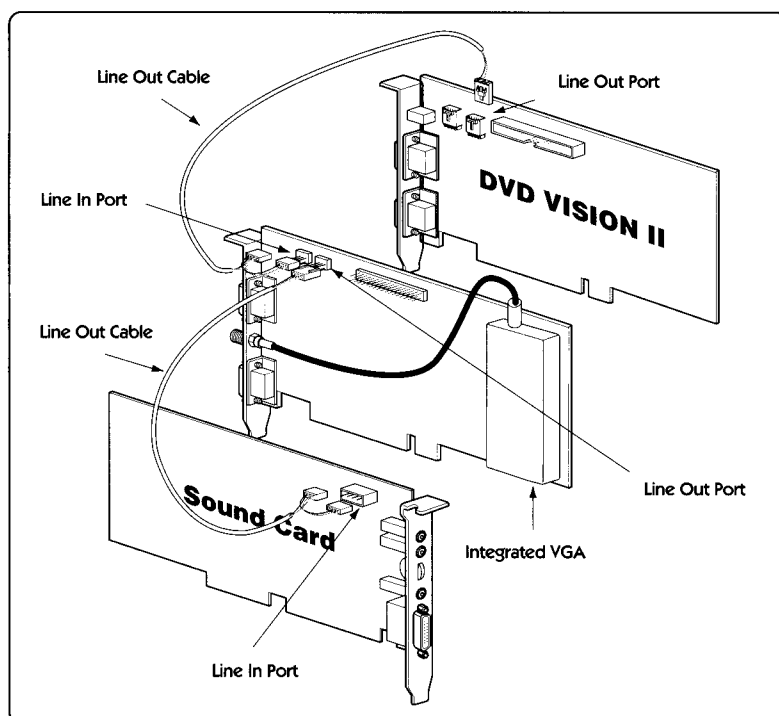
<INS.7> Connecting to a TV

- Cables with the * mark are not included in the DVD VISION II package.



5-1. Connecting to a Sound Card Internally

Connect the Line In port on your Integrated VGA to the Line Out port on your DVD VISION II using the Line Out cable.

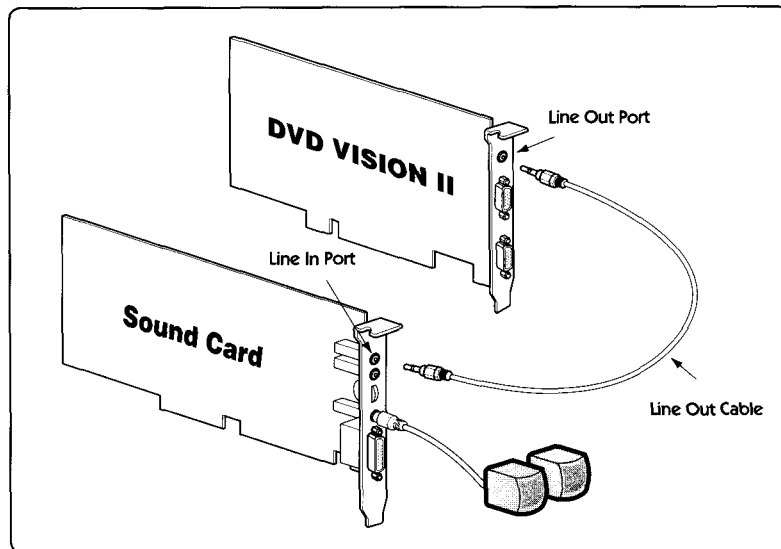


<INS.8> Connecting to a sound card internally



5-2. Connecting to a Sound Card Externally

If your sound card only has one CD In port and the port is connected to the DVD-ROM Drive, DVD VISION II and the sound card should be connected externally. Connect the Line In port on your sound card to the Line Out port on the DVD VISION II using the Line Out cable.



<INS.9> Connecting to a sound card externally



Chapter 3

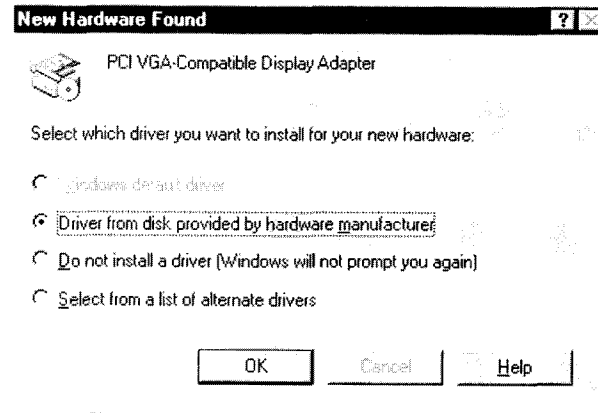
Software Installation

3.1 PnP Driver Installation	18
3.2 Application Software Installation	19
3.3 Configuration Setup	23

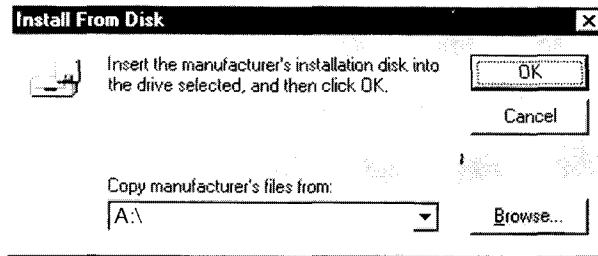


3.1 PnP Driver Installation

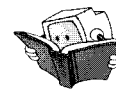
1. When you start up the system after the DVD VISION II hardware installation, DVD VISION II is automatically recognized by Windows95, and the *New Hardware Found* window will appear. Select **Driver from disk provided by hardware manufacturer**, then click **OK**.



2. Insert the DVD VISION II installation diskette into the floppy disc drive. Type **A:** then click **OK**.

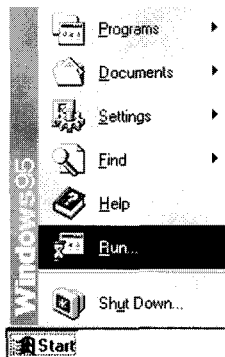


3. After the *File-copying* window disappears, PnP Driver installation will end.

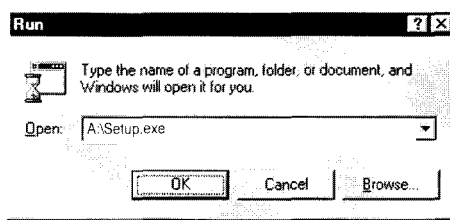


3.2 Application Software Installation

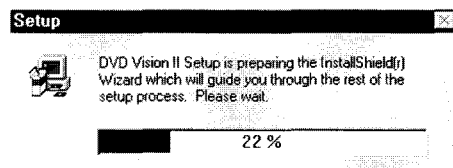
1. Select *Start - Run....*



2. Insert disk #1 into your floppy disc drive. Type **A:\Setup.exe**, then click **OK**.

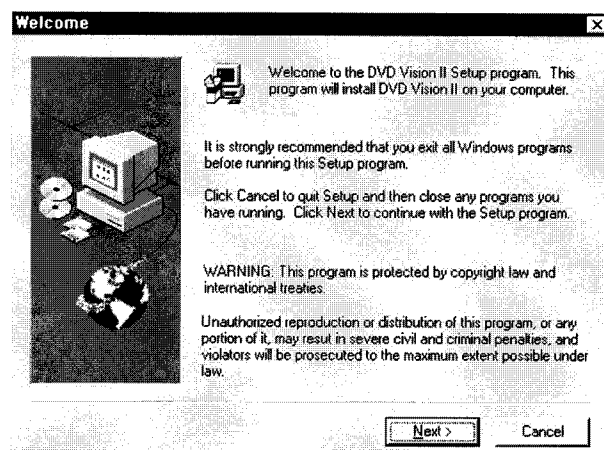


3. The *Setup* window appears and informs the starting of Setup process.

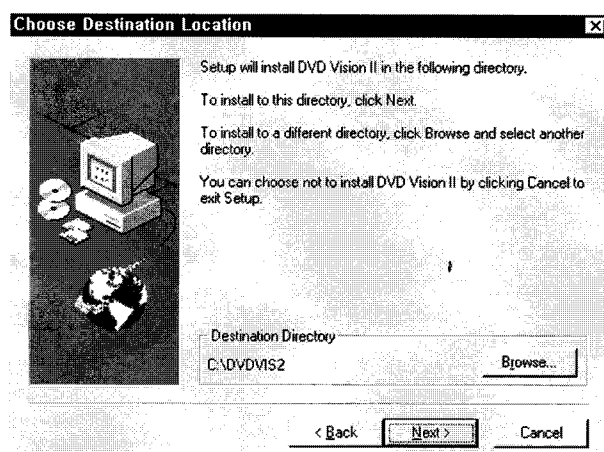




4. When the *Welcome* window appears, click the **Next** button.

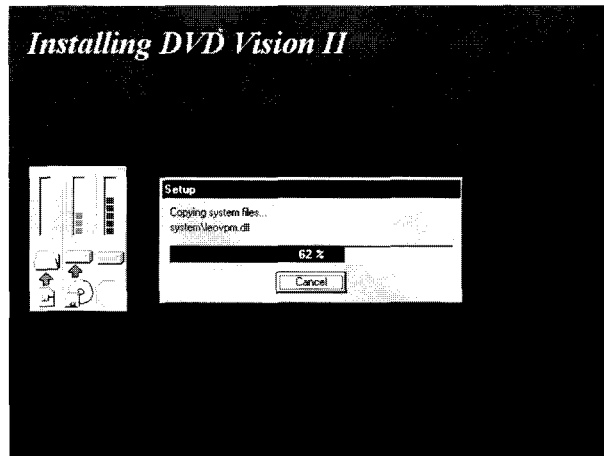


5. The *Choose Destination Location* window appears and asks which directory you want to install DVD VISION II. If you want to install to the default directory, C:\DVDVIS2, click the **Next** button. You can also use the **Browse...** button to search for another directory.

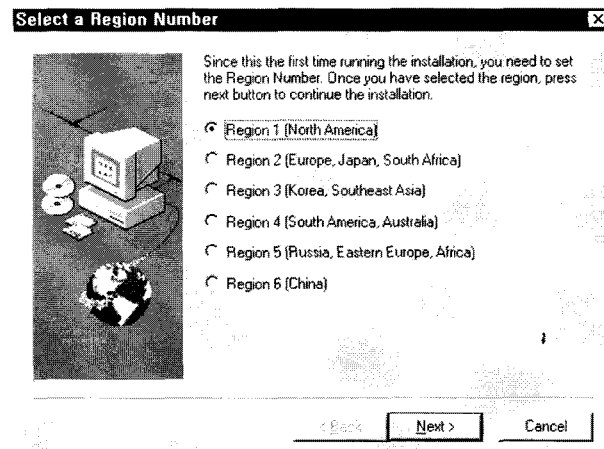




6. The *Installing DVD VISION II* window appears.

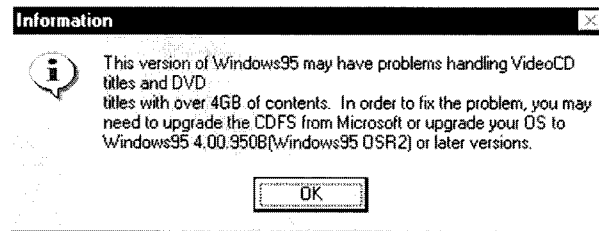


7. When the *Select a Region Number* window appears, select the region and click the **Next** button.

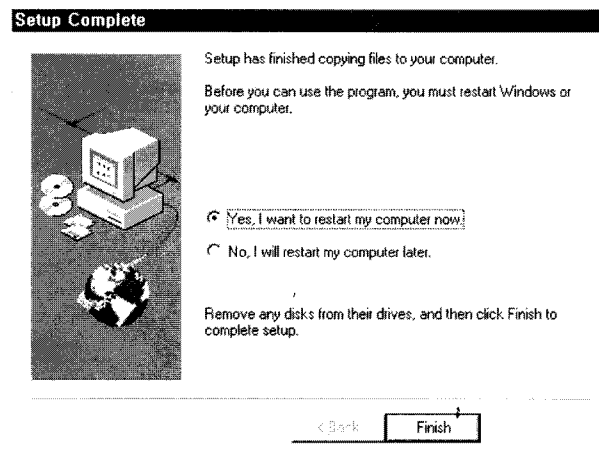




8. The *Information* window appears. If you don't have Windows95 / OSR2 version. And warns about the problem handling Video CD titles and DVD titles with over 4GB of contents. Please read it carefully, and then click the **OK** button.



9. The *Setup Complete* window appears and informs that the Setup has finished copying files to your computer. Choose **Yes, I want to restart Windows now**, and then click the **Finish** button.

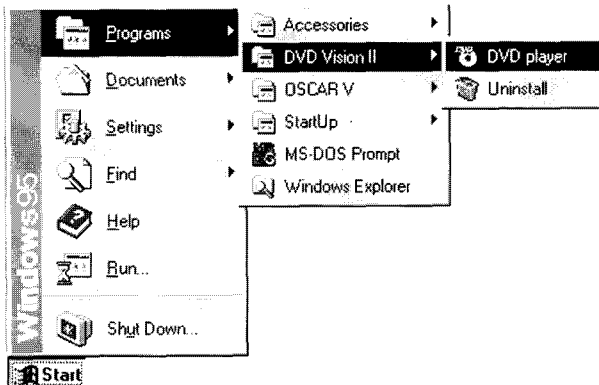


10. Finally, the DVD VISION II group folder is automatically created after you restart your Windows. Now you can enjoy many features offered by DVD VISION II. From now on, please refer to **Chapter 4**.

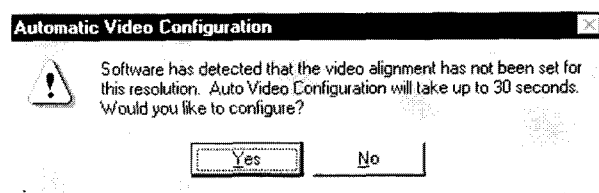


3.3 Configuration Setup

1. Select *Start - Program - DVD VISION II - DVD player*.



2. When you start the DVD player for the first time, the *Automatic Video Configuration* window appears and asks whether you would like to configure the video alignment automatically. Click the **Yes** button.

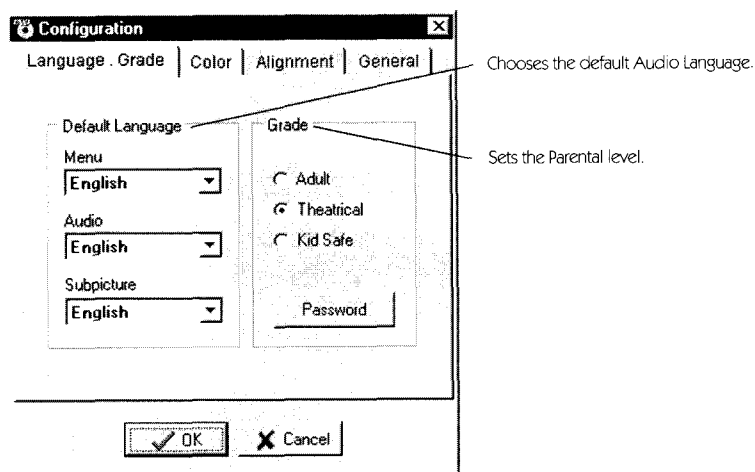


3. When the DVD VISION II control panel appears, click the **Configure** button for making setup the various environment.

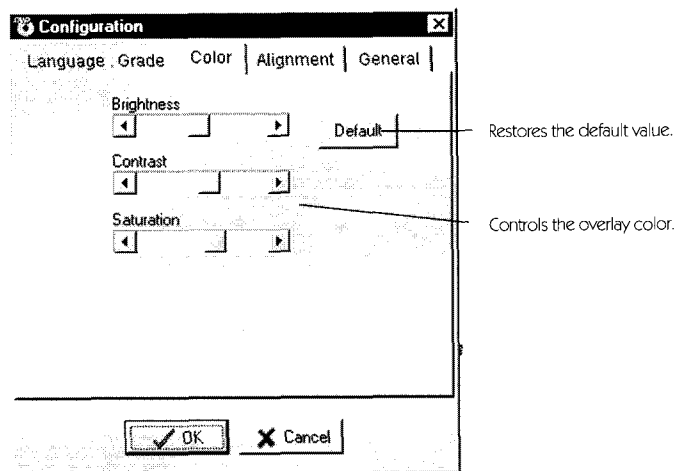




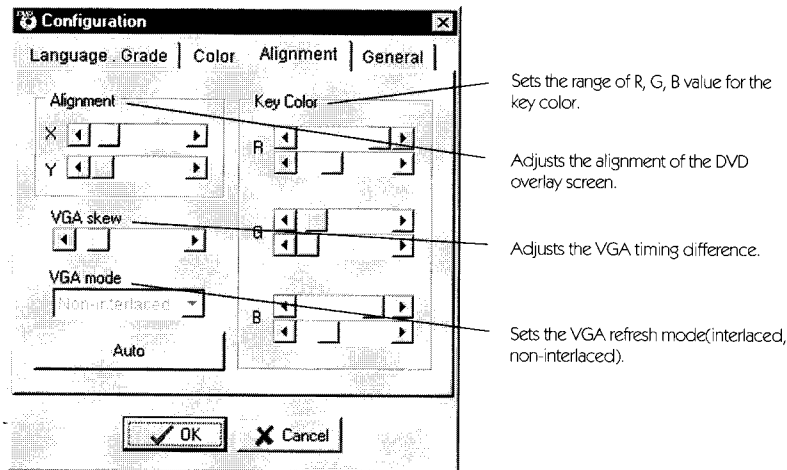
Configuration panel: Language · Grade



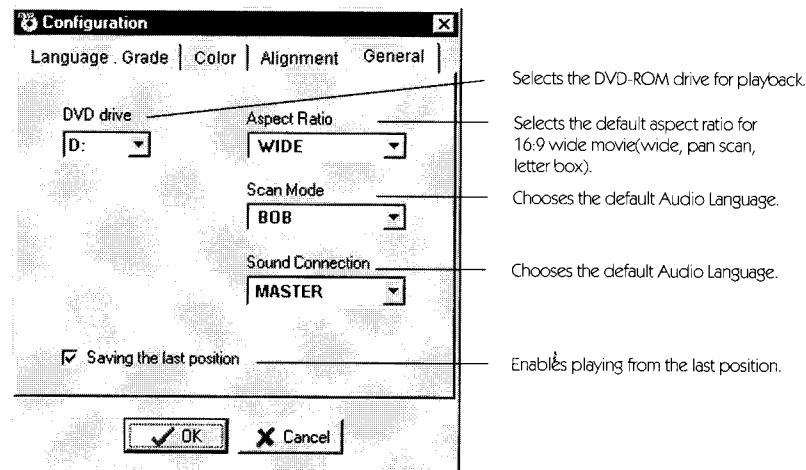
Configuration panel: Color



Configuration panel: Alignment



Configuration panel: General







Chapter 4

Using Program

4.1 Summary of Initial Screen	28
4.2 DVD Screen	29
4.3 DVD Control Box	30
4.4 Video CD Control Box	32
4.5 Menu	33
4.6 Main Functions	34
4.7 Supplementary Functions	36



4.1 Summary of Initial Screen

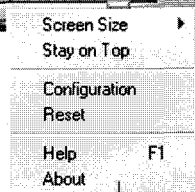
DVD VISION II provides you with many useful features for DVD and Video CD playback.

DVD Screen

Shows the changes of Audio Language, Subpicture Language or angle on the upper left corner. You can move and resize the screen using your mouse.



DVD/Video CD Control Box
Controls the DVD/Video CD playback. You can move the control box using your mouse.



Menu
Clicking right mouse button on the control box or pressing the <F2> key brings above menu.



4.2 DVD Screen

Shows the changes of Audio Language, Subpicture Language or angle on the upper left corner. You can move and resize the screen using your mouse.



Pressing <Space>, or Double clicking on the DVD Screen

Maximizes and restores the size of the screen.

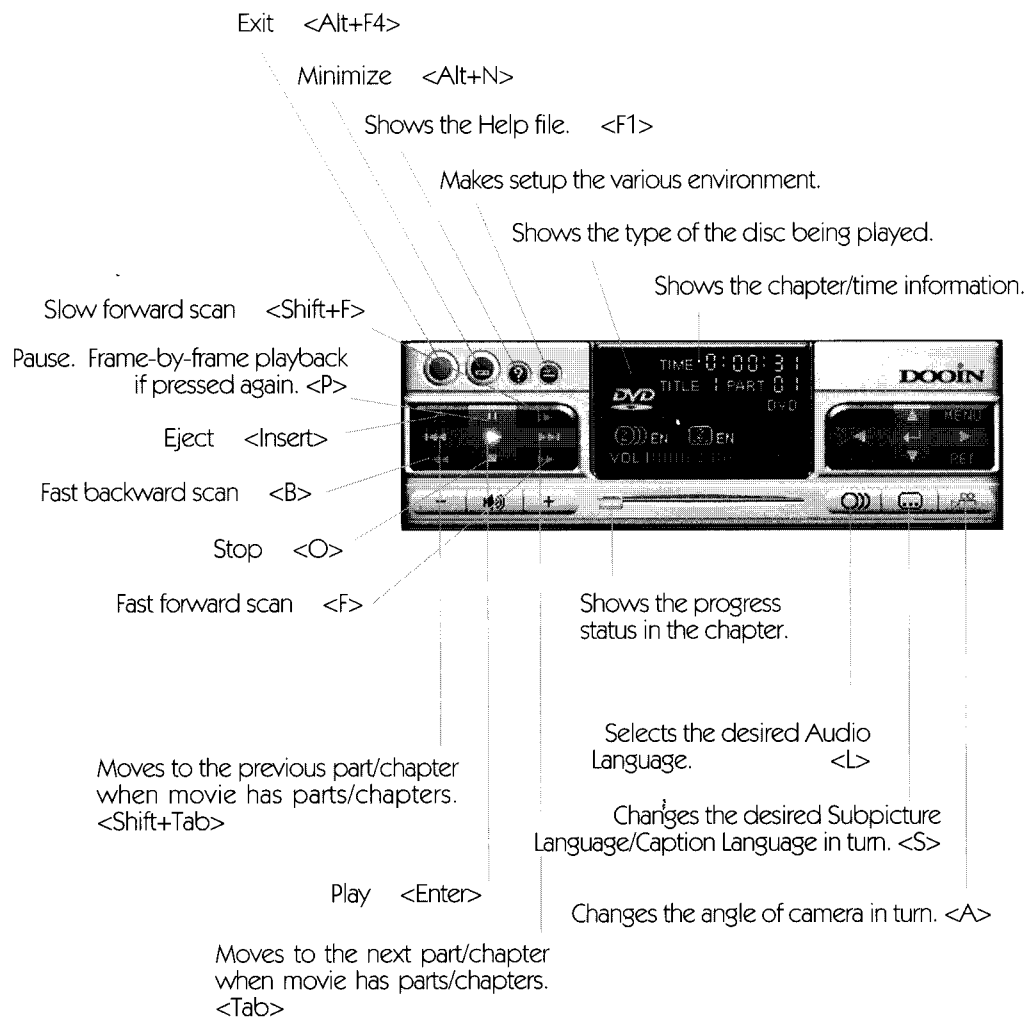
Clicking the Right Mouse Button

Brings the control panel to the top when it's hidden under other windows.



4.3 DVD Control Box

Controls the DVD playback. You can move the control box using your mouse.





Shows the number of available Audio Languages and the selected Audio Language.

Shows the number of available Subpicture Languages and the selected Subpicture Language.

Indicates that different camera angles can be set.

Shows the volume information.

Displays title menu, if exists. <T>

Moves the selection up in a menu screen. <↑>

Displays the menu of a DVD title. <M>

Moves the selection to the right in a menu screen. <→>

Chooses the selection in a menu screen. <Enter>

Moves the selection to the left in a menu screen. <←>

Volume up <→>

Mute <Delete>

Volume down <←>

Resume <R>

Moves the selection down in a menu screen. <↓>

Returns to the previous menu. <N>





4.4 Video CD Control Box

Controls the CD playback. You can move the control box using your mouse.

Shows the chapter/time information.

Shows that repeat mode is set.

Shows the type of the disc being played.

Selects a menu item in a menu screen.



Repeats the chapter.

Returns to the menu screen.

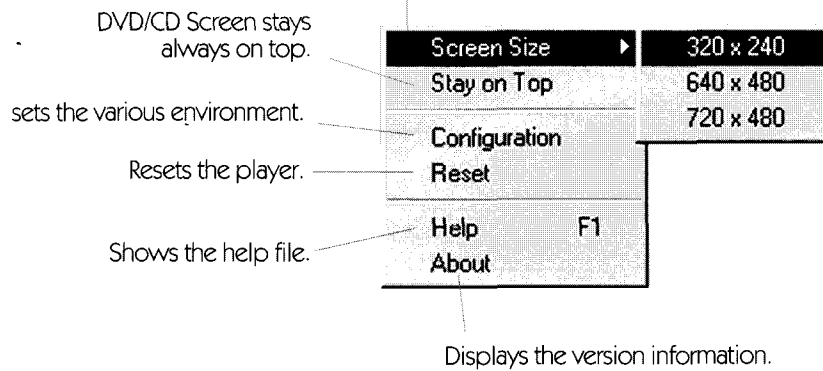
Shows CCI(Closed caption Interface) window.
Clicking right mouse button will bring up the CCI menu.



4.5 Menu

Clicking right mouse button on the control box or pressing the <F2> key brings the following menu.

Resizes the DVD/CD display screen to the previously defined sizes (320 × 240, 640 × 480, 720 × 480).



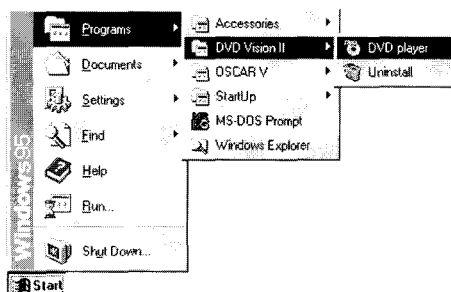


4.6 Main Functions

DVD VISION II not only plays DVD titles perfectly, but can also play Video CD(ver. 1.0/1.1/2.0) by hardware.

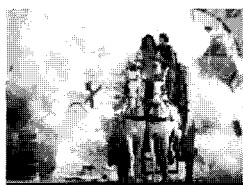
4.6.1 Playing DVD/Video CD Title

1. Select *Start - Program - DVD VISION II - DVD Player*. The DVD Screen and the Control Box will appear.



2. Place a DVD/Video CD title on the DVD-ROM drive tray. According to the type of a title, the control box appears differently.

DVD title Playback




Video CD title Playback






4.6.2 Audio Language Selection

In case that your title contains the Multi Audio Language feature, you can select the desired Audio Language.

1. During playing a title, select () button on the control box, or press the <L> key on your keyboard.
2. Select the desired Audio Language among the languages displayed on the screen.


4.6.3 Subpicture/Caption Language Selection

In case that your title contains the Multi Subpicture/Caption Language feature, you can select the desired Subpicture/Caption Language.

1. During playing a title, select () button on the control box, or press <S>.
2. Select the desired Subpicture Language among the languages displayed on the screen.
3. If you want to play a DVD/Video CD movie without any Subpicture/Caption Language, select **OFF**.

4.6.4 Angle of Camera Selection

In case that your title contains the Multi Angle feature, you can select the desired angle of camera.

1. During playing a title, select () button on the control box, or press <A>.
2. Select the desired angle among the angles of camera displayed on the screen.



4.7 Supplementary Functions

36

4.7.1 Viewing Full Size Screen

Double click the left mouse button on the DVD screen or press the **<Space>** key on your keyboard.

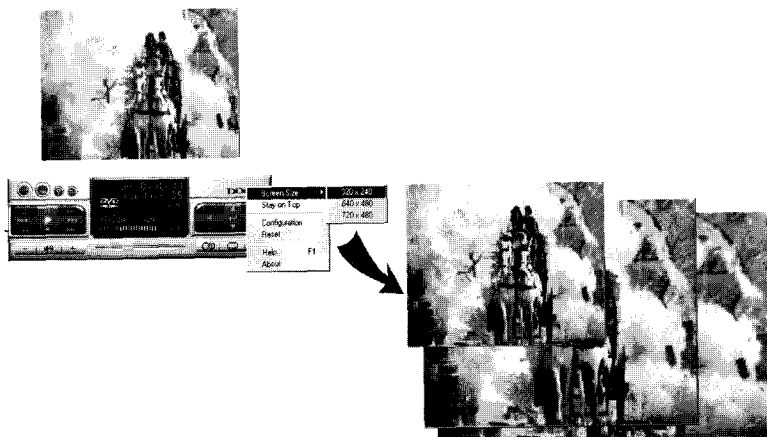




4.7.2 Adjusting Screen Size

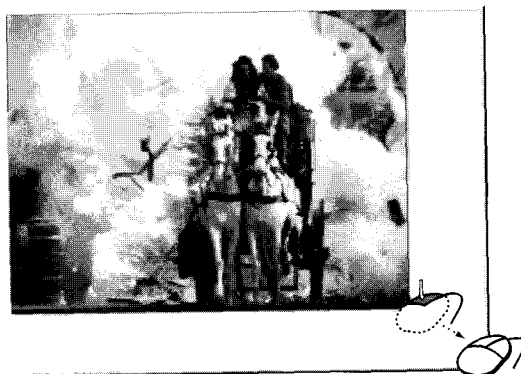
Fixed Size Selection

Select the **Screen Size** from the menu option. You can select the screen size from three different sizes (320 × 240, 640 × 480, 720 × 480).



Free Size Selection

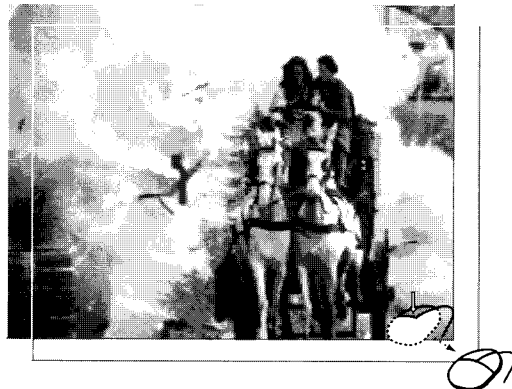
To adjust the screen size freely, position the cursor on the corner of the screen and drag it to your preferred size.





4.7.3 Adjusting Screen Position

To relocate the screen position, click the inner part of the screen and drag it to your preferred location.





Chapter 5

Appendix

5.1 Troubleshooting	40
-------------------------------	----



5.1 Troubleshooting

40

Symptoms	Solution
Pink dots appear on the overlay screen.	Adjust the key color on the Alignment tab in the Configuration panel(Try adjusting G value).
Only a part of the overlay screen shows when VGA refresh rate is changed.	Press Auto button on the Alignment tab in the Configuration panel.
When a new movie title is inserted, a scene from the last movie shows for a brief second.	This should not affect the operation of DVD playback. The overlay window is just showing memory contents of the frame buffer.
Pink lines appear on the bottom of the overlay screen.	This happens when the VGA is in Interlaced mode. Press Auto button on the Alignment tab in the Configuration panel.
When the cursor or a window is positioned on the overlay screen, pink line shows on the right boundary of the object.	Adjust RGB and Alignment value on the Alignment tab in the Configuration panel(It might not be possible to get rid of the pink lines completely due to VGA differences).
The overlay window looks translucent.	Adjust the key color on the Alignment tab in the Configuration panel.
The overlay window has wave-like-noises.	Adjust VGA skew on the Alignment tab in the Configuration panel.
Windows does not properly recognize PnP Driver. Device Manager does not show the proper hardware name and has an exclamation mark.	Other hardware using Aura Vxp524 will cause this problem.



Symptoms	Solution
DVD movies exceeding 4GB of contents do not play(e.g. Golden Eye).	You need to use Windows95 OSR2 (4.00.95B) or later versions to fix the problem. Alternatively, you can just update CDFS from Microsoft if possible. Also try installing CDCHANGER.EXE from Microsoft web site.
Movie does not start playing at all.	Check the following: 1. DVD-ROM drive is not empty. 2. VGA cables is connected. 3. Program is properly setup.
Video CD movies play with jerky motions.	Check the following: 1. Toshiba's 2nd generation DVD-ROM drives may not play DVD titles correctly. 2. Use separate cable when connecting the hard disk drive and DVD-ROM drive to the motherboard. 3. You may need to update your CDFS from Microsoft if you are not running Windows95 OSR2 or later versions.
DVD movies play with jerky motions.	Check the following: 1. Title may be dirty or has scratches. 2. DVD movie exceeds 4GB and you are not running Windows95 OSR2 or later versions. 3. DVD-ROM drive is Toshiba's 2nd generation model.
Slow Forward does not work with Video CD movies.	This feature is not supported.
The position slider bar does not work, and the application does not remember the position of the last movie played.	This problem occurs when the movie titles do not contain time information.
When VGA refresh rate is changed, the movie is paused for about 3 seconds and then starts playing again.	This operation is implemented to prevent the jerky motions during the movie play.



Appendix