

# EZ-Split Help Table Of Contents

For help with EZ-Split, choose a topic from the choices listed below:

## **General**

[Program Overview](#)

[How To Register EZ-Split](#)

[Technical Support](#)

## **Program Operation**

[Main Window \(Splitting To Floppy Diskette\)](#)

[Main Window \(Splitting To A Hard Drive\)](#)

[Different Ways To Start EZ-Split](#)

## **Options**

[Options Dialog \(General\)](#)

[Options Dialog \(Source File\)](#)

[Options Dialog \(Floppy Diskette Split\)](#)

[Options Dialog \(Hard Drive Split\)](#)

## **Reference**

[Menu Commands](#)

# Program Overview

Welcome to EZ-Split, the easy to use file splitter. Simply put, EZ-Split allows large files to be broken down into manageable pieces. Files can be split to floppy diskette or to a hard drive.

Here are a few scenarios to show how EZ-Split can come in handy:

- While at work, you download a file (demo software, game, etc) from an online service. You want to take the file home, but it's too big to put on a single diskette. What now? With EZ-Split, you can split the file to diskettes, and rejoin the file at home.
- You've got a big database (or any other) file that you want to backup, but it's far too big to fit onto a single diskette. With EZ-Split, you can split the file to diskette and protect your data!
- You want to send a file to someone via Internet e-mail. Maybe the file is 5 megabytes (MB) in size. Your e-mail server might only accept messages that are less than 64 kilobytes (k). Or, maybe it's the recipient's e-mail server that has the message size restriction. With EZ-Split, you could split the file up into chunks of any size (1k per piece, 32k per piece, etc.), then e-mail the pieces.
- You want to send a 5 MB file to someone via Internet e-mail. You access the Internet from a dial-up connection that's not always 100% stable. What happens if you're sending the message, and you get disconnected? Time to retransmit that 5 MB message! Using EZ-Split, you could split the file up into manageable pieces (maybe 64k), and send them out one at a time. That way, if you're disconnected you've only lost 64k, not 5MB!

EZ-Split is very easy to use and has many options for customizing it's appearance & functionality. Give it a try, use EZ-Split to make it fit!

[Table Of Contents](#)

# Registration Information

EZ-Split is shareware. This means that if you continue to use this program for more than 30 days, you are required to pay for it. Following are a few good reasons to register EZ-Split:

- 1 Registration gets rid of the nag screens!
- 2 Registered users are entitled unlimited technical support and discount prices on future versions of this program.
- 3 It gives the author (me) reason to develop future versions of this program, and to develop more quality shareware programs.
- 4 It gives you another cool program to add to your collection.
- 5 It gives you a warm fuzzy feeling to be supporting the shareware concept.

## How To Register

The cost of registering EZ-Split is only \$20. EZ-Split can be registered in either of the following ways:

- 1 You can order with MasterCard, Visa, Amex, or Discover from Public Software Library by calling 800-242-4775 or 713-524-6394.

Orders can be faxed to 713-524-6398.

Orders can be e-mailed to 71355,470@compuserve.com.

Orders can be placed at PSL's web site. Point your browser to:

[https://www.pslweb.com/cgi-win/psl\\_ordr.exe/item14484](https://www.pslweb.com/cgi-win/psl_ordr.exe/item14484)

Orders can be mailed to:

Public Software Library  
P.O. Box 35705,  
Houston, TX 77235-5705

Any questions about the status of the shipment of the order, refunds, registration options, product details, technical support, volume discounts, dealer pricing, site licenses, etc, must be directed to me (see Technical Support section for my contact details).

To insure that you get the latest version, PsL will notify me the day of your order and I will ship the product directly to you. Pricing for credit card orders is \$25.00. Sorry for the slightly higher price, but I have to pay PsL for credit card services! EZ-Split's product number is 14484 (reference this number when ordering!).

- 2 You can register EZ-Split online through Compuserve's Shareware Registration Forum (GO SWREG). EZ-Split's registration ID is 4603.
- 3 You can mail in your order and pay by check or money order. US checks or money orders must be drawn on a US bank. To register, select 'Fill Out Registration Form' from EZ-Split's Help menu. Print it and send it with your registration fee to:

James Sanders  
NCTS PSC 802 Box 44

FPO AE 09499-1200  
USA  
(Yes this is REALLY a valid USA address)

EZ-Split will be sent in 3.5" HD format via floppy diskette mailer.

**Miscellaneous Information**

- You may install EZ-Split on as many PC's as you like, provided you are the only one using them. So if you have a home PC, office PC & laptop you only need to purchase one license.
- The registered version may NOT be distributed.

## Technical Support

If, by chance you have problems using EZ-Split, please feel free to contact me! I can be reached by:

Internet Mail: [sandersj@enterprise.net](mailto:sandersj@enterprise.net)

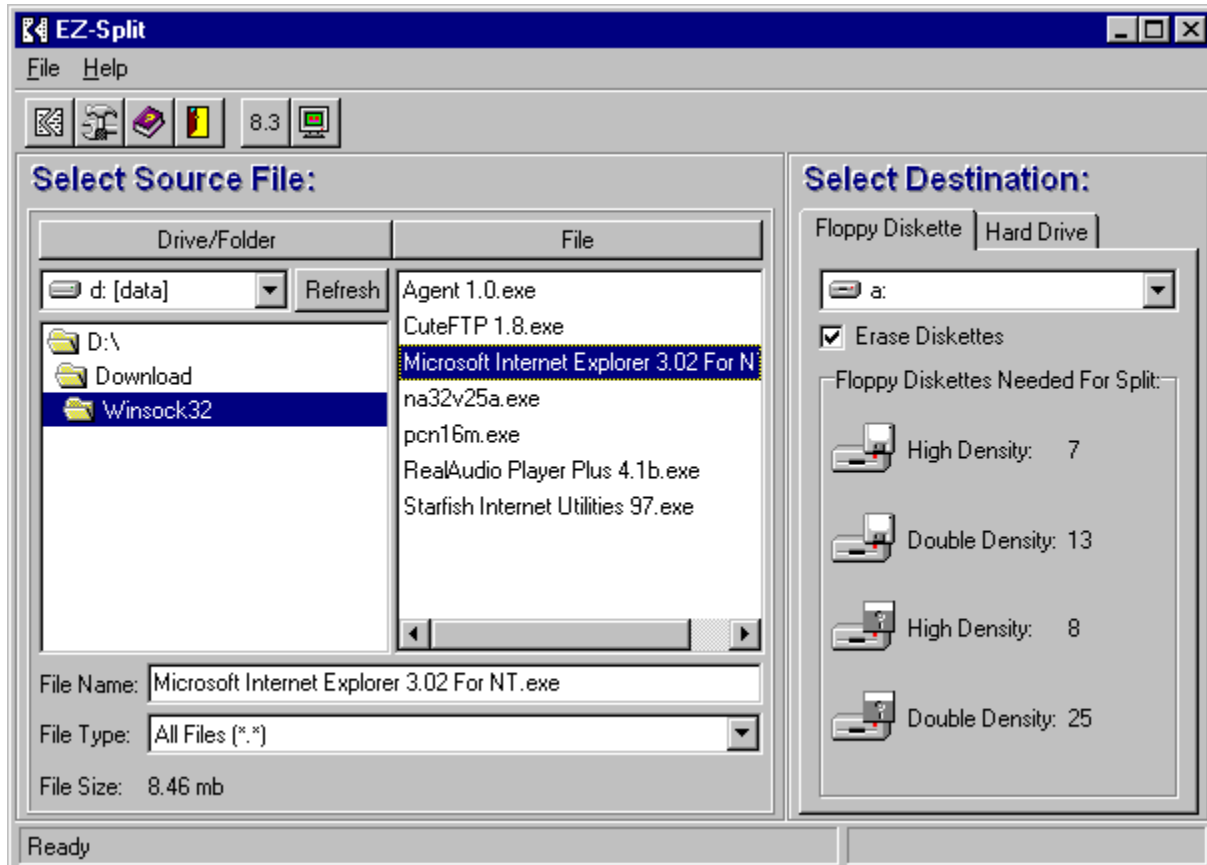
Compuserve Mail: 74640,3352

WWW: <http://www.sanderssw.com>

Any comments or suggestions about EZ-Split would be greatly appreciated.

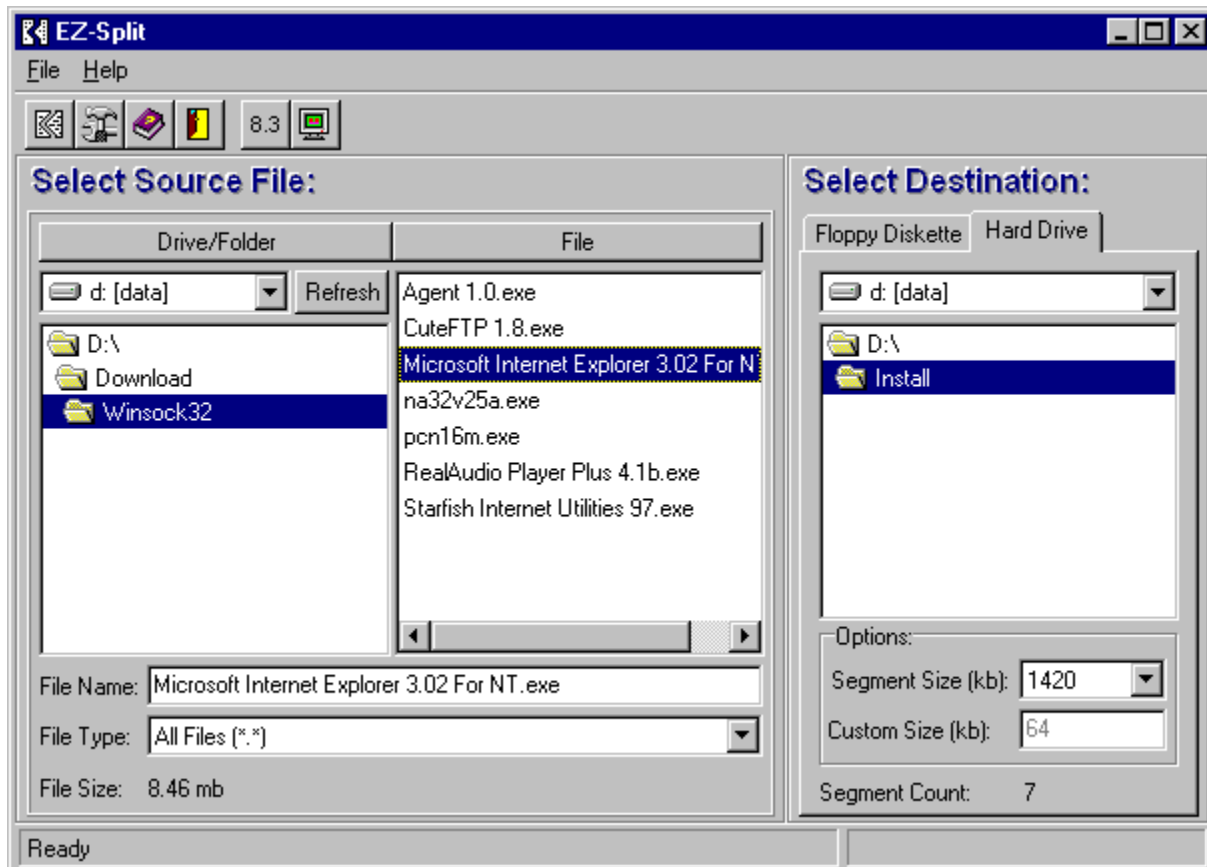
# Splitting Files To Floppy Diskette

A snapshot of the window is displayed below. To receive help on a particular area, click on it with the mouse.



# Splitting Files To A Hard Drive

A snapshot of the window is displayed below. To receive help on a particular area, click on it with the mouse.



# Different Ways To Start EZ-Split

## **Drag And Drop**

Files can be dragged from the File Manager or Explorer and dropped onto the EZ-Split icon. EZ-Split will start with the dropped file selected for splitting.

If EZ-Split is already running, you can drop a file onto the EZ-Split window to select it for splitting.

## ***Explorer Context Menu***

From the Windows Explorer, select an EXE or ZIP file and click the right mouse button. Select "Split" and EZ-Split will start with the specified file selected for splitting.

## ***Using Run Command From Start Menu***

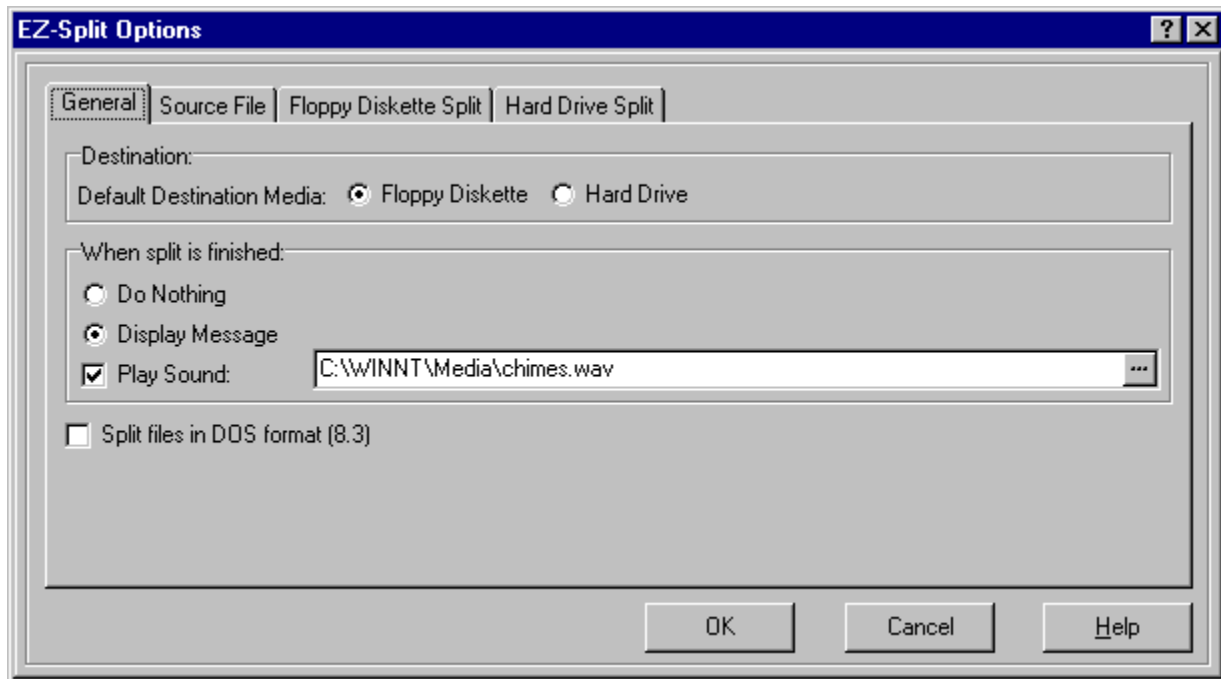
Adding a file name to the command line will automatically start up EZ-Split with the specified file selected for splitting.

Example: "C:\WINDOWS\EZSPLIT\EZSPLIT.EXE [SPACE]  
C:\DOWNLOAD\MSIE302.EXE" [RETURN]



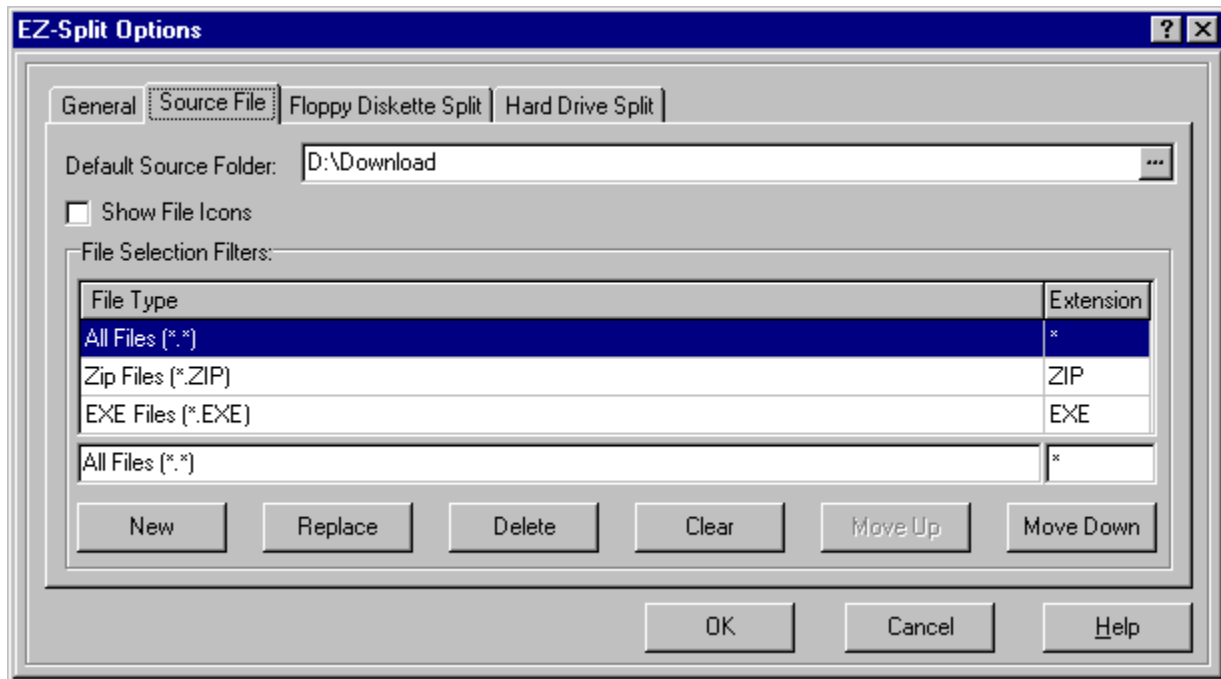
## Options (General)

A snapshot of the window is displayed below. To receive help on a particular area of the window, click on it with the mouse.



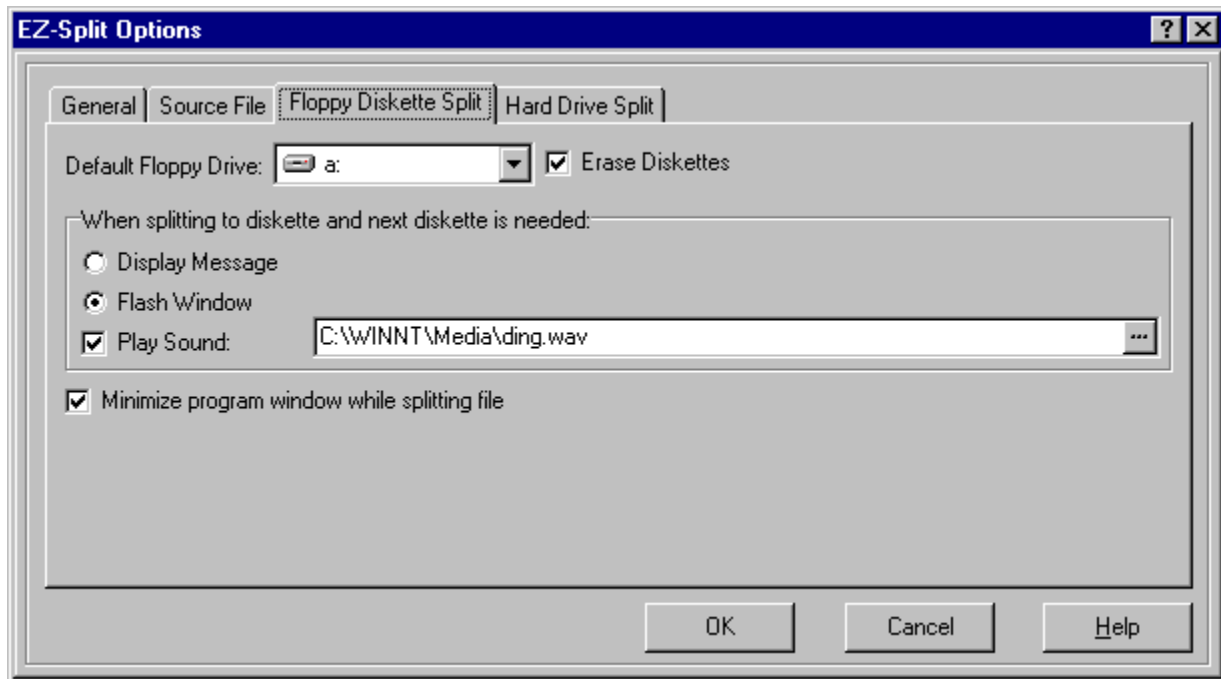
## Options (Source File)

A snapshot of the window is displayed below. To receive help on a particular area of the window, click on it with the mouse.



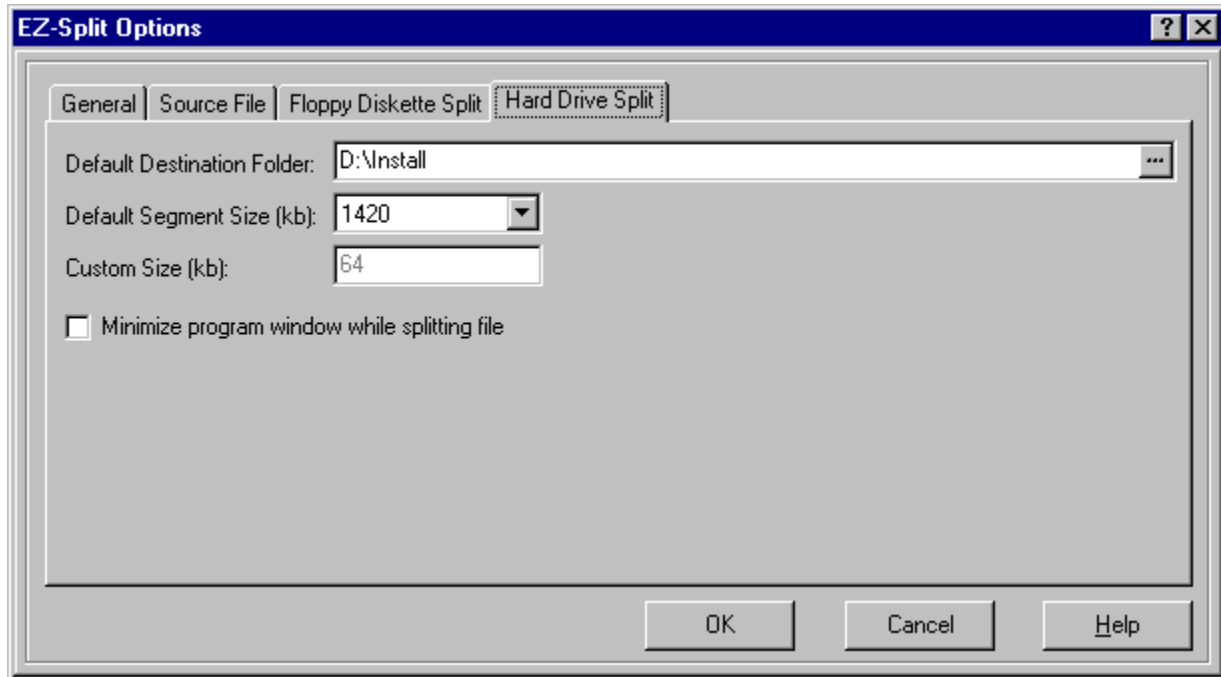
## Options (Floppy Diskette Split)

A snapshot of the window is displayed below. To receive help on a particular area of the window, click on it with the mouse.



## Options (Hard Drive Split)

A snapshot of the window is displayed below. To receive help on a particular area of the window, click on it with the mouse.



# Menu Commands

To select a top level menu item, either left-click on it with the mouse, or hold down the [ALT] key and press the underlined letter of the desired menu item. This will display a drop down list of available commands. Either left-click on the desired command or use the cursor keys to select a command and press [ENTER].

## ***FILE Menu Commands***

<u>S</u> plit	
<u>O</u> ptions	Ctrl+O
DOS Split (8.3)	
Show <u>I</u> cons	
<u>E</u> xit	

## ***HELP Menu Commands***

<u>H</u> elp Topics	
How To Register	
Complete <u>R</u> egistration/Upgrade Form	
Register Now	
<u>A</u> bout	Ctrl+A

Use this drop down to select a destination floppy drive for split files.

Check this box to have floppy diskettes erased before split files are copied to them.

Use this information to determine how many floppy diskettes you'll need to split a selected file.



Enter a size (based on kilobytes) that you want each piece of the split file to be. You must first select 'Custom' from the 'Segment Size' drop down above.

Use this drop down to select a destination hard drive for split files.

Select a destination folder for split files from the list.

This shows how many pieces the split file will be made into based on the selected segment size.

Use the drop down to select a segment size. This size is kilobyte (1024 bytes) based. If the size you want isn't displayed in the drop down, select 'Custom' and enter a size value into the 'Custom Size' area.

This menu item tells EZ-Split what type of split file to create. If enabled (checked), split files will be created using the DOS file name format. If this menu item is disabled (unchecked), EZ-Split will create long file name splits.

EXAMPLE: If a file named 'Customer Database.dbf' was split, the resulting files would be named:

- With DOS SPLIT enabled: 'custom~1.ezs', 'custom~1.001', etc.
- With DOS SPLIT disabled: 'Customer Database.ezs', 'Customer Database.001', etc.

Select to exit EZ-Split.

Select this menu item to change the way EZ-Split looks and operates.



This menu item is a toggle. Turn it on (checked) to see individual file icons displayed in the file list. Turn it off (unchecked) to just display the filenames. Displaying just the file names improves performance.

Once a file has been selected for splitting, select this command to begin the split. If a file hasn't been selected for splitting, this menu item will be disabled (as shown on the graphic).

Select to view program version information, contact details, etc.

Select to complete and print a registration (order) form for EZ-Split.

Select to view on-line help discussing EZ-Split registration options.

Select to register this copy of EZ-Split. You must have a valid registration code to register.

Select to display EZ-Split's on-line help, opened to the Table of Contents.

Discard any changes made to EZ-Split's options and close the window.



Select the default destination drive for split files.

Erase diskettes before putting data on them. This option can also be turned on/off from the main program window.

If enabled (checked) EZ-Split will minimize to an icon while splitting the file.

When another diskette is needed, the EZ-Split window will flash. If the program window is minimized, the icon will flash. The window or icon will remain flashing until you activate the EZ-Split window. If EZ-Split is already the active window, no flashing will occur.

When another diskette is needed, display a message.

When another diskette is needed, play a sound. If this check box is unchecked, no sound will be played. The sound file to be played is specified in the text box to the right.

When another diskette is needed, the sound file specified here will be played if the "Play Sound" check box has been checked. To browse for a sound file, click the "..." button.

Select what the default destination media is. Select "Floppy Diskette" if you will normally be splitting files to diskette. Select "Hard Drive" if you'll normally be splitting files to a hard drive.



When a file split finishes, display a message.

When a file split finishes, provide no notification.

When a file split finishes, play a sound. If this check box is unchecked, no sound will be played.  
The sound file to be played is specified in the text box to the right.

When a file split finishes, the sound file specified here will be played if the "Play Sound" check box has been checked. To browse for a sound file, click the "... " button.

Select this option to have split files created in DOS 8.3 file name format by default. You can still change the split type from the main window.

Enter a size (based on kilobytes) that you want each piece of the split file to be. You must first select 'Custom' from the 'Segment Size' drop down above.

Select the default drive and folder for hard drive split files. Use the "... " button to browse for a folder.

If enabled (checked) EZ-Split will minimize to an icon while splitting the file.



Use the drop down to select a default segment size. This size is kilobyte (1024 bytes) based. If the size you want isn't displayed in the drop down, select 'Custom' and enter a size value into the 'Custom Size' area.

Display on-line help for the current options page.

Save your options and close the window.

Select the default drive and folder that EZ-Split will display when the program is started. Use the "... " button to browse for a folder.

File extension for this file filter. Only the extension can be entered.

For example, entering "\*" means all files. Entering "EXE" means all files with a .EXE extension.

Removes all filters from the filter list. If all filters are cleared and none added, EZ-Split will add an "All Files (\*.\*)" filter.

Deletes the currently selected filter. If no filter has been selected from the filter list, the button will be disabled (greyed out).

This list shows all configured file filters. File filters are used to limit the files displayed in EZ-Split's file selection list. To work with a filter, select it from the list.



Moves the selected filter down one line in the filter list. If the selected filter is the last filter, this button will be disabled (greyed out).

Moves the selected filter up one line in the filter list. If the selected filter is the top filter, this button will be disabled (greyed out).

Allows a new filter to be entered.

Replaces the currently selected filter with the modified filter. If adding a new filter, takes the information provided and adds the filter to the filter list.

Descriptive name of the filter.

Show file icons in the file selection list by default. This can be toggled on/off from the main program window.

When a file is actively being split, completion status will be displayed here.

## Select Destination

☐ Floppy Drive

☐ Hard Drive



Use the drive drop down to select which drive to browse. Floppy drives are not listed.

If a file has been selected, it's filename will be displayed here.

Use the file list to select a file for splitting.

If a file has been selected (clicked on) in the file list, it's size will be displayed here.

Use this drop down to filter what types of files are displayed in the file list.

Use the folder list to select a folder for browsing.

The drive/folder and filename displays can be resized by dragging the divider.

Click this button to refresh the directory and file lists.



This part of the status bar will display menu and toolbar tips.  
Various program operations will also be displayed here.

## 8.3 Button

This button tells EZ-Split what type of split file to create. If enabled (pushed in), split files will be created using the DOS file name format. If this menu item is disabled EZ-Split will create long file name splits.

EXAMPLE: If a file named 'Customer Database.dbf' was split, the resulting files would be named:

- With 8.3 button pushed in: 'custom~1.ezs', 'custom~1.001', etc.
- With 8.3 button not pushed in: 'Customer Database.ezs', 'Customer Database.001', etc.

## Exit Button

Select to exit EZ-Split.

## Help Button

Click this button to display EZ-Split's on-line help, opened to the Table of Contents.

## Options Button

Click this button to change the way EZ-Split looks and operates.

## Show Icons

This button is a toggle. Turn it on (pushed in) to see individual file icons displayed in the file list. Turn it off to just display the filenames. Displaying just the file names improves performance.

## Split Button

Once a file has been selected for splitting, click this button to begin the split. If a file hasn't been selected for splitting, this button will be disabled (greyed out).

# Toolbar Buttons

Click on the toolbar buttons to view button descriptions.







