

# ***SnapIt Online Reference***

---

Last Update : 1997/02/08

[q Welcome to SnapIt](#)

[q Install & Uninstall](#)

[q About SnapIt](#)

[q Registration](#)

[q Option Settings](#)

[q Environment](#)

[q Specification & Limitation](#)

[q Copyright](#)

[q Update Log](#)

---

***SnapIt - Copyright © 1996-1997 by Kaoru Nakajima***

# About SnapIt

---

## n Snap to Grid [ď](#)

SnapIt automatically places icons (on the desktop or in the folder) in either even-spaced grid-pattern or other simple patterns.

## n Save/Restore Desktop Icon Layout [ď](#)

SnapIt saves icon layouts of your choice, protects them from screen resolution changes and unexpected system problems that normally wipe out every move you made since the last shut down

## n Icon Property Sheet [ď](#)

SnapIt features an Icon Property Sheet which allows you to designate and change the attributes (size, etc...) of desktop icons at once.

## n Folder SmartResize [ď](#)

SmartResize function automatically adjusts the folder window size to properly accommodate its contents.

## n Folder Color Settings [ď](#)

SnapIt lets you choose folder colors other than those preset by the system.

## n Other topics [ď](#)

---

## Č Contents - -úžŸ

## Other Topics

---

- SnapIt works in the background. It doesn't create any extra windows and works seamlessly with your Windows 95 shell
- SnapIt is designed to hook only onto the Windows 95 shell - You never have to worry about other applications being affected.
- By right-clicking a SizeBox, SnapIt pop-up simple property menu for change icon view mode & sorting. (This function related to [SmartResize](#) function)
- By double-clicking a blank space of any folder, You can open the parent folder with Push-Up function.
- You can save the Desktop layout from the last session for each screen resolution. SnapIt frees you from repositioning the icons back to your taste
- Each screen resolution can be paired automatically with its own customized icon layout that best accommodates the selected screen resolution.
- Each function can be set On/Off individually

---

### Ç Contents - -ÚŽŸ

# ***Snap to Grid***

---



SnapIt automatically places icons on the desktop or in the folder.

SnapIt lets you decide whether to snap the desktop and/or each folder. It also lets you designate how the icons are snapped. Please note that **snap-to-grid function will not work** when the Windows 95 [Auto-Arrange] option is checked

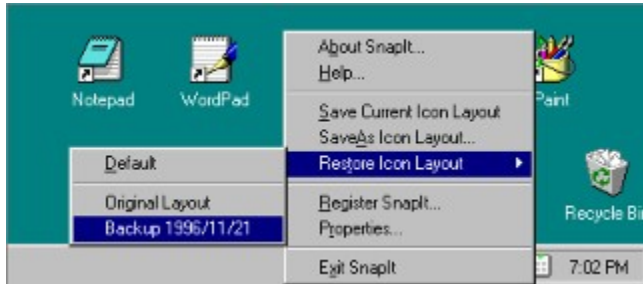
---

## **Ç About SnapIt**

### **1 Options - Snap to Grid**

# Save/Restore Desktop Icon Layout

---



SnapIt can prevent your carefully positioned icon layouts to be lost whenever you change the screen resolution. Even if unexpected accidents such as GPFs, crashes occur, your Desktop/windows layouts will stay intact

Save & restore your desktop icon positions.

Icon layouts are saved each time **Windows is shut down**, or when you choose to do so, and can be automatically restored when SnapIt is activated, or **when the screen resolution is changed**. There is also an option to switch the Automatic Icon Layout Save/Restore Function on and off.

Even though each layout relates to a specific screen resolution, there is not (yet) an auto-save function that reacts to actual screen resolution changes. Therefore, **I suggest that you save each layout, once you are satisfied with it, before you change the screen resolution.**

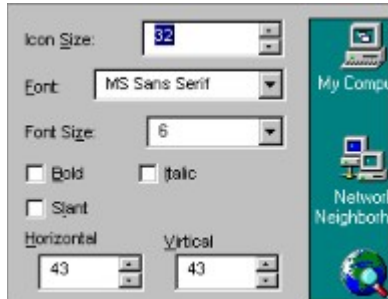
---

## Ç About SnapIt

### 1 Options - Icon Settings

# Icon Property Sheet

---



SnapIt features an Icon Property Sheet which allows you to designate and change the attributes of desktop icons at once.

Setting up the icon properties affects not only the desktop and folders but also any ListView in the entire Windows, and it could change the list views in other applications too. I suggest not to make any extreme settings

---

## Ç About SnapIt

### 1 Options - Icon Settings

## Folder SmartResize

---



SmartResize function automatically adjusts the folder window size to properly accommodate its contents.

By double-clicking either the [Size Box] located on the lower right-hand corner on your folder window or the lower right portion of the window frame, SnapIt will adjust the window size to fit all your icons.

Also by choosing the optional AutoSmartResize, you can automatically activate the SmartResize function the moment you open the folder. Additionally, by double-clicking the size box while pressing the shift key, you can arrange all icons in the folder.

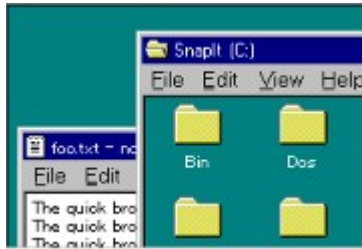
---

### **Ç About SnapIt**

#### **1 Options - Folder Settings**

# ***Foloder Color Settings***

---



SnapIt lets you choose folder colors other than those preset by the system. Because this set up does not affect the color setting of other applications, it allows you to freely change the folder's color.

---

## **C About SnapIt**

### **1 Options - Folder Settings**

## ***Install & Uninstall***

---

You can copy / execute SnapIt.exe directly with SnapCtrl.dll and SnapIt.hlp.  
Although SnapIt provide a install information file for easy installation.

To Install:

1. Extract all archived files into any folder.
2. Right-Click **SnapIt.inf** file and select [Install] item from popup menu.

To Uninstall:

1. Open [Control Panel] from start menu.
2. Double click [Add/Remove Application] Icon.
3. Select [SnapIt Uninstall] item from application list.
4. Press Add/Remove button.
5. Remove SnapIt Icon from [StartUp] folder.

---

## **Ç Contents - –ÚŽŸ**

# Welcome to SnapIt !

---

SnapIt is perfect for those of you Windows 95 users who :

- always have a **bunch of icons** just sitting around randomly on the desktop
- are constantly realigning icons by using the **[Line-Up-Icons]** menu to keep the desktop looking neat
- get frustrated every time the Recycle Bin is displaced from its original spot when changing **screen resolutions**
- often go crazy because you always end up closing the folder instead of maximizing it (especially ex-Macintosh users)

## SNAPIT'S MAIN FUNCTIONS

### Snap-To-Grid Function -

As you can probably tell from its name, SnapIt [\[snaps-to-grid\]](#) all icons (whether they are in the folder or on the desktop) to keep them in a neat, grid-pattern. With SnapIt, you don't need to bother yourself with **Line-Up-Icons menu anymore !**

### Automatic Icon Layout Save/Restore Function -

By [automatically saving](#) your **favorite icon layout for each screen resolution**, and **restoring it when a new screen resolution is selected**, SnapIt always lets you work with the visually most comfortable desktop environment. Your icon layout is never affected even if an application freezes or a General Protection Fault occurs with Windows Explorer, and icons get resorted because SnapIt saves the layout automatically every time Windows is shut down.

### SmartResize Function -

By double-clicking the size box located on the lower right-hand corner on your folder window ()

**E**This!), you can utilize [SmartResize](#) function which **automatically adjusts the window size to fit all the icons**.

### Icon Property Sheet -

As an extra function, I have included an [\[Icon Property Sheet\]](#) which allows you to designate the attributes of icons that are used with Windows. Although this can normally be done by using the Screen Properties function found in the Control Panels, you are, with Icon Property Sheet, able to change the setup all at once while looking at the samples.

For more details on SnapIt main functions, please refer to [\[About SnapIt\]](#)  
(see the contents page).

REMINDER : SnapIt is a [shareware](#). Although no limitations or special messages regarding its usages are mentioned here, I would like to ask you to send the [payment](#) to my attention if you find the program useful after trying it out on your own.

*Thanks,*  
*[Kaoru Nakajima](#), 1996/12/08*

---

**& Contents**  
**& About SnapIt**  
**& Registration**  
**& Copyright**

kaorun@pa.aix.or.jp

Because English is not my first language, please be advised that my answers to your questions may not be always 100% clear and understandable to you. Also, you may not receive the response from me right away since it takes time for me to answer your question in English.

## ***Option Settings***

---

***1 Snap to Grid***

***1 Icon Settings***

***1 Folder Settings***

---

***Ç Contents***

# ***Snap to Grid Options***

---

## **Desktop Snap:**

Select desktop grid-pattern.

### **None:**

Disable snap to grid function.

### **Normal:**

Icons in even-spaced grid-pattern as **Windows default**.

### **Horizontal Shift:**

Icons in horizontal-shifted grid-pattern.

### **Vertical Shift:**

Icons in vertical-shifted grid-pattern.

## **Folder Snap:**

Select folder grid-pattern.

## **Desktop Align position:**

Select desktop icon align position for new & sorted desktop icons. You can choice LEFT / RIGHT / TOP / BOTTOM\_LEFT / BOTTOM\_RIGHT corner on the screen .

**This function does not work with [Auto Sort] function.**

---

## **C Option Settings**

### **1 Icon Settings**

### **1 Folder Settings**

Select desktop grid-pattern.

Disable snap to grid function.

Icons in even-spaced grid-pattern as Windows default.

Icons in horizontal-shifted grid-pattern.

Icons in vertical-shifted grid-pattern.

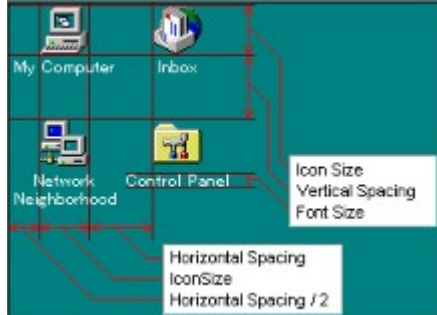
Select folder grid-pattern.

Select desktop icon align position for new & sorted desktop icons. You can choice LEFT / RIGHT / TOP / BOTTOM\_LEFT / BOTTOM\_RIGHT corner on the screen .

# IconSettings

---

Icon Property Sheet which allows you to designate and change the attributes of desktop icons at once.



Icon Size:

Select desktop (and other) icon size per pixel.

Font:

Font Size:

Select icon title font.

Bold: Italic: Slant:

Apply the properties to icon title font.

The [Slant] property **effect to broad range**. I don't suggest using this property at more than playing...

Horizontal Spacing:

Vertical Spacing:

Settings of the icon spacing.

Icon Layout:

Settings of the layout save timings.

---

## C Option Settings

1 Snap to Grid

1 Folder Settings

Select desktop (and other) icon size per pixel.

Select icon title font face.

Select icon title font size.

Icon title font with Bold property.

Icon title font with Italic property

Slant the icon titles 10 degree.

The [Slant] property **effect to broad range**. I don't suggest using this property at more than playing...

Settings of the icon spacing.

Settings of the icon spacing.

Settings of the layout save timings.

SnapIt save icon layout at Windows Exit.

SnapIt automatic load icon layout at resolution change.

# Folder Settings

---

## SmartResize by Double click SizeBox:

To enable manual SmartResize.

## Auto SmartResize:

You can automatically activate the SmartResize function the moment you open the folder.

## Don't shrink folder at AutoSmartResize:

To disable shrink effect on AutoSmartResize.

## Sort Icons when double-click with SHIFT:

By double-clicking the size box while pressing the shift key, you can arrange all icons in the folder.

## Open Parent Folder by Double Click Folder Blank Space:

By double-clicking a blank space of any folder, You can open the parent folder.

## Change the Folder Color:

To enable SnapIt [Folder Color] function.

SnapIt lets you choose folder colors other than those preset by the system.

Because this set up does not affect the color setting of other applications, it allows you to freely change the folder's color.

## Icon Text:

Settings of icon title text foreground color.

## Text Background:

Settings of icon title text background color.

## Window Color:

Settings of folder window background color.

---

## Ç Option Settings

### 1 Snap to Grid

### 1 Icon Settings

To enable manual SmartResize.

You can automatically activate the SmartResize function the moment you open the folder.

To disable shrink effect on AutoSmartResize.

By double-clicking the size box while pressing the shift key, you can arrange all icons in the folder.

By double-clicking a blank space of any folder, You can open the parent folder.

To enable SnapIt [Folder Color] function.

SnapIt lets you choose folder colors other than those preset by the system.

Because this set up does not affect the color setting of other applications, it allows you to freely change the folder's color.

Settings of icon title text foreground color.

Settings of icon title text background color.

Settings of folder window background color

## ***Specification & Limitation***

---

To utilize the Snap-To-Grid function, make sure to turn off [Auto-Arrange] function - icons can not be snapped when the [Auto-Arrange] option is checked.

When two icons are snapped to the same spot, SnapIt will place the second icon slightly to the side of the first one.

Even though each layout relates to a specific screen resolution, there is not (yet) an auto-save function that reacts to actual screen resolution changes. Therefore, I suggest that you save each layout, once you are satisfied with it, before you change the screen resolution.

SnapIt does not effect to the [Explorer] view window. When the folder display this mode, Icons does not Snap-to-Grid and no reacts other SnapIt functions too.

I confirmed the main features work fine with Windows NT 4.0. But following functions has a problem on current version. Because some API & messaging has difference from 95. SnapIt will be the functions disabled.

ý Folder Color Settings

---

## **Ç Contents**

# Update Log

---

## Version 1.11

1997/02/08

- ý Add Right-Click menu at SnapIt tray-icon.
- ý Fixed icon sorting problem at folder opening again.
- ý Fixed [SmartResize](#) problem when icon mode doesn't set as Large-Icon.
- ý Fixed snap-to-grid problem when folder scrolled.
- ý Update [RegNet](#) URL on help-file.

## Version 1.10

1997/01/02

- ý Recovered [Auto-SmartResize](#) function. This function destroyed by Push-Up function at 1.09.
- ý Fixed icon sorting problem at folder opening.
- ý Fixed loose [SmartResize](#) problem with ScrollBar.
- new!** Add simple property menu with Right-Click SizeBox. (This function related to [SmartResize](#))
- new!** Add simple IntelliMouse support. Some dropdown list box on explorer.exe (ex. Folder toolbar MoveFolder-list) work with IntelliMouse wheel. (I don't assurance to support this function on a long-term basis. Because, This function does not followed standard IntelliMouse supporting rules)

## Version 1.09

1996/12/08

- new!** Add Push-Up function. To open parent folder with double-click folder blank space.
- ý Fixed a icon property sheet problem. The properties does not saved at Win95. Because NT supporting code was wrong.
- ý All icon properties support on NT4.0.
- ý Fixed icon align problem on NT4.0 when icon spacing & icon size set as small value.

## Version 1.08

1996/12/02

- ý Add clickable URL on About dialog.
- ý Exclude Windows NT4.0 from main target environment. And disable some functions when running at NT. Because, there is some API/messaging difference from 95.

## Version 1.07

1996/11/21

- new!** Web. [Registration](#) (through [RegNet](#) available!
- ý [Folder color setting](#) does not working at NT4.0. fixed.
- ý Fixed snap position incorrect problem.

## Version 1.06

1996/11/03

- new!** Support Windows NT 4.0.
- ý Some of small bug fix.
- ý Fixed Properties dialog display problem with old COMCTL32.DLL and English Windows

environment.

#### **Version 1.05**

1996/09/14

- ý Fixed grid-pattern problem when icon size changed.
- ý Fixed startup problem. The case of miss hook SnapIt.
- ý Performance tune at folder opening with many icons.

#### **Version 1.04**

1996/08/20

- ý Property-sheet fix again.

#### **Version 1.03**

1996/08/17

- ý Fixed the garbage strings on layout menu when the layout not saved.
- ý Fixed property-sheer shrink problem.
- new!** Add new option [\[Don't shrink folder at AutoSmartResize\]](#).

#### **Version 1.02**

1996/08/10

- ý Move some options at property-sheet. And rebuild [Folder Settings](#) UI.

#### **Version 1.01**

1996/08/09

- ý Fixed Div0 problem.
- new!** Add new option [Folder Color Settings](#).

#### **Version 1.00**

1996/07/16

Original Release

---

## **Ç Contents**

# Registration

---

SnapIt is a shareware. Its registration fee is \$10.00

The registration fee : 1 program per 1 user or 1 computer. However, no extra fee is required if :

- you plan to use the program on more than 2 computers as long as you are the only person using the program, or
- you plan to use the program on 1 computer even if it is co-owned by someone else.

You can register SnapIt through the RegNet Web. registration service.

There is two registration form secure / unsecured version.

**SECURE:**

<https://commerce.mindspring.com/www.swregnet.com/486s.htm>

**UNSECURED:**

<http://www.swregnet.com/486p.htm>

I suggest to use the secure registration form for your privacy.

When registered, Input your ID and your name into [Register SnapIt...] dialog and push Ok button.  
Your registered name could show at [About SnapIt] dialog.

---

## Ç Contents

## ***Environment***

---

SnapIt has been designed to work with Windows95, and is not guaranteed to work with SoftWindows and other environments.

I confirmed the main features work fine with Windows NT 4.0. But following functions has a problem on current version. Because some API & messaging has difference from 95. SnapIt will be the functions disabled.

ý Folder Color Settings

---

## **Ç Contents**

# Copyright

---

This product is shareware.

Although no limitations or special messages regarding SnapIt's usages are mentioned here, I would like to ask you to send the payment to my attention if you find the program to be useful.

Please note the following :

- þ If you plan to use this program for **commercial purposes**, please contact me first.
- þ Although you are free to redistribute/upload (onto BBS, etc.) this program, please make it clear that it is a shareware.
- þ If you are to redistribute this program, please make sure to retain the original archive.
- þ I will not be responsible for any loss and/or inconvenience that incurs upon you as the result of redistribution/recirculation of this program.
- þ I do not assume any responsibility for repairing, upgrading, nor sending out notifications regarding this program. The fee you pay is for the use of this program, **not an user-support fee**.
- þ Product and service names mentioned in this document are the trademarks of the said manufacturers and corporations.

---

Ç Contents

Ç Registration

