



Introduction

PowerBar for Win95/NT4.0



Copyright 1997 [PLEMSOFT](http://www.plemsoft.com) www.plemsoft.com
Thanks for trying PowerBar

[WHAT IS POWERBAR](#)

[VIRTUAL DESKTOPS](#)

[INSTALLATION](#)

[TRAY SUPPORT](#)

[UN-INSTALL](#)

[SCREEN CAPTURE](#) *NEW!*

[FEEDBACK](#)

[SCREEN SAVER](#)

[REGISTRATION](#)

[MAIN MENU](#)

[REGISTRATION FORM](#)

[ITEM SETTINGS](#)

[TIPS](#)

[CLIPBOARD ENHANCER](#) *NEW!*

PLEASE READ

Use this program at your own risk. This program is provided as is, which means that the author can't be held responsible for any damage that this program may cause. If you do not agree with this, you are required to remove the PowerBar archive, and all it's contents, from your machine.

This version of PowerBar is a 30-day evaluation edition. If within the 30-day evaluation period you do not choose to register your version, please remove PowerBar from your system using the instructions in the section of this document titled "[UN-INSTALL INSTRUCTIONS](#)".



PLEMSOFT is a Danish software house specialized on solutions to make your life more easy when using windows95 / NT4.0 , with our PowerBar software you will not only work faster , you are able to navigate and start your applications with a single click!. we hope you enjoy using PowerBar.



Clipboard

PowerBar Clipboard enhancer will capture and remember the last 20 text copy's , and the last 20 bitmap copy's. Each time you make a copy of a bitmap or some text , it will be saved on your harddisk, this means that all your clipboard copyes will be remembered even if you reboot your computer. PowerBar will make a clipboard text history , and a clipboard bitmap history. if you right click powerbar you will see a submenu called 'Clipboard' , when you choice this a popup menu will show with 2 submenus :

Text history.

This menu will popup with the last 20 text copyes you have made , it will show you the first 80 chars of the clipboard text , all special chars are not show but instead it will show a '.'.

When you select one of these text entries , the old original clipboard contents will be restored.

Bitmap history.

This menu will popup with the last 20 bitmap copyes you have made , it will show the bitmaps as small 80x80 pictures , if the bitmaps are smaller then 80x80 it will center them and show them in there real size. This also means that large pictures 1024x768 will not look very nice in the popup menu.

When you select one of these bitmap entries , the old original clipboard contents will be restored.



PowerBar has a very powerful tray support , the tray support are made to make you quickly access the PowerBar main menu , and have quick access to special items.

Here are a list of some of the special items you are able to include in the tray :

1. Dialup-Network
2. Network neighborhood
3. My computer
4. Control panel
5. Recycle bin
6. Inbox
7. All desktop items
8. Internet explorer
9. Netscape
10. And many others.

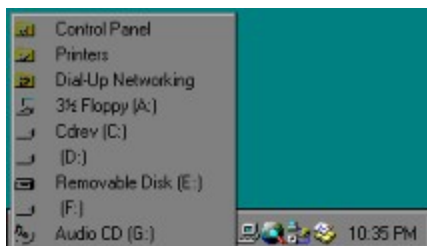
You can include all objects you can place on the desktop directly or as shortcuts.

Its possible to have them on PowerBar and in the tray at the same time.

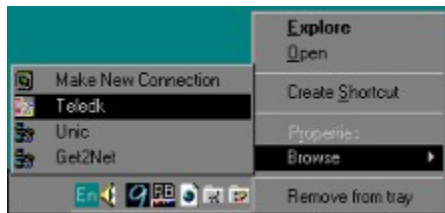
Or save some space in PowerBar and only have them in the tray.



To put a special item in the tray you first need to add the special item to PowerBar , you do this from the setup dialog 'Add special items' , when you have the special item on PowerBar just right click on the icon that you want in the tray , you are now able to choice 'Add to tray' or 'Move to tray' , if you only want the item to be in the tray then choice 'Move to tray' , if you want the item to both be in PowerBar and the tray then choice 'Add to tray'.



When you left click a item in the tray , it will launch the application or if its a object with subitems it will show the browse popup menu or start explorer , you are able to configure this from the setup dialog, (Features2,Folder click).



When you right click a item in the tray , you will get the objects context menu , and the browse submenu (you need to enable the browse menu from the setup dialog) , you also have the option to remove the object from the tray.



WHAT IS POWERBAR

PowerBar is an add-on utility program for WIN95/NT4.0 that allows fast and easy 1 click access to your applications and programs groups, but PowerBar has MANY other features.

Here are some:

1. Instant drive access, 1 click drive access to all your drives Show free disk space with ToolTips.
2. Virtual Desktop's up to 6. switching desktop's are very fast.
3. Screen saver control , functions like instant Disable/Enable , Disable for 1-2-4 hours , screen saver will become active after the time has elapsed.
4. Multimedia player , support CD-ROM - wave files - midi files. Random play , Random switch between CD-ROM and playlist, Load and Save playlist.
5. Drag/Drop support drag your favorite application - multimedia files - documents - programs groups - games , or whatever you want to access fast.
6. When you drop a file/folder on a item on the toolbar the item is executed with the dropped file/folder as parameters, this means that if you have notepad or another text editor , you can drag/drop any file from explorer for editing.
7. Shutdown computer. , Restart computer.
8. Multiply columns , allow you to set single icons as full size and other as small in multiply columns , separators splits columns.
9. Analog Clock , shows the full date and time with ToolTips.
10. Quick resolution change , allows permanent and non permanent changes. No need to reboot in most cases.
11. Real-time memory monitor shows free physical memory , with ToolTips you can see the size off the swapfile and other details.
12. You can customize PowerBars look , set it up to show your own bitmaps in the background , or show a color effect , or just use the default system colors. it can have a bevel in border , bevel out border , or no border.
13. PowerBar can be any size , it will automatic zoom all items to fit the size you prefer , if you resize it PowerBar find's the best looking icon to show.

14. PowerBar can dock to any border of the screen , justifying the desktop viewing area , and fit in just like it was part of the operating system.

15. PowerBar has the new IE look and feel.

16. All PowerBars objects has ToolTips, that shows more details off the object.

17. Shortcut menus on all objects including shell's shortcut menus like properties, eject, autoplay, find, explore, open etc.

18. Add up to 50 items in the registered version. 16 items in the evaluation version.

19. Executing of shell objects , this means that you can startup Control Panel items like Add/Remove program , and other shell objects like this. read tips.txt to find out how to include shell objects.

20. Arrange desktop object , top - bottom - align - hide desktop items.

21. Setup options for all items. Like startup folder, parameters, ToolTips.

22. Autohide etc.

23. And many other minor features.



INSTALLATION

This is only if you received powerbar in a zip file.

There are no installation program in this evaluation edition this is only because of the extra size of the distribution archive. I suppose that this archive will be downloaded. (The disk version do include a setup program.)

- A. Create a new directory for PowerBar, and copy all files contained within this archive to this new directory.
- B. Create a Windows 95/NT 4.0 link from any program group folder to POWERBAR.EXE, located in the directory that you created in step A.
- C. Copy this link to your Startup folder if you would like PowerBar to startup automatically when you boot Windows 95.



UN-INSTALL

- A. Remove the directory where you installed PowerBar in step A of the [installation](#) instructions.
- B. Remove all links to POWERBAR.EXE.



FEEDBACK

You are welcome to contact the authors for suggestions and comments. In fact, if you choose not to use this software or register because you have problems with it, we want to hear about it. Write a letter to one of the following addresses.

homepage:

<http://www.plemsoft.com>

E-mail:

powerbar@plemsoft.com

slow-mail:

PLEM

Holmebaekhuse 18

DK-4681 Herfølge

Denmark



REGISTRATION

PowerBar is SHAREWARE.

read sharewre.txt if you want to know about the concept Shareware.

For online internet registration

<https://www.regnow.com/softsell/nph-softsell.cgi?item=1043-1>

After you make your online registration you will receive the full version in your email.

Online registration \$20.

Cash mail orders

To register PowerBar , Send cash in your own currency (no coins) for a value of US\$20.

When we receive your payment , you will receive the registered version of PowerBar. This version will not have the startup screen and other limits, it includes many new backgrounds, and all functions added since the time of releasing the evaluation version.

NOTE: for check (cheque) orders , you need to add \$5.

If you want to make more then 5 registrations please email us for a offer.

If you send your order with priority mail we have it within 48 hours.

If you have any problems with the payment , or the program , or anything else please read the [FEEDBACK](#) section.

SPECIAL OFFER

If you want to receive the registered version in your EMAIL, you will save US\$5. and receive the registered version even faster. **This offer is only for cash mail orders.**

Sample registrations:

USA registration:

EMAIL: Registration 15,- US\$.

DISK: Registration 25,- US\$.

Germany registration:

EMAIL: Registration 30,- DM.

DISK: Registration 40,- DM.

Danish registration:

EMAIL: Registrering 100 kr. , Den fulde version af PowerBar sendes til din EMAIL address.

DISKETTE: Registrering 150 kr. , Den fulde version af PowerBar sendes paa diskette.

Print and fill out the [registration form](#)

Online Registrations:

<https://www.regnow.com/softsell/nph-softsell.cgi?item=1043-1>



TIPS

Make PowerBar total transparent, if you choose the same background bitmap as the background, and set border's to none. it will look like PowerBar items is sitting on the background. This only works if you have PowerBar located at the top or the left corner.

If you check 'Enable browse menu on all items with sub items' , and right click a drive icon or a folder , you get a browse submenu , where you are able to see the content of the folder.

If you right click a Special item like 'Control Panel' you are able to move or add the icon to the tray.

All items you make on the desktop you are able to add from the 'Add special items' dialog box.

You can add shell objects directly from the setup dialog , if a shell object you want is not there you are able to use it anyway. Create a dummy folder , and create a shortcut to the shell object , you are able to drag the shortcut to the toolbar. From version 1.10 PowerBar is able to launch shell objects.

If you drag a shortcut to PowerBar, and later deletes that shortcut, then PowerBar is not able to find your shortcut and it will not be able to execute the program , before deleting the shortcut , choose 'Resolve Shortcut' in PowerBar this will make the program point to the original and not the shortcut.

If you drag a file to a PowerBar item , it will launch the item with the dropped object as parameters , so you can drag/drop a document/text/multimedia file directly to your applications in PowerBar.

When you have an application running in a virtual desktop , the icon is marked with red.

You can place PowerBar in the title area like you can with the office pro , just go into the setup dialog in PowerBar and choose 'Enable PowerBar to be anywhere' , you are now able to resize , and place PowerBar in the title area.

Do your mouse pointer flash each second , then change to the default windows mouse pointer, or turn the analog clock off.

Disable your screen saver when you are doing large jobs , like defragmenting your harddisk or rendering pictures , there are nothing as annoying as a screen saver swapping memory to disk and forcing the defrag to start over , or a screen saver taking all the CPU cycles when you need them for rendering a picture.

Before doing a large job just right click PowerBar and click 'Disable screen saver', when the job are over just right click PowerBar and click 'Enable screen saver'.

Drag/Drop all your favorite sound files to the Multimedia drop target , and save them in a playlist 'Save current playlist' , you now has instant access to all your favorite sound files , just right click the multimedia drop target.

Left click the multimedia icon to play the next song in the playlist-cdrom.



Virtual Desktop

PowerBars virtual desktop feature, lets you group related programs on a particular desktop and switch to them only when they're needed. This lets you run a greater number of applications without cluttering the taskbar with a large number of unreadable entries.

Virtual desktops also gives you more privacy by letting you quickly switch to another desktop if you are doing something other people should not see.

A virtual desktop is showed as a small icon , the current desktop has the color blue , a desktop with running application have the color red , and empty desktops are cyan.

To switch to a new virtual desktop is as simple as to left click on the desktop you want to activate , you see when you left click a virtual desktop it will switch to that desktop and the color of the icon will switch to blue (current desktop). Try to switch to a desktop and start a application , then switch to another desktop and back again , your application will come back just as you left it. you are now already using virtual desktops. When you get used to using virtual desktops you will find that you are working faster and you are able to organize your applications in a way that make you switch from one application to another faster and more easy.



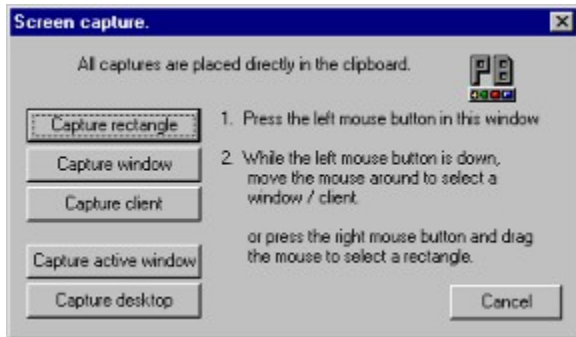
As you see you are able to see what programs are running in the virtual desktop it will popup with a ToolTip. The '[1]' is saying that there are 1 running application , the caption of that application is 'Calculator'.

In the setup dialog you have the option to specify how many virtual desktops you want.



Screen Capture

PowerBar includes a screen capture function , No need to search for a screen capture program when you just need to capture a window a icon or other graphics , its built into PowerBar so its there when you need it.



Screen capture is very useful when you want to include contents from another application in your own documents , you are able to capture whatever is on your screen , this means that you can include a page from a website , or a piece of graphics from the internet , the filelist from explorer, or anything from another application.

When you see what you want to capture on the screen , you just start PowerBar screen capture and choose the best way to capture your image.

You are able to capture the following ways :

Capture rectangle

Used to capture a user defined area directly from the screen.

Capture window

Used to capture all the contents of a application window.

Capture client

Used to capture all the contents of a client area of a application windows , this includes listboxes , buttons , toolbars , graphics windows , or whatever client windows there exist.

Capture active window

Used to capture the currently active window.

Capture desktop

Used to capture the whole contents of the desktop.

When you press the button that best suits you need to capture , a text explaining how to continue the capture will appear on the left side of the buttons.

When you are finish doing the capture , the result will be placed directly in the clipboard , so you are able to directly paste it into your favorite applications , if you like to save the result in a file , you need to start 'Paint' and paste it , then save it.



Screen Saver

PowerBars screen saver support , gives you a quick way to enable and disable your screen saver , and has a option to disable your screen saver for a predefined time , this feature is very valuable.

Disable your screen saver when you are doing large jobs , like defragmenting your harddisk or rendering pictures , there are nothing as annoying as a screen saver swapping memory to disk and forcing the defrag to start over , or a screen saver taking all the CPU cycles when you need them for rendering a picture.

Before doing a large job just right click PowerBar and click 'Disable screen saver', when the job are over just right click PowerBar and click 'Enable screen saver'.

Or just select 'Disable screen saver for 1 hour' 2 or 4 , depending on the time your job is going to take , this will disable your screen saver immediately and automatic enable it after the time has elapsed.

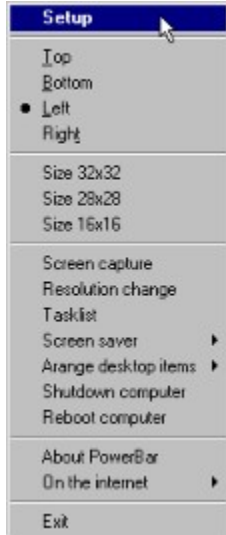


You also has the option to launch your screen saver, if you want security enable the screen saver password feature , now when you go for coffee at work launch your screen saver to protect your computer from other people , normally you will have it set to 5 / 10 minutes before it starts (many things could happen in 10 minutes). It really only take a few seconds to se what you are doing , and writing , or sending the contents of your document folder over the network.



Main menu

PowerBar main menu.



Setup : To start the configuration dialog.

Top,Bottom,Left,Right : Enable you to position PowerBar on the selected side of the screen.

Size 32x32,28x28,16x16 : Set the icons size toolbar size the fit the selected icon size.

Screen capture : Start the screen capture dialog.

Resolution change : Start the resolution change dialog.

Tasklist : Start the tasklist dialog.

Screen saver : Popup menu with screen saver options.

Arrange desktop items : Popup menu , Arrange your desktop items at the top or bottom , or hide your desktop icons.

Shutdown computer : Will start to shutdown your computer.

Reboot computer : Will start to reboot your computer.

About PowerBar : About the program , and author/registration information.

On the internet : Popup menu , write mail to PLEM , or visit our homepage.

Exit : Close PowerBar.



Item settings

In the items settings dialog , you have the options to setup how a program/folder should start. On the top of the window the full path to the application/folder is shown.

Startup directory.

Specify the startup directory for the application , when the application is started this will be the default directory for that application.

Parameters.

If a application needs additional parameters this is where you specify them.

Tooltips.

This is the text that is showed when you place the mouse above the icon , before clicking it.

