

Welcome to GEX online Help

For information about a particular topic, click a button on the remote control and this screen will display information.

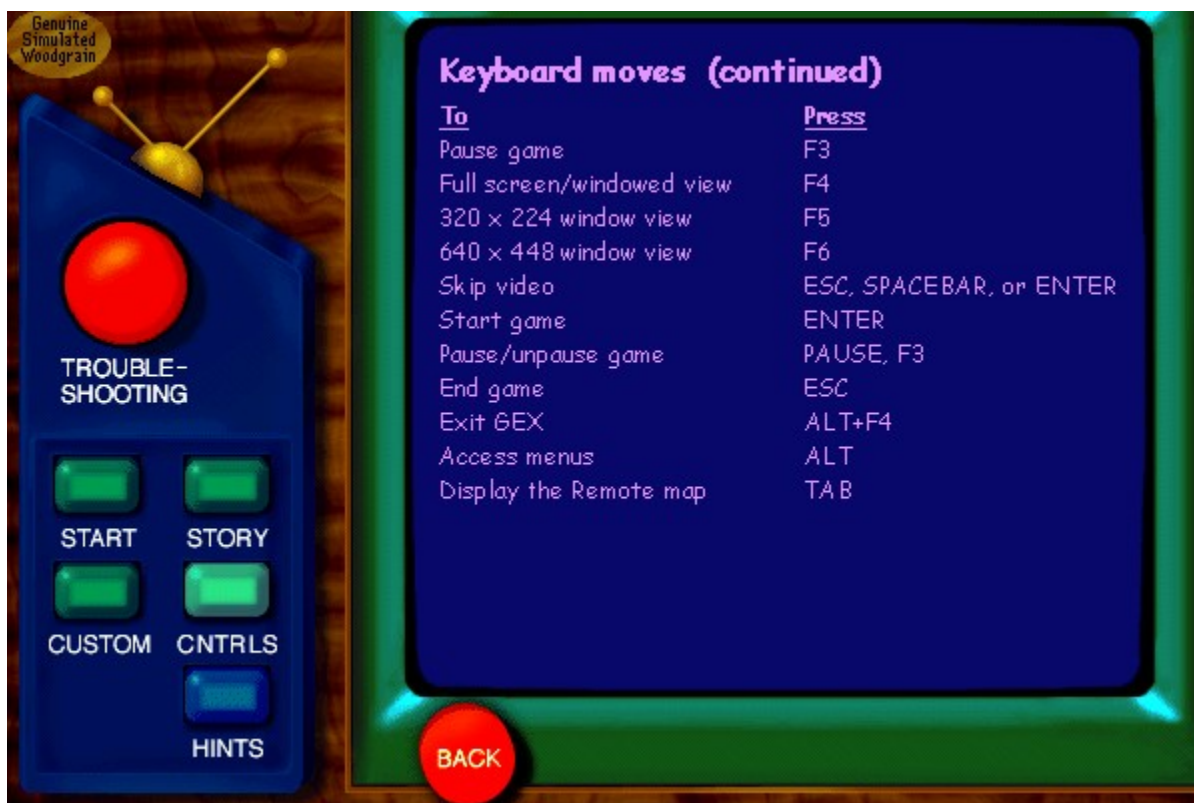


Soon you will become so well informed that your own mother won't recognize you. Maybe we've hidden cool stuff in online Help. Maybe not. I'm not telling.

Gex online Help is cleaner, brighter, and sanitarilly wrapped for your protection.









Joystick moves

You can change these default controls in the Settings dialog box.

| <u>To</u> | <u>Use</u> |
|--|-------------------|
| Move right/left, Squat, and Look up | Joystick movement |
| Tongue lash/Hurl | Button 1 |
| Jump | Button 2 |
| Tail whip | Button 3 |
| Run | Button 4 |

Note The throttle and hat switch are not used in GEX.









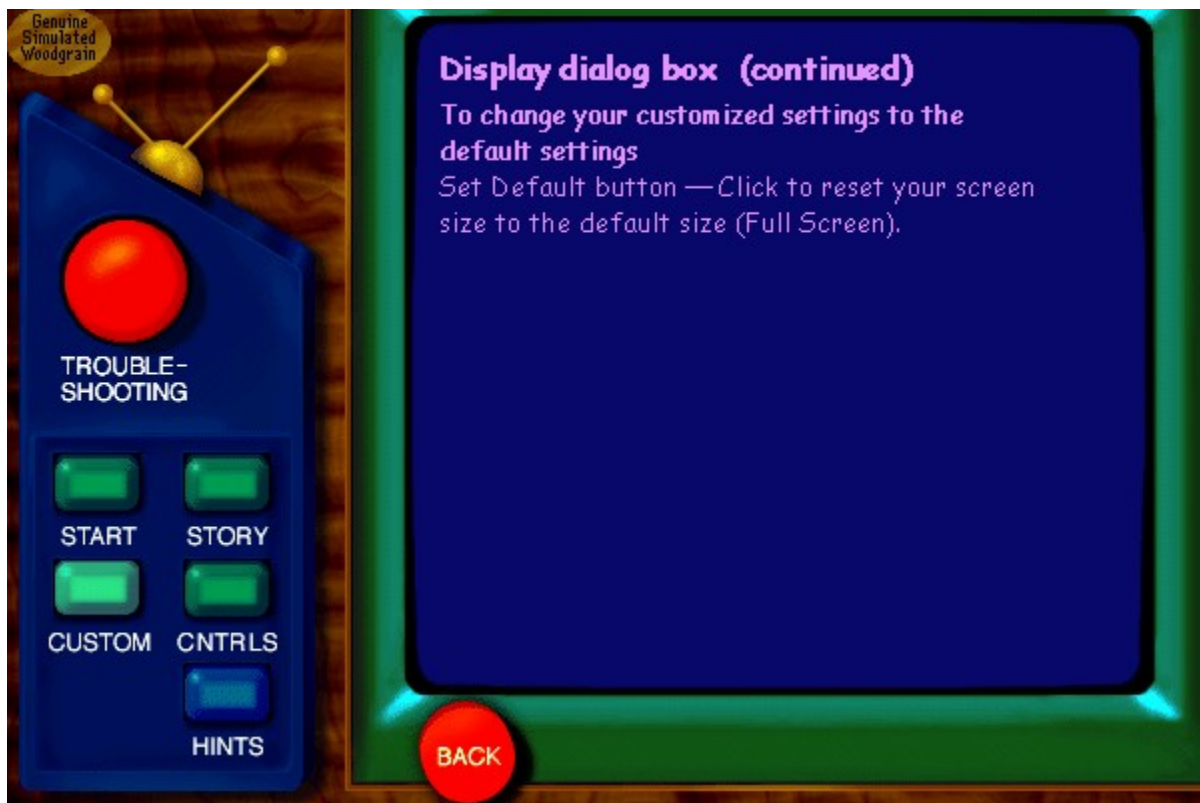
Display dialog box

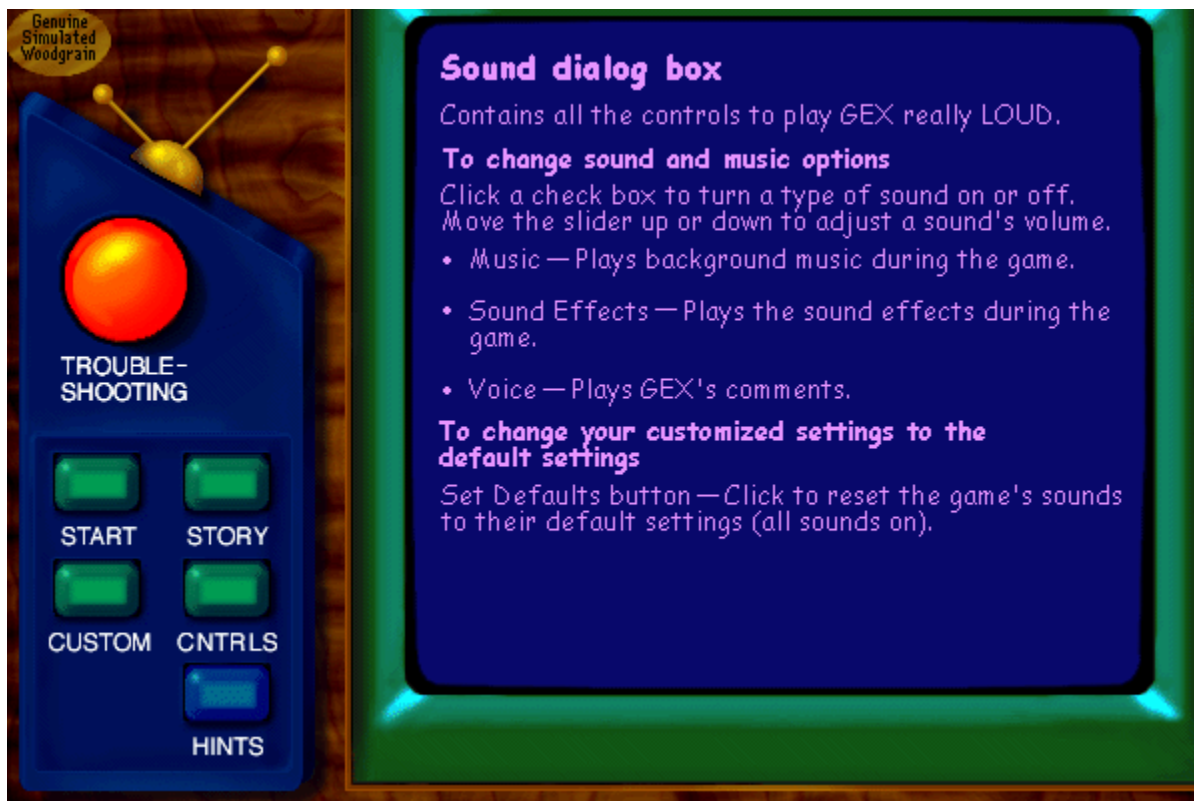
Contains all the controls to keep GEX looking good.

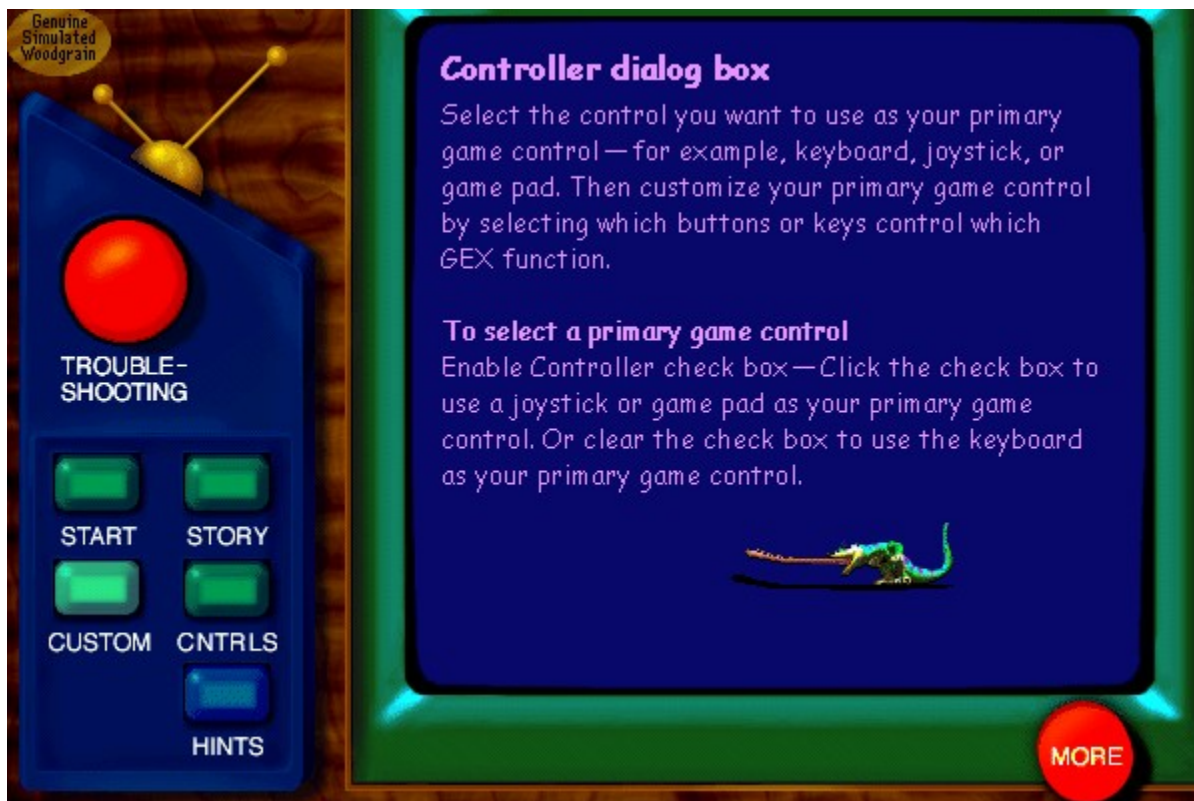
Click one of the display options to change your GEX window.

- 320 × 224: Centered—Displays the game in a screen 320 × 224 pixels in size—the perfect size for playing GEX at work.
- 640 × 480: Centered—Displays the game in a screen 640 × 480 pixels in size. GEX is up close and personal.
- Full screen—Displays the game all over your screen. Think of it as GEX taking over your computer.
- Current Settings (screen size)—Displays GEX in a screen size you specify. To create a custom screen size drag a corner of the screen to resize the game window.

MORE









Genuine
Simulated
Woodgrain

TROUBLE-
SHOOTING

START

STORY

CUSTOM

CNTRLs

HINTS

Controller dialog box (continued)

To customize your primary game control

Click the text box and then select the key or button you want to use for a specific GEX function.

- Jump/Enter TV — Make GEX leap tall buildings in a single bound or enter a world.
- Tail whip/Menu — Launch a tail attack or open the Remote display from a world map.
- Tongue Lash — Give Rez the tongue-lashing of his life.
- Run — Make GEX cruise through a world.

To adjust your joystick or game pad's configuration

Click to open the Microsoft Windows 95 Joystick Configuration wizard so you can adjust your joystick or game pad's settings.

BACK

MORE



Controller dialog box (continued)

To change your customized joystick or game pad settings to the default settings

Set Defaults button—Click to reset the game's default joystick or game pad settings.

BACK

