

# Welcome to Smartcode HandWEB™ CE 1.0

*Put the Internet in the Palm of your hand!*

Congratulations and thank you for choosing HandWEB for your Palm-sized PC running Windows® CE. With this software you will be able to navigate through the World Wide Web as easily as if you were using a full-sized desktop machine.

HandWEB will provide you with a powerful and convenient mobile browsing solution, complete with graphics if you choose. Use it to connect right to the Internet to read your favorite on-line news service, check the stock market, or even to keep up with current postings on your company's Intranet when you travel.

Whatever your specific needs, HandWEB will help you get the information you want when you want it, wherever you go.

See also: [General features](#), [Installing HandWEB CE](#), [Other Smartcode products](#)



## User License

HANDWEB SOFTWARE LICENSE AGREEMENT. NOTICE-READ BEFORE INSTALLING THIS PACKAGE

CAREFULLY READ THE TERMS AND CONDITIONS OF THIS AGREEMENT BEFORE INSTALLING THIS PACKAGE. INSTALLING THIS PACKAGE INDICATES YOUR ACCEPTANCE OF THESE TERMS AND CONDITIONS. IF YOU DO NOT AGREE WITH THE TERMS AND CONDITIONS OF THIS AGREEMENT, YOU MAY RETURN THE ENTIRE PACKAGE AND YOUR RECEIPT WITHIN 30 DAYS TO THE PLACE OF PURCHASE FOR A REFUND IN THE AMOUNT YOU PAID.

### 1. Definitions

The SOFTWARE is licensed (not sold) to you, and Smartcode Software Inc. ("SMARTCODE") owns all patents, trademarks, copyrights, trade secrets, and other proprietary rights in the SOFTWARE. The term "SOFTWARE" includes all copies of the HANDWEB VERSION, associated media, printed materials, and electronic documentation.

### 2. Agreement

This SMARTCODE License Agreement ("License Agreement" or "Agreement") is a legal agreement between you and SMARTCODE for use of the SOFTWARE.

### 3. Property

The SOFTWARE which accompanies this License Agreement is the property of SMARTCODE and is protected by copyright law and international copyright treaties, as well as other intellectual property laws and treaties. SMARTCODE retains all intellectual property rights including, but not limited to, patent, trademark, copyright, and trade secret rights in the SOFTWARE.

#### 4. License Grant

a. Authorized Use. SMARTCODE grants you a nonexclusive license to use the SOFTWARE on a single computer. You may make one copy of the SOFTWARE's computer program for back-up purposes only.

b. Restrictions. You may not: (1) copy (other than once for back-up purposes), distribute, rent, lease or sublicense all or any portion of the SOFTWARE; (2) modify or prepare derivative works of the SOFTWARE; (3) use the SOFTWARE in a computer-based services business or publicly display visual output of the SOFTWARE; (4) transmit the SOFTWARE over a network, by telephone, or electronically using any means; or (5) reverse engineer, decompile or disassemble the SOFTWARE. You agree to keep confidential and use your best efforts to prevent and protect the contents of the SOFTWARE from unauthorized disclosure or use.

c. Transfer. You may transfer the SOFTWARE, but only if the recipient agrees to accept the terms and conditions of this Agreement. If you transfer the SOFTWARE, you must transfer all computer programs and documentation and erase any copies residing on computer equipment. Your license is automatically terminated if you transfer the SOFTWARE.

#### 5. Limited SOFTWARE Warranty

For 30 days from the date of shipment, we warrant that the physical media (for example, diskette) on which the SOFTWARE is contained will be free from defects in materials and workmanship. This warranty does not cover damage caused by improper use or neglect. We do not warrant the contents of the SOFTWARE or that it will be error free. The SOFTWARE is furnished "AS IS" and without warranty as to the performance or results you may obtain by using the SOFTWARE. The entire risk as to the results and performance of the SOFTWARE is assumed by you. To obtain warranty service during the 30-day warranty period, you may return the SOFTWARE (postage paid) along with your receipt with a description of the problem to Vendor. The defective media in which the SOFTWARE is contained will be replaced at no additional charge to you.

#### 6. Remedy

In addition to the terms of paragraph 5 of this Agreement, if you do not receive media which is free from defects in materials and workmanship during the 30-day warranty period, then you may obtain a refund for the amount you paid for the SOFTWARE by returning the entire package, along with your receipt, to the place of purchase within the 30-day warranty period.

#### 7. Disclaimer of Warranty and Limitation of Remedies

a. THE WARRANTIES IN THIS AGREEMENT REPLACE ALL OTHER WARRANTIES, EXPRESS OR IMPLIED, INCLUDING ANY WARRANTIES OF MERCHANTABILITY OR FITNESS FOR A PARTICULAR PURPOSE. WE DISCLAIM AND EXCLUDE ALL OTHER WARRANTIES. IN NO EVENT WILL OUR LIABILITY OF ANY KIND INCLUDE ANY SPECIAL, INCIDENTAL OR CONSEQUENTIAL DAMAGES, INCLUDING LOST PROFITS, EVEN IF WE HAVE KNOWLEDGE OF THE POTENTIAL LOSS OR DAMAGE. IN NO EVENT SHALL SMARTCODE'S LIABILITY EXCEED THE PURCHASE PRICE OF THE SOFTWARE.

b. We will not be liable for any loss or damage caused by delay in furnishing a SOFTWARE or any other performance under this Agreement.

c. Our entire liability and your exclusive remedies for our liability of any kind (including liability for negligence except liability for personal injury caused solely by our negligence) for the SOFTWARE covered by this Agreement and all other performance or nonperformance by us under or related to this Agreement are limited to the remedies specified by this Agreement.

d. Some states do not allow the exclusion of implied warranties, so the above exclusion may not apply to you. This warranty gives you specific legal rights, and you may also have other rights which vary from state to state.

#### 8. Termination

This Agreement is effective until terminated. You may terminate it at any time by destroying the SOFTWARE, including all computer programs and documentation, and erasing any copies residing on computer equipment. This Agreement also will terminate if you do not comply with an terms or conditions of this Agreement. Upon such termination you agree to destroy the SOFTWARE and erase all copies residing on computer equipment.

#### 9. U.S. Government Restricted Rights

The SOFTWARE is provided to the Government only with restricted rights and limited rights. Use, duplication, or disclosure by the Government is subject to restrictions set forth in FAR Sections 52-227-14 and 52-227-19 or DFARS Section 52.227-7013(C)(1)(ii), as applicable.

#### 10. MISCELLANEOUS

The Agreement shall be construed by the laws of California. If any part of this Agreement is found to be void or unenforceable, then it will not affect the validity or enforceability of the balance of this Agreement, which shall remain valid and enforceable according to its terms. You agree that the SOFTWARE will not be shipped, transferred or exported into any country or used in any manner prohibited by the United States Administration Act or any other export laws, restrictions or regulations. This Agreement may only be modified by a license addendum which accompanies this license of an upgrade to the SOFTWARE, or by a written document that has been signed by you and an officer of SMARTCODE. This Agreement automatically terminates if the licensee violates any of the terms of this Agreement.

#### 11. Additional Information

If you have any questions regarding this Agreement, or if you wish to contact SMARTCODE for any reason, please write to Smartcode Software, Inc., Customer Service, Smartcode Software, Inc., Sorrento Towers, 5355 Mira Sorrento Place, Suite 100, San Diego, CA 92121. You may also contact us by sending electronic mail to [info@smartcodesoft.com](mailto:info@smartcodesoft.com).

## Copyrights and Trademarks

© 1999. Smartcode Software Incorporated. All rights reserved. HandWEB and HandWARE are trademarks of Smartcode Software Incorporated. Microsoft, Windows and the Windows CE logo are either registered trademarks or trademarks of Microsoft Corporation in the United States and/or other countries. All other trademarks are properties of their respective owners.

This documentation is being provided "AS IS", and though Smartcode Software makes every effort to provide the most accurate information available at the time of writing, Smartcode Software makes no warranty as to its accuracy. Any use of the technical documentation or the information contained herein is at the sole risk of the user. Smartcode Software reserves the right to make changes with notice.

## Registering your product

Print or copy this form, fill it in, and mail or fax it back to us in order to register your copy of HandWEB. This will help us keep you posted of improvements, free patches, and upgrades to your product.

#### Our fax numbers:

##### **North America**

+1 (619) 597-7444

##### **Europe**

+33 (0)4 67 59 30 48

##### **Asia-Pacific**

+65 227 26 92

**Send by e-mail to:** [register@smartcodesoft.com](mailto:register@smartcodesoft.com)

**Product name / version:**

**Serial number:**

**Your name:**

**Title:**

**Company name:**

**Address:**

**City:**

**State/Province:**

**Zip/Postal code:**

**Country:**

**Phone:**

**Fax:**

**E-mail:**

**What kind of Win CE  
computer do you have?**

**What kind of modem do  
you use to connect to  
the Internet?**

## Smartcode support services

Support for HandWEB may be obtained from either our U.S., European, or Asia-Pacific offices by phone, fax, or e-mail. We provide standard technical support for this software free of charge for 30 days after purchase. Due to the volume of telephone calls, priority is given to questions asked via e-mail. Please register your product so we can keep you informed on new releases, upgrades, or patches.

Check the Frequently Asked Questions on our Web site for information related to your product:

<http://www.smartcodesoft.com/support/support.html>

You may contact our sales or technical support staff at the following addresses:

**United States:**

Smartcode Software, Inc.  
Sorrento Towers  
5355 Mira Sorrento Place, Suite 100  
San Diego, CA 92121  
Phone: 1 (619) 597-7544  
Fax: 1 (619) 597-7444  
<http://www.smartcodesoft.com>  
[support@smartcodesoft.com](mailto:support@smartcodesoft.com)

**Europe:**

Smartcode Technologie, S.A.  
Cap Alpha  
Avenue de l'Europe, Clapiers  
34940 Montpellier, France  
Phone: +33 (0)4 67 59 30 40  
Fax: +33 (0)4 67 59 30 48  
<http://www.smartcode.fr>  
[support@smartcode.fr](mailto:support@smartcode.fr)

**Asia-Pacific:**

Smartcode Software Pte Ltd  
89 Neil Road #03-05  
FBC  
Singapore 088849  
Phone: +65 326 06 84  
Fax: +65 227 26 92

# General features

HandWEB 1.0 will allow you to surf a great majority of Internet Web sites, but due to the nature of the platform and the fast evolution of the Internet we cannot guarantee that it will support *all* sites. We have made every effort to make sure HandWEB supports the most-used services available on the Internet today, including search engines, password-protected and subscription sites, news, weather, etc.

Please note that we will continue to make improvements in this software, and that you should be sure to [register now](#) so that we can keep you informed of important developments. At this time, HandWEB does NOT support Java or Frames.

Current HandWEB features:

- Connects directly to your regular Internet Service Provider using the Palm-sized PC's integrated TCP/IP software
- Offers both text and graphic-mode browsing
- Displays images (GIF and BMP)
- Loads locally-stored HTML pages
- Includes intuitive navigation buttons
- Compatibility with most Web sites, including those with tables
- Supports Cookies and basic authentication
- Handles Web sites with fill-in forms, allowing you to perform searches, on-line registrations, and other types of browsing which require data entry, including support for Web buttons, pull-down menus, lists, and checkboxes.
- Optionally uses Proxy servers
- Lets you customize your own list of bookmarks for fast access to frequently visited sites

See also: [Installing HandWEB CE](#)

## Installing HandWEB CE

HandWEB software operates entirely on your Palm-sized computer. To install the software, you will need to connect your Win CE device to your desktop PC in order to run Setup and upload the HandWEB program file. After installation there is no interaction to your desktop computer.

Installation is easiest if you connect your Palm-sized PC to your desktop computer and make sure the connection is "live". Of course, you may still run the installation procedure as described here even if your device is not connected, and the software will be uploaded next time connection is established.

To install HandWEB CE:

1. Insert the delivery floppy into the drive on your desktop computer, or use the Windows Explorer to locate the installation program **Setup.exe** supplied with this delivery. To begin installation, you may double-click on Setup.exe, or use the Start menu, select Run, type a:\setup, (or indicate the correct location) and press Enter.
2. Follow the instructions on-screen to confirm installation. Setup will check your device configuration and prompt you to continue.
3. If the Win CE device is connected, HandWEB CE will be transferred immediately. If not, it will be uploaded upon your next connection to your PC's Windows CE services. By default, the software will be installed in the following directory on your CE device: \Program files\Smartcode Software\HandWEB

See also: [Starting HandWEB](#)

## Starting HandWEB



To start HandWEB, tap on the **Start** menu, and select **Programs, HandWEB**.

You do not have to be connected to the Internet in order to run through the application on your Palm-sized PC, or to open HTM (or HTML) pages that are stored locally. However, if you want to browse the Web now you have to [make sure the connection is active](#).



*HandWEB's default startup page*

In this screen you can see the main button bar with options for easy navigation, as well as the **File** and **Tools** menus for accessing all HandWEB options.

See also: [HandWeb configuration](#), [Once you're connected](#), [Internet connections](#)

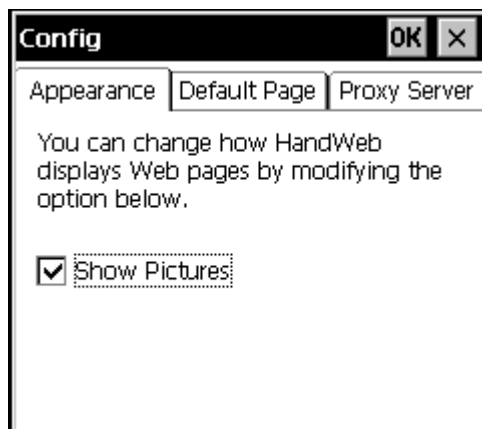
## Configuration

Before you begin [navigating](#), you may adjust various options within HandWEB to best meet your needs:

- Whether or not to display graphics
- Your default Web pages
- Proxy server configuration

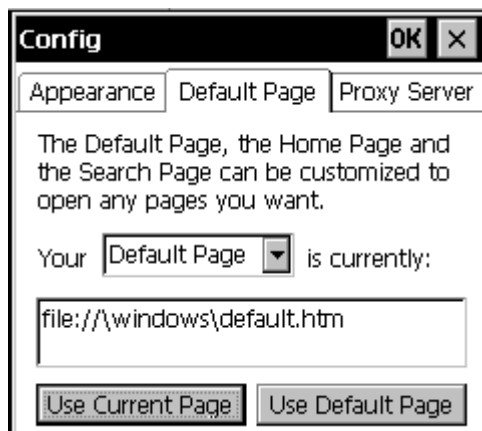
To configure HandWEB, select **Tools, Options** from the main menu.

### Appearance



Place a check in the **Show Pictures** checkbox to view GIF and BMP images in the Web pages you browse. Remove the check for text-mode browsing.

### Default Page



Use the pull-down menu (shown here as *Default Page*) to assign Web pages for:

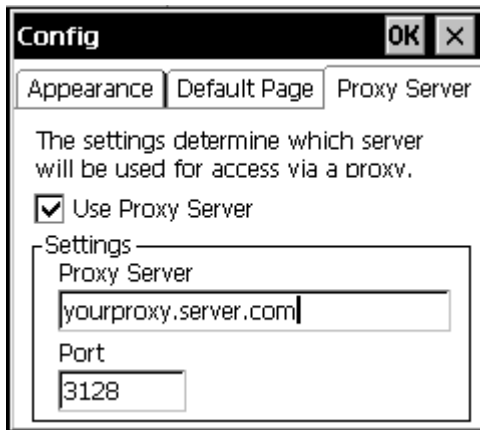
**Default page** — The page that is loaded upon program startup. This page is usually stored locally on the Palm-size PC.

**Home page** — The page that HandWEB loads when you choose **Home** from the tools menu. This page usually represents the Internet site you visit most.



**Search Page** — This is used to specify the *search engine* that HandWEB will use when you select **Search the Web** from the Tools menu.

### Proxy Server



A Proxy server is a host machine that acts as a "Web access helper" for browsers. A proxy can, for example, pre-format or filter Web pages before passing them to your browser. It can also store frequently accessed Web pages locally so that your browser does not have to go all the way to the original site to read requested pages. Proxy servers are most often used in corporate environments.

*HandWEB does not require the use of a proxy server*, as it accesses the Internet directly and analyzes the Web pages "on the fly". You may, however, use a proxy server if you choose.

To identify your proxy server fill in the fields accordingly:

**Proxy server** — Enter the name or numeric IP address of the proxy server you intend to use.

**Port** — Enter the port number used by the proxy. We recommend that you check with your system administrator to get the exact details.

Tap on the checkbox **Use Proxy Server** in order to force HandWEB to use the specified proxy server.

See also: [Navigating](#)

## Browsing with HandWEB

After you have opened your Internet connection, you may start browsing the Web.

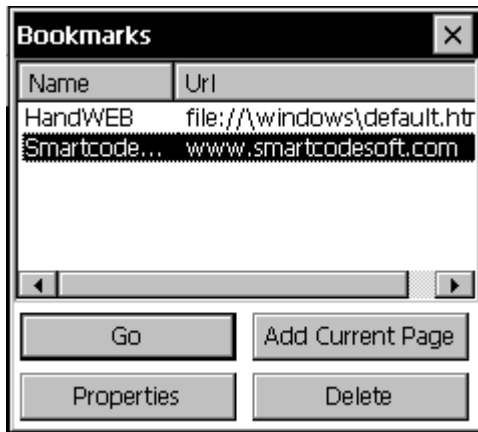
### Entering Web site addresses directly

To open a Web page, simply enter a URL ("Uniform Resource Locator", or Web site address) in the address field:



You do not have to enter the prefix "http://" in front of a URL, though you may if you choose. HandWEB supports both **http://** and **file://** prefixes.

### Opening bookmarked pages



To open a page that you have saved as a bookmark, select **Tools, Bookmarks**. Then highlight the page you wish to open and press **Go**.

See also: [Using bookmarks](#), [Navigation](#)

## Navigation

Browsing with HandWEB is almost like browsing with your regular desktop browser. Simply point and click on links to navigate around the Web.



*Sample Web page*

As you browse, you may use the quick-access icons in the menu bar:



**Back**, returns to the previous Web page in [History](#)



**Forward**, after having done a "back", this button moves forward through History



**Stop**, stops data transfer



**Refresh**, reloads the current page and updates the contents

You may also use the following options in the **Tools** menu (in addition to Back, Forward, Stop, and Refresh as mentioned above):

**Home page** — Opens the Web page you have configured as the [default Home page](#).

**Search the Web** — Opens the Web page you have specified as your [default search engine](#).

**Add current page to bookmarks** — Saves the currently-displayed page as a bookmark for fast access in the future.

**Bookmarks** — Lets you edit your [bookmark](#) list.

**Options** — Select this to configure various [options](#) within HandWEB to best meet your needs.

**See also:** [Using bookmarks](#), [Dialup TCP/IP settings](#)

## Using bookmarks

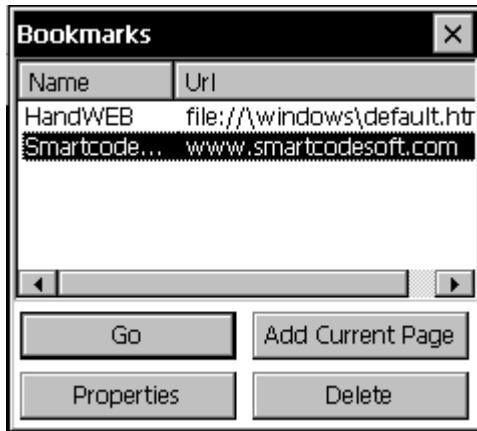
HandWEB lets you organize Web site references (URLs) as Bookmarks in order to provide fast access to frequently visited sites.

### Adding bookmarks as you browse

When HandWEB is displaying a Web page that you would like to bookmark, select **Tools, Add current page to bookmarks**.

### Editing bookmarks

You may access your bookmarks at any time by selecting **Tools, Bookmarks**.



The buttons in this window are as follows:

**Go** — To open a bookmarked page, highlight a bookmark, then click on **Go**. You may also double-click on bookmarks to open them. *Note: Your Internet connection must be open when you do this or you will receive an error message.*

**Add current page** — Saves the currently displayed page as a bookmark.

**Properties** — This allows you to view and/or change a bookmark's properties, as shown here:



Enter a Name for your reference, and the real Web site address in the URL field. You do not need to include the "**http://**" prefix for Internet sites, but should use the prefix "**file://**" if the URL points to a locally saved page.

**Delete** — Use this button to remove the highlighted bookmark.

**See also:** [Troubleshooting](#)

## Before you connect

Most of the helpful advice and documentation for connecting to your ISP (Internet Service Provider) can be found in your Palm-sized PC documentation, or obtained directly from your ISP. This section is designed to give you basic guidelines for getting started with a standard dialup Internet connection using PPP.

### What is PPP?

PPP (a form of TCP/IP) is the Internet protocol used by computers to communicate with each other. PPP stands for "Point-to-Point" protocol, and is by far the most popular mechanism for connecting mobile devices to the Internet today. You must open a PPP connection with your Internet Service Provider before you can browse the Web with HandWEB.

### What you need to connect to the Internet

- A supported internal, external, or InfraRed [modem](#) for your mobile device
- A dialup account with an Internet Service Provider (ISP)

**Information to get from your ISP**

- The telephone access number
- Your user name and password
- Depending on the ISP, you may also need to supply additional TCP/IP information (such as a connection script or the IP address of the Domain Name Server (DNS))

See also: [TCP/IP settings](#), [Modem setup](#)

## Dialup TCP/IP settings

**Create a new dialup connection on your Palm-sized PC by following these steps:**

1. Open the **Startup** menu, and select **Programs, Communication**, then click on **Connections**.
2. Double-click on **Create a new connection** and follow the instructions on the screen.
3. Enter a name for the service, tap on Remote connection, then click on **Next**.
4. Enter specific [Modem](#) and TCP/IP settings if indicated by your ISP, then click on **Next**.
5. Then enter the area code, telephone number, and country for your ISP account, then click on **End**.

**Connecting**

1. Use the dial-up connection you created above to initiate the connection.
2. When prompted, enter or confirm your user name and password.
3. Once a connection is established, you may start HandWEB CE to browse the Web.

**Note:** Your modem may require a power supply during operation.

## Modem setup

The modem settings you use will depend on your particular hardware and software. To check your modem configuration

1. Open the **Startup** menu, and select **Programs, Communication**, click on **Connections**.
2. Select your current Internet configuration, or [create a new one](#).
3. Below **Select a modem**, you can see a pull-down the list of currently available modems. In general, if you are using a snap-on, integrated, or external modem you should select **Hayes Compatible on Com 1**. For device-specific, InfraRed, or "software" modems to

appear in this list, you should install the drivers supplied by the manufacturer.

4. Tap on Configure to set various port parameters such as speed and other call options. If the default values do not work properly, please consult your modem's user manual for more information.

## Troubleshooting

HandWEB can display three types of error messages: those specifically related to Web protocols, those related to hardware, and those generated by HandWEB itself. For more information on Internet connections and modem configurations, please check the user guides delivered by the manufacturer.

### HandWEB error messages

#### **Unknown type of file**

HandWEB only supports HTM/HTML, GIF, BMP, and TXT format files.

#### **[file name] is not accessible. The network path was not found.**

You tried to open a local Web page (stored on your PPC as a file), but HandWEB could not find it. Check the path and spelling and try again. Also try looking up "all files" when you select **File, Open**, and not just "HTML" files.

#### **HandWeb cannot open the Internet site [name]**

The Web server may be too busy, or your Internet connection could be down.

#### **A connection with the server could not be established.**

The Web server may be too busy, or your Internet connection could be down.

#### **HandWeb does not support mail links at this time.**

You clicked on a "mailto:" link, which is not supported by HandWEB 1.0

#### **HandWeb does not support newsgroups at this time.**

You clicked on a link to a newsgroup, which is not supported by HandWEB 1.0

### **Server-generated error messages (simply displayed by HandWEB, which indicates proper application behavior)**

**Code 400** — The request could not be processed by the server due to invalid syntax.

**Code 401** — The requested resource requires user authentication.

**Code 402** — Not currently implemented in the HTTP protocol.

**Code 403** — The server understood the request, but is refusing to fulfill it.

**Code 404** — The server has not found anything matching the requested URI.

**Code 405** — The method used is not allowed.

**Code 406** — No responses acceptable to the client were found.

**Code 407** — Proxy authentication required.

**Code 408** — The server timed out waiting for the request.

**Code 409** — The request could not be completed due to a conflict with the current state of the resource. The user should resubmit with more information.

**Code 410** — The requested resource is no longer available at the server, and no forwarding address is known.

**Code 411** — The server refuses to accept the request without a defined content length.

**Code 412** — The precondition given in one or more of the request header fields evaluated to false when it was tested on the server.

**Code 413** — The server is refusing to process a request because the request entity is larger than the server is willing or able to process.

**Code 414** — The server is refusing to service the request because the request URI is longer than the server is willing to interpret.

**Code 415** — The server is refusing to service the request because the entity of the request is in a format not supported by the requested resource for the requested method.

**Code 500** — The server encountered an unexpected condition that prevented it from fulfilling the request.

**Code 501** — The server does not support the functionality required to fulfill the request.

**Code 502** — The server, while acting as a gateway or proxy, received an invalid response from the upstream server it accessed in attempting to fulfill the request.

**Code 503** — The service is temporarily overloaded.

**Code 504** — The request was timed out waiting for a gateway.

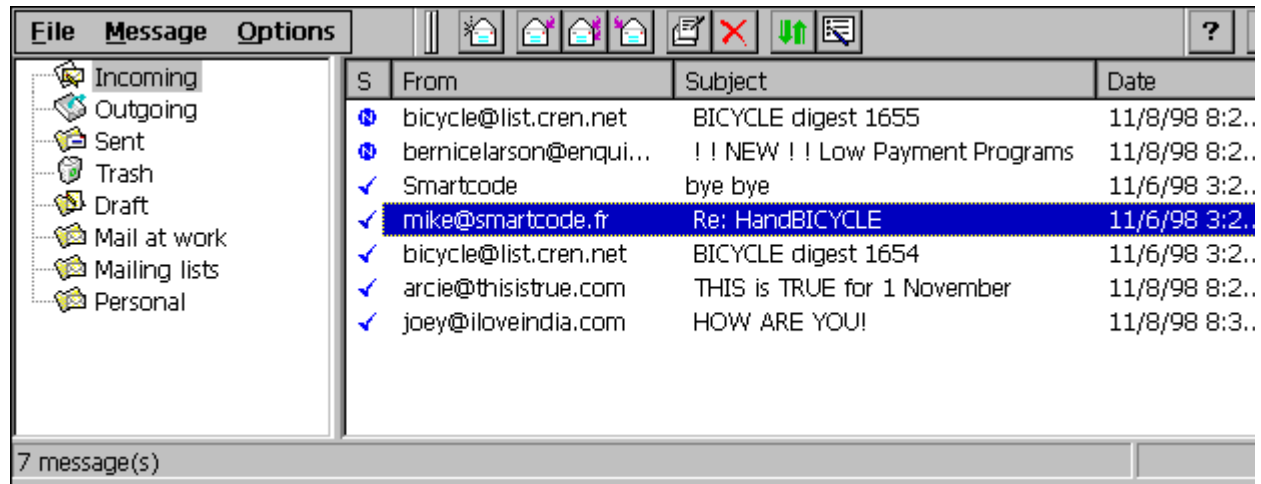
**Code 505** — The server does not support, or refuses to support, the HTTP protocol version that was used in the request message.

# Smartcode Products

Connect your Handheld or Palm-size PC running Windows® CE using these powerful communication packages. For more information, please see our Web site: <http://www.smartcodesoft.com>

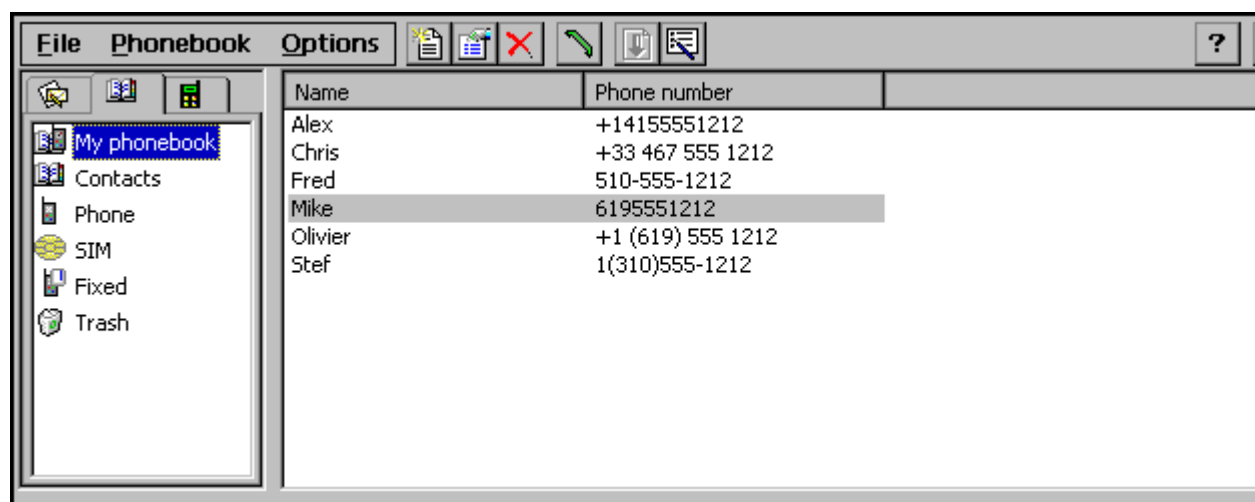
## HandMAIL for America Online

HandMAIL™ is a full-featured Internet E-mail application for Windows CE. This software allows users to send and receive e-mail via America Online. (*Handheld PC platform only*)



## HandPHONE CE

HandPHONE™ is a full-featured mobile phone manager application for Windows CE 2.0-based computers. This application gives handheld PC users a convenient Windows interface to the two most-used features on mobile phones, phone book management and short messages using SMS. (*Handheld and Palm-sized platforms*)



## HandMINITEL (*available in France only*)

HandMINITEL™, a specialty item designed for the French market, offers a realistic full-color Minitel emulator for use on Windows CE computers. It allows users to connect right to France



Telecom's Minitel services just as they would from a standard Minitel terminal. (*Handheld and Palm-sized platforms*)



*HandMINITEL on Palm-size PC (gray scale on PPC)*