



*Welcome,*

*Dominoes Deluxe* is really 12 of the best domino games in one! It includes, '**Draw**', '**Block**', and the all time favorite '**Muggins**'. Each of these can be played using boneyards of sixes, nines, twelve's, and fifteen's.

*This* is yet another in a line of products we call our "*InterSoft Series*". Each of these products looks and feels as smooth as this one, so keep an eye open for them.

Sincerely,

**WinGames.Inc**



# Match Play



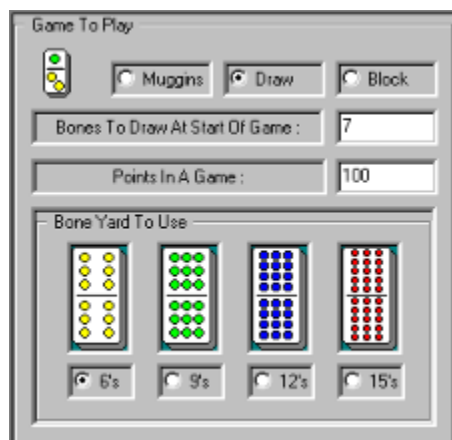
## Starting A Match

*To* start a new match, from the 'Game' menu, click on the 'Match' menu item or click the toolbar button. This will display the Match Play dialog box.

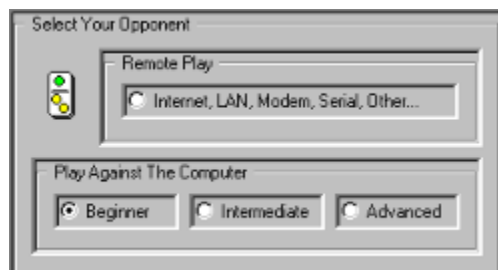
*F*irst, enter a name you would like to be called by (the default is Player). This is the same name that will appear on the Scorecard, and is also the default session name used for any remote matches you play.



*N*ext, select the type of match you would like to play. There are three different games to choose from. Each one is different and presents a different kind of challenge.



*T*hen select your opponent. Selecting 'Remote Play' will start the sequence for connecting to an opponent when you actually start the match. To play against the computer click any of the skill levels.



Now you are ready to start your match. Press the 'Start New Match' button and the fun begins. Match play continues until you start a new match. To end a remote match that you are connected to, select the computer as an opponent or click on the 'Remote Play' box.



### **Playing A Match**

Once you've started a new match, match play continues until you either quit playing or start a new match. At the end of every game the Scorecard appears and displays the current score.



### **Opening A Match**

To open a match, from the 'Game' menu, click on the 'Open' menu item or click the toolbar button. The match will be loaded right at the point you saved it at. Remote matches must be saved and loaded at the same point by both players.



### **Saving A Match**

To save a match, from the 'Game' menu, click on the 'Save' menu item or click the toolbar button. The match will be saved at the point you are at in the game.



### **Scorecard**

The scorecard keeps track of game and match progress. It is displayed after each game. To view the scorecard, from the 'View' menu, click on the 'Scorecard' menu item or click the toolbar button.



# Game Play



## Start New Game

To play a game, from the 'Game' menu, click on the 'New Game' menu item or click the toolbar button.

## General Play

The object of dominoes is to be the first one with no bones left. This is called a "Domino". You do this by taking turns placing bones whose dots match end to end.

To place a bone, select a bone that matches one on the board, and touch it to the edge of the bone you want it to be placed on. If you don't have a matching bone, select one from the bone yard.

The first double is special in that you can place bones at both ends, along with above and below. To place a bone above the first double, touch the bottom edge of your bone to the top edge of the bone on the board, and visa versa to place your bone below the first double.

## Starting A Game (Computer Play)

When you start a new game the computer automatically selects the starting bone and places it, and then it randomly selects the starting player and off you go.

## Starting A Game (Remote Play)

Starting a game when remotely connected is no different than in computer play mode, the only difference is that the player (client) who connected to the opponent (server) is the only one who can start a game. In general this person (client) also controls match play. They (client) select the game, bone yard, bones to draw, and points to play up to. When they start a new game, it is their game settings that are used to play by.

## Playing A Game

You take turns placing bones until either of you are out of bones or blocked and can't make a play.

## Scoring A Game

Each players remaining bones are totaled by adding up the total number of dots, and the lowest total scores the difference.

## Specific Game Rules

### Muggins

A player tries to get all ends of the board to total a multiple of 5. When this happens they score that amount of points.

**Block**

A player tries to block the opponent by placing bones so that the opponent can't move. When this happens the player that is blocked loses a turn.

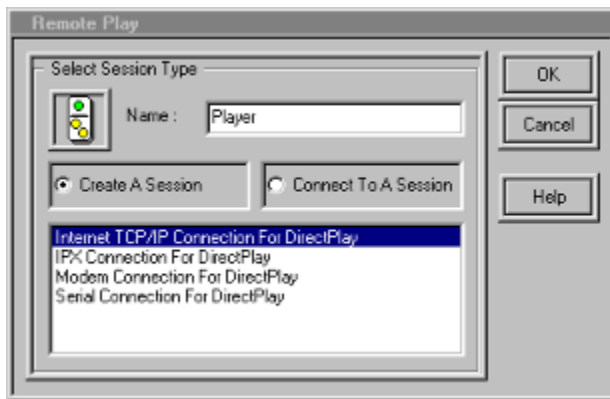


# Remote Play

**Important Note:** Dominoes Deluxe requires Microsofts DirectX / Direct Play support for all remote sessions. If you don't have it loaded on your machine you can download from them at no charge. It provides all the underlying transport support.

## Starting A Remote Match

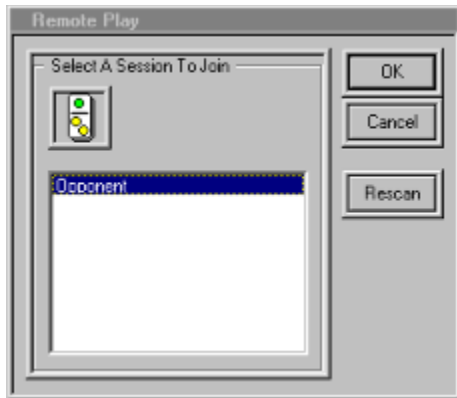
To start a remote match, from the 'Game' menu, click on the 'Match' menu item or click the toolbar button. Then select 'Remote Play' as your opponent, and click the 'Start New Match' button. The remote play dialog box will appear. If the list box has no selections in it, then you need to load Microsofts DirectX / Direct Play.



One player then creates a session and waits for the other player to connect to that session. If you create the session your computer waits for a connection. If you are connecting to a session, depending on the type session, you will be asked different types of connection questions.

**Important Note:** For Internet play you should connect to your service provider before starting a remote session. Once connected to your provider, you need to get the IP address you are at so you can tell your opponent what address to connect to. You can see what address you are connected as by running the "WinIPcfg.exe" utility found in your windows directory. Give this IP Address to your opponent so that they can use it to connect to you. This address changes each time you connect to your service provider.

If you are connecting to a session, when a session is found the following Dialog box will appear. Select the session you want and click the Ok button. If no sessions are found it still appears but with no choices. At that point you can rescan using the rescan button.



***O**nce you are connected to a session, your 'Chat Window' will appear. If for some reason you get disconnected or just quit playing by starting a new match, the 'Chat Window' will disappear.*



### **Chat Window**

***T**his window allows you to talk to your opponent while you are connected. Type your message and hit the return key. You can toggle this window on and off even if you are not connected. To do this, from the 'View' menu, click on the 'Chat Window' menu item or click the toolbar button.*

### **Ending A Remote Match**

***T**o end a remote match and disconnect from an opponent, from the 'Game' menu, click on the 'Match' menu item or click the toolbar button. Then select 'Remote Play' as your opponent. This will prompt you to disconnect from the remote session you are in.*



## Other Features



### Sound

To toggle sound on and off, from the 'Options' menu, click on the 'Sound' menu item or click the toolbar button.



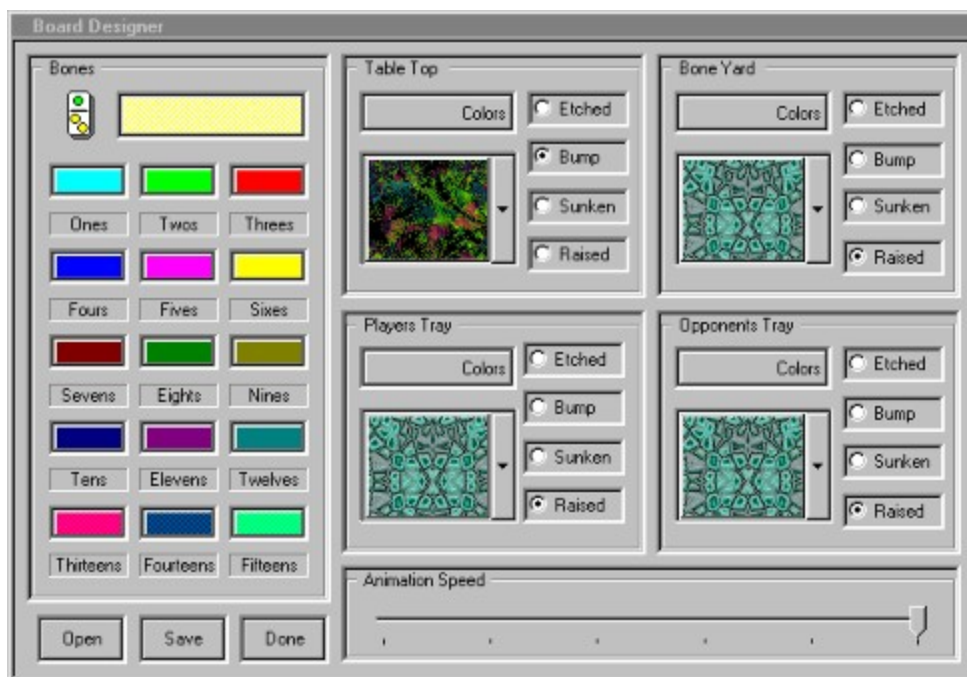
### Music

To toggle music on and off, from the 'Options' menu, click on the 'Music' menu item or click the toolbar button. There are eight MIDI selections included. They play in a randomly started, curricular pattern. If you want to replace any of them with your own MIDI selections, they are named Music1.mid - Music8.mid, and are in the installation directory of this product.



### Board Designer

Use the board designer to design any type layout you like. There are different materials to choose from along with every color your computer supports. When you choose a different layout it is stored until you change it again. You can also open or save a particular layout you like.





## ***Great Gift Idea!***

### **Additional CD's & Disks!**

**WinGames.Inc Collection** - All our best games on one CD!

**Windows '95 Collection** - 5 of our great games on one CD. Includes Game Chest, BIG 8 Solitaire, Botz, Penny's Arcade and Total Recall. A real value with over 15 fully enabled games.

**Pro Backgammon** - Another 'InterSoft' game. The '**ZDNet 1997 Product Of The Year**' winner for board games. It has 5 levels of match play, 3 levels of computer play, Remote play over the Internet, Modem, Lan, or Serial connection along with sound and music.

**All American Gin Rummy** - 3 great gin games including Standard Gin, Hollywood Gin, and Oklahoma Gin Rummy. It features 3 levels of computer play, Remote play over the Internet, Modem, Lan, or Serial connection along with sound and music.

**Dominion** - Another 'InterSoft' game. This classic board game will challenge even the most experienced game player. It features 3 levels of computer play, Remote play over the Internet, Modem, Lan, or Serial connection along with sound and music.

**Dominoes Deluxe** - Our fourth 'InterSoft' game. This classic allows you to play Draw, Block, and Muggins on boneyards of 6s, 9s, 12s, 15s. It features 3 levels of computer play, Remote play over the Internet, Modem, Lan, or Serial connection along with sound and music.

**Big 8 Solitaire** - Eight of the greatest solitaire games of all time with full computer play. Includes Auld Lang Syne, Canfield, Flower Garden, Grannies Clock, Klondike, Little Spider, Magic Carpet and Osmosis.

**Game Chest** - A challenging collection of games including Backgammon, Yatze, and Rummy to be played with two players or against the computer. Two versions of mind numbing Solitaire as well, Queen's Audience and Fortune's Favor.

**Total Recall** - Follow the sights and sounds without being dazzled. A quick paced game to challenge your memory and reaction time. Not a simple simon. Truly addicting.

**Penny's Arcade** - Try your hand at a shooting gallery with a full range of skill levels and configuration options. For one to four players, a carnival of prize winning fun.

**Botz** - Enter the Gardens of Zardonia and battle the Botz. Over 60,000 exciting gardens, with rendered graphics and arcade style sound.

**Board Games for 2** - Chess, Checkers, Backgammon, Goban, Pipes, Race Chase, Flag Ship and Fox & Hounds. Play with a friend on the same machine, on any network or using a modem. (available in 3 1/2" diskette and email formats only)

**Solitary Confinement** - A '**ZDNet 1996 Product Of The Year**' nominee for card games it has eight solitaire games which require a full range of skill, knowledge and lady luck. Fortune's Favor, Accordion, Beleaguered Castle, Calculation, Quadrille, Four Season's, Queen's Audience and Chameleon. (available in 3 1/2" diskette and email formats only)

**Super Shareware Game Collection** - For those who wish to "try before they buy", the shareware versions of all games listed below on one CD.

---

Visit our website at <http://www.wingames.com> **WinGames.Inc**

