

Features

If you have been looking for a fast, easy to use yet powerful backup program for all those backups of your important data that you know you should do, but never get around to. Look no further! MOB v2 will let you do your backups by either copying all of the data, or zip it onto almost any media. Works with Zip & Jaz Drives, CD-RW, Hard Drives or even Floppy Disks using the Diskspan option. Crammed with powerful options, still extremely easy to use. Create and save your set, and you will never be more than two click away from a backup. There is even a Run Multiple option to make all of your backups in just one go. Below is list of all the possibilities in MOB v2 (see '[Version History](#)' for a complete list).

- Make Unlimited Backup sets
- Run Multiple Backups at the same time
- Backup with Compression or Copy Only
- Backup individual files or whole folders and folder-systems (incl. sub-folders)
- Command Line Support
- Move Files / Folders
- Restore Files / Folders
- Add Empty Folders
- Add Hidden / System files (This applies for folders also)
- AutoSave-function
- Span over multiply disks
- Backup History (for a single set or the whole program)
- Internet LiveUpdate
- Y2K-Safe
- Password Protected Backups (only for compression)
- Default Options for all New Sets
- Drag'n'Drop capabilities when adding files/folders to backup
- Let MOB create a new folder with the current date
- Place a second backup to another drive/disk with a temporary backup path
- New helpfile in Windows standard help-format
- Logfiles (new to 2.1), Error Log and Backup Log.
- New style of Browse-dialogs (new to 2.1).
- Using the feature "Edit Item" you can manually edit each item to be backed up, i.e. to change a folder name or change a filter (new to 2.1).

FAQ

This FAQ was written when the program was released. Visit MOB's homepage to read an updated FAQ.

Q&A 1:

Q: I get this error-message: "File Not Found: <path incl. filter> ErrorCode: 767". What's wrong?

A: It's probably due to an empty folder. If you wish to add empty folders, select the option "Add Empty folder(s)".

Q&A 2:

Q: Does the mode "copy only" copy all files, Including files that are in use?

A: Yes!

Q&A 3:

Q: Can I run a backup to my CD-RW drive?

A: Yes, of course you can. You will need the software "DirectCD" from Adaptec. My guess would be that 95% of all sold CD-RW drives sold today come with the "DirectCD" program bundled.

Q&A 4:

Q: Can I run a backup to my CDR-drive?

A: No, this is not possible because MOB has no routines that can handle a CDR-drive.

Q&A 5:

Q: I'm trying to copy system-files in win98 with the backup method "copy only". Why do I get the message "cannot set file attributes to <fil> i/o code: 5 - access denied" ?

A: This is because Win98 sets the file attribute hidden and also system if you try to copy *any* system-file. MOB will then generate an error message because of this.

Q&A 6:

Q: Why do I get the message "Restore Failed! 0 file(s) were extracted" ?

A: Two possibilities; The first one is that the file(s) exist and you have *not selected* "Overwrite Files". It will cause this error message. The second possibility is that you have entered the wrong password (only if you have selected "Encrypt with password" in Tab Set Options).

Q&A 7:

Q: How come the error "Grid Index out of bounds" sometimes appear on the Restore Tab?

A: I have brought this to their attention and hopefully it will get fixed in a future release of the Delzip

package.

Q&A 8:

Q: I want to clear several items from "selected files&folders", but some doesn't get cleared. Why?

A: This is a bug in a standard Windows control. I have so far not been able to come up with a work around for this problem, but it will hopefully be fixed in a future release of MOB.

Q&A 9:

Q: When I restore files, they don't get restores in the correct directory! How come..?

A: You are propably using "Include Sub-Folder(s)" when the backup was taken, and also "Restore Full Path(s)" when you are trying to restore the backup. Example: If you have taken a backup from 'c:\my documents\' - that path is saved inside the zipfile and will be re-created later. If you specify the restore path to: 'c:\my documents\' the program will re-create the path 'my documents\' - the result will be that the files are restored in: c:\my documents\my documents'. So you will have to specify the restore path as: 'c:\'. The path inside the zipfile will be re-created and the files will be restored in: 'c:\my documents\'.

Version History

Version 2.1:

- Logfiles: Error and Backup Log's. If an error is generated it is saved to the Error Log. The result of backups are saved to the Backup Log. You can view both the logs from within MOB by turning on the options for them found in the Tools Menu. The logs will open in your default .txt viewer..
- The browse dialog, found in Set Options and Temp-Path, now has a new style with more options.
- Added a feature to manually edit an item to be backed up (Edit Set tab). This feature is available through the popup-menu in "Selected files & folders".
- Bug-fix: The zip method "Update" did not work properly in version 2.0. It has now been corrected in version 2.1.
- Bug-fix: Command Line Parameters did not work as they should. Corrected in 2.1.
- Bug-fix: When running Windows NT and using the NTFS filesystem there could sometimes be a problem browsing deep into the folder structure.
- Bug-fix: Backup method "Copy Only" did not work if a filter like " c:\win98\user.da* " was entered. MOB saw this as a file and did not search for any files like the filter entered , i.e." user.da* ".
- Bug-fix: MOB did not show all files that were backed up in the Restore Tab (for "Copy Only").
- Bug-fix: The filesearch-routine for the backup method "Copy Only" did not work 100% when the option "Add System/Hidden File(s)" was set.

Version 2.0:

- A completely re-designed interface. Almost everything has been taken down to the same level with tabs.
- New helpfile in Windows standard help-format.
- One default set options-file. If you always place your backups in a specified path or perhaps always use: Compression, Compression Lvl: 7. Then save this info in the default set options-file and every new set you create will have the default options!
- A new file and folder-box for "Edit Set" - now with 100% support for long filenames! I know this it has not worked correct all the time. You can also change the view-style for this box: Large Icons, Small Icons and Details.
- Hidden/System/Readonly-folders are now shown and can be added to your set! Your favorites-folder for example. If you want you can even backup your recycled folder!
- Command Line Parameters! You can start a backup or restore from the command line.
- Run Multiple - you can run a backup of several sets at the same time! The sets you select are placed in a queue and backed up one at a time.
- AutoSave - No need to think about saving your changes! MOB does it for you!
- Sort All Lists - every list will be sorted alphabetically.
- No SpeedSets. Instead every set is listed in a listbox and visible at all times.
- Recent Backups - an extra window showing the recent backups that have been run! You can view recent backups for a single set or for the whole program ("Program Backups").
- New date-formats in Program Options: day-month-year, year-month-day, month-day-year. All old formats have been replaced by these three.

- Check for duplicate folder(s) and file(s) in the set list. If you would add a folder with the same filter as you already have, then it will be rejected.
- A small quick-guide in Set Options. This explains the different options in one short sentence.
- Rename and Delete Set. You can now rename or delete a set inside MOB.
- Feedback through a status-bar. Example: When a file is saved or loaded.
- When running a backup or restoreing - a timer showing how much time that has elapsed since the start.
- New Options for compression is added: Add or Update an archive, Encrypt with password, DiskSpan, DiskSpan-Erase.
- If you select the backup method "Copy Only" - you can now choose if you want to "add system/hidden files" and also "add empty folders".
- MOB can check the net to see if a new version is available. The program can also download the new version.
- More information about the last backup: Date & Time, Elapsed Time and Files Archived.
- More space for the name of the set! You can now see up to 30 chars (if it is more than 30 chars - the name will be cut).
- No file-extensions is shown only the name of the set.
- All DLL-files are now placed inside MOB's program directory (instead of " windows\system ").

Final 1.0:

- Improved error checking.
- New filenames for the two DLL-files which MOB uses. Hopefully there will be no more problems with this..
- Two new text-labels when running a backup or restoring. Filenames are now being cut, if they are too long. Folders are which is not shown is replaced by "..." (like the windows standard).
- Added a check when MOB starts, to see if the the right DLL-versions.
- Fixed several bugs in the "Save Set"-dialog. For example; no check if the filename is valid was made.
- Corrected a minor bug in "Edit Set". Problems could occur when selecting several files and when clear was pressed - only some items were deleted.
- Changed the focus for every window - What component shall recieve the default focus.
- Updated the help.

Public Beta 2:

- Fixed a minor bug in backup options, when pressing cancel - nothing was restored.
- Fixed two major bugs in Delphi (which compiles MOB) that caused MOB to behave very strangely. For example windows closing - without me calling the close procedure! (*grr*) or dialogs not functioning properly.
- Corrected a minor bug when pressing "clear item" or "clear all" - modified wasn't set to true! This means that you could exit without saving.
- Fixed a bug in "edit set" - when adding a single file, an extra "\"-char was added. Resulting in a error when running a backup
- Added code for a "copy only"-mode. Read more about this in the help inside the program.
- Rearranged backup options for a "copy only"-mode. Renamed "Always overwrite backup" to "Always overwrite file(s)" (a more understandable title)
- Updated the help system - for example a "Questions & Answers" section.
- MOB saves the main window position. Every other window within MOB is being positioned with a specified index calculated from the main window. - No more windows

- appearing anywhere on the screen and MOB opening up at the same place as you left it.
- Took out an annoying messagebox when saving a backup set "Overwrite file?" - Not needed. But added a small confirmation messagebox, that a backup set has been saved correctly.
 - Merged together "Save Extra Pathname" and "Recurse Folders" into "Save Folder Structure".
 - Added better error-checking - which improved the general performance and behavior of MOB.

Public Beta 1:

- First version released.

Y2K-Bug

MOB v2 is Y2K-safe, here is the result of my thinking and investigation:

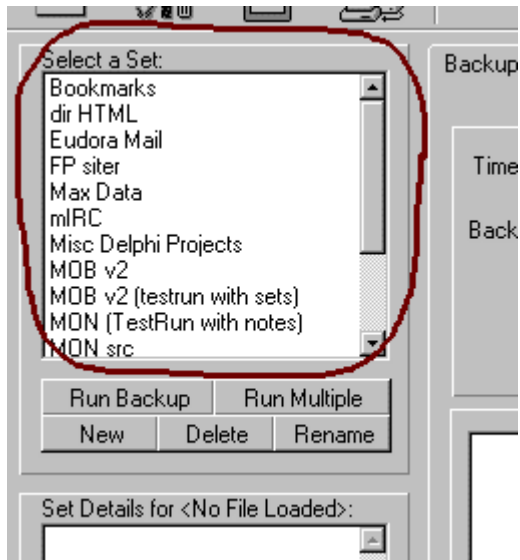
I have been in contact with the author of Delzip and was told that it should work.

MOB uses the freeware package Delzip (links can be found in the help menu) for the backup method: compression. I have contacted the author of Delzip I got the answer that it should work if the computer (BIOS) can handle the date 2000.

For the backup method: copy only, see above.

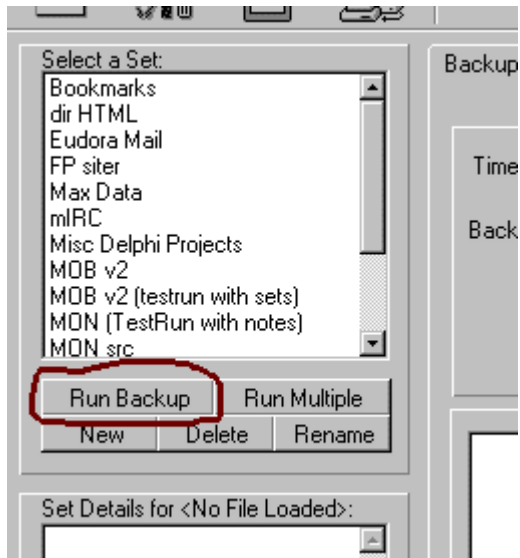
I think the program should work even if your computer can't handle the date 2000. You will probably get the year "00" instead, but I don't think it matters that much since, you know which year it is.. right? :-)

Select a Set



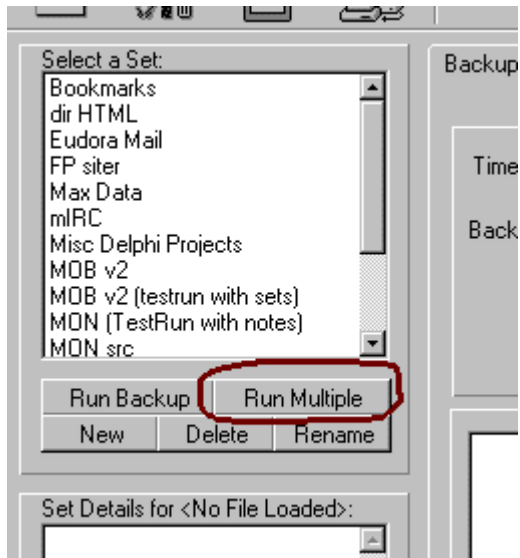
In this listbox you can see the sets you have created. Load a set by clicking on it with the left mouse-button. The listbox Set Details will then show all the details about the set you clicked on.

Run Backup



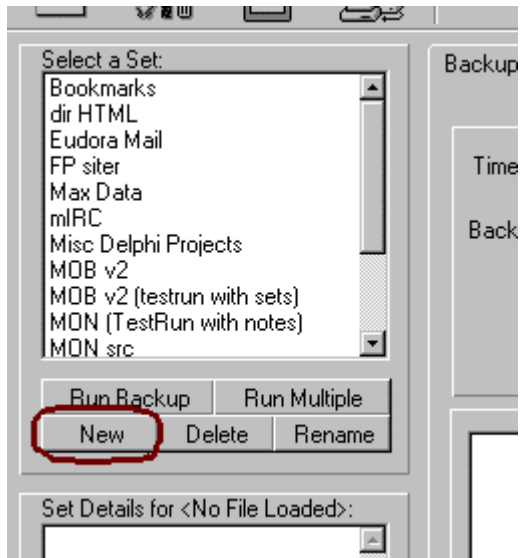
This button will run a backup with the loaded set. This is the fastest way to start a backup.

Run Multiple



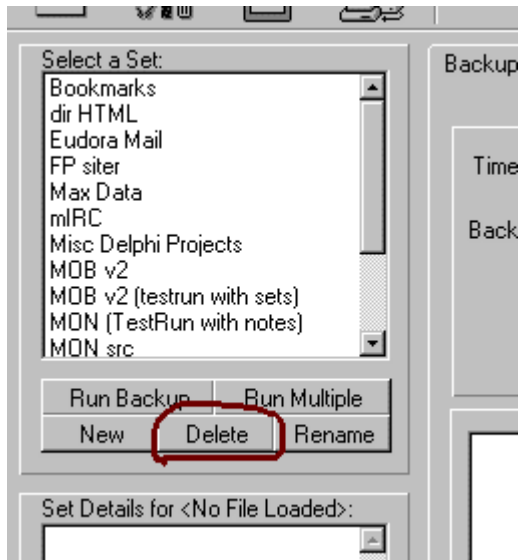
When pressing this button the Run Multiple-mode is activated. Hold down CTRL and select which sets to backup by clicking on them with the left mouse button. After you have chosen which sets to backup, press the button named Run Multiple Backups and the backup of the sets will start.

New Set



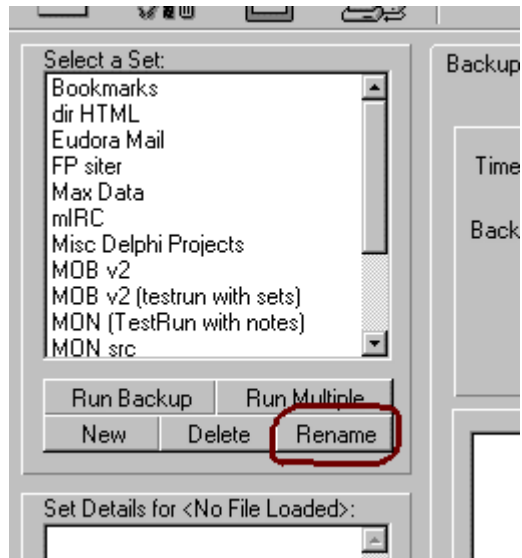
This will create a new set with the options specified in the default options. You will be prompted to enter a name for the new set to be created.

Delete Set



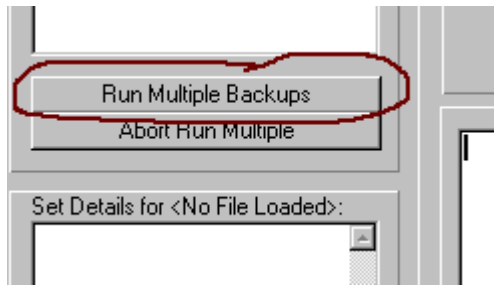
By pressing this button the loaded set will be deleted - you will have to confirm that you are sure that you want to delete the set before it is actually deleted.

Rename Set



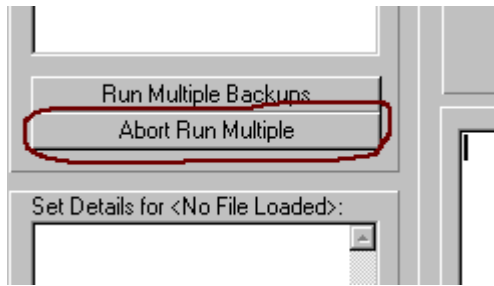
This button will rename the loaded set - a dialog-box asking for a new name will open.

Run Multiple Backups



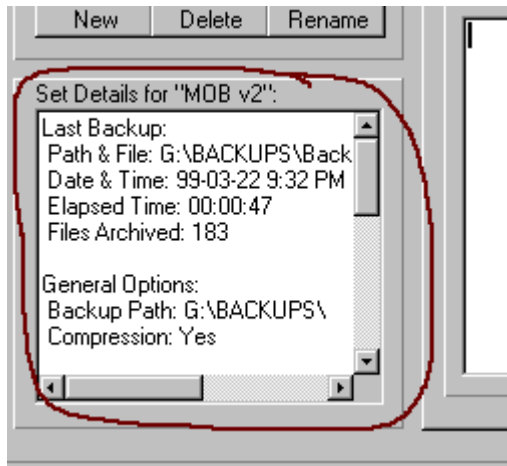
Press this button to start running backups for the selected sets.

Abort Multiple Backups



This button will abort and close the Run Multiple-mode.

Set Details



This listbox will show a lot of information about the set loaded,i.e. when the last backup was taken and at which date and time. You can also see all of the options specified in [Set Options](#).

File

In this menu you will find:

- New Set
- Rename Set
- Delete Set
- Edit Default Options
- Exit (this will close the program)

Tools

In this menu you will find:

- Recent Backups
- Check for New Version

Options

In this menu you will find:

- Program Options
- AutoSave
- Sort All Lists

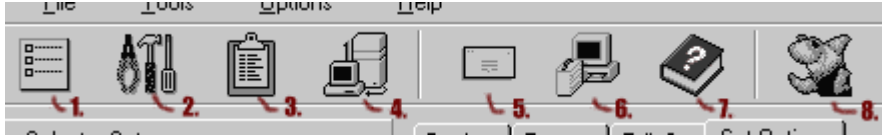
AutoSave

When this functions is turned on - all set-files is saved automatically. No need for you to think about saving! You can disable this and confirm manually.

Sort All Lists

This will sort all lists alphabetically throughout the program, i.e. the list of sets, files and folders in the set.

Toolbar



Here is shown a picture of the Main Toolbar used in MOB v2. On the Toolbar you will find buttons for faster navigation to the most important features of MOB v2. Below is a short explanation of these buttons.

When pressing 'Edit Default Options' (no. 1) the program will enter a special mode where you can set the default options for all new sets being created, i.e. if you always use the backup mode 'compression', 'include subfolder(s)' and the backup path 'F:\'. When a new set is created, the default options will be copied into the new set.

Pressing the second button ('Program Options') will open the window 'Program Options'.

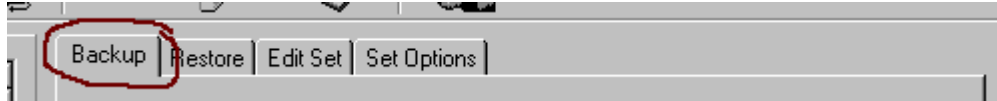
The third button will bring up the window 'Recent Backups'. If you wish to close this window, simply press this button once more.

When the button 'Check for New Version' (no. 4) is pressed, the program will connect to MOB's main site too see if there is a newer version is available for download. (You have to be connected to the internet for this to work)

Next is the Contact - About - Help section. 'Contact' will open a window with information about how to contact the author and a form where you can send an e-mail without leaving the program. 'About' will display information about the program.

... And the last button you will have to try for yourself ;-)

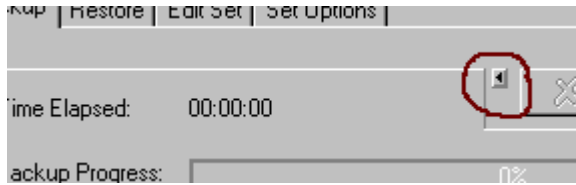
Tab Backup



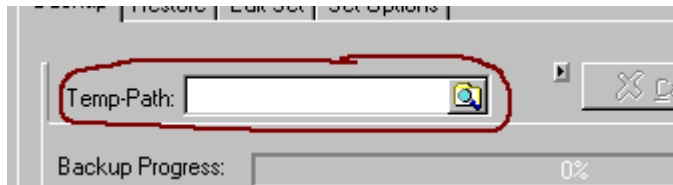
(Available after loading a set)

On this tab you start the backup. Just press the button named "Run" and your set will be backed up. You can also find the Temp-Path function here.

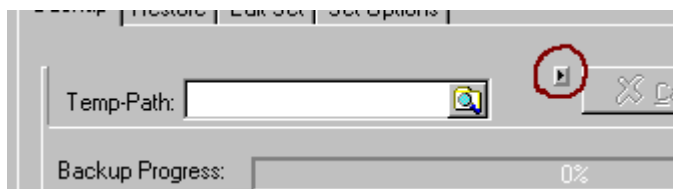
Temp-Path



By pressing this arrow that points to the left, the temp-path will be opened. Below you can see temp-path opened and ready to use.

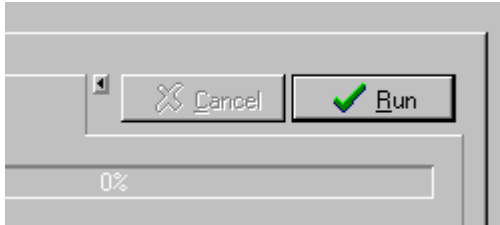


Type in or browse (press the button with the magnifying glass) to the path where you want the backup to be placed. It will override the backup path which you have set in "Set Options". No information for "Last Backup" will be saved and also no information for "Recent Backups".



Press the right-arrow to close temp-path. This is done automatically when the button "Run" if it has not already been done.

Run and Cancel



"Cancel" is disabled when no backup is in progress. If you want to abort the backup, just press "Cancel". The button "Run" will start the backup for the set loaded.

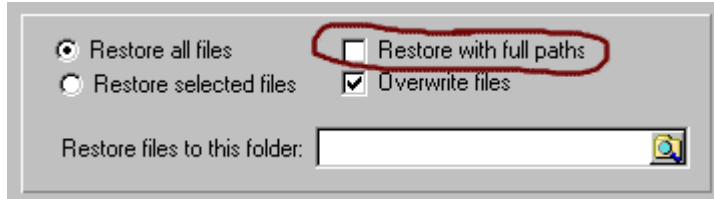
Tab Restore



(Available after loading a set)

On this tab you can restore files from a backup. With the button named "Winzip" you can start the program with the same name - if you wish to restore files from there.

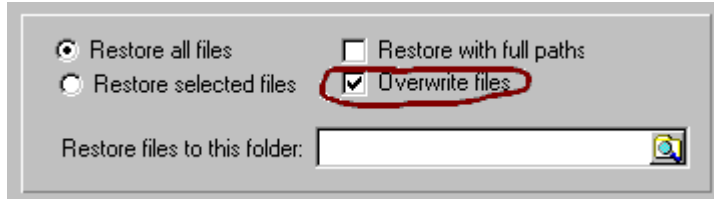
Restore With Full Paths



A screenshot of a file restoration dialog box. It features two radio buttons on the left: 'Restore all files' (selected) and 'Restore selected files'. To the right are two checkboxes: 'Restore with full paths' (unchecked and circled in red) and 'Overwrite files' (checked). At the bottom, there is a text label 'Restore files to this folder:' followed by an empty text input field and a magnifying glass icon.


This option will restore the directories (and sub-directories) when restoring files. You will need to select the option in 'Include Subfolder(s)' for this to work no directory information is saved.

Overwrite Files



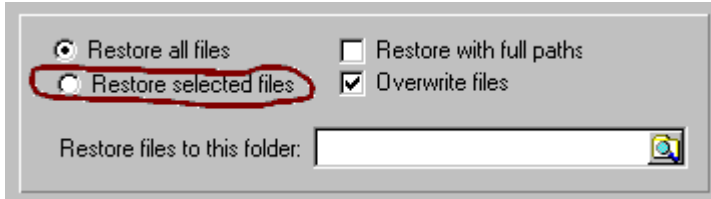
A screenshot of a file restoration dialog box. It features two radio buttons on the left: 'Restore all files' (selected) and 'Restore selected files'. To the right are two checkboxes: 'Restore with full paths' (unchecked) and 'Overwrite files' (checked). The 'Overwrite files' checkbox is circled in red. At the bottom, there is a text label 'Restore files to this folder:' followed by an empty text input field and a magnifying glass icon.

☒ Restore all files ☐ Restore with full paths
☐ Restore selected files ☒ Overwrite files

Restore files to this folder: 

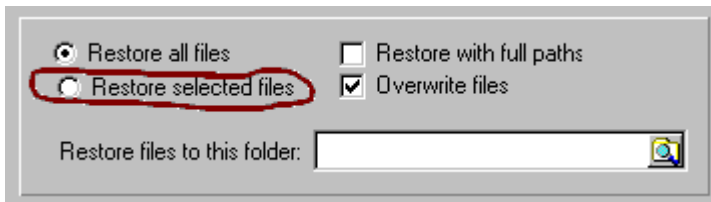
When selected all files will be overwritten without confirmation.

Restore Selected / All Files



A screenshot of a file restoration dialog box. It features two radio buttons: "Restore all files" (selected by default) and "Restore selected files" (highlighted with a red circle). To the right are two checkboxes: "Restore with full paths" (unchecked) and "Overwrite files" (checked). At the bottom, there is a text field labeled "Restore files to this folder:" followed by a search icon.

You have two options, "Restore all files" (as shown below) or "Restore selected files". "Restore all files" is set by default.



A second screenshot of the same file restoration dialog box. In this instance, the "Restore selected files" radio button is highlighted with a red circle, while "Restore all files" remains the default selection. The other options and the folder selection field are identical to the first screenshot.

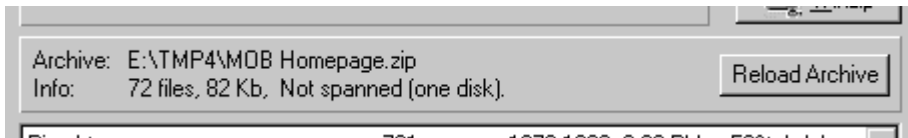
If you click in the 'Grid of files', the program will automatically choose "Restore selected files".

Button 'Winzip'



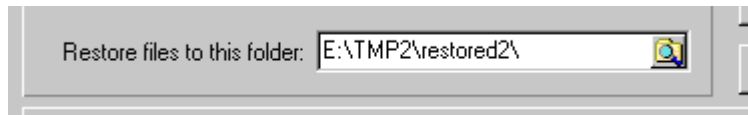
If you wish, you can restore files from winzip. You have specify where Winzip is located in 'Program Options'

Reload & Info about backup



Here you can reload the archive and also see information about it (number of files, file-size and spanned/not spanned).

Restore Path



Here you need to specify where the files will be restored to. Press the button at the right (browse-symbol) to open a dialog which you can browse to your preferred restore path.

Grid of files

Info: /2 files, 82 Kb, Not spanned (one disk).						
Pine.htm	791	1879	1999	9:38 PM	58%	Webser
preload.htm	1539	3663	1999	9:38 PM	58%	Webser
preview.htm	1865	5073	1999	10:23 PM	63%	Webser
preview1.htm	1251	3227	1999	10:17 PM	61%	Webser
preview2.htm	1326	3351	1999	10:24 PM	60%	Webser
preview3.htm	1249	3248	1999	10:24 PM	62%	Webser
preview4.htm	1301	3344	1999	10:21 PM	61%	Webser
preview5.htm	1296	3304	1999	10:22 PM	61%	Webser
Ride.htm	737	1659	1999	9:38 PM	56%	Webser
River.htm	779	1790	1999	9:38 PM	56%	Webser

In this section you can see what files that have been backed up. Information about each file is also displayed (compression ratio, filesize, date, path etc.). In the picture above there are 6 files selected to be restored. Read the topic '[Restore Selected / All Files](#)'.

Tab Edit Set

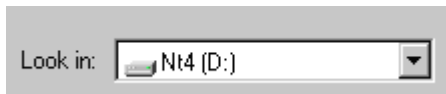


(Available after loading a set or after creating a new set)

On this tab you add which files and folders to backup. In version 2.0 you can also see and add special folders (hidden/system), one example is the favorites folder.

Navigating directories

This part is almost designed as a standard win9x dialog-box.



Select drive/directory in the combobox above and in the box below it you can see a list of files and directories (as shown below). If you want to select multiple directories/files, hold down CTRL and select the files/dirs that you want to be included in the backup.

Name	Size(Bytes)	Type	Modified	Attrib...
KPCMS	0	File Folder	05/16/1999 1...	
Program Files	0	File Folder	03/31/1999 1...	
RECYCLED	0	Recycle Bin	03/31/1999 1...	HS
TEMP	0	File Folder	03/31/1999 1...	
WINNT4	0	File Folder	03/31/1999 1...	
pagefile.sys	157286400	System file	08/02/1999 1...	A

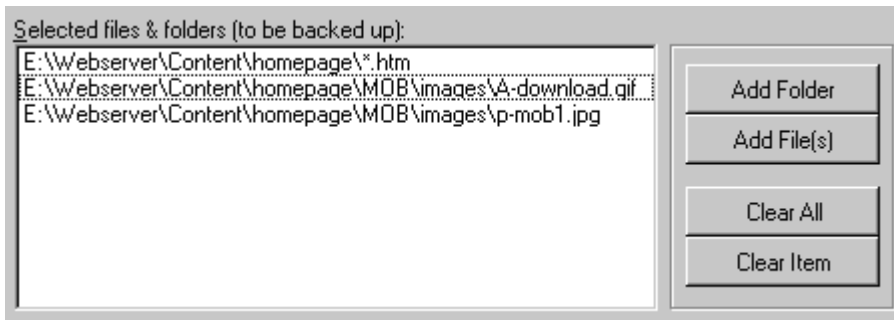
In the picture below you can go the previous directory/drive by clicking the button (no.1). Choose different viewstyles (no. 2), default is 'Details'. You can also specify a filter (no. 3). Select an pre-defined filter in the combobox or write your own filter.



The following examples (in *italic*) are valid as a filter: *i*.** (view all files beginning with i), **.t** (view all files with an extension that begins with a t), *work*.w** (view all files that has 'work' in the filename and with a 'w' as an extension).

Selected files & folders

In this box shown in the picture below, you can see all the files and directories selected to be backed up.

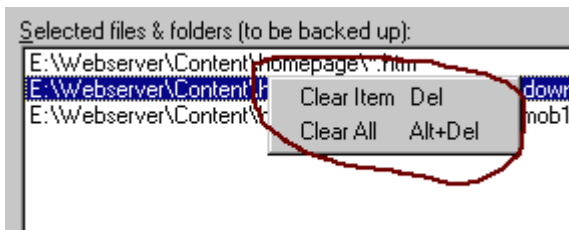


To add a file or directory simply select it from the file-box and drag it to 'Selected files & folders'. You can of course add multiply files and directories at the same time.

Note: The selected filter will be used if you add a directory. Example: If you have selected the filter *.txt and you add the directory 'c:\documents' the program will show: 'c:\documents*.txt'. Read more about the usage of filters in '[Navigating directories](#)'.

If you want to, you can use the buttons at the right to add files and directories.

To clear an item in the set (file or folder), select it from the list and press the button 'Clear Item'. You can also click the right mouse-button to bring up a popup menu (shown below).



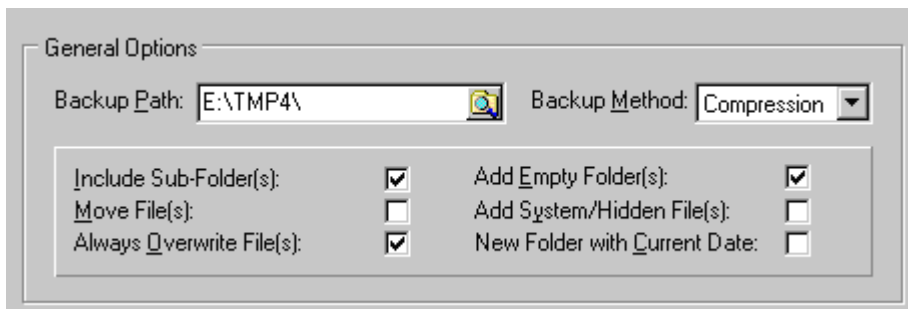
Tab Set Options




(Available after loading a set or after creating a new set)

On this tab you can edit additional options for the set. You can choose backup method for example.

General Options



General Options

Backup Path: E:\TMP4\  Backup Method: Compression ▼

Include Sub-Folder(s):	<input checked="" type="checkbox"/>	Add Empty Folder(s):	<input checked="" type="checkbox"/>
Move File(s):	<input type="checkbox"/>	Add System/Hidden File(s):	<input type="checkbox"/>
Always Overwrite File(s):	<input checked="" type="checkbox"/>	New Folder with Current Date:	<input type="checkbox"/>

These options apply for both backup methods. *Tip; You can set all these options in 'Edit Default Options' and they will be copied into a new set.*

Backup Path :-

This is where your backup is placed. Please note that if "New folder with current date" is selected, MOB will create this *new folder as a sub-folder to 'Backup path'* ! Example: If you specify 'E:\TMP4\' as a backup path, then when the backup is run this new folder will be created: 'E:\TMP4\<current date>'

Backup Method :-

MOB has two ways to run backup; 'Compression' or 'Copy Only'. When Compression is selected, the backup will be created as a standard zip-archive. This type will also take less space on the destination media. 'Compression' is the default backup method. If you want a more simpler backup, then select 'Copy Only' - the file(s) & folder(s) will be copied, no compression, takes up more disk-space.

Include Sub-Folder(s) :-

Saves and backs up sub-folders. You must select this if you have sub-folders that you wish to include in your backup. This option is set as default.

Move File(s) :-

Moves the file(s) to Backup Path and deletes the file(s) from the source. *Warning: This should only be used by experienced computer users.* The default value is *not selected*.

Always Overwrite :-

Overwrites file(s) without prompting. In 'Compression' this function means that if an archive exists, it will be overwritten. For 'Copy Only' *all file(s) and folder(s)* will be overwritten at the destination ('Backup Path') without any confirmation. This option is set as default.

Add Empty Folder(s) :-

This will backup empty folder(s). The default value is *not selected*.

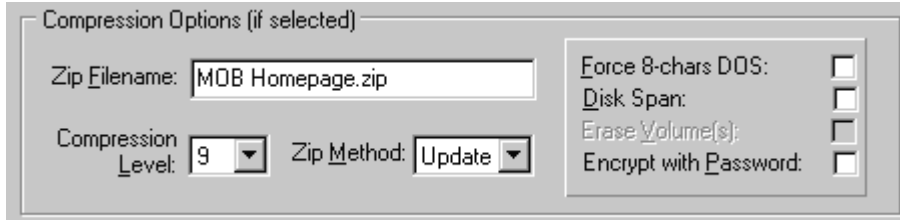
Add System/Hidden File(s) :-

Please note that this also applies for folder(s) and not only file(s). If this option is set (default is selected) all files/folders with the attribute system/hidden (and even readonly) will be added to the archive. If it has not been set, these files will not be backed up.

New Folder with Current Date :-

A new sub-folder to 'Backup Path' is created with today's date.

Compression Options



Compression Options (if selected)

Zip Filename: MOB Homepage.zip

Compression Level: 9 Zip Method: Update

Force 8-chars DOS: ☐

Disk Span: ☐

Erase Volume(s): ☐

Encrypt with Password: ☐

These options apply for the backup method 'Compression'. *Tip; You can set all these options in 'Edit Default Options' and they will be copied into a new set.*

Zip Filename :-

Filename of your zipfile, the archive will be created in 'Backup Path'.

Compression Level :-

Compression level - 0 is none (store) and 9 is maximum. Level 9 is default.

Zip Method :-

New to 2.0; 'Add' will create a new Archive and add all files. 'Update' will only update the changed files and add new files. If no archive exists, then 'Update' will switch to 'Add'. The default value is 'Add'.

Force 8-chars DOS :-

All files will be truncated into 8 characters. Default is not selected.

Disk Span :-

New to 2.0; If the disk-space on your backup media is not enough to hold the entire backup, Disk Span will allow you to continue on a new volume, you will be prompted to insert disk(s). Default is not selected.

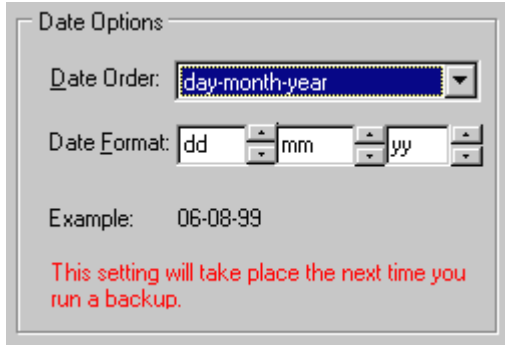
Erase Volume(s) :-

New to 2.0; If 'Disk Span' is selected then you have the option to erase the disk(s) (ie. quick format). The default value is not selected.

Encrypt with Password :-

New to 2.0; You now have the options to encrypt your backup using a password to "lock it". The same password will then have to be used to unlock the archive when it is being restored. The default value is not selected.

Date Options

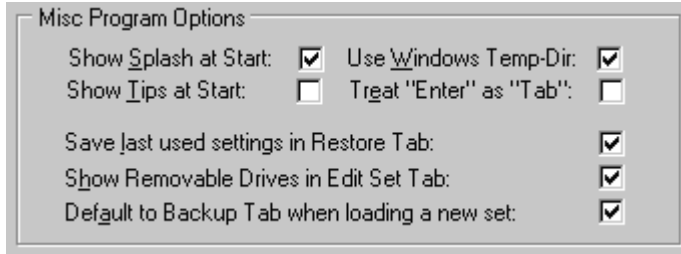


The image shows a 'Date Options' dialog box. It has a title bar 'Date Options'. Inside, there is a 'Date Order:' label followed by a dropdown menu showing 'day-month-year'. Below that is a 'Date Format:' label followed by three input fields: 'dd', 'mm', and 'yy', each with a small up/down arrow to its right. Below these fields is an 'Example:' label followed by the text '06-08-99'. At the bottom, there is a red text message: 'This setting will take place the next time you run a backup.'

Here you can specify which type of date format you want to use. Look in the examples below. There are three types of date order: day-month-year, year-month-day and month-day-year.

08-08-99
1999-August-08
99-08-08
08-Aug-99
Aug-08-1999
1999-08-08

Misc Options



Show Splash at Start

When this option is set, a splashscreen with MOB v2's logo will be displayed before the program starts.

Show Tips at Start

This option will bring up the tips-screen when the program starts.

Use Windows Temp-Dir

If this option is set all temporary files are placed in the default windows temp-directory. If you don't want to use this, all temporary files are placed where 'Backup Path' is set.

Treat "Enter" as "Tab"

The program can jump to the next control (like the key "Tab") when you press "Enter". Select this option if you want to use it.

Save last used settings in Restore Tab

MOB can save the settings that you use in the Restore Tab. The settings saved are: 'Restore with full paths', 'Overwrite files' and 'Restore Path'. When you select the Restore Tab the next time these settings will be loaded.

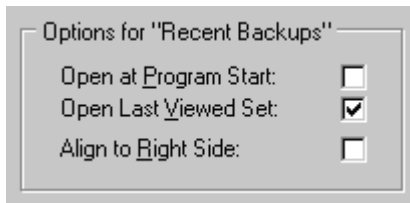
Show Removable Drives in Edit Set Tab

In the file-boxes in the tab Edit Set (see 'Navigating directories') you can choose if you want to see removable drives (i.e. floppy, cdrom, zip/jaz).

Default to Backup Tab when loading a new set

You can set this option if you always want the Backup Tab to be displayed when a set is loaded. If it has not been set the program will display the last opened tab.

Options for "Recent Backups"



Open at Program Start

When set, the window "Recent Backups" will be shown when MOB is started.

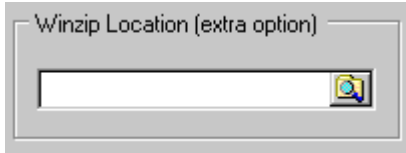
Open Last Viewed Set

Just like it says.. "Recent Backups" will open the set that was last viewed,

Align to Right Side

When "Recent Backups" is shown you can choose if you want it to align to the right side of the main window of MOB.

Winzip Location

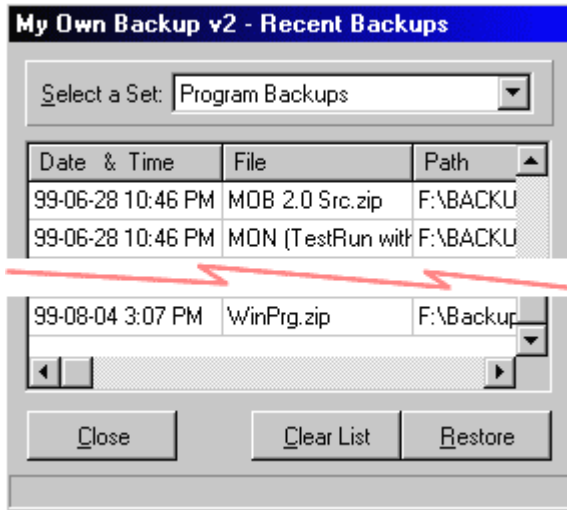


You can restore files using Winzip instead of the Restore Tab. For this to work you will have to set the path where Winzip is located within your system.

Install/Un-Install Shell Ext.

Please read the topic '[Shell Extensions](#)' for more info.

Recent Backups



(The actual window is much higher than shown here)

This is the place to go if you want to look at a history of the backups that's been taken. There is one special set (not to be mixed up with a backup set) called "Program Backups" - it will show all backups that's been taken, regardless of which backup set that was run.

When you want to restore files from an older backup, select that row in the grid and press the button "Restore".

You will be taken to the Restore Tab in a special mode, then restore files as you normally would do.

By pressing the "Clear List" button you can clear the of recent backups for the selected set shown.

Command Line Parameters

MOB v2 comes with a fully functional command line support feature. Below is the syntax explained with a few examples. Where a text has been closed by two []-chars, it means that you should write your information - no []-chars.

Note 1:

Observe the syntax, the order of commands and also spaces between commands.

Note 2:

It needs to say something about the name of the set. If you have a set named: My Documents (observe the space between), you must write the name between two "-chars (one at the start and one at the end). Like this: "My Documents" Otherwise it will result in an error. You don't need to type in the extension ('.mob') after each name, the program will automatically do this for you.

Note 3:

If the program generates an error in the command line parameters, it will abort - no exceptions made. An error-message is shown in the status-bar of the main window.

Backup

You can run a backup (with or without temp-path), the syntax is:

```
MOBv2.exe -b [name of set]
```

If you want to backup to a temp-path, the syntax is:

```
MOBv2.exe -b [name of set] -t [temp-path]
```

Restore

You can also restore files to a specified directory, with or without full paths. The syntax is:

```
MOBv2.exe -r [name of set] [restore-path] -p
```

The command '-p' will set the option "restore with full path(s)", all options except this one is required.

Backup in Run Multiple-mode

If you have several sets that you want to backup, use the command '-rm'. You can't use the function Temp-path with this command. There is no limit of the number of sets to be backed up. The syntax is:

```
MOBv2.exe -rm [name of set] [name of set] [name of set .. and so on .. no limit of the sets to backup]
```

Shell Extensions

You have the option to create file associations for all files that MOB creates. Example: Double click on a '.mob'-file (a backup set) and the program will open up with the set loaded. When you start up MOB for the very first time, you will get a question if you want to install shell extensions. You can also both install and uninstall the shell extensions from within MOB itself using a button in the program options.

Logfiles

With version 2.1 of MOB v2 you have the possibility to use Logfiles to help you. There are two different logfiles that can be created, Error Log and Backup Log. The Error Log will save any error-message that MOB generates and results from backups are saved into the Backup Log.

You can enable/disable the logfiles from the Tools menu, a checkmark (a "v"-char) will show if a logfile is enabled and written to. The Error Log is enabled as default.

Note; The actual logfiles are placed in the program directory.

9 steps to a complete backup

1. The whole idea of MOB is based on sets, you can have how as many backup sets as you want,

i.e. one set for all your documents, one set for your pictures. Create a new set by pressing the button 'New Set'. Then enter a name for your new set when prompted.

2. Now you have to specify which files/folders that should be backed up. Select the tab 'Edit Set'. Read

the topic 'Navigating directories' for information on how to select the files that you want to backup. After

that read the topic 'Selected files & folders' on how to add files/folders to your set.

3. Next select the tab 'Set Options'. You need to decide if you want to use 'Compression' or 'Copy Only'

as a backup method. The default selected backup method is 'Compression' (read more about this in

'General Options').

4. Now you must specify where the backup is placed. Write in the path in the edit-box next to 'Backup Path'

or press the browse-symbol to browse to your backup path. Read more about the options in 'General Options'.

5. If you have selected 'Compression' you will now have to enter a filename for the archive that to be created.

Type in the filename in the box next to 'Zip Filename'. (read more about these options in 'Compression Options').

6. Now you are ready to run the backup! The changes you have made will automatically be saved if the

option 'AutoSave' is selected, otherwise you will have to confirm if you want to save or not (I recommend that you save your changes.. ;-)).

7. Select the tab 'Backup' and press the button named 'Run' to start the backup.

8. The backup should now be on its way and you can follow its progress by looking at the meter 'Backup

Process' and by the messages to see how it's coming along when it's finished.

9. Congratulation! You should now see the message "Backup Successful!" in the message-box. You are

now protected against data-loss!

