

Help File for Panorama 32

This help file contains the full documentation for the version of **Panorama 32** with which it was packaged. There is no written documentation, but you should be able to find all that you need to begin work with Panorama 32 in here.

When you're using Panorama 32's dialog boxes, you can get help on that dialog box by pressing F1 or clicking the "Help" button, if one is available.

Introduction

This section offers general information on Panorama 32, tells you where you can get the latest version, and answers licensing questions

Procedures

This section tells you how to go about doing basic things in Panorama 32, and explains some of Panorama 32's features.

Commands

This section gives you information on each of Panorama 32's menu commands.

Keyboard Commands

This section defines the keyboard equivalents for all of Panorama 32's functions.

Panorama 32 is Copyright ©1996, 1997 by Shaun Ivory

Introduction to Panorama 32

Legal Disclaimer

Panorama 32 is supplied on an as-is basis. The author offers no warranty of its fitness for any purpose whatsoever, and accepts no liability whatsoever for any loss or damage incurred by its use. Period. Here is the [license](#)

Panorama 32 is not a supported product. Shaun Ivory accepts no commitment or liability to address any problems that may be encountered in using it; however, Shaun is always interested to hear about any bugs or deficiencies.

What is Panorama 32?

Panorama 32 is the finest **Free** Microsoft Windows 95 and WindowsNT wallpaper manager. It has the following features:

- Changes your wallpaper at user-configurable intervals from every second up to every 24 hours
- Runs in the explorer's system tray, so it doesn't clutter the Taskbar!
- Seamless support for JPEG, GIF and PNG files!
- The main window can be configured to stay on top of all the other windows
- The wallpaper files may be changed in order, or randomly
- You can choose to automatically tile small bitmaps (i.e. width or height less than half that of the screen)
- Automatically searches your hard disk for [image files](#).

Where can I get the latest version?

The current home of this program is **<http://www.ivory.org/free.html>**.

This is subject to change, however. An Internet search for Wallpaper and Panorama will probably yield success if the listed WWW address is vacant.

Acknowledgements

The people listed in the "credits" dialog box in Panorama 32: **Chris Rosa, Donna Gladhill and Ana Carder**, all helped by pointing out bugs and suggesting improvements.

ClImage C++ Class Library: Copyright (c) 1995, Alejandro Aguilar Sierra <asierra@servidor.unam.mx>

The JPEG code was supplied by the work of the Independent JPEG Group. The copyright reads as follows: Copyright (C) 1991-1996, Thomas G. Lane.

The PNG code was supplied by **libpng**. The **libpng** copyright reads as follows:

Copyright (c) 1995, 1996 Guy Eric Schalnat, Group 42, Inc.

Contributing Authors:

Andreas Dilger

Dave Martindale

Guy Eric Schalnat

Paul Schmidt

Tim Wegner

zlib is Copyright (c) 1995-1996 Jean-loup Gailly and Mark Adler

Much of the text editing was done with Alan Phillips' *Programmer's File Editor*.

<http://www.lancs.ac.uk/people/cpaap/pfe/>

Using And Distributing Panorama 32

Panorama 32 may be freely used for any purpose. You may use it privately or in the course of your work; there is no fee, and no registration is required. You may distribute it to anyone, and you may place it on

any archive or bulletin board system. You may not charge anyone for it other than a reasonable fee to cover your distribution costs. Normally, you should distribute Panorama 32 in the form as supplied by the author; however, you may repackage it to suit the conventions and needs of an archive or bulletin board system. Panorama 32 may not be distributed as part of any commercial product without a prior licence agreement.

Panorama 32 may be reviewed for any publication, whether in hard copy or electronic form, without the author's prior permission.

Procedures

Running Panorama 32

Configuring Panorama 32

Adding Files

Configuring Panorama 32

There are several way you can change the behavior and appearance of Panorama 32.

Change Interval

Options|Preferences, Options Tab

The change interval is fully configurable. You can change the length of time in the Preferences property page.

Icon Location

Options|Preferences, View Tab

You can cause Panorama 32 to put a small icon in the "System Tray" area when it is minimized, thus conserving space on the Task Bar.

Running Panorama 32

You can run Panorama 32 in one of several ways:

1. From the Start Menu or the File Menu in Program Manager, select Run and type:
d:\path\panorama.exe
where d: is the drive and path is the directory in which the panorama.exe file can be found
2. Select the Panorama 32 icon from the Start Menu or Program Manager, where it was placed during installation
3. Place Panorama 32 in the Startup group, so it always runs when you restart your computer

Commands

Most of Panorama 32's functions are accessed through the menu bar at the top, or the popup menus that appear when the tray icon is clicked or the right mouse button is clicked inside the program.

The File Menu

The Edit Menu

The Options Menu

The View Menu

The Help Menu

Command Line Options

License

Panorama is "unsupported freeware."

You may not modify, translate, reverse engineer, decompile, disassemble (except to the extent applicable laws specifically prohibit such restriction), or create derivative works based on the Software, or remove any proprietary notices or labels on the Software.

Title, ownership rights, and intellectual property rights in and to the Software shall remain with Shaun Ivory. The Software is protected by the copyright laws of the United States and international copyright treaties.

Unless otherwise provided by written agreement with Shaun Ivory, this software is provided "as is" without warranty of any kind, expressed or implied, including, but not limited to, the implied warranties of merchantability of fitness for a particular purpose. The entire risk as to the quality and performance of the Software is borne by you. Should the Software prove defective, you and not Shaun Ivory assume the entire cost of any service and repair. This disclaimer of warranty constitutes an essential part of the agreement. SOME STATES DO NOT ALLOW EXCLUSIONS OF AN IMPLIED WARRANTY, SO THIS DISCLAIMER MAY NOT APPLY TO YOU AND YOU MAY HAVE OTHER LEGAL RIGHTS THAT VARY FROM STATE TO STATE OR BY JURISDICTION.

While reasonable efforts have been made to assure the accuracy of this software, in no event shall Shaun Ivory be liable for direct, indirect, special, incidental, or consequential damages resulting from any defect in this software.

This license will terminate automatically if you fail to comply with the limitations described above. On termination, you must destroy all copies of the Software.

What do you want for nothing?

Shaun Ivory

shaun@ivory.org

File Menu

New

Keyboard shortcut: **Ctrl+N**

Start a new wallpaper list.

Open...

Keyboard shortcut: **Ctrl+O**

Open an existing wallpaper list.

Save

Keyboard shortcut: **Ctrl+S**

Save the currently open wallpaper list file.

Set as wallpaper

Keyboard shortcut: **Enter**

Use the currently selected wallpaper file as wallpaper.

Scan disks

Search your disks for image files. See Scan Disks

Next wallpaper file

Keyboard shortcut: **Ctrl+X**

Advance to the next wallpaper in the wallpaper list.

Previous wallpaper file

Keyboard shortcut: **Ctrl+P**

Return to the previous wallpaper in the wallpaper list. Note that the previous wallpaper file is non-existent in Random switch mode.

Exit

Keyboard shortcut: **Alt+F4**

Exit Panorama 32.

Edit Menu

Remove files

Keyboard shortcut: **Del**

Remove files from the current wallpaper list.

Delete files

Keyboard shortcut: **Ctrl+Del**

Delete files from the list **and from your local storage**.

Add files

Keyboard shortcut: **Insert**

Add files to the current wallpaper list. See [Adding Files](#).

Properties

Keyboard shortcut: **Alt+Enter**

Display and change the properties of the currently selected wallpaper file. See [Properties](#)

Move up

Keyboard shortcut: **Alt+Up**

Move the current wallpaper file up in the list

Move down

Keyboard shortcut: **Alt+Down**

Move the current wallpaper file down in the list

Edit bitmap file

Keyboard shortcut: **Ctrl+Enter**

Edit the currently selected wallpaper file in the paint program associated with the image type

Clear wallpaper

Keyboard shortcut: **Ctrl+R**

Remove the current wallpaper, replacing it with a blank background.

Edit Menu;Preferences;Suspend;Font

Preferences

Display and change the behavior and appearance of Panorama 32. See [Preferences](#).

Suspend

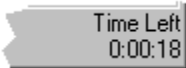
Keyboard shortcut: **Ctrl+U**

Stop changing wallpaper temporarily.

When Panorama 32 is suspended, the time-left portion of the status area looks like this:



When Panorama 32 is *not* suspended, the time-left portion of status area looks like this:



Font

Keyboard shortcut: **Ctrl+F**

Change the font used to display the wallpaper file list.

View Menu

Toolbar

Toggle display of the toolbar. When the toolbar is displayed, a check-mark will appear next to this menu item

Tooltips

Toggle display of tooltips. Tooltips give short descriptions of the program's controls when the mouse cursor lingers over a control for a few seconds. When tooltips are displayed, a check-mark will appear next to this menu item

Hide desktop icons

Keyboard shortcut: Ctrl+I

When Panorama 32 operates under Windows 95 or Windows NT 4.0, you can temporarily hide the desktop icons, to avoid disturbing your view of your lovely wallpaper.

Show full pathname in list

Keyboard shortcut: Ctrl+D

Show the entire pathname of the files in the file list, including their path names.

Sort

Ascending, full pathname: Sort the files in the list in *ascending* order, using the entire path, including drive and directory.

Descending, full pathname: Sort the files in the list in *descending* order, using the entire path, including drive and directory.

Ascending, filename only: Sort the files in the list in *ascending* order, using the only the filename.

Descending, filename only: Sort the files in the list in *descending* order, using the only the filename.

Refresh list

Keyboard shortcut: F5

This command will cause all files in the current file list to be scanned immediately, to ensure that all the files exist and that Panorama has the correct values, such as Width, Height, Color Depth.

Help Menu

Contents

Keyboard shortcut: **F1**

Display the table of contents of the Help system.

About

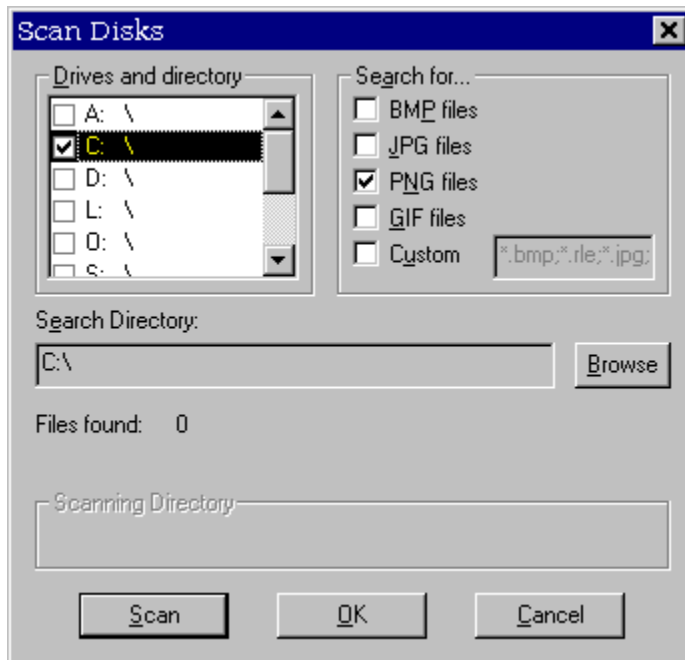
Display program, environment and copyright information.

Adding Files

There are several ways to add wallpaper files to the current filelist:

1. **Edit|Add files.** To add multiple files, select the files by holding down the keyboard Shift or Control key, while selecting files with the mouse.
2. **Drag and drop.** To add files using this method, open Explorer or your file manager, select the file or files, drag them to the Panorama 32 window and drop them.
3. **File|Scan disks.** This method allows you to add all the image files on selected hard disks at once.

Scan Disks



This dialog will allow you to search any or all of your hard disks and network disks to locate supported image files to add to the wallpaper file list.

Drive and directory

List of drives to search and the directories to start the recursive search from. To change the start directory, double-click on the drive to change.

BMP files

If this check-box is selected, include files with the extensions **BMP** or **RLE**.

JPG files

If this check-box is selected, include files with the extensions **JPG**, **JPE** or **JPEG**.

PNG files

If this check-box is selected, include files with the extension **PNG**.

GIF files

If this check-box is selected, include files with the extensions **GIF**.

Custom

If this check-box is selected, files with the extensions listed in the edit box to the right will be included in the scan. By default, the edit control will contain the following extensions: ***.BMP**, ***.RLE**, ***.PNG**, ***.GIF**, ***.JPG**, ***.JPE** and ***.JPEG**. Note that all extensions listed in this box must be separated by semi-colons.

Search directory

The search start directory for the currently selected drive.

Browse

Pick a search start directory for the currently selected drive.

Scanning Directory

Display the directory currently being scanned.

Scan

Begin the search.

Stop

End the search.

Information



Filename

Displays the filename of the currently selected wallpaper file.

Size

Displays the size, in bytes, of the currently selected wallpaper file.

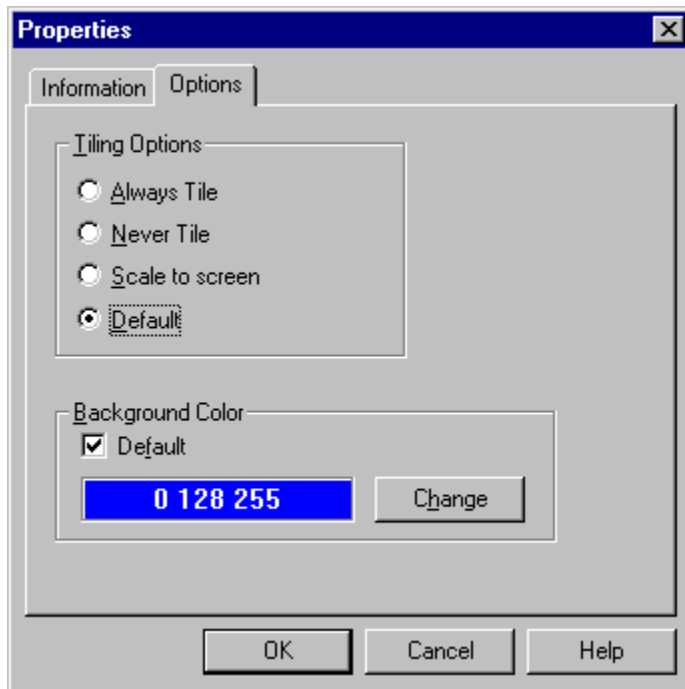
Resolution

Displays the dimensions, in pixels, and the bit-depth, or color resolution of the currently selected wallpaper file.

Thumbnail

Displays a thumbnail of the currently selected wallpaper file.

Options



Tiling Options

Always Tile

Always tile the currently selected wallpaper file, regardless of the global setting for tiling options

Never Tile

Never tile the currently selected wallpaper file, regardless of the global setting for tiling options.

Scale to screen * †

Scale the selected image to the full size of the screen, shrinking or stretching as necessary.

Default

If this is selected, the decision to tile or scale this wallpaper will be based on the global tiling settings found in the Preferences dialog.

Background Color

Default

Use the default background color

Change

Change the background color to be used with this wallpaper file

* This feature is not available on Windows NT 3.51

† This feature is only available on Windows 95 if you have installed **Microsoft Plus!**. As an alternative, you can download the following file using FTP:

<ftp://ftp.microsoft.com/developr/drg/truetype/w95gray.exe>.

The author does not offer support for nor guarantee the existence of this product.

Preferences

These options let you change the behavior and appearance of Panorama 32:

View

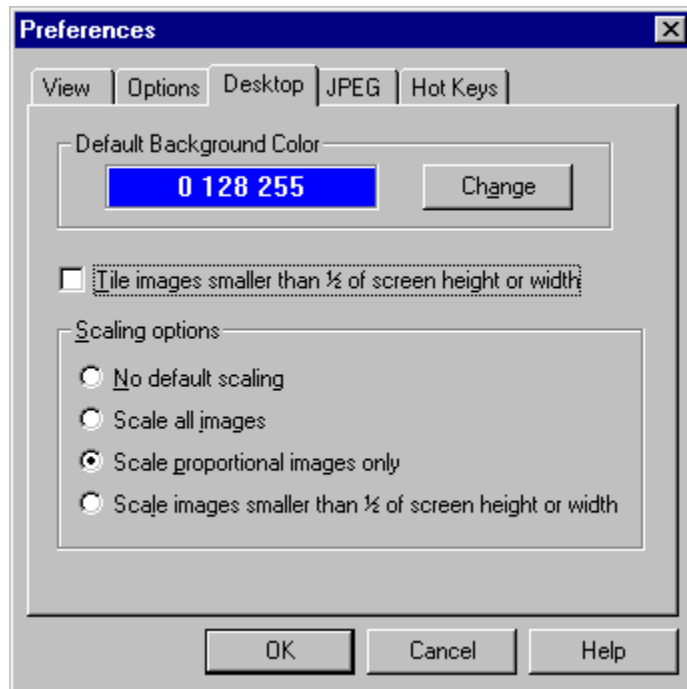
Options

Desktop

JPEG

Hot-Keys

Options



Default Background Color

Set the default background color for all wallpaper files. This option can be overridden for individual wallpaper files in the [Edit|Properties](#) dialog

Tile images smaller than 1/2 of screen height or width

Automatically tile images whose size is less than or equal one-half the size of the screen. This option can be overridden for individual wallpaper files in the [Edit|Properties](#) dialog

Scaling options * †

Scaling an image causes the image to exactly fill the screen. These options can be overridden for individual wallpaper files in the [Edit|Properties](#) dialog.

No default scaling

No automatic scaling will take place.

Scale all images

Scale all images, regardless of size.

Scale proportional images only

Automatically scale images whose aspect ratio (Width:Height) matches (*or nearly matches*) the aspect ratio of the screen.

Scale images smaller than 1/2 of screen height or width

Automatically scale images whose size is less than or equal one-half the size of the screen.

Note: If an image is a candidate for both automatic tiling and automatic scaling, it will be tiled.

* This feature is not available on Windows NT 3.51

† This feature is only available on Windows 95 if you have installed **Microsoft Plus!**. As an alternative, you can download the following file using FTP:

<ftp://ftp.microsoft.com/developr/drg/truetype/w95gray.exe>.

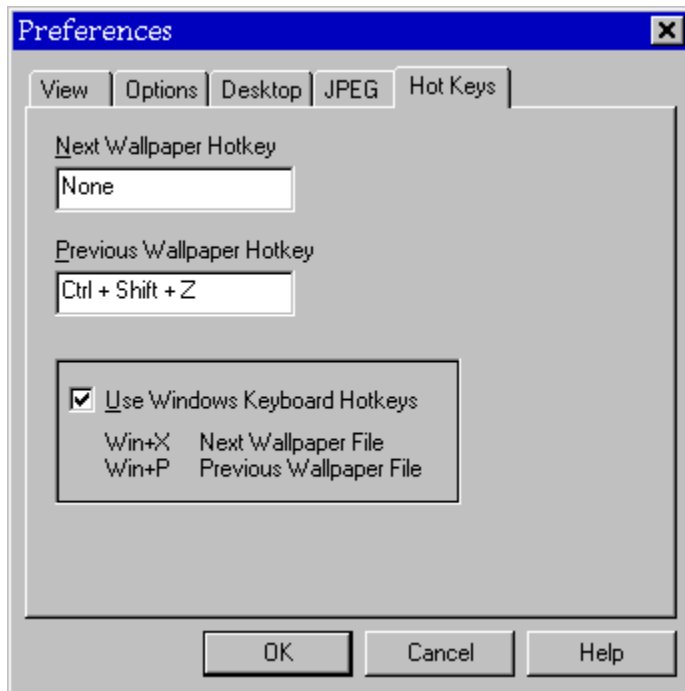
The author does not offer support for nor guarantee the existence of this product.

Command Line Options

The following command line options are available:

- N** Select next wallpaper in sequence, then immediately exit.
- X** This switch will provide 4 new options in the Options|Preferences|View property page. These trouble-shooting options allow you to turn off the following features, in the unlikely event they are causing problems on your computer: the bitmap displayed on the File menu, the gradient on the program's title bar, the bitmap background in the "About..." dialog, and the display of menu hints in the title bar.

Hot-Key Preferences



This dialog will allow you to change the hot-keys associated with Panorama 32

Next Wallpaper Hotkey

The *global* hot-key combination which will cause Panorama 32 to advance to the next file in the wallpaper sequence.

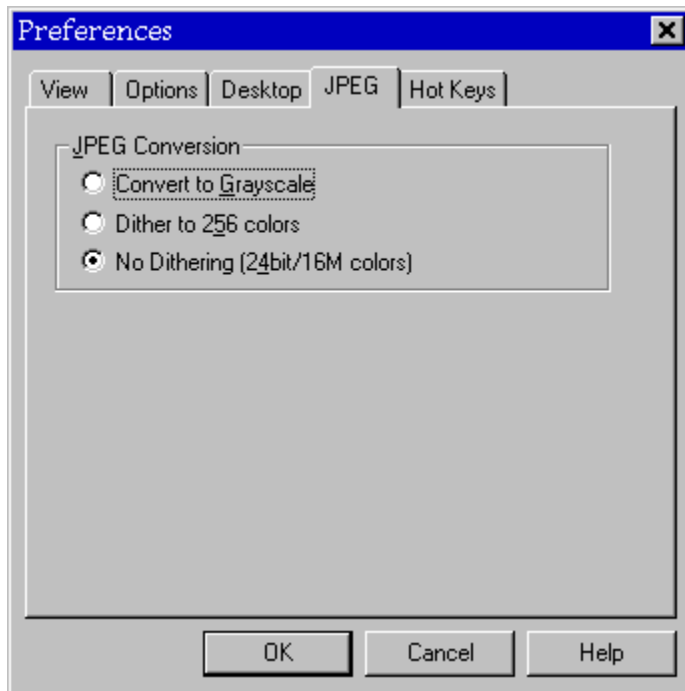
Previous Wallpaper Hotkey

The *global* hot-key combination which will cause Panorama 32 to return to the previous file in the wallpaper sequence.

Use Windows Keyboard Hotkeys

If this option is selected, the key combinations Win+X and Win+P may be used to change the wallpaper. The Win key is only available on computers whose keyboards have a key labeled with the Windows symbol.

JPEG Preferences



This dialog box will allow you to control the conversion of JPG files to Windows-compatible BMP files.

Convert to Grayscale

Convert all JPG images to grayscale images.

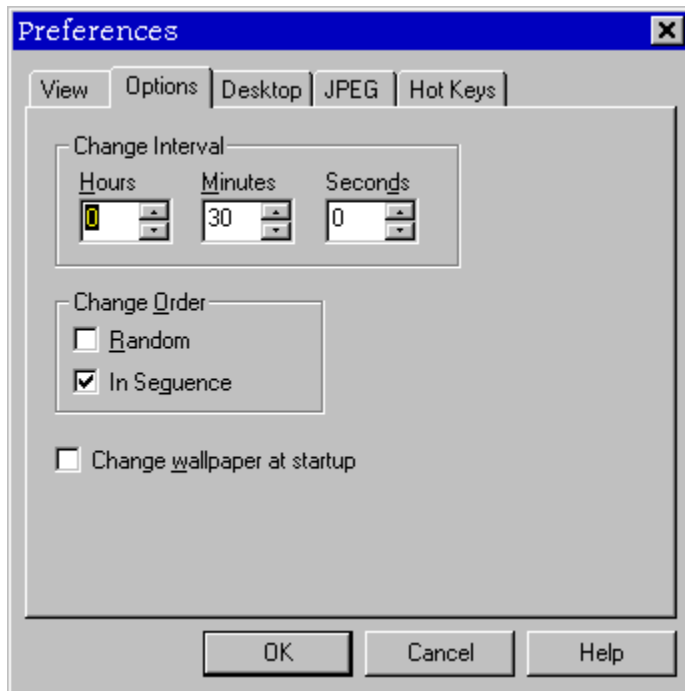
Dither to 256 colors

Reduce colors to 256 by dithering.

No Dithering

Display JPG as-is, with no color reduction.

Options



Change Interval

Set the amount of time between wallpaper changes. Minimum is 1 second, maximum is 23 hours, 59 minutes, 59 seconds.

Change Order

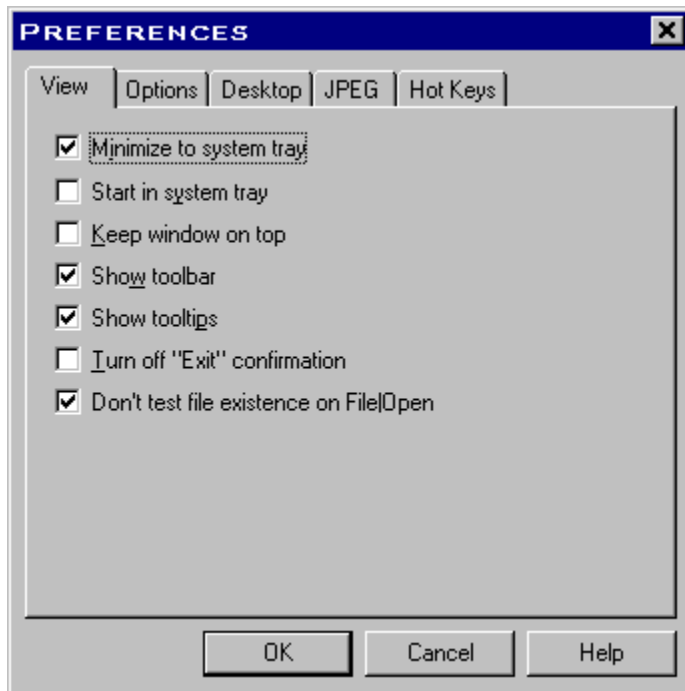
Random: Change wallpaper in random order.

In Sequence: Change wallpaper in the order in which they appear in the file list.

Change wallpaper at startup

Change the wallpaper each time Panorama 32 is started.

View Preferences



Minimize to system tray

When Panorama 32 is minimized, a small icon will be displayed in the system tray area, as follows:



Start in system tray

Start Panorama 32 in the system tray

Keep window on top

Always keep the Panorama 32 no top of all other windows

Show toolbar

Toggle display of the toolbar in the main window.

Show tooltips

Toggle display of tooltips. Tooltips give short descriptions of the program's controls when the mouse cursor lingers over a control for a few seconds.

Turn off "Exit" confirmation

Turn off the annoying message that asks you whether or not you *really* want to quit.

Don't test file existence of File|Open

Don't check for the existence of each file when opening a wallpaper list. This will speed the loading time for very large lists.

Properties

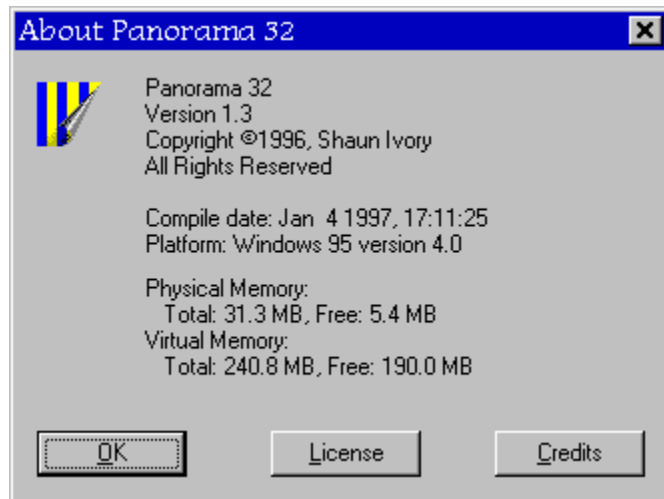
The Properties dialog allows you to view and change properties of the selected wallpaper file.

These are the options available:

Information

Options

About Panorama 32



This dialog box offers information about Panorama 32 and the operating system on which it is running.

Version

The version of this release.

Compile date

Actual compile date.

Platform

Which platform we are on.

Memory

How much memory is free.

Credits

This dialog lists those people who used Panorama 32 and gave me the criticism that forced me to improve it.

Thanks again!

Search

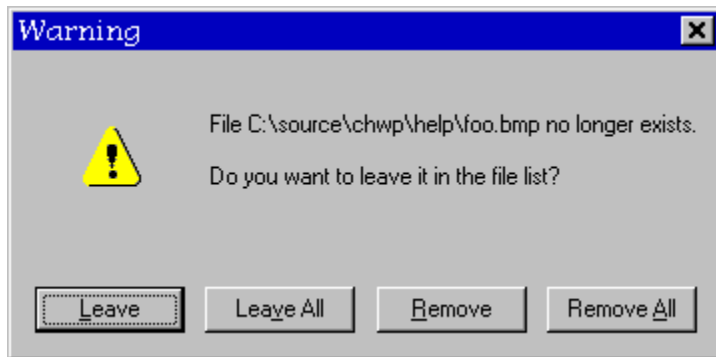
Panorama 32 uses a searching mechanism called **Interactive Search**. Just start typing the name of the file you want to find.

As you type more letters and narrow down the search you will be able to select the file you are searching for.

To end the search without changing the selection that was in effect before the start of the search, press the **Escape** key or click the primary mouse button outside the search area.

To select the file highlighted during the search, press **Enter**.

Non Existent File Warning



This warning dialog will alert the user when a file in the list is missing.

Leave

Leave this file in the list

Leave All

Leave all missing files in the list

Remove

Remove this file from the list

Remove All

Remove all missing files from the list

Keyboard Commands

Key	Command
Ctrl+N	File New
Ctrl+O	File Open...
Ctrl+S	File Save
Enter	File Set as wallpaper
Ctrl+X	File Next wallpaper file
Ctrl+P	File Previous wallpaper file
Delete	Edit Remove file
Ctrl+Del	Edit Delete file
Insert	Edit Add files...
Alt+Enter	Edit Properties
Alt+Up	Edit Move up
Alt+Down	Edit Move down
Ctrl+R	Edit Clear Wallpaper
Ctrl+Enter	Edit Edit bitmap file
Ctrl+F	Options Font
Ctrl+U	Options Suspend
Ctrl+I	View Hide desktop icons
Ctrl+D	View Show full pathname in list

Panorama 32 currently supports Microsoft Windows BMP files, Compuserve GIF, JPEG and PNG files.

