

WINWALL HELP DOCUMENTATION

CHAPTERS

- [Introduction](#)
- [Quickstart](#)
- **Winwall Control Center**
 - [Tray Menu](#)
 - [Wallpaper List](#)
 - [Adding Pictures](#)
- **Options**
 - [General Settings](#)
 - [Display Mode](#)
 - [Wallpaper](#)
- [Frequently Asked Questions](#)
- [Donationware](#)
- [License Agreement](#)
- [About](#)

INTRODUCTION

Have you ever wanted your desktop wallpaper to be different every so often, but not want to have to take the time to change it manually? That's where Winwall comes in!

Winwall is an easy to use, yet powerful wallpaper changer. Its features include the ability to set the time between changes, the order (random or sequential) of wallpaper selection from a list of graphics you choose, and high quality visual effects to tweak and warp your wallpaper for new and interesting backgrounds! It is also easy to add your favorite photos or graphics using searches, or adding entire folders at once. You can even add pictures from the Internet directly!

I'm sure you will enjoy using Winwall and find it particularly easy and straight forward, however if you do need more information, this help file can explain things in more detail.

Thank you for choosing Winwall !

.....

QUICKSTART

1. Adding pictures to your wallpaper list *(required)*

Open the 'Winwall Control Center' and click on one of the buttons in the 'Add to List' box.
You can add an entire folder, single file(s), search a location on your hard drive for supported images or add an image from the internet.

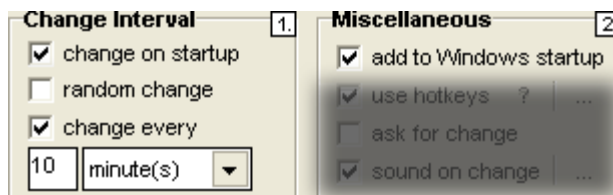
.....

2. Setting 'Display Mode'

Open the 'Options' tab of the 'Winwall Control Center' and change to '[Display Mode](#)'.
Select your favourite '[Display Mode](#)' and continue to the '[General Settings](#)' tab.

.....

3. Defining 'Change Interval' *(required for automatic wallpaper changing)*



You can either let Winwall change your wallpaper at random time intervals or define the change interval

by selecting a time unit (seconds, minutes, hours) and editing the time.
Furthermore Winwall can change your wallpaper whenever it is started. (1.)

To change your wallpaper at every Windows startup you need to put a check in the "add to Windows startup" checkbox. (2.)

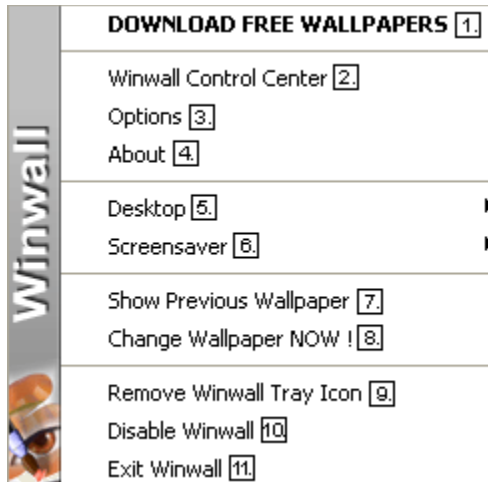
.....

Your wallpaper will change at the time intervals you have set.
Additionally you can manually change the wallpaper at any time by single-clicking (or double-clicking, depending on your configuration in the 'Options'->'[General Settings](#)' menu) on the Winwall 'Trayicon'.

.....

TRAY MENU

You can access the 'Tray Menu' by right-clicking on the Winwall icon in the system tray. The menu structure should look like this:



1. Download Free Wallpapers

Click here to access Winwall's Top Wallpaper Sites - Ranking system.
Visit this site often to download thousands of wallpapers for **FREE**.

2. Winwall Control Center

This will open the main dialog where you have control over your wallpaper list.
Default Hotkey: CTRL-SHIFT-W

3. Options

Opens the 'Options' tab.

4. About

Opens the 'About' tab.

5. Desktop

- Clear Desktop

Remove the wallpaper and restore a blank desktop.

Default Hotkey: CTRL-SHIFT-C

- Small Desktop Icons

Toggle between small and large desktop icons.

Default Hotkey: CTRL-SHIFT-L

- Hide Desktop Icons

Show/Hide desktop icons.

Default Hotkey: CTRL-SHIFT-H

6. Screensaver

- Start Screensaver

Starts the screensaver. (only if one is selected)

Default Hotkey: CTRL-SHIFT-S

- Disable Screensaver

Enables/Disabled screensaver.

Default Hotkey: CTRL-SHIFT-E

- (Screensaver) Options

Opens the Windows screensaver dialog.

Default Hotkey: CTRL-SHIFT-O

7. Show previous wallpaper

Switch back to previous shown wallpapers.

Default Hotkey: CTRL-SHIFT-P

8. Change wallpaper NOW!

This will change your wallpaper.

Default Hotkey: CTRL-SHIFT-RETURN

9. Remove Winwall Tray Icon

Adds/Removes Winwall Tray Icon.

Winwall will be active even without tray icon.

Default Hotkey: CTRL-SHIFT-R

.....

10. Disable Winwall

Enable or disable Winwall.

If disabled, Winwall will not change your wallpaper.

Default Hotkey: CTRL-SHIFT-D

.....

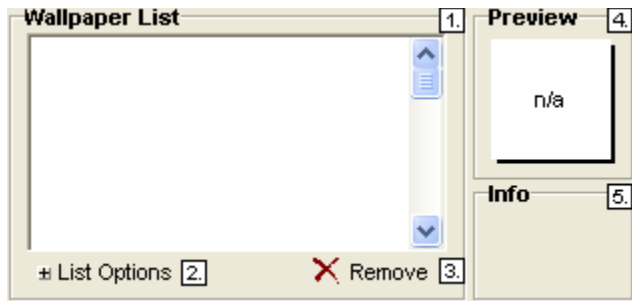
11. Exit Winwall

Quit the program.

Winwall will not be active any longer.

.....

WALLPAPER LIST









1. Wallpaper List

This list contains all images which will be used as wallpaper by Winwall.
Supported file types are: BMP, GIF, JPG, PNG.

Right-click on an image in your wallpaper list to access the file menu:

- | | |
|----------------------------------|--------------------------------------------|
| • Set wallpaper to ... | change wallpaper to this image |
| • Rename caption | customize caption |
| • Restore default caption | - |
| • Options | set individual display options |
| • Restore default options | - |
| • Remove from list | remove the picture from the wallpaper list |

Glyph Legend:

- | | |
|-------------------------------------------------------------------------------------|----------------------------------------|
|  | no changes |
|  | customized caption |
|  | customized option |
|  | customized caption & customized option |
|  | internet file |
|  | broken image |

2. List Options

Click on the 'List Options' button and this menu will popup:

- | | |
|--------------------------------------|----------------------------------------------------|
| • New | creates a blank wallpaper list |
| • Save | save your wallpaper list |
| • Load | load a wallpaper list |
| • Quick Wallpaper List Change | this feature allows you to access your wallpaper |
| | lists using hotkeys. |
| | Thus you're able to toggle between your favourites |

- **Refresh List**
- **Select**
wallpaper list.
- **Sort**
should be sorted

deactivate
- **View Type**
wallpaper list:

wallpaper lists quickly. 9 slots are available.
Simply click on a slot and choose
a wallpaper list you would like to assign to this
hotkey.

this will update the current wallpaper list
select or deselect images in the

choose whether your wallpaper list

ascending or descending. You can also

sorting by setting 'Sort' to 'None'.

Winwall offers 3 'View Types' for your

1.Filename	Hotkey: ALT-1
2.Path&Filename	Hotkey: ALT-2
3.Filename (Path)	Hotkey: ALT-3

- **Always remove invalid pictures**
the validity of

if checked, Winwall will always check


the images in your wallpaper list.
Invalid images will be removed.

3. Remove

Click on this button if you want to remove the selected images in your wallpaper list
or to remove invalid pictures.

4. Preview

Select one of your pictures in the wallpaper list and you'll see a thumbnail preview.

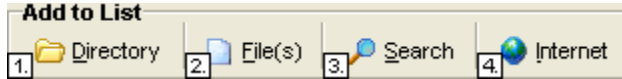
Move the mouse cursor above the preview picture and click on the  button to see a bigger preview
which is
also resizable.

5. Info

This box informs you about the file type and the screen resolution of the image.

ADDING PICTURES

Open the 'Winwall Control Center' main dialog.
There are five ways to add images to your ' [Wallpaper List](#) '.



1. Directory

Add an entire directory to your wallpaper list.
Just place your new images into one of the monitored directories and Winwall will automatically add them to the [Wallpaper List](#) .

2. File(s)

Select supported images (BMP,GIF,JPEG,PNG) from your local hard drive which will be added to your current [Wallpaper List](#) .

3. Search

Winwall will search the selected location (including sub folders) for pictures and add them to the Wallpaper List.

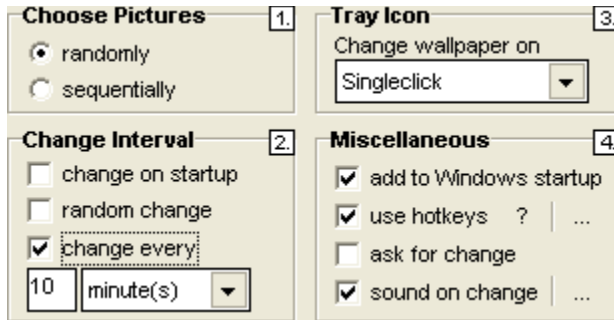
4. Internet

This will add an image from the internet. (requires internet connection)
The picture won't be cached thus guaranting fresh images live from the world wide web.
(Tip: This function is great for adding live feeds of webcams to your [Wallpaper List](#))

5. Drag & Drop

Drag pictures directly from the Windows Explorer and drop them on the Winwall window.
You can also load a WPL (Wallpaper List) File using this method.

GENERAL SETTINGS



1. Choose pictures

Choose whether Winwall should select the next wallpaper randomly or sequentially.

2. Change interval

This will tell Winwall when you want your wallpaper to be changed.

- **change on startup** Winwall will change your wallpaper everytime it starts. If you want Winwall to change your wallpaper everytime Windows start, you need to activate 'change on startup' and 'add to Windows startup'.
 - **random change** Winwall will change your wallpaper at random time intervals.
 - **change every ...** Winwall will change your wallpaper at entered interval.
-


3. Tray Icon

Decide whether Winwall should change your wallpaper on a single-click or a double-click on your tray icon.

The opposite event will be used to open the Winwall Control Center.

4. Miscellaneous

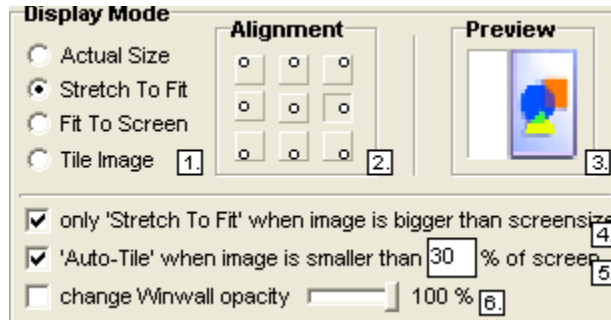
- **add to Windows startup** this will place a shortcut to Winwall in the Windows startup folder.
- **use hotkeys** enable/disable Winwall hotkeys. Click the button to customize the hotkeys.

- **ask for change** Winwall can ask you if you want to change your wallpaper by showing you a small preview of the upcoming wallpaper.
- **sound on change** Winwall can play a wav sound file everytime it changes the wallpaper. Click the  button to change the wav file.

.....

.....

DISPLAY MODE



1. Display Mode

You can choose between 4 'Display Modes':

- **Actual Size** No resizing
- **Stretch To Fit** Resizing to best fit to screen.
- **Fit To Screen** Full screen resizing
- **Tile Image** Tiling image over the screen

2. Alignment

Winwall can place your image in 9 different screen positions.
Take a look at the preview to see what it may look like.

3. Preview

This preview gives you an idea of what your wallpaper may look like using the display options you have set.

4. Only 'Stretch To Fit' when image is bigger than screensize

If this option and 'Stretch To Fit' are checked, Winwall will only 'Stretch To Fit' if the image does not fit on the screen.

5. 'Auto Tile' when image is smaller than x % of screen

If this option is checked Winwall will automatically tile the image as soon as image width x image height is smaller than x% of screen width x screen height.

.....

.....


6. Change Winwall opacity (Windows 2000/XP) / Make desktop icons transparent (Windows 9x)

- **WINDOWS 2000/XP:**

This will make Winwall transparent. Set the opacity level by regulating the bar.

- **WINDOWS 9x:**

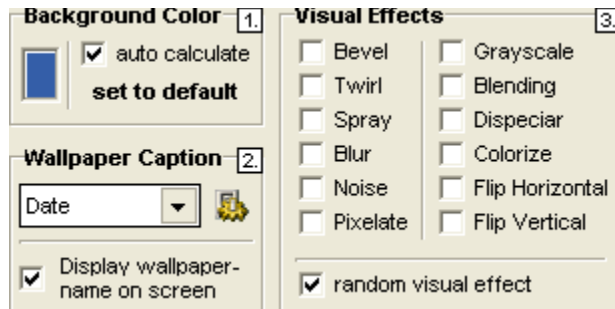
This will make your desktop icons transparent.

Click this  icons text color ... button to set the color of the icon captions.

.....

.....

WALLPAPER



1. Background Color

Select the desktop background color.

Winwall is also capable of calculating the color which fits best to your current wallpaper.


2. Wallpaper Caption

Decide whether Winwall should display a caption on your wallpaper or not.

Available captions are:

- **Date** *(current date)*
- **Title** *(wallpaper title)*
- **Quote** *(random quote)*
- **Version** *(Winwall version)*
- **Custom** *(customized caption)*
- **FileLong *** *(filename with file extension)*
- **FileShort *** *(filename without file extension)*
- **PicturesCount *** *(number of pictures in your wallpaper list)*
- **PicturesSize *** *(occupied disk space of pictures in your wallpaper list)*
- **Time *** *(current time)*
- **UpTime *** *(time since start of Windows)*
- **WallpaperChanges *** *(number of wallpaper changes since 1st start of Winwall)*

* = only available in the customize caption dialog

Press the  button to configure the font and position of the caption or to edit your custom caption and the quotes.

3. Visual Effects

Apply visual effects on your wallpaper and give them a unique new touch.

You can also apply random visual effects on your wallpaper.

Just select the effects you wish to apply and mark '**random visual effect**'.

Winwall will now choose one of the selected effects and apply it on your wallpaper.

If only '**random visual effect**' is checked and no visual effect is selected Winwall will just choose any random visual effect.

.....
.....

FREQUENTLY ASKED QUESTIONS

**Q: I want Winwall to change my wallpaper only once per session.
It should change the wallpaper at start up and then close itself to save system memory.**

A: Open the patch.ini file which is located in the Winwall directory and turn on 'Exit on Change'.
(ExitOnChange=On)
This will force Winwall to exit after the the initial wallpaper change at start up, thus saving system memory.

Note: Winwall will be inactive afterwards and needs to be restarted if you want to use it again.
(Remember to turn off 'Exit on change' again)

.....

.....

**Q: I'm unable to add more than 6000 pictures to my wallpaper list.
Winwall tells me that the wallpaper list is full.
But I want to add more pictures. How can I achieve that ?**

A: Open the patch.ini file which is located in the Winwall directory and change the value of 'FileLimit'.
(FileLimit=x)
But I recommend not to add more than 6000 pictures, since Winwall would require a lot of memory to manage all those wallpapers. Rather split up your pictures into seperate wallpaper lists, which could be categorized by topics.

.....

.....

Q: Winwall adds folders recursively. But I want to add just a single directory.

A: Open the patch.ini file which is located in the Winwall directory and turn off 'Include Sub Directories'.
(IncludeSubDirs=Off)

.....

.....

**Q: I'm using small images as wallpaper which need to be resized.
However Winwall creates those ugly squares or other irritations on the resized image.
Is there a way to use another resampling technique ?**

A: Open the patch.ini file which is located in the Winwall directory and turn on B-Spline Resampling.
(B-Spline=On)
Winwall will now use the B-Spline resampling technique which gives the picture a softer/blurrier look. The irritations should not appear anymore.

.....

.....

Q: Winwall runs on a very slow machine. I want to turn off 'resampling'.

A: Open the patch.ini file which is located in the Winwall directory and turn off 'Resampling'.
(Resampling=Off)

.....

.....

Q: I'm using a software which isn't displayed properly anymore, as soon as Winwall changes the wallpaper.

A: Open the patch.ini file which is located in the Winwall directory and turn off 'Quick Wallpaper Change'.

(QuickWallpaperChange=Off)

This should ensure other software will be notified about the wallpaper changer.

.....
.....

DONATIONWARE

Winwall is Donationware.

This means you can use it without restrictions and without paying any registration fees.

In other words: it's **FREE** of charge.

However, if you like Winwall and find it helpful, please consider sending me a donation to give incentive for future development and improvement.

Please contact me for further information: winwall@net-session.com

Thank you !

.....
.....

LICENSE AGREEMENT

Except where otherwise noted, all of the documentation and software included in the Winwall package is **copyrighted by Christian Rothholz**.

Winwall may be distributed freely 'as is'.

You may **NOT** change or modify any parts of this software without permission of the author.

There is no warranty or other guarantee of fitness for this software.

Bug reports or fixes may be sent to the author, who may or may not act on them as he desires.

.....
.....

ABOUT

Version: Winwall 2.1

Homepage: <http://www.desktopchanger.com>

E-Mail: winwall@net-session.com

copyright (c) by Christian Rothholz

.....

