

Configuration LifeGuard

The simplest way to stay configured.

[Introduction](#)

[What It Does And How](#)

[Lifesavers](#)

[Registry Backup Info](#)

[MS-DOS Mode Restore Info](#)

[Undo Restore Feature](#)

[Customizing Options](#)

[Frequently Asked Questions](#)

[Editors And Tools](#)

[About Registration And Upgrades](#)

[How To Uninstall \(...And More\)](#)

[Copyright Notice](#)

What It Does And How

Configuration LifeGuard is a fully functional application with all features enabled allowing the users to duly evaluate its power without performance restrictions. It was developed for Windows 95/98 and has been optimized for both platforms. With further functional and graphical enhancements offers unmatched performance in configuration backup and restore.

Features include:

- **selective backup, restore and undo restore options handling up to 10 files**
- **customizable file selections**
- **autorestore option in MS-DOS mode**
- **automatic file-presence and file-availability checking with full performance feedback**
- **automatic file attributes restoring to the system default**
- **progress bar showing the progress of your operation**
- **quick PC restart**
- **quick launch with handy access to:**
 - **MS-DOS Prompt,**
 - **3 system editors,**
 - **2 system maintenance and repair tools,**
 - **2 system file management applications**
- **extensive background error-handling with efficient error-autodiagnostics.**

To back up your main configuration and system files, select the files to be backed up first. To back up, press the Backup button or click on Menu Execute | Backup. Generally, it is recommended to select for backup all 10 files when running the program for the first time. At later backups, accept the default suggestion to back up the first 6 configuration files only, unless you edited/alterd file MSDOS.SYS and/or upgraded other files.

The destination backup folder is BACKUP.CLG in the main Windows folder (the program will find your main Windows folder automatically, whatever its actual name or drive where it is located at). This setting is preset and cannot be changed. The advantage of this solution is that you can always find your backup at the same location on your hard disk. The new backup will automatically overwrite the previous one so that you always have the latest version of backup available. To operate the program using your keyboard only, press the keys with underlined letters in buttons, as well as numbers for the file selections, and press the keys for menu selections together with Alt button.

On its launch or activation (in case it was already opened and minimized or hidden), the program will automatically disable its Restore and/or Undo Restore features if it does not find any backup or undo files. These features are, therefore, naturally disabled on the first launch of the application. They will be automatically enabled as soon as the program notices existence of any of the files in question. The same will happen to the Backup, Restore and Undo Restore buttons as well as to Menu Execute, if no files have been selected. The program thus flexibly reacts to a situation of no selection checked as well as to the backup status and brings you the respective feedback, accordingly.

To restore the backup in Windows 95/98, select the files to be restored and press the Restore button or click on Menu Execute | Restore. Please note that Restore Registry and Undo Registry tasks are always performed in MS-DOS mode, even when launched in Windows 95/98. For details, check topic [Registry Backup Info](#).

To find out how **to restore from MS-DOS mode**, see topic [MS-DOS Mode Restore Info](#).

For the restored files to take effect, restart the computer.

Registry Backup Info

Windows 95/98 Registry uses two hidden system files:

SYSTEM.DAT and USER.DAT

These two files contain the vital and most essential configuration information for your system to work at all as well as to work properly. They should be protected from any manual interference, tampering with and damage. Backup copy of these two files is the minimum prerequisite if you need or want to return to your previous system configuration, and the absolute prerequisite if you need or want to return to your previous Registry configuration.

The two Registry files are included in Configuration LifeGuard's default selection. For reasons of increased safety, they can be selected or deselected only together. For the same reason, the Registry files should preferably be restored or undone in MS-DOS mode, as mainly Windows 98 is sensitive to Registry replacement when this version of operating system is running. Unlike in its previous versions, Configuration LifeGuard now performs the Restore Registry or Undo Registry tasks in MS-DOS mode only, even when launched from Windows 95/98. This prevents whatever system incompatibilities and ensures smooth and foolproof performance of these tasks.

To be on the safe side, you should always have a backup of these two files created BEFORE a new change has been made to your system's configuration.

MS-DOS Mode Restore Info

MS-DOS mode AutoRestore component of Configuration LifeGuard is:

RESTORE.BAT

This file **MUST** be in your main Windows folder or in its COMMAND subfolder if you want to be able to run it when bypassing the system files during startup. File RESTORE.BAT is placed into the COMMAND subfolder of your main Windows folder by the installation routine and when run it will find the location of your main Windows folder automatically, whatever its actual name or drive it is located at.

To activate the MS-DOS mode AutoRestore feature, first restart the computer in MS-DOS mode if you are running Windows 95/98 (do not use MS-DOS Prompt feature for this purpose, as it is run from within the Windows session). If you cannot load Windows 95/98 at all, hit F8 key at notice "Starting Windows 9x..." after restart. You will be offered a "Microsoft Windows 9x Startup Menu" with several options. Choose "Safe mode command prompt only", **type RESTORE** (not case-sensitive) **and press Enter**. This procedure will automatically restore all backed up files.

In case your system was damaged to such an extent that you couldn't even boot to MS-DOS mode (getting various error messages, e.g. "non-system disk", etc.), the first thing to do is to use the **Startup Disk** to boot from a floppy. Next, when at A:\, type "SYS C:" and press Enter (not case-sensitive, no quotes and note a single space between SYS and C:) to transfer/replace the damaged basic system files and reboot. Then proceed as described in the paragraph above. There is never enough of the general advice to have a Startup Disk available if the operating system crashes and you cannot even boot to MS-DOS. Though Configuration LifeGuard goes by itself much further in its backup scope (as well as in ease of use) than the standard Startup Disk that can be created by the system, it is not designed to replace some of its functions so if you have not created one do so without further delay. To create a Startup Disk click on Menu Start | Settings | Control Panel, load Add/Remove Programs applet, select the Startup Disk tab and follow the instructions on screen. Have a formatted diskette at hand.

After you have successfully restored your backed up files restart the computer.

For the ease of use when needed, print this page and store it at a safe place.

Undo Restore Feature

After pressing Restore button (or clicking on Menu Execute | Restore) all selected files at their original system locations will be first backed up into BACKUP.CLG\UNDO subfolder in your main Windows folder, which will be automatically created if it does not exist already for a possibility of undoing the restore later. This feature is also automatically activated for all backed up files when you restore the backup from MS-DOS mode.

If, after the backup has been restored, you need or want to return to your previous configuration, you can undo the restored files in Windows 95/98 by selecting them and pressing the Undo Restore button or clicking on Menu Execute | Undo Restore.

For the undone files to take effect, restart the computer.

Frequently Asked Questions

Q.: Who is the target user of this program? Is it for beginners or for advanced users? What does it do and how can it be helpful to an average user?

A.: Configuration LifeGuard does what it says - it is a handy and extremely fast and reliable backup and restore utility designed for the main configuration and system files of Windows 95/98, enhancing your safety and enabling you to easily return to your previous configuration, should you desire to do that. A single mouse-click is all you have to do to discard your changed configuration or damaged Windows 95/98 Registry files into oblivion and replace them with their backed up version. It is a MUST for all those users who prefer to be safe than sorry when things turn out differently than how originally expected. It is a foresighted preventive investment and it is suitable for all scope of users - beginners, intermediate users, advanced users and even the computer gurus will appreciate its ease of use, speed and general reliability in guarding the life of the configuration settings.

Q.: But why Configuration LifeGuard? Why not some other configuration backup and restore program?

A.: Ultimately, it is always the end-user who decides which application suits the particular needs most. On this note, Configuration LifeGuard is a universal and compact product that can boast of conceptual approach, purposeful integrity, easy-to-handle and practical features and smooth performance. It DOES what some others DO NOT, and it DOES NOT what some others DO. Judge by yourselves:

- **some other programs** can be operated in Windows 95/98 only, which turn them useless if you cannot load Windows 95/98 at all
- **some other programs** compress and rename their backup files, which often prevents unskilled users to easily reach them manually in MS-DOS mode if they are unfamiliar with all the cryptic and complex decompression program's switches and commands
- **some other programs** allow you to make several different backups. This can be perhaps useful for some specific testing purposes but has little practical use as restoring any of the configuration backups made BEFORE the last backup renders the latest changes to the system's configuration useless as they are automatically discarded
- **some other programs** allow you to restore the backup in MS-DOS mode only, not allowing the convenience to restore in Windows 95/98 (an exception is the Windows 95/98 Registry, which, for reasons of increased safety, should be preferably restored in MS-DOS mode)
- **some other programs** do not allow you to undo the restore, once your configuration has been restored
- **some other programs** do not recognize absence of some of the configuration files on the system and do not inform the user that a particular file has actually not been accessed and handled
- **some other programs** may get stuck and do not work properly unless all configuration files are at their default locations, not giving the user any hint or feedback why they do not operate and what has actually happened. The users have to figure out themselves what went wrong
- **some other programs** treat configuration files as one package not allowing the user to selectively handle individual files, thus making a backup or restore of a group of files only
- **some other programs** always ask you for the location of the backup even though you would prefer to have it always at the same place (without the risk that another user would change it and then you would fail to find it...) and would prefer simply not to be bothered with this and other

further questions and confirmations, etc.

We, at Visual Fantasy, have tried to learn from **some other programs** by developing (and fine-tuning) a simple-to-use yet powerful and sophisticated application that - in spite of its inconspicuous look - goes beyond all this and even further and serves you as easily and reliably as only possible. If you feel that the above features of **some other programs** do not really appeal to you very much and that you would actually welcome quite the opposite - you are on the right track and you have chosen well. Configuration LifeGuard was born on the imperfections, bugs and not very convincing and practical features of **some other programs**. Its emphasis has been put on reliability, speed, ultimate automation and thus maximum simplicity in its operation but at the same time on not compromising in individual approach and allowing the user to make distinctively selective decisions. Let's sum up what has already been said before:

- Configuration LifeGuard is unambiguously straightforward - it takes a single mouse-click or a key-press and only a few seconds to make an automatic backup, restore or undo restore and it enables you to selectively choose up to 10 crucial and critical configuration and system files. To access the backup from MS-DOS mode (i.e., if you cannot load or restart Windows 95/98 at all or as well at any other time you prefer it), an efficient MS-DOS mode AutoRestore component of this program is provided as the bottom safe line (see topic [MS-DOS Mode Restore Info](#) for details). Configuration LifeGuard does not compress its backup, does not merge it and does not rename the backed up files. This arrangement is quite intentional - it enables to access the backed up files manually and to copy them individually, should the user choose so.
- When backing up, restoring or undoing the restore with Configuration LifeGuard, this program will first check for the existence and availability of the files to be dealt with and if it does not find them or cannot access them at the moment (e.g., because of being updated by the system) an individual dialog box will be displayed informing the user that the particular file was not accessed and will not be handled. The respective selection will then be unchecked automatically. After the operation is completed, the checked selections will inform the user which files were duly processed. ***There is a lot of background work and checking and double-checking the program does, which the user may never notice when everything goes well. This ensures that chances for an error are brought down as much as possible.***

So, why Configuration LifeGuard? Said in a nutshell - because it goes to great lengths to make the system configuration backup and restore REALLY work.

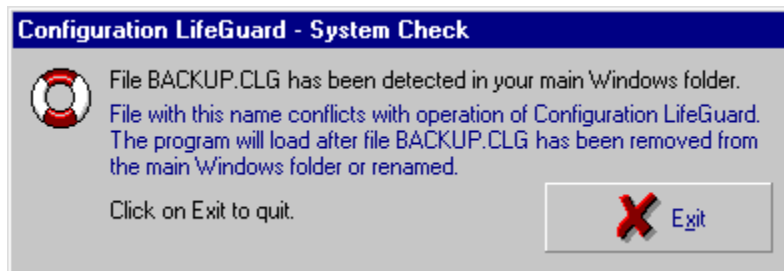
Q.: Why doesn't the user have an option to select the location of the backup or undo folder and their names?

A.: When Configuration LifeGuard was being developed, many different configuration backup programs available on the market were analyzed from the point of view of their functionality, level of automation, shortcomings, speed, scope of error handling and general features. In order to enhance effectiveness of this program that option has been intentionally dropped. Location of the backup folder has been thoroughly selected - in the main Windows folder it is generally more protected from other user-created folders and from undesired manual interactions outside Windows 95/98 system files. Its name has been chosen so as not to conflict with any system folder or system file. Having a backup folder at one fixed and generally safe location has several advantages and simplifies the use of the configuration backup program. The user is not bothered with several dialog boxes to always determine or confirm the location and name (by the way, mostly the same) of the backup and when restoring the backup it is also not necessary to remember, determine or confirm the location of the backup. This could be even more confusing when the particular PC is in use by more than one person and its users could have created different backups at different locations on the hard disk thus decreasing the safety of the configuration because some of these backups could have been made long before installation of later programs and their restoration could negatively affect normal operation of these applications. Having a backup at one fixed place on the hard disk, where newer backup overwrites the previous one, assures that the user has always direct access to the latest backup. It also almost ultimately simplifies and automates the operation of this configuration backup program - *to make a default backup, restore it or undo the restore the user*

makes, e.g., just three clicks - launching the application, performing the task (without having to specify any other parameter) and exiting directly from the respective dialog box. In order to protect the undo folder, the most logical solution was to place it inside the backup folder.

Q.: But what would happen if a file called BACKUP.CLG already exists in the main Windows folder before the first backup is made? This would effectively prevent creating the backup folder with the same name there, wouldn't it? How does the program cope with such a situation?

A.: Firstly, it has to be observed that there is no such Windows 95/98 system file residing in the main Windows folder. In the very unlikely event that a file with this name nevertheless happens to be present there (it could have been, e.g., user-created), you will see the following dialog box on the program's launch or activation:



Presence of file BACKUP.CLG in the main Windows folder will prevent the program to load or to activate. The above solution is part and parcel of the application's built-in error-autodiagnostics ensuring its foolproof operation. Configuration LifeGuard will not delete such a file and it will load only after it has been satisfied that a file with this name does not exist in the main Windows folder. This is for your own protection.

Q.: Why is file WIN.COM included in the selection of the files to be backed up? What is so important about this file?

A.: File WIN.COM cannot be more important than it is. It is THE file that actually starts Windows 95/98. Without it or having it corrupt you would not be able to load Windows 95/98 at all. Those users who tried to manually delete excessive backups of WIN.INI with extensions *.SYD, *.BAK, *.\$\$\$, *.---, *.TMP, etc., may be often tempted to delete as well WIN.COM, the name of which may look quite similar to some. Existence of this file is, however, a "life and death situation" for Windows 95/98. Those users who have unintentionally deleted this file found out the simple truth that there was no other remedy than to reinstall Windows 95/98. To have a backup of this small file may, therefore, come very handy.

Q.: Are there some other features of Configuration LifeGuard that have not been mentioned so far?

A.: There are yet two other things that are generally not part and parcel of configuration backup programs.

The first is related to Windows 95 only:

In an emergency situation, if no previous backup has ever been made using this application or if the backup was deleted, running restore from MS-DOS mode even from a diskette will automatically restore the two Registry files backed up by Windows 95 during the last startup. The same feature is activated also when one or both Registry backup files backed up by Configuration LifeGuard are missing but other configuration and system files have been backed up. Running restore from MS-DOS mode (typing RESTORE and pressing Enter) from a diskette does not even require this application to be installed on the particular computer. Hence, the MS-DOS mode restore can act also as some sort of a rescue program even if no other precaution or Registry backup has been made. This is definitely a simpler

solution than to manually change the attributes of altogether four files related to the Registry (two of them are the Registry configuration files and two are the system Registry backup) then to copy the backup files in place of the Registry configuration files (overwriting them) and finally again to change/restore the attributes of all four files back to their default value. If a small mistake is made, the whole procedure has to be repeated unless the mistake prevents any more repeating and Windows 95 has to be reinstalled as the only solution. This feature is, however, unavailable in MS-DOS mode when using Windows 98 operating system.

The second is related to both Windows 95 and 98:

Configuration LifeGuard serves as an automatic “resetter” of the attributes of the configuration and system files. If, for example, you played around with the attributes of any or all 10 files which this program can back up (or restore or undo restore, for that matter) and, let's say, you have changed the attribute of AUTOEXEC.BAT to hidden (+h) or removed the read-only and hidden attribute of IO.SYS (-r -h), etc., then running backup, restore or undo restore will automatically reset the attributes of all 10 files to their default value, provided they are at their expected system locations (the program will check for their existence and availability first). This small additional feature is designed to even further enhance the protection of the main configuration and system files and the safety of your PC. It works in both Windows 95/98 and MS-DOS mode. In addition to this the program also maintains the BACKUP.CLG folder and its UNDO subfolder with all their files visible (attributes -r -a -s -h) so that they are always easily available for manual access. Why is it so important? The point is that in MS-DOS mode you cannot see hidden directories and/or hidden files. Any manual attempt to individually copy the backed up files using MS-DOS mode commands would, therefore, require removing the hidden attribute of all files involved before being able to access them, in case it was previously set. Not everyone knows how to do this. Configuration LifeGuard does this for your backup automatically - keeping it visible at all times - so that you may easier reach the manual MS-DOS mode command line option, should you prefer or have to do that.

Q.: Can this program be used in Windows 3.x or NT?

A.: No, it cannot. Configuration LifeGuard is for Windows 95/98 only. It is a true 32-bit application that will not run in the 16-bit environment of previous versions of Windows. You also won't be able to use it in 32-bit mode of Windows NT because of different structure and mechanism of configuration of its operating system. Development of version for Windows 3.x or Windows NT is not envisaged.

Q.: How often and when is it advised to run Configuration LifeGuard?

A.: This depends entirely on the wish and needs of the individual user! Generally, it is advisable to run this program after its installation and also each time BEFORE a new application will be installed or changes to the configuration and system files (including the Registry) are to be made. A return to the previous configuration is then only a mouse-click far away. *At the same time, it is a good idea to possibly avoid backing up your configuration when closing the Windows session, if you made manual changes to your configuration files. The fact that your system works properly doesn't necessarily mean that you will be able to restart it the next time. The point is that if you made a "deadly" mistake during your manual editing of configuration files, you may not restart your system and the backup files would be just another useless mirror image reflecting the damaged configuration and would not be of much help. Preferably do it AFTER your system has been successfully restarted and AFTER you are satisfied that your programs function properly. That is the right time to make a backup and that is also the difference between a useful and a useless backup.*

Click on this bar for a bonus tip.



Copyright Notice

Configuration LifeGuard

Configuration backup and restore utility for Windows 95/98

Version 3.7

Copyright © 1997-2000 Visual Fantasy

Configuration LifeGuard is shareware. It may be freely copied and distributed without any limitations and by any media in its original self-extracting executable installation file, provided it has not been modified in any way. No prior consent from Visual Fantasy is necessary.

This software is provided "as is" and without warranty of any kind, either express or implied. Visual Fantasy is not responsible for any problems or damages that may result out of the use of or inability to use the software.

If you like this program and find it useful, why not to share your views with your friends and editors of your favorite computer magazines, newspapers as well as Web sites that review software? The more Windows 95/98 users know about Configuration LifeGuard, the more people will use it and the safer their Windows system configuration will be! Feel free to create links to our Web site.

If you have access to the Internet, you may check for updates and other software at Visual Fantasy Web Site clicking on the following link: <http://www.kagi.com/vfstudio/>

***Your configuration's safety belt.
Don't go Windows unfastened!***

Introduction

This program will help you to stay configured in Windows 95/98.

Unsure what it means? Does it offer too little or too much? Well, saying it simply, it will enable you to safeguard your system configuration so that in case anything goes wrong with it you may effectively restore it in full or selectively any of its components in the most intuitive way. For some it may mean much, for others... who knows. But there may be better ways to spend your time than unnecessarily reinstalling the operating system and dozens of your applications, some of which may not be readily available in their installation form... Read the following lines and topics carefully. They will explain to you how this application operates and will provide you with useful background info as well as tips and tricks how to get most of it.

Practically all PC users sooner or later install new software. Some do it more often, some perhaps less. Not everyone is, however, aware what the new software does to our system configuration settings and that it actually alters our configuration files. It does this according to its own needs and its own logic writing into them all the system-related information that these programs need for their normal operation. Also when you customize a particular program, this information has to be stored somewhere. In Windows 3.x it used to be stored mainly in files called AUTOEXEC.BAT, CONFIG.SYS, SYSTEM.INI, WIN.INI and often as well in a specific file related to a given program with an INI extension.

Windows 95 introduced plenty of changes (and Windows 98 is essentially on the same footing) that have not circumvented also the way in which the system configuration is stored. All the above files remain, though they mostly serve the purpose of so-called backward compatibility with earlier DOS and Windows 3.x programs. At the same time a creature called Registry was decided to store the configuration settings containing information pertaining to the operation of this system as well as to the operation of 32-bit software. This Registry is a good servant but a bad master, if you let it rule over you. It is indeed the brain of the operating system - it's made up of two system files called SYSTEM.DAT and USER.DAT and it just cannot be repeated over and again enough that unless you know what you are doing you better avoid messing around with these files (maybe only if you want to render your computer useless or wish to reinstall the operating system). The system information is just stored somewhere - it used to be pretty simple, now it is a bit more complex. So far, so good - after all, an average user usually doesn't really bother where is it stored and what is it good for... if it functions well.

But what happens when you decide to uninstall a program that does not appeal very much to you, does not fulfill your dreams or even worse - does strange things that you dislike. Of course - in Windows 95/98 you hit Start, Settings, Control Panel, Add/Remove Programs, select your victim and send it to the happy hunting ground. Definitely easier way than in Windows 3.x. But do the built-in uninstallers of the 32-bit programs really always remove everything what these programs write into our configuration files? No one, who is really familiar and serious about the PC world, will give you an unequivocally positive reply. Because it is just not the case and even the commercial uninstallers are mostly unable to remove 100% of what has got into our system leaving few "remnants" behind. These remnants could be just some harmless clutter that does not do anything but occupies some space... or possibly raises eyebrows as to their actual purpose when looked at by a specialist's eye. But sometimes they may conflict with normal operation of other programs if not thoroughly removed. The way to do this is to painstakingly and with great knowledge manually analyze every snag corner of the configuration files that could have been changed and with a surgeon's precision remove what is a "dead matter" and serves no purpose anymore or even worse - what is causing other associated problems in an operator's diagnosis. But, similarly as in an operating theater - if you unknowingly cut out a vital part, you may do more harm than help. A single human error can ultimately even kill the patient or irreparably damage the system settings on your computer.

There also may be situations when you make a mistake during editing of configuration files. It may happen that you may even delete some of the vital values or files by mistake and you'll find this out when it is too late to take it back or impossible to restart Windows 95/98 at all.

And here is where Configuration LifeGuard steps in. What it does is making exact duplicates ("clones" - if you like) of the configuration files that could be changed as well as of the main system files of Windows 95/98. These duplicates are stored at an easily accessible but safe place on the hard disk for an eventuality of FULL and 100% restoration of the previous configuration by copying them over the changed files, overwriting them and thus recovering their original value. If you are not interested where this place is on your hard disk, you need not even know this as you need not have to set anything - the program will do everything for you automatically - making the backup, retrieving and restoring it (when you want to return to your previously backed up configuration) or undoing the restore, if you yet changed your mind and want to cancel it. It does this in a most straightforward but at the same time reliable way for the user confirming which files were REALLY handled and were present at their locations or, as the case may be, which ones were locked or otherwise unavailable and were skipped. Apart from fully automatic restore in both Windows 95/98 as well as in MS-DOS mode, Configuration LifeGuard allows the backup files to be accessed any time manually, always maintaining their unhidden attributes. The user can choose from a single file to up to ten files for either backup, restore or undo restore in Windows 95/98 which allows plenty of different combinations in specific situations when only some of these files need to be handled. It is as simple as that yet it may save one a lot of unnecessary headache and hassle.

It is also worthwhile to note that it is too late to invest in your system's protection when the crash has already happened. To be prepared for a configuration crash, means that you need to take preventive measures BEFORE it occurs. With this program you'll be ready and secure in no time.

Configuration LifeGuard will make your life with Windows 95/98 easier and safer. It is a simple-to-use and friendly utility that will be your close ally in exploring boundaries of new software and enabling you to return exactly where you stood before. Nothing less, nothing more. For most users their indispensable right hand and an inconspicuous safety device always at reach in related emergency situations.

How To Uninstall (...And More)

Before uninstalling, make sure to close Configuration LifeGuard and/or any of its associated files (Help file, Read Me, Register, etc.).

To uninstall this program, use the standard Windows 95/98 uninstall procedure: click on Start Menu, Settings, open Control Panel, load Add/Remove Programs applet, select "Configuration LifeGuard" and follow further instructions on screen.

If you are reinstalling the program to a different destination folder on your hard disk, always uninstall the program first as the installer writes into the installation log and to the Registry the particular location of the program. This information is subsequently used in the uninstall process.

If, however, you are installing a newer version or reinstalling the program to the same destination location on your hard disk (irrespective of its version number), you do not have to uninstall it first as the installer will simply overwrite all files and relevant values of the Registry, re-creating the same structure. Before proceeding, make sure to close the current instance of the program and/or any of its associated files.

Apart from uninstallation (being a standard norm nowadays), Configuration LifeGuard offers **a mode to unregister** and to strip it of the registered version features - either before it is uninstalled or separately from it. This is a hidden feature that was until recently undocumented and we informed about it only those users who specifically requested it. Due to a wider demand, it has now been made public and is available to all registered users (for obvious reasons, this feature is not available in the unregistered version). Why would a user want to return the program to its trial version? The main reason that was communicated to us by the user community is... Well, we won't bore you with this so you better check this out yourselves loading the Unregistering Mode if you are really curious... Whether and when you are going to use this feature is entirely your decision. It has been provided for the convenience of those users who may want to use it.

To unregister this program, click on Menu Help | License, press U and R keys (not case-sensitive and standing for "UnRegister") and while holding them both down double-click on the yellow icon (sticky note with a clip) in the License's bottom-left corner. Unregistering Mode will load. Follow the instructions on screen - clicking on Yes button will unregister the program returning it to the trial and unregistered version. *Please note that you would be required to enter the password again, should you later change your mind and would want to use the registered version features.*

Editors And Tools

Menu "Editors" enables a direct access to three Windows 95/98 built-in system editors, which can be used for manual editing of configuration files:

Notepad
System Configuration Editor and
Registry Editor.

Always make a backup of your configuration files before editing.

Similarly, Menu "Tools" allows a quick launch and a handy access to some of Windows 95/98 built-in system maintenance and repair tools (Disk Defragmenter, ScanDisk) as well as to built-in system file management applications (File Manager, Windows Explorer).

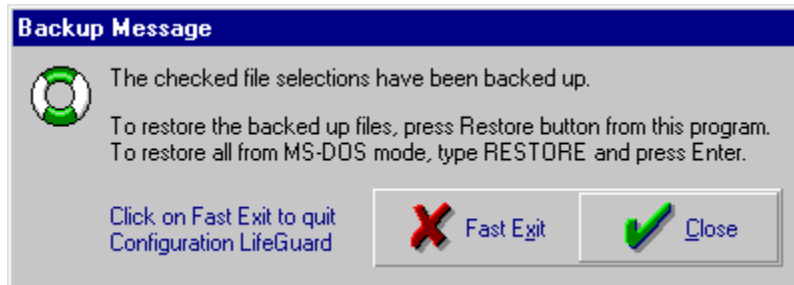
In case you need a quick access to the command line prompt, click on Menu File | MS-DOS Prompt.

You may easily load any of these program options without leaving Configuration LifeGuard.

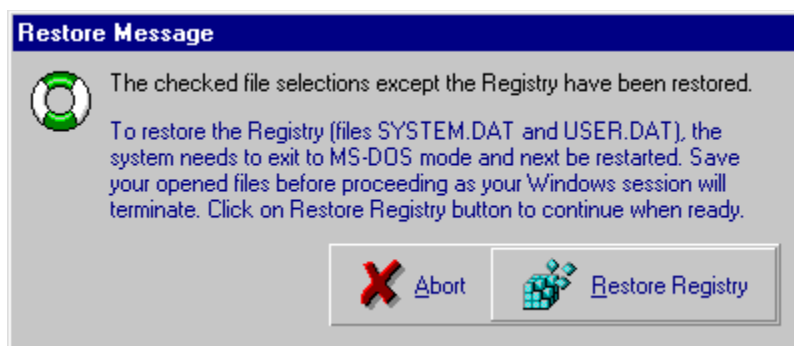
Lifesavers

Similarly, as with the traffic lights, Configuration LifeGuard uses a concept of three different colors of its default purple icon (the lifesaver) to analyze and visually distinguish the situation that has occurred during backup, restore or undo restore. A corresponding feedback dialog box with the respective color of lifesaver will pop up.

GREEN lifesaver indicates that the last operation which the user performed has been successful and that no problems or errors have been encountered with the files that remain checked. Under normal circumstances, you will mostly see this type of dialog box only:

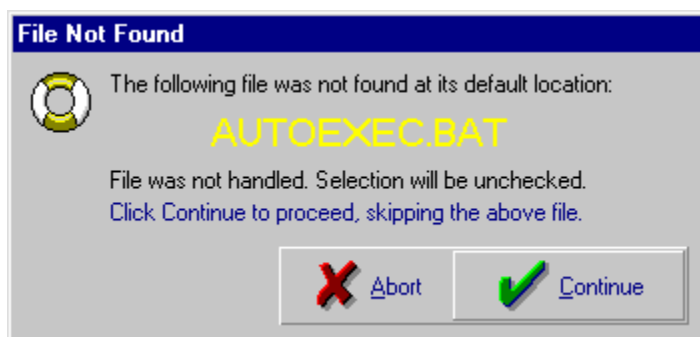


or, alternatively,

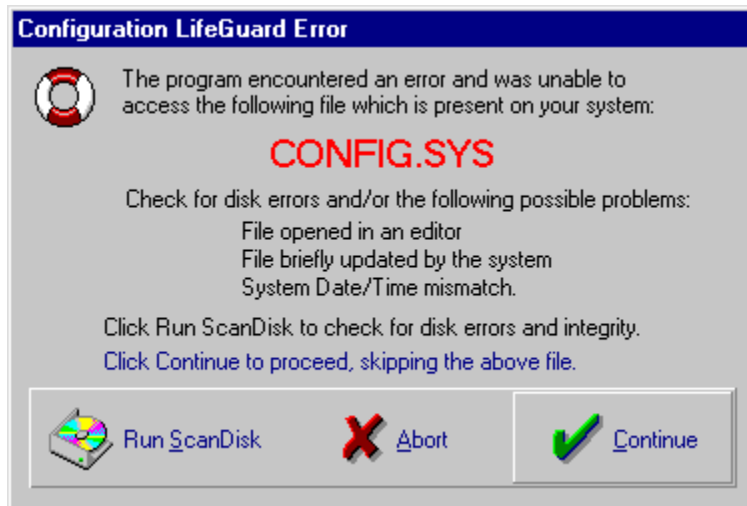


When the error-autodiagnosics feature that is built into this program detects a problem, it will activate the yellow or red lifesaver dialog box specifically determining the culprit that has invoked it. Your identification of the problem can thus be narrowed down to a single file.

YELLOW lifesaver has been assigned to pinpoint an absence of a particular file from your system resulting in no action taken with the file involved. When this type of dialog box activates, you may abort the operation or you may choose to proceed with handling other files that are present at their default locations:



RED lifesaver is reserved for error situations when the particular file has been found present on your system, yet cannot be accessed and handled. Needless to say, such situations are usually not very frequent and do not necessarily mean a problem - they may be caused e.g. by having a file loaded into a certain type of text or binary editor or by a file being temporarily locked by the system during its updating. Check for these possibilities first and repeat your operation with the problem-causing file selected again. On the other hand, an error may also be caused by e.g. disk errors or system date/time mismatch. When the error dialog box activates, you will be offered an option to run ScanDisk, you may abort the operation and manually attend to your problem or you may proceed with handling other files that are normally accessible:



This program is extensively furnished with error traps at every possible level of its operation and it will fail to proceed if it detects that "its road is not clear". This is by itself the very best way to prevent errors being written into your configuration and system files.

To test the File Not Found feature, you may simulate a problem by temporarily moving, e.g. file AUTOEXEC.BAT out of your root folder and then running backup with this file selected. (Do not forget to move it back after your test!)

To test the error behavior, you may simulate a problem by opening, e.g. file CONFIG.SYS in Microsoft Word or in a hexadecimal editor (e.g. HEdit) and then running backup with this file selected.

About Registration And Upgrades

Configuration LifeGuard is shareware. It is a fully functional, uncrippled and feature-unrestricted program. You are licensed to freely use it and evaluate it for 30 days after which period you are required to register if you want to continue using this application, or to remove it from your computer. Now the program does not disable itself after the time specified in license. A splash screen (wait screen) has been introduced on launch of the unregistered version instead - buttons closing it are disabled for 30 seconds and key combinations Alt+F4, Ctrl+Alt+Del, Alt+Tab, Ctrl+Esc and the "Windows key" are disabled until the splash screen is removed. But here comes the tricky part: if you hide the splash screen behind opened windows of other applications, minimize it or otherwise force it to lose its focus, its timer will be reset and it will activate anew from the moment the splash screen regains its focus.

Registration removes the delaying splash screen on the program's launch and fully legalizes your indefinite use of this application, based on the type of license you'll purchase. You'll also automatically qualify for life-of-product free future upgrades within your license (the upgrades will be made available for download at our Web site).

Speaking about registering, there are two ways to do this - online or by using the enclosed Register program. Registration is provided by the processing service of our Web site at Kagi, Berkeley, CA, USA. Payment can be effected by Check or Money Order, VISA, Mastercard, Eurocard, American Express, Optima, Discover, Diners Club, JCB Card, Carte Blanche, Invoice as well as by cash in specified currencies. **Your credit card number will be encrypted for enhanced security, regardless of whether you register online or send your registration by e-mail, fax or via postal mail.**

Online registration is possible when paying with credit cards. If you have access to the Internet, you may register online clicking on the following link: [Register Online](#). You will be connected to Kagi Online Order Processing - Visual Fantasy secure online registration site at Berkeley and your ordering information will be encrypted using the Secure Socket Layer (SSL) protocol before being transferred to the Web Server. This is the fastest way to register. You may register online in any of the following 10 languages: English, German, Spanish, French, Italian, Dutch, Swedish, Finnish, Danish and Japanese.

To register using the enclosed Register program, run file REGISTER.EXE and follow further instructions on screen. You can find this file in the Configuration LifeGuard folder. Alternatively, click on the following link: [Register using the enclosed Register program](#). File REGISTER.EXE is available in the unregistered version only and is removed in the registered version. Registration fees are as follows:

US\$ 10 for a single user

US\$ 100 for a site license

US\$ 300 for a world-wide license.

Site licenses cover a single organization for an area of up to 100 miles (160 km) in radius. A world-wide license covers everyone in a single organization.

On receipt of payment, the password will be sent to you within 48 hours, preferably by e-mail. It will unlock the registered version of Configuration LifeGuard. To proceed, click on Enter Password button on the splash screen, enter the password and press OK button. Registered version of Configuration LifeGuard will load.

Registration of this version entitles you to free upgrades - once you register, you won't have to register ever again! Your registration will be valid for all future releases of Configuration LifeGuard.

Customizing Options

Menu Options | Customize allows user-customization of the following features as per their respective submenus:

File Selections

When Configuration LifeGuard starts, it loads the selection of the first six files as the default. This built-in default can, however, be overridden by the users reflecting their individual preferences. This feature allows the user to adjust the startup selections to suit particular needs, checking some and unchecking the other. Such automation may come handy in a particular situation, when, e.g., testing behavior of certain files that may be changed and specifically ignoring other files, etc. If you like, you may always load all 10 files as your customized default or even load none at all, always entering your selections manually. *To customize the file selections, select the files first by enabling their check mark. Next click on Menu Options | Customize | File Selections and press Yes button. Your current selections will be saved and they will load automatically the next time you start Configuration LifeGuard.*

Disable Restore Confirmation and Disable Undo Restore Confirmation

These features disable or enable the confirmation dialog box when restoring or undoing the backup. The confirmation (warning) dialog box is a "safety fuse" in case you click on the Restore or Undo Restore buttons (or on their respective menus) by mistake and allows to gracefully withdraw from execution of these commands. *It may be disabled or enabled as desired by particular user preferences clicking on the respective submenus that toggle between disabling and enabling the confirmations.*

Remember Window Position

With this feature enabled, the program will remember its position on screen that was saved automatically during the last exit. Use this setting if the program's default position doesn't suit you or you would like to organize your screen in such a way that individual opened windows do not overlap or the program doesn't obstruct your view of other important information on screen.

Snap To Screen Edges

This setting is one more feature meeting your specific customizable demands. When enabled, the program cannot be positioned out of the screen borders - if you try to do it (dragging it by its title bar) it will always snap to screen edges, be it a corner or the visible borders of your monitor.

