

# CR-Self Extractor Creator Help

## Welcome to CR Self Extractor

If you are having problems try the [QuickStart](#) page.

Here are some common questions you might have.

### What is CR Self Extractor?

CR Self Extractor is a very powerful yet very easy to use shareware program that creates Self Extracting files. A Self Extracting file (Self Extractor) is a program that contains compressed files, this allows you to add the file(s) of your choice to a Self Extractor then you can send this program via e-mail, post it on the internet or do what you like with it. Generally speaking the files in the Self Extractor file will be between 40%-60% smaller than their de-compressed counterparts. This makes CR Self Extractor a very useful backup tool.

### Why use an Self Extractor?

Self Extractor's are very useful for distributing files for example over the internet and via e-mail. You can also use them for backup purposes and for fitting large files onto floppy disks.

### Software Installations:

If you are a developer and you use **InstallShield** are a similar setup program that doesn't allow you to create single EXE's then you will find CR Self Extractor very useful as well as it includes a *Software Installation Option*. **NOTE:** If you switch InstallShield compression **OFF** and put CR Self Extractor compression on maximum you will probably achieve a smaller EXE file.

### Why not just use a Zip?

Zip's are fine as long as you know your end-user will be able to

a) Unzip it

b) Run the files that they extracted from the zip.

But isn't so much easier for the end user to just click on a program and click start instead of messing around with PKUNZIP or WINZIP(r), I know which I would rather do.

You will find in most case's (particularly if the person is not familiar with computers) that it is *much better* to use a Self Extractor - CR Self Extractor.

### If you find any bugs or need technical support:

Go to the [About Me](#) page and e-mail me:

CR Self Extractor was written and designed by [David Cross](#)

WinZip(r) is a registered trademark of Nico Mak Computing.

## *QuickStart!*

**This will help you get going with CR Self Extractor!**

**Once you have done this use the back button and experiment with different settings, because this is only a very brief run through of what CR Self Extractor can do.**

**On the First screen click 'Next >'**

- Click on the 'Add Files' Button.
- Select a the files you want (hold down Ctrl to select multiple files).
- Click OK.
- Click Next
- Type in the message you want to be displayed when the program starts up in the 'Main Text' box
- Click Next
- Type in the directory you want the files to be copied to in the 'Extract to' box
- Click Next
- Click Save to EXE
- Type in the name of the file you want your program to be saved as and click OK
- Wait until the progress bar has reached to top
- When prompted answer whether you wish to run the created program or not.

It's as simple as that!

Now all you need to do is run the Program that you created.

## *About Me*

My name is David Cross and I am a student, I run [CR-Software](#). My interests include mountain biking, sailing and playing my guitar. I hope you like CR Self Extractor. It took me quite a long time to write it, if you have any suggestions about how I can improve CR Self Extractor please e-mail me.

Note: Before you e-mail for technical support make sure the answer is not in the help file.

Visit us on: [www.crsoft.fsnet.co.uk](http://www.crsoft.fsnet.co.uk)

e-mail on: [info@crsoft.gq.nu](mailto:info@crsoft.gq.nu)

Bug reports to:

[crsebugs@crsoft.gq.nu](mailto:crsebugs@crsoft.gq.nu)

## *About Box*

Display's information *About* the program, hence the name "About Box"

If you are having problems try the [QuickStart](#) page.

## *Welcome Window*

Welcome to CR Self Extractor - the ultimate way to distribute files over the internet. This is the Start Window. Click 'Next >' to continue.

If you are having problems try the [QuickStart](#) page.

## *Add Files Window*

This is when you add the files you wish to be included in your program. You can add just about as many files as you want to the archive. To add files click 'Add Files' select the file(s) you wish to be added then click OK (To select more than one file hold down the CTRL key).

To remove a file click on the file in the file box then click 'Remove File'. The Clear button will clear the whole file box so be careful how you use this button!

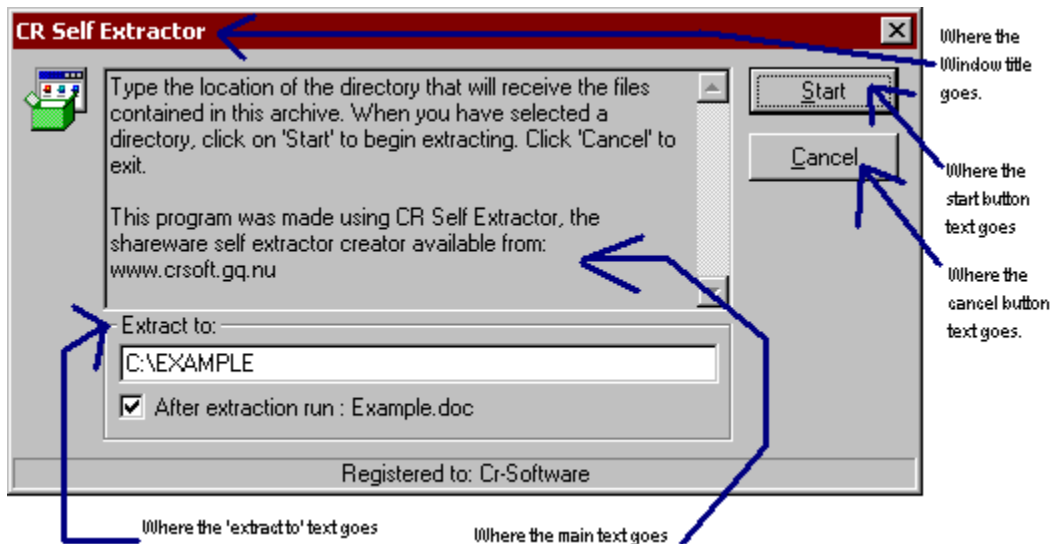
If you have saved settings from an archiving job you have done before then you can open the settings file with the 'Open Settings' button.

The Keep Directory Names check box allows the directories that the files are currently placed in to be re-created when the files are extracted, for example if the file you have added is `C:\PROJECTS\SANDWICH\MAKE.DOC` and the Self Extractor is extracted to `C:\FILES` then `MAKE.DOC` will exist in `C:\FILES\PROJECTS\SANDWICH\MAKE.DOC`

If you are having problems try the [QuickStart](#) page.

## Window Title and Main Text Options

This allows you to set the Window title and the text that is displayed on the main part of the window on your self extractor. The following picture shows you where these will go on your final self extractor



If you are having problems try the [QuickStart](#) page.

## More Options Window

### 'Extract To' Box

The 'Extract to' box allows you to specify the directory that the files in the archive will be extracted to, this should include a drive, for example C:\FILES rather than FILES. When using the Software Installation mode is it **strongly** recommended that you leave the 'Extract To' directory as blank, therefore the windows temporary directory is used.

### Doc/File to run

The Doc/File to run allows you to specify a document/program file or even a website to open when the extraction is complete, obviously if you were specifying an Excel Spreadsheet for example and you knew that the person you were sending the Self Extractor to did not or might not have Excel then this function would not work.

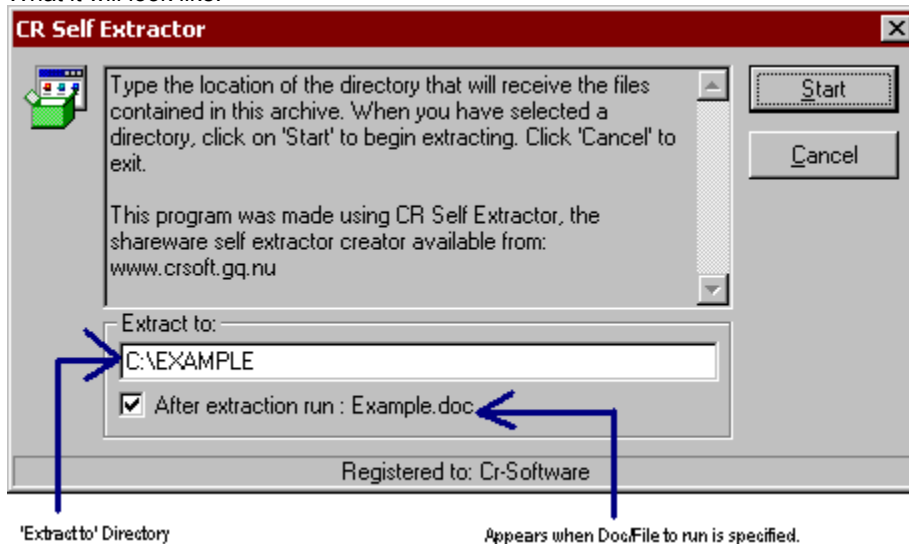
### Software Installation mode

The software installation mode shows a different windows when it extracts the files. It is intended for software installers that do not allow single .EXEs and allows the files to be extracted to a temporary directory that is later deleted, when the program has finished. The file/doc therefore in this mode **must** be an executable file (.exe).

### Compression Level

The compression level slider allows you to change the level of compression that the self extractor uses. The higher the compression the slower the compression, the lower the compression, the faster the compression.

What it will look like:



If you are having problems try the [QuickStart](#) page.



## Summary

This gives you a summary of the settings you have used in the previous screens if you are happy with these then you can click Save To EXE to build you program. If you are not then click '< Back' and adjust the incorrect settings.

You can also set a password on the EXE you make so you can protect your files from people who shouldn't view them. For obvious security reasons the password is not saved into the settings file.

The 'Choose Icon' button allows you to select a different icon to the default icon that is used with CR-Self Extractor, this is particularly useful when you are making a self extractor for a setup program because you can use a setup icon. If you go into the folder icons in the CR-Self Extractor directory then you can choose from a wide range of icons supplied with the program.

If you are having problems try the [QuickStart](#) page.

## *How to Register*

**Thank you for considering registering CR Self Extractor!**

**Order Form**

Unfortunately, as I am a student and have very little money I am unable to offer on-line registration. I cannot take credit card numbers over the phone either, as this service costs around £15 a month (I think), sorry!

To register therefore you have to send a cheque (much safer than on-line or phone ordering) made payable to David Cross for the appropriate amount to :

David Cross  
16 Daleside  
Thornhill  
Dewsbury  
West Yorkshire  
England  
WF12 OPJ

The cost of registering is very cheap and the cost is as follows:

CR Self Extractor single copy :      £10 each\*

You will get a registration code and a disk with the latest version of CR Self Extractor on. You will be entitled to **unlimited** upgrades!

If you want a large site license or some other special arrangement please write to me or phone me on:

+44 01924 504467 (after 4:30 weekdays)

Or you can e-mail me on:

[info@crsoft.gq.nu](mailto:info@crsoft.gq.nu)

[Click here for an order form](#)

\* I reserve to right to change the cost at any time without notice, P&P is £2.50 per disk.

## Order Form

When I receive this I will send you a registration code via e-mail, then I will post you a disk containing the latest version of CR Self Extractor, with a printed sheet with your registration details on. If you do not have e-mail, then the registration details will come through the post.

Disks are posted via recorded delivery.

[click here to print](#)

I would like: \_\_\_\_\_ copies of CR Self Extractor,  
at: £10 = \_\_\_\_\_

Postage and Packing,  
at: £2.50 per disk = \_\_\_\_\_

Total payment: \_\_\_\_\_

Registration Name: \_\_\_\_\_  
(No more than 50 letters including spaces, but no less than 4 letters, including spaces)

Date: \_\_\_\_\_  
Name: \_\_\_\_\_  
Company: \_\_\_\_\_

Address: \_\_\_\_\_  
\_\_\_\_\_  
\_\_\_\_\_  
\_\_\_\_\_  
\_\_\_\_\_

Post Code: \_\_\_\_\_  
Country: \_\_\_\_\_

Day Phone: \_\_\_\_\_  
E-Mail address: \_\_\_\_\_

How did you hear about CR Self Extractor?  
\_\_\_\_\_  
\_\_\_\_\_

Comments:

## *CR Self Extractor, Copyright © David Cross 1999-2000*

### **License Agreement**

You should carefully read the following terms and conditions before using this software. Unless you have a different license agreement signed by THE AUTHOR("David C. Cross"), your use of this software indicates your acceptance of this license agreement and warranty.

- Each copy of CR Self Extractor may be used at a single workstation to create an unlimited number of freely distributable royalty-free self-extracting programs, subject to the following conditions:
- Self-extracting programs created by CR Self Extractor contain, among other things, a portion of CR Self Extractor, including copyrighted software, proprietary notices, and identifying information (the "Extraction Software"). No user, nor anyone else, may alter or modify the Extraction Software. You cannot give anyone else permission to modify the Extraction Software.

All rights not expressly granted in this license agreement are reserved entirely to THE AUTHOR.

### **Disclaimer of Warranty**

THIS SOFTWARE AND THE ACCOMPANYING FILES ARE SOLD "AS IS" AND WITHOUT WARRANTIES AS TO PERFORMANCE OR MERCHANTABILITY OR ANY OTHER WARRANTIES WHETHER EXPRESSED OR IMPLIED. Because of the various hardware and software environments into which CR Self Extractor may be put, NO WARRANTY OF FITNESS FOR A PARTICULAR PURPOSE IS OFFERED. Good data processing procedure dictates that any program be thoroughly tested with non-critical data before relying on it. The user must assume the entire risk of using the program. ANY LIABILITY OF THE SELLER WILL BE LIMITED EXCLUSIVELY TO PRODUCT REPLACEMENT OR REFUND OF PURCHASE PRICE.

### **Distribution of CR Self Extractor**

You are hereby licensed to make as many copies of the of this software and documentation as you wish; give exact copies of the original version to anyone; and distribute the version of the software and documentation in its unmodified form via electronic means. There is no charge for any of the above.

You are specifically prohibited from charging, or requesting donations, for any such copies, however made; and from distributing the software and/or documentation with other products (commercial or otherwise) without prior written permission from THE AUTHOR.

## FAQ's

Here are some questions, that might be asked a lot (I don't know if they will be because this is only the first release of CR Self Extractor).

**When I save the settings the password isn't saved.**

This is obviously done for security reasons. Because if it is saved in the settings file then there is a chance that someone might be able to look at the password in the settings file and if you are like me and use the same password for everything, then this could be a real security risk!

**When I make my self extractor with xxxx files it gets bigger, not smaller.**

- I should remind you this happens on only **very** rare occasions, but if you have compressed files that are already compressed (like compressing CR Self Extractor programs or ZIP files) then CR Self Extractor cannot compress them any more therefore when the program part of Self Extractor is added it the file increases in size (only by about 35Kb though).



CR-Software is a little company run by me, David Cross. Sponsorship or Donations are very welcome as I am a student and developing programs does cost money, as do the phone bills for putting those programs on the internet.

*DCross*

David C. Cross, M.D

## *Should I implement Disk Spanning?*

After asking around it seemed that adding a disk spanning option (Allows a Self Extractor to be split over multiple floppys) would be pointless for these reasons:

- Most people don't use floppy drives if they need to send someone a file they either e-mail it or put it on a website and tell the person the URL.
- People who do use portable storage now seem to have one of these "*Super Floppys*" (LS120's / Zip Drives) and/or a CD Recorder/Re-writer.
- It would increase the size of the extractor program considerably.

If you think I am wrong and should implement Disk Spanning then please e-mail me on this address:

[spanningplease@crsoft.gq.nu](mailto:spanningplease@crsoft.gq.nu)

Stating your reason why I should implement Disk Spanning, If I get enough e-mails then I will.

**NOTE: You should not use this e-mail address for technical support.**

## *Acknowledgments*

Quite a few people helped me write CR-Self Extractor, Without these people CR-Self Extractor would never have been made available or wouldn't have been nearly as good.

Stephen Cross, who started me off on proper computer programming in the first place. He also helped test CR-Self Extractor and give me lots of ideas as how to improve it.

Jean-loup Gailly and Mark Adler for writing the great compression code that CR-Self Extractor incorporates.

The Freeserve ISP. If it hadn't been for Freeserve I would have never been on-line or had a decent website. My programming would have suffered as a result.

Last but not least, my parents, for putting up with me and suggesting ways that I might make money.





